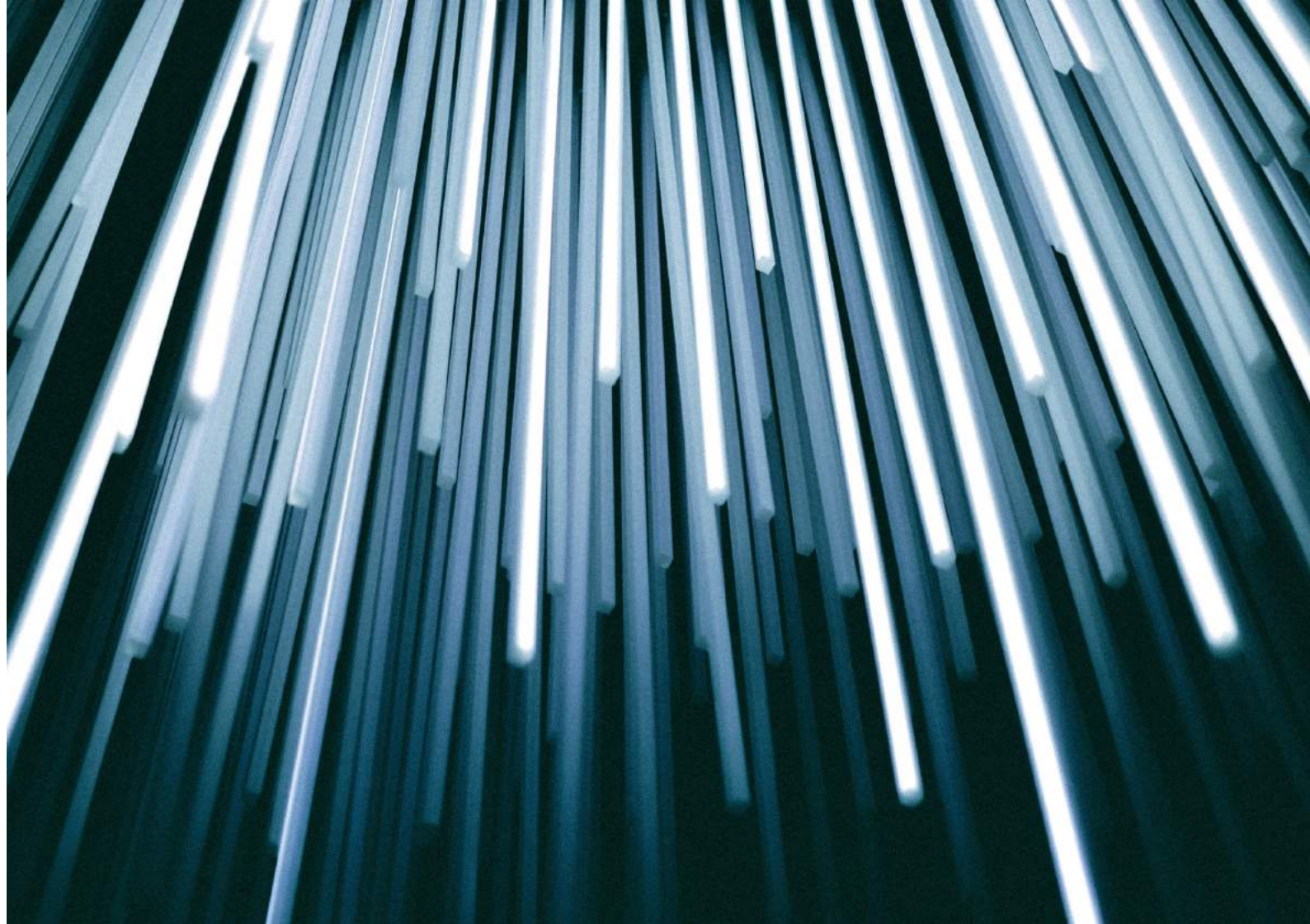




LinearLyte
The Collection
2022



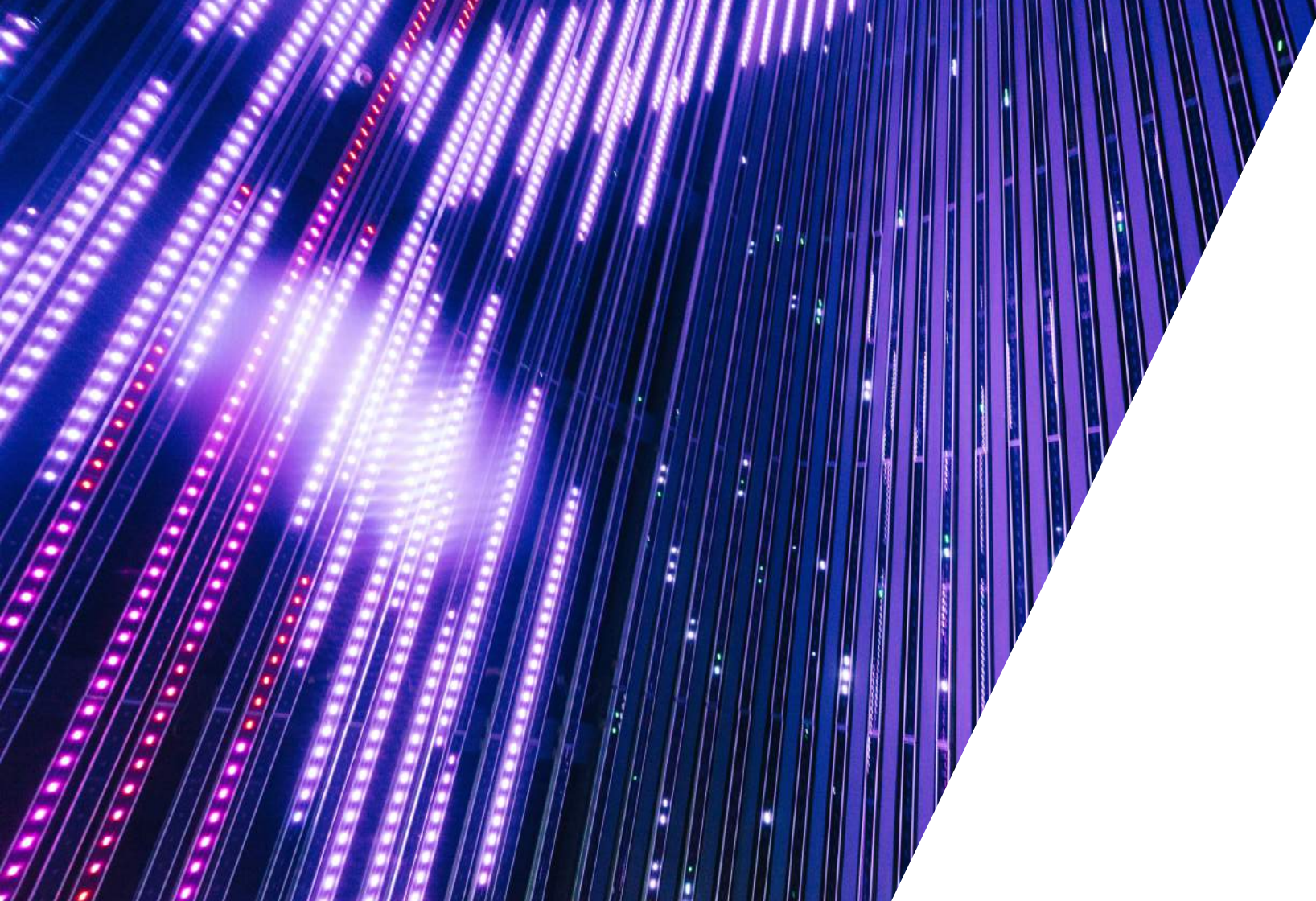


The future is bright

The image shows two parallel strips of LED lighting against a white background. Each strip consists of a grey plastic housing with a row of small, square LED chips on top. A clear plastic connector is attached to the end of each strip, with a thin, clear cable extending from it. The strips are positioned diagonally, one above the other. The word "LED" is printed in a bold, teal, sans-serif font in the center of the image, overlapping the strips.

LED





PROLYNE
by LinearLyte



The ProLyne range offers a stunning selection of high-power linear LED Grazers for internal and external lighting applications.

The exterior range is manufactured using the latest Silicone-Infusion Technology shielding the internal LED components from condensation and corrosion, extending product life and delivering maximum unobstructed light.

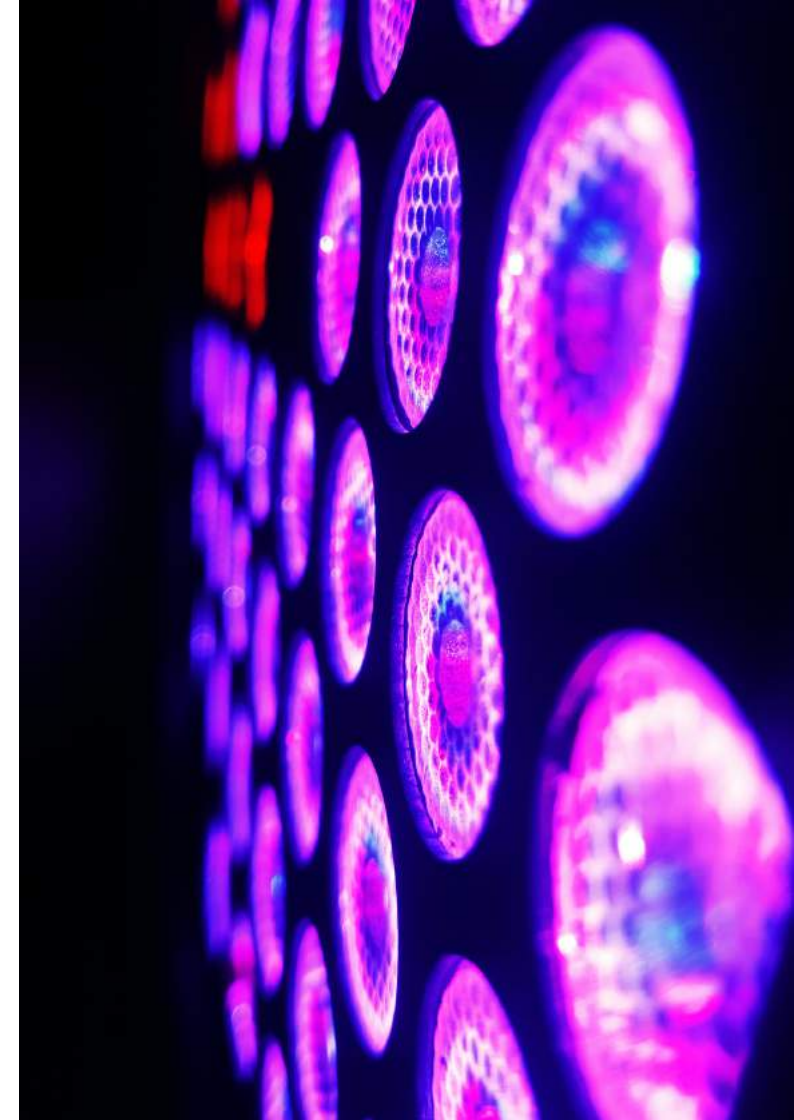
Dynamically engineered to address environmental factors and enhance performance in harsh climatic conditions the exterior range is as innovative as it is durable.

ProLyne internal components consist of premium quality Nichia LED chips and 3a copper circuitry.

Full colour temperature options 2400K – 6500K in RGB, RGBW, RGBA and Variable White are available across the product line.

Angled lenses, Beam variation, glare resistant with two mounting options delivers sleek high- performance fixtures that inter-link and can be DMX controlled.

All ProLyne products are housed in anodized aluminium profiles. They are available in 3 standard colour renderings with the option of colour customization and powder coating.



Niche Monochrome	02
Mighty Monochrome	03
Dual Monochrome	04
Quadra Recessed Monochrome	05
Quadra Monochrome	06
Quantum Monochrome	07
Quantum RGBW	08
Sidewinder Monochrome	09
Venom Monochrome	10
Magnum Pro Monochrome	11
Magnum Pro RGBW	12

- Full colour temperature options available
- Angled lenses for diversification
- All products use anodized aluminum profiles
- Designed to be favourable in harsher environments
- Nichia LED chips
- Introducing our new Sidewinder module



NICHE MONOCHROME

MAIN FEATURES

- 24VDC, 20 W/m
- Indoor Rated IP44
- Operating Temp. -15°C to 40°C
- Beam angle options of 15°, 30°, 30° x 35°
- Profile Size: 21mm H x 26mm W
- Available Lengths of 300mm, 600mm & 1200m
- Product finish in Black, White
- Silk Screened Tempered Glass/Acrylic Cover
- Optical accessories Glare shield, Asymmetric/Symmertic Louvers
- 75-95lm/W

TYPICAL APPLICATION

Indoor coves, wall washing, window lighting and general grazing

CONFIGURATIONS

Finish	Length	Colour	Beam	Mounting	Dimming Type	Accessories
Charcoal Grey	300mm	2700K	15°	Small Tiltstand	SWD - on/off	Glare Shield
Black	600mm	3000K	30°	Snap-in Clips	DALI	Symmetric Louver
White	1200mm	4000K	20° x 35°		0-10	Asymmetric Louver
		5000K			DMX	None
		6500K				

ACCESSORIES

FOR INSTALLATION





MIGHTY MONOCHROME

MAIN FEATURES

- 24VDC, 18 W/m
- Indoor Rated IP66
- Operating Temp. -15°C to 50°C
- Beam angle options of 12°, 30°, 40° 60° 20° x 40°
- Profile Size: 30mm H x 20mm W
- Available Lengths of 500mm & 1000mm
- Product finish in Charcoal Grey, Black, White
- Silk Screened Tempered Glass
- Optical accessories Glare shield, Asymmetric/Symmetric Louvers
- 75-95lm/W

TYPICAL APPLICATION

High wall washing up to 5m and general grazing applications

CONFIGURATIONS

Finish	Length	Colour	Beam	Mounting	Dimming Type	Accessories
Charcoal Grey	500mm	2700K	12°	Large Tiltstand	SWD - on/off	None
Black	1000mm	3000K	30°	Snap-in Clips	TRIAC	
White		4000K	60°		DALI	
			20° x 40°		0-10	
					DMX	

ACCESSORIES

FOR
INSTALLATION





DUAL MONOCHROME

MAIN FEATURES

- 24VDC, 24 W/m
- Outdoor Rated IP66
- Operating Temp. -15°C to 50°C
- Beam angle options of 20°, 30°, 20° X 40°
- Profile Size of 27.5mm H x 33mm W
- Available Lengths of 500mm & 1000mm
- Product finish in Anodized Silver, Black, White
- Silk Screened Tempered Glass
- Optical accessories Asymmetric/Symmetric Louvers
- 80-95lm/W

TYPICAL APPLICATION

General building facade, wall washing, wall grazing, commercial, retail, entertainment, public spaces

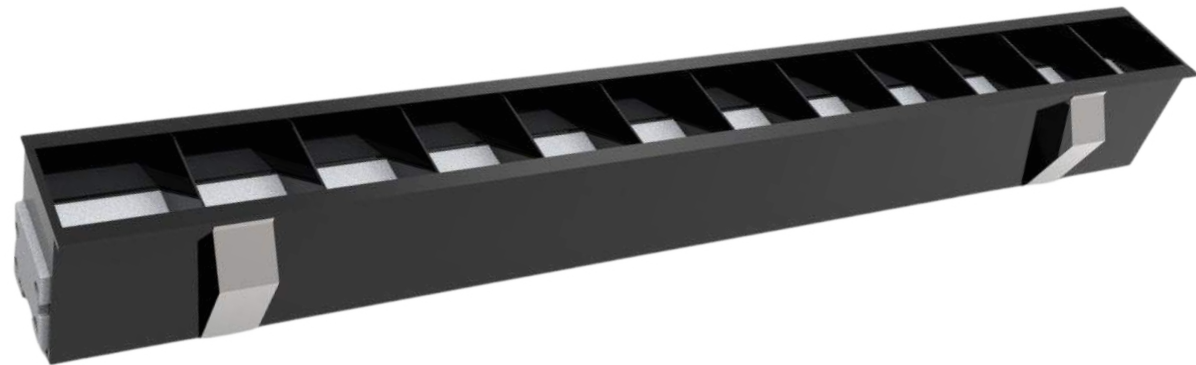
CONFIGURATIONS

Finish	Length	Colour	Beam	Mounting	Dimming Type	Accessories
Anodised Silver	500mm	2700K	20°	Small Tiltstand	SWD - on/off	Symmetric Louver
Black	1000mm	3000K	30°	Snap-in Clips	DALI	Asymmetric Louver
White		4000K	20° x 40°		0-10	None
		5500K			DMX	
		6500K				

ACCESSORIES

FOR
INSTALLATION





QUADRA RECESSED MONOCHROME

MAIN FEATURES

- 24VDC, 24 W/m
- Indoor Rated IP44
- Operating Temp. -15°C to 40°C
- Beam angle options of 15°, 20°, 35°, 50°, 10° X 40°
- Profile Size: 33.8mm H x 36mm W
- Available Lengths of 260mm, 500mm & 1000m
- Product finish in Anodized Silver, Black, White
- Silk Screened Tempered Glass
- Optical accessories Symmetric Louvers
- 85-105lm/W

TYPICAL APPLICATION

Indoor linear downlight, wall washing, museums, commercial retail

CONFIGURATIONS

Finish	Length	Colour	Beam	Mounting	Dimming Type	Accessories
Anodised Silver	260mm	2700K	15°	Snap-in Clips	SWD - on/off	Symmetric Louver
Black	500mm	3000K	20°		DALI	
White	1000mm	4000K	35°		0-10	
		5000K	50°		DMX	
		6500K	10° x 40°			

ACCESSORIES

FOR
INSTALLATION





QUADRA MONOCHROME

MAIN FEATURES

- 24VDC, 24 W/m
- Outdoor Rated IP66
- Operating Temp. -15°C to 50°C
- Beam angle options of 15°, 20°, 35°, 50°, 10° X 40°
- Profile Size of 33.8mm H x 36mm W
- Available Lengths of 260mm & 500mm & 1000mm
- Product finish in Anodized Silver, Black, White
- Silk Screened Tempered Glass
- Optical accessories Asymmetric/Symmetric Louvers
- 85-105lm/W

TYPICAL APPLICATION

General building facade, wall washing, wall grazing, commercial, retail, entertainment, public spaces

CONFIGURATIONS

Finish	Length	Colour	Beam	Mounting	Dimming Type	Accessories
Anodised Silver	260mm	2700K	15°	Small Tiltstand	SWD - on/off	Symmetric Louver
Black	500mm	3000K	20°	Large Tiltstand	DALI	Asymmetric Louver
White	1000mm	4000K	35°	Snap-in Clips	0-10	None
		5000K	50°		DMX	
		6500K	10° x 40°			

ACCESSORIES

FOR
INSTALLATION





QUANTUM MONOCHROME

MAIN FEATURES

- 24VDC, 30 W/m (Customisable up to 50W/m)
- Outdoor Rated IP66
- Operating Temp. -15°C to 50°C
- Beam angle options of 15°, 20°, 35°, 50°, 10° X 40°
- Profile Size: 34.4mm H x 50mm W
- Available Lengths of 313mm, 500mm, 600mm, 1000mm & 1200m
- Product finish in Anodized Silver, Black, White
- Silk Screened Tempered Glass
- Optical accessories Glare Shield, Asymmetric/Symmetric Louvers
- 85-105lm/W

TYPICAL APPLICATION

General building facade, wall washing, wall grazing, commercial, retail, entertainment, public spaces

CONFIGURATIONS

Finish	Length	Colour	Beam	Mounting	Dimming Type	Accessories
Anodised Silver	313mm	2700K	15°	Small Tiltstand	SWD - on/off	Glare Shield
Black	500mm	3000K	20°	Large Tiltstand	DALI	Symmetric Louver
White	605mm	4000K	35°	Snap-in Clips	0-10	Asymmetric Louver
	1000mm	5000K	50°		DMX	None
	1200mm	6500K	10° x 40°			

ACCESSORIES

FOR
INSTALLATION





QUANTUM RGBW

MAIN FEATURES

- 24VDC, 48 W/m
- Outdoor Rated IP66
- Operating Temp. -15°C to 50°C
- Beam angle options of 15°, 20°, 35°
- Profile Size of 34.4mm H x 50mm W
- Available Lengths of 313mm & 500mm, 600mm, 1000mm & 1200mm
- Product finish in Anodized Silver, Black, White
- Silk Screened Tempered Glass
- Optical accessories Glare Shield, Asymmetric/Symmetric Louvers
- 45lm/W

TYPICAL APPLICATION

General building facade, wall washing, wall grazing, commercial, retail, entertainment, public spaces

CONFIGURATIONS

Finish	Length	Colour	Beam	Mounting	Dimming Type	Accessories
Anodised Silver	313mm	RGB + 3000K	15°	Small Tiltstand	SWD - on/off	Glare Shield
Black	500mm	RGB + 6500K	25°	Large Tiltstand	DALI	Symmetric Louver
White	605mm		35°	Snap-in Clips	0-10	Asymmetric Louver
	1000mm				DMX	None
	1200mm					

ACCESSORIES

FOR
INSTALLATION



SIDEWINDER

MAIN FEATURES

- 24VDC, 54W/m
- Outdoor Rated IP65
- Operating Temp. -10°C to 50°C
- Beam angle options of 15°, 25°, 40°, 60°
- Profile Size: 50mm H x 51mm W
- Length of 1 Module - Varies
- Product finish in Anodized Silver Grey, Black
- Silk Screened Tempered Glass
- 80lm/W

TYPICAL APPLICATION

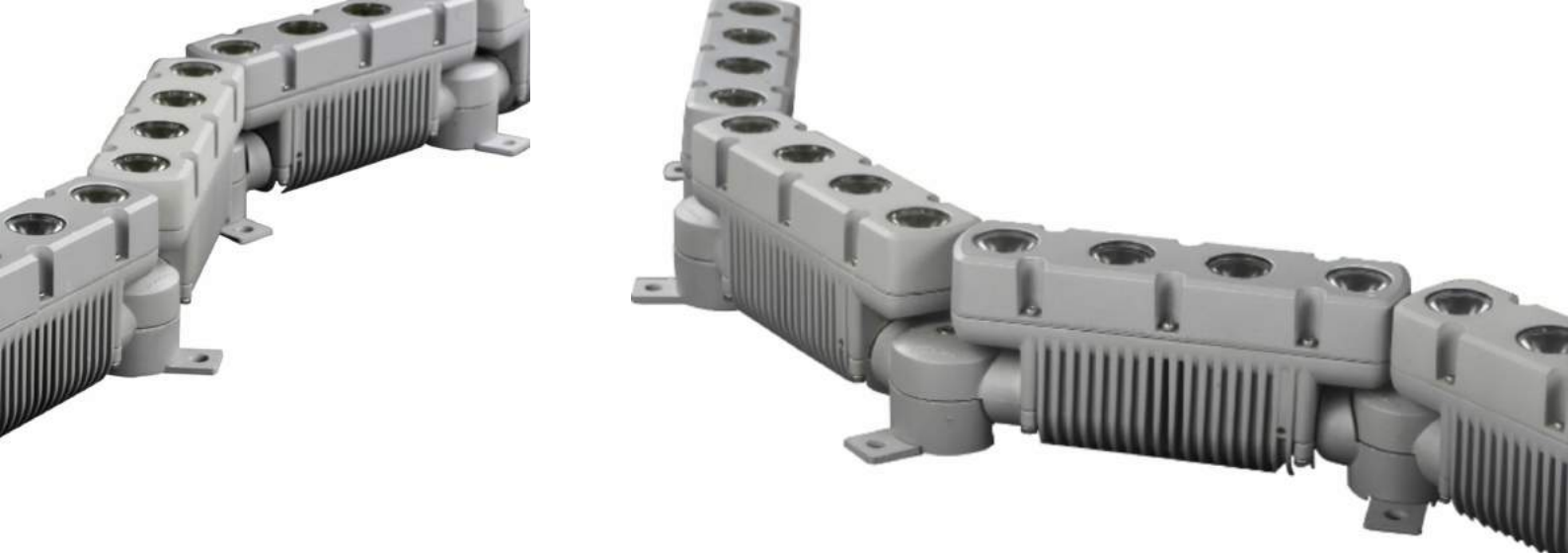
General grazing, wall washing around curved areas, pillars, commercial, public spaces

CONFIGURATIONS

Finish	Length	Colour	Beam	Mounting	Dimming Type	Accessories
Silver/Grey	445mm	2700K	15°	None	SWD - on/off	None
Black	895mm	3000K	25°		DALI	
		4000K	40°		0-10	
		5700K	60°		DMX	

ACCESSORIES

FOR
INSTALLATION



VENOM MONOCHROME

MAIN FEATURES

- 24VDC, 45W/m
- Outdoor Rated IP65
- Operating Temp. -15°C to 50°C
- Beam angle options of 15°, 38°
- Profile Size: 92.5mm H x 90mm W
- Length of 1 Module 179mm, 5 Modules 994mm
- Product finish in Anodized Silver Grey, Black
- Silk Screened Tempered Glass
- 90lm/W

TYPICAL APPLICATION

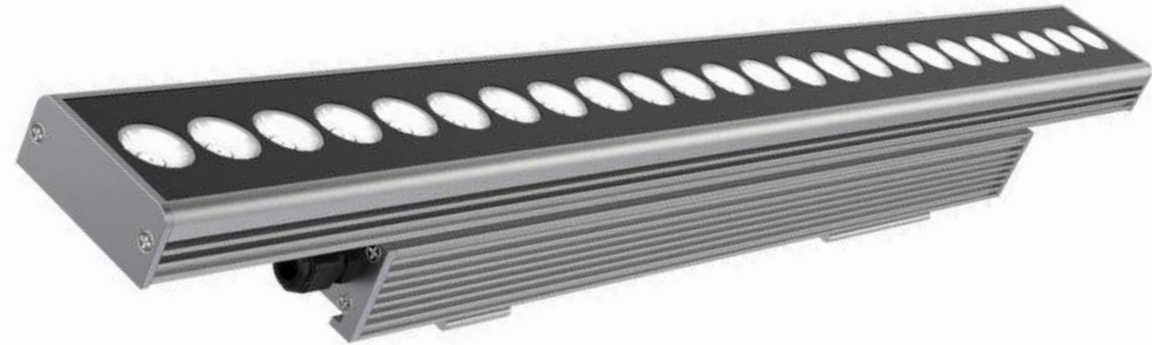
General grazing, wall washing around curved areas, pillars, commercial, public spaces

CONFIGURATIONS

Finish	Length	Colour	Beam	Mounting	Dimming Type	Accessories
Silver/Grey	194mm	3000K	15°	None	SWD - on/off	None
Black	395mm	4000K	25°		DALI	
	595mm		35°		0-10	
	795mm				DMX	
	995mm					

ACCESSORIES

FOR
INSTALLATION



MAGNUM PRO MONOCHROME

MAIN FEATURES

- 220VAC Direct AC, 40W/m
- Outdoor Rated IP66
- Operating Temp. -15°C to 50°C
- Beam angle options of 15°, 20°, 35°, 50°, 10° X 40°
- Profile Size of 60mm H x 60mm W
- Available Lengths of 304mm, 598mm, 600mm, 1183mm
- Product finish in Charcoal Grey, Black, White
- Silk Screened Tempered Glass
- Optical accessories Glare Shield, Asymmetric/Symmetric Louvers
- 90-100lm/W

TYPICAL APPLICATION

General building facade, wall washing, wall grazing, commercial, retail, entertainment, public spaces

CONFIGURATIONS

Finish	Length	Colour	Beam	Mounting	Dimming Type	Accessories
Charcoal Grey	304mm	2700K	15°	Large Tiltstand	SWD - on/off	Glare Shield
Black	598mm	3000K	20°	Snap-in Clips	DALI	Symmetric Louver
White	1183mm	4000K	35°		0-10	Asymmetric Louver
		5000K	50°		DMX	None
		6500K	10° x 40°			

ACCESSORIES

FOR INSTALLATION





MAGNUM PRO RGBW

MAIN FEATURES

- 220VAC Direct AC, 40W/m
- Outdoor Rated IP66
- Operating Temp. -15°C to 50°C
- Beam angle options of 15°, 20°, 35°, 50°, 10° X 40°
- Profile Size of 60mm H x 60mm W
- Available Lengths of 304mm, 598mm, 600mm, 1183mm
- Product finish in Charcoal Grey, Black, White
- Silk Screened Tempered Glass
- Optical accessories Glare Shield, Asymmetric/Symmetric Louvers
- 50lm/W

TYPICAL APPLICATION

General building facade, wall washing, wall grazing, commercial, retail, entertainment, public spaces

CONFIGURATIONS

Finish	Length	Colour	Beam	Mounting	Dimming Type	Accessories
Charcoal Grey	304mm	RGBW	15°	Large Tiltstand	SWD - on/off	Glare Shield
Black	598mm		20°	Snap-in Clips	DALI	Symmetric Louver
White	1183mm		35°		0-10	Asymmetric Louver
			50°		DMX	None
			10° x 40°			

ACCESSORIES

FOR
INSTALLATION





FLEXYLYNE
by LinearLyte



The FlexLyne range of flexible linear LED strip is utilized for internal and external lighting applications.

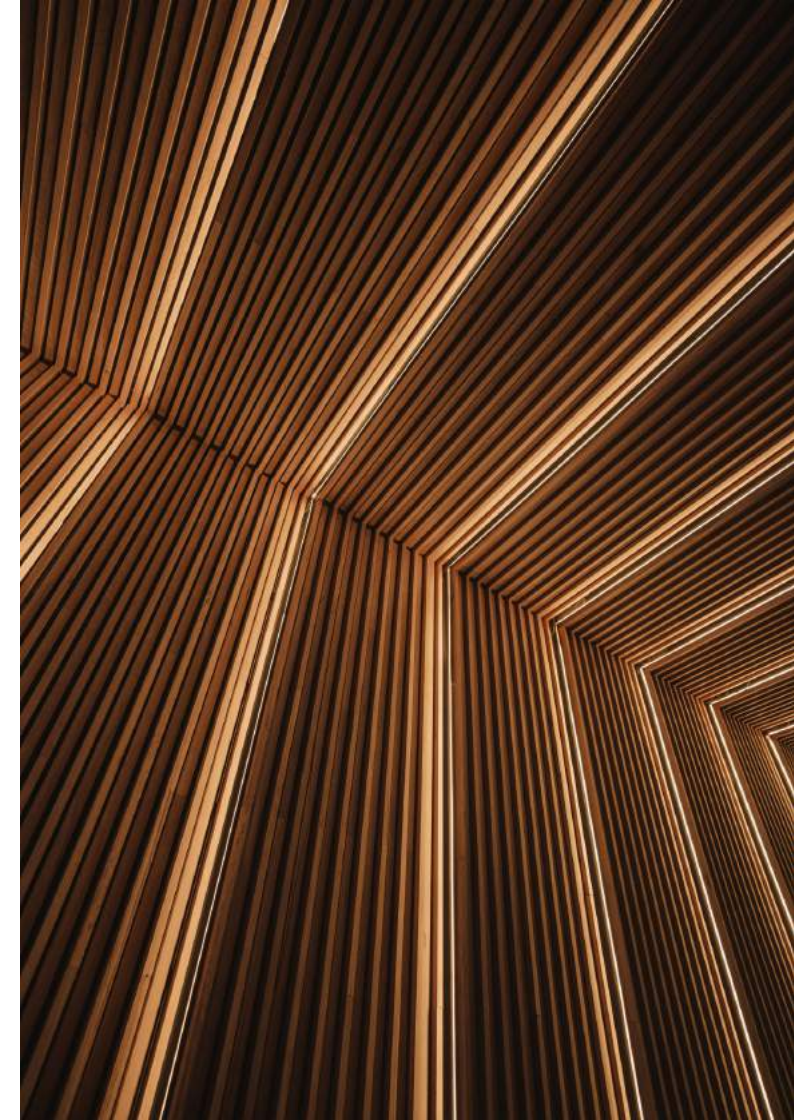
Lines of uniform light are an ideal medium for accent lighting and indirect lighting. Predominantly used for cove lighting, cabinet lighting, stair lighting etc. it is as versatile as it is creative.

It comes in a range of specifications – Colour temperature options (2200K – 6000K) in White, RGB, RGBW, RGBA and Variable White (Tunable) are available.

The FlexLyne range also offers a full spectrum of lumen output and wattage per metre options. DMX and Pixel (digital) compatible.

FlexLyne is available on spools or can be pre-cut to custom lengths at our manufacturing facility. Pre-cut lengths assure IP67-68 standards.

The FlexLyne range can be surface mounted, recessed and semi-recessed dependent on required application.



Flexlyne Monochrome 70	13
Flexlyne Monochrome 140	14
Flexlyne Monochrome 280	15
Flexlyne Variable White	16
Flexlyne RGB	17
Flexlyne RGBW	18

- Full colour temperature options available
- MacAdam Ellipses SDCM 2-Step BIN
- Customisable lengths available
- Increased longevity of LED chip
- Integral heat sink, no additional thermal management required
- 50,000hrs lifetime
- Dimming via 0-10V/DMX/DALI interface modules or other PWM systems
- Photometric data in accordance with LM79 standard available on request





FLEXLYNE MONOCHROME 70

MAIN FEATURES

- 70leds/M
- FL1.5 (4.8W/m) & FL2.2 (7.2W/m)
- CRI90+
- PCB Width 8.0mm
- Cuttable Segment Length of 100mm
- Pitch Length 14.3mm
- Available in IP20, 65, 67 & 68
- Maximum Run-Length of 15m (IP20/65) and 10m (IP67/68)
- 115lm/W (IP20) - 100lm/W (IP68)

TYPICAL APPLICATION

Commercial, entertainment, healthcare, public spaces, hospitality, residential applications

CONFIGURATIONS

	Wattage/M	Voltage	Colour	Cutting Unit	IP Rating
FL1.5 - 24	4.8W	DC24V	2400K	100mm	20/65/67/68
FL1.5 - 27	4.8W	DC24V	2700K	100mm	20/65/67/68
FL1.5 - 30	4.8W	DC24V	3000K	100mm	20/65/67/68
FL1.5 - 35	4.8W	DC24V	3500K	100mm	20/65/67/68
FL1.5 - 40	4.8W	DC24V	4000K	100mm	20/65/67/68
FL1.5 - 60	4.8W	DC24V	6000K	100mm	20/65/67/68
FL2.2 - 24	7.2W	DC24V	2400K	100mm	20/65/67/68
FL2.2 - 27	7.2W	DC24V	2700K	100mm	20/65/67/68
FL2.2 - 30	7.2W	DC24V	3000K	100mm	20/65/67/68
FL2.2 - 35	7.2W	DC24V	3500K	100mm	20/65/67/68
FL2.2 - 40	7.2W	DC24V	4000K	100mm	20/65/67/68
FL2.2 - 60	7.2W	DC24V	6000K	100mm	20/65/67/68

ACCESSORIES

FOR INSTALLATION



ACC-01-8



ACC-02-8



ACC-03-8



ACC-04-8



FLEXYNE MONOCHROME 140

MAIN FEATURES

- 140leds/M
- FL3.0 (9.8W/m) & FL5.0 (16.4W/m)
- CRI90+
- PCB Width 10.0mm
- Cuttable Segment Length of 50mm
- Pitch Length 7.0mm
- Available in IP20, 65, 67 & 68
- Maximum Run-Length of 15m (IP20/65) and 10m (IP67/68)
- 115lm/W (IP20) - 105lm/W (IP68)

TYPICAL APPLICATION

Commercial, entertainment, healthcare, public spaces, hospitality, residential applications

CONFIGURATIONS

	Wattage/M	Voltage	Colour	Cutting Unit	IP Rating
FL3.0 - 24	9.8W	DC24V	2400K	50mm	20/65/67/68
FL3.0 - 27	9.8W	DC24V	2700K	50mm	20/65/67/68
FL3.0 - 30	9.8W	DC24V	3000K	50mm	20/65/67/68
FL3.0 - 35	9.8W	DC24V	3500K	50mm	20/65/67/68
FL3.0 - 40	9.8W	DC24V	4000K	50mm	20/65/67/68
FL3.0 - 60	9.8W	DC24V	6000K	50mm	20/65/67/68
FL4.4 - 24	14.4W	DC24V	2400K	50mm	20/65/67/68
FL4.4 - 27	14.4W	DC24V	2700K	50mm	20/65/67/68
FL4.4 - 30	14.4W	DC24V	3000K	50mm	20/65/67/68
FL4.4 - 35	14.4W	DC24V	3500K	50mm	20/65/67/68
FL4.4 - 40	14.4W	DC24V	4000K	50mm	20/65/67/68
FL4.4 - 60	14.4W	DC24V	6000K	50mm	20/65/67/68
FL5.0 - 24	16.4W	DC24V	2400K	50mm	20/65/67/68
FL5.0 - 27	16.4W	DC24V	2700K	50mm	20/65/67/68
FL5.0 - 30	16.4W	DC24V	3000K	50mm	20/65/67/68
FL5.0 - 35	16.4W	DC24V	3500K	50mm	20/65/67/68
FL5.0 - 40	16.4W	DC24V	4000K	50mm	20/65/67/68
FL5.0 - 60	16.4W	DC24V	6000K	50mm	20/65/67/68

ACCESSORIES

FOR INSTALLATION



ACC-01-10



ACC-02-10



ACC-03-10



ACC-04-10



FLEXYNE MONOCHROME 280

MAIN FEATURES

- 280leds/M
- FL6.0 (19.8W/m)
- CRI90+
- PCB Width 15.0mm
- Cuttable Segment Length of 50mm
- Pitch Length 7.0mm
- Available in IP20, 65, 67 & 68
- Maximum Run-Length of 15m (IP20/65) and 10m (IP67/68)
- 115lm/W (IP20) - 105lm/W (IP68)

TYPICAL APPLICATION

Commercial, entertainment, healthcare, public spaces, hospitality, residential applications

CONFIGURATIONS

	Wattage/M	Voltage	Colour	Cutting Unit	IP Rating
FL6.0 - 24	19.8W	DC24V	2400K	50mm	20/65/67/68
FL6.0 - 27	19.8W	DC24V	2700K	50mm	20/65/67/68
FL6.0 - 30	19.8W	DC24V	3000K	50mm	20/65/67/68
FL6.0 - 35	19.8W	DC24V	3500K	50mm	20/65/67/68
FL6.0 - 40	19.8W	DC24V	4000K	50mm	20/65/67/68
FL6.0 - 60	19.8W	DC24V	6000K	50mm	20/65/67/68

ACCESSORIES

FOR INSTALLATION



ACC-01-15



ACC-02-15



ACC-03-15



ACC-04-15



FLEXLYNE VARIABLE WHITE

MAIN FEATURES

- FL3.0 (9.8W/m) & FL4.5 (4.8W/m)
- CRI90+
- PCB Width 10.0mm
- Cuttable Segment Length of 100mm
- Pitch Length 16.7mm
- Available in IP20, 65, 67 & 68
- Maximum Run-Length of 15m (IP20/65) and 10m (IP67/68)
- 97lm/W (IP20) - 88lm/W (IP68)

TYPICAL APPLICATION

Commercial, entertainment, healthcare, public spaces, hospitality, residential applications

CONFIGURATIONS

	Wattage/M	Voltage	Colour	Cutting Unit	IP Rating
FL3.0VW - 2460	9.8W	DC24V	2400K - 6000K	100mm	20/65/67/68
FL3.0VW - 2760	9.8W	DC24V	2700K - 6000K	100mm	20/65/67/68
FL3.0VW - 3060	9.8W	DC24V	3000K - 6000K	100mm	20/65/67/68
FL3.0VW - 3560	9.8W	DC24V	3500K - 6000K	100mm	20/65/67/68
FL3.0VW - 4060	9.8W	DC24V	4000K - 6000K	100mm	20/65/67/68
FL4.4VW - 2460	14.4W	DC24V	2400K - 6000K	100mm	20/65/67/68
FL4.4VW - 2760	14.4W	DC24V	2700K - 6000K	100mm	20/65/67/68
FL4.4VW - 3060	14.4W	DC24V	3000K - 6000K	100mm	20/65/67/68
FL4.4VW - 3560	14.4W	DC24V	3500K - 6000K	100mm	20/65/67/68
FL4.4VW - 4060	14.4W	DC24V	4000K - 6000K	100mm	20/65/67/68

ACCESSORIES

FOR INSTALLATION



ACC-01-10



ACC-02-10



ACC-03-10



ACC-04-10



FLEXLYNE RGB

MAIN FEATURES

- FL4.4 (14.4W/m)
- CRI90+
- PCB Width 10.0mm
- Cuttable Segment Length of 100mm
- Pitch Length 16.7mm
- Available in IP20, 65, 67 & 68
- Maximum Run-Length of 15m (IP20/65) and 10m (IP67/68)
- 45lm/W (IP20) - 36lm/W (IP68)

TYPICAL APPLICATION

Commercial, entertainment, healthcare, public spaces, hospitality, residential applications

CONFIGURATIONS

	Wattage/M	Voltage	Colour	Cutting Unit	IP Rating
FL4.4RGB	14.4W	DC24V	RGB	100mm	20/65/67/68

ACCESSORIES

FOR INSTALLATION



ACC-01-10



ACC-02-10



ACC-03-10



ACC-04-10



FLEXLYNE RGBW

MAIN FEATURES

- FL5.5 (14.4W/m)
- CRI90+
- PCB Width 12.0mm
- Cuttable Segment Length of 100mm
- Pitch Length 16.7mm
- Available in IP20, 65, 67 & 68
- Maximum Run-Length of 15m (IP20/65) and 10m (IP67/68)
- 49lm/W (IP20) - 42lm/W (IP68)

TYPICAL APPLICATION

Commercial, entertainment, healthcare, public spaces, hospitality, residential applications

CONFIGURATIONS

	Wattage/M	Voltage	Colour	Cutting Unit	IP Rating
FL4.4RGB27	18W	DC24V	RGB+2700K	100mm	20/65/67/68
FL4.4RGB30	18W	DC24V	RGB+3000K	100mm	20/65/67/68
FL4.4RGB40	18W	DC24V	RGB+4000K	100mm	20/65/67/68
FL4.4RGB60	18W	DC24V	RGB+6000K	100mm	20/65/67/68

ACCESSORIES

FOR INSTALLATION



ACC-01-10



ACC-02-10



ACC-03-10



ACC-04-10



CHANNELYNE
by LinearLyte



Aluminum extrusion makes the final piece of any architectural lighting puzzle with Flexlyne product. The spectrum allows any designer to choose from choice of width, depth, colour, diffuser, beam angles that helps you to control the lumen output, glare, hue etc.

We use high quality UV resistant PMMA Material reinforced with high-Impact resistant material, making it more flexible. This, allows for superb LED performance coupled with an excellent transmission-diffusion ratio.

We maintain quality control on profile dyes, extruding, anodizing, polishing and powder coating to avail the best light output from the fixture.

Certain models are available in a smoked diffuser finish for decorative or non-technical lighting as it absorbs around 70% of light.



Channelyne GL-1205	19
Channelyne GL-1202	20
Channelyne GL-2002	21
Channelyne GL-1303	22
Channelyne GL-1102	23
Channelyne GL-1001	24
Channelyne GL-1002	25
Channelyne GL-3030R	26
Channelyne GL-3030S	27
Channelyne GL-1203	28
Channelyne GL-1204	29
Channelyne GL-1201	30
Channelyne GL-1104	31
Channelyne GL-2001	32
Channelyne GL-1106	33
Channelyne GL-1806	34

- Alluminum profiles are used in 6063 grade with T5 temper
- Strict quality control system to ensure the finish, dimension and function
- Certain models are available in smoked diffuser finish for decorative or non-technical lighting
- The anodized ones are made with 1.2mm to 3.5mm thickness for better heat dissipation
- Narrow/wide/grazer/square or round milky lenses
- Over 150 models of alluminum profiles

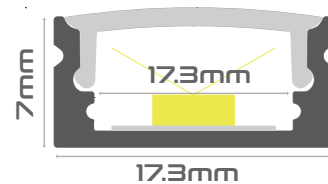




CHANNELYNE GL-1205

MAIN FEATURES

- GL1205 - surface mounted profile
- AL6063-T5 Material
- Silver/Black/White finish
- Clear/Frosted/Opaque diffuser
- Narrow/Wide/Grazer/Square or Round milky lenses
- Over 150 models of alluminum profiles



TYPICAL APPLICATION

Ceiling cove, walls and cabinets applications

CONFIGURATIONS

Profile Code	Finish	Accessory	Types of Diffuser	Comptability Matrix	
GL-1205	Silver	Plastic End Caps	Clear	70leds IP20/IP65	✓
	Black	Metal Mounting Clips	Frosted	70leds IP67/IP68	✗
	White		Opaque	140leds IP20/IP65	✓
				140leds IP67/IP68	✗
				280leds IP20/IP65	✗
				280leds IP67/IP68	✗
				Variable White IP20/IP65	✓
				Variable White IP67/IP68	✗
				RGB IP20/IP65	✓
				RGB IP67/IP68	✗
				RGBW IP20/IP65	✓
				RGBW IP67/IP68	✗

ACCESSORIES

FOR INSTALLATION

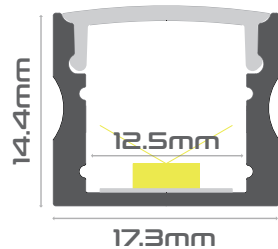




CHANNELYNE GL-1202

MAIN FEATURES

- GL1202 - surface mounted deep profile
- AL6063-T5 Material
- Silver/Black/White finish
- Clear/Frosted/Opaque diffuser
- Narrow/Wide/Grazer/Square or Round milky lenses
- Over 150 models of alluminum profiles



TYPICAL APPLICATION

Ceiling cove, walls and cabinets applications

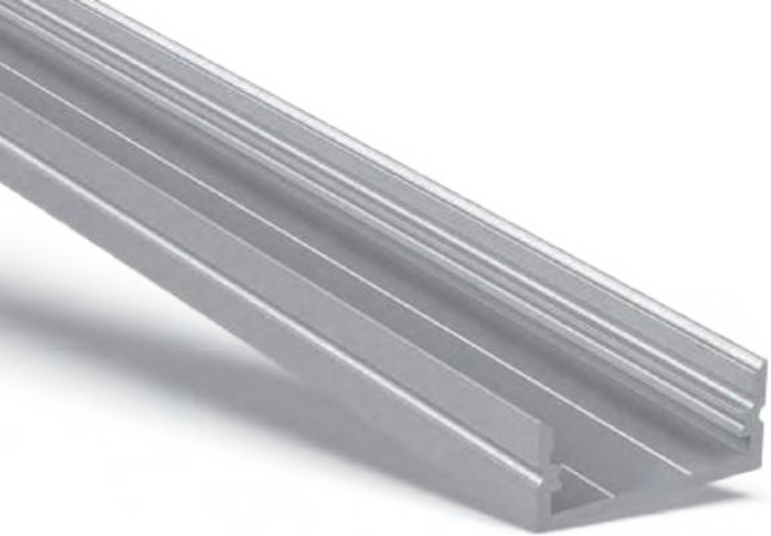
CONFIGURATIONS

Profile Code	Finish	Accessory	Types of Diffuser	Comptability Matrix	
GL-1202	Silver	Plastic End Caps	Clear	70leds IP20/IP65	✓
	Black	Metal Mounting Clips	Frosted	70leds IP67/IP68	✗
	White		Opaque	140leds IP20/IP65	✓
				140leds IP67/IP68	✗
				280leds IP20/IP65	✗
				280leds IP67/IP68	✗
				Variable White IP20/IP65	✓
				Variable White IP67/IP68	✗
				RGB IP20/IP65	✓
				RGB IP67/IP68	✗
				RGBW IP20/IP65	✓
				RGBW IP67/IP68	✗

ACCESSORIES

FOR INSTALLATION

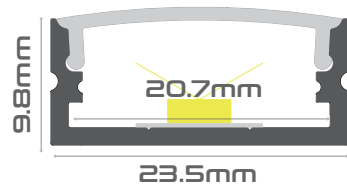




CHANNELYNE GL-2002

MAIN FEATURES

- GL2002 - surface mounted shallow and wide profile
- AL6063-T5 Material
- Silver/Black/White finish
- Clear/Frosted/Opaque diffuser
- Narrow/Wide/Grazer/Square or Round milky lenses
- Over 150 models of alluminum profiles



TYPICAL APPLICATION

Ceiling cove, walls and cabinets applications

CONFIGURATIONS

Profile Code	Finish	Accessory	Types of Diffuser	Comptability Matrix	
GL-2002	Silver	Plastic End Caps	Clear	70leds IP20/IP65	✓
	Black	Metal Mounting Clips	Frosted	70leds IP67/IP68	✓
	White		Opaque	140leds IP20/IP65	✓
				140leds IP67/IP68	✓
				280leds IP20/IP65	✗
				280leds IP67/IP68	✗
				Variable White IP20/IP65	✓
				Variable White IP67/IP68	✓
				RGB IP20/IP65	✓
				RGB IP67/IP68	✓
				RGBW IP20/IP65	✓
				RGBW IP67/IP68	✓

ACCESSORIES

FOR INSTALLATION

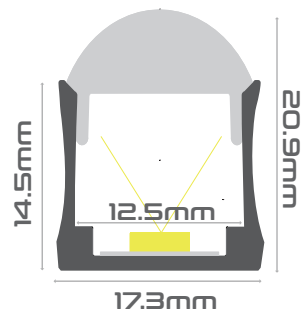




CHANNELYNE GL-1303

MAIN FEATURES

- GL1303 - surface mounted grazer profile
- AL6063-T5 Material
- Silver/Black/White finish
- Clear/Frosted/Opaque diffuser
- Narrow/Wide/Grazer/Square or Round milky lenses
- Over 150 models of alluminum profiles



TYPICAL APPLICATION

Ceiling cove, walls and cabinets applications

CONFIGURATIONS

Profile Code	Finish	Accessory	Types of Diffuser	Comptability Matrix	
GL-1303	Silver	Plastic End Caps	Clear	70leds IP20/IP65	✓
	Black	Metal Mounting Clips	Frosted	70leds IP67/IP68	✗
	White		Opaque	140leds IP20/IP65	✓
				140leds IP67/IP68	✗
				280leds IP20/IP65	✗
				280leds IP67/IP68	✗
				Variable White IP20/IP65	✓
				Variable White IP67/IP68	✗
				RGB IP20/IP65	✓
				RGB IP67/IP68	✗
				RGBW IP20/IP65	✓
				RGBW IP67/IP68	✗

ACCESSORIES

FOR INSTALLATION

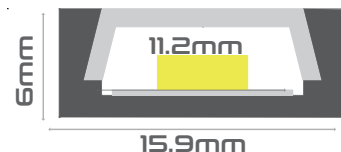




CHANNELYNE GL-1102

MAIN FEATURES

- GL1102 - surface mounted shallow profile
- AL6063-T5 Material
- Silver/Black/White finish
- Clear/Frosted/Opaque diffuser
- Narrow/Wide/Grazer/Square or Round milky lenses
- Over 150 models of alluminum profiles



TYPICAL APPLICATION

Ceiling cove, walls and cabinets application

CONFIGURATIONS

Profile Code	Finish	Accessory	Types of Diffuser	Comptability Matrix	
GL-1102	Silver	Plastic End Caps	Clear	70leds IP20/IP65	✓
	Black	Metal Mounting Clips	Frosted	70leds IP67/IP68	✗
	White		Opaque	140leds IP20/IP65	✓
				140leds IP67/IP68	✗
				280leds IP20/IP65	✗
				280leds IP67/IP68	✗
				Variable White IP20/IP65	✓
				Variable White IP67/IP68	✗
				RGB IP20/IP65	✓
				RGB IP67/IP68	✗
				RGBW IP20/IP65	✓
				RGBW IP67/IP68	✗

ACCESSORIES

FOR INSTALLATION

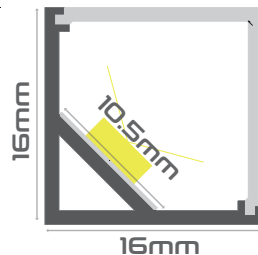




CHANNELYNE GL-1001

MAIN FEATURES

- GL1001 - corner mounted square diffuser
- AL6063-T5 Material
- Silver/Black/White finish
- Clear/Frosted/Opaque diffuser
- Narrow/Wide/Grazer/Square or Round milky lenses
- Over 150 models of alluminum profiles



TYPICAL APPLICATION

Furniture and cabinet application

CONFIGURATIONS

Profile Code	Finish	Accessory	Types of Diffuser	Comptability Matrix	
GL-1001	Silver	Plastic End Caps	Clear	70leds IP20/IP65	✓
	Black	Metal Mounting Clips	Frosted	70leds IP67/IP68	✗
	White		Opaque	140leds IP20/IP65	✓
				140leds IP67/IP68	✗
				280leds IP20/IP65	✗
				280leds IP67/IP68	✗
				Variable White IP20/IP65	✓
				Variable White IP67/IP68	✗
				RGB IP20/IP65	✓
				RGB IP67/IP68	✗
				RGBW IP20/IP65	✓
				RGBW IP67/IP68	✗

ACCESSORIES

FOR
INSTALLATION

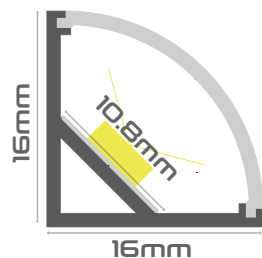




CHANNELYNE GL-1002

MAIN FEATURES

- GL1002 - corner mounted round diffuser
- AL6063-T5 Material
- Silver/Black/White finish
- Clear/Frosted/Opaque diffuser
- Narrow/Wide/Grazer/Square or Round milky lenses
- Over 150 models of alluminum profiles



TYPICAL APPLICATION

Furniture and cabinet application

CONFIGURATIONS

Profile Code	Finish	Accessory	Types of Diffuser	Comptability Matrix	
GL-1002	Silver	Plastic End Caps	Clear	70leds IP20/IP65	✓
	Black	Metal Mounting Clips	Frosted	70leds IP67/IP68	✗
	White		Opaque	140leds IP20/IP65	✓
				140leds IP67/IP68	✗
				280leds IP20/IP65	✗
				280leds IP67/IP68	✗
				Variable White IP20/IP65	✓
				Variable White IP67/IP68	✗
				RGB IP20/IP65	✓
				RGB IP67/IP68	✗
				RGBW IP20/IP65	✓
				RGBW IP67/IP68	✗

ACCESSORIES

FOR
INSTALLATION

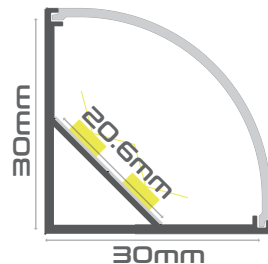




CHANNELYNE GL-3030R

MAIN FEATURES

- GL3030R - large corner mounted round diffuser
- AL6063-T5 Material
- Silver/Black/White finish
- Clear/Frosted/Opaque diffuser
- Narrow/Wide/Grazer/Square or Round milky lenses
- Over 150 models of alluminum profiles



TYPICAL APPLICATION

Furniture and cabinet application

CONFIGURATIONS

Profile Code	Finish	Accessory	Types of Diffuser	Comptability Matrix	
GL-3030R	Silver	Plastic End Caps	Clear	70leds IP20/IP65	✓
	Black	Metal Mounting Clips	Frosted	70leds IP67/IP68	✓
	White		Opaque	140leds IP20/IP65	✓
				140leds IP67/IP68	✓
				280leds IP20/IP65	✓
				280leds IP67/IP68	✓
				Variable White IP20/IP65	✓
				Variable White IP67/IP68	✓
				RGB IP20/IP65	✓
				RGB IP67/IP68	✓
				RGBW IP20/IP65	✓
				RGBW IP67/IP68	✓

ACCESSORIES

FOR
INSTALLATION

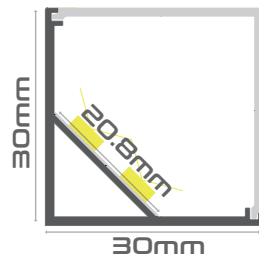




CHANNELYNE GL-3030S

MAIN FEATURES

- GL3030S - large corner mounted square diffuser
- AL6063-T5 Material
- Silver/Black/White finish
- Clear/Frosted/Opaque diffuser
- Narrow/Wide/Grazer/Square or Round milky lenses
- Over 150 models of alluminum profiles



TYPICAL APPLICATION

Furniture and cabinet application

CONFIGURATIONS

Profile Code	Finish	Accessory	Types of Diffuser	Comptability Matrix	
GL-3030S	Silver	Plastic End Caps	Clear	70leds IP20/IP65	✓
	Black	Metal Mounting Clips	Frosted	70leds IP67/IP68	✓
	White		Opaque	140leds IP20/IP65	✓
				140leds IP67/IP68	✓
				280leds IP20/IP65	✓
				280leds IP67/IP68	✓
				Variable White IP20/IP65	✓
				Variable White IP67/IP68	✓
				RGB IP20/IP65	✓
				RGB IP67/IP68	✓
				RGBW IP20/IP65	✓
				RGBW IP67/IP68	✓

ACCESSORIES

FOR
INSTALLATION

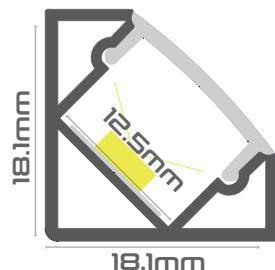




CHANNELYNE GL-1203

MAIN FEATURES

- GL1203 - corner mounted flat diffuser
- AL6063-T5 Material
- Silver/Black/White finish
- Clear/Frosted/Opaque diffuser
- Narrow/Wide/Grazer/Square or Round milky lenses
- Over 150 models of alluminum profiles



TYPICAL APPLICATION

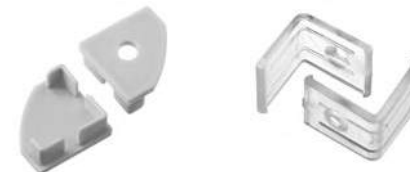
Furniture and cabinet application

CONFIGURATIONS

Profile Code	Finish	Accessory	Types of Diffuser	Comptability Matrix	
GL-1203	Silver	Plastic End Caps	Clear	70leds IP20/IP65	✓
	Black	Plastic Mounting Clips	Frosted	70leds IP67/IP68	✗
	White		Opaque	140leds IP20/IP65	✓
				140leds IP67/IP68	✗
				280leds IP20/IP65	✗
				280leds IP67/IP68	✗
				Variable White IP20/IP65	✓
				Variable White IP67/IP68	✗
				RGB IP20/IP65	✓
				RGB IP67/IP68	✗
				RGBW IP20/IP65	✓
				RGBW IP67/IP68	✗

ACCESSORIES

FOR
INSTALLATION

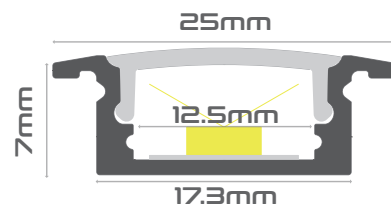




CHANNELYNE GL-1204

MAIN FEATURES

- GL1204 - recess mounted profile
- AL6063-T5 Material
- Silver/Black/White finish
- Clear/Frosted/Opaque diffuser
- Narrow/Wide/Grazer/Square or Round milky lenses
- Over 150 models of alluminum profiles



TYPICAL APPLICATION

Ceiling, wall and furniture application

CONFIGURATIONS

Profile Code	Finish	Accessory	Types of Diffuser	Comptability Matrix	
GL-1204	Silver	Plastic End Caps	Clear	70leds IP20/IP65	✓
	Black	Metal Mounting Clips	Frosted	70leds IP67/IP68	✗
	White		Opaque	140leds IP20/IP65	✓
				140leds IP67/IP68	✗
				280leds IP20/IP65	✗
				280leds IP67/IP68	✗
				Variable White IP20/IP65	✓
				Variable White IP67/IP68	✗
				RGB IP20/IP65	✓
				RGB IP67/IP68	✗
				RGBW IP20/IP65	✓
				RGBW IP67/IP68	✗

ACCESSORIES

FOR
INSTALLATION

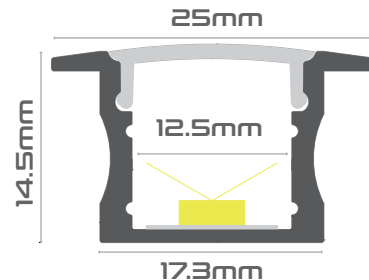




CHANNELYNE GL-1201

MAIN FEATURES

- GL1201 - recess mounted deep profile
- AL6063-T5 Material
- Silver/Black/White finish
- Clear/Frosted/Opaque diffuser
- Narrow/Wide/Grazer/Square or Round milky lenses
- Over 150 models of alluminum profiles



TYPICAL APPLICATION

Ceiling, wall and furniture application

CONFIGURATIONS

Profile Code	Finish	Accessory	Types of Diffuser	Comptability Matrix	
GL-1201	Silver	Plastic End Caps	Clear	70leds IP20/IP65	✓
	Black	Metal Mounting Clips	Frosted	70leds IP67/IP68	✗
	White		Opaque	140leds IP20/IP65	✓
				140leds IP67/IP68	✗
				280leds IP20/IP65	✗
				280leds IP67/IP68	✗
				Variable White IP20/IP65	✓
				Variable White IP67/IP68	✗
				RGB IP20/IP65	✓
				RGB IP67/IP68	✗
				RGBW IP20/IP65	✓
				RGBW IP67/IP68	✗

ACCESSORIES

FOR
INSTALLATION

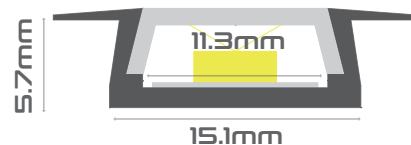




CHANNELYNE GL-1104

MAIN FEATURES

- GL1104 - recess mounted shallow profile
- AL6063-T5 Material
- Silver/Black/White finish
- Clear/Frosted/Opaque diffuser
- Narrow/Wide/Grazer/Square or Round milky lenses
- Over 150 models of alluminum profiles



TYPICAL APPLICATION

Ceiling, wall and furniture application

CONFIGURATIONS

Profile Code	Finish	Accessory	Types of Diffuser	Comptability Matrix	
GL-1104	Silver	Plastic End Caps	Clear	70leds IP20/IP65	✓
	Black	Metal Mounting Clips	Frosted	70leds IP67/IP68	✗
	White		Opaque	140leds IP20/IP65	✓
				140leds IP67/IP68	✗
				280leds IP20/IP65	✗
				280leds IP67/IP68	✗
				Variable White IP20/IP65	✓
				Variable White IP67/IP68	✗
				RGB IP20/IP65	✓
				RGB IP67/IP68	✗
				RGBW IP20/IP65	✓
				RGBW IP67/IP68	✗

ACCESSORIES

FOR
INSTALLATION

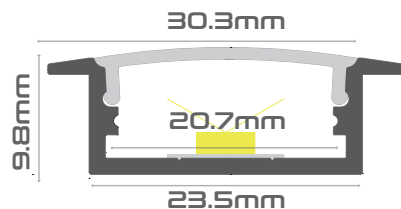




CHANNELYNE GL-2001

MAIN FEATURES

- GL2001 - recess mounted shallow and wide profile
- AL6063-T5 Material
- Silver/Black/White finish
- Clear/Frosted/Opaque diffuser
- Narrow/Wide/Grazer/Square or Round milky lenses
- Over 150 models of alluminum profiles



TYPICAL APPLICATION

Ceiling, wall and furniture application

CONFIGURATIONS

Profile Code	Finish	Accessory	Types of Diffuser	Comptability Matrix	
GL-2001	Silver	Plastic End Caps	Clear	70leds IP20/IP65	<input checked="" type="checkbox"/>
	Black	Metal Mounting Clips	Frosted	70leds IP67/IP68	<input checked="" type="checkbox"/>
	White		Opaque	140leds IP20/IP65	<input checked="" type="checkbox"/>
				140leds IP67/IP68	<input checked="" type="checkbox"/>
				280leds IP20/IP65	<input checked="" type="checkbox"/>
				280leds IP67/IP68	<input checked="" type="checkbox"/>
				Variable White IP20/IP65	<input checked="" type="checkbox"/>
				Variable White IP67/IP68	<input checked="" type="checkbox"/>
				RGB IP20/IP65	<input checked="" type="checkbox"/>
				RGB IP67/IP68	<input checked="" type="checkbox"/>
				RGBW IP20/IP65	<input checked="" type="checkbox"/>
				RGBW IP67/IP68	<input checked="" type="checkbox"/>

ACCESSORIES

FOR
INSTALLATION

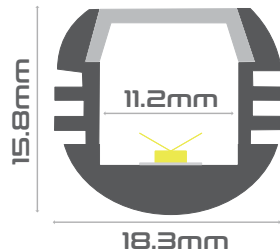




CHANNELYNE GL-1106

MAIN FEATURES

- GL1106 - surface mounted round profile
- AL6063-T5 Material
- Silver/Black/White finish
- Clear/Frosted/Opaque diffuser
- Narrow/Wide/Grazer/Square or Round milky lenses
- Over 150 models of alluminum profiles



TYPICAL APPLICATION

Closed cabinet application

CONFIGURATIONS

Profile Code	Finish	Accessory	Types of Diffuser	Comptability Matrix	
GL-1106	Silver	Plastic End Caps	Clear	70leds IP20/IP65	✓
	Black	Metal Mounting Clips	Frosted	70leds IP67/IP68	✗
	White		Opaque	140leds IP20/IP65	✓
				140leds IP67/IP68	✗
				280leds IP20/IP65	✗
				280leds IP67/IP68	✗
				Variable White IP20/IP65	✓
				Variable White IP67/IP68	✗
				RGB IP20/IP65	✓
				RGB IP67/IP68	✗
				RGBW IP20/IP65	✓
				RGBW IP67/IP68	✗

ACCESSORIES

FOR
INSTALLATION

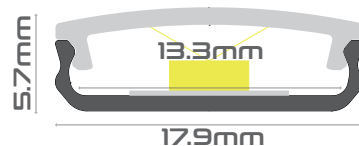




CHANNELYNE GL-1806

MAIN FEATURES

- GL1806 - recess mounted bendable profile
- AL6063-T5 Material
- Silver/Black/White finish
- Clear/Frosted/Opaque diffuser
- Narrow/Wide/Grazer/Square or Round milky lenses
- Over 150 models of alluminum profiles



TYPICAL APPLICATION

Archways, curved cove ceilings and pendant application

CONFIGURATIONS

Profile Code	Finish	Accessory	Types of Diffuser	Comptability Matrix	
GL-1806	Silver	Plastic End Caps	Clear	70leds IP20/IP65	✓
	Black	Metal Mounting Clips	Frosted	70leds IP67/IP68	✗
	White		Opaque	140leds IP20/IP65	✓
				140leds IP67/IP68	✗
				280leds IP20/IP65	✗
				280leds IP67/IP68	✗
				Variable White IP20/IP65	✓
				Variable White IP67/IP68	✗
				RGB IP20/IP65	✓
				RGB IP67/IP68	✗
				RGBW IP20/IP65	✓
				RGBW IP67/IP68	✗

ACCESSORIES

FOR INSTALLATION





NEONYLYNE
by LinearLyte



The NeonLyne range offers flexible silicone encapsulated LED linear strips for internal and external lighting applications.

Bright lines of uniform light can be used for accent lighting on buildings, signage, step lighting, anywhere a low wattage alternative to conventional neon is required.

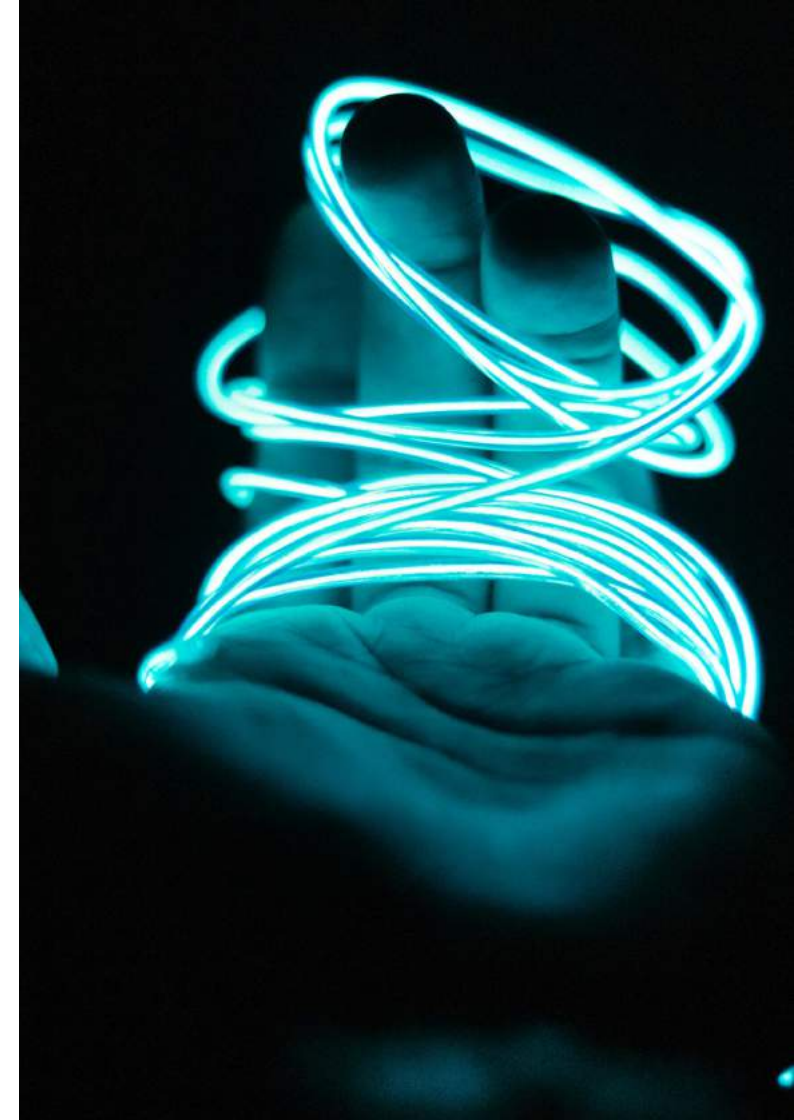
The protective casing prevents internal damage to LED components and protects from UV damage, is waterproof, step, flame and solvent resistant.

The bend radius is specific to each product in the range. Adherence to the bend radius data sheets when installing NeonLyne products is essential to obtain maximum performance and prevents damage.

Colour temperature options 2200K – 8000K in White, RGB, RGBW, RGBA and Variable White (Tunable) are available together with a full spectrum of lumen output and wattage per metre options. DMX and Pixel (digital) compatible.

NeonLyne is available on spools or can be pre-cut to custom lengths at our manufacturing facility. Pre-cut lengths guarantee fully encapsulated protection.

NeonLyne is extremely adaptable, it can be mounted, recessed and semi-recessed dependent on required application



Side Bend

NL 1120M	35
NL 1120A	36
NL 1118S	37
NL 0712S	38
NL 1617ES	39
NL 1221S	40
NL 1716H	41

Top Bend

NL 1614A	42
NL 1614T	43
NL 1410T	44
NL 2412T	45
NL 1716V	46

- Diffuser - Better uniformity
- Silicone protector - 10% efficiency higher and ESDprotection
- Double protection PCB- Double protection for each LED
- Reinforced sheet - 20kg tensile strength and low expansivity
- Inner wire - LEDcurrent and heat uniform tech
- Reflector - High reflectivity and anti-yellowish
- Cable cap - Siliconeinjection tech for better waterproof-ability
- Slide able clips on profile - Protective structure for long product's thermal expansion and cold shrinkage



NL 1120M

MAIN FEATURES

- Side lighting and side bending
- Lumileds or Bridgelux LED inside
- Dual-colour silicone extrusion
- UV and yellowish resistant
- IP67 and salt-mist proof
- L 70B50 > 50,000hrs
- UL 94 V-0
- Easy installation and re-connect accessories
- 400lm per meter @2700K
- 12W/mtr, 10mtrs per roll

TYPICAL APPLICATION

- Building and sign outline lighting
- General and cove lighting
- Ships, boats and trucks outline lighting
- Bathroom, spa room lighting



CONFIGURATIONS

	Voltage	Product Colour	Cutting Unit
NL-1120M-2400	DC24V	2400K	100mm
NL-1120M-2700	DC24V	2700K	100mm
NL-1120M-3000	DC24V	3000K	100mm
NL-1120M-4000	DC24V	4000K	100mm
NL-1120M-RGB	DC24V	RGB	83mm
NL-1120M-RGBW	DC24V	RGBW	83mm

ACCESSORIES

FOR
INSTALLATION



FOR
CONNECTION





NL 1120A

MAIN FEATURES

- Side lighting and side bending
- Lumileds or Bridgelux LEDinside
- Dual-colour silicone extrusion
- UV and yellowish resistant
- IP67 and salt-mist proof
- L 70B50 > 50,000hrs
- UL 94 V-0
- Easy installation and re-connect accessories
- 400lm per meter @2700K
- 12W/mtr, 10mtrs per roll

TYPICAL APPLICATION

- LED neon letter or sign
- Building and sign outline lighting
- General and cove lighting
- Ships, boats and trucks outline lighting
- Bathroom, spa room lighting



CONFIGURATIONS

	Voltage	Product Colour	Cutting Unit
NL-1120A-2400	DC24V	2400K	100mm
NL-1120A-2700	DC24V	2700K	100mm
NL-1120A-3000	DC24V	3000K	100mm
NL-1120A-4000	DC24V	4000K	100mm
NL-1120A-DRGB	DC24V	DRGB PIXEL	71.5mm
NL-1120A-RGBW	DC24V	RGBW	83mm

ACCESSORIES

FOR INSTALLATION



FOR CONNECTION





NL1118S

MAIN FEATURES

- Side lighting and side bending
- Lumileds or Bridgelux LED inside
- Dual-colour silicone extrusion
- UV and yellowish resistant
- IP67 and salt-mist proof
- L 70B50 > 50,000hrs
- UL 94 V-0
- Easy installation and re-connect accessories
- 420lm per meter @2700K
- 12W/mtr, 10mtrs per roll

TYPICAL APPLICATION

- LED neon letter or sign
- Building and sign outline lighting
- General and cove lighting
- Ships, boats and trucks outline lighting
- Bathroom, spa room lighting



CONFIGURATIONS

	Voltage	Product Colour	Cutting Unit
NL-1118S-2400	DC24V	2400K	100mm
NL-1118S-2700	DC24V	2700K	100mm
NL-1118S-3000	DC24V	3000K	100mm
NL-1118S-4000	DC24V	4000K	100mm
NL-1118S-DRGB	DC24V	DRGB PIXEL	71.5mm
NL-1118S-RGBW	DC24V	RGBW	83mm

ACCESSORIES

FOR INSTALLATION



FOR CONNECTION



NL 0712S

MAIN FEATURES

- Side lighting and side bending
- Lumileds or Bridgelux LEDinside
- Dual-colour silicone extrusion
- UV and yellowish resistant
- IP67 and salt-mist proof
- L70B50 > 50,000hrs
- UL 94 V-0
- Easy installation and re-connect accessories
- 275lm per meter @2700K
- 9W/mtr, 10mtrs per roll



TYPICAL APPLICATION

- LED neon letter or sign
- Building and sign outline lighting
- General and cove lighting
- Ships, boats and trucks outline lighting
- Bathroom, spa room lighting

12mm

10.5mm

7.5mm



CONFIGURATIONS

	Voltage	Product Colour	Cutting Unit
NL-0712S-2400	DC24V	2400K	50mm
NL-0712S-2700	DC24V	2700K	50mm
NL-0712S-3000	DC24V	3000K	50mm
NL-0712S-4000	DC24V	4000K	50mm
NL-0712S-5000	DC24V	5000K	50mm

ACCESSORIES

FOR INSTALLATION



FOR CONNECTION

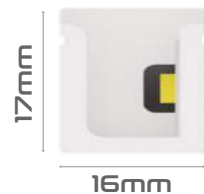




NL 1617ES

MAIN FEATURES

- Top lighting and top bending
- Lumileds or Bridgelux LEDinside
- Dual-colour silicone extrusion
- UV and yellowish resistant
- IP67 - water resistant
- L 70B50 > 50,000hrs
- UL 94 V-0
- Easy installation and re-connect accessories
- 991lm per meter @2700K
- 16W/mtr, 10mtrs per roll



TYPICAL APPLICATION

- Light engine for special linear luminaries
- Building and sign outline lighting
- General and cove lighting
- Ships, boats and trucks outline lighting
- Bathroom, spa room lighting

CONFIGURATIONS

	Voltage	Product Colour	Cutting Unit
NL-1617ES-2700	DC24V	2700K	55.56mm
NL-1617ES-3000	DC24V	3000K	55.56mm
NL-1617ES-3500	DC24V	3500K	55.56mm
NL-1617ES-4000	DC24V	4000K	55.56mm
NL-1617ES-5700	DC24V	5700K	55.56mm

ACCESSORIES

FOR INSTALLATION



FOR CONNECTION





NL1221S

MAIN FEATURES

- Side lighting and side bending
- Nichia LEDs
- Dual-colour silicone extrusion
- UV and yellowish resistant
- IP68 - waterproof
- L 70B50 > 50,000hrs
- UL 94 V-0
- Easy installation and re-connect accessories
- 420lm per meter @2700K
- 12W/mtr, 10mtrs per roll
- PVC material used for underwater application

TYPICAL APPLICATION

LED underwater application - underwater cove, fountains, swimming pools, step lighting



CONFIGURATIONS

	Voltage	Product Colour	Cutting Unit
NL-1221S-2200	DC24V	2200K	100mm
NL-1221S-2700	DC24V	2700K	100mm
NL-1221S-3000	DC24V	3000K	100mm
NL-1221S-4000	DC24V	4000K	100mm
NL-1221S-5700	DC24V	5700K	100mm
NL-1221S-RGB27	DC24V	RGB + 2700K	100mm
NL-1221S-RGB30	DC24V	RGB + 3000K	100mm
NL-1221S-RGB40	DC24V	RGB + 4000K	100mm

ACCESSORIES

FOR INSTALLATION



FOR CONNECTION

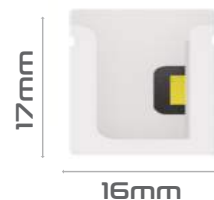




NL 1716H

MAIN FEATURES

- Top lighting and side bending
- Nichia LEDs
- Dual-colour silicone extrusion
- UV and yellowish resistant
- IP68 - waterproof
- L 70B50 > 50,000hrs
- UL 94 V-0
- Easy installation and re-connect accessories
- 421lm per meter @2700K
- 12W/mtr, 10mtrs per roll
- PVC material used for underwater application



TYPICAL APPLICATION

LED underwater application - underwater cove, fountains, swimming pools, step lighting

CONFIGURATIONS

	Voltage	Product Colour	Cutting Unit
NL-1716H-2200	DC24V	2200K	55.56mm
NL-1716H-2700	DC24V	2700K	55.56mm
NL-1716H-3000	DC24V	3000K	55.56mm
NL-1716H-4000	DC24V	4000K	55.56mm
NL-1716H-5700	DC24V	5700K	55.56mm
NL-1716H-RGB27	DC24V	RGB + 2700K	83.34mm
NL-1716H-RGB30	DC24V	RGB + 3000K	83.34mm
NL-1716H-RGB40	DC24V	RGB + 4000K	83.34mm

ACCESSORIES

FOR INSTALLATION



FOR CONNECTION





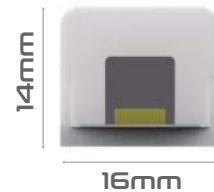
NL 1614A

MAIN FEATURES

- 3-surface lighting and top bending
- Lumileds or Bridgelux LEDinside
- Dual-colour silicone extrusion
- UV and yellowish resistant
- IP67 and salt-mist proof
- L70B50 > 50,000hrs
- UL 94 V-0
- Easy installation and re-connect accessories
- 950lm per meter @2700K
- 12W/mtr, 10mtrs per roll

TYPICAL APPLICATION

- LED neon letter or sign
- Building and sign outline lighting
- General and cove lighting
- Ships, boats and trucks outline lighting
- Bathroom, spa room lighting



CONFIGURATIONS

	Voltage	Product Colour	Cutting Unit
NL-1614A-2400	DC24V	2400K	100mm
NL-1614A-2700	DC24V	2700K	100mm
NL-1614A-3000	DC24V	3000K	100mm
NL-1614A-4000	DC24V	4000K	100mm
NL-1614A-5000	DC24V	5000K	100mm
NL-1614A-DRGB	DC24V	DRGB PIXEL	71.5mm
NL-1614A-RGBW	DC24V	RGBW	71.5mm

ACCESSORIES

FOR INSTALLATION



FOR CONNECTION



NL 1614T

MAIN FEATURES

- Top lighting and top bending
- Lumileds or Bridgelux LEDinside
- Dual-colour silicone extrusion
- UV and yellowish resistant
- IP67 and salt-mist proof
- L 70B50 > 50,000hrs
- UL 94 V-0
- Easy installation and re-connect accessories
- 900lm per meter @2700K
- 12W/mtr, 10mtrs per roll

TYPICAL APPLICATION

- Building and sign outline lighting
- Freezer and cooler lighting
- General and cove lighting
- Ships, boats and trucks outline lighting
- Bathroom, spa room lighting



CONFIGURATIONS

	Voltage	Product Colour	Cutting Unit
NL-1614T-2400	DC24V	2400K	100mm
NL-1614T-2700	DC24V	2700K	100mm
NL-1614T-3000	DC24V	3000K	100mm
NL-1614T-4000	DC24V	4000K	100mm
NL-1614T-RGB	DC24V	RGB	100mm
NL-1614T-DRGB	DC24V	DRGB PIXEL	71.5mm
NL-1614T-RGBW	DC24V	RGBW	71.5mm

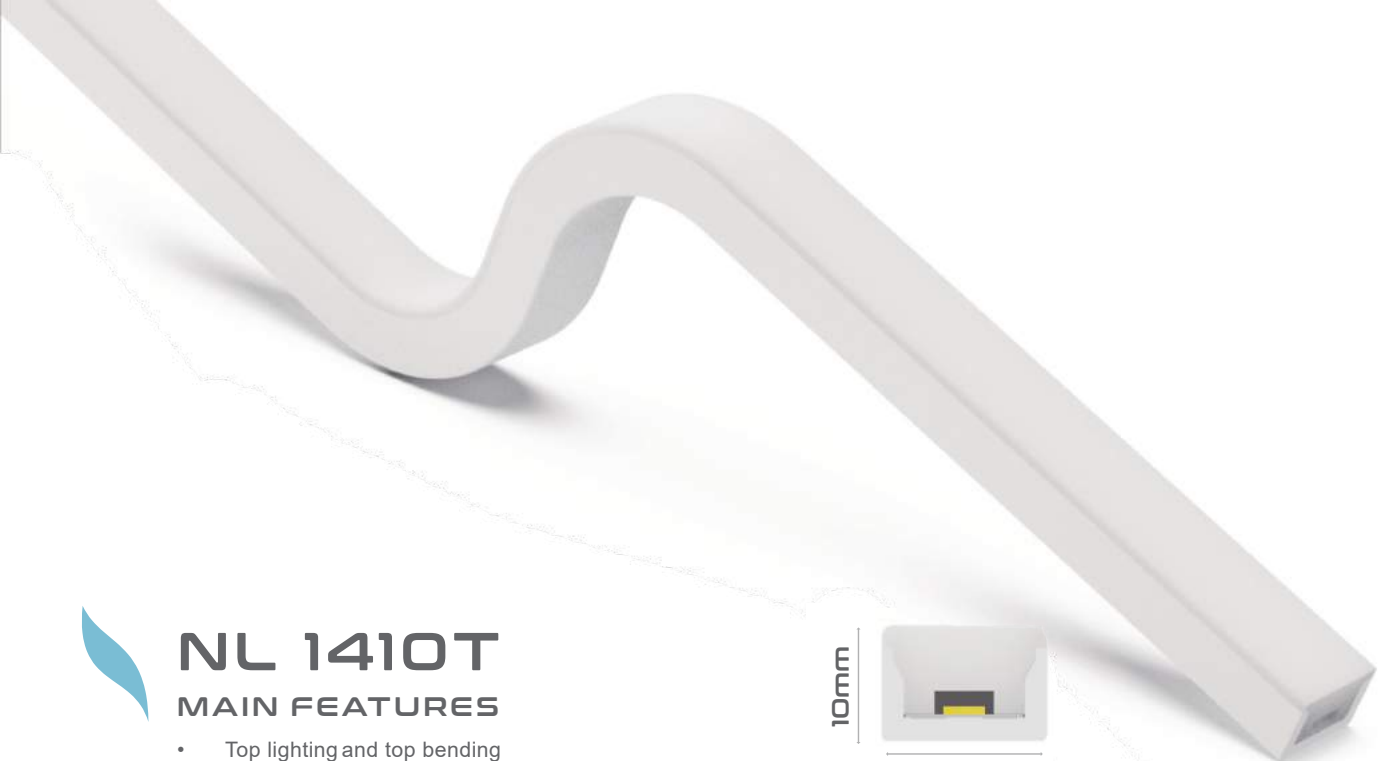
ACCESSORIES

FOR INSTALLATION



FOR CONNECTION





NL 1410T MAIN FEATURES

- Top lighting and top bending
- Lumileds LED inside
- Dual-colour silicone extrusion
- UV and yellowish resistant
- IP67 and salt-mist proof
- L70B50 > 50,000hrs
- UL 94 V-0
- Easy installation and connect accessories
- 800lm per meter @2700K
- 10W/mtr, 10mtrs per roll



TYPICAL APPLICATION

- Kitchen and bathroom lighting
- Freezer and cooler lighting
- General and cove lighting
- Shelf lighting

CONFIGURATIONS

	Voltage	Product Colour	Cutting Unit
NL-1410T-2400	DC24V	2400K	100mm
NL-1410T-2700	DC24V	2700K	100mm
NL-1410T-3000	DC24V	3000K	100mm
NL-1410T-4000	DC24V	4000K	100mm
NL-1410T-5000	DC24V	5000K	100mm
NL-1410T-RGB	DC24V	RGB	71.5mm

ACCESSORIES

FOR
INSTALLATION



FOR
CONNECTION



NL 2412T

MAIN FEATURES

- Top lighting and top bending
- Lumileds LED inside
- Dual-colour silicone extrusion
- UV and yellowish resistant
- IP67 and salt-mist proof
- L 70B50 > 50,000hrs
- UL 94 V-0
- Easy installation and re-connect accessories
- 2000lm per meter @2700K
- 24W/mtr, 10mtrs per roll

TYPICAL APPLICATION

- Light engine for special linear luminaries
- Building and sign outline lighting
- General and cove lighting
- Ships, boats and trucks outline lighting
- Bathroom, spa room lighting



CONFIGURATIONS

	Voltage	Product Colour	Cutting Unit
NL-2412T-2700	DC24V	2700K	100mm
NL-2412T-3000	DC24V	3000K	100mm
NL-2412T-4000	DC24V	4000K	100mm

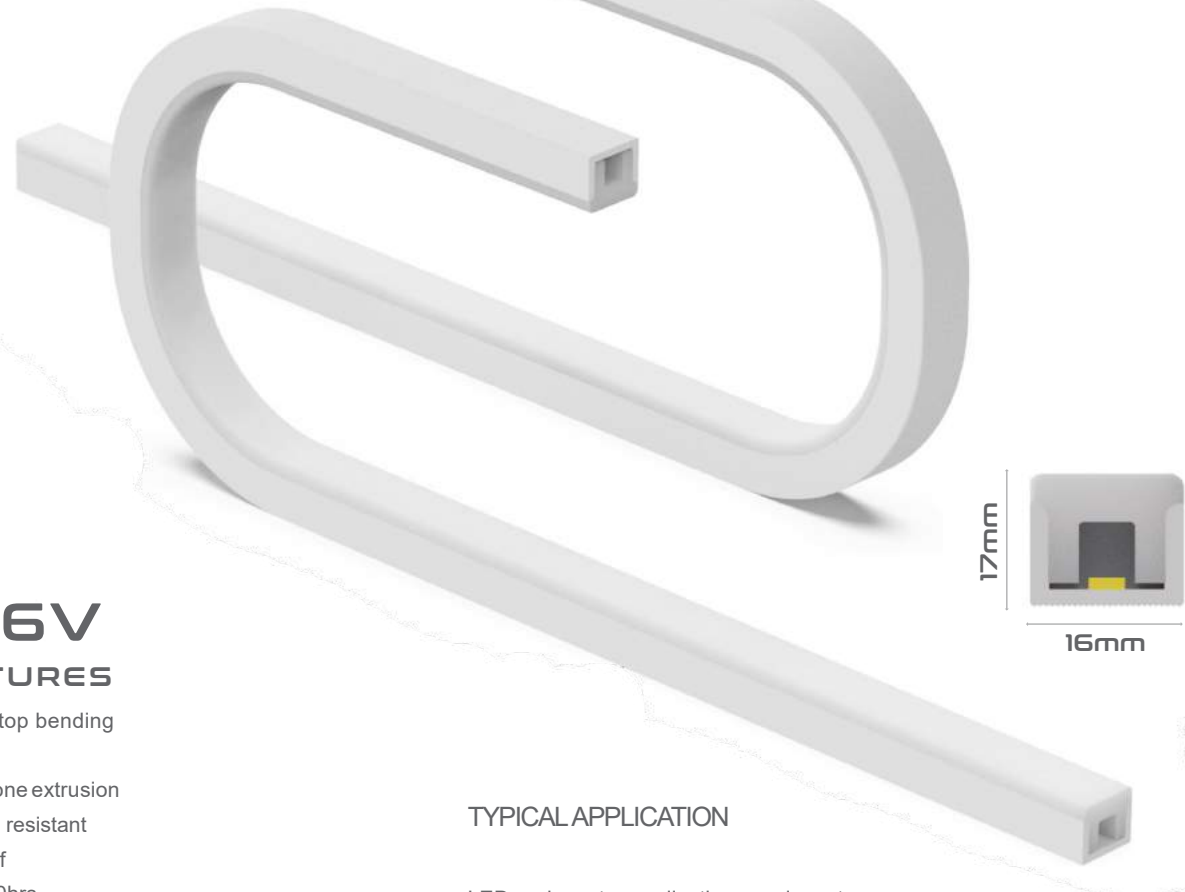
ACCESSORIES

FOR INSTALLATION



FOR CONNECTION





NL 1716V MAIN FEATURES

- Top lighting and top bending
- Nichia LEDs
- Dual-colour silicone extrusion
- UV and yellowish resistant
- IP68 - waterproof
- L 70B50 > 50,000hrs
- UL 94 V-0
- Easy installation and re-connect accessories
- 421lm per meter @2700K
- 12W/mtr, 10mtrs per roll
- PVC material used for underwater application

TYPICAL APPLICATION

LED underwater application - underwater cove, fountains, swimming pools, step lighting

CONFIGURATIONS

	Voltage	Product Colour	Cutting Unit
NL-1716V-2200	DC24V	2200K	55.56mm
NL-1716V-2700	DC24V	2700K	55.56mm
NL-1716V-3000	DC24V	3000K	55.56mm
NL-1716V-4000	DC24V	4000K	55.56mm
NL-1716V-5700	DC24V	5700K	55.56mm
NL-1716V-RGB27	DC24V	RGB + 2700K	83.34mm
NL-1716V-RGB30	DC24V	RGB + 3000K	83.34mm
NL-1716V-RGB40	DC24V	RGB + 4000K	83.34mm

ACCESSORIES

FOR INSTALLATION



FOR CONNECTION





OMNILYNE
by LinearLyte



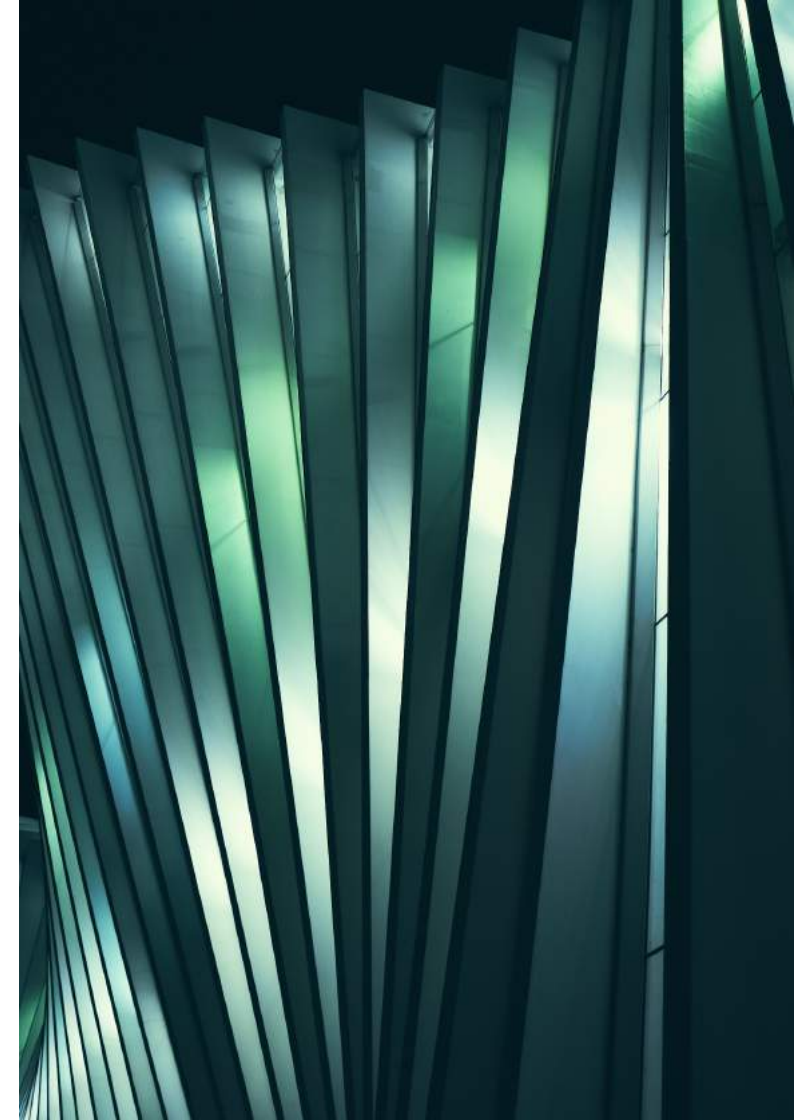
Our newest member of the family has just arrived. Bridging the gap between our Neonlyne and Prolyne we're able to offer something revolutionary to the industry. We bring an alternative grazing product to the market with limitless application.

This is an optical lens type flexible LED, compatible in both top and side bending mechanics.

Colour temperature options ranging from 2200K to 5000K.

Can be used as an IP67 strip alone or, mounted into an aluminum profile along with additional accessories to be formatted as a rigid linear wall washer.

Its soft and bendable design makes it ideal for curved surface mounting for the illumination of large surfaces i.e buildings or walls in outdoor areas, as well as ambient indoor application.



Omnilyne 2716TS

47

Omnilyne 2716S

48

- Introducing our newest collection - the Omnilyne
- High efficient LEDs inside
- Free-bending and twistable structure for varied application
- Dual-colour silicone extrusion and UV and yellowish resistance
- Gives focused and directional lighting
- Applicable in both curved and straight lighting applications
- Top bendable, side bendable and freely bendable models available





CONFIGURATIONS

Finish	Length	Colour	Beam	Mounting	Dimming Type	Power Feed
White	500mm	2700K	20°	Tiltstand	SWD - on/off	S - Side Feed
	1000mm	3000K	30°	Steel Chain	DALI	I - Inline Feed
	5000mm	4000K	45°	Al Profile	0-10	B - Bottom Feed
		5000K	60°			
			20° x 45°			

OMNILYNE 2716TS

MAIN FEATURES

- Free Bending
- Dual-colour silicone extrusion
- UV and yellowish resistant
- IP67 and salt-mist proof
- L 70B50 > 50,000h rs
- UL 94 V-0
- Easy installation and re-connect accessories
- 1780lm per meter @2700K
- 24W/mtr

TYPICAL APPLICATION

Building wall-washer, exhibition halls, entertainment plazas and bridges, specialist linear luminaires and grazers.



ACCESSORIES

FOR INSTALLATION

FOR CONNECTION





CONFIGURATIONS

Finish	Length	Colour	Beam	Mounting	Dimming Type	Power Feed
White	500mm	2700K	20°	Tiltstand	SWD - on/off	S - Side Feed
	1000mm	3000K	30°	Steel Chain	DALI	I - Inline Feed
	5000mm	4000K	45°	Al Profile	0-10	B - Bottom Feed
		5000K	60°		DMX	
			20° x 45°			



OMNILYNE 2716T

MAIN FEATURES

- Top Bending
- UV and yellowish resistant
- IP67 and salt-mist proof
- L 70B50 > 50,000h rs
- UL 94 V-0
- Easy installation and re-connect accessories
- 1750lm per meter @2700K
- 24W/mtr

TYPICAL APPLICATION

Building wall-washer, exhibition halls, entertainment plazas and bridges, specialist linear luminaries and grazers.



ACCESSORIES

FOR INSTALLATION

FOR CONNECTION







www.linearlyte.com

info@linearlyte.com

UK & UAE

© 2022 Linearlyte. All rights reserved.



The future is bright



LinearLyte
The Collection