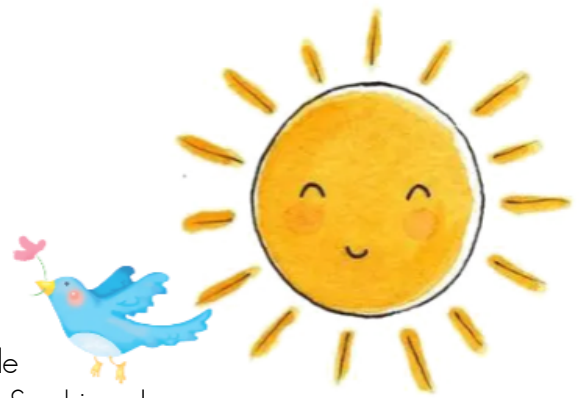




Dear Sunshine Day School Families,

Fifteen years ago when I opened the doors of Sunshine Day School, I couldn't have imagined what it would become. What started as a simple dream is now a wonderful, loving, joy filled reality! This year my first full Sunshine class graduated from high school! Some things have changed over the years, but the laughter, creativity, and friendships that make our school a truly special place remain. Thank you from the bottom of my heart for your role in making Sunshine what it is today.



With all these years of play, our school playground needs to be replaced. Our current playset has brought countless smiles over the years, but it's time for a new one. A new playground will offer a safer, more engaging space where our children can climb, run, explore, and build confidence through play.

The cost of playground equipment has doubled in the 12 years between purchasing sets. As a fundraiser to help cover the now \$13,000 set, we are offering our families, past and present an opportunity to commemorate their time at Sunshine by making a donation—big or small—to the project. Your support will go directly toward the purchase of the new equipment.

Here's how you can help:

- Donate through venmo: @sunshinedayschool
- Send a check made out to *Sunshine Day School* with "Playground Fund" in the memo to 209 Phillips Dr., Wallace, NC 28466
- Share our fundraising efforts with family and friends
- Include your child's name as you would want it to appear on our sign.

As a thank-you, all donors will be noted on our "Little Rays of Sunshine" playground sign, and recognized as part of a ribbon-cutting celebration once the new playground is complete! Thank you for helping us build something wonderful together and for helping make Sunshine Day School a place where children can shine inside and out.

Thank you,
Mrs. Georgia



Little Rays of Sunshine Playground Project

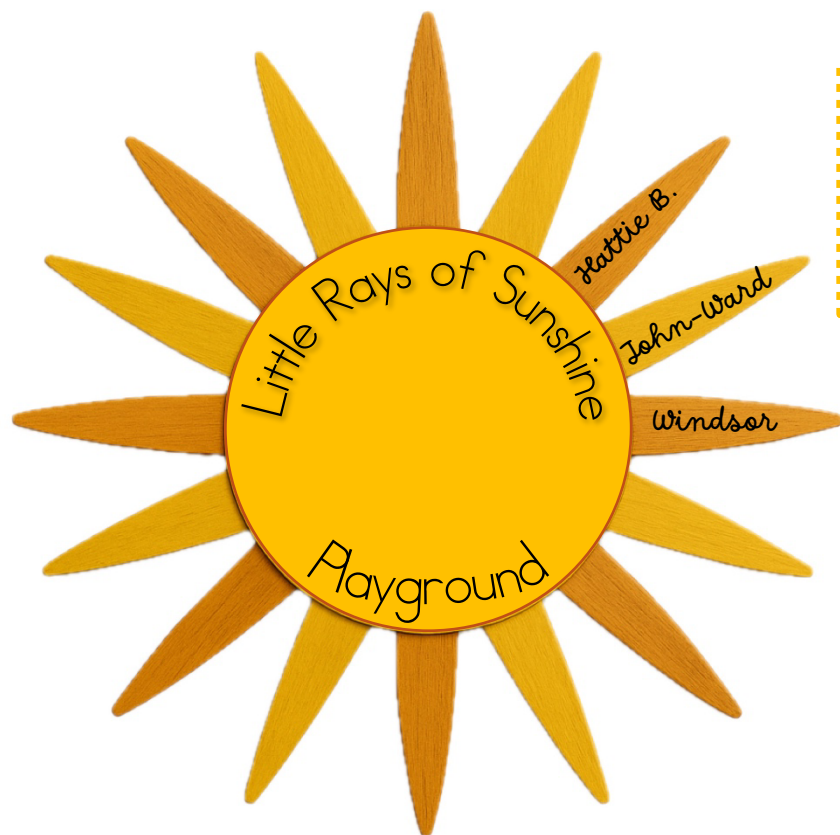
To make a donation, please complete this paper form, or scan to complete this digital one:

Name of Donor: _____

Donation Amount: _____

How would you like your child's name or family's name listed on our sign?

Eg: Windsor, John-Ward, and Hattie B. Farrior, or The Farrior Family



Donor Board
Displayed on
Playground



Candy Land
Playset
Kaplan Learning Co.

