

Locally Raised Beef

Special Orders:	Per Lb.
Front Quarter 180-220 Lb.	\$ 3.49
Hind Quarter 160-180 Lb.	\$ 3.69
Half Beef 350-400 Lb.	\$ 3.29

LAMB

	Per Lb.
Leg of Lamb (App. 10-12 lb.)	\$ 7.29
Lamb Rack (1 lb.) <i>Frozen</i>	\$16.99
Lamb Chops (app. 4 lb.) <i>Frozen</i>	\$16.99
Whole Lamb* 35-40 Lb.	\$ 7.99

*2-3 Weeks Lead Time Required

SEAFOOD

Walleye 8oz. Filet Skin-On	\$14.89
Perch 2oz. Filet Skin-On	\$14.99
Haddock 10oz. Filet Skin-Less	\$ 7.89
Wild Caught Cod 10 Oz. Filet Skin-Less	\$11.99
Argentine Red Shrimp 2 Lb. Pkg.	\$24.99
Salmon 6 Oz.	\$14.89

FOR THE DOG

Beef Dog Food	\$ 2.49
Beef Dog Bones	\$ 2.49

Weekly Frozen Family Packs

Starting at 15% Off

Large & Custom Orders Welcome!



NORMAN SCHLABACH, MANAGER

330.771.7168

ACCEPTED FORMS OF PAYMENT:



Cash, & Check with ID



BUTCHER SHOPPE
330.575.2441

Custom Cut & Wrapping Included

Open Thursday - Saturday:

Located in:

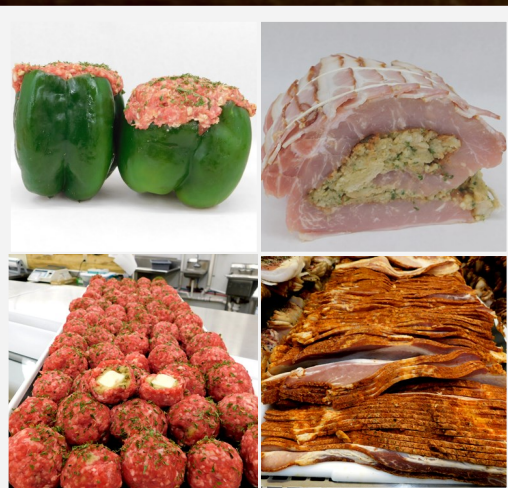
The Amish Market

Thursday & Friday: 9:00 am—6:00 pm

Saturday: 8:00 am—4:00 pm



6121 South Ave. | Boardman, OH 44512 | 330.248.9933 | theamishmarket.net



HOUSE SPECIALTIES

	Per Lb.
Stuffed Peppers (App. 1 lb. Ea.)	\$ 4.99
Jakes Meatloaf (App. 2 lb.)	\$ 5.29
Ham Loaf (2 lb.)	\$ 3.99
Meatballs (App. 10-12)	\$ 4.99
Meatball Melter's	\$ 6.99
Bomb Burger	\$ 5.99
Meat Loaf Sauce (8 Oz.)	\$ 1.50
Homemade Stuffing	\$ 4.99
JAKESTEAK® Marinade & Rub	\$ 9.89

Prices Subject to Change Without Notice

Beef

Per Lb.

STEAKS

Rib Eye	\$17.99
Sirloin	\$11.29
T-Bone - Porterhouse	\$14.59
New York Strip	\$16.99
Top Round Steak	\$ 6.49
Beef Top Round London Broil	\$ 7.99
Prime Rib Roast	\$15.49
Whole Tenderloin Filet Mignon	\$24.99
Whole Tenderloin	\$18.99

TIPS | STEW | ROASTS

Beef Round Lean Stew Meat	\$ 8.49
Beef Eye of Round Cube Steak	\$ 6.79
Sirloin Tip Roast (App. 3 Lb.)	\$ 8.59
Rolled Rump Roast (App. 3 Lb.)	\$ 7.99
Chuck Roast (App. 3 1/2 Lb.)	\$ 7.99
Eye of Round (App. 5 - 6 Lbs. ea.)	\$ 6.99
Brisket	\$ 6.59
Brisket (Cut)	\$ 7.29
Steak Tips	\$ 8.99

GROUND

Round	\$ 6.59
Chuck	\$ 5.49
Beef	\$ 4.99
Beef Patties (1/4 lb. Patties)	\$ 4.99

BURGERS

Angus Burgers (1/3lb.)	\$ 6.99
Steak Burgers (1/3lb.)	\$ 5.99
Bacon Cheddar (1/3lb.)	\$ 6.99
Bomb Burger	\$ 5.99
Beef Shank	\$ 3.99

Pork

BACON

Per Lb.

Applewood (App. 12 Slices)	\$ 8.99
Beef (App. 13 slices)	\$ 7.99
Canadian (App. 10 slices)	\$ 7.99
Cajun	\$ 7.99
Cherrywood (App. 12 Slices)	\$ 7.59
Ends & Pieces (1 tray App. 1 Lb.)	\$ 4.29
Ground	\$ 6.29
Hatfield	\$ 5.99
Hickory Smoked Cajun	\$ 6.99
Jowl	\$ 2.99
Rind on Smoked	\$ 5.99
Rind on Smoked (Sliced)	\$ 6.99
Smoked Slab	\$ 5.99
Smoked Sliced (App. 14 slices)	\$ 5.99
Smoked Sliced Peppered (App. 14 slices)	\$ 6.99
Peppered Turkey	\$ 6.49
Turkey	\$ 6.39

HAM

Smoked Ham Shanks	\$ 3.79
Smoked Ham Hocks	\$ 3.19
Old Fashioned Bone-in Ham (12-14 Lb.)	\$ 4.89
Old Fashioned Boneless Ham (7-9 Lb.)	\$ 5.99
Scrapple (1 chunk App. 1 lb.)	\$ 3.59
Frozen Pig feet	\$ 3.59

KIELBASA

Smoked Kielbasa (App. 2 sticks per Lb.)	\$ 4.99
Fresh Garlic Kielbasa (App. 4 in a Lb.)	\$ 5.29

GRILLERS'

Sausage with Cheddar Grillers (4 in a Lb.)	\$ 5.29
Sweet Italian Grillers (App. 4 in a Lb.)	\$ 5.29
Hot Italian Grillers (App. 4 in a Lb.)	\$ 5.29

GRILLERS'

Per Lb.

Apple Maple Grillers (App. 4 in a Lb.)	\$ 5.29
Pepper & Onion Grillers (App. 4 in a Lb.)	\$ 5.29
Reg Sausage Grillers	\$ 5.29

LINKS

Apple-Maple Little Links (App. 14)	\$ 5.59
Little Links Sausage (App. 14)	\$ 5.59

SAUSAGE

Country Sausage Bulk	\$ 2.99
Spicy Country Sausage Bulk	\$ 2.99
Ground Pork	\$ 3.29

ROASTS | RIBS

Bone-In Pork Roast (App. 4 1/2 - 5 1/2 Lb.)	\$ 2.59
Stuffed Pork Roast (App. 4 - 4 1/2 Lb.)	\$ 5.99
Baby Back Ribs (App. 3 Lb.)	\$ 5.29
Country Style Ribs (App. 2 per Lb.)	\$ 4.29
Pork Butt	\$ 3.79

CHOPS | LOIN | STEAKS

Hatfield Premium Porkchops (infused with pork fat)	\$ 6.99
Stuffed Porkchops (App. 1 lb. Ea.)	\$ 4.89
Bone-In Pork Chops (App. 2-3 in a Lb.)	\$ 4.79
Thick Cut Pork Chops (App. 2 in a Lb.)	\$ 4.79
Smoked Pork Chops (App. 2-3 in a Lb.)	\$ 5.99
Pork Steaks (App. 2-3)	\$ 4.29
Boneless Pork Loin (App. 7 Lb.)	\$ 4.49
Pork Tenderloin	\$ 5.99

330.575.2441

Prices Subject to Change Without Notice