

BUTLER COUNTY CHILDREN'S CENTER

dba



*SERVING ARMSTRONG, BEAVER, BUTLER, INDIANA, &
LAWRENCE COUNTIES*

ANNUAL REPORT

2024

139 RIEGER RD • BUTLER, PA 16001

724-287-2761

www.earlylearningconnections.org

TABLE OF CONTENTS

<u>SUBJECT</u>	<u>PAGE</u>
Forward	5-10
Mission, Vision, and Values	11
Description of the Organization	12
Funding and Budget Information	13-14
Human Resources	15
Butler County Program Enrollment	16-17
Armstrong County Program Enrollment	18-19
School Readiness/Child Outcomes	20-23

TABLE OF CONTENTS

<u>SUBJECT</u>	<u>PAGE</u>
Special Services Report	24-26
Family Involvement	27-28
In-Kind	29-30
Health Services Report	31-32
Pre-K Counts	33-34
Childcare Services	35
Early Learning Resource Center (ELRC)	36-38
Child and Adult Care Food Program (CACFP)	39

FORWARD

As we reflect on the 2023-2024 program year, we are filled with immense pride and gratitude for the strength and support of our community. Early Learning Connections (ELC) began as Butler County Children's Center in 1973 and has since grown in services, enrollment, locations, and capacities. It is because of your unwavering dedication that we have been able to navigate challenges, embrace new opportunities, and achieve the milestones shared within this report. There has been significant growth in our organizational structure reflected in our HR Department, Management Team, and Educational Staff. In 2024 we completed a leadership training with our management team through Dale Carnegie. Our entire team continues to work on goals and professional development while progressing through numerous projects.

ELC continued to make progress with agency goals, including systematic changes to the fiscal and personnel processes. These streamlined approaches provide efficiency and optimize resources. ELC continued to prioritize quality services and support for staff both monetarily and through a generous benefits portfolio.

This year, our partnerships have proven to be more vital than ever. We are especially proud of our collaboration with Glade Run, where we opened two new

classrooms on their Zelienople campus, expanding access to education and services for those who need it most. Additionally, the Rapid Response Team has made remarkable strides, achieving successes in its mission and growing its impact. Not only did we implement new strategies and hire a specialist, but we also expanded our community outreach, extending our reach and enhancing the support we provide. We also celebrated the approval of our Change in Scope, a significant step forward in broadening our capabilities and deepening our impact.

ELC's achievements in 2024 set the foundation for continued growth and success. The following highlights offer further insight into the key accomplishments of our programs:

Education Programs

2024 was a very exciting year for education programs. The Head Start and Early Head Start programs were awarded a Change in Scope application that will be implemented in the 24-25 program year. This award allows a grantee to lower the amount of awarded slots and use these per slot monies to hire additional staff, change program year calendars to make all classrooms in both counties duration and support staff and families going forward. This application will allow the Head Start classrooms to max out at 15 children per classroom and still maintain the same amount of staff. This gives the children more personal experience and the

staff to be hands-on with a smaller classroom. This award also gives all programs, including HSSAP, the ability to move to a 6.5-hour day instead of a 6-hour day. This then in turn will give the yearly calendar extra in-service days for staff to complete paperwork, participate in training, complete parent conferences and plan for lessons and units in their classroom. In addition, the budget allows for a second full-time mental health professional to be hired on staff to support classrooms, an additional program manager to lower the amount of classroom caseloads and two floating assistant teachers in each county to help with staff shortages and keep classrooms open.

The education department of ELC also saw a lot of new hires and transfers within the agency as well. One key hire was a Training Manager. This position is new and works under the HR team. This position will help with onboarding new staff, completion and tracking of training for new employees and continuous monitoring throughout the year. Special Services Manager and PBIS/Kindergarten Transition Coordinator positions were also filled within the agency. It is ELC's hopes to continue to recruit and hire new staff for the classrooms, support staff and administration going forward.

Lastly, 2024 brought some new locations to better serve our families throughout the year. Oakland will have a second Head Start classroom again for the 24-25

program year, the Rowan classroom will now be located at the Glade Run campus in Zelienople along with the former Pre-K Counts room at CVE. Sugarcreek Pre-K will move to East Brady and Freeport will also host a Head Start Classroom. These moves have allowed ELC to make new community connections that will promote positive relationships and excellent programming for the families and children that we serve.

Early Learning Resource Center (ELRC) Region 3

ELRC 3 received excellent results in meeting all performance requirements with no findings during the annual performance monitoring report for fiscal year 23-24.

ELRC's subsidized Child Care Works (CCW) program had a total payout of over \$19.4 million dollars to providers. We administered the Continuous Quality Improvement Grant (CQI) and awarded over \$342,000 in grants to eligible child care providers. ELRC also distributed over \$705,000 to our providers who manage the Infant Toddler Contracted Slots (ITCS) programs in our region.

ELRC partnered with the Professional Development Organization (PDO) to provide technical assistance to childcare staff looking to attain higher educational credentialing. In addition, ELRC collaborated with the newly formed 2024 Rapid Response Team (RRT) for Region 3 to help eliminate/minimize child suspensions/expulsions from child care facilities.

Fiscal

The finance department continued to improve their education by completing virtual trainings and attending outside conferences. The department moved the MIP Accounting System to the Cloud to open new features in the system. The department bought the Fixed Asset module and in the process of setting it. The module is now part of the accounting system. Currently, the department is using a separate Fixed Asset software, the new software will allow for the information to integrate with the rest of the accounting system.

Human Resources

ELC's Human Resources team attended many events throughout 2024, including:

- Slippery Rock University Job Fair
- Indiana University of Pennsylvania Job Fair
- Butler County Community College Job Fair
- Butler High School Job Fair
- Pennsylvania Career Link Job Fair
- Veterans Job Fair
- Moraine State Park Regatta

ELC has several billboards in heavily traveled areas to aid in both enrollment and staffing recruitment efforts.

ELC has continued to offer a sign-on incentive, an affordable option for health insurance, and added an FSA to our benefit package. ELC continues to provide a generous contribution to the agency 401k plan.

Early Learning Connections remains dedicated to delivering a high-quality educational and supportive environment for the communities we serve. Our Management Team, Policy Council, and Board are fully committed to upholding ELC's mission, vision, and core values of safety, kindness, and respect. As we look to 2025, we are excited to continue serving families and children with the same passion and dedication.

With Gratitude and Continued Dedication,

Elisa Spadafera

CEO, Early Learning Connections

ORGANIZATIONAL INFORMATION

Mission

The mission of Early Learning Connections is to provide a variety of high-quality early learning programs that foster a safe and positive culture through kindness and respect to meet the comprehensive needs of families

Vision

The vision of Early Learning Connections is to be the leading provider of children's programs and quality services for families

Values

Quality...Integrity...Commitment

ORGANIZATIONAL DESCRIPTION

Early Learning Connections is a private nonprofit 501c3 that is run by a volunteer Board of Directors. Early Learning Connections was incorporated in 1973 for the purpose of providing childcare services for children in Butler County. Since 1973, Early Learning Connections has evolved into the leading childcare provider in the county and has developed additional social services to serve the needs of the community.

Programs

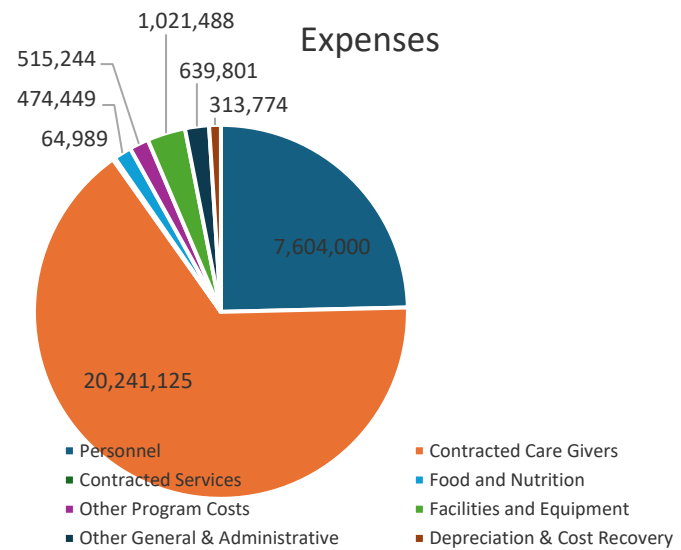
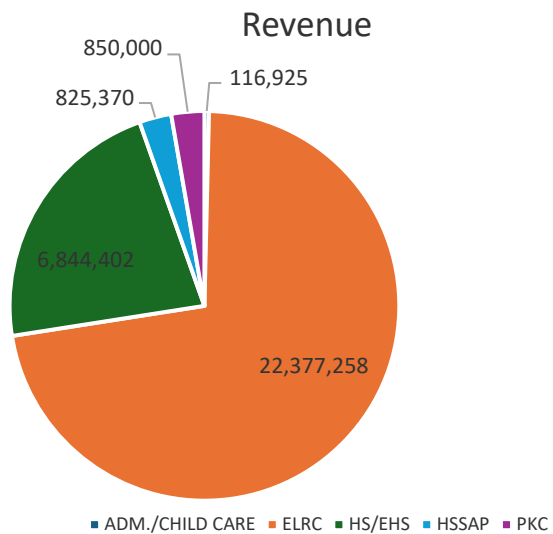
- Childcare
- Head Start
- Infant Toddler Contracted Slots (ITCS)
- Early Head Start
- Pre-K Counts
- Early Learning Resource Center (ELRC)
- Child and Adult Care Food Program (CACFP)

FUNDING AND BUDGET INFORMATION

JULY 1, 2023 – JUNE 30, 2024

Total Revenue by Source							
2023-24							
	Admin/ Child Care	ELRC	HS/EHS	HSSAP	Pre-K	Total	
Government Grants			6,411,990	825,370	850,000	8,087,360	
ELRC - Federal		14,554,539				14,554,539	
ELRC- State		7,822,719				7,822,719	
CACFP - Federal			432,412			432,412	
Fees - DHS/ELRC – State	86,912					86,912	
Other Grants - Keystone Stars - Federal						0	
Other Grants - Keystone Stars - State						0	
Other Grants - HSBG - State						0	
Other Grants - CSBG - Federal (Net)						0	
Total Government	86,912	22,377,258	6,844,402	825,370	850,000	30,983,942	
Program Fees - Private						0	
United Way (Net)/In Kind - Local	12,469					12,469	
Other - Training Revenue - PA Keys						0	
Other - Rent/Interest/Misc./Donations	17,544					17,544	
TOTAL REVENUE BY SOURCE	116,925	22,377,258	6,844,402	825,370	850,000	31,013,955	
Public	99,381	22,377,258	6,844,402	825,370	850,000	30,996,411	
Private	17,544					17,544	
TOTAL		116,925	22,377,258	6,844,402	825,370	850,000	31,013,955

	ADMIN/CC		ELRC		HS/EHS/HSSAP		Pre-K		Total	
	Dollars	%	Dollars	%	Dollars	%	Dollars	%	Dollars	%
Federal		0.0%	14,554,539	65.0%	6,844,402	89.2%			21,398,941	69.0%
State	86,912	74.3%	7,822,719	35.0%	825,370	10.8%	850,000	100.0%	9,585,001	30.9%
Private		0.0%							0	0.0%
Other	30,013	25.7%		0.0%	0	0.0%			30,013	0.1%
Total	116,925	100.0%	22,377,258	100.0%	7,669,772	100.0%	850,000	100.0%	31,013,955	100.0%



HUMAN RESOURCES

JANUARY 1, 2024 – DECEMBER 31, 2024

Number of Employees:

Full Time	137
Part Time Plus	15
Part Time	6
Substitutes	4
Total	162

Employee Departures:

Terminations	38
Total Departures	38

Employee Hires:

Full Time	42
Part Time	0
Total Hires	42

Employee Turnover Rate = 19.39%

BUTLER COUNTY HEAD START/EARLY HEAD START PROGRAM ENROLLMENT JULY 1, 2023 – JUNE 30, 2024

Families Served:

Head Start – 213

Early Head Start – 67

Program Wide – 280

Children Served:

Head Start – 239

Early Head Start – 106

Program Wide – 345



BUTLER COUNTY

Month/Year	Head Start		Early Head Start	
	Enrolled	% of Funded Enrollment	Enrolled	% of Funded Enrollment
July 2023	-	-	69	68%
August 2023	156	52%	68	67%
September 2023	190	63%	64	63%
October 2023	200	66%	64	63%
November 2023	199	66%	63	62%
December 2023	204	68%	65	64%
January 2024	207	69%	65	64%
February 2024	205	68%	64	63%
March 2024	209	69%	60	59%
April 2024	212	70%	61	60%
May 2024	212	70%	56	55%
June 2024	167	64%	56	55%

ARMSTRONG COUNTY HEAD START/EARLY HEAD START PROGRAM ENROLLMENT

JULY 1, 2023 – JUNE 30, 2024

Families Served:

Head Start – 135

Early Head Start – 35

Program Wide – 170

Children Served:

Head Start – 143

Early Head Start – 41

Program Wide – 184



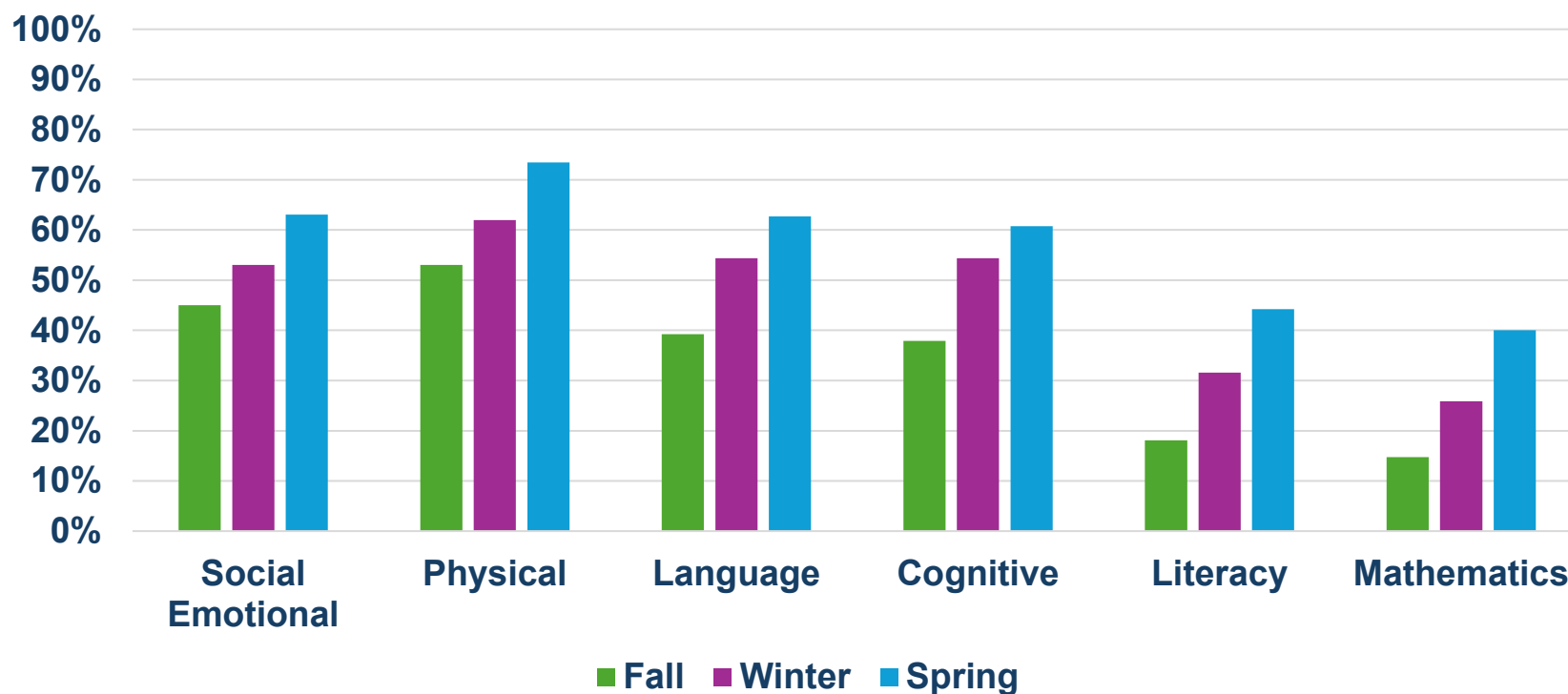
ARMSTRONG COUNTY

Month/Year	Head Start		Early Head Start	
	Enrolled	% of Funded Enrollment	Enrolled	% of Funded Enrollment
July 2023	-	-	30	83%
August 2023	99	57%	30	83%
September 2023	123	71%	32	89%
October 2023	135	78%	30	83%
November 2023	136	78%	28	77%
December 2023	136	78%	28	77%
January 2024	139	80%	27	75%
February 2024	135	78%	27	75%
March 2024	132	76%	27	75%
April 2024	129	74%	29	81%
May 2024	129	74%	30	83%
June 2024	77	68%	30	83%

SCHOOL READINESS/CHILD OUTCOMES

BUTLER COUNTY HEAD START

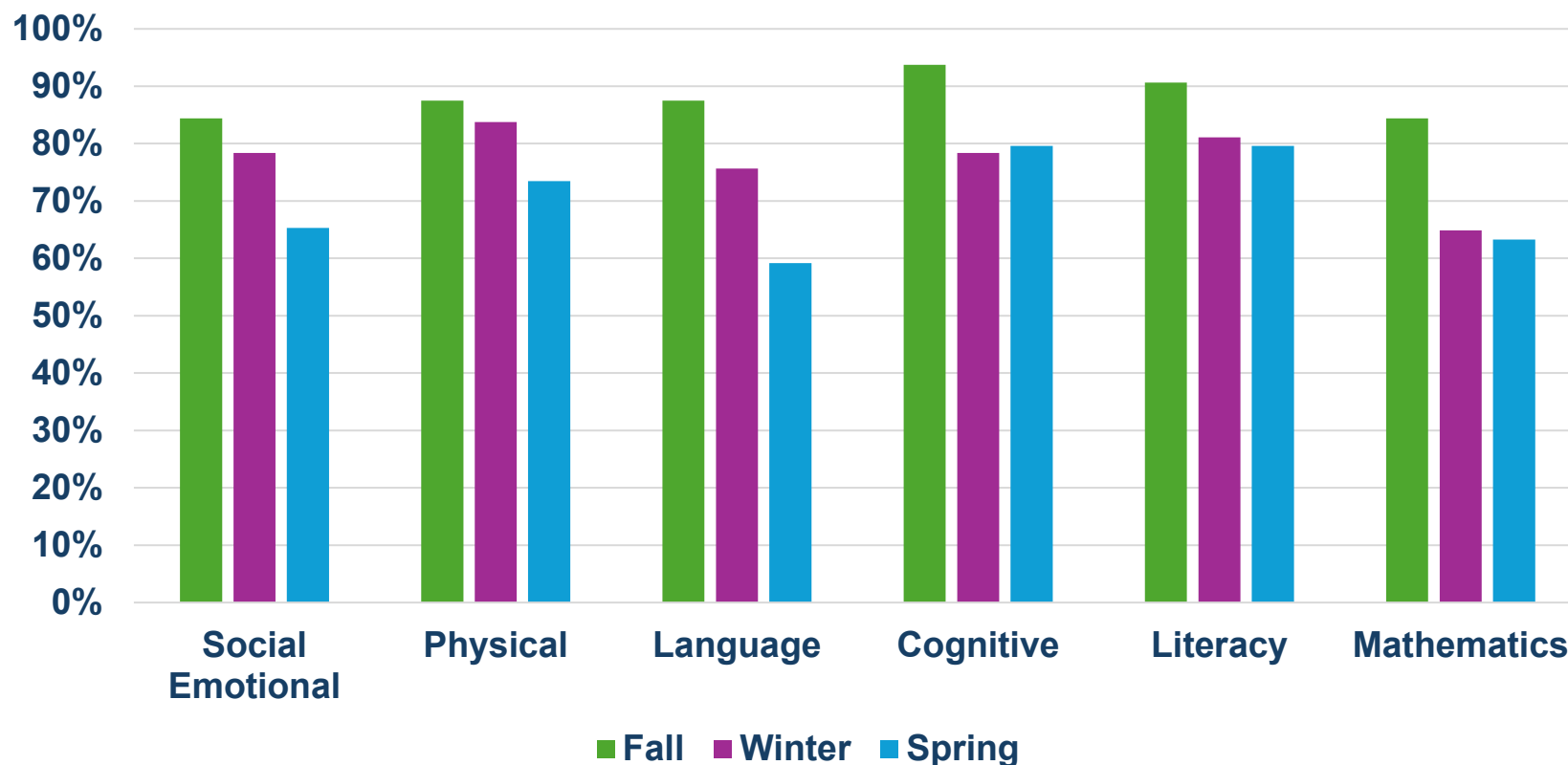
Early Learning Connections
Program Wide Overall Child Outcomes Towards
School Readiness Goals
Preschool 3 and 4 Year Olds
2023-2024 Butler County



SCHOOL READINESS/CHILD OUTCOMES

BUTLER COUNTY EARLY HEAD START

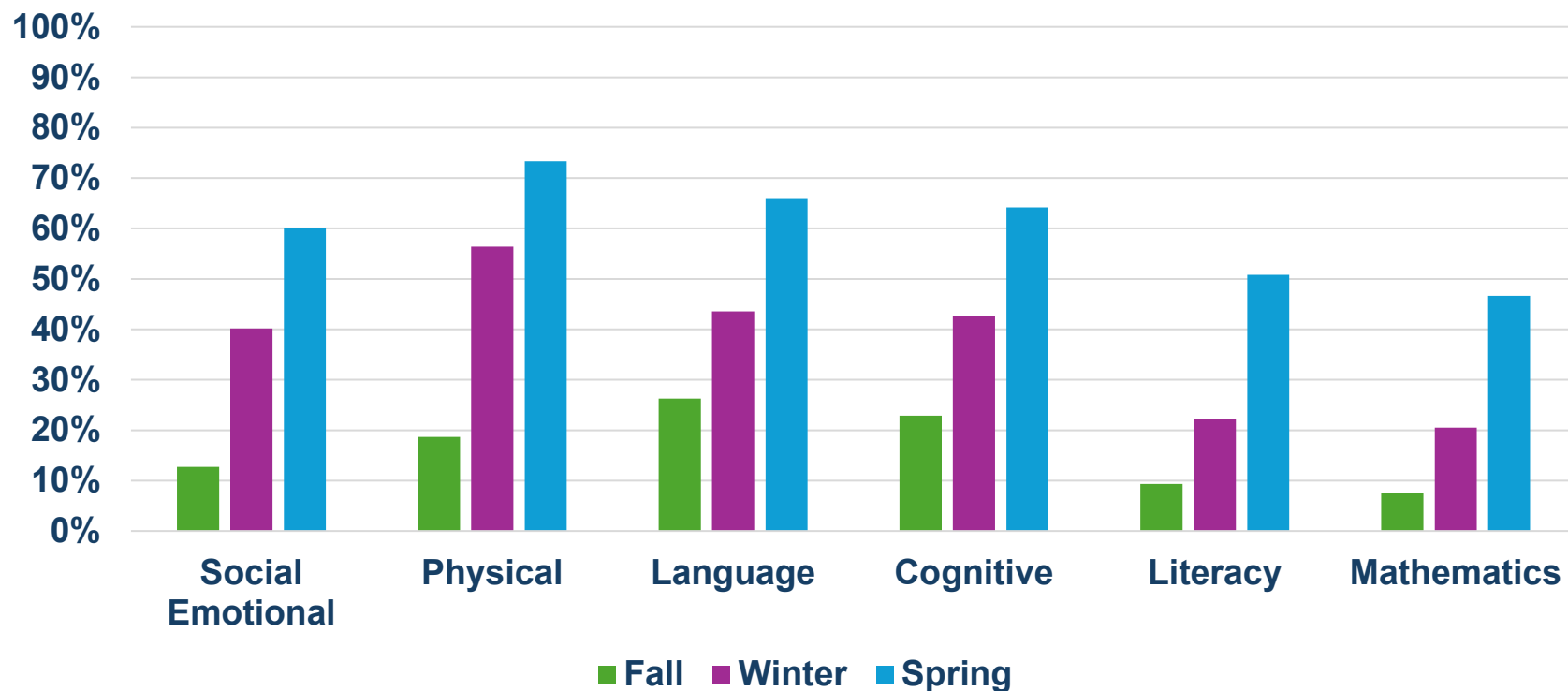
Early Learning Connections
Early Head Start
Widely Held Expectations
2023-2024 Butler County



SCHOOL READINESS/CHILD OUTCOMES

ARMSTRONG COUNTY HEAD START

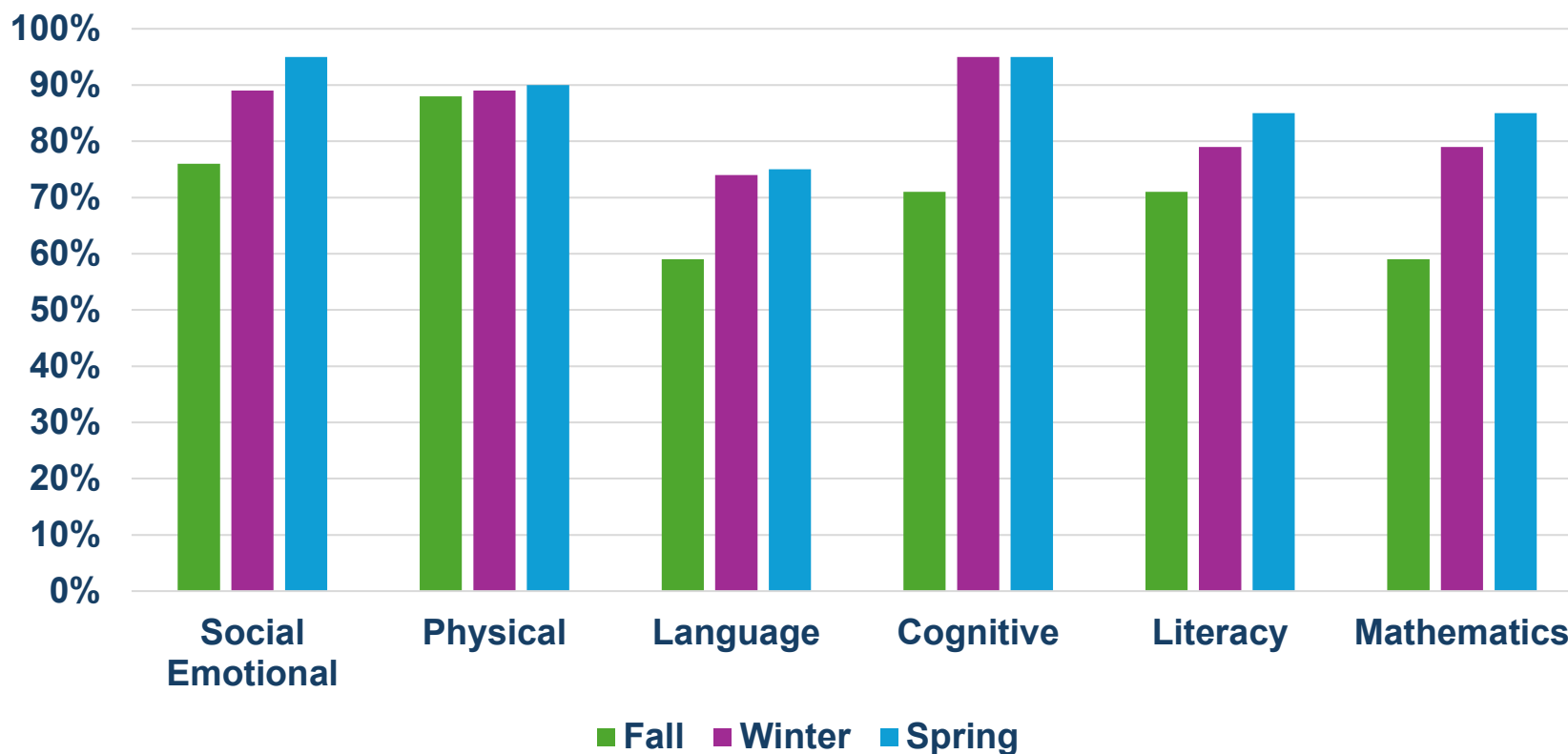
Early Learning Connections
Program Wide Overall Child Outcomes Towards
School Readiness Goals
Preschool 3 and 4 Year Olds
2023-2024 Armstrong County



SCHOOL READINESS/CHILD OUTCOMES

ARMSTRONG COUNTY EARLY HEAD START

Early Learning Connections
Early Head Start
Widely Held Expectations
2023-2024 Armstrong County



SPECIAL SERVICES REPORT 2023-2024 PROGRAM YEAR

Butler Head Start Preschool Disabilities Services

57 children enrolled in the program had an Individualized Education Program (IEP) during the enrollment year and were eligible to receive special education and related services provided by the Local Education Agency (LEA). Of the 57 children identified, 24 were determined to be eligible to receive special education and related services prior to the start of the program year and 33 were found to be eligible during the program year.

Early Head Start Infant and Toddler Part C Early Intervention Services

19 children who participated in the EHS program had an Individualized Family Service Plan (IFSP) during the enrollment year, indicating they were eligible by the Part C Agency to receive early intervention services under the Individuals with Disabilities Education Improvement Act (IDEIA). Of the 19 children identified, 13 were determined eligible to receive early intervention services prior to the program year and 6 were found eligible during the program year.

Head Start Mental Health Consultation

The Mental Health Consultants provided consultation and/or referral services to 75 families during the program year and 14 were referred to outside services.

Pre-K Counts Disabilities Services

21 children enrolled in the program had an active Individualized Education Program (IEP) during the enrollment year and received special education and related services from the Local Education Agency (LEA). 5 of the children were determined eligible to receive special education services prior to the start of the program year and 16 were found to be eligible during the program year.

Childcare Disabilities Services

0 child enrolled in the Infant/Toddler Childcare Program had an Individualized Family Service Plan (IFSP) during the enrollment year and received all services on site in the childcare environment. 1 child enrolled in the Preschool Childcare Program had and IEP during the enrollment year.

Referrals Head Start, Pre-K Counts, and Pre-K Childcare for Further Assessment

A total of 56 children were referred to the Midwestern Intermediate Unit IV for further assessment based on their Developmental Screening Results.

Armstrong Head Start Preschool Disabilities Services

31 children enrolled in the program had an Individualized Education Program (IEP) during the enrollment year and were eligible to receive special education and related services provided by the Local Education Agency (LEA). Of the 31 children identified, 11 were determined to be eligible to receive special education and related services prior to the start of the program year and 20 were found to be eligible during the program year.

Early Head Start Infant and Toddler Part C Early Intervention Services

7 children who participated in the EHS program had an Individualized Family Service Plan (IFSP) during the enrollment year, indicating they were eligible by the Part C Agency to receive early intervention services under the Individuals with Disabilities Education Improvement Act (IDEIA). Of the 7 children identified, 3 were determined eligible to receive early intervention services prior to the program year and 4 were found eligible during the program year.

Head Start Mental Health Consultation

The Mental Health Consultant provided consultation and/or referral services to 75 families during the program year; 14 were referred for outside services.

Referrals Head Start for Further Assessment

20 children were referred to the ARIN Intermediate Unit 28 for further assessment based on the Developmental Screening Results

FAMILY INVOLVEMENT

Head Start recognizes the importance of supporting parents' efforts to be their child's first and most important teacher. Early Learning Connections' approach to family involvement includes providing opportunities for parents to plan and carry out activities and events:

- To connect with peers as Head Start/Early Head Start families
- To build positive parent-child relationships
- For children and the males who are involved in the children's lives

COUNTY WIDE EVENTS

	Number of Events	Number of Children Attending	Number of Adults Attending
Armstrong SRU Events	4	61	48
Butler SRU Events	4	48	30
Armstrong In Person Family Event	4	222	186
Butler In Person Family Event	4	176	157

BUTLER COUNTY

Event	Number of Children	Number of Adults
Open House	77	87
Stay and Play	10	9
Parent Meeting	-	129
Positive Solutions for Family (Parent Curriculum)	-	1
Moving On and Moving Up	291	511

ARMSTRONG COUNTY

Event	Number of Children	Number of Adults
Open House	61	72
Stay and Play	64	64
Parent Meeting	-	75
Positive Solutions for Family (Parent Curriculum)	-	10
Moving On and Moving Up	161	357

2023 – 2024 IN-KIND CONTRIBUTIONS

BUTLER COUNTY

MONTH	HEAD START	EARLY HEAD START	Combined Total	23-24 Total
July 2023	39,252	34,198	73,450	73,450
August 2023	43,102	11,707	54,810	128,259
September 2023	84,857	62,494	147,351	275,610
October 2023	153,628	35,577	189,205	464,816
November 2023	133,173	30,587	163,760	628,576
December 2023	176,598	31,739	208,337	836,913
January 2024	93,767	31,811	125,578	962,490
February 2024	215,307	33,226	248,533	1,211,023
March 2024	157,267	41,515	198,782	1,409,805
April 2024	186,528	39,104	225,631	1,635,436
May 2024	160,498	34,762	195,259	1,830,695
June 2024	75,573	40,459	116,032	1,946,727
Total	\$1,519,549	\$427,178	\$1,946,727	

ARMSTRONG COUNTY

2023 – 2024 IN-KIND CONTRIBUTIONS

MONTH	HEAD START	EARLY HEAD START	Combined Total	23-24 Total
July 2023	35,798	7,357	43,155	43,155
August 2023	36,421	20,152	56,573	99,728
September 2023	108,295	44,583	152,879	252,607
October 2023	67,360	22,791	90,151	342,757
November 2023	148,038	31,067	179,105	521,862
December 2023	111,084	17,753	128,837	650,699
January 2024	98,160	19,432	117,591	768,291
February 2024	147,252	36,105	183,357	951,648
March 2024	147,927	37,304	185,231	1,136,879
April 2024	125,832	13,964	139,796	1,276,675
May 2024	(5,643)	28,260	22,617	1,299,292
June 2024	81,954	21,351	103,305	1,402,598
Total	\$ 1,102,478	\$ 300,119	\$ 1,402,598	

HEALTH SERVICES REPORT 2023-2024 PROGRAM YEAR

Child's Health Status – Grantee agencies must ensure that all children have:

- An ongoing source of health care
- Up to date well checkups and immunizations
- A dental exam and follow-up treatment if necessary
- A visual and auditory screening (within 45 calendar days of entry into program – this may be completed by the child's pediatrician or at the agency)

HEALTH REPORT JULY 1, 2023 – JUNE 30, 2024

HS/HSSAP/PRE-K/CC/ITCS – Total number of children served: 431

Number of children with:

- A source of ongoing health care – 414 *(17 children had a break in Medical Home due to changing providers during the program year)*
- Up to date well checkups – 414 *(10 children had overdue Well Checkups due to changing providers during the program year; 7 children had no Well Checkups documented at all)*
- Up to date immunizations – 384 *(47 overdue – 10 children had overdue Well Checkups due to changing providers during the program year, 7 children had no Well Checkups documented at all)*
- Exempt from immunizations – 12 *(parents' choice or for religious beliefs)*
- Up to date dental exam – 410 *(21 overdue or not established with Dental Home due to child's age)*
- Total number of children who have been screened or attempted to screen:

- Vision – 425 (within the first 45 days) *unable to screen children under 1 year
- Hearing – 425 (within the first 45 days) *unable to screen children with Tubes in ears

EHS – Total number of children served: 92

Number of children with:

- A source of ongoing health care – 90
 - Up to date well checkups – 71 (26 overdue) *some provides do not complete the following well checks: 15 months, 18 months, and 30 months
 - Up to date immunization – 68 (26 overdue) * some providers do not complete the following checks: 15 month, 18 months and 30 months
 - Exempt from immunizations – 3 (parents' choice or for religious beliefs)
 - Number of children who have been screened:
 - Vision – 68 (within the first 45 days) *unable to screen children under 1 year
 - Hearing – 78 (within the first 45 days) *unable to screen children with Tubes in ears
- COVID-19 continues to impact the medical field, when families attempt to establish with Primary Care Providers there is a 4-6 month waiting period for new patient appointments.
- COVID-19 and a decrease in the number of practicing Dentist has caused a 10 – 12 month waiting period for Dental Care Follow up / treatment. Fewer Dentist are accepting the Dental Insurance that our families have.
- Families continue to experience difficulties finding Dentist who will see children before the age of 5. Families across Pennsylvania have experienced this problem.
- Early Learning Connections has relied on Golden Onsite Dental to provide mobile dental clinics in both counties to help ensure our children receive Dental Exams and Cleaning.

PRE-K COUNTS

Pennsylvania Pre-K Counts is a state funded program established by the Pennsylvania Department of Education to provide a preschool education to children who are:

- Between the ages of 3 and entry age for kindergarten
- Part of families that are earning up to 300 percent of the federal income poverty level

Early Learning Connections' Pre-K program operates during the academic school year of corresponding school districts:

- Sugarcreek Elementary School (Karns City SD)
- Dassa McKinney Elementary School (Moniteau SD)
- Connoquenessing Valley Elementary School (Seneca Valley SD)
- South Buffalo Elementary School (Freeport SD)
- ELC's Bon Aire Building (Butler SD)

CLASSROOM	2023 – 2024 ENROLLMENT
Sugarcreek Elementary	15
Dassa McKinney Elementary	16
Connoquenessing Valley Elementary	16
South Buffalo Elementary School	17
Bon Aire	17
TOTAL	81

- Early Learning Connections has served over 701 Pre-K students over 14 years
- Early Learning Connections' Pre-K Counts Head and Assistant Teachers have the following credentials:
 - 4 Head Teachers hold a Pennsylvania Department of Education Level 2 Certification (1 Head Teacher is working toward their certification)
 - All Assistant Teachers have either a Bachelor (BA) or Associate (AA) degree
- Pre-K Counts teachers gather progress on each student throughout the school year:

<i>Social-Emotional</i>	<i>Mathematics</i>
<i>Physical</i>	<i>Science and Technology</i>
<i>Language</i>	<i>Social Studies</i>
<i>Cognitive</i>	<i>Arts</i>
<i>Literacy</i>	

 - Information is obtained from child observations, portfolio work, and assessments
 - Gathered information is used to plan children's individual goals
 - Parent conferences are held 4 times throughout the school year
 - Information that is gathered is documented and reported to the state
 - Each child in Pre-K Counts is given a unique identity number from the Department of Education; this number is used to follow each student's outcomes from preschool until 12th grade

CHILDCARE SERVICES

Committed to Quality

Early Learning Connections (ELC) operates a private, nonprofit licensed childcare program at the Bon Aire location. The childcare program adheres to all licensing regulations required by the state of Pennsylvania's Department of Human Services and the Office of Child Development and Early Learning. The center has a strong commitment to providing high quality childcare services to children and families. This commitment is demonstrated by ongoing participation in Pennsylvania's quality rating and improvement system, Keystone STARS. The PA Positive Behavior Support Network has given all Early Learning Connections classrooms in Butler County official recognition for implementing Program Wide Positive Behavior Support with fidelity for the 2023-24 Program Year. We are working toward recognition for all classrooms in Armstrong County for 2024-2025.

- ELC provided childcare services for 25 children ages 3-5 years old during the 2023-2024 program year
- 16 children ages 6 months-3 years old were served through the Infant Toddler Contracted Slots Program
- ELC also provided preschool childcare before and after Head Start classroom hours as well as full day childcare on school vacation and in-service days

EARLY LEARNING RESOURCE CENTER (ELRC) REGION 3

Serving Armstrong, Beaver, Butler, Indiana, and Lawrence Counties

Services for Families

ELRC's provide a single point of contact for families, early learning service providers, and communities to gain information and access services that support high-quality childcare and early learning programs.

- Services include:
 - Child Care Works (CCW), Pennsylvania's childcare subsidy program
 - Keystone STARS, Pennsylvania's quality improvement program for childcare providers
 - Infant Toddler Contracted Slots Program
 - Links and Referrals to Pre-K, Head Start, and Early Intervention Services

New ELRC 2024 – 2025 Initiatives

- Collaborate with the newly formed Rapid Response Team to help reduce suspension and expulsion of children in childcare settings
- Administer a new 2024-25 Start-Up and Expansion Grant for child care providers to increase slots and capacity in our region
- Partnering with Professional Development Organizations to continue to provide technical assistance in helping childcare workers attain higher educational levels and credentialing
- Providing additional programming to both families and providers focusing on the areas of mindfulness, behavioral health, and developmental supports

- Administering Continuous Quality Improvement Grants

ELRC PROGRAM INFORMATION AND ESTIMATED DATA

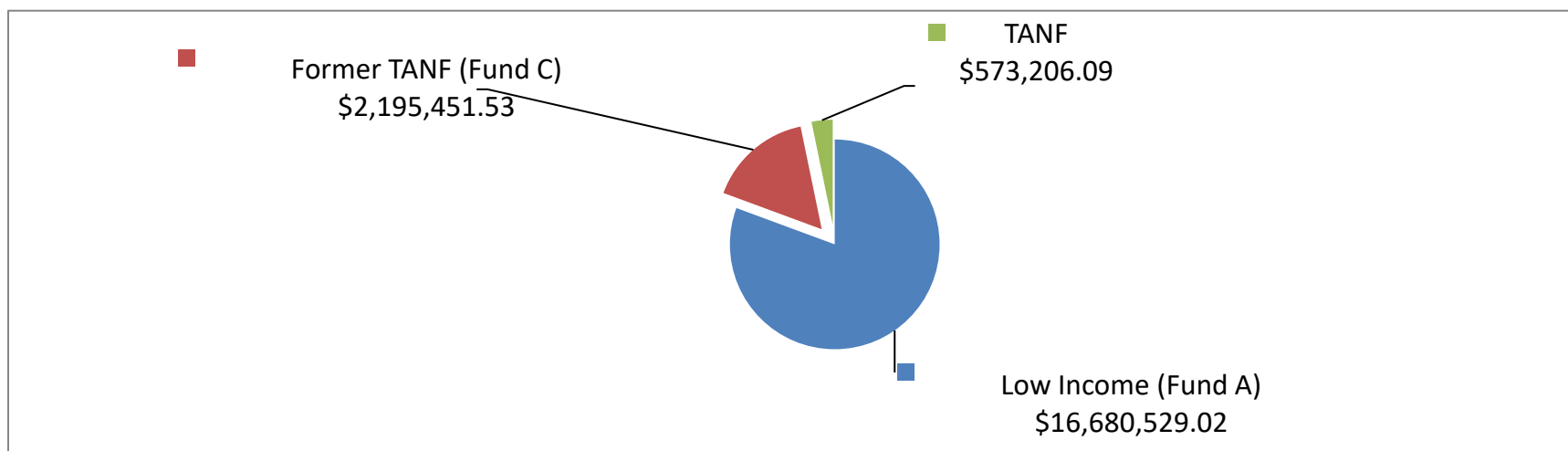
JULY 1, 2023 – JUNE 30, 2024

- **3,128 CCW estimated subsidized children enrolled 2023 -2024**
 - Help families pay for child care to maintain employment
 - Educate families on quality early education programs
 - Referral services (help find childcare and other services)
- **381 CCW estimated childcare provider sites paid in 2023 -2024**
 - 238 certified childcare providers and 134 relative providers
 - **Total subsidy payments for 2023 – 2024: \$19,449,186.00**
- **Grants and Awards 2023 – 2024**
 - ELRC 3 administered **\$356,000 in funding for Continuous Quality Grants**
 - Grants are focused on improving quality and stability of the childcare workforce
- **Infant Toddler Contracted Slots Program (ITCS)**
 - Four ITCS sites in Region 3 were awarded **\$768,000.00 during 2023 -2024**
 - ITCS continues to focus on quality programming while building strong transitions from infant-toddler to pre-kindergarten classrooms
 - ITCS serves up to **40 CCW eligible** infants and toddlers

ELRC CHILDCARE SUBSIDY PAYMENTS BY FUND TYPE

JULY 1, 2023 – JUNE 30, 2024

<u>FUNDING TYPE</u>	<u>AMOUNT PAID</u>	<u>PERCENTAGE</u>
Low Income (Fund A)	\$16,680,529.02	86%
Former TANF (Fund C)	\$2,195,451.53	11%
TANF	\$573,206.09	3%
ELRC Total	\$19,449,186.64	100%



CHILD AND ADULT CARE FOOD PROGRAM

- Early Learning Connections participates in the Child and Adult Care Food Program (CACFP)
- CACFP is administered by the United States Department of Agriculture (federal) and Pennsylvania Department of Education (state)
- The program contributes to the wellness, healthy growth, and development of children in all Early Learning Connections programs
- Early Learning Connections receives reimbursement by adhering to regulations which are set forth by the CACFP:
 - We are required to provide annual training for all current staff as well as provide training for all new staff; this is completed at newcomers and welcome back events.
 - We are required to monitor meals at all classroom sites three times per year; this is a combination of announced and unannounced visits.
 - We are required to submit a monthly claim.
 - We are required to pass an in-person evaluation every three years.