

RV Inspection Report

Prepared for: [REDACTED]
[REDACTED]

RV Location:
[REDACTED]



2020 Gulf Stream Conquest 6238

VIN: [REDACTED]

WE RV SERVICES, LLC
David Patty
256-605-0706
david@wervservices.com

Summary of Issues Found: pages 2-13

Roof Exterior

Rear Cap, Joints and Seals



Both rear cap corners have been repaired, but the wrong kind of sealant was used. Recommend evaluation by a qualified service technician.

Chassis, Undercarriage, and Hitch

Chassis and Frame Condition



This part of the rear frame is bent. This causes no problem - it's just an indication that the rear has dragged previously.

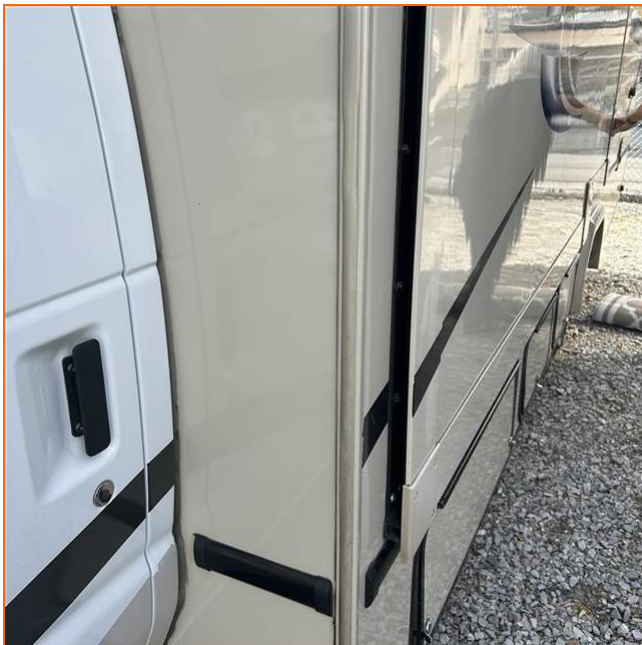
Rear Bumper Condition



One end cap is missing from the rear bumper. Recommend replacement.

Streetside Center Slideout

Slideout Operation and Alignment



The bottom of the slideout is not pulled in tight. Recommend evaluation by a qualified service technician to determine whether it needs adjusted.

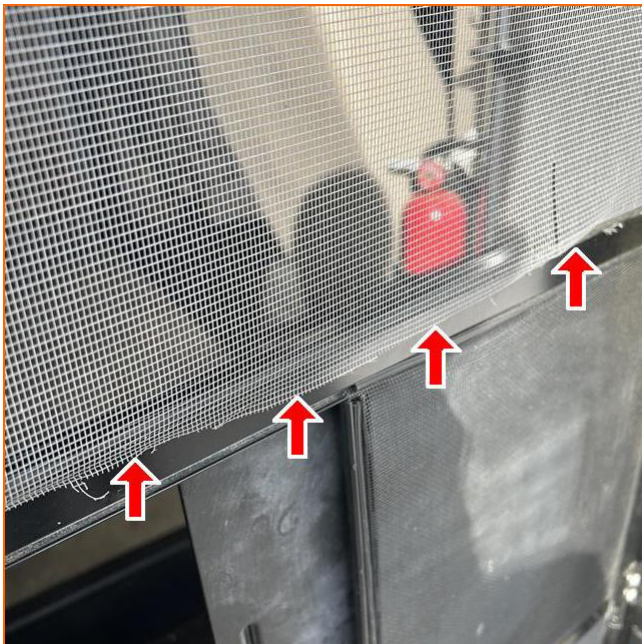
Slideout T-Molding Trim



A portion of the bulb seal is detached. Recommend repair.

Door

Screen Operation and Condition



A one-foot section of the screen is detached. Recommend reattaching the screen.

Engine, Radiator and Transmission

Engine Transmission Fluid level



The transmission fluid is at the "ADD" level. Recommend filling to appropriate level.

12-Volt DC Chassis Lights

Brake Lights



This light does not operate. Recommend repair or replacement.

Electrical System 120-Volt AC and 12-Volt DC

Generator - Oil Level

The generator oil level is low. Recommend filling to the appropriate level.

12-Volt DC Chassis Battery



The chassis battery terminals are corroded. Recommend cleaning.

12-Volt DC House (Coach) Batteries - Condition



Battery voltage was 13.6 while plugged into shore power, and was 12.5 when unplugged from shore power. There should a voltage drop when unplugged from shore power and the converter kicks in. However, a drop of this amount indicates the battery may be weakening. Recommend evaluation of the battery.

Water Systems

Outside Shower - Condition and Operation



The outside shower hose is missing.

Propane and Safety Systems

LIFE SAFETY ISSUE

Smoke Detector



The smoke detector is missing. Recommend replacement before the RV is occupied.

Dinette - Booth Seats / Chairs



Some blemishes were observed on the dinette booth seat.

Dinette - Table / Bed



Two screws are loose at the base of the table leg. Recommend tightening screws.

Refrigerator - Shelves, Racks, Trays, Drawers



The drawer and door bins are missing from the refrigerator.

Freezer - Shelves, Racks, Trays, Drawers Poor



The door bins are missing from the freezer.

Cooktop - Burner Grate/Cover Condition



The cooktop cover is missing. Recommend replacement.

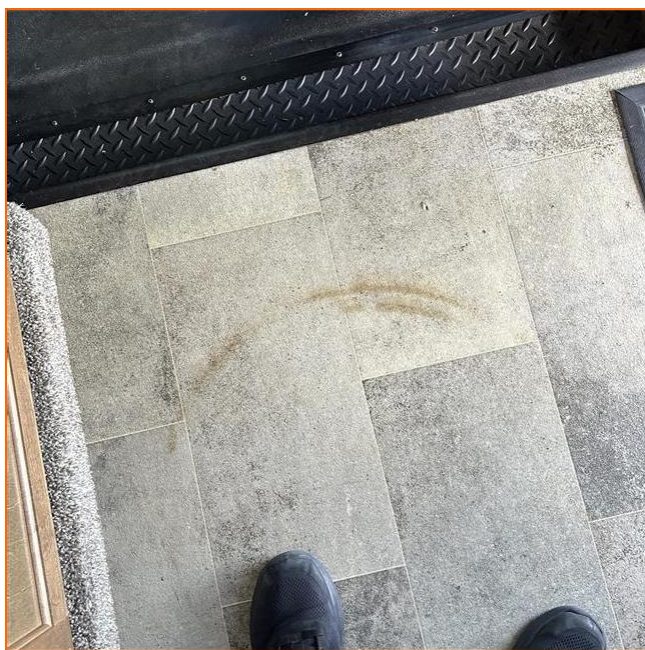
Interior Components

Ceiling



There are some blemishes on the ceiling in the bedroom area. It appears that something was removed - possibly a curtain track.

Flooring



There is a stained spot on the kitchen floor. Recommend cleaning.

Windows, Screens



This one is in the loft area

The screen at the dinette area is bent. Recommend straightening or replacement. Also, a piece of the interior window trim is detached and hanging down. Recommend repair.

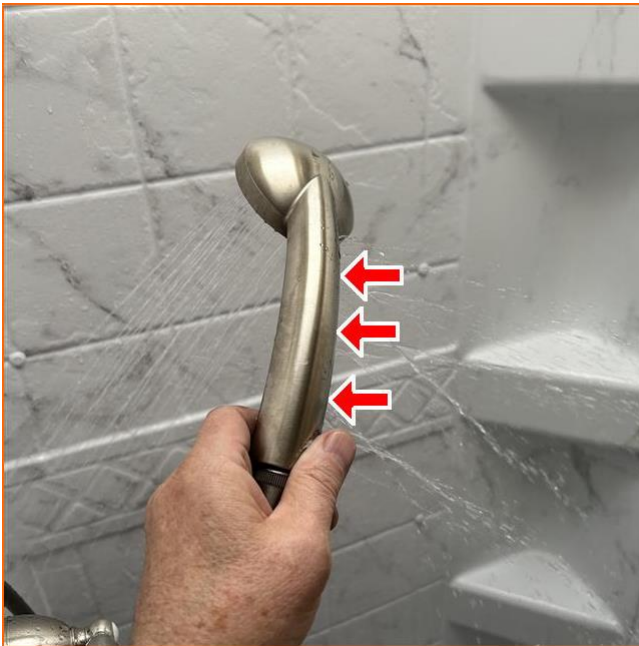
Window Blinds/Coverings



The blind in the loft area will not raise. Recommend repair.

Bathroom #1

Shower / Tub - Operation and Condition



The shower head handle is cracked and spraying water. Recommend replacement.

This time sensitive document was prepared for the client listed on the Cover Page of this report. Any reproduction, use, or resale of this document by individuals other than who is listed on the report cover page, or their assigns, is not supported by the inspector and company.

Comment Key or Definitions

The following definitions of comment descriptions represent this inspection report. All comments by the inspector should be considered before purchasing this RV home. Any recommendations by the inspector to repair suggests a second opinion or further inspection by a qualified RV technician. All costs associated with further inspection fees and repair or replacement of item, component or unit should be considered before you purchase.

Acceptable (A) = A visually observed item, component or unit and if no other comments were made then it appeared to be performing its intended function with little or no deterioration visible.

Fair (F)= The item or its components is not in need of immediate repair as it is performing its intended function but deterioration is visible. Some opinions may elect to repair or replace this item now while others may wait.

Poor (P) = The item, component or unit is not functioning as intended and replacement is recommended, or needs further evaluation by a qualified RV technician.

Not Inspected (NI)= The item, unit or component was not inspected, and no representations were made as to whether or not it was functioning as intended and a statement for the reason for not inspecting may be made.

Not Present (NP) = This item, component or unit is not in this RV.

NRVIA Standards of Practice

Purpose, Scope and General Statements

- 1 – The purpose of the Standards of Practice is to establish a uniform standard for the companies RV Inspector to inspect and report in an objective manner the conditions of a Recreational Vehicle and its components.
- 2 – The Standards describe the components, and systems included in an RV Inspection.
- 3 – The Standards apply to motorized and towable types of RVs as defined by the RV Industry.
- 4 – The Standards apply to a visual inspection of those areas, components and systems that are readily accessible to determine at the time of inspection that they are performing their intended function without regard to life expectancy.
- 5 – The purpose of the RV inspection is to identify visible and operational defects as permitted by the current conditions that in the judgment of the RV Inspector will adversely affect the function or integrity of the items, components and systems of the Recreational Vehicle.
- 6 – RV Inspections performed under the Standards of Practice are basically visual and rely upon the opinion, judgment, education and experience of the RV Inspector and are not intended to be technically exhaustive.
- 7 – RV Inspections shall be performed in a time period sufficient to allow compliance with the provisions of the NRVIA Standards of Practice.
- 8 – RV Inspections performed under the Standards shall not be construed as being a compliance inspection of any code, governmental regulation or manufacturer's installation instructions or procedures. In the event a law, statute or ordinance

prohibits a procedure recommended in the Standards, the RV Inspector is relieved of the obligation to adhere to the prohibited part of the Standards.

9 – RV Inspections performed under the Standards are not an expressed, implied warranty or guarantee of adequacy, performance or useful life of any RV, any of its components or systems.

10 – Only those items specifically listed on the RV Inspection Report will be included in the RV Inspectors evaluation.

11 – The RV Inspector shall report any system or component included in the Standards of Practice which were present at the time of the RV Inspection but were NOT inspected and provide the reason they were not inspected.

General Limitations and Exclusions

1 – RV Inspections performed under the companies Standards of Practice exclude any items concealed or not readily accessible to the RV Inspector. The RV Inspector is not required to move furniture, personal or stored items. Lifting floor covering, accessing interior walls and ceilings in which could damage or destroy the components or systems being evaluated is not part of the RV Inspection.

2 – The determination of the presence of damage caused by insects or water is only to be evaluated by observation with an opinion being rendered by RV Inspector that is to make the client aware of the issue.

3 – Excluded from the Standards of Practice is the determination of indoor air quality of the RV and it's consequence of physical damage, toxicity, odors, waste products and noxiousness.

4 – The RV Inspection and report are opinions only that are based upon the visual observation of the existing conditions of the RV at the time of the RV Inspection. The report is not intended to be or construed as a guarantee, warranty or any form of insurance. The RV Inspector will not be responsible for any repairs or replacement with regard to the RV or its contents.

5 – The RV Inspector is not required to enter any premises that visibly show a threat to the safety of the RV Inspector or others nor inspect any area or component that poses a danger to the RV Inspector or others.

6 – The NRVIA Certified RV Inspector will inspect and report on the RV items listed in this report and their condition during the RV Inspection. Any additional items of inspection will be dependent upon any agreements that are made between the client and the RV Inspector.

Type of Inspection:

Buyer: Pre-Purchase RV Inspection

Style of RV:

Class C - Gas Chassis

RV Status:

Vacant: RV Dealership

Client Is Present:

No

1. Vehicle Information

Styles & Materials

Year & Brand & Model of RV:

2020 Gulf Stream Conquest 6238

RV Date of Manufacture:

September

Year : 2020

Gross Vehicle Weight Rating (GVWR):

From Data Plate

Specify in lbs : 12500

VIN Number:

Photo Included

VIN # : [REDACTED]

Chassis Manufacturer Name:

Ford

VIN Location:

Driver's Seat Area

Door Panel

Chassis Manufacture Date:

August

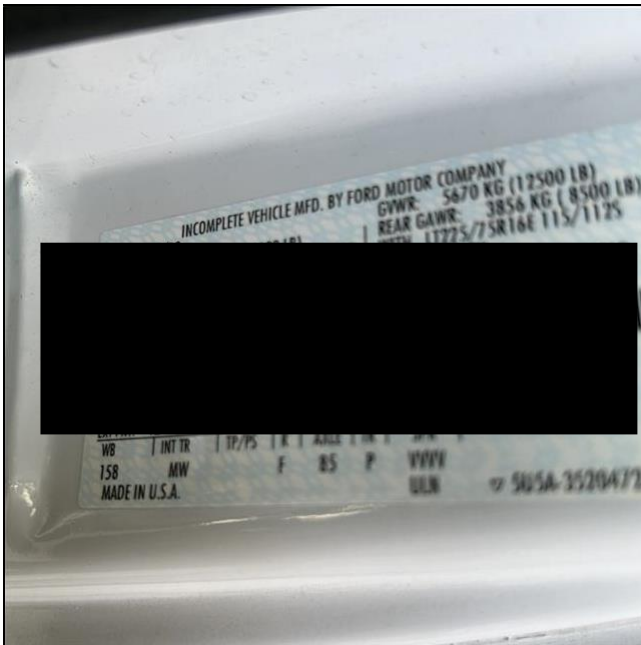
Year : 2019+

RVIA / Canadian Seal Number:

Located by Entrance Door

Seal Number / Other Info : 1779416

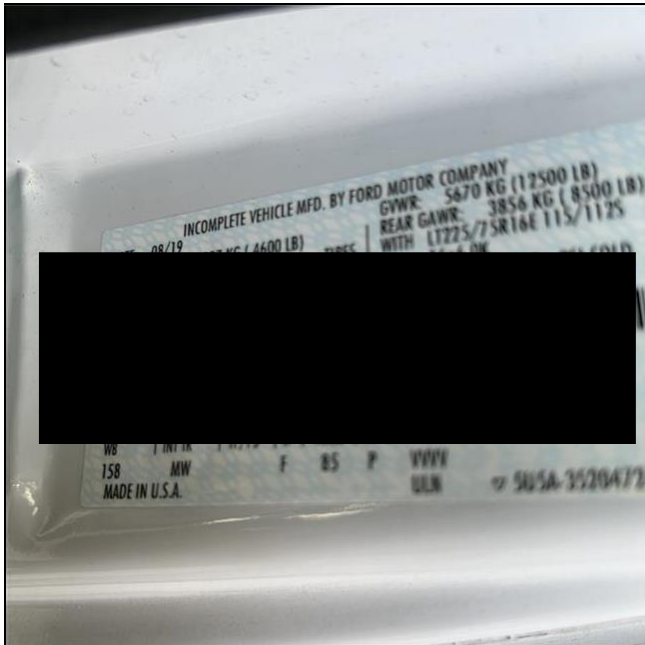
1.0 Vehicle Data



Manufacturer's VIN Data Plate Photo



RVIA Seal Photo



Incomplete Chassis VIN Data Plate Photo

RECREATIONAL VEHICLE DATA SHEET
GULF STREAM COACH, INC.
P.O. BOX 1005 • NAPPANEE, IN 46550 • (574) 773-7761

State Seal No. N/A Date of MFG 10/20/02
Unit Serial No. 53-0-C-W6238D-43076 Model 6238

EQUIPMENT LIST:		Model	Serial No.	ELECTRICAL SERVICE:	
Furnace	Suburban	SF-35	193809133	Volts	Amps
2nd Furnace	N/A	N/A	N/A	120v / 17v	30 AMP
Water Heater	Suburban	SW6DE	194012551		
Air Conditioner	Dometic	59516.751	84128161		
2nd Air Cond.	N/A	N/A	N/A		
Refrigerator	Dometic	CF-RV17	92100992	PERMISSIBLE GAS TYPE (L)	
Oven/Range	GREYSTONE	P90D23APYFR03	190603178	LP GAS	
Microwave	Greystone	4KYFA26100P	1900921		
Generator	CUMMINS		1190644944		

See Owner's Manual for all service connections and safety instructions.

Build Sheet Photo

2. Roof Exterior

Styles & Materials

Areas of Possible Water Intrusion:

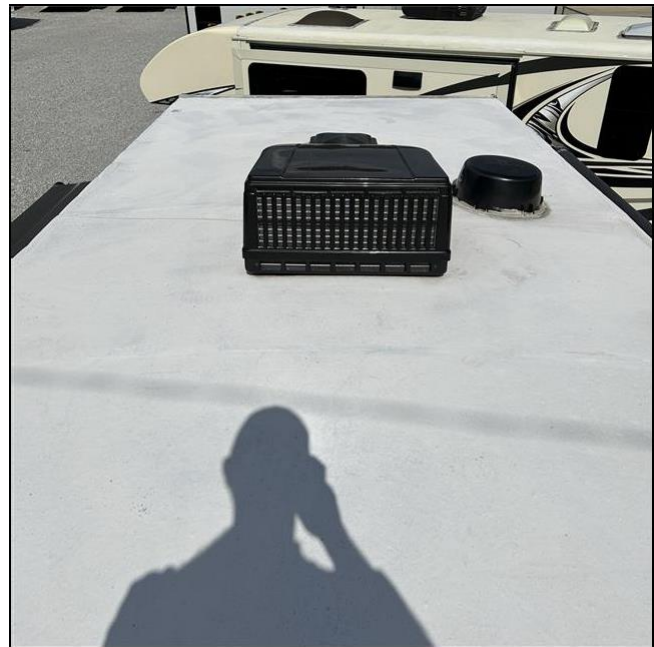
No

Number of Solar Panels:

None

2.0 General Roof Condition

Comments: Acceptable



Inspector observed a repair has been done on a small portion of the roof. It appears the repair is acceptable to prevent any water intrusion.

2.1 Front Cap, Joints and Seals

Comments: Acceptable



2.2 Trim Rail (Curbside)

Comments: Acceptable

2.3 Rear Cap, Joints and Seals

Comments: Fair



Both rear cap corners have been repaired, but the wrong kind of sealant was used. Recommend evaluation by a qualified service technician.

2.4 Trim Rail (Streetside)

Comments: Acceptable

2.5 Roof Vents and Covers (14x14)

Comments: Acceptable



2.6 Plumbing Vent Covers

Comments: Acceptable



2.7 Roof Refrigerator Vent

Comments: Acceptable



2.8 Skylights

Comments: Not Present

2.9 Air Conditioner #1 (Shroud)

Comments: Acceptable

2.10 Air Conditioner #1 (Exterior Coils)

Comments: Acceptable



2.11 TV Antenna

Comments: Acceptable



2.12 Solar Panels

Comments: Not Present

2.13 Ladder - Roof Access

Comments: Acceptable



3(A) . Front Cap / Cab

Styles & Materials

Any Damage or Discoloration or Delamination?:

No

3.0.A Condition

Comments: Acceptable



3.1.A Paint and Decals

Comments: Acceptable

3.2.A Windows

Comments: Acceptable

3.0 3.A Corner Joints, Trim,

Gutters Comments:

Acceptable

3.4.A Cargo/Access Doors

Comments: Acceptable

3.5.A Interior Compartment Condition

Comments: Acceptable

3.6.A Locks / Handles Condition and Operation

Comments: Acceptable

3(B) . Curbside (Passenger) - Sidewall

Styles & Materials

Any Damage or Discoloration or Delamination?:

No

3.0.B Condition

Comments: Acceptable





3.1.B Paint and Decals

Comments: Acceptable

3.2.B Windows

Comments: Acceptable



3.3.B Corner Joints, Trim, Gutters

Comments: Acceptable

3.4.B Cargo/Access Doors

Comments: Acceptable

3.5.B Interior Compartment Condition

Comments: Acceptable



3.6.B Locks / Handles Condition and Operation

Comments: Acceptable

3.7.B Hinges and Cylinders

Comments: Acceptable

3.8.B Compartment Lights Condition and Operation

Comments: Acceptable



3(C) . Streetside (Driver) Sidewall

Styles & Materials

Any Damage or Discoloration or Delamination?:

No

3.0.C Condition

Comments: Acceptable



3.1.C Paint and Decals

Comments: Acceptable

3.2.C Windows

Comments: Acceptable



3.3.C Corner Joints, Trim, Gutters

Comments: Acceptable

3.4.C Cargo/Access Doors

Comments: Acceptable

3.5.C Interior Compartment Condition

Comments: Acceptable



3.6.C Locks / Handles Condition and Operation

Comments: Acceptable

3.7.C Hinges and Cylinders

Comments: Acceptable

3(D) . Rear Cap

Styles & Materials

Any Damage or Discoloration or Delamination?:

No

3.0.D Condition

Comments: Acceptable



3.1.D Paint and Decals

Comments: Acceptable

3.2.D Windows

Comments: Acceptable



3.3.D Corner Joints, Trim, Gutters

Comments: Acceptable

3.4.D Cargo/Access Doors

Comments: Acceptable

4(A) . Streetside Front Tire & Wheel

NOTE: The National Transportation Safety Board (NTSB) and some tire manufacturers are recommending that all tires older than six years should be replaced, regardless of their condition.

Styles & Materials

DOT Date: Visually Verified Enter wwy : 0319	Tire Brand: Hancock	Tire Size: LT225/75R16
Load Range: E	Manufacturer's Recommended Inflation Air Pressure: 80 PSI Current Air Pressure in Tire : 70	Valve Extensions Installed?: No
Tire Pressure Monitors Installed?: No		

4.0.A Tire and Wheel general condition

Comments: Acceptable

4(B) . Streetside Drive Axle Tire & Wheel - Outside

Styles & Materials

DOT Date: Visually Verified Enter wwy : 0319	Tire Brand: Hancock	Tire Size: LT225/75R16
Load Range: E	Manufacturer's Recommended Inflation Air Pressure: 80 PSI Current Air Pressure in Tire : Unable to access valve stem	Valve Extensions Installed?: No
Tire Pressure Monitors Installed?: No		

4.0.B Tire and Wheel general condition

Comments: Acceptable

4(C) . Streetside Drive Axle Tire & Wheel - Inside

Styles & Materials

DOT Date: Unable to Visually Verify	Tire Brand: Hancock	Tire Size: LT225/75R16
Load Range: E	Manufacturer's Recommended Inflation Air Pressure: 80 PSI Current Air Pressure in Tire : Unable to access valve stem	Valve Extensions Installed?: No
Tire Pressure Monitors Installed?: No		

4.0.C Tire and Wheel general condition

Comments: Acceptable

4(D) . Curbside Front Tire & Wheel**Styles & Materials**

DOT Date: Visually Verified Enter wwy : 1519	Tire Brand: Hancock	Tire Size: LT225/75R16
Load Range: E	Manufacturer's Recommended Inflation Air Pressure: 80 PSI Current Air Pressure in Tire : 69.1	Valve Extensions Installed?: No
Tire Pressure Monitors Installed?: No		

4.0.D Tire and Wheel general condition

Comments: Acceptable

4(E) . Curbside Drive Axle Tire & Wheel - Outside**Styles & Materials**

DOT Date: Visually Verified Enter wwy : 1519	Tire Brand: Hancock	Tire Size: LT225/75R16
Load Range: E	Manufacturer's Recommended Inflation Air Pressure: 80 PSI Current Air Pressure in Tire : Unable to access valve stem	Valve Extensions Installed?: No
Tire Pressure Monitors Installed?: No		

4.0.E Tire and Wheel general condition

Comments: Acceptable

4(F) . Curbside Drive Axle Tire & Wheel - Inside**Styles & Materials**

DOT Date: Unable to Visually Verify	Tire Brand: Hancock	Tire Size: LT225/75R16
Load Range: E	Manufacturer's Recommended Inflation Air Pressure: 80 PSI Current Air Pressure in Tire : Unable to access valve stem	Valve Extensions Installed?: No
Tire Pressure Monitors Installed?: No		

4.0.F Tire and Wheel general condition

Comments: Acceptable

4(G) . Spare Tire

Styles & Materials

DOT Date: Visually Verified Enter wwy : 4921	Tire Brand: Hancock	Tire Size: LT225/75R16
Load Range: E	Manufacturer's Recommended Inflation Air Pressure: 80 PSI Current Air Pressure in Tire : 57.4	Valve Extensions Installed?: No
Tire Pressure Monitors Installed?: No		

4.0.G Tire and Wheel general condition

Comments: Acceptable

5. Chassis, Undercarriage, and Hitch

The inspector will evaluate for signs of rust but will not make a determination of the severity of the rust. Pictures may be included to show what the inspector observed at the time of the inspection.

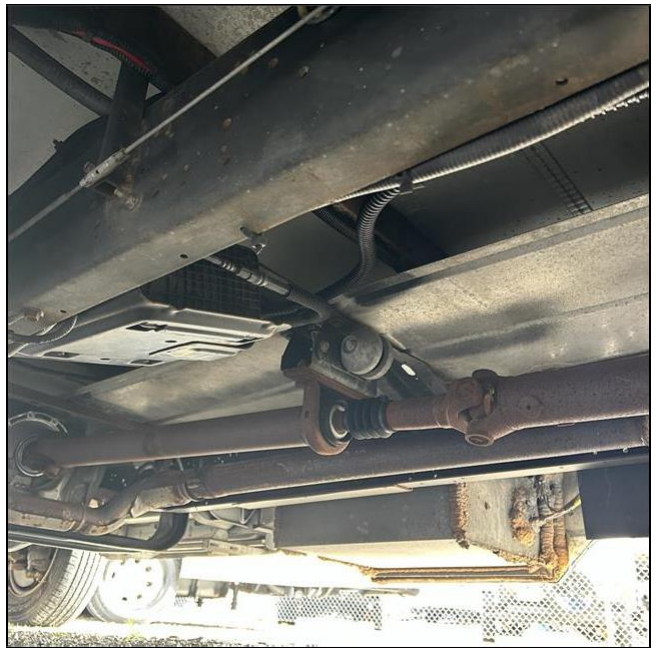
Note: Due to insurance restrictions, the motor home can NOT be driven by the inspector. Also, due to the lack of clearance under the motor home and safety concerns, the inspector will conduct the following visual inspections from the outer perimeter of the motor home.

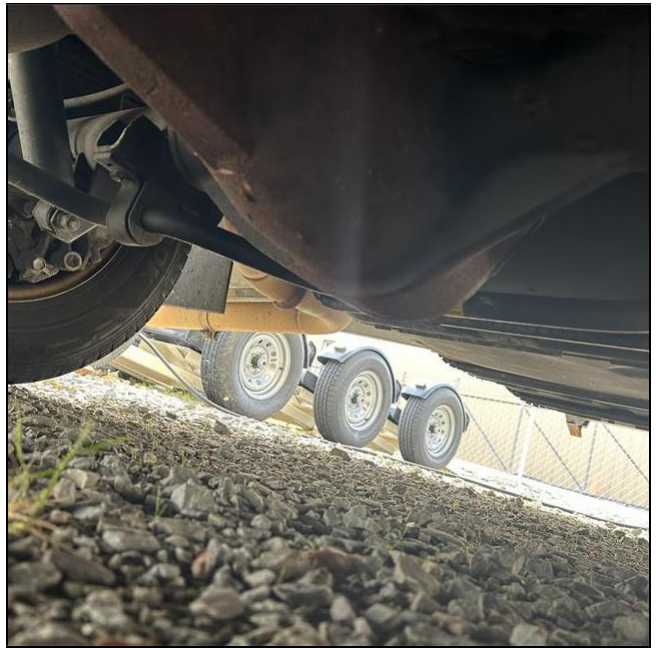
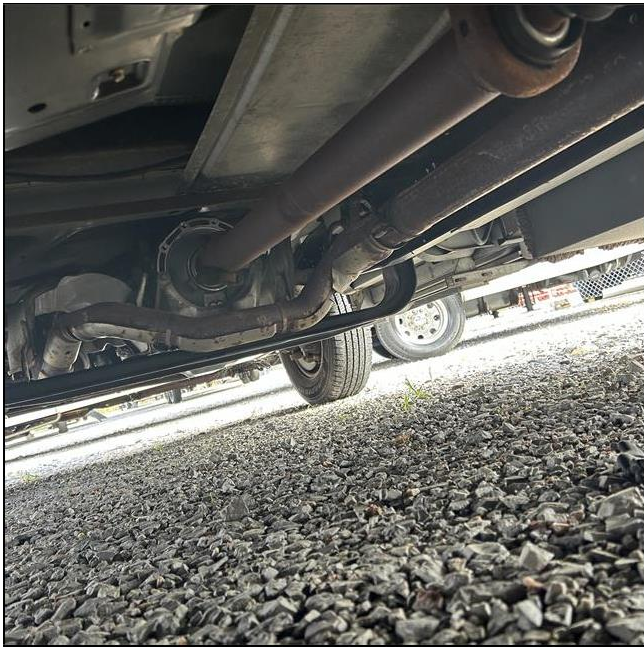
Styles & Materials

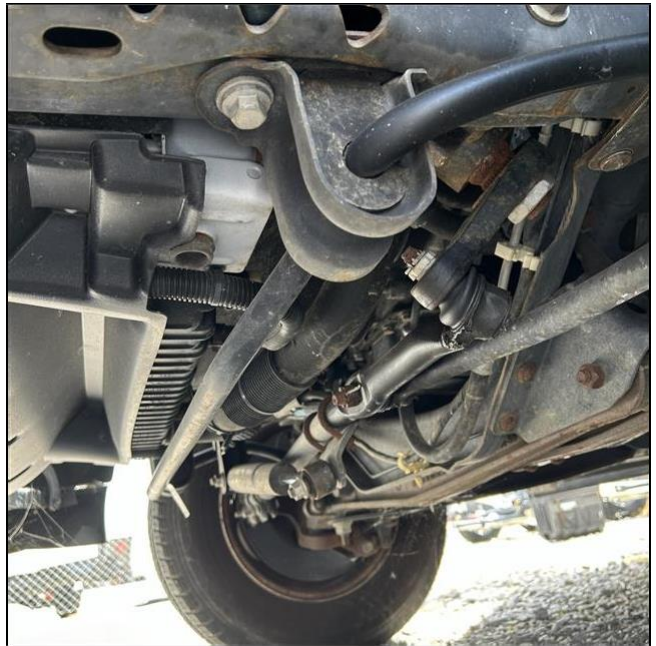
Chassis and Frame and Axle - Visible Signs of Excessive Rust?: No	Chassis and Frame and Axle - Visible Signs of Bent or Damaged Components?: No	Chassis and Frame and Axle - Visible Signs of Excess Oil Present?: No
Chassis and Frame and Axle - Visible Signs of Scraping or Drag Damage?: Yes	Chassis and Frame and Axle - Visible Signs of Hydraulic Hose Leaks?: No	Hitch Wiring Connector Type: 4 Pin 7 Pin

5.0 Chassis and Frame Condition

Comments: Acceptable



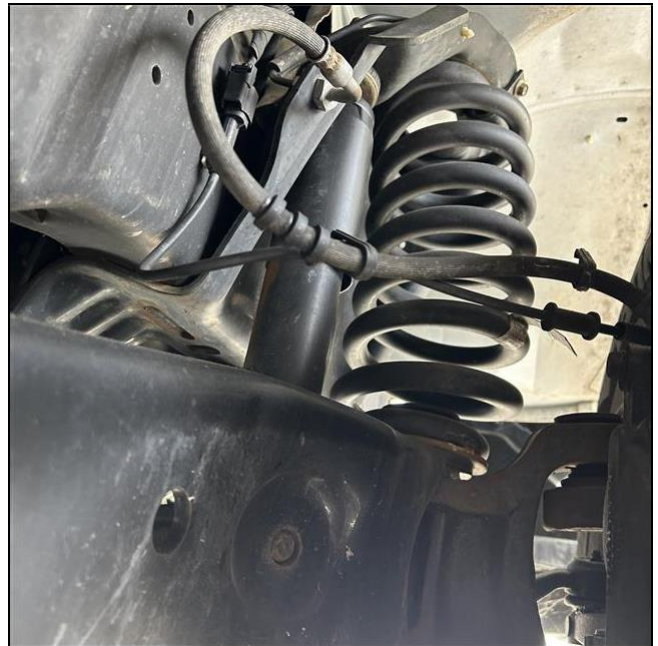






5.1 Shocks and Springs

Comments: Acceptable





5.2 Axles, Hangers, Shackles, Leaf Springs

Comments: Acceptable





5.3 Rear Bumper Condition

Comments: Fair



One end cap is missing from the rear bumper. Recommend replacement.

5.4 Hitch Receiver Condition

Comments: Acceptable



5.5 Connector(s)

Comments: Acceptable



6(B) . Streetside Center Slideout

Type of Drive:

Schwintek

6.0.B Slideout General Condition

Comments: Acceptable

6.1.B Slideout Operation and Alignment

Comments: Acceptable



The bottom of the slideout is not pulled in tight. Recommend evaluation by a qualified service technician to determine whether or not it needs adjusted.

6.2.B Slideout Roof

Comments: Acceptable



6.3.B Slideout T-Molding Trim

Comments: Fair



A portion of the bulb seal is detached. Recommend attaching.

6.4.B Seals, Sweeps and Gaskets

Comments: Acceptable

6.5.B Slideout Drive System Condition

Comments: Acceptable

6.6.B 12-Volt DC Control and Switches

Comments: Acceptable

6.7.B Slideout Topper Operation

Comments: Acceptable

6.8.B Slideout Topper Frame & Roller Tube

Comments: Acceptable

6.9.B Slideout Topper Fabric

Comments: Acceptable

7(A) . Door #1

Styles & Materials

Type of Lock:

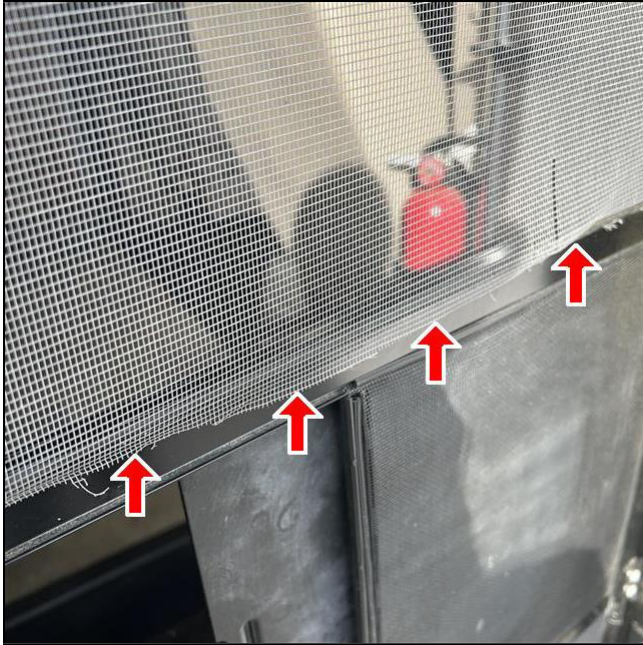
Keyed

7.0.A Door Operation and Condition

Comments: Acceptable

7.1.A Screen Operation and Condition

Comments: Fair



A one foot section of the screen is detached. Recommend reattaching the screen.

7(B) . Door #2

7.0.B Door Operation and Condition

Comments: Acceptable



7(C) . Door #3

7.0.C Door Operation and Condition

Comments: Acceptable



8(A) . Main Awning Front

Styles & Materials

Operational Type:

Electric

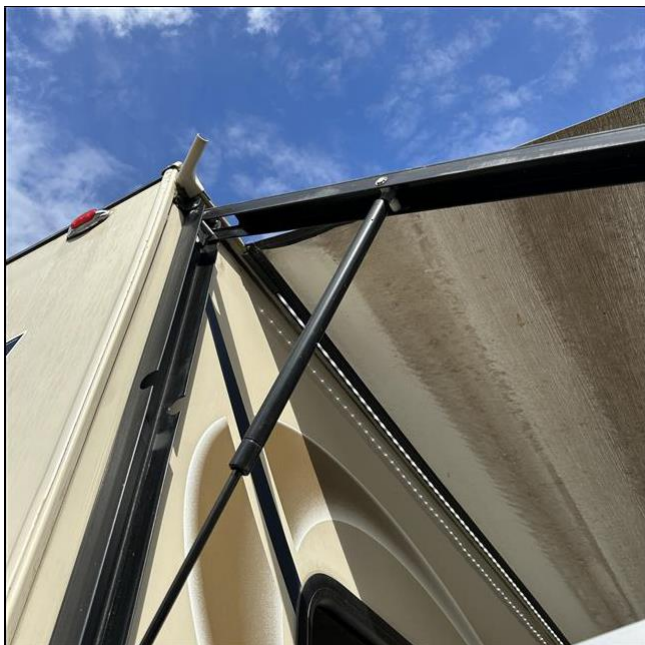
Awning Length:

16 ft

8.0.A Frame, Roller Tube, and Arm Assembly

Comments: Acceptable





8.1.A Fabric Condition

Comments: Acceptable

8.2.A Awning Operation

Comments: Acceptable

Note: Due to insurance restrictions, the motor home can NOT be driven by the inspector.

9. Engine, Radiator and Transmission

Styles & Materials

Engine Fuel Type / Location:

Rear Gas

Engine Brand:

Ford

Engine Horsepower:

HP

Horsepower : 350

Last Oil Change Recorded:

Unknown

Last Oil Filter Change Recorded:

Unknown

Last Fuel Filter Change Recorded:

Unknown

Exhaust Leaks:

No

Oil Leaks:

No

Transmission Fluid Leaks:

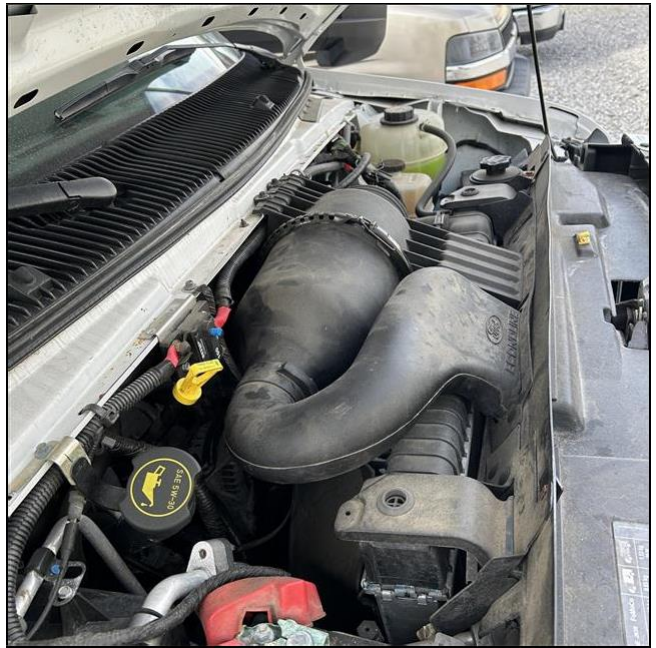
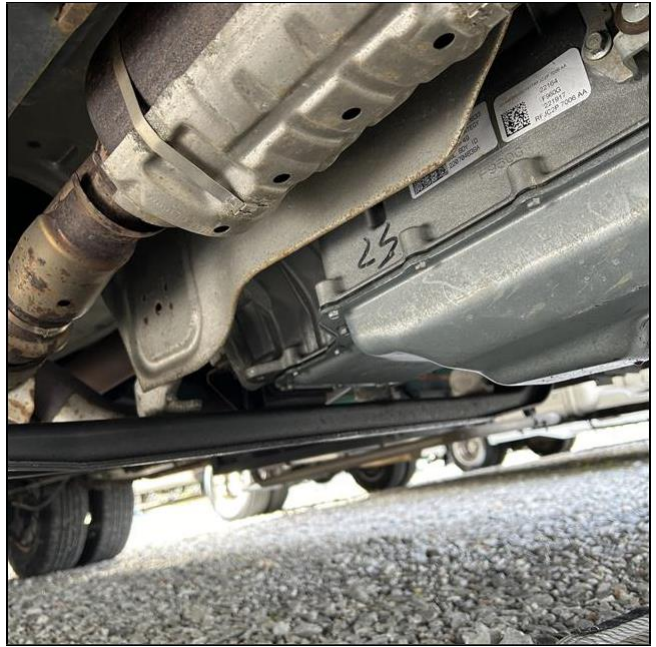
No

Transmission Oil Contaminated - Discolored:

No

9.0 Engine Running Condition

Comments: Acceptable





9.1 Engine Compartment Cleanliness

Comments: Acceptable

9.2 Engine Oil level

Comments: Acceptable

9.3 Engine Transmission Fluid level

Comments: Poor



The transmission fluid is at the "ADD" level. Recommend filling to appropriate level.

9.4 Radiator Condition

Comments: Acceptable

9.5 Coolant Reservoir Condition

Comments: Acceptable

9.6 Radiator Hoses Condition

Comments: Acceptable

10. Cockpit / Navigation Area

Styles & Materials

Engine Mileage:

Miles

Miles : 51685

Dash Air Conditioner Temperature Reading on Max:

Temp

Temperature on Max : 43.5

10.0 Windshield Condition

Comments: Acceptable



10.1 Windshield Wiper Condition and Operation

Comments: Acceptable

10.2 Mirrors Condition and Operation

Comments: Acceptable

10.3 Rear View Camera Operation

Comments: Acceptable

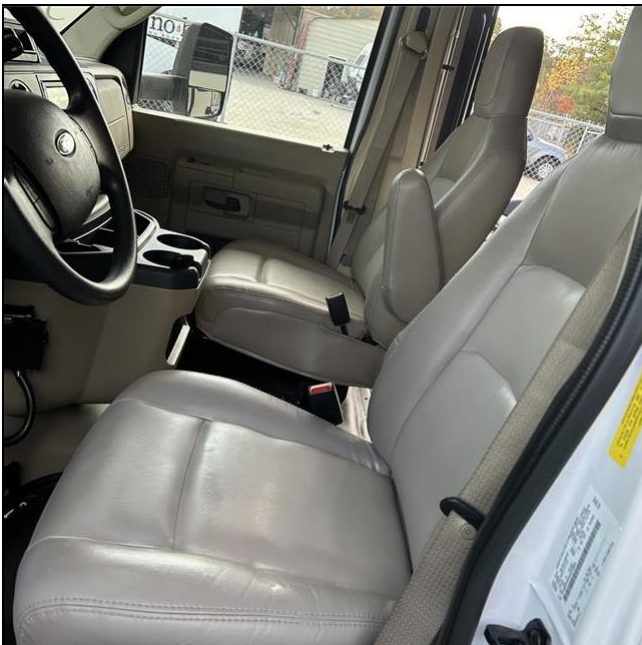


10.4 Side View Camera(s) Operation

Comments: Not Present

10.5 Seat - Condition and Operation

Comments: Acceptable



10.6 Dash Controls, Switches, Gauges

Comments: Acceptable



10.7 Dash Air Conditioner operation

Comments: Acceptable



Dash air temp 43.3

10.8 Horns - Air and Standard - Operation

Comments: Acceptable

10.9 Radio Condition and Operation

Comments: Acceptable



10.10 Steering Wheel Condition and Operation

Comments: Acceptable



10.11 Pedals Condition and Operation

Comments: Acceptable

11. 12-Volt DC Chassis Lights

11.0 Headlights

Comments: Acceptable

11.1 Fog Lights

Comments: Acceptable

11.2 Front Clearance Lights

Comments: Acceptable

11.3 Streetside - Marker Lights

Comments: Acceptable

11.4 Curbside - Marker Lights

Comments: Acceptable

11.5 Rear Clearance Lights

Comments: Acceptable

11.6 Taillights

Comments: Acceptable

11.7 Brake Lights

Comments: Fair



This light does not operate. Recommend repair or replacement.

11.8 Left Turn Signal

Comments: Acceptable

11.9 Right Turn Signal

Comments: Acceptable

11.10 Tag, License Plate Lights

Comments: Acceptable

11.11 Backup Lights

Comments: Acceptable

11.12 Flood, Utility, Security Lights

Comments: Acceptable

11.13 Hitch Lights

Comments: Not Present

11.14 Porch Lights

Comments: Acceptable

12. Electrical System 120-Volt AC and 12-Volt DC

Styles & Materials

Power Source:

30 Amp / 120 Volts AC

Generator - Brand:

Brand

Brand/Model : Cummins, Onan

Generator - Hours of Operation:

From Interior Control Panel

Hours : 705

Converter / Charger - DC Voltage w/shore power on:

Operational Test

DC Voltage with Shore Power On : 13.6

Converter / Charger - DC Voltage w/shore power off:

Operational Test

DC Voltage with Shore Power Off : 12.5

12- Volt House Batteries -

Location:

Side Basement

12.0 Hot Skin Test

Comments: Not Inspected

Inspector was unable to perform a Hot Skin Test. It requires a 110v shore power outlet, and one was not present.

12.1 Power Cord - Condition

Comments: Acceptable



12.2 Electrical Panel Box - Condition

Comments: Acceptable



12.3 Electrical Panel Box - Circuit Breakers in Place

Comments: Acceptable



12.4 Electrical Panel Box - Wiring with Signs of Discoloration from Heat

Comments: Acceptable



12.5 Electrical Panel Box - Wiring and Terminals Secure

Comments: Acceptable

12.6 Electrical Panel Box - All White, Black and Ground Wires Kept Separate

Comments: Acceptable

12.7 12 Volt DC Fuse Panel and Fuses

Comments: Acceptable

12.8 Polarity / Voltage Test - All Exterior Receptacles

Comments: Acceptable

12.9 Polarity / Voltage Test - Receptacles in Storage Bay Areas

Comments: Acceptable

12.10 Polarity / Voltage Test - Bedroom Receptacles

Comments: Acceptable

12.11 Polarity / Voltage Test - Kitchen Receptacles

Comments: Acceptable

12.12 Polarity / Voltage Test - Living Room Receptacles

Comments: Acceptable

12.13 Polarity / Voltage Test - Dining Area Receptacles

Comments: Acceptable

12.14 Polarity / Voltage Test - Bath and Toilet Area Receptacles

Comments: Acceptable

12.15 GFCI Testing, Bathroom

Comments: Acceptable

12.16 GFCI Testing, Kitchen

Comments: Acceptable

12.17 GFCI Testing, Exterior & Storage

Comments: Acceptable

12.18 USB Ports / 12-Volt Plugins

Comments: Acceptable

12.19 Monitor Panel for Battery, Tanks, Water

Comments: Acceptable



12.20 Generator - Operation and Condition

Comments: Acceptable



12.21 Generator - Fuel Level

Comments: Acceptable

12.22 Generator - Oil Level

Comments: Poor

The generator oil level is low. Recommend filling to the appropriate level.

12.23 Generator - Radiator Reservoir and Hoses

Comments: Acceptable

12.24 Generator - Transfer Switch

Comments: Acceptable

12.25 Converter / Charger Operation and Condition

Comments: Acceptable

12.26 Inverter Operation and Condition

Comments: Not Present

12.27 Solar Panels - Condition and Operation

Comments: Not Present

12.28 12-Volt DC Chassis Battery - Condition

Comments: Fair



The chassis battery terminals are corroded. Recommend cleaning.

12.29 Battery Cables and Connectors

Comments: Acceptable

12.30 12-Volt DC House (Coach) Batteries - Condition

Comments: Acceptable





Battery voltage was 13.6 while plugged into shore power, and was 12.5 when unplugged from shore power. There should a voltage drop when unplugged from shore power and the converter kicks in. However, a drop of this amount indicates the battery may be weakening. Recommend evaluation of the battery.

12.31 Batteries Box, Cables, Terminals

Comments: Acceptable

13. Water Systems

NOTE: Due to the inability to determine the age and quality of the water in the fresh water tank, the tank should be drained and sanitized before refilling for use.

NOTE: Due to the types of materials and waste used in the tanks and depending on previous maintenance, fresh and waste monitor sensor probes may perform inaccurately between applications due to build up.

Styles & Materials

City Water - Pressure Regulator Available:

Yes

13.0 Water Pump Creates and Holds Pressure

Comments: Acceptable

13.1 Wet Bay Connections

Comments: Acceptable



13.2 Outside Shower - Condition and Operation

Comments: Poor



The outside shower hose is missing.

13.3 Onboard Water Filtration System

Comments: Not Present

13.4 Fresh Water Fill

Comments: Acceptable

13.5 Black Tank Flush Labeled and Condition

Comments: Acceptable

13.6 Waste Water Sewer / Hose Fittings

Comments: Acceptable

13.7 Black Water Tank and Valve #1

Comments: Acceptable



13.8 Gray Water Tank and Valve #1

Comments: Acceptable



13.9 Drain Cap (Discharge Line)

Comments: Acceptable



14. Propane and Safety Systems

NOTE: CO Detectors have an estimated service life of 5 to 7 years after which time it is recommended they be replaced.

NOTE: LP Detectors have an estimated service life of 5 years after which time it is recommended they be replaced.

NOTE: Smoke Detectors have an estimated service life of 5 or 10 years after which time it is recommended they be replaced.

Styles & Materials

ASME Tank Size:	ASME - LP Shutoff Valve Installed:	ASME - Extend-A-Stay Valve Installed:
Tank Size in Gallons	Yes	No
Number of Gallons : 12.2		
ASME - Signs of Rust or Damage:	Smoke Detector Date:	Combination LP and Carbon Monoxide Detector Date:
No	Date on Unit	Date on Unit
	Date : Smoke Detector is Missing	Date : 2019
Fire Extinguisher - Secure in Bracket:	Fire Extinguisher - Mounted within 24 Inches of Entrance Door:	Fire Extinguisher - Gauge Indicates Charged State:
Yes	Yes	Yes

14.0 LP System Timed Drop/Leak Test

Comments: Acceptable



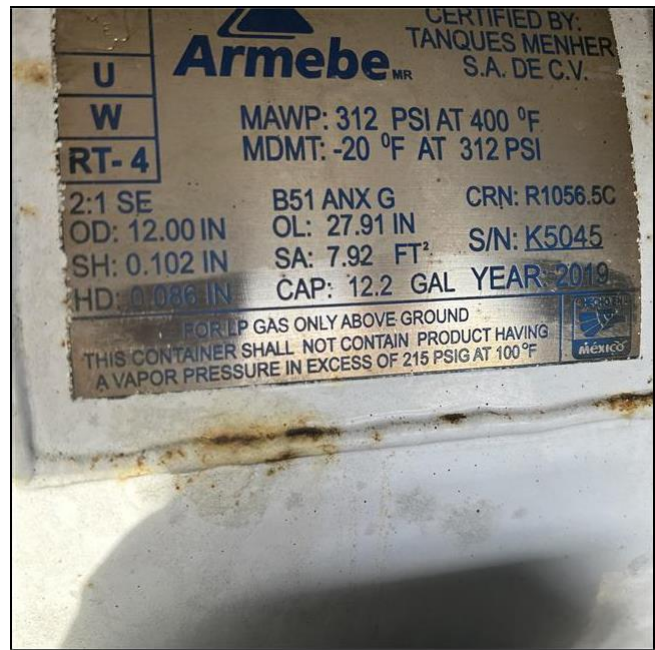
Begin Test



End test

14.1 ASME Tank

Comments: Acceptable



14.2 ASME Hoses and Regulator

Comments: Acceptable

14.3 LP Quick Connect (grill port)

Comments: Not Present

14.4 Smoke Detector Tested

Comments: Poor



The smoke detector is missing. Recommend replacement before the RV is occupied.

14.5 Combination LP & Carbon Monoxide Detector Tested

Comments: Acceptable



14.6 Fire Extinguisher

Comments: Acceptable



NOTE: CO Detectors have an estimated service life of 5 to 7 years after which time it is recommended they be replaced.

15. Kitchen

NOTE: Refrigerators need to be on for a minimum of 12 to 24 hours to be at full cooling condition. This inspection may not reveal a problem if during the inspection the refrigerator was not on for the minimum recommended time.

Styles & Materials

Kitchen Sink - Style:: Single Bowl	Refrigerator Brand: DOMETIC	Refrigerator - Has Unit been Running 12 + Hours: No
Refrigerator Type: RV Helium / Hydrogen Absorption	Refrigerator Cooling Source(s): 120 Volts AC Propane	Refrigerator - Operates on all Available Sources: Yes
Refrigerator - Door Latch Secure: Yes	Cooktop - Brand: Greystone	Cooktop - All Burners Operate: Yes
Cooktop - Burner Ignition Source: Auto Piezo Ignition - Push Button Creates a Spark	Oven - Brand: Greystone	Oven - Burner Lights: Yes
Oven - Burner Ignition Source: Auto Piezo Ignition - Push Button Creates a Spark	Microwave - Brand: Greystone	Microwave - Type: Microwave Only
Microwave - Temperature of Water after 60 Seconds: Degrees F Temp : 150	Microwave - Racks and Turntable Installed: Yes	

15.0 Kitchen Cabinets, Counters, and Pantries

Comments: Acceptable



15.1 Kitchen Sink - Operation and Condition

Comments: Acceptable



15.2 Dinette - Booth Seats / Chairs

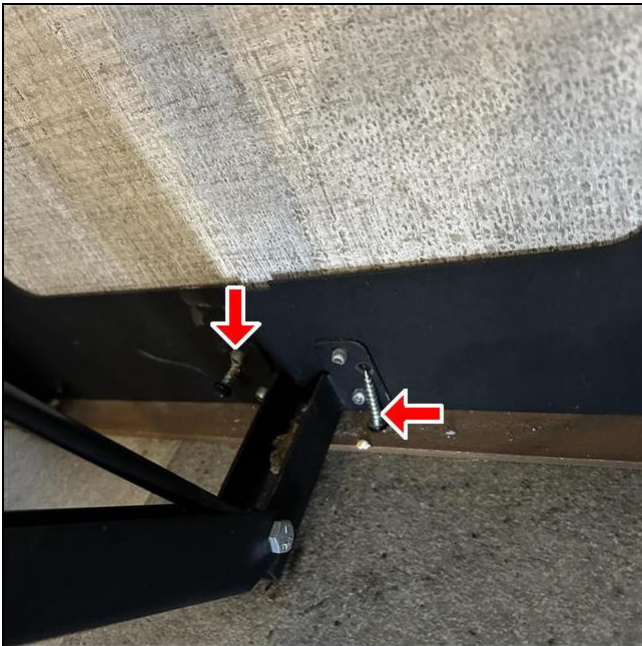
Comments: Fair



There are some blemishes on the dinette booth seat.

15.3 Dinette - Table / Bed

Comments: Fair



There are two screws are loose at the base of the table leg. Recommend tightening screws.

15.4 Refrigerator Operation and Condition

Comments: Acceptable



15.5 Refrigerator - Control Panel

Comments: Acceptable

15.6 Refrigerator - Doors, Latch, Seals, Panels

Comments: Acceptable

15.7 Refrigerator - Shelves, Racks, Trays, Drawers

Comments: Poor



The drawer and door bins are missing from the refrigerator.

15.8 Refrigerator - Backside Cooling Coils / Proper Venting

Comments: Acceptable



15.9 Freezer - Doors, Latch, Seals, Panels

Comments: Acceptable

15.10 Freezer - Shelves, Racks, Trays, Drawers

Comments: Poor



The door bins are missing from the freezer.

15.11 Freezer - Ice Maker

Comments: Not Present

15.12 Cooktop - Condition

Comments: Acceptable

15.13 Cooktop - Burner Grate/Cover Condition

Comments: Poor



The cooktop cover is missing. Recommend replacement.

15.14 Cooktop - Condition of Knobs / Controls

Comments: Acceptable

15.15 Cooktop - Color of Burner Flame is Blue

Comments: Acceptable



15.16 Cooktop Exhaust Vent, Light, Fan

Comments: Acceptable

15.17 Oven - Condition

Comments: Acceptable



15.18 Oven - Racks Condition

Comments: Acceptable

15.19 Oven - Color of Burner Flame is Blue

Comments: Acceptable



15.20 Microwave - Operation and Condition

Comments: Acceptable



15.21 Dishwasher - Condition and Operation

Comments: Acceptable

16. Other Appliances

Styles & Materials

Water Heater - Brand: Suburban	Water Heater - Type: Tank Type	Water Heater - Heat Source(s): LP and Electric
--	--	--

Water Heater - Operates on all Sources: Yes	Water Heater - Leaks at Pressure Relief Valve: No	Water Heater - Proper Drain Plug Installed: Yes
Water Heater Anode Rod Present (required Water Heater Dauber Screens on Suburban): Yes	Installed: No	Furnace - Floor Vents or Outside Exhaust Vents Blocked or Covered: No
Furnace Dauber Screens Installed: No		

16.0 Water Heater Operation and Condition

Comments: Acceptable



16.1 Water Heater - Condition of Burner Assembly Area

Comments: Acceptable



16.2 Water Heater - Rubber Grommet Around Gas Line Sealed

Comments: Acceptable

16.3 Furnace Operation and Condition

Comments: Acceptable



16.4 Furnace Air Intake / Exhaust Area Condition

Comments: Acceptable

16.5 Furnace Warm Air Discharge

Comments: Acceptable

17(A) . Center Air Conditioner

NOTE: The Delta-T average acceptable performance range is 14 to 22 degrees F (-10 to -5 degrees C). In high humidity areas the range may be lower (12 to 16 degrees F) (-11 to -9 degrees C) and in desert areas, it may be higher (23 to 26 degrees F) (-5 to -3 degrees C).

Styles & Materials

Air Conditioner - Options:

AC Only

Air Conditioner - Delta-T:

Degrees F

Delta-T : 19.6

17.0.A Air Conditioner Operation and Condition

Comments: Acceptable



Intake air temp 74.3



Output air temp 54.7

17.1.A Air Conditioner - Filter Condition

Comments: Acceptable

17.2.A Plenum - Divided and Sealed

Comments: Acceptable

18. Interior Components

18.0 Chair(s)

Comments: Not Present

18.1 Sofa(s)

Comments: Not Present

18.2 Ceiling

Comments: Fair



There are some blemishes on the ceiling in the bedroom area. It appears that something was removed - possibly a curtain track.

18.3 Ceiling Vents and Skylights

Comments: Acceptable

18.4 Ceiling Fan(s)

Comments: Acceptable

18.5 Lights and Fixtures

Comments: Acceptable

18.6 Walls

Comments: Acceptable

18.7 Interior Doors

Comments: Acceptable

18.8 Closets and Pantries

Comments: Acceptable

18.9 Flooring

Comments: Fair



There is a stained spot on the kitchen floor. Recommend cleaning.

18.10 Windows, Screens

Comments: Fair





This one is in the loft area

The screen at the dinette area is bent. Recommend straightening or replacement. Also, a piece of the interior window trim is detached and hanging down. Recommend repair.

18.11 Window Blinds/Coverings

Comments: Fair



The blind in the loft area will not raise. Recommend repair.

19. Bathroom #1

Styles & Materials

Bathroom Sink - Style::

Single Bowl

Shower Style:

Shower Stall

19.0 Bathroom Sink

Comments: Acceptable



19.1 Vents and Skylights

Comments: Acceptable

19.2 Lights and Fixtures

Comments: Acceptable

19.3 Cabinets and Counters

Comments: Acceptable



19.4 Toilet - Operation and Condition

Comments: Acceptable



19.5 Toilet Flapper Seal Holds Water

Comments: Acceptable

19.6 Shower / Tub - Operation and Condition

Comments: Fair



The shower head handle is cracked and spraying water. Recommend replacement.

19.7 Shower / Tub - Door, Frame, Seals Condition

Comments: Acceptable

20. Bedroom #1

20.0 Lights and Light Fixtures

Comments: Acceptable

20.1 Closets, Cabinets, Dressers, Drawers

Comments: Acceptable



20.2 Bed(s)

Comments: Acceptable



20.3 Storage Under Bed

Comments: Not Present

21. Loft Area

21.0 Lights and Light Fixtures

Comments: Acceptable



21.1 Closets, Cabinets, Dressers, Drawers

Comments: Acceptable





21.2 Bed(s)

Comments: Acceptable



22(A) . TV #1

Styles & Materials

Unit Brand:

Roku

Remotes Operational:

Yes

Location:

Loft Area

22.0.A Operation and Condition

Comments: Acceptable



22(C) . Radio / Stereo

22.0.C Operation and Condition

Comments: Acceptable