

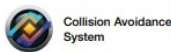


OKUMA MULTI TASKING MACHINE EX STOCK – SHARJAH- U.A.E

Intelligent Multitasking Machines

MULTUS BII series

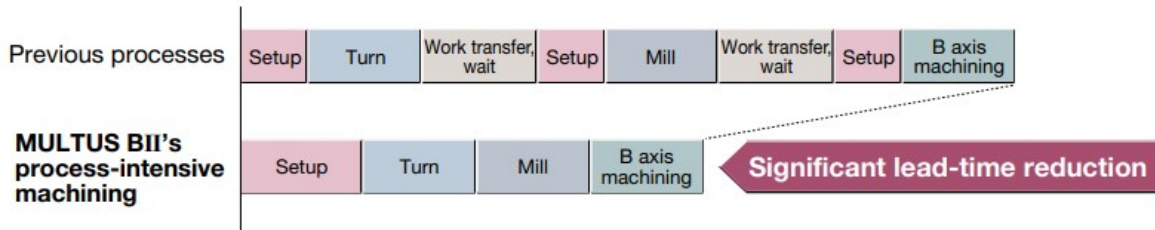
MULTUS B300II.





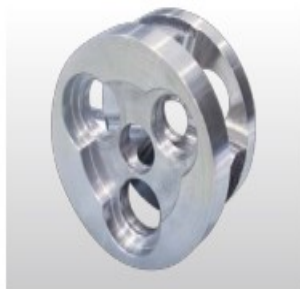
Lathe, vertical or horizontal machining center, and material handling operations consolidated into one machine...

Shorter deliveries and more effective use of floor space, plus fewer setups and operation with fewer workers, result in better process control and greatly reduced total cost.

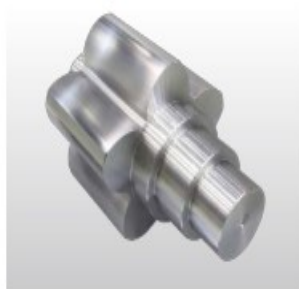


Process-intensive machining of complex shaped workpieces

Abundant lineup handles a wide range of workpieces.



Carrier



Vacuum rotor



Spiral bevel gear



Machine specifications:

Model		MULTUS B300 II	
		× 900 C-spec	
Capacity	Swing over carriage	mm	ø630 (Y=0)
	Max turning diameter	mm	ø630
	Between-center distance	mm	900
Travel	X-axis	mm	580 (+560 to -20)
	Z-axis	mm	935
	Y-axis	mm	160 (+80 to -80)
	C-axis control angle	deg	360 (Min command input: 0.001)
	B-axis indexing angle	deg	225 (-30 to 195 (Min command input: 0.001))
Main Spindle	Spindle speed	min ⁻¹	45 to 5,000 [38 to 3,800]
	No. of spindle speed ranges		2 auto ranges (motor coil switching 2 ranges)
	Spindle nose		JIS A2-6 [JIS A2-8]
	Spindle thru hole diameter/ Spindle bearing ID	mm	ø62/ø100 [ø80/ø120]
Turret	Turret type		H1-ATC
	No. of tools attachable to the turret		1 (either L or M tool)
	Turning tool shank/ Boring bar shank diameter	mm	25 × 25/ø40
M-tool Spindle	M-tool spindle speed	min ⁻¹	50 to 6,000 [10,000]
	Max M-tool spindle torque	N·m	65.7/44.8 (3 min/cont) [57.3/38.2 (5 min/cont)]
	Max M-tool spindle diameter	mm	ø70
Axis Feed System	Cutting feed command range	mm/rev	0.001 to 1,000
	Rapid traverse	m/min	X: 40 Z: 40 Y: 26
		min ⁻¹	C: 200, B: 30
Tail- stock	Center size		MT.No.5
	Tailstock travel	mm	1,000
ATC	Tool shank/pull stud type		HSK-A63 (CAPTO C6)
	Tool storage capacity	tools	20 [40, 60]
	Max tool diameter	mm	ø90 (ø130 w/o adjacent tool)
	Max tool length	mm	300 (Length from the gauge line)
	Max tool weight	kg	8
Motors	Main spindle drive	kW	VAC15/11 (20 min/cont) [22/15 (20 min/cont)]
	M-tool spindle drive	kW	PREX11/7.5 (5 min/cont) [PREX16/11 (5 min/cont)]
	Z-axis feed	KW	BL3.5
	X-axis feed	kW	BL3.5
	Y-axis feed	kW	BL2.9
	Coolant pump motor	kW	0.8
Machine Size	Machine height	mm	2,587
	Required floor space (including filter unit)	mm×mm	4,340 × 2,257
	Machine weight (including CNC unit)	kg	10,000



OPEN POSSIBILITIES

STANDARD SPECIFICATION: MULTUS B300II C

1	OKUMA Intelligent Multitasking Model MULTUS B300II C with OSP-P300SA CNC Controller (15inch OSP suite) Including CE mark	1	set
	("GENOS Package" spec.)		
1-01	CE mark and EMC	1	set
1-02	Application for IEC standard	1	set
1-03	Big bore spindle, spindle speed, 38 - 3,800 min-1, built-in integral motor spindle (coil two-shift)	1	set
1-04	Main spindle motor VAC 22/15kW (20 min./cont.)	1	set
1-05	Spindle JIS A2-8, bore dia. 80mm	1	set
1-06	C-axis control, 360 degree at 0.001 degree increment	1	set
1-07	H1 ATC turret HSK-A63	1	set
1-08	B-axis indexing, 0.001 degree indexing	1	set
1-09	Rotary tool drive motor, PREX 11/ 7.5 KW (5 min./cont.)	1	set
1-10	Rotary tool spindle speed, 50 - 6,000 min-1	1	set
1-11	M spindle through coolant supply spec.	1	set
1-12	NC Tailstock, Inching Specification (*B300II C)	1	set
1-13	NC Tailstock, dead Center Type MT No.5	1	set
1-14	Tailstock travelling stroke, 1000mm	1	set
1-15	40-tool ATC	1	set
1-16	Max tool weight: 8kg Max tool length: 300mm (from gauge line)	1	set
1-17	Work light, LED, left side	1	set
1-18	12" hollow chuck B-212A8 with cylinder SR1670	1	set
1-19	Double type chuck operation pedal	1	set
1-20	Dummy holder HSK-A63	1	set
1-21	Revolving center, MT No.5 (Non carbide tipped)	1	set
1-22	Hinge type chip conveyor (x900) H, Side incl. machine linked control and Intermittent feed for conveyor	1	set
1-23	Separated High pressure coolant unit 2MPa with sickner bag filter, for L/M through spindle coolant (Not incl. Coolant pressure high/low switchable)	1	set

CNC ADVANCETECH FZC

Q3- 94, SAIF ZONE, SHARJAH -UAE.
TEL: +971 50 4408451, www.cncadvancetech.com
E-MAIL: manju@cncadvancetech.com

OKUMA EUROPE GMBH

FICHTENHAIN A20 EUROPARK
KREFELD, GERMANY.
[TEL:+4921513740](tel:+4921513740), www.okuma.eu



1-24	Pre-arr. for Inprocess gauging RMP60 (Rainshaw FM, Offset type) not incl. Renishaw sensor and receiver (T019-590-007-88-1 will be arranged locally) *Holder, arrangement parts, and cap cover for receiver position will be arranged by OCJ.	1	set
1-25	Door interlock	1	set
1-26	Lubrication monitor A-1 + hydraulic source pressure detection	1	set
1-27	Chuck auto open / close with confirmation	1	set
1-28	Touch setter M +35mm rise-up	1	set
1-29	Electrical Power Source Application to suite local power source at each countries	1	set
1-30	Pump for Chip flusher and External M-spindle coolant:0.8kW(MTH2-50/5)+Pumping pump:0.55kW(MTH4-40/3)	1	set
1-31	Y-axis stroke 160mm (+80mm - -80mm)	1	set
1-32	Hydraulic power unit	1	set
1-33	Totally enclosed chip and coolant shield	1	set
1-34	Foundation washers and leveling jack screws	1	set
1-35	Colour 15" touch display	1	set
1-36	Operation panel raise up 70mm	1	set
1-37	OSP-P300SA 3D-M-E kit specifications	1	set
	*Workpiece coordinate system selection 10 sets	(1	set)
	*Coordinate conversion	(1	set)
	*Profile generation	(1	set)
	*Coordinate computation (including NYCL command)	(1	set)
	*Coordinate change: shift, rotate, copy	(1	set)
	*Real 3D simulation	(1	set)
	*Cycle time over check	(1	set)
	*Load monitor (spindle, feed axis)	(1	set)
	*NC operation monitor (incl. counter and totalization function)	(1	set)
	*Signal tower 2 colours	(1	set)
	*Spindle speed modulation control	(1	set)
	*Cycle time reduction function	(1	set)
	*Hi-Cut Pro	(1	set)
1-38	Thermo-Friendly Concept (H1 TAS-S and TAS-C)	1	set
1-39	Collision Avoidance System	1	set
1-40	Workpiece jump out detection	1	set
1-41	Tool compensation * Implemented as "simple operations" functions	1	set
1-42	Machine lifting hooks & hand tools	1	set
1-43	No test trial in JAPAN	1	set



Warranty period:

Spindles 36 months
General mechanical parts 24 months
Electrical components 24 months

IMPORTANT NOTES:

DUTY: CUSTOM DUTY, CUSTOM CLEARANCE AND LOCAL TRANSPORTATION FROM THE PORT TO THE CUSTOMER SITE IS AT CUSTOMER CHARGE

Preparation of foundation, Electrical connection, material handling equipment as crane, forklift, air, power, coolant is customer charge and responsibility.

During the installation, the presence of the end-user personnel is not required unless otherwise agreed, if possible, the staff of customer is welcome to transfer technical information

INSTALLATION AND COMMISSIONING:

Performed by CNC ADVANCETECH DWL LLC. Dubai, however moving of machine to Final place of installation, making necessary Civil and electrical works etc. Also during installation material handling equipment such as crane, fork lift to be provided Customer.

DELIVERY TERM : EX STOCK SHARJAH

ALL OKUMA DELIVERIES TO UAE IS SUBJECTED TO EXPORT LICENCE.

PURCHASE ORDER RELEASED ON:

OKUMA EUROPE GMBH

Europark Fichtenhain A 20

47807 Krefeld, Germany.

Telephone: +4921513740

MANJUNATH

Sales -Director

Mail Id: manju@cncadvancetech.com

Contact No: +971 50 4408451

CNC ADVANCETECH FZC

Q3- 94, SAIF ZONE, SHARJAH -UAE.
TEL: +971 50 4408451, www.cncadvancetech.com
E-MAIL: manju@cncadvancetech.com

OKUMA EUROPE GMBH

FICHTENHAIN A20 EUROPARK
KREFELD, GERMANY.
[TEL:+4921513740](tel:+4921513740), www.okuma.eu