

**OKUMA MULTI TASKING MACHINE
EX STOCK –SHARJAH- U.A.E**

MACHINE MODEL: MULTUS B400 II W 1500

 **OKUMA**

Intelligent Multitasking Machines

MULTUS BII series

MULTUS B400II



CNC ADVANCETECH FZC

B3- 11, SAIF ZONE, SHARJAH -UAE.

TEL: +971 50 4408451, www.cncadvancetech.com

E-MAIL: manju@cncadvancetech.com

OKUMA EUROPE GMBH

FICHTENHAIN A20 EUROPARK

KREFELD, GERMANY.

TEL: +4921513740, www.okuma.eu

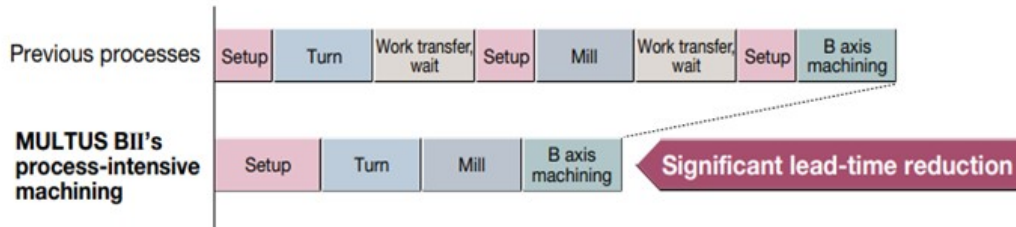
Extensive variations

- Choose the variant that best fits the workpiece.



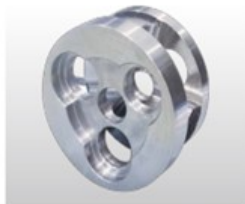
Lathe, vertical or horizontal machining center, and material handling operations consolidated into one machine...

Shorter deliveries and more effective use of floor space, plus fewer setups and operation with fewer workers, result in better process control and greatly reduced total cost.



Process-intensive machining of complex shaped workpieces

Abundant lineup handles a wide range of workpieces.



Carrier




Vacuum rotor



Spiral bevel gear

SPECIFICATIONS:



Model			MULTUS B400 II		
			W × 1500	W × 2000	
Capacity	Swing over carriage	mm	φ710* ¹		
	Nose-to-nose distance	mm	1,872	2,372	
	Max turning diameter	mm	φ710		
	Max turning length	mm	1,500	2,000	
	Max workpiece weight (chuck weight included)	Single side support* ²	kg	225 [Big bore spindle: 335] (for L/D=1.0) 150 [Big bore spindle: 225] (for L/D=2.5)	
		Double centered support ²	kg	225 [Big bore spindle: 335] (for L/D=1.0) 150 [Big bore spindle: 240] (for L/D=2.5)	
	Supported on both chuck	kg	700 [Main big bore spindle, Opposing big bore spindle: 940]		
Travel	X-axis	mm	690		
	Z-axis	mm	1,545	2,045	
	Y-axis	mm	230 (±115)* ³		
	W-axis	mm	1,550	2,050	
	C-axis control angle	deg	360° (min. control angle: 0.001°)		
	B-axis indexing angle	deg	-30 to 195° (min. control angle: 0.001°)		
Spindle	Spindle speed	min ⁻¹	38 to 3,800 [Big bore spindle: 30 to 2,800]		
	Number of spindle speed ranges		2 auto ranges (motor coil switching 2 ranges)		
	Spindle torque	N·m	700/477 (50%ED/cont) [Standard high-power•Big bore spindle: 900/660 (50%ED/cont)]		
	Spindle nose shape		JIS A2-8 [Big bore spindle: JIS A2-11]		
	Spindle bore diameter/Spindle bearing ID	mm	φ80/φ120 [Big bore spindle: φ110/φ150]		
	Spindle speed	min ⁻¹	38 to 3,800 [Big bore spindle: 30 to 3,000]		
Opposing spindle	Number of spindle speed ranges		2 auto ranges (motor coil switching 2 ranges)		
	Spindle torque	N·m	412.5/281.2 (20 min/cont) [Big bore spindle: 700/477 (30 min/cont)]		
	Spindle nose shape		JIS A2-8 [Big bore spindle: JIS A2-11]		
	Spindle bore diameter/Spindle bearing ID	mm	φ80/φ120 [Big bore spindle: φ110/φ150]		
Turret	Type		H1		
	Number of tools attachable to the turret		1 for both L and M		
	Tool shank diameter	mm	□25		
	Boring bar shank diameter	mm	φ40		
	Milling tool spindle speed	min ⁻¹	50 to 6,000 [50 to 10,000]		
	Milling tool spindle speed ranges		2 auto ranges (motor coil switching 2 ranges)		
Rapid traverse	X-, Z-, and Y-axis	m/min	X: 40, Z: 40, Y: 26		
	W-axis	m/min	20		
	C-, B-axis	min ⁻¹	C: 200, B: 30		
Effective thrust ⁴	X-, Ys-axes	kN	X: 5.7 (ascent) 15.3 (descent), Ys: 8.1		
	Z-, W-axis	kN	Z: 6.3, W: 5.1		
Automatic tool changer	Tool shank type		HSK-A63 [CAPTO C6]		
	Tool storage capacity		20 [40, 60, 120]		
	Max tool diameter	mm	φ90 (without adjacent tools: φ130)		
	Max tool length	mm	400 (from gauge line)		
	Max tool weight	kg	10		
Motors	Main spindle drive	kW	VAC22/15 (50%ED/cont) [Standard high-power•Big bore spindle: VAC 30/22 (50%ED/cont)]		
	Opposing spindle drive	kW	VAC 22/15 (20 min/cont) [Big bore spindle: VAC 22/15 (30 min/cont)]		
	Rotary tool spindle drive	kW	PREX 14/10 (5 min/cont) [10,000 min ⁻¹ spindle: PREX 20/14 (5 min/cont)]		
	Feed axis drive	X, Z, Ys-axis	kW	X: 3.5, Z: 4.6, Ys: 2.8	
		B-axis	kW	2.2	
	W-axis	kW	2.8		
Coolant pump motor (50/60 Hz)	kW	0.52/0.82 [3.7]			
Machine size	Machine height	mm	3,000	3,137	
	Floor space (including filter unit)	mm	5,750 × 2,770	7,050 × 2,770	
	Machine mass	kg	15,500	17,500	
Controller		OSP-P500S			

2	OKUMA Intelligent Multitasking Model MULTUS B400II W with OSP-P300SA CNC Controller (15inch OSP suite) Including CE mark	1	set
	〈European Standard Specification〉		
2-01	CE mark and EMC	1	set
2-02	Application for IEC standard	1	set
2-03	Spindle speed, 38 - 3,800 min-1, built-in integral motor spindle (coil two-shift)	1	set
2-04	Main spindle motor VAC 22/15kW (50%ED/cont.)	1	set
2-05	Spindle JIS A2-8, bore dia. 80mm	1	set
2-06	C-axis control, 360 degree at 0.001 degree increment	1	set
2-07	No chuck & no tube for Main-Spindle	1	set
2-08	Hollow cylinder SR1670 only for Main spindle	1	set
2-09	Sub spindle speed, 38 - 3,800min-1, built-in integral motor spindle	1	set
2-10	Sub spindle motor VAC22/15KW (20min./cont.)	1	set
2-11	Spindle JIS A2-8, bore dia. 80mm	1	set
2-12	No chuck & no tube for Sub-Spindle	1	set
2-13	Hollow cylinder SR1670 only for Sub-spindle	1	set
2-14	H1 ATC turret HSK-A63	1	set
2-15	B-axis indexing, 0.001 degree indexing	1	set
2-16	Rotary tool spindle speed, 50 - 6,000 min-1	1	set
2-17	Rotary tool drive motor, PREX 14/10 KW (5 min./cont.)	1	set
2-18	M spindle through coolant supply spec.	1	set
2-19	20-tool ATC	1	set
2-20	Max tool weight: 10kg Max tool length: 400mm (from gauge line)	1	set
2-21	Work light, LED, left and right each	1	set
2-22	Double type chuck operation pedal	1	set
2-23	Dummy holder HSK-A63	1	set
2-24	Chip pan	1	set
2-25	Pre-arrangement for High pressure coolant unit 7MPa * L/M through spindle coolant pressure high/low switchable function <u>(High/Low pressure pumps and filter unit will be arranged locally)</u> * External M-spindle coolant is low (Std) pressure only	1	set
2-26	Door interlock	1	set
2-27	Lubrication monitor A-1+ Hydraulic original	1	set
2-28	Chuck auto open / close with confirmation for main and sub	1	set
2-29	Chuck air blower for sub spindle + Main spindle	1	set

CNC ADVANCETECH FZC

B3- 11, SAIF ZONE, SHARJAH -UAE.
TEL: +971 50 4408451, www.cncadvancetech.com
E-MAIL: manju@cncadvancetech.com

OKUMA EUROPE GMBH

FICHTENHAIN A20 EUROPARK
KREFELD, GERMANY.
[TEL:+4921513740](tel:+4921513740), www.okuma.eu



2-30	Touch setter M (for chuck 15inch or less)	1	set
2-31	Electrical Power Source Application to suite local power source at each countries	1	set
2-32	Pump for Chip flusher and External M-spindle coolant:0.8kW(MTH2-50/5)+Pumping pump:0.55kW(MTH4-40/3)	1	set
2-33	Y-axis stroke 230mm (+115mm - -115mm)	1	set
2-34	Hydraulic power unit	1	set
2-35	Totally enclosed chip and coolant shield	1	set
2-36	Foundation washers and leveling jack screws	1	set
2-37	Colour 15" touch display	1	set
2-38	Operation panel rised-up +78mm	1	set
2-39	OSP-P300SA 3D-M-E kit specifications	1	set
	*Workpiece coordinate system selection 10 sets	(1	set)
	*Coordinate conversion	(1	set)
	*Profile generation	(1	set)
	*Coordinate computation (including NYCL command)	(1	set)
	*Coordinate change: shift, rotate, copy	(1	set)
	*Real 3D simulation	(1	set)
	*Cycle time over check	(1	set)
	*Load monitor (spindle, feed axis)	(1	set)
	*NC operation monitor (incl. counter and totalization function)	(1	set)
	*Signal tower 2 colours	(1	set)
	*Spindle speed modulation control	(1	set)
	*Cycle time reduction function	(1	set)
	*Hi-Cut Pro	(1	set)
2-40	Thermo-Friendly Concept (H1 TAS-S and TAS-C)	1	set
2-41	Collision Avoidance System	1	set
2-42	Workpiece jump out detection	1	set
2-43	Tool compensation * Implemented as "simple operations" functions	1	set
2-44	Machine lifting hooks & hand tools	1	set

OPTIONS INCLUDED IN THE MACHINE:

2260115	Big bore spindle, A2-11/2,800min-1 30/22kW incl. F2596 cylinder only (i/o Std spindle with SR1670) and Pre-arr. hydraulic temperature regulator	1	set
2260210	Non del of Std cylinder SR1670, for main Std spindle	1	set
2260410	Milling spindle (H1) 10,000min-1, PREX Motor 20/14kW (i/o Std)	1	set
2260910	40-tools ATC (instead of STD 20-tools ATC)	1	set
2261151	Coolant flush in slots beside H1 turret	1	set
2260315	15" hollow chuck B-215A101 and draw tube (in case Main Big bore)	1	set
2260820	10" hollow chuck B210A8 and draw tube, for sub-STD spindle	1	set
2261055	Hinge type chip conveyor H, Side for BCD1500 incl. machine linked control and Intermittent feed for conveyor	1	set

WARRANTY:

Spindles 36 months

General mechanical parts 24 months

Electrical components 24 months

CNC ADVANCETECH FZC

B3- 11, SAIF ZONE, SHARJAH -UAE.
TEL: +971 50 4408451, www.cncadvancetech.com
E-MAIL: manju@cncadvancetech.com

OKUMA EUROPE GMBH

FICHTENHAIN A20 EUROPARK
KREFELD, GERMANY.
[TEL:+4921513740](tel:+4921513740), www.okuma.eu

IMPORTANT NOTES:

DUTY: CUSTOM DUTY, CUSTOM CLEARANCE AND LOCAL TRANSPORTATION FROM THE PORT TO THE CUSTOMER SITE IS AT CUSTOMER CHARGE

Preparation of foundation, Electrical connection, material handling equipment as crane, forklift, air, power, coolant is customer charge and responsibility.

During the installation, the presence of the end-user personnel is not required unless otherwise agreed, if possible, the staff of customer is welcome to transfer technical information

INSTALLATION AND COMMISSIONING:

Performed by CNC ADVANCETECH FZC, however moving of machine to Final place of installation, making necessary Civil and electrical works etc. Also during installation material handling equipment such as crane, fork lift to be provided Customer.

DELIVERY : EX WORKS SHARJAH

DELIVERY TERM : EX STOCK SHARJAH

PAYMENT TERM : 90% ON ORDER, 10% AFTER INSTALLATION

ALL OKUMA DELIVERIES TO UAE IS SUBJECTED TO EXPORT LICENCE.

PURCHASE ORDER RELEASED ON:

CNC ADVANCETECH FZC

WAREHOUSE Q3-94, SAIF ZONE

SHARJAH, UAE.

Telephone: +97165218113

MANJUNATH

Sales -Director

Mail Id: manju@cncadvancetech.com

Contact No: +971 50 4408451