

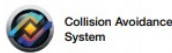
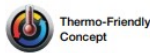


OKUMA MULTI TASKING MACHINE - EX STOCK GERMANY

Intelligent Multitasking Machines

MULTUS BII series

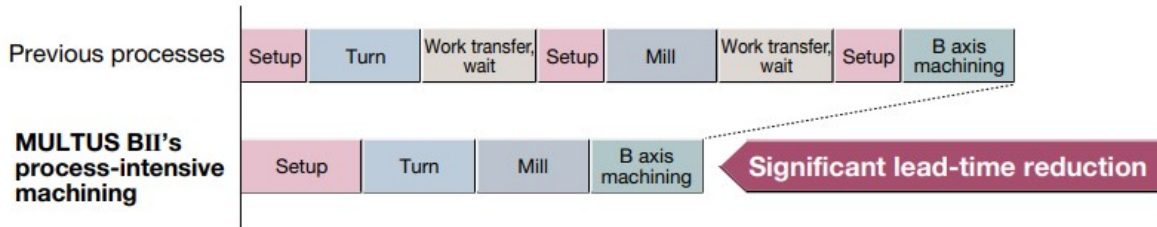
MULTUS B300II.





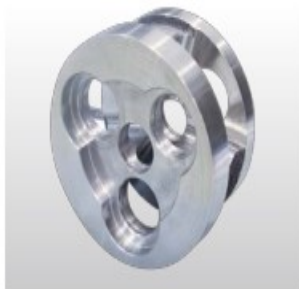
Lathe, vertical or horizontal machining center, and material handling operations consolidated into one machine...

Shorter deliveries and more effective use of floor space, plus fewer setups and operation with fewer workers, result in better process control and greatly reduced total cost.

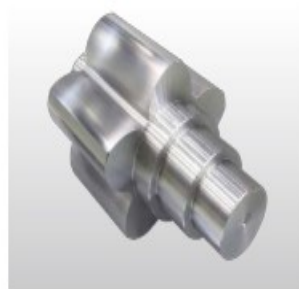


Process-intensive machining of complex shaped workpieces

Abundant lineup handles a wide range of workpieces.



Carrier



Vacuum rotor



Spiral bevel gear



Machine specifications:

Specifications		MULTUS B300II	
		×900	
		W	
Capacity	Swing over saddle	mm (in.)	ø630 (24.8) (Y=0)
	Max machining dia	mm (in.)	ø630 (24.8)
	Distance between centers	mm (in.)	900 (35.43)
Travels	X axis	mm (in.)	580 (+560 to -20) (22.83 (+22.05 to -0.79))
	Z axis	mm (in.)	935 (36.81)
	Y axis	mm (in.)	160 (+80 to -80) (6.3 (+3.15 to -3.15))
	W axis	mm (in.)	1,000 (39.37)
	C-axis control	degree	360 (min control angle 0.001)
	B axis indexing angle	degree	225 (-30 to 195 (min control angle 0.001))
	Main spindle	Spindle speed	min ⁻¹
Speed ranges			2 auto ranges (2-speed motor coil switching)
Spindle nose			JIS A2-6 [JIS A2-8]
Tapered bore / Bearing dia		mm (in.)	ø62/ø100 [ø80/ø120] (ø2.44/ø3.94 [ø3.15/ø4.72])
Opposing spindle	Spindle speed	min ⁻¹	45 to 5,000
	Speed ranges		2 auto ranges (motor coil switching)
	Spindle nose		JIS A2-6
	Tapered bore / Bearing dia	mm (in.)	ø62/ø100 (ø2.44/ø3.94)
Turret	Type		H1 ATC
	No. of tools stations		1 for both L and M tools
	OD tool shank dimensions/ ID tool shank diameter	mm (in.)	□25/ø40 (□1/ø1-1/2)
Milling tool spindle	Speed range	min ⁻¹	50 to 6,000 [50 to 10,000]
	Max torque	N-m	65.7/44.8 (3 min/cont) [57.3/38.2 (5 min/cont)]
Feedrates	Cutting feedrate	mm/rev	0.001 to 1,000.000
	Rapid traverse	mm/min	X : 40,000 Z : 40,000 Y : 26,000 W : 20,000
		min ⁻¹	C : 200 B : 30
ATC	Tool shank / Pull stud		HSK-A63 [CAPTO C6]
	No. of tools	tools	20 [40, 60, 120]
	Max tool dia	mm (in.)	ø90 (3.54) (ø130 (5.12) w/o adjacent tools)
	Max tool length	mm (in.)	300 (11.81) (from gauge line)
Motors	Max tool weight	kg (lb)	8 (18)
	Main spindle	kW (hp)	15/11 (20/15) (20 min/cont) [22/15 (30/20) (20 min/cont)]
	Opposing spindle	kW (hp)	15/11 (20/15) (20 min/cont)
	Milling tool spindle	kW (hp)	11/7.5 (15/10) (5 min/cont) [16/11 (21/15) (5 min/cont)]
	Axis drive motors	kW (hp)	X : 3.5 (5), Y : 2.9 (4), Z : 3.5 (5)
	W axis motors	kW (hp)	2.9 (4)
Machine size	Coolant pump motor (50/60Hz)	kW (hp)	0.55/0.75 (0.7/1)
	Height	mm (in.)	2,587 (101.85)
	Floor space (with tank)	mm×mm (in.)	4,035×2,257 (158.86 × 88.86)
	Weight (with CNC)	kg (lb)	10,300 (22.660)



OPEN POSSIBILITIES

STANDARD SPECIFICATION: MULTUS B300II W

2	OKUMA Intelligent Multitasking Model MULTUS B300II W with OSP-P300SA CNC Controller (15inch OSP suite) Including CE mark	1	set
("GENOS Package" spec.)			
2-01	CE mark and EMC	1	set
2-02	Application for IEC standard	1	set
2-03	Big bore spindle, spindle speed, 38 - 3,800 min-1, built-in integral motor spindle (coil two-shift)	1	set
2-04	Main spindle motor VAC 22/15kW (20 min./cont.)	1	set
2-05	Spindle JIS A2-8, bore dia. 80mm	1	set
2-06	C-axis control, 360 degree at 0.001 degree increment	1	set
2-07	12" hollow chuck B-212A8 with cylinder SR1670 for Main spindle	1	set
2-08	Sub spindle speed, 45 - 5,000min-1,built-in integral motor spindle	1	set
2-09	Sub spindle motor VAC15/11KW(20min./cont.)	1	set
2-10	Spindle JAS A2-6, bore dia. 62mm	1	set
2-11	10" hollow chuck B-210A6 with cylinder SR1453 for Sub spindle	1	set
2-12	H1 ATC turret HSK-A63	1	set
2-13	B-axis indexing, 0.001 degree indexing	1	set
2-14	Rotary tool drive motor, PREX 11/ 7.5 KW (5 min./cont.)	1	set
2-15	Rotary tool spindle speed, 50 - 6,000 min-1	1	set
2-16	M spindle through coolant supply spec.	1	set
2-17	40-tool ATC	1	set
2-18	Max tool weight: 8kg Max tool length: 300mm (from gauge line)	1	set
2-19	Work light, LED, left and right each	1	set
2-20	Double type chuck operation pedal	1	set
2-21	Dummy holder HSK-A63	1	set
2-22	Hinge type chip conveyor (x900) H, Side incl. machine linked control and Intermittent feed for conveyor	1	set
2-23	Separated High pressure coolant unit 2MPa with sickner bag filter, for L/M through spindle coolant (Not incl. Coolant pressure high/low switchable)		
2-24	Pre-arr. for Inprocess gauging RMP60 (Rainshaw FM, Offset type) not incl. Renishaw sensor and receiver (T019-590-007-88-1 will be arranged locally) *Holder, arrangement parts, and cap cover for receiver position will be arranged by OCJ.	1	set

CNC ADVANCETECH FZC

Q3- 94, SAIF ZONE, SHARJAH -UAE.
TEL: +971 50 4408451, www.cncadvancetech.com
E-MAIL: manju@cncadvancetech.com

OKUMA EUROPE GMBH

FICHTENHAIN A20 EUROPARK
KREFELD, GERMANY.
[TEL:+4921513740](tel:+4921513740), www.okuma.eu



2-25	Door interlock	1	set
2-26	Lubrication monitor A-1 + hydraulic source pressure detection	1	set
2-27	Chuck auto open / close with confirmation for main and sub	1	set
2-28	Chuck air blower for sub spindle + Main spindle	1	set
2-29	Touch setter M +35mm rise-up	1	set
2-30	Electrical Power Source Application to suite local power source at each countries	1	set
2-31	Pump for Chip flusher and External M-spindle coolant:0.8kW(MTH2-50/5)+Pumping pump:0.55kW(MTH4-40/3)	1	set
2-32	Y-axis stroke 160mm (+80mm - -80mm)	1	set
2-33	Hydraulic power unit	1	set
2-34	Totally enclosed chip and coolant shield	1	set
2-35	Foundation washers and leveling jack screws	1	set
2-36	Colour 15" touch display	1	set
2-37	Operation panel raise up 70mm	1	set
2-38	OSP-P300SA 3D-M-E kit specifications	1	set
	*Workpiece coordinate system selection 10 sets	(1	set)
	*Coordinate conversion	(1	set)
	*Profile generation	(1	set)
	*Coordinate computation (including NYCL command)	(1	set)
	*Coordinate change: shift, rotate, copy	(1	set)
	*Real 3D simulation	(1	set)
	*Cycle time over check	(1	set)
	*Load monitor (spindle, feed axis)	(1	set)
	*NC operation monitor (incl. counter and totalization function)	(1	set)
	*Signal tower 2 colours	(1	set)
	*Spindle speed modulation control	(1	set)
	*Cycle time reduction function	(1	set)
	*Hi-Cut Pro	(1	set)
2-39	Thermo-Friendly Concept (H1 TAS-S and TAS-C)	1	set
2-40	Collision Avoidance System	1	set
2-41	Workpiece jump out detection	1	set
2-42	Tool compensation * Implemented as "simple operations" functions	1	set
2-43	Machine lifting hooks & hand tools	1	set
2-44	No test trial in JAPAN	1	set