

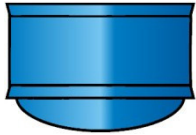
## Cartridge Component Breakdown

Disposable, plastic cartridges provide a clean, efficient and a low cost method to meet all types of production requirements. Plungers with a wiper leading edge clean each cartridge thoroughly. Tip and end caps are available making the system ideal for pre-packaged materials as well as pre-mixed and frozen.



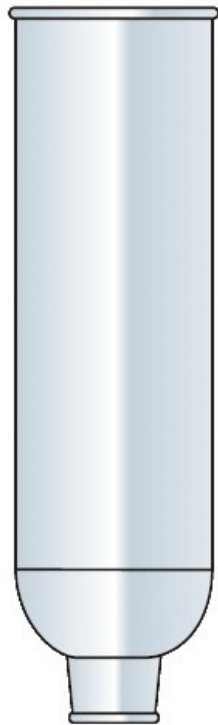
### End Caps

Used to prevent dust contamination when the cartridge is not in use.



### Plungers

Prevents fluid leaking out of nozzle end. Used to ensure even pressure distribution throughout the fluid.



### Cartridges

Used when a standard syringe capacity is not large enough.

#### Features:

Standard and black polyethylene available in all sizes. Low density available in most common cartridge sizes, Industrial standard 1/4 NPT output thread on all sizes, Other color options available, Excellent performance when using premixed or frozen fluids with low density cartridges.



### Tip Caps

Used to seal cartridge end when not in use.

## Cartridges



**TS25C** 2.5oz/74ml HD  
**TS25C-LD** 2.5oz/74ml LD 2.5oz  
**TS25C-GREEN** /74mlHD green



**TS60C** 6oz/177ml HD  
**TS60C-LD** 6oz/177ml LD  
**TS60C-BLACK** 6oz/177ml HD black  
**TS60C-GREEN** 6oz/177ml HD green



**TS80C** 8oz/237ml HD  
**TS80C-LD** 8oz/237ml LD



**TS120C** 12oz/355ml HD  
**TS120C-LD** 12oz/355ml LD  
**TS120C-BLACK** 12oz/355ml HD black  
**TS120C-GREEN** 12oz/355ml HD green



**TS110C** 1/10 gallon/325ml HD  
**TS110C-LD** 1/10 gallon/325ml LD  
**TS110C-BLACK** 1/10 gallon HD black



**TS20C-100** 20oz/591ml HD  
**TS20C-BLACK** 20oz/591ml HD black

## Plungers



**TS1P** Standard LDPE blue wiper plunger. 2.5oz to 12oz



**TS1P-BLACK** Standard LDPE black wiper plunger. 2.5oz to 12oz



**TS1WP** Extended LDPE wiper plunger. 2.5oz to 12oz



**TS1WP-RIB** To reduce air entrapment during filling and dispensing. LDPE 2.5oz to 12oz



**TS3WP-MD** Reduced MDPE wiper plunger. 2.5oz to 12oz



**TS2PW** 1/10 gallon LDPE/EVA standard white wiper plunger



**TS2P-BLACK** 1/10 gallon LDPE black wiper plunger



**TS20P** 20oz standard MDPE wiper plunger



**TS20PLD** 20oz LDPE wiper plunger

## End Caps



**TS2C** 2.5oz – 12oz end cap  
**TS4C** 1/10 gallon end cap  
**TS6C** 20oz end cap

## Tip Caps



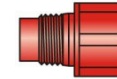
**TS3P** Threaded cartridge cap – Tri-seal  
 For use on all cartridge sizes



**TS4P** Threaded cartridge cap – square  
 For use on all cartridge sizes



**TS5P** Snap on cartridge cap – Tri-Seal  
 For use on all cartridge sizes



**TS6P-RED** Threaded cartridge red cap  
 For use on all cartridge sizes

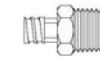


**TS6P-BLACK** Threaded cartridge black cap  
 For use on all cartridge sizes



**TS9X** Push on cartridge cap  
 For use on all cartridge sizes

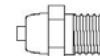
## Cartridge Adaptors



Part Number: **TSD931-15**  
 Material: Black Nylon/Celcon  
 Thread Size: 1/4" NPT  
 Use: Syringe filling



Part Number: **TSD931-7**  
 Material: White polypropylene  
 Thread Size: 1/4 -18 NPT  
 Use: Dispense tip adaptor



Part Number: **TSD931-14**  
 Material: Black polypropylene  
 Thread Size: 1/4 -18 NPT Use:  
 Dispense tip adaptor



Part Number: **TSD918-3**  
 Material: Clear Polypropylene  
 Use: Male/Female 1/4 -18 NPT

## Dispense Nozzles

### 2.5"/63.5mm length Orifice

<b>TS216</b>	0.063"/1.6mm
<b>TS218</b>	0.125"/3.18mm
<b>TS218-LD</b>	0.125"/3.18mm

### 4"/101.6mm length

<b>TS416</b>	0.063"/1.6mm
<b>TS416-LD</b>	0.063"/1.6mm
<b>TS418</b>	0.125"/3.18mm
<b>TS432</b>	0.031"/0.79mm
<b>TS432-LD</b>	0.031"/0.79mm
<b>TS490</b>	0.094"/2.39mm

### 6" length/152.4mm

<b>TS616</b>	0.063"/1.6mm
<b>TS618</b>	0.125"/3.18mm

## Specialty



<b>TS1050</b>	<b>A</b> 0.06"/1.52mm <b>B</b> 0.5"/12.7mm
---------------	---



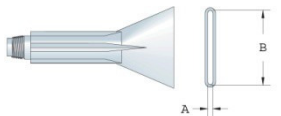
<b>TS1050-45</b>	<b>A</b> 0.06"/1.52mm <b>B</b> 0.5"/12.7mm
------------------	---



<b>TS1075</b>	<b>A</b> 0.13"/3.30mm <b>B</b> 0.75"/19.05mm
---------------	---



<b>TS1100</b>	<b>A</b> 0.13"/3.30mm <b>B</b> 1"/25.4mm
---------------	---



<b>TS1175</b>	<b>A</b> 0.13"/3.30mm <b>B</b> 1.75"/44.45mm
---------------	---



<b>TS3106</b>	<b>A</b> 0.11"/2.79mm <b>B</b> 0.35"/8.89mm <b>C</b> 0.06"/1.52mm
---------------	---



<b>TS3206</b>	<b>A</b> 0.11"/2.79mm <b>B</b> 0.35"/8.89mm <b>C</b> 0.06"/1.52mm
---------------	---

## TS Series Retainers

High performance TS Series Aluminium retainers "twist-lock" to their dispensing cap. The retainers are light weight & the durable construction allows up to 100psi (0 to 6.9 bar) applied air pressure.

### With visual low fluid slots



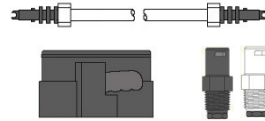
<b>918-030-000</b>	2.5oz/74ml
<b>918-031-000</b>	6oz/177ml
<b>918-034-000</b>	8oz/237ml
<b>918-032-000</b>	12oz/355ml

### Without visual low fluid slots



<b>918-044-000</b>	2.5oz/74ml
<b>918-045-000</b>	6oz/177ml
<b>918-046-000</b>	8oz/237ml
<b>918-047-000</b>	12oz/355ml

## TS Retainer Caps



<b>918-001-004</b>	TS Series cap
<b>918-000-002</b>	Air hose assembly
<b>534</b>	Adaptor w/shutoff
<b>534A</b>	Adaptor no shutoff

## G-Series Retainers – for 1/10 gallon & 20oz. No slot option.

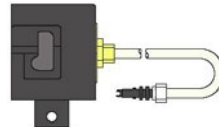


<b>110-2</b>	1/10 gallon/325ml
--------------	-------------------

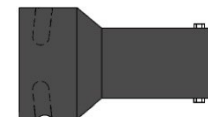


<b>101-20R*</b>	20oz/591ml
-----------------	------------

## G-Series Retainer Caps



<b>918-000-036</b>	1/10 gallon and 20oz cap
--------------------	-----------------------------



<b>101-20A*</b>	20oz reducer
-----------------	--------------

\*For the 20oz retainer (**101-20R**) to fit the cap (**918-000-036**), the reducer (**101-20A**) must be used.



# Cartridge Product Guide



[www.adhesivedispensing.net](http://www.adhesivedispensing.net)

Tel. +44 (0) 1908 686660