



Thermofoil



Painted

---

## ECONOMIC KITCHENS



### KINGSTON CABINETRY CATALOGUE V1

***Customizable. Affordable. Modern.***

Our line of economic kitchens has a variety of options at unbeatable pricing. Canadian made, this cabinetry is ideal for a cost-effective upgrade, starter homes, commercial projects, rental homes, multi-unit buildings and more. Within the economic line, you can choose from thermofoil or MDF painted doors, with different profile and finish options.

# CATALOGUE

## 1. ECONOMIC CABINETRY- THERMOFOIL CABINET DOORS - \$

There are plenty of reasons to choose thermofoil doors for your renovation- this is affordable solution that looks great in a modern space. Thermofoil is easy to care for and low maintenance, because it is non-porous your cabinets can easily be kept clean with a damp cloth. Seamless joints and corners also prevent the buildup of bacteria. Manufactured to withstand humidity and temperature fluctuations- the tough PVC film also makes the components resistant to corrosion, UV, and scratching.



### STANDARD FEATURES -

- European Frameless Build
- White Melamine – 5/8”
- 3/4” Doors
- Soft-Close Doors, Drawers
- 5/8” White Melamine Drawer Boxes

---

## 2. ECONOMIC CABINETRY- MDF PAINTED CABINET DOORS - \$\$

In comparison, painted cabinet doors have more definition and visible detail- these are sprayed to finish in a cabinet specific Benjamin Moore paint. Painted doors have a smooth finish adding touch of elegance to your space, great for projects that have medium to low wear and tear. Available in 5 profile options and 8 standard finishes. Have a specific colour in mind? No problem- these can be custom painted to any Benjamin Moore finish.



### STANDARD FEATURES -

- European Frameless Build
- White Melamine – 5/8”
- 3/4” Doors
- Soft-Close Doors, Drawers
- 5/8” White Melamine Drawer Boxes

# ECONOMIC – THERMOFOIL DOOR OPTIONS

## A- DOOR PROFILES (4)

**V-Groove**



**Shaker**



**Raised Panel 1**



**Raised Panel 2**



## B- DOOR FINISHES (4)

**Designer White**

Designer White

**Folkstone Grey**

Folkstone Grey

**Onyx Black**

Onyx Black

**Chocolate Brown**

Chocolate Brown

---

Estimated wait times for Economic- Thermofoil kitchens are an industry leading 4 weeks from point of order.

- Designer White, Folkstone Grey, Onyx Black, Chocolate Brown = Soft Gloss finishes

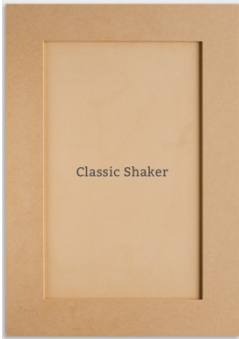
---



# ECONOMIC – MDF PAINTED DOOR OPTIONS

## A- DOOR PROFILES (5)

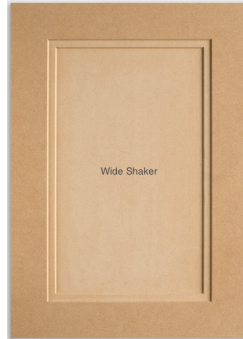
**Shaker**



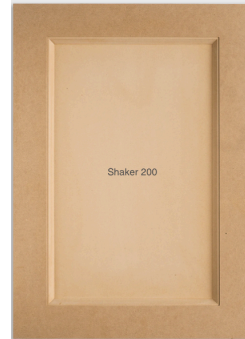
**Shaker 100**



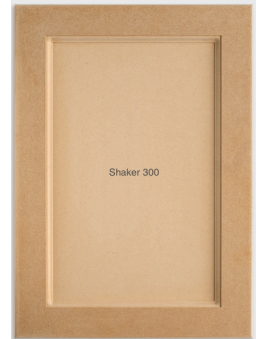
**Shaker 200**



**Shaker 300**



**Shaker 400**

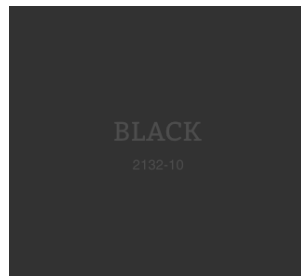


## B- DOOR FINISHES (7)

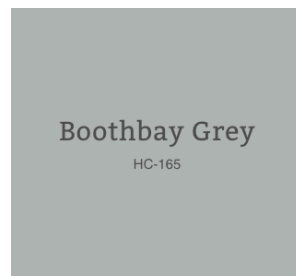
**Cloud White**



**Black**



**Boothbay Grey**



**Simply White**



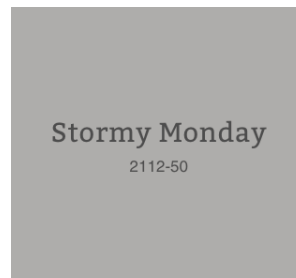
**Silver Satin**



**Chantilly Lace**



**Stormy Monday**



**Custom Colour (BJM)**



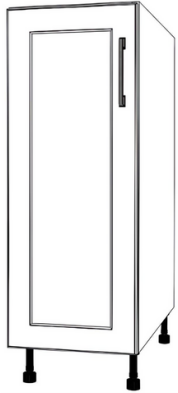
- Match any of the 5 door profiles with any of the 7 finishes.

- Inquire for pricing on custom finish cabinetry – BJM catalog

# CATALOGUE

## 1. BASE CABINETS

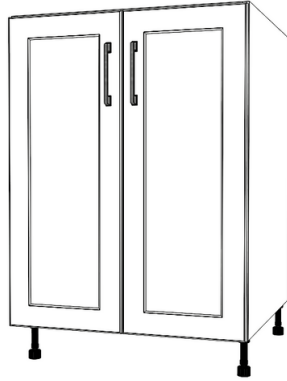
### 1 – Door



Available 7” W – 23” W

BH07 | T- \$166 | P- \$225  
BH09 | T- \$181 | P- \$239  
BH12 | T- \$205 | P- \$301  
BH15 | T- \$226 | P- \$348  
BH18 | T- \$250 | P- \$394  
BH21 | T- \$272 | P- \$441

### 2 – Door



Available 24” W – 36” W

BH24 | T- \$303 | P- \$495  
BH27 | T- \$326 | P- \$543  
BH30 | T- \$348 | P- \$588  
BH33 | T- \$372 | P- \$635  
BH36 | T- \$393 | P- \$682

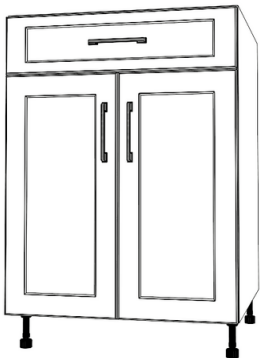
### 1 – Drawer – 1 Door



Available 12” W – 22” W

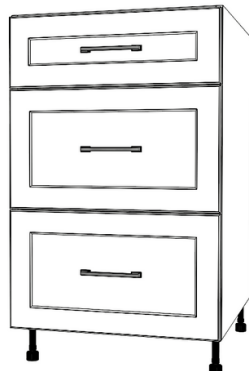
BD12 | T- \$276 | P- \$368  
BD15 | T- \$301 | P- \$419  
BD18 | T- \$328 | P- \$468  
BD21 | T- \$355 | P- \$519

### 1 – Drawer – 2 Door



Available 24” W – 36” W  
BD24 | T- \$392 | P- \$578  
BD27 | T- \$419 | P- \$627  
BD30 | T- \$446 | P- \$679  
BD33 | T- \$472 | P- \$730  
BD36 | T- \$499 | P- \$780

### 3 – Drawer



Available 12” W – 36” W  
DB12 | T- \$473 | P- \$556  
DB15 | T- \$501 | P- \$604  
DB18 | T- \$538 | P- \$660  
DB21 | T- \$573 | P- \$716  
DB24 | T- \$608 | P- \$772  
DB27 | T- \$644 | P- \$828  
DB30 | T- \$678 | P- \$884  
DB33 | T- \$708 | P- \$933

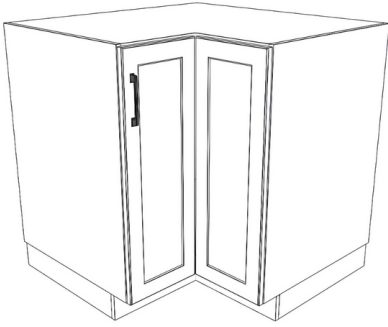
### Blind Corner



BC36 (L/R) | T- \$388 | P- \$483  
BC38 (L/R) | T- \$411 | P- \$532

DB36 | T- \$742 | P- \$990

## Easy Reach Corner



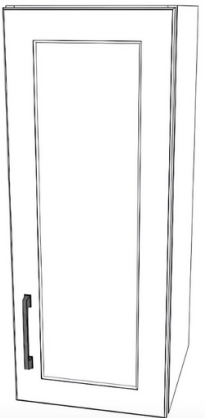
LZ36 | T- \$493 | P- \$602

LZ38 | T- \$526 | P- \$648

- 
- Adjustable Feet (4-4.5") + Toe Kick
  - Depth - 24" D | Height - 30" H Cabinet + 4.5" Toe Kick = 34.5"
  - End Panel Required for Exposed Sides
- 

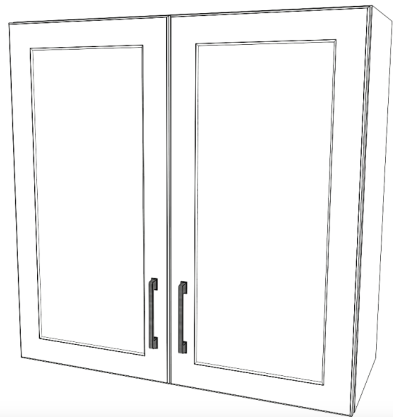
## 2. WALL CABINETS

### 1 – Door – Wall



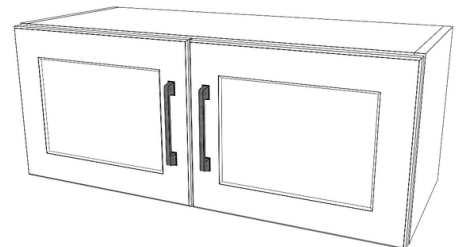
W"- (7-23")  
H"- (24, 30, 36, 42")  
T- \$96 - \$301  
P- \$141 - \$529

### 2 – Door – Wall



W"- (24-36")  
H"- (12-24", 30", 36", 42")  
T- \$199 - 437  
P- \$359 - 794

### 2 – Door – Stove / Fridge



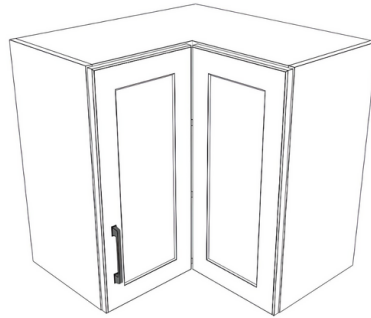
W"- (30, 33, 36")  
H"- (12, 15, 18, 21, 25")  
D- 12, 24"  
T- \$125 - 270  
P- \$179 - 413

**Blind Corner - Wall**



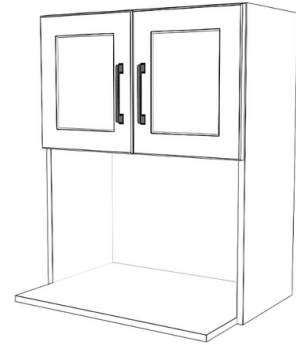
W"- (24-36")  
H"- (24, 30, 36, 42")  
T- \$218 – 386  
P- \$290 – 468

**Corner – Wall**



W"- (24, 26")  
H"- (24, 30, 36")  
T- \$352 - 465  
P- \$542 – 660

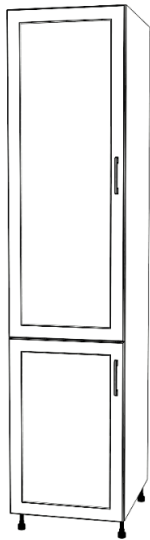
**Microwave Cabinet**



W"- 24" W  
H"- (24, 30, 36, 42")  
T- \$199 – 321  
P- \$426 – 559

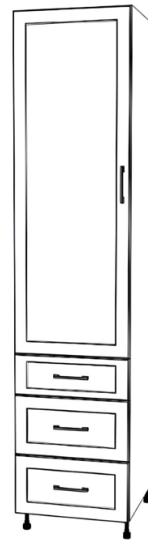
**3. PANTRY CABINETS**

**Pantry- 2 Door**



H- 84, 90, 94"  
W- 12" W – 22" W  
T- \$544 – 770  
P- \$776 – 1217

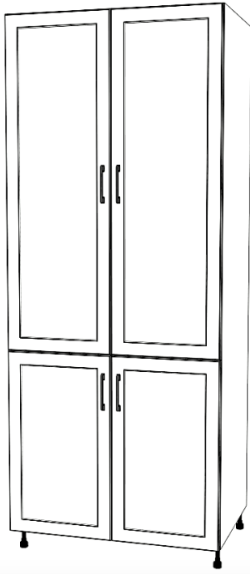
**Utility Hutch – 1 Door – 3 Drawer  
(Thermofoil Only)**



H- 84, 90, 94"  
W- 12" W – 22" W  
T- \$771 - 1045



### Pantry- 4 Door



H- 84, 90, 94"  
W- 24" W – 36" W  
T- \$811 - 1078  
P- \$1303 – 1829

### Utility Hutch – 2 Door – 3 Drawer (Thermofoil Only)



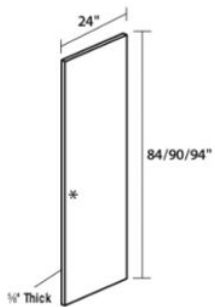
H- 84, 90, 94"  
W- 24" W – 36" W  
Price- T- \$1096 – 1426

---

## 4. PANELS & FILLERS

- Use this collection of fridge panels, toe kicks, fillers, dishwasher panels and end panels to put the finishing touches on your kitchen.

### Fridge Panel (84/90/94" H)



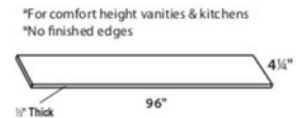
T- \$222 – 267  
P- \$625 – 714

### 3" Wide Filler (30/40/96" H)



T- \$9 – 38  
P- \$15 – 64

### Toe Kick

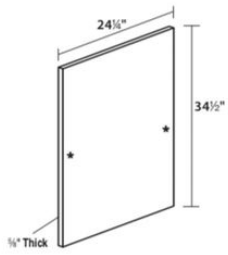


T- \$45  
P- \$114

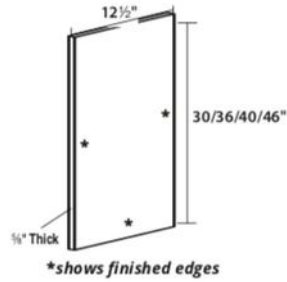


**Dishwasher / Base End Panel**

**Wall End Panel (30/36/42")**



T- \$99  
P- \$261



T- \$44 - 62  
P- \$115 - 140

**5. MOULDINGS (96")**

**Crown Moulding 1 (1-1/8")**



W- 2-1/4" H- 1-1/8"  
T- \$84  
P- \$148

**Crown Moulding 2 (2-1/2")**



W- 3-1/2" H- 2-1/2"  
T- \$107  
P- \$198

**Crown Moulding 3 (3-1/4")**



W- 4-1/2" H- 3-1/4"  
T- \$121  
P- \$235

**Crown Moulding 4 (1-3/4")**



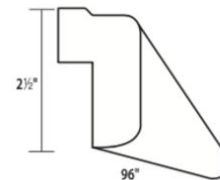
H- 1-3/4"  
T- \$120  
P- \$210

**Crown Moulding 5 (1 x 1-1/8")**



H- 3-5/8"  
T- \$179  
P- \$318

**Light Valence 1 (2-1/2")**



H- 2-1/2"  
T- \$64  
P- \$96

# ECONOMIC KITCHENS



## KINGSTON CABINETRY CATALOGUE V1

---

