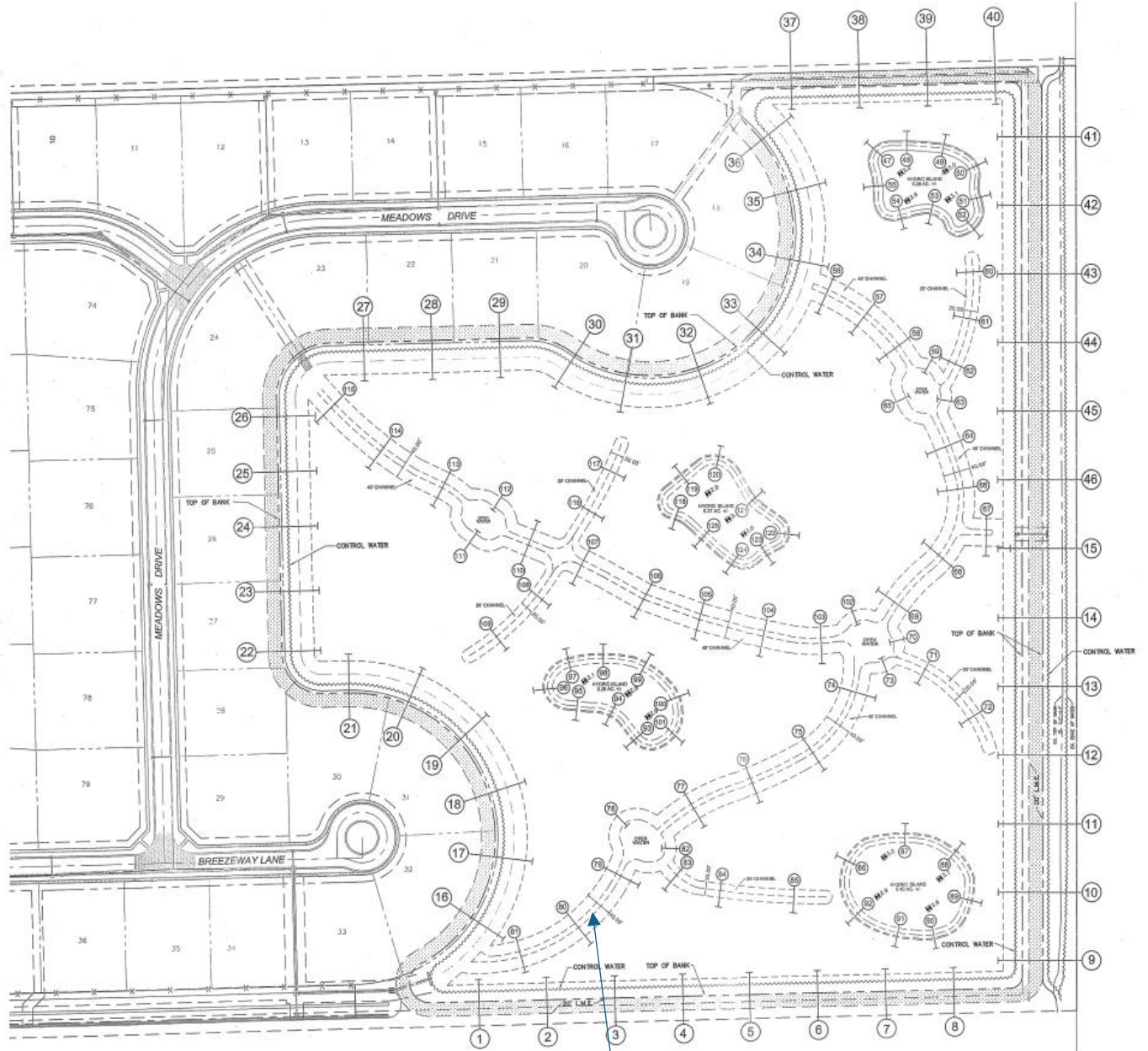


Drone Footage of Deepwater channels that cut across the preserve and comparisons to as-builts

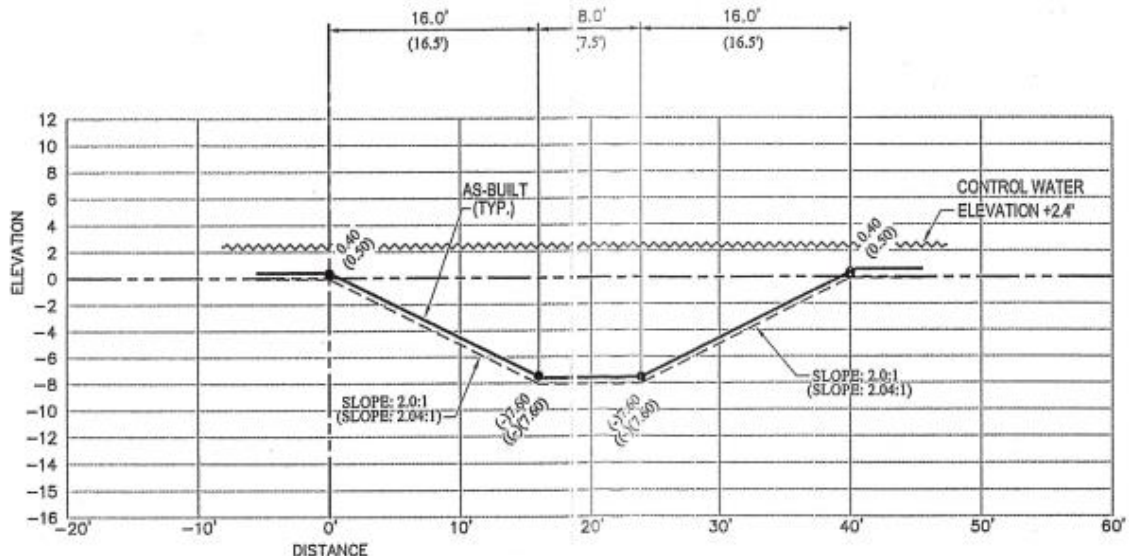


Shallowing or Blatant Misrepresentation in Deep Water Channel from Gravity Pipe coming from smaller lake and connecting to the outfall – next to Idrees home

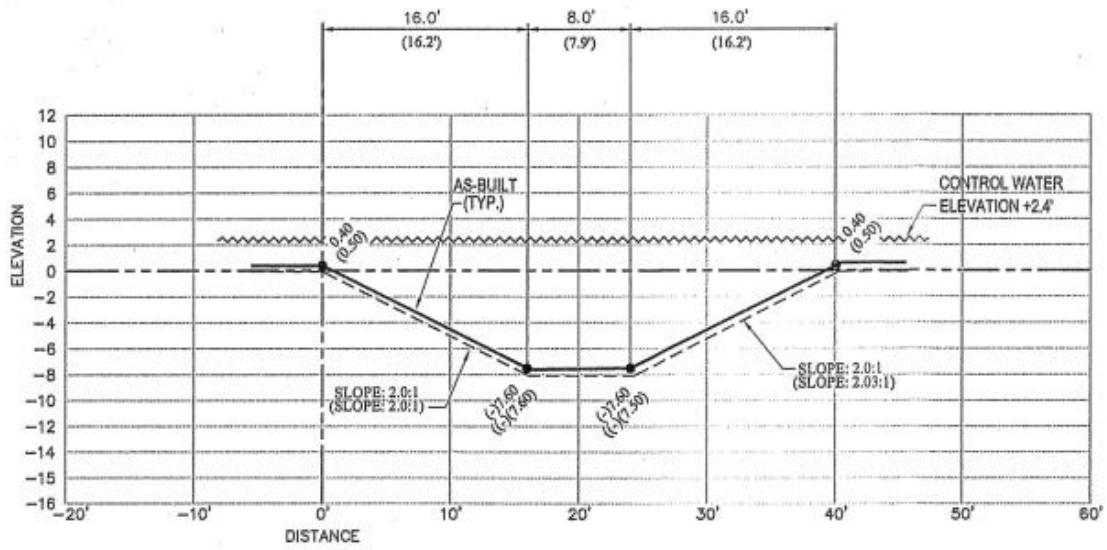
For sections 74-81 and 68-69 see drone video at: <https://vimeo.com/1008658298?share=copy#t=0>

Shallowing is illustrated by vegetation covering entire cross sections (79-81;83;75-76;69). This phenomenon of accelerated deviation from as-builts in the stormwater flowage, drainage and retention channels will continue over time. Eutrophication, sedimentation and terrestrialization will result as well as change in conveyance patterns and volume of basin below control water level with resulting stormwater management negative implications plus environmental destruction elaborated in detailed memo. Accelerated wear of preserve and lake banks around residential lots will result when combined with critter burrowing (as mentioned by new CBWCD district manager) will require sooner shorebank restoration with large special assessments not accounted for in HOA reserves. Mandatory stormwater 5-year recertification and modified environmental resource permit (Application No. 210405-5809) Clause 16 requirement will necessitate more frequent dredging not accounted for HOA reserves. It is also required to be compliant with the CBWCD maintenance agreement between Sierra Ranches and CBWCD and the executed conservation agreement with Broward EEPD that is part of the SFWMD Environmental resource permit. There are no spatterdocks in the executed conservation agreement approved species list. It is nuisance even though it is native and must be regularly maintained. It is highly flow attenuating, is proliferating exponentially as visible from drone footage at one year frequency between 2023 and 2024 and will contribute to significant detritus, leading to anoxic conditions, shallowing and other environmental harms (*Read Breaking Bad: Native Aquatic Plants Gone Rogue and the Invasive Species That Inspire Them by Lyn A. Gettys*).

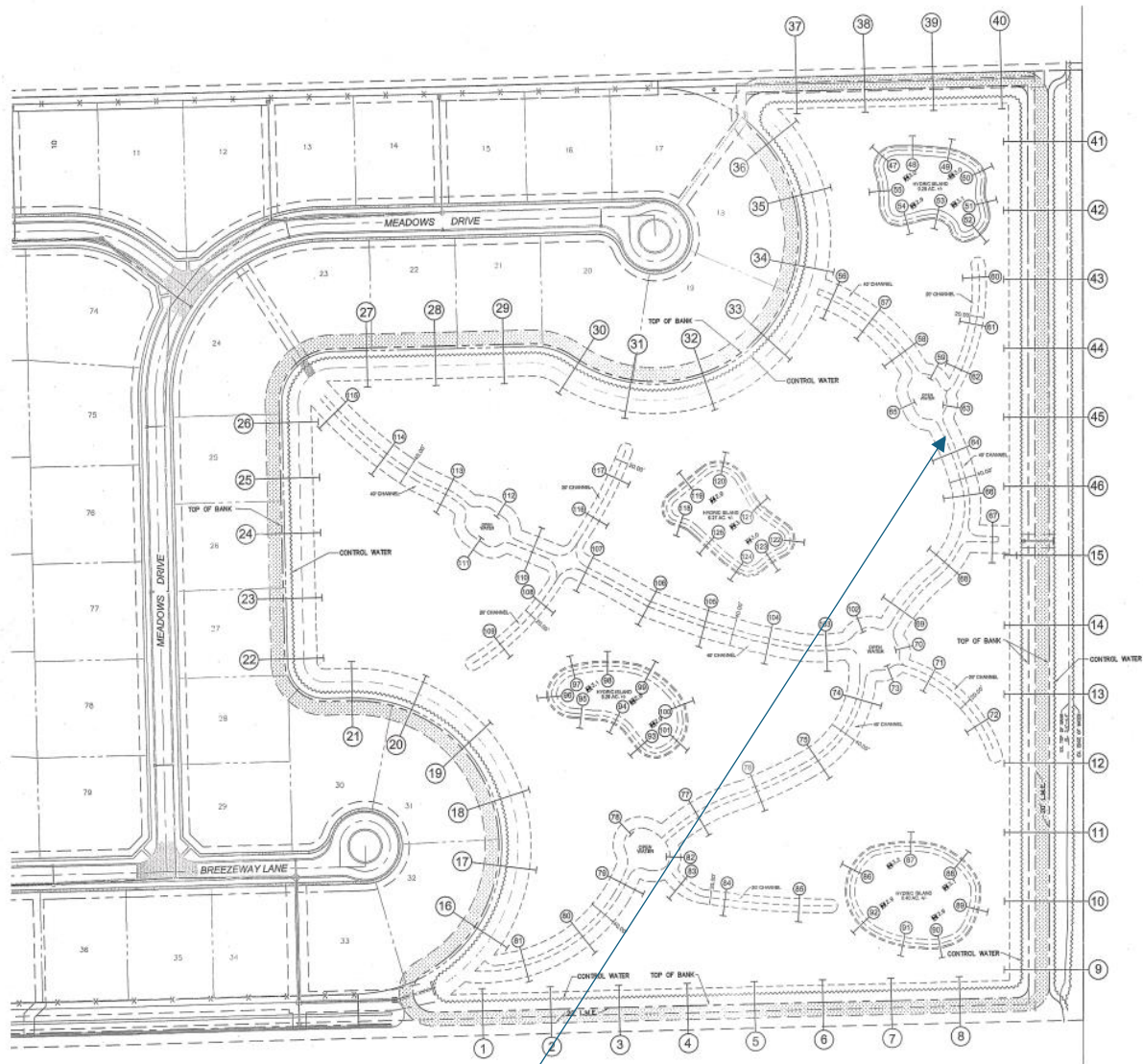
Sample builder's purported as-built sections



HAD EYE!
Lic



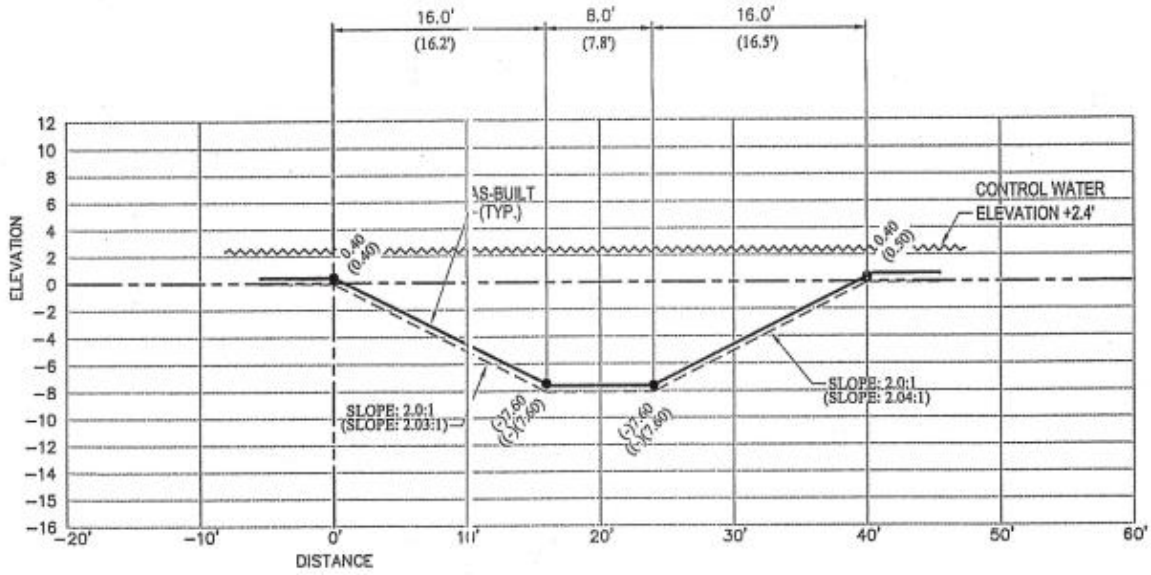
SECTION No. 69



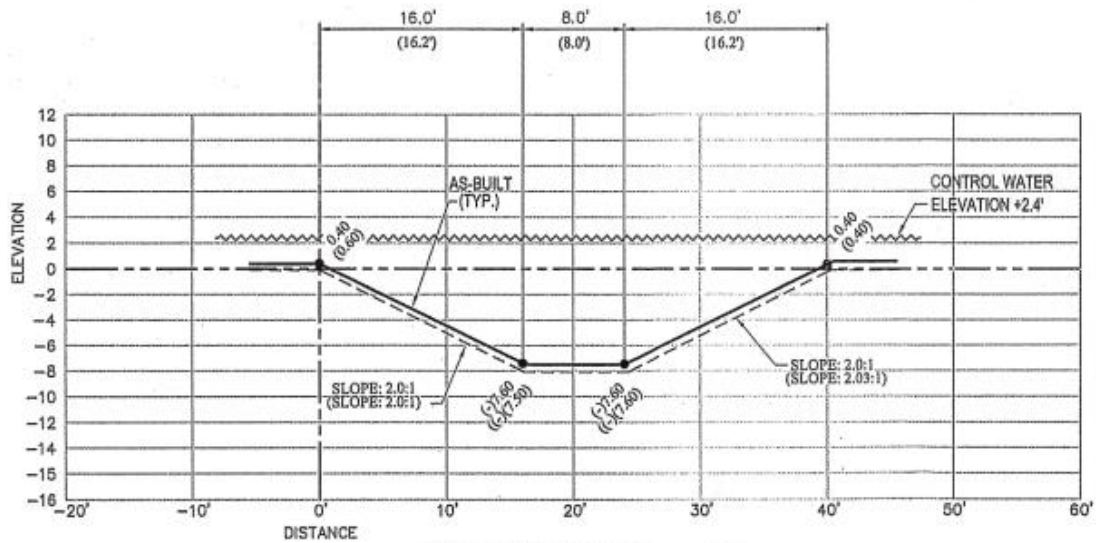
Shallowing or Blatant Misrepresentation in Deep Water Channel from Open Water Channel around residential lots (Schuman-Livengood lot intersection connection point) and connecting to the outfall

For sections 56-66 see drone video at: <https://vimeo.com/1008661134?share=copy#t=0>

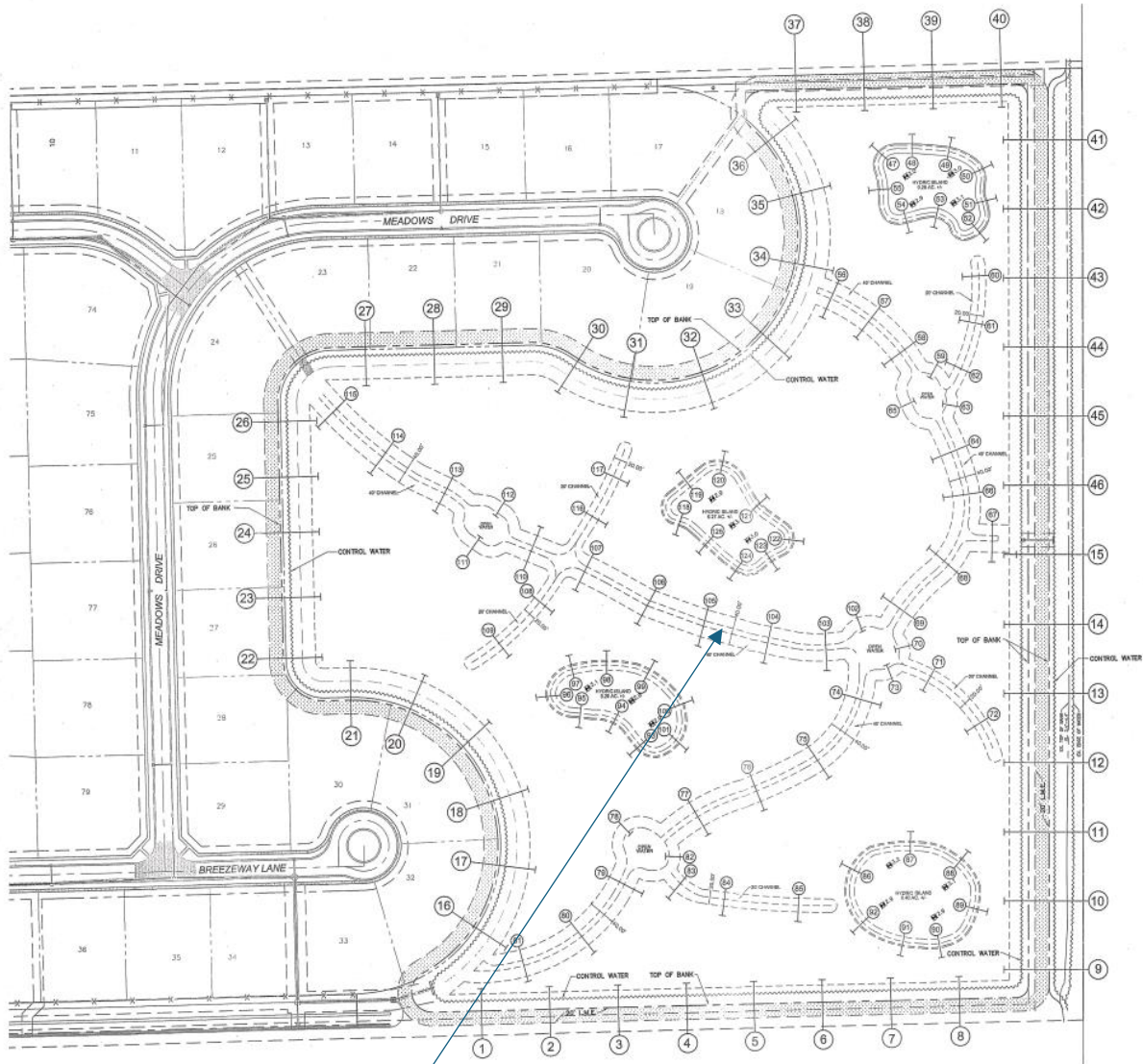
Sample builder's purported as-built sections



SECTION No. 56
40' CHANNEL



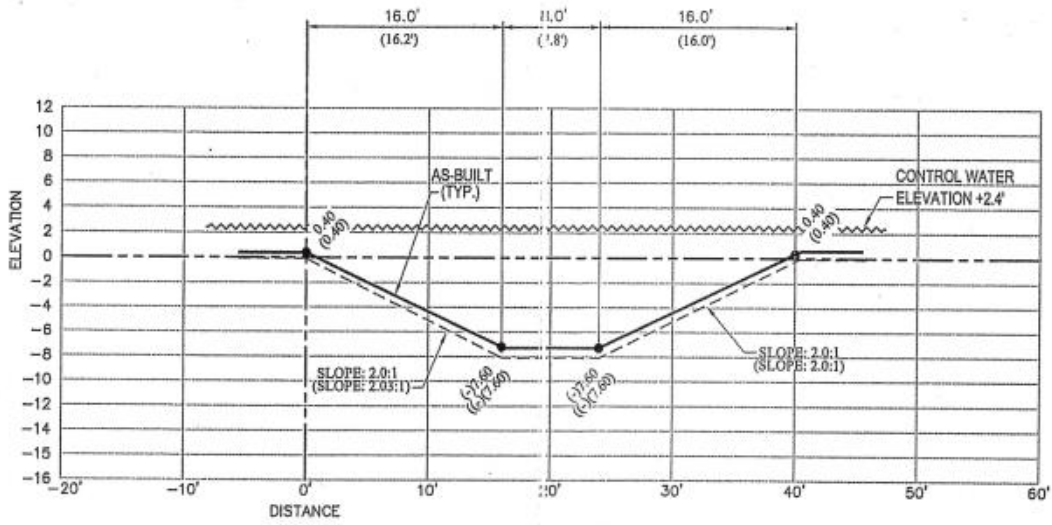
SECTION No. 66
40' CHANNEL



Shallowing or Blatant Misrepresentation in Deep Water Channel from Outfall to Boat Ramp

For Sections 103-115, see drone footage at: <https://vimeo.com/1008659620?share=copy#t=0>

Sample builder's purported as-built sections



SECTION No. 104
40' CHANNEL