

## CleanLine™ / ProLine™

Included with each 16'-0" (4.88m) section - 5 stakes.

Included with each 8'-0" (2.44m) section - 3 stakes.

(Recommended tools: A sharpened spade, 1-lb. hammer and hacksaw.)

### LANDSCAPE INSTALLATION

- 1.) Dig landscape trench 1" (25mm) deeper than the edging being set.
- 2.) Set the edging into the landscape trench with the top 1/2" (12.5mm) above what will become the compacted finish grade. (The installer can connect the adjacent sections of the edging prior to or after the sections are placed in the trench.) Where connections are needed on curves, the installer will find that connecting sections prior to installing will allow for faster completion.
- 3.) Start at the beginning of the bed area and begin driving the 12" (30.5cm) aluminum stakes.

**(NOTE: There are more loops per section than stakes. The additional loops are provided for great versatility of staking based on the design and application.)**

- 4.) Snap down the adjacent sections. **(Diagram A)**
- 5.) At the end of the bed area, cut the section to the desired length and stake down. Begin your next bed area with the remaining portion of the cut section. **(Diagram B)**

**FORMING ANGLES:** Cut the bottom of the edging halfway up using a hacksaw, lay on a hard surface placing a brick or 4 x 4 over the cut. Bend up to the desired angle using a hammer to stiffen angle. This forms a 1/2" radius on top avoiding sharp corners.

DIAGRAM A

**INTERLOCKING SNAP-DOWN SPLICING SYSTEM**  
Our stakeless connection system eliminates kinking and separation of sections, as well as upward movement of stakes common with other systems.

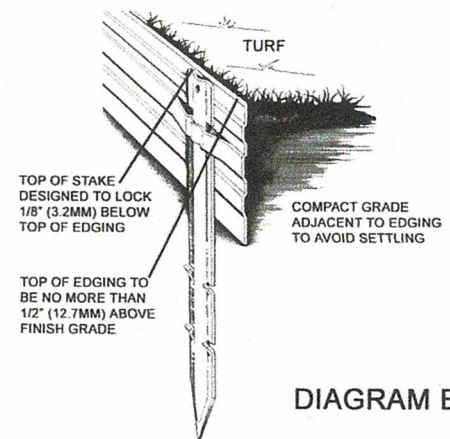
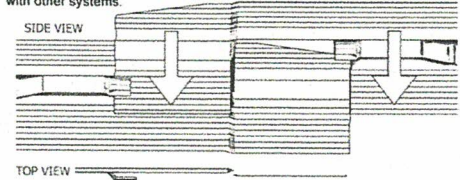


DIAGRAM B

## PermaStrip™

Included with each 16'-0" (4.88m) section - 8 stakes.

Included with each 8'-0" (2.44m) section - 3 stakes.

(Recommended tools: A sharpened spade, 1-lb. hammer and hacksaw.)

### LANDSCAPE INSTALLATION

- 1.) Dig landscape trench 1" (25mm) deeper than the edging being set.
- 2.) For straight runs, the installer may want to run a string to serve as a guide.
- 3.) Set the edging into the landscape trench with the top 1/2" (12.5mm) above what will become the compacted finish grade.
- 4.) The installer may want to install the entire straight run using stakes that are half driven in to "tack" the PermaStrip in place. This will allow the installer when standing back and viewing the installation to make minor adjustments to achieve a perfectly straight run.
- 5.) Start at the beginning of the bed area and drive the stakes into their locked position. **(Diagram A)**

- 6.) Connections are made using the 4" Sliding Connector **(Diagram B)**  
**NOTE:** When using a Weed Fabric under stone be sure to lap the fabric up the face of the PermaStrip. The weight of the stone will pull the fabric partially down PermaStrip leaving you sufficient coverage.

- 7.) At the end of the bed area, cut the section to the desired length and stake down. Begin your next bed area with the remaining portion of the cut section.
- 8.) **FORMING ANGLES:** "V-notch" and/or cut the bottom of the edging halfway up using a hacksaw. Bend up to the desired angle using a hammer to stiffen angle. This forms a 1/2" radius on top avoiding sharp corners.

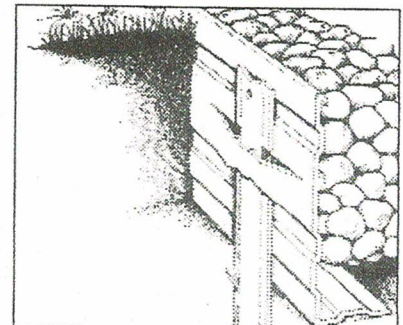


DIAGRAM A

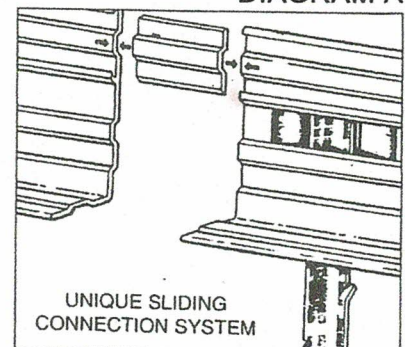


DIAGRAM B



**GENERAL WARRANTY INFORMATION  
DISCLAIMER/LIMITATION OF REMEDIES AND LIABILITY**

This warranty/disclaimer/limitation of remedies and liability applies to the edging and restraint products ("Product") manufactured and sold by Permaloc under the trade names AsphaltEdge, Athleledge, BrickBlock, CleanLine, CleanLine XL, DesignEdge, GeoEdge, PermaStrip, ProLine, ProSlide, ProSlide LT, StructurEdge, Profile and YardEdge. No person representing, or purporting to represent, Permaloc shall be entitled to waive or vary the terms set for therein, and any attempt to do so shall be void and of no effect.

**WARRANTY**

All Product comes with a warranty against manufacturer defect or failure for a period of fifteen years from the date of purchase. This warranty covers replacement or repair of the product upon manufacturer's acknowledgment of defect. This warranty does not cover miscellaneous expenses for removal, installation or down time, nor does it cover material, labor, or additional parts required for replacement or repair of damages caused by abuse (including fire or wreckage), misuse, neglect, or failure to follow manufacturer's installation instructions.

**DISCLAIMER**

PERMALOC MAKES NO WARRANTIES, EXPRESS OR IMPLIED, INCLUDING, BUT NOT LIMITED TO, ANY IMPLIED WARRANTY OF MERCHANTABILITY OR FITNESS FOR A PARTICULAR PURPOSE. User is responsible for determining whether the Product is fit for a particular purpose and suitable for user's method of application.

**LIMITATION OF REMEDIES AND LIABILITY**

If the Product is proved to be defective, THE EXCLUSIVE REMEDY, AT PERMALOC'S OPTION, SHALL BE TO REFUND THE PURCHASE PRICE OF OR TO REPAIR OR REPLACE THE DEFECTIVE PRODUCT. Permaloc shall not otherwise be liable for any loss or damages, whether direct, indirect, special, incidental, or consequential, regardless of the legal theory asserted, including negligence, warranty, or strict liability. If Permaloc shall elect to repair or replace the defective Product, or refund the purchase price, such election shall not be deemed an admission of liability. Any lawsuit or other legal action against Permaloc with regard to the Product must be brought in Ottawa County, Michigan, and Michigan law shall apply to all proceedings.

---

Distributed by Prime Supply 1

12146 Severn Way Riverside, CA 92503

Tel: 866-452-4525 Fax: 888-847-7756

Web: [www.1landscapesupply.com](http://www.1landscapesupply.com)