

LUKE DAY, 2024

Main Lodge, Iverson Park | May 19th | 11am- 3pm



FREE COMMUNITY APPRECIATION EVENT & FUNDRAISER

Join NextHome Priority in celebrating the Birthday of our favorite furry mascot, Luke, with our annual community appreciation event & fundraiser!

Enjoy tons of raffle baskets, free food, scavenger hunt, obstacle course, and more!

All proceeds benefit CAP Services, Family Crisis Center (FCC).

Purchase tickets for raffle baskets at the Main Lodge on the day of the event or at NextHome Priority, 20 Park Ridge Drive, Stevens Point, from May 20th to 24th, 9am-4pm.

Drawing for winners will be on May 28th!

For more information contact NextHome Priority at 715-997-9600, or marketing@nexthomepriority.com

You can also donate online: <https://capservices.org/how-to-help/donate/>
24/7 Crisis Hotline: 715-343-7125



*Transforming People
and Communities*



Scan me!

Thank you to our Sponsor



May 19th | Iverson Park | 11am- 3pm | Luke Day!

COMMUNITY APPRECIATION EVENT

DONATION INFORMATION

CAP Services Family Crisis Center: Supporting Victims, Sustaining Hope

In 2023, the CAP Services Family Crisis Center (FCC) served as a beacon of hope for 113 individuals who sought refuge in our shelter, providing not only a safe haven but also vital support services. Among them were 21 unaccompanied youth, aged 11-17, who found solace and security in our FCC Youth Shelter. Additionally, our 24/7 Crisis Line offered assistance to 1,955 callers seeking services, while our outreach teams made 4,162 meaningful contacts across Portage, Waupaca, and Waushara Counties.

Facing the Crisis: The Urgent Need for Support

As we look to the future, FCC stands at a critical juncture. Nationwide funding cuts, announced for 2024, pose a significant threat to our ability to continue providing essential services. Anticipating a staggering 76% reduction in funding from the federal grant Victims of Crime Act (VOCA), we find ourselves compelled to explore alternative avenues to sustain our operations.

Your Support Makes a Difference

Your generosity is crucial in safeguarding the lifeline we offer to victims of violence. By donating to the Family Crisis Center, you directly impact the lives of those in our community who are most vulnerable. Your contribution not only sustains our existing programs but also enables us to expand our outreach, education, and prevention efforts. Together, we can ensure that victims and their families have access to the resources and support they need to heal and thrive.

Take Action Today

As we navigate these uncertain times, we urge you to consider making a meaningful investment in the well-being of our community. Your support is not just a donation; it's a lifeline for those in crisis. Join us in our mission to create a safer, violence-free future for all. Together, we can make a difference.

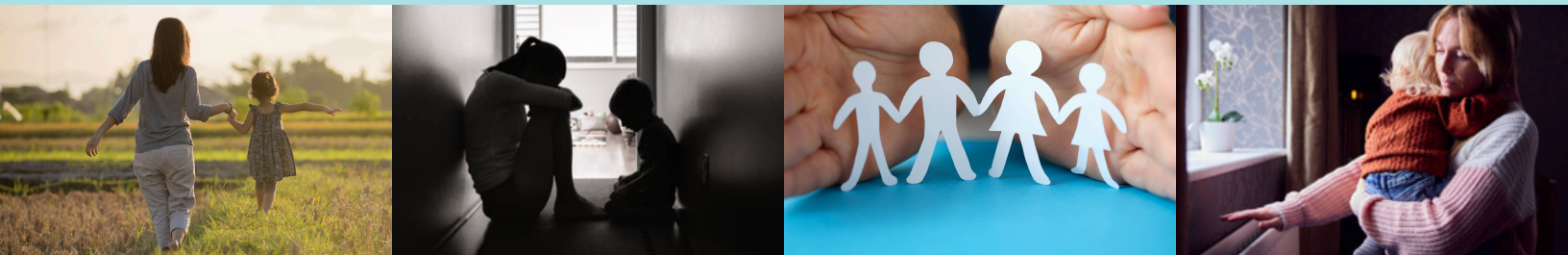
Donate at the event or online at: <https://capservices.org/how-to-help/donate/>

Please direct support to the Family Crisis Center on CAP SERVICES website from the dropdown options to donate. CAP has many programs and to ensure 100% of donations come to the FCC, donors need to select this option. If they do not specifically choose FCC, monies will go to CAP General fund.

Donate Directly: Family Crisis Center, 1616 W River Dr, Stevens Point WI 54481.

If you or someone you know needs assistance with sexual assault, domestic violence, or youth crisis, please reach out to the Crisis Hotline 24/7: 715-343-7125

Thank you for your compassion and commitment to ending violence in our community.



*Transforming People
and Communities*



For Additional Information | 715-997-9600 | marketing@nexthomepriority.com

24/7 Crisis Hotline: 715-343-7125 | Donate Online at: <https://capservices.org/how-to-help/donate/>

May 19th | Iverson Park | 11am- 3pm | Luke Day!

COMMUNITY APPRECIATION EVENT

SPONSORSHIP AVAILABILITY

PERKS INCLUDE	EVENT SPONSOR \$2,000	GOLD \$1,000 LIMIT 4	SILVER \$500
Non-Competing Sponsors Guaranteed	X		
Repeat Sponsor Opportunity	X		
Booth at the Event with Promotional Hand Out Opportunity & Banner Display	X	X	
Banner Displayed at the NextHome Office the week of Raffle Sales	X		
Print Campaign Includes: *If Confirmed by April 19th			
Logo on Post Card Mailer	X		
Business Mention on Post Card Mailer		X	X
Logo on Flyers distributed around Community	X		
Business Mention on Flyers distributed around Community		X	X
Social Media Campaign Includes:			
Social Media Post	X	X	X
Logo on Facebook Event Page Cover	X		
Business Mention on Facebook Event Page Cover		X	X
30 Second Video on Social Media Discussing Product & Services	X	X	
Facebook Live Mentions at the Event (2)	X		
Facebook Live Mentions at the Event (1)		X	
Email Marketing Campaign - Email Invite sent to over 1,500 people- **If Confirmed by our scheduled emails; 3/4, 5/2, and 5/16	X	X	X

All Proceeds to Benefit: CAP Services' Family Crisis Center (FCC)

Supporting Hope: Your Contribution Matters

Your support for NextHome Priority's fundraiser for CAP Services' Family Crisis Center (FCC) directly impacts lives. FCC offers vital support to individuals and families facing sexual assault, domestic violence, and youth crisis. Your generosity sustains essential services, ensuring no one faces adversity alone. Join us in making a difference.



Transforming People
and Communities



For Additional Information | 715-997-9600 | marketing@nexthomepriority.com

24/7 Crisis Hotline: 715-343-7125 | Donate Online at: <https://capservices.org/how-to-help/donate/>