

Introduction – Installation - Warranty



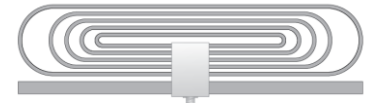
www.TVxf-Antenna.com

The TVxf-HDTV antenna has been designed to receive over-the-air VHF and UHF television broadcast signals. This antenna is capable of receiving Digital, Analog, 720P, 1080i High Definition TV (HDTV), and the latest 4K Ultra HD TV signals.

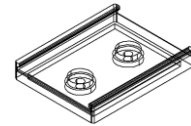
- **Easy to Install.**
- **Works with new and old TV.**
- **Can be installed indoor and outdoor.**
- **Does NOT require batteries, AC or DC power.**
- **Does NOT require internet connection to work.**
- **No Monthly fees or charges.**

TVxf® is registered trade mark of the TVxf LLC. The design of this product and its components are covered by one or more copyrights, patents or patents are pending.

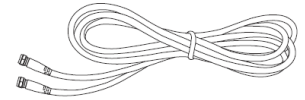
Antenna.



Wall/post Mounting Plate



16 ft. long 75 Ohm coaxial cable



(2) #4 pan head screws



(2) Push Pins



Installing the Antenna

The TV signal strength depends on the location, direction, and the distance from the TV station's transmitting antenna. The indoor installations face additional challenges, such as closely spaced metal studs in the walls, the metal building, metal screens, which prevent or degrade the signal reaching the indoor. The outdoor installation generally provides much better signal quality, but very long coaxial cables induce signal attenuation. When installed outdoor use a good quality, a new RG-6 coaxial cable of the shortest length possible. The signal splitters also create some losses, therefore when trying first time, it will be the best to use a direct connection between this antenna and the TV. For indoor installation:

1. Attach one end of the enclosed wire to the TV set, and the other end to the Antenna. (Figure 1)
2. Fully insert push pins and use the front plastic of the Push Pins to hang the antenna and try various locations and directions at least 6 ft. above the floor. Don't hold the antenna in your hand to test.
3. Once a good location and direction has been found, attach the wall/post mounting plate using the two #4 screws.
4. Slide the antenna onto the wall/post mounting plate from the top. Place your thumb below the wall plate to support while pushing antenna from the top. (Figure 2.)
5. Program your TV by selecting Menu or Source, and choose Setup/Air/Antenna to scan and receive broadcast TV.
6. Seek qualified professional's help for outdoor installation.

Lightning: For added protection for electronic devices during a lightning storm or when left unattended or unused for a long period of time, please unplug the antenna, this will prevent damage to the connected electronic devices.

Power Lines: An outside antenna system should not be located close to the power lines or where it can fall into the electrically charged circuits. When installing an outdoor antenna system, extreme care should be taken to keep from touching power lines or circuits as contact with them might be fatal. Keep the distance between the power lines and the antenna and its mounting structure at least two times the combine height of the antenna and its mounting structure.

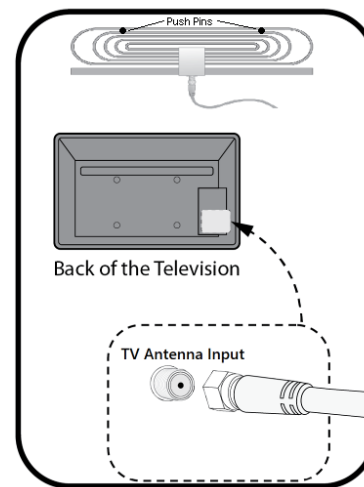


Figure 1.

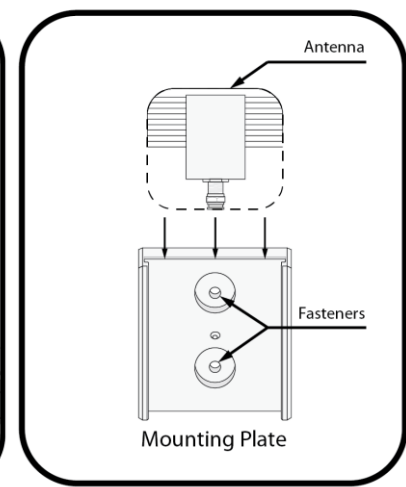


Figure 2.

Grounding: The antenna and its mounting structure should be grounded in accordance with NEC electrical code, all state and local code requirements. The acceptable building grounding locations are: The building grounding electrode as covered in 250.50 of the NEC: an 8-ft grounding rod driven into the ground can be used as long as it is connected to the building ground by #6 or larger bonding wire, Grounded interior metal water piping system, within 5ft. from its point of entrance to the building.

Service equipment enclosure, the metal enclosure of the power service grounding electrode.

LIMITED WARRANTY: TVxf LLC Guarantee that the product sold by us will be free from defects in material and workmanship for a period of one (1) year from date of original purchase. (Warranty Period) We will repair or replace, at our option, any product or part that is defective in material or workmanship without charge if the product is returned to us with a dated proof of purchase of within the Warranty Period. To obtain warranty service and Return Merchandise Authorization Number (RMA#); please contact the Customer Service at (786)536-6636. This warranty shall not apply to any product which has been subject to misuse, negligence or accident, or which has been modified or repaired by unauthorized persons. This warranty is valid for original purchaser of the product of an authorized sales outlet. IN NO EVENT SHALL TVxf LLC. SHALL BE LIABLE FOR ANY DIRECT, INDIRECT, INCIDENTAL OR CONSEQUENTIAL DAMAGES FROM THE USE OF THIS PRODUCT, THIS DISCLAIMER APPLIES BOTH DURING AND AFTER THE TERM OF THIS WARRANTY.

