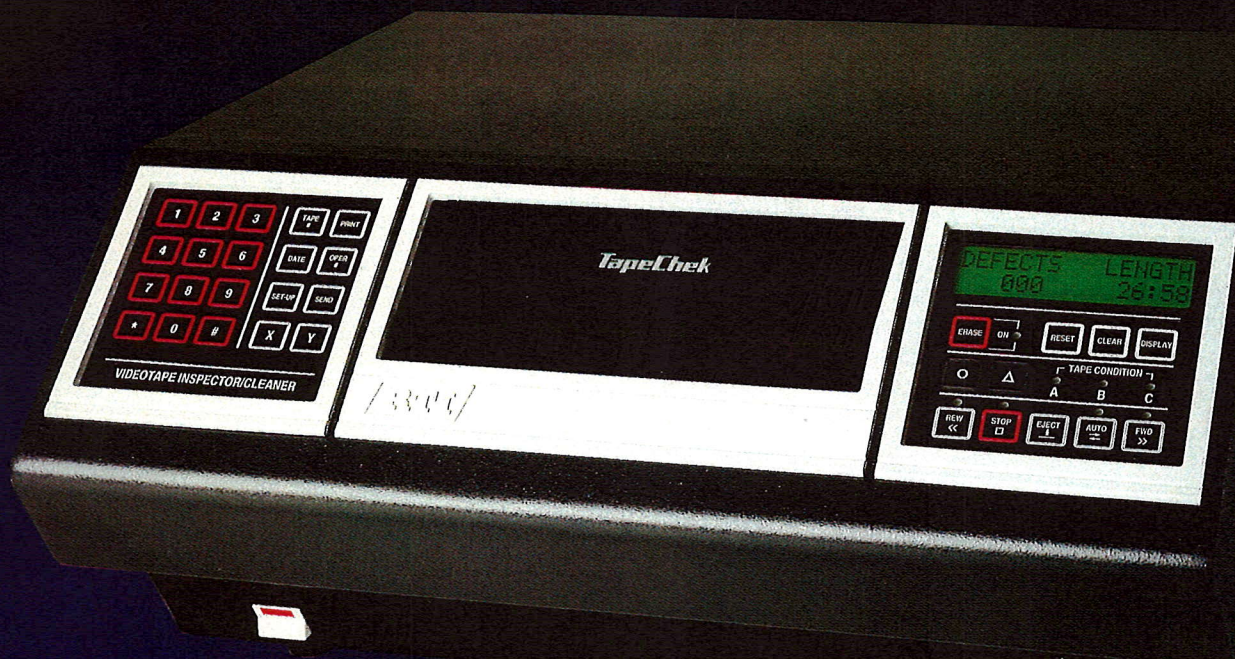


# TapeChek

Professional VHS Videotape  
Cleaner/Inspector/Rewinder



## **CLEANS YOUR TAPES...**

Makes Them

Last Longer...

Play Better!

Reduces VCR Maintenance!

## **INSPECTS YOUR TAPES...**

Finds Damage So You Can...

Fix Them...

Retire Them...

or Replace Them!

[www.rtico.com](http://www.rtico.com)

Products for Videotape Care from

**RTI**

Research  
Technology  
International



# For All Professional VHS V

## EDUCATIONAL MEDIA & TECHNOLOGY CENTERS.

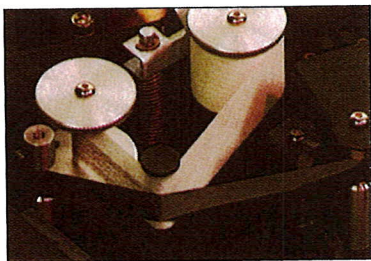
Extend the useful life of your tapes. Provide your students and teachers with an extra margin of quality. Circulate clean tapes. Inspect the quality of tapes. Why spend hours tediously viewing tapes to find the damaged ones? TapeChek does it for you quickly and automatically!

**PUBLIC LIBRARIES.** Give your patrons the quality they deserve. Extend the useful life of your tapes. Add new titles rather than replacements...Be confident you are circulating only good tapes. Verify patron complaints immediately. Know which tapes are damaged and remove them from circulation. TapeChek models are fast and simple to operate...just insert the tape and press a button!

## TapeChek 400 Series VHS Videotape Cleaner/Inspectors

TOP-OF-THE-LINE MODELS 480 AND 490 INCLUDE 3-CHANNEL DETECTION SYSTEM, COMPREHENSIVE TAPE INFORMATION DISPLAY AND PRINTER INTERFACE

- **Cleans...** specially formulated cleaning tissue gently wipes away dirt and other debris from the tape. Eliminates temporary dropouts and helps to keep VCRs clean.
- **Polishes...** sapphire burnisher removes loose oxide, the number one cause of dropouts. Tape surface is polished for improved performance.
- **Finds Damage...** opto-electronic detection system locates edge damage, wrinkles and creases in the tape without erasure.
- **Simple to Operate...** tapes are cleaned, inspected for damage and rewound automatically.
- **Fast...** inspect, clean and rewind a two-hour tape in less than 2 minutes.
- **Easy to Use...** programmable "A-B-C" indicators provide at-a-glance "grading" of tape condition.
- **Convenient...** front-loading mechanism is easy to use and automatically ejects the tape after the inspection and cleaning cycle is finished.
- **Safe...** microprocessor electronics control speed and tension for safe, gentle tape handling.
- **Comprehensive Tape Information Display...** provides reports of defect data and tape length, plus diagnostics and setup information (Displays 1 through 5).
- **Data Entry Keypad...** permits entry of date, tape, and operator number for printed reports.
- **Printer Output...** provides reports of tape condition and damage locations.
- **Erase Option...** lets you erase tapes before reusing them. Provides complete full-width degaussing. TapeChek restores tape to original blank condition. You can recycle tapes with confidence!
- **Defect Search Option...** after inspection, at the press of a button, TapeChek will fast forward to each damaged section in turn, so you can visually inspect the tape damage.
- **Protects VCRs...** when tapes are played, they shed oxide and become dirty. Debris accumulates on VCR heads, pulleys and other components, which can cause permanent damage and expensive repairs. TapeChek cleans tapes and protects your VCRs.



### CLEANING AND BURNISHING

The TapeChek cleaning and burnishing system extends the life of your tapes. Improves tape performance. Minimizes VCR maintenance. Uses a special automatic advancing cleaning tissue. Has a "Replace Tissue" warning system.



### INSPECTION REPORT CARDS

Continuous form computer cards for printing TapeChek inspection data. Sized to conveniently fit into cassette storage box. Provides permanent record of TapeChek data.

TapeChek, Cleaning and Inspection Systems

--- TAPECHEK 400 PHYSICAL DEFECT BEFORE ---

TAPE #115224470

CONDITION	"A"	LENGTH	ERR	DATE	OPR	TOTAL
CONTROL	2	2		05/23	024	05
VIDEO	2					02
ACTED	1					01

MINUTES 2 10 20 30 40 50 60 70 80 90 100 110 120

TOTAL LOCATIONS WITH PHYSICAL DEFECTS = 008  
SEE VALUES ARE: A=05, B=01, C=10      \*1\* = MORE THAN 9 DEFECTS



# deotape Users Including...

**VIDEO RENTAL STORES.** When prices and selection are about equal... *quality* makes the difference! With TapeChek, you can extend the useful rental life of your tapes many times. Eliminate complaints and refunds. Check your new tapes before the warranty expires. Since half of customer tape complaints are really problems with their VCRs, TapeChek separates good tapes from bad ones.

**SECURITY & SURVEILLANCE SYSTEMS.** Large numbers of VHS videotapes are used for security and surveillance recording in banks, government facilities, casinos, law enforcement, and for other applications. By recycling tapes with TapeChek, you can reduce your videotape expenditures while you prevent the risk of losing vital evidence due to using damaged or defective videotapes. Greatly reduces VCR maintenance.

## COMPREHENSIVE TAPE INFORMATION DISPLAY

Models 480 and 490 are equipped with a comprehensive Tape Information Display. An easy-to-read back-lighted liquid crystal readout displays all of this information and more:

Display 1

```

DEFFECTS  LENGTH
 018      90:24
    
```

Total count of damage plus tape length in minutes and seconds

Display 2

```

DEFFECTS/ 15 MIN.
5-0-1-*0-0-0-0
    
```

Number of damaged sections in each 15 minute segment of the tape

Display 3

```

CTL VID AUD TOT
003 009 011 018
    
```

Number of damaged sections in control, video and audio areas of the tape, plus total

Display 4

```

C-V-A  LOCATION
  █     59:41
    
```

Damage location report shows damage area (control, video, audio) and exact location (minutes/seconds)

Display 5

```

ENTER TAPE NO:
00015648
    
```

Status display. Machine diagnostics, setup displays, warnings and other informational messages



TapeChek Models  
Update Both VHS & S-VHS Tapes

## INSPECTS

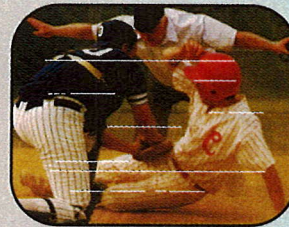
Advanced opto-electronic damage detection is fast, accurate and easy to use. All TapeChek 400 series models automatically grade your tape as "A, B, or C" quality, so you know the condition of your tapes before you use them.



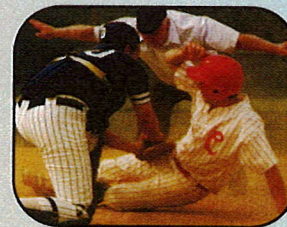
TapeChek automatically finds physical tape damage that can cause picture breakup.

## CLEANS AND POLISHES

Specially formulated cleaning tissue gently removes loose dirt, oxide and other debris to eliminate temporary dropouts. The TapeChek ultra-precision sapphire burnishing system polishes the tape for improved performance. Cleaning your videotapes protects VCRs from dirt, oxide buildup and head clogs. Moreover, TapeChek uses no harmful chemicals.



**BEFORE TAPECHEK**  
Loose oxide, dust and dirt on the tape causes distracting dropouts in both video and audio.



**AFTER TAPECHEK**  
Videotape is cleaned and polished to "like-new" condition. With TapeChek, you can maintain the quality of your tapes for years to come.

## ERASE OPTION

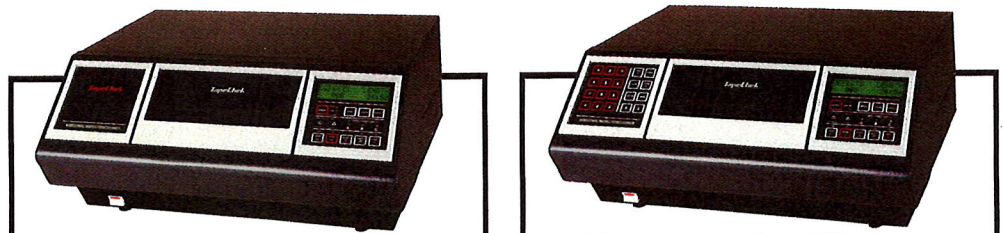


Erase your tapes to "like-new" condition at the press of a button. Safety interlock prevents accidental tape erasure.



# TapeChek

## 400 SERIES COMPARISON CHART



TapeChek Model:	460	470	480	490
Cleaning Tissue/Burnishing	Yes	Yes	Yes	Yes
Speed (relative to standard play)*	45X	75X	45X	80X
Display Formats	2	2	6	6
Diagnostics Displays	No	No	Yes	Yes
Total Defect Counter	Yes	Yes	Yes	Yes
Tape Length Counter	Yes	Yes	Yes	Yes
Damaged Section Display	Yes	Yes	Yes	Yes
Defect Location Display	No	No	Yes	Yes
Number of Defect Channels	2	2	3	3
"A-B-C" Grade Indicators	Preset	Preset	Programmable	Programmable
Data Entry Keypad	No	No	Yes	Yes
Printer Output	Option	Option	Yes	Yes
Defect Search	N/A	N/A	N/A	Option
Erase Function	N/A	N/A	Option	Option
Catalog Numbers	10941	10942	10943	10944
Dimensions: (W,D,H)	20" x 18" x 8½" (10.8 x 45.7 x 21.6 cm)			
Weight:	40 lbs. (18.5 Kg)			
Operating Voltages:	117 VAC, 60 Hz Standard (100/220/240 VAC, 50 Hz or 60 Hz Optional)			

\*PAL Speeds: 64X, 107X, and 114X standard play.

### OPTIONS:

**Defect Search.** Catalog Number 10956

**Erase Option.** Completely erases tape while cleaning and rewinding. Catalog Number 10931

**Printer Output Option.** For Models 460 and 470. Catalog Number 10933

**Dust Cover.** Protects your TapeChek unit from dust and dirt. Catalog Number 10939

### SUPPLIES:

**Cleaning Tissues.** Box (12). Catalog Number 10964BOX

**Sapphire Burnisher.** Catalog Number 10959

**Inspection Report Cards.** Pkg. 500. Catalog Number 10929

### EXPORT OPTIONS:

**Export Voltage Option.** Catalog Number 10937

**PAL Timing Option.** Catalog Number 10936

### Also Available...

#### TapeChek VideoPRO High Speed Professional VHS Videotape Cleaner/Conditioner/Rewinder



Cleans, conditions and rewinds a T-120 tape in as little as 2 minutes...restoring it to "like-new" condition. Catalog Number 10755  
VideoPRO with optional erase. Catalog Number 10947AE

- **Cleans...**Specially formulated cleaning tissue gently wipes away dirt, dust, loose oxide, hair and other contaminants that can make the picture look bad...sound distorted.
- **Conditions...**Precision sapphire burnisher polishes the tape surface for better performance.
- **Simple to Operate...**Tapes are cleaned, conditioned and rewound automatically.
- **Fast...**Operates at 75 times standard play speed. Cleans, conditions and rewinds a T-120 tape in as little as 2 minutes.
- **Safe...**Proven method used worldwide! Uses no toxic chemicals. Microprocessor electronics control speed and tension for gentle, safe tape handling.
- **Heavy-Duty...**No flimsy plastic parts. All solid state electronics. Direct drive motors--no belts. All components rated for continuous operation.
- **Optional Erase...**Completely erases tape while cleaning and rewinding.

RTI also offers TapeChek Cleaner/Evaluators for Betacam, 3/4" U-matic, 1", DVCPRO/DVCAM and other videotape formats, DiscChek Inspector/Rejuvenators for all optical disc formats... and a full line of videotape degaussers for metal and oxide tapes.

For prices **CALL TOLL FREE 800-323-7520**



Corporate Headquarters:

4700 Chase Avenue, Lincolnwood, Illinois 60712-1689 U.S.A.

Phone: 847-677-3000 FAX: 847-677-1311 or 800-784-6733 Email: sales@rtico.com

**Website: www.rtico.com**

European Office:

6 Swan Wharf

Waterloo Road, Uxbridge UB8, 2RA England

Phone: 44-(0)-7000-478485 FAX: 44-(0)-1895-274692 Email: inbox@rtiuk.co.uk