

The **RTI** Group:

Standard machine specification

Designed and built to suit a wide variety of speeds and film stock, and to suit individual customers requirements



General specification

▶ 316 Stainless Steel construction throughout or titanium where necessary

▶ Demand friction drive

▶ Spring centred spools

▶ Circuit breakers throughout for protection

▶ All idler spools ball-raced

▶ Film retainers on all lower spools

▶ Simple in design, construction and maintenance

▶ Non emulsion contact prior to developer

Calder film processing equipment

Cassette

- ▶ Stainless steel construction
- ▶ 1200 or 2400 ft capacity
- ▶ Rotation indicator



Cassette Mounting Unit

- ▶ Stainless steel construction
- ▶ Leader dispenser
- ▶ Film end detector
- ▶ Stop/Start for machine drive
- ▶ Stop/Start for machine pacer
- ▶ Stop/Start for input pacer
- ▶ Warning light panel
- ▶ Elevator position light panel
- ▶ Alarm cut-out button
- ▶ Static Eliminator (Statstrip)

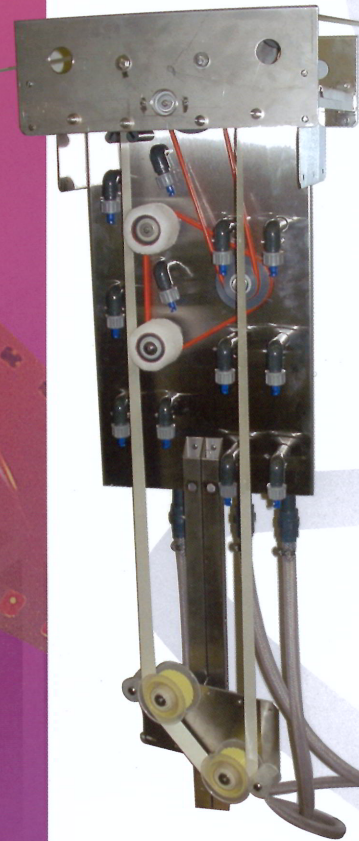
Feed-on elevator

- ▶ Stainless Steel construction
- ▶ 1 minute minimum changeover time
- ▶ Input pacer controlled by elevator position with soft start
- ▶ Film break warning
- ▶ Elevator break warning
- ▶ Elevator rise warning
- ▶ Machine cut-out switch
- ▶ All spools ball-raced



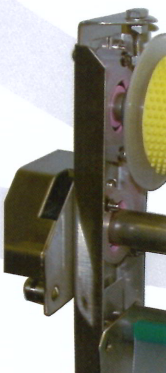
Cassette Mounting Unit

Feed-on Elevator



Wet S

- ▶ Removal tension c
- ▶ Diablo or bar ty
- ▶ Stainless necessary
- ▶ Urethane (combina
- ▶ Independ (through
- ▶ Backing r
- ▶ Wash fee overflow:
- ▶ Wash flo drive
- ▶ Rotary b to dryer
- ▶ Rack Sup





ction

film racks with adjusters for
trol

atbed spools with soft touch

el tanks or titanium where

ipers between process stages
n fixed/sprung)

t agitation of developer
ay bars)

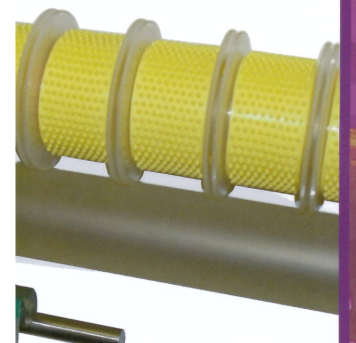
oval unit - 2 stage - rinse/buff

/ spray bars at tank top with
om bottom

solenoid actuated by the main

ar or vacuum squeegee prior

rt Rail



Wet Section



Drying cabinet

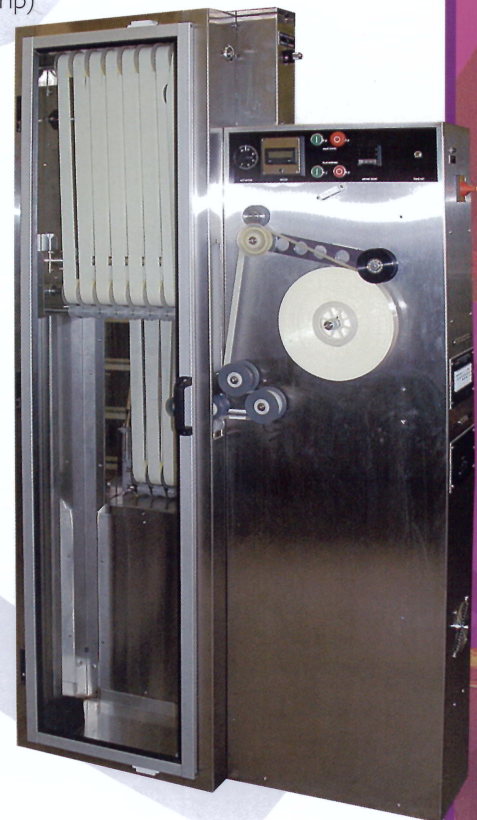
- ▶ Stainless Steel construction
- ▶ Impinged air drying
- ▶ Removable racks
- ▶ Automatic temperature control
- ▶ Easily removable impingement panels
- ▶ Manual humidity control
- ▶ Filtered input air
- ▶ Access doors both sides

Feed-out elevator

- ▶ Stainless Steel construction
- ▶ 1 minute minimum change over time
- ▶ Machine pacer controlled by electro-magnetic clutch
- ▶ Machine pacer override system
- ▶ All spools ball-raced
- ▶ Carriage descend warning
- ▶ Machine pacer cut-out
- ▶ Static Eliminator (Statstrip)

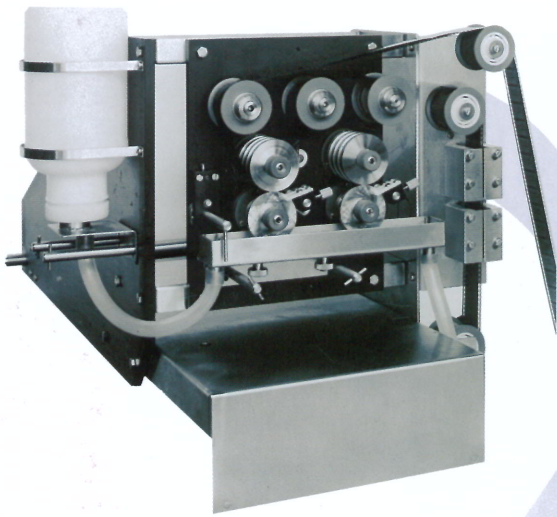
Take-up unit & control panel

- ▶ Stainless Steel construction
- ▶ Torque motor take-up controlled by elevator position with soft start
- ▶ Non-return roller
- ▶ Stop/Start buttons for machine drive
- ▶ Stop/Start buttons for machine pacer
- ▶ Take-up On/Off switch
- ▶ Variable speed ac main drive motor with inverter control
- ▶ Digital speed indication
- ▶ Lockable speed control potentiometer
- ▶ Soft start on Main Drive Motor



Drying Cabinet

Feed-out Elevator



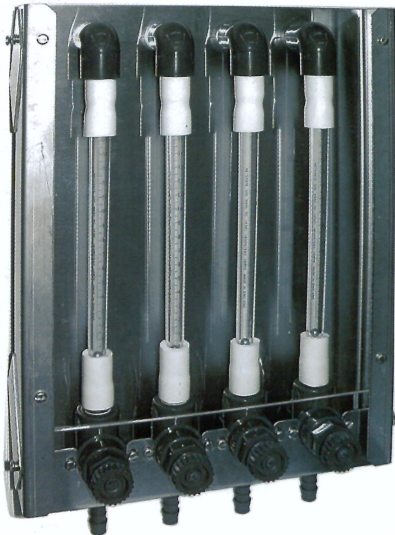
Sound track applicator

- ▶ Anodised aluminium main plate
- ▶ Stainless steel bearings
- ▶ Film drive
- ▶ Adjustable wiper blades
- ▶ Adjustable comb
- ▶ Quick lift-off arm
- ▶ Micrometer adjustment for bead
- ▶ Single or twin heads
- ▶ Chicken feed solution systems



Chemical control unit

- ▶ Stainless Steel construction
- ▶ Magnetic drive pumps
- ▶ Digital proportional temperature control and display with triac output
- ▶ Circulation, filtration and temperature control of all solutions
- ▶ Circulation failure warning system
- ▶ Overheat protection for heat exchangers
- ▶ Heating by removable cartridge heaters
- ▶ Plug-in electrical components
- ▶ Sample taps for all solutions



Replenisher unit

- ▶ Stainless Steel construction
- ▶ Metering pumps or flowmeter as desired
- ▶ Tank level & calibration panel supplied with metering pumps



Northbrook, IL, 60062, USA
Phone: +1-224-282-8985



Sekocin Stary, (Warsaw), 05090, Poland
Phone: +48-662-042-079

E-mail: info@mmtfilm.com

Calder film processing equipment