



New Range of the world's leading Ultrasonic Motion Picture Film Cleaning Machines



Media Migration Technology

Northbrook, IL, 60062, USA
Phone: +1-224-282-8985
E-mail: info@mmtfilm.com

MMT International

Aleja Krakowska 100A,
05-090 Sekocin Stary, Warsaw, Poland
Tel.: +48 662 042 079
E-mail: info@mmtfil.com

www.mmtfilm.com

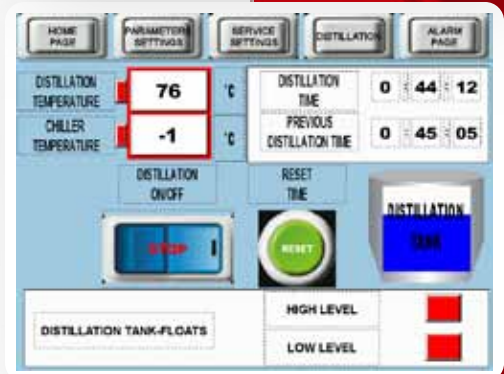
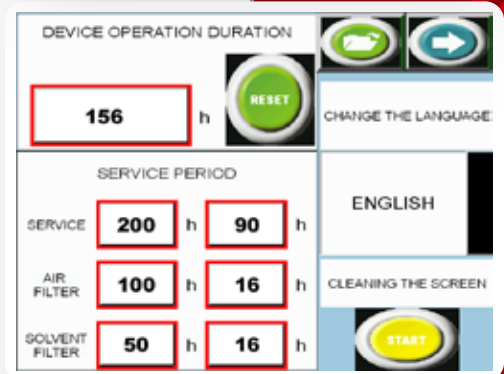
Continuing the fine traditions of Lipsner Smith, the very latest, best performing Ultrasonic Film Cleaning machines are here.

Designed by an award winning team, the models CF9300P and CF9400HFE make the very best of their respective approved film cleaning solvents. They use the latest technology to provide the most environmental, safest and efficient devices for the Motion Picture Film Industry.

Building on the proven, award winning Lipsner Smith models, the new versions feature many improvements and updates.



- Variable Speed control including new, lower film transport speeds, if required, for very delicate archive material. Selectable by the operator.
- Adjustable film tensions
- Internal Fluid Wastage Protection, reduces risk of expensive downtime solvent evaporation
- Modern, reliable electronics
- Supply drum empty indicator
- Unique operator-adjustable film wrap through cleaning buffers
- Shorter downtime for solvent distillation recycling
- Glass porthole to film passing through the cleaning buffers during the cleaning cycle



	TEMPERATURE	SETPOINT	MIN. READY	MEASURE	WARNING
Cleaning	°C	27	24	31	43
Drying	°C	75	55	87	130
Chiller	°C	-2	0	1	5
Distillation	°C	50	70	26	80

Touch Screen Features

- All the benefits of connectivity
- Remote diagnostics
- Extensive machine usage & performance data readily available
- Simplified electronic components and controls
- Service machine warnings
- Solvent consumption data
- Remote App available to control and monitor the machine
- Feature Upgrades available to download
- License access fees included in machine price



Available options:

- Spare parts kit
- Customized consumables kit
- Film gauges available:
 - 8 mm/Super 8
 - 9.5 mm
 - 17.5 mm
 - 22 mm
 - 28 mm
 - 65 & 70 mm



CF9300P



CF9400HFE





Specifications



Model Catalog Number	11421	11420
Film Cleaning Solvent	Perchloroethylene	Hydrofluroether (HFE)
Cleaning	Ultrasonic Cavitation with immersed, adjustable wrap, rotary dacron buffers	Ultrasonic Cavitation with immersed, adjustable wrap, rotary dacron buffers
Film Drying	Non-evaporative with high pressure, low volume. No physical contact with film	Non-evaporative with high pressure, low volume. No physical contact with film
Venting of vapor to outside wall required	Yes	No
Film Types	16mm & 35mm dual gauge Other film gauges available	16mm & 35mm dual gauge Other film gauges available
Internal Solvent Recycling	Virtually Closed System with automatic recycling of vapor and internal distillation/chemical correction of dirty liquid.	Closed System with automatic recycling of vapor and internal distillation/chemical correction of dirty liquid.
Solvent Distillation Time	90 minutes	45 minutes
Cleaning/Distillation Tanks	13.25 / 17 litres 3.50 / 4.50 US Gallons	13.25 / 17 litres 3.50 / 4.50 US Gallons
Film Capacity	Up to 4,000ft (1219m)	Up to 4,000ft (1219m)
Film Transport	via Soft Touch Capstan	via Soft Touch Capstan
Film Speed	Adustable from 0 fpm to 100fpm (0 mpm to 30mpm)	Adustable from 0 fpm to 230fpm (0 mpm to 70mpm)
Cleaning Buffers	Dacron - Removeable without tools	Dacron - Removeable without tools
Machine Controls	7" Color Touch Screen with data reporting and remote diagnostics	7" Color Touch Screen with data reporting and remote diagnostics
Film Tension	Adjustable	Adjustable
Ultrasonics	600W generator, 30Khz 8 transducers	600W generator, 30Kz 8 transducers
Vapor Exhaust	From top, 4" (10cm) duct.	No dedicated exhaust
Power Requirements	220 volt, 50Hz or 220v, 60Hz Single phase, 30 amps	220 volt, 50Hz or 220v, 60Hz Single phase, 30 amps
Weight Dimensions	430Kg / 950 Lbs 112 x 84 x 196 cm High (44" x 33" x 77" High)	430Kg / 950 Lbs 112 x 84 x 196 cm High (44" x 33" x 77" High)
Shipping Information	550Kg / 1200 lbs 143 x 97 x 225 cm High (50" x 40" x 83" High)	550Kg / 1200 lbs 143 x 97 x 225 cm High (50" x 40" x 83" High)