

Product Catalog

2026 HOMES





Overcloud Kitchen & Bath combines a long tradition of craftsmanship with refined modern design.

Founded by a second-generation manufacturer, Overcloud grew from supplying major brands into a direct-to-customer cabinetry company focused on quality, precision, and lasting value.

We believe cabinetry should be more than beautiful — it should be *solidly built, thoughtfully designed, and made to last.*

Every Overcloud product reflects our commitment to honest materials, structural integrity, and quiet elegance.

Solid Craft · Quiet Strength

Table of Contents

03 About

- About Us
- Door Styles
- Product Features

09 Product Details

115 Cabinets

- Base Cabinet
- Wall Cabinet
- Vanities
- Accessories

127 Cabinet Handles



About Us

Built on 33+ Years of Cabinet Manufacturing Experience.

Overcloud Kitchen & Bath is a professional manufacturer of premium kitchen and bath cabinetry serving the North American market. Backed by a manufacturing group established in 1993, we bring decades of experience in wood product manufacturing and cabinetry production.

With facilities in China and Malaysia, advanced equipment from global brands such as Cefla and Homag, and strict SOP-based production standards, we deliver consistent quality and reliable performance. All materials meet CARB P2 and EPA standards, supporting safe and sustainable products for the U.S. market.

Today, our group employs around 1,000 professionals worldwide, providing dependable cabinetry solutions to partners across North America.



China Manufacturing

Founded in 1993, our China factory has established a strong legacy in thermofoil panel manufacturing. Since 2012, the group has served as a trusted OEM partner to leading American cabinet brands.

Malaysia Factory

Established in 2019, our Malaysia facility produces high-quality kitchen and bath cabinetry for the North American market. Advanced equipment and skilled teams ensure precision, consistent finishes, and reliable performance.



Global Expansion

The Malaysia factory adds to our international manufacturing capabilities. Specialized lines and strict SOPs guarantee flexible production while maintaining consistent quality.

Door Styles

Colours and Profiles

Frameless Collection



CREAM WHITE
Flat



WARM OAK
Flat



TIFFANY BLUE
Flat



CREAM WHITE
Slim Shaker



WARM OAK
Slim Shaker



METAL BLACK
Slim Shaker



GRASS GREEN
Intricate French

Framed Collection



STAIN BIRCH
Stained



STAIN OAK
Stained



CHAMPAGNE GREY
Painted



MATT BLACK
Painted



SNOW WHITE
Painted

Product Features

Materials



All Wood Construction

Metal Clip Lock Assemble System

Solid Wood Strip Door Frame and Face Frame

A Grade Plywood Box Construction

Finished Exterior and Natural Birch Veneered Interior Dove Tail

All Birch Wood Full Extension Drawers

DTC® / BLUM® / Hettich® Six-way Adjustable Hinges

DTC® / BLUM® / Hettich® Under-mount Heavy-duty Soft Close Drawer Glides

Clear Glass Doors for Wall Cabinets

Sherwin-Williams / AkzonNobel Face Finish



Panels comply with CARB Phase 2 formaldehyde emission standards, meeting strict California environmental regulations for safer indoor air quality.



Modern & Architectural

Painted Cream

Frameless Collection, Flat
Precision in every line.

Finished with Sherwin-Williams paint for an ultra-smooth surface.

The creamy white tone feels soft and warm, like milk, bringing a calm, welcoming feeling to the home.

Styled With Marble









Modern & Architectural

Painted Cream

Frameless Collection, Slim Shaker

Precision in every line.

Finished with Sherwin-Williams paint, the surface feels smooth and refined. The creamy white tone is soft and warm, bringing a calm and welcoming feeling to the space.

The slim frame structure keeps the lines clean and light, creating a simple, modern look.

Styled With Marble











Modern & Architectural

Painted Snow

Framed Collection, Shaker

Precision in every line.

All door panels feature solid birch wood frames and are finished with Sherwin-Williams paint.

The Shaker-style design is versatile and elegant, offering a timeless look that complements a wide range of interiors.











Warm & Natural

Stained Oak

Frameless Collection, Flat
Precision in every line.

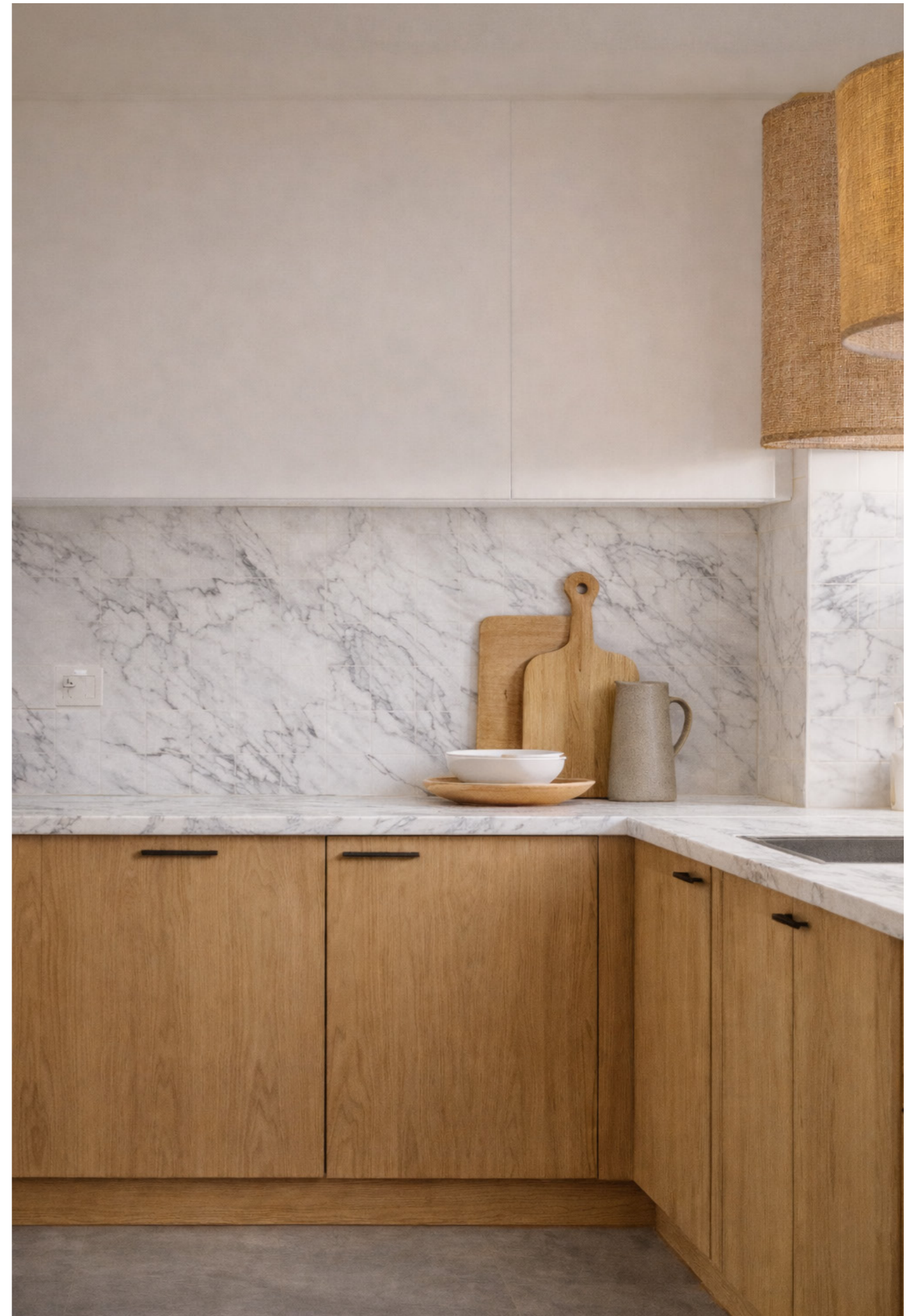
Authentic white oak veneer highlights the natural beauty of real wood grain.

The flat panel profile offers a clean, timeless look that brings warmth and quiet elegance to any space.

Styled With Marble



*Real Oak
Veneer*





Warm & Natural

Stained Oak

Frameless Collection, Slim Shaker

Precision in every line.

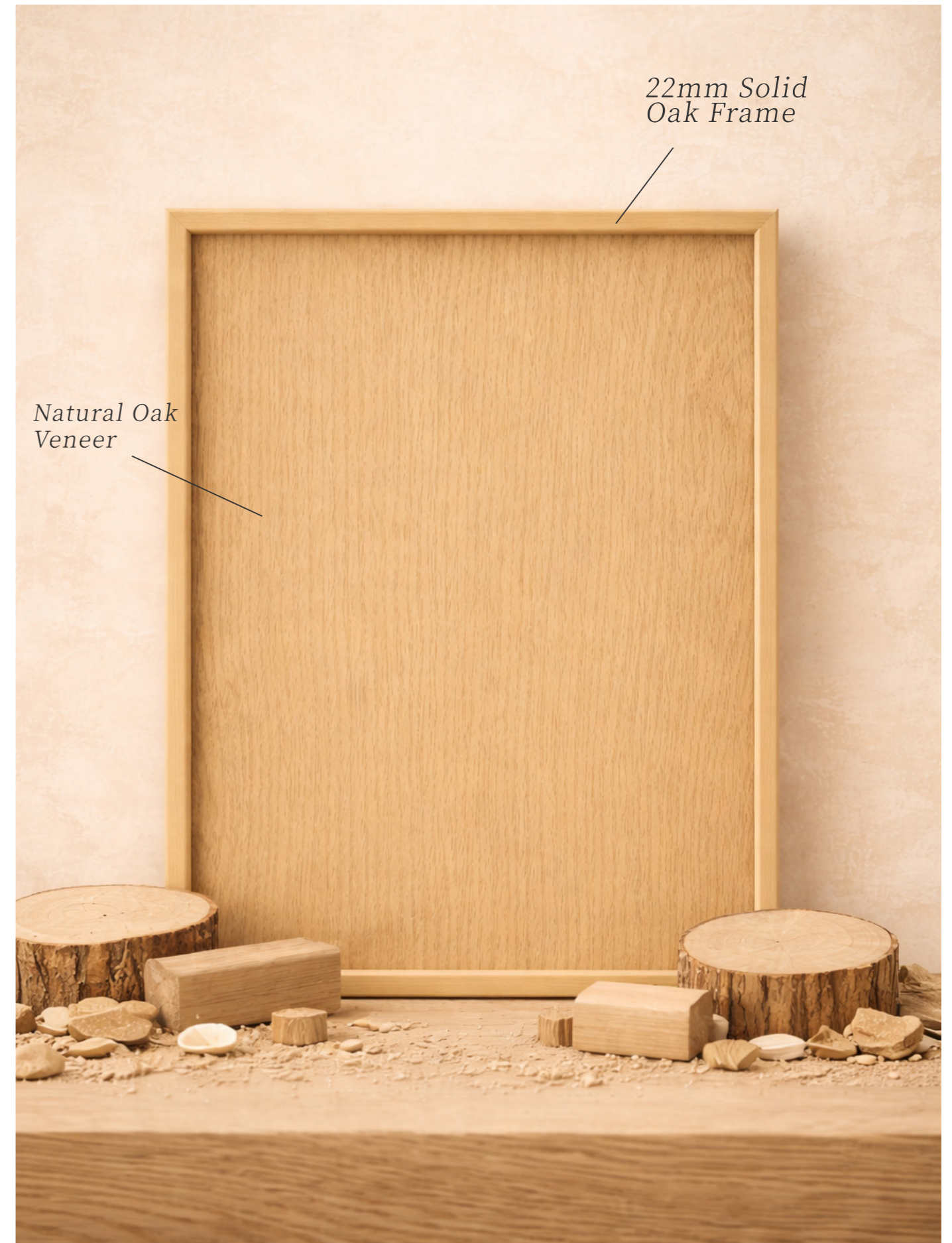
Perfected through repeated refinement to reach its ideal proportion.

The frame is made from natural white oak, paired with a white oak veneer center panel.

At 22 mm thick, it stands out as a rare specification in the market.

Deeply carved lines express a quiet and disciplined luxury.

Styled With Marble











Warm & Natural

Stained Oak

Framed Collection, Shaker

Precision in every line.

A timeless and traditional design, crafted with a luxurious solid oak strip door frame.

Lightly stained to preserve the natural wood tone, allowing the finest materials to speak through quiet simplicity.











Warm & Natural

Stained Birch

Framed Collection, Shaker

Precision in every line.

Crafted with a solid birch wood frame, this door panel highlights the natural strength and stability of solid wood.

A carefully applied wood stain enhances the natural grain, bringing warmth and depth to the surface.

Finished with Sherwin-Williams paint, the coating provides a smooth touch while preserving the authentic character of the wood.







Refined & Timeless

Painted Grey

Framed Collection, Shaker

Precision in every line.

All door panels feature solid birch wood frames and are finished with Sherwin-Williams paint.

Finished in a refined champagne grey, this Shaker style blends subtle warmth with understated luxury, creating a calm and sophisticated atmosphere.









Modern & Architectural

Painted Matt Black

Framed Collection, Shaker

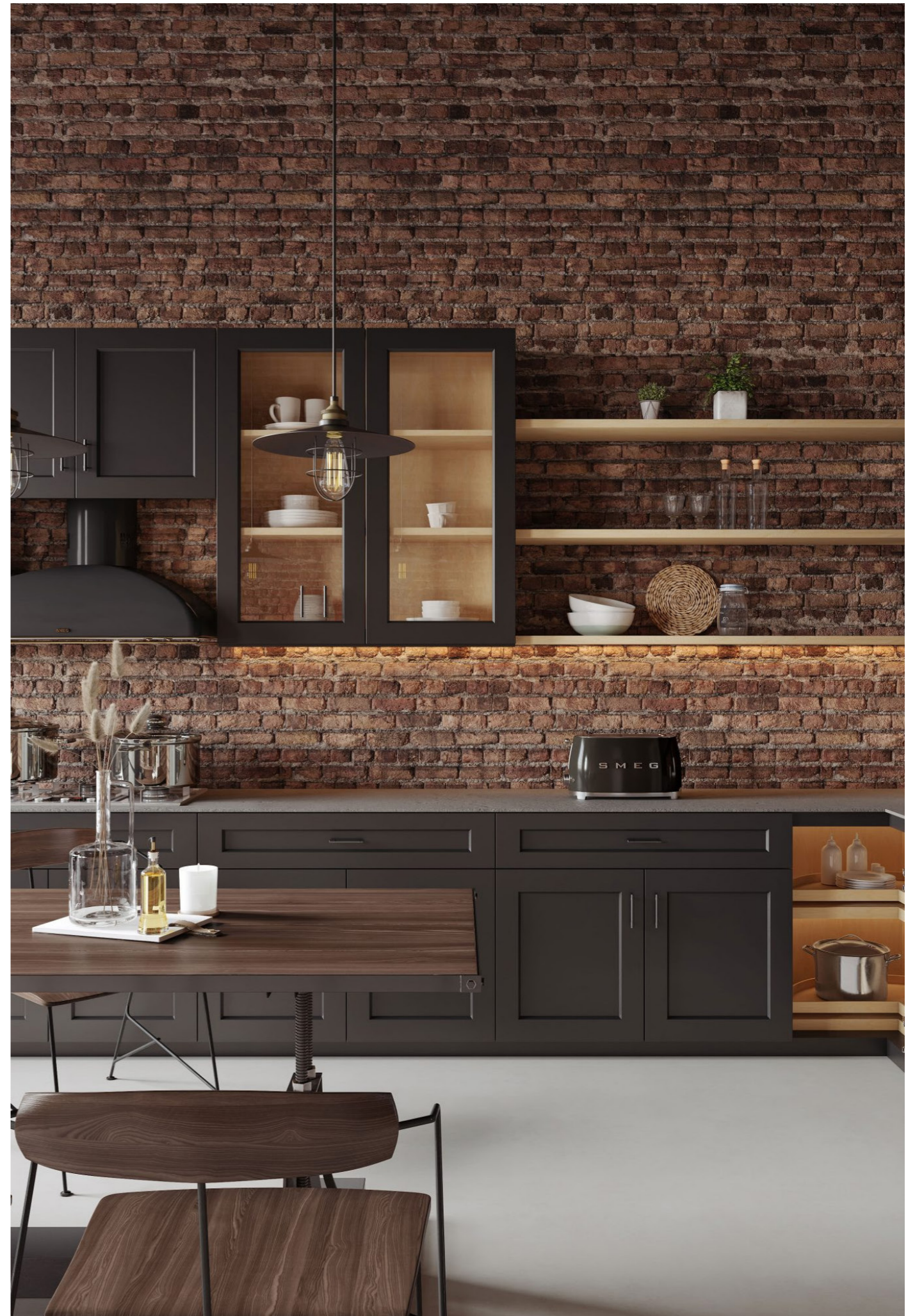
Precision in every line.

All door panels feature solid birch wood frames and are finished with Sherwin-Williams paint.

The Shaker-style design combines clean lines with a rich, modern finish, creating a sleek and sophisticated statement.



Solid Birch Frame











Modern & Architectural

Painted Metal Black

Framless Collection, Slim Shaker

Precision in every line.

Crafted with a birch wood frame, the metallic black finish with subtle reflections meets restrained slim lines, creating a sculptural elegance with an artistic presence.

Styled With Marble



22mm Solid
Birch Frame













Calm & Coastal

Stained Tiffany

Framless Collection, Flat
Precision in every line.

Evoking the feeling of standing by the ocean, where the breeze brings calm and relaxation.

The surface is finished with solid ash wood, its natural grain flowing like gentle waves.

The Sherwin-Williams finish is carefully applied without fully sealing the surface, preserving the authentic texture of the wood grain through hand treatment.

Styled With Marble





Heritage & Natural

Painted Grass

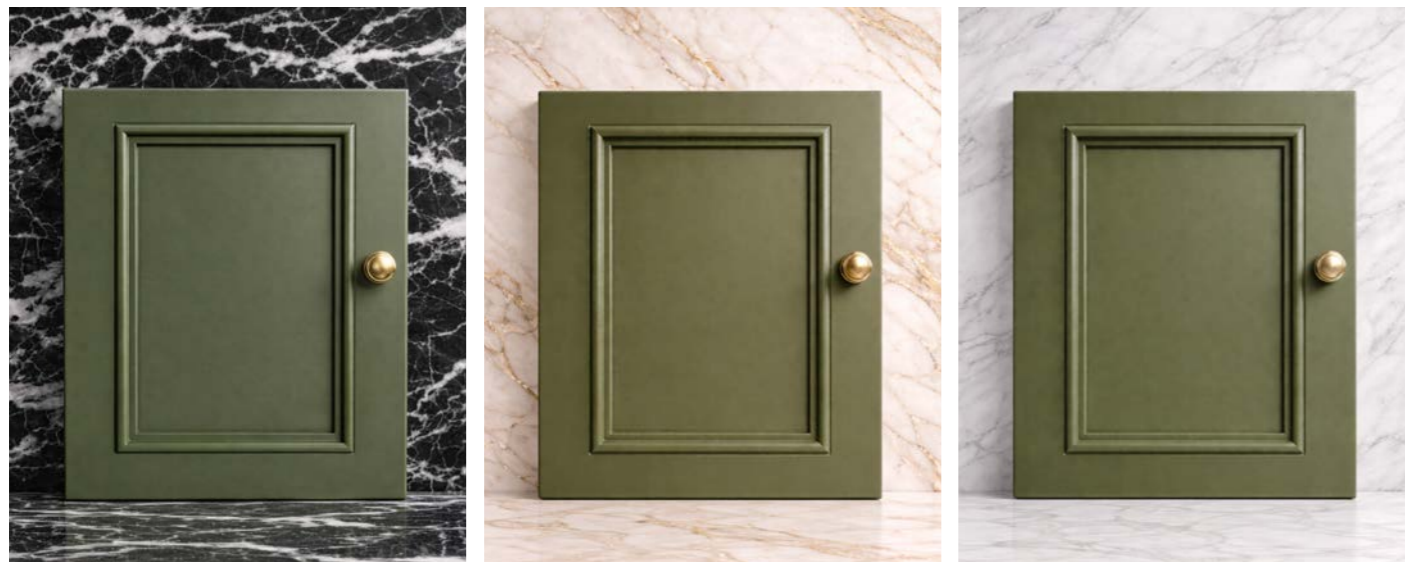
Framless Collection, Intricate French
Precision in every line.

The intricate French moldings are carefully hand finished, revealing refined craftsmanship in every detail.

The door frame is crafted from solid birch wood, ensuring durability and stability. The green tone is curated from more than a dozen shades, bringing a natural calm reminiscent of the outdoors.

Finished with Sherwin-Williams paint, offering a smooth, warm touch and a timeless vintage elegance.

Styled With Marble

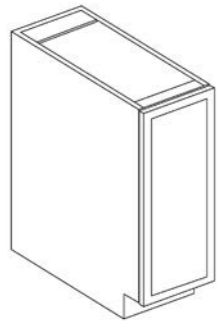




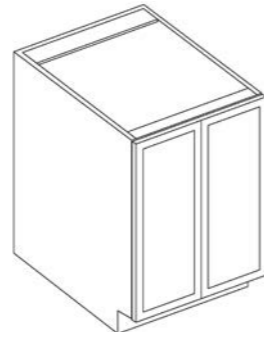




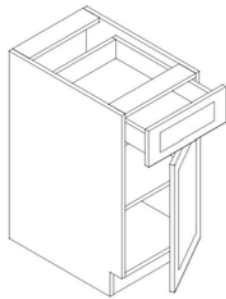
BASE CABINET



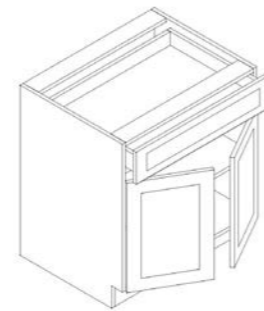
SKUB09FH-B21FH



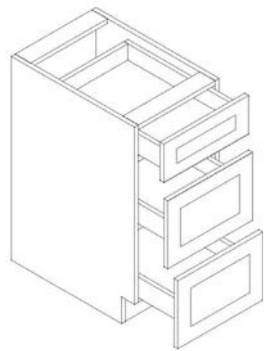
B24FH-B42FH



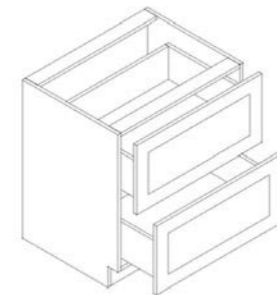
B12 B15
B18 B21



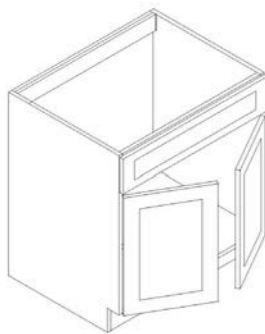
B24 B27
B30 B33
B36 B39
B42



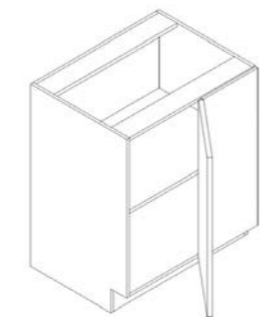
DB12-3-DB42-3



DB30-2-DB42-2



SB30 SB33
SB36 SB39
SB42



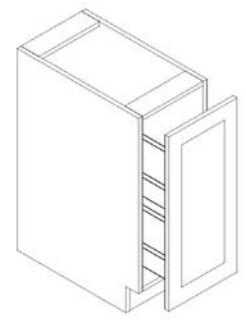
BBC3336
BBC3942

Modern & Architectural

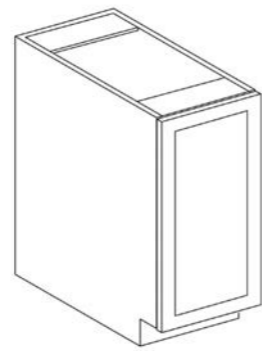
Precision in every line.



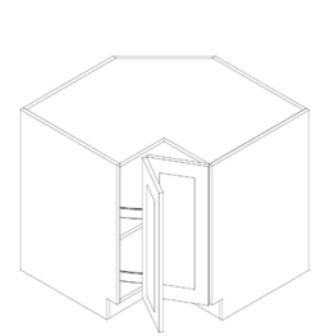
BASE CABINET



BSR

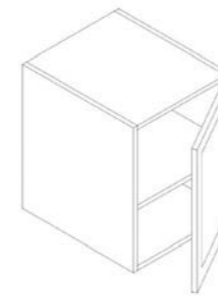


BWBK15
BWBK18
BWBK21

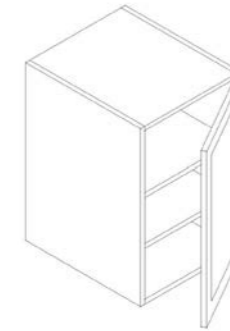


BLS33
BLS36

WALL CABINET



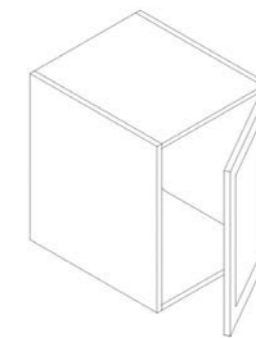
WP1824
WP1827
WP2124
WP2127



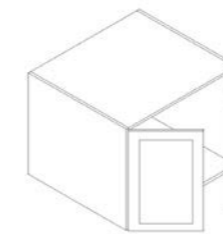
WP1830
WP1839
WP2130
WP2139



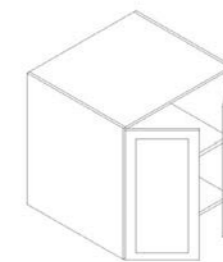
WP2466
WP3066
WP3666



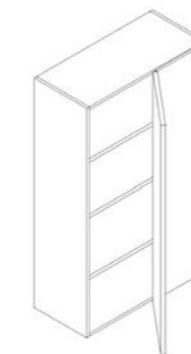
WP1815
WP2115
WP1818
WP2118



WP2415
WP3015
WP3615
WP2418
WP3018
WP3618
OP3018



WP2424
WP2427
WP3024
WP3027
WP3624
WP3627
OP3024
OP3027



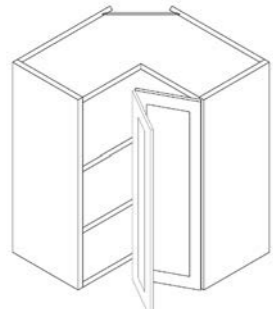
WBC3039
WBC3339



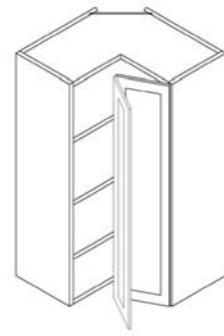
WP1866
WP2166



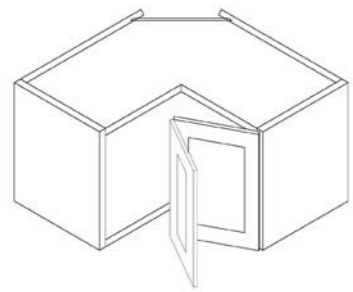
WALL CABINET



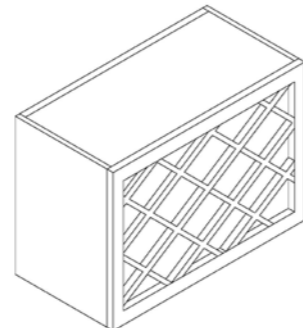
WLS2430
WLS2433
WLS2436



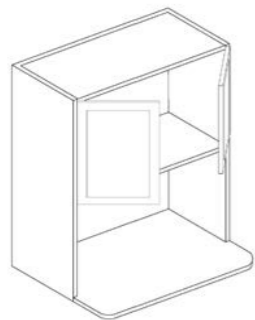
WLS2439



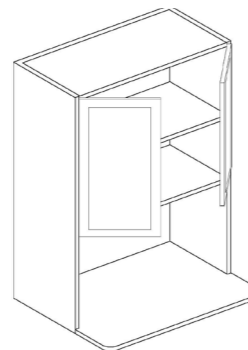
WLS2415
WLS2418
WLS2421



WWR3015



WMC2733
WMC2730
WMC2736



WMC2739

Modern & Architectural

Precision in every line.

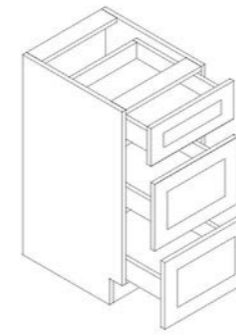


Minimal & Timeless

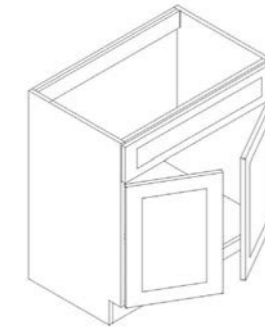
Quiet surfaces.
Lasting beauty.



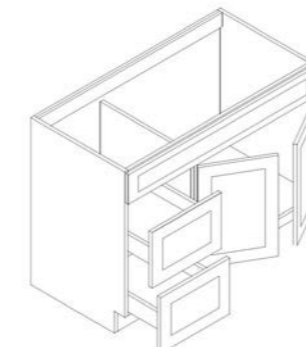
VANITY



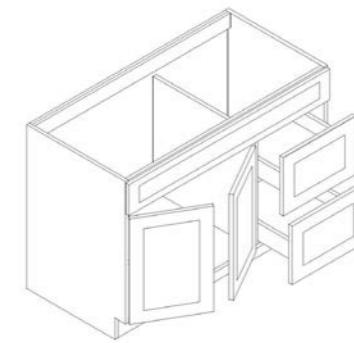
VDB12
VDB15
VDB18
VDB21
VDB24



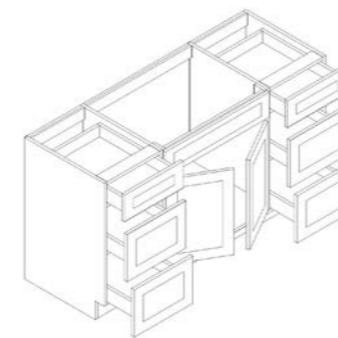
VSB24-VSB33



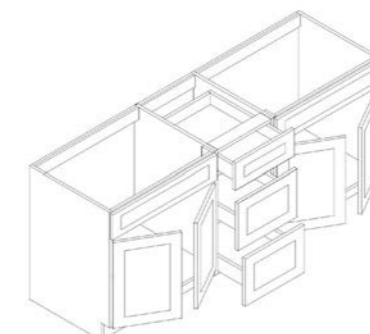
VSB36DL
VSB42DL



VSB36DR
VSB42DR

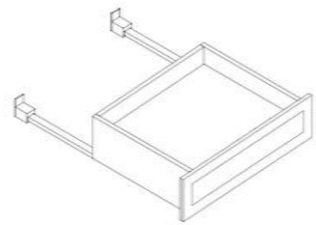


VSB60-6

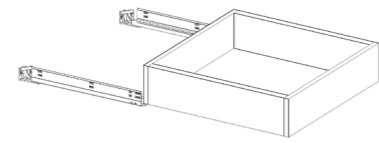


VSB60-3

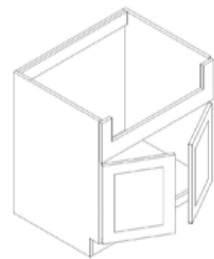
ACCESSORIES



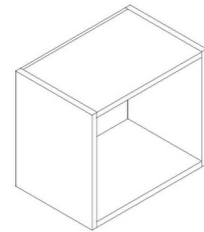
OROT30-8
 OROT30-6
 OROT30-12
 OR0130-15
 OP3027



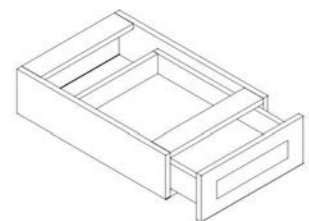
RT18 RT21
 RT24 RT27
 RT30 RT33
 RT36



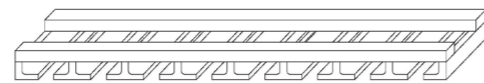
FSB33
 FSB36
 FSB39



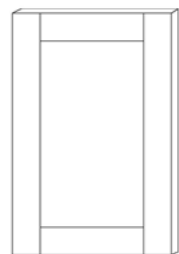
WO-30
 WO-36



KD18-KD42



GH30



WDD
 BDD



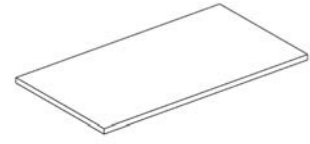
DDF3609
 DDF3909
 DDF4209
 DDF4809

Heritage & Natural

Rooted in nature.
 Crafted to last.



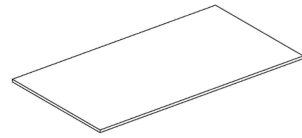
MOULDING



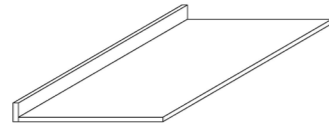
PNB25
PNW1343
PNW1353
PNW3696
PNI50
RP2796
RP27108



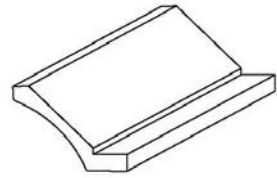
RP2796-THK
RP27108-THK



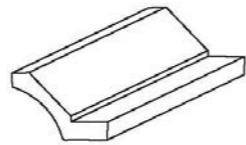
BACK48
SHELF4224



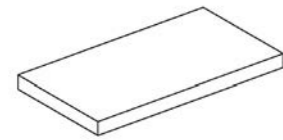
RRP2796
RRP27108
DWRP



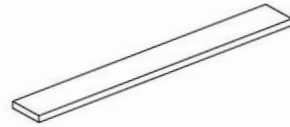
CM3.5



CM2

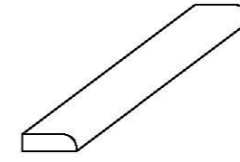


FS24
FS30
FS36
FS42
FS48
FS60



WF0339 WF0639
WF0351 WF0651
WF03108 WF06108
WF0330 WF0630
WF0336 WF0636
WF0396 WF0696

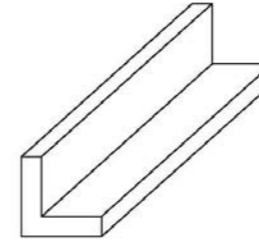
MOULDING



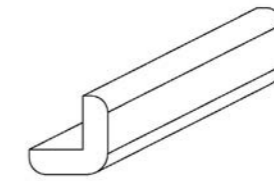
CM8



TK8

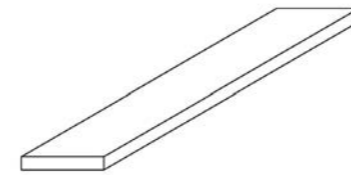


LM396
LM696

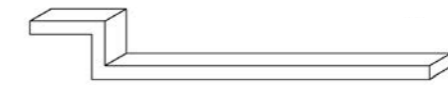


OCM

FILLER



TF



BF

CABINET HANDLES



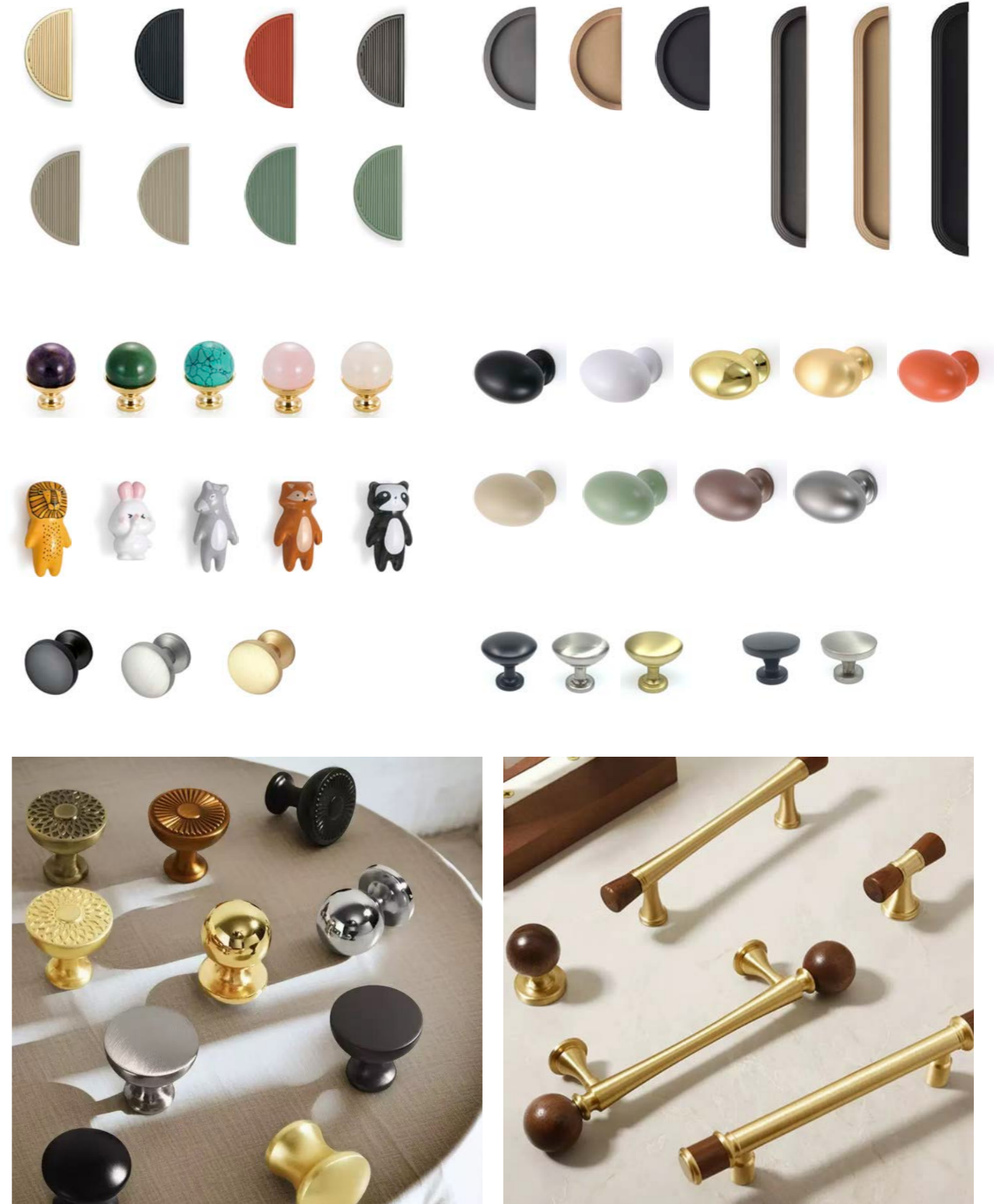
CABINET HANDLES



CABINET HANDLES



CABINET HANDLES



We have more styles of handles in stock



Address

23700 El Toro Rd, Suite A2
Lake Forest, CA 92630

Contact

(626) 418-1583

Wechat



*All images in this brochure are based on product renderings and are for reference only.
The actual product shall prevail.