

Southwest Family Farms

20494 Highway 160, Plains, KS 67869 ♦ 620-563-7212

Broken Record

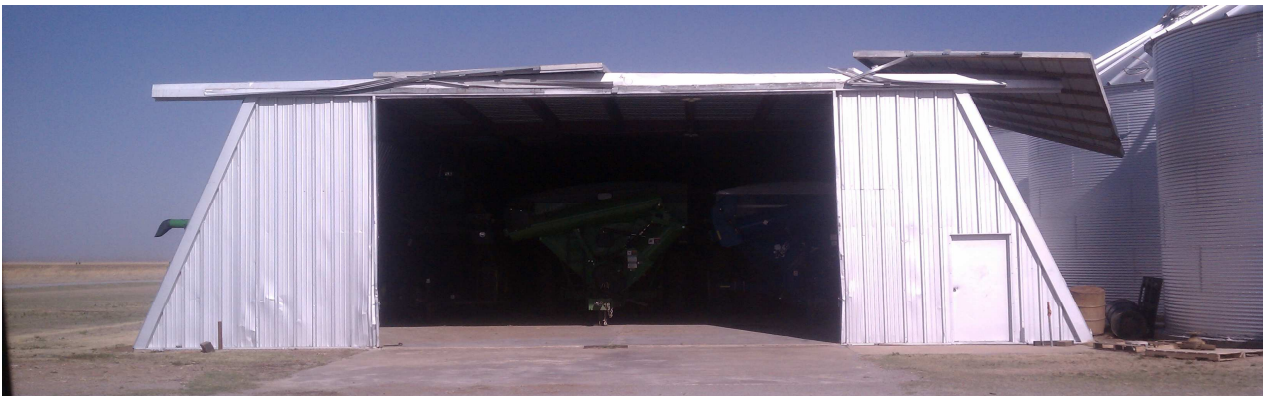
Not to sound like a broken record, but the current drought continues to break records. The last two newsletters have mentioned facts about the current drought we are in, and this newsletter is no exception. This summer was the hottest summer on record with 63 days of temperatures above 100 degrees. The hot temperatures broke a 1930s record of 53 days above 100 degrees. Not only did the heat take its toll on this year's crop, but the lack of rain made matters worse. We received two rains over 1" (August and November) in 2011 and received a total of 6.5" for the year.



Strong winds blew dirt around this irrigation site.

No-till farming has and will continue to prove to be beneficial in dry years like this year. In Seward county, some fields received only .5" of rain since mid-July. This moisture was just enough to germinate the wheat seed that we no-till drilled. Fields that were worked with a sweep plow and drilled to wheat didn't emerge because of the drier seed bed. Every year we face new challenges and have learned that no-till must be a continued practice for our farm.

The drought in the past 2-3 years has completely depleted all of our sub-soil moisture. A couple of wet years will be necessary to make up for the lack of moisture. While our situation may seem grim, other producers in parts of Kansas, Oklahoma, and Texas have the same, if not worse, conditions.



Strong winds this spring ripped the doors off of one of the storage sheds. The doors are sitting on top of the building.

Southwest Family Farms News

New Faces

We have a couple of new faces on our farm. In May we hired two new employees to help with our farming operations. Nathan Varnes grew up in Liberal, Ks and was married in June. He brings excitement, optimism, and a good work ethic to the operation. Nathan will concentrate on equipment maintenance, irrigation management, and trucking



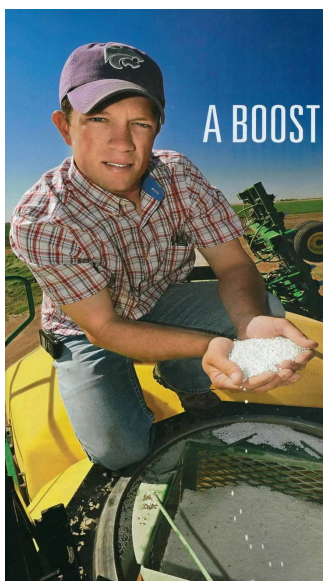
Dalton Hyke grew up on his grandpa's farm in Arapahoe, Nebraska. He approached us about an internship and has decided to become a full time employee. Dalton has a strong farming back ground and loves to drive anything that is green. He will concentrate on chemical application, harvesting, and planting

We feel very fortunate to have both of these individuals working on our farm. They both have unique skills and personalities that will be assets for our farm and community.

Also new to the farm is Brett and Sarah's new baby girl, Addison Michelle Reiss, born on October 10, 2011. Katelyn is her big sister and will turn two in December. We are grateful for all of God's blessings, big and small!



SWFF Featured in Three Farm Magazines



By Larry Reichberger

A BOOST FOR BEANS

Nitrogen puts the top in high soybean yields

The nodules that grow on soybeans and other legume crops create nitrogen—one of life's basic building blocks—out of thin air. That's an amazing trick, but there's a limit to the magic. Growers pushing for top soybean yields are finding they need to give those nodules a hand by supplying additional nitrogen.

Traditional thinking is that soybeans make their own nitrogen, so you don't need to add any, but that's not totally true," says Bryce Bobst, regional agronomist for Winfield Solutions. "Depending on the yield goal, weather conditions, and the amount of carryover nitrogen available, more nitrogen may be needed."

Bobst goes to the numbers to prove his point. "Research has shown that soybeans use about 3 pounds of nitrogen per bushel of yield, so a 60-bushel crop needs 300 pounds of nitrogen. Through nitrogen fixation, the root nodules provide about 70% of the need, so that's 210 pounds per acre. That leaves a deficit of 90 pounds per acre, which must either be mineralized in the soil, be available as a carryover from the previous crop, or be applied to meet the yield goal."

"The amount of nitrogen that can be mineralized by the soil varies with the level of organic matter and the weather conditions, including temperature and moisture," Bobst says.

▶**Left:** At Southwest Family Farms in Kismet, Kan., grower Brett Reiss is adding banded starter nitrogen fertilizer to give soybeans a boost.

Southwest Family Farms was featured in three farm magazines this past year. *Successful Farming* ran two articles featuring our farm. These two stories were about anhydrous ammonia application and on-farm storage. *The Furrow* also published an article and interviewed us about applying nitrogen fertilizer on soybeans. You can see all of these articles on our website. Simply visit www.southwestff.com and under the *Archive* tab click *Articles*.

Stripper Heads

We recently added a pair of Shelbourne Reynolds Stripper Headers to our equipment fleet. These heads were specifically designed for wheat in England, and are assembled in Colby, KS. The idea behind the stripper head is to leave as much wheat straw standing in the field when harvesting. The header has a large drum with cupped sickles that strip the head off of the plant. This reduces the amount of material flowing through the combine and leaves the entire wheat plant, other than the head, standing in the field. The tall residue will help catch snow. We anticipate that these headers will help increase yields and conserve more moisture.



New Office Location

SWFF has moved! In June, we moved our farm office to a new location. Our office is located 8 miles west of Plains on Hwy 160 or 5 miles north of Kismet. The office is centrally located on our farm in Seward County, which will be very convenient. The new office provides us a place to take breaks, manage our operation, and host business and safety meetings. The office sits on land our family homesteaded in 1941. Our fifth generation farm has seen many changes over the past years. We are looking forward to many more years caring for the land.



NEW ADDRESS

20494 Hwy 160

Plains, KS 67869

(620) 563-7212

www.southwestff.com



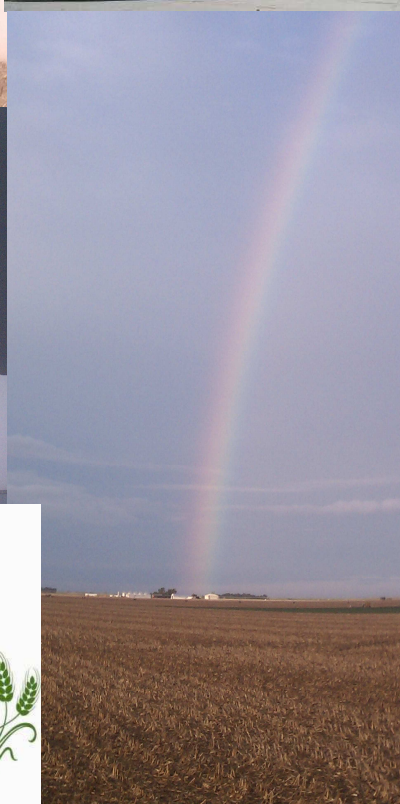
Like us on Facebook

www.facebook.com/southwestfamilyfarms



Follow us on Twitter

@southwestff



Southwest Family Farms

