

# arkive

CONSERVATION STORAGE + DISPLAY SYSTEM





## DRAWING ON YEARS OF EXPERIENCE

In the world of professional conservation, there are plan chests and then there's Arkive. Designed in the 1970's for the National Archive of the Netherlands, the system has since been developed, refined and expanded to the point where, today, Arkive is the undoubted leader in drawer storage and display, built to standards of precision that few manufacturers can achieve. Unlike traditional timber or steel plan chests, the Arkive system offers a number of advanced features which conservators particularly value. A key difference is that precision that few manufacturers can achieve.

Arkive units are built from recycle-grade aluminium, making them much lighter than ordinary plan chests. With its range of drawer bases and the ability to fit transparent covers to any drawer, Arkive can be used as both highly secure preservation and attractive display. The system isn't just mechanically superior, however. Since we have total control over the design and manufacturing process, we're able to offer complete flexibility in terms of size of cabinets as well as width and depth of drawers. In short, whatever your needs, Arkive can respond to them. The following pages show not only the full range of features which Arkive offers, but also some of the many successful applications which have been built over the years.



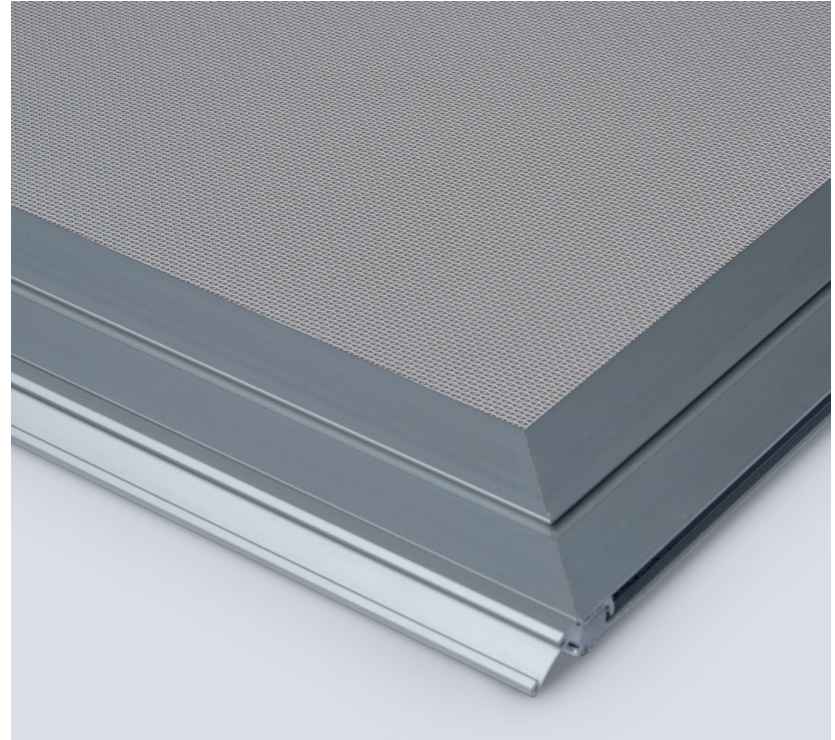


## INTELLIGENT DESIGN

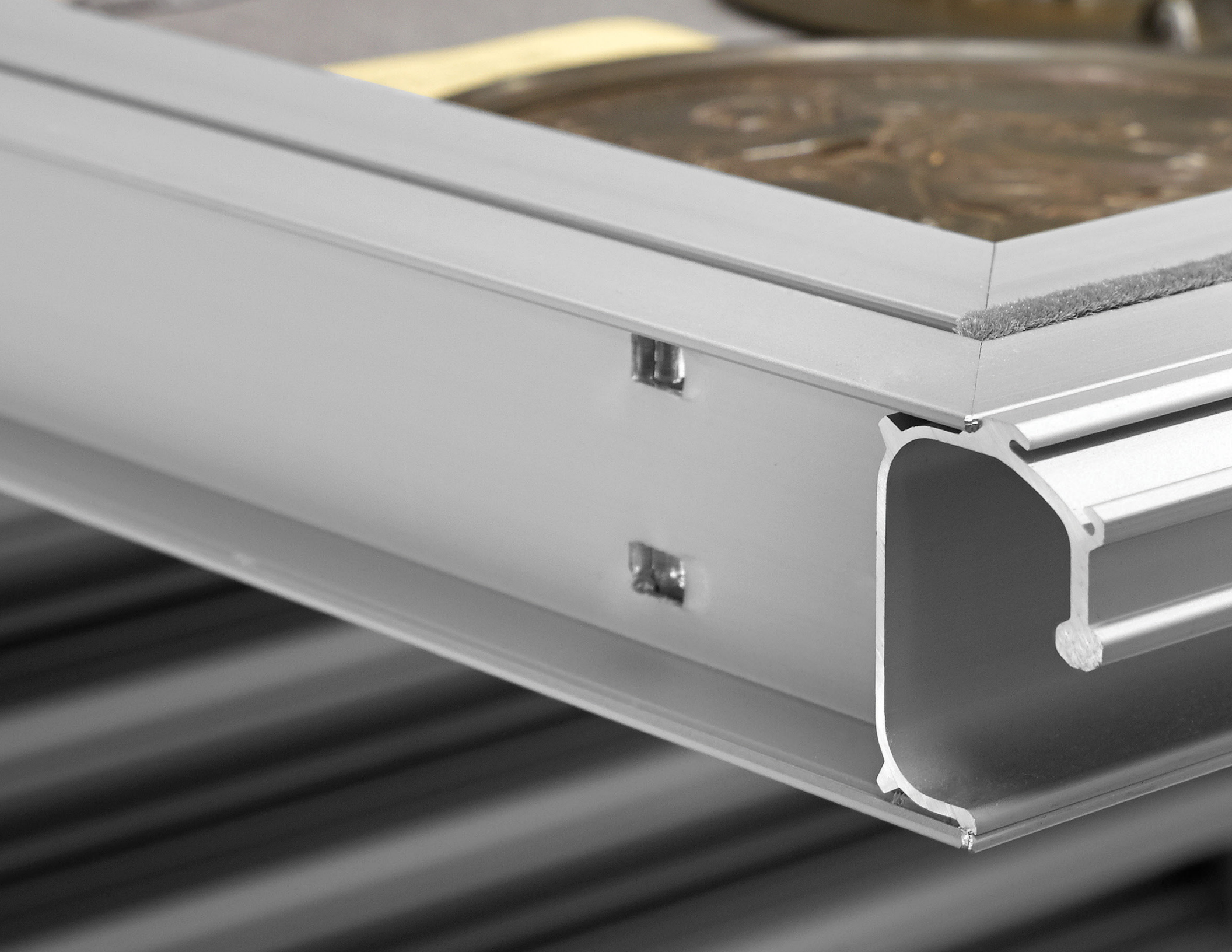
- + Drawers can be supplied with a choice of inert, lightweight and rigid bases. Sheet aluminium bases are the lightest and are most suitable for shallow drawers and the maximum separation of documents.
- + Arkive is especially appropriate for older buildings where floor loading is an issue as it's about 1/3 lighter than an equivalent steel cabinet.
- + Arkive cabinets can be supplied with glass tops so that the top drawer can be viewed while closed. Deeper drawers with glass or acrylic tops are ideal for open-access display.
- + Drawers can also be removed and displayed vertically.
- + Drawers can include custom inlays with laser-cut cavities to secure and protect artifacts, and we can coordinate comprehensive object handling and 3D scanning services.
- + The lightweight, removable drawers are extremely useful in many situations.
- + Where required, we can fit drawers with a choice of pull-out locking systems.
- + To ensure a dust-free environment the cabinet modules and the front of each drawer are fitted with dust-exclusion brushes.
- + Arkive units can be supplied in a wide variety of heights.
- + Cabinets can be easily and securely stacked on top of each other.
- + The cabinets or raised bases are fitted with solid aluminium levelling feet.
- + If required, cabinets can be secured with an Abloy® central locking system.
- + The cabinets have the option of stylish but heavy-duty locking wheels on a heavy-duty chassis.
- + Our standard colour and finish is matte silver anodised aluminium, but custom finishes are available at extra cost.
- + For special aesthetic needs, we can finish drawer fronts in other materials, such as timber.
- + In situations where it's not possible to install an assembled cabinet, we can deliver Arkive as flat components and our technicians can assemble it on-site.



All drawers are fitted with brushes to keep dust out, while our unique nylon runners mean that there's no need for any lubricant which can risk contaminating the contents.



We can supply Arkive drawers with nylon mesh bases for use with lightweight documents or textiles. They can also be used with our open drying rack.





The combination of specially designed aluminium extrusions and castings, coupled with careful hand assembly is unique to our manufacturing process and stands up to even the closest scrutiny.

## WHEN THERE'S NO SUCH THING AS STANDARD

One of the key benefits to museums, libraries, art collections – and even specialist retailers – is our ability to create custom solutions to house any object, no matter how small or delicate.

For objects which need to be held safely and securely, we can create cavities of any size and shape in Plastazote® foam using digital scanning and laser cutting. In addition, we can manufacture tailor-made drawer dividers and transparent drawer covers so that even the rarest and most vulnerable items can be housed and examined with a minimum amount of handling.





## MIXING & MATCHING



An Arkive drying rack in a conservation studio.

Our standard drawer heights are 10mm, 20mm, 42mm, 64mm, 86mm, 108mm and 185mm, and all drawer fronts feature a full-width handle with an integral label holder. You can easily mix drawer depths within a single cabinet, thanks to the low maintenance runners which are set at increments that allow for storing items of varying sizes within a single cabinet.







British Museum Hirayama Studio

## A WORLD-CLASS PEDIGREE

Arkive is used in museums, institutions and retailers across the globe, many of whom have been customers for over thirty years. In the UK, clients include the BBC, Selfridges, Harrods, the Imperial War Museum, Duxford Museum and Tate Britain, to name just a few.

Arkive has been supplied to clients from New York to Tokyo, Oslo to Riyadh. In short, it's no exaggeration to say that Arkive really is a product with an international reputation for excellence.



Sanderson Design Group



British Museum

The British  
Museum

BRITAIN  
TATE

wordsworth  
GRASMERE

H  
The Higgins  
BEDFORD

A ASHMOLEAN  
MUSEUM  
OXFORD

SAN  
DER  
SON  
DESIGN GROUP

AMGUEDDFA  
CYMRU

WM IMPERIAL WAR  
MUSEUM

Silverstone  
MUSEUM

## GOING ABOVE & BEYOND

Not only do we build cabinets of the very highest quality, every member of the team cares passionately about customer satisfaction. Because we hand build Arkive cabinets in our own factory, we see the successful installation of each and every unit as key. Because of this, from the initial call to the hand building of each Arkive unit - exceeding client expectations is our goal.

Crucially, our service doesn't stop there; if and when your requirements change, we can modify and upgrade all our Arkive units without having to replace whole cabinets. This is one of the many advantages of adopting a precision engineering approach to manufacturing.







## FUTURE PROOF

A good example of long-term thinking was the installation in the British Museum's World Conservation and Exhibition Centre. Initial budgets didn't allow for all 25 of the cabinets they had planned so, rather than deliver fewer cabinets, all 25 were delivered but with fewer drawers. The empty space was blanked off and the additional drawers were delivered the following year when budget allowed.

In short, when you choose Arkive, you don't just get the most versatile and technically advanced storage and display product around, you also benefit from our total commitment to exceeding customer's expectations.





2949 Venture Drive, Suite 104  
Janesville, WI 53546 USA

---

+1 608.728.8063

---

[info@asgaard-systems.com](mailto:info@asgaard-systems.com)

---

[asgaard-systems.com](http://asgaard-systems.com)