



quilted BOOKMARK

Pattern by Anna Avery-Vaughn of Forever Bee Bee Louise

Photography by Sarah Ashford

Finished Size: 4" x 6"

FABRIC REQUIREMENTS

Chevron Background fabric - (1) Fat Eighth (F8)

Chevron fabric - (3) F8s

Pen holder background - (1) F8

Pen holder front - (1) F8

Pen holder pocket - (1) 5" x 2" scrap

Backing - (1) F8

Batting - (1) 6½" x 4"

The fabrics used in this sample shown are from the Great British Quilter Back to Basics collection by Sarah Ashford for Dashwood Studio, available at morristextiles.com

ADDITIONAL SUPPLIES

½" fold-over elastic - Cut (1) 11" piece

50 wt cotton thread such as Aurifil, Quilters Select or Mettler

Size 90 quilting or topstitch needle

Walking foot

Turning tool

Add A Quarter Ruler

Glue stick

CUTTING

From Background fabric (A), cut:

(9) 3" x 4" rectangles

From each Chevron fabric, cut:

(3) 3" x 4" rectangles

From Pen holder background, cut:

6½" x 2" rectangle

From Pen holder front, cut:

6½" x 2" rectangle

From Pen holder pocket, cut:

5" x 2" rectangle

From Backing, cut:

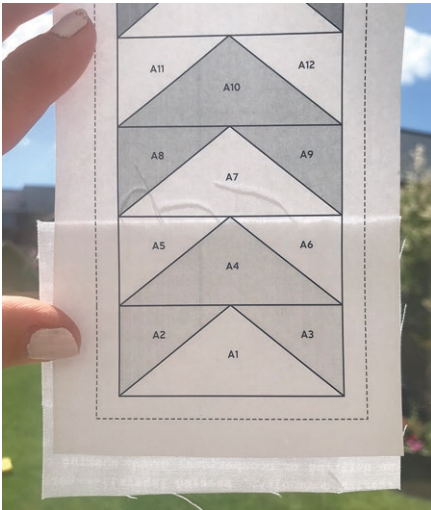
4" x 4½" rectangles

PIECING

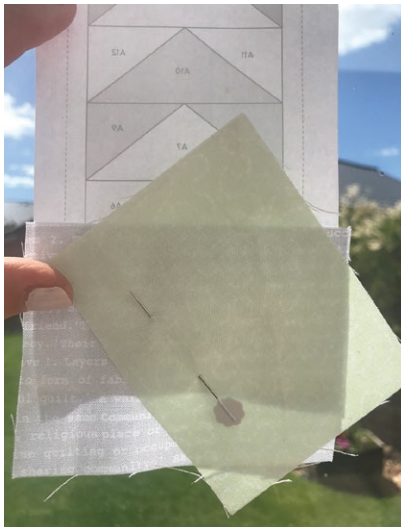
Make 1 copy of the chevron paper piecing template on page 7 at 100%.

Tip: Set machine stitch length to 2mm.

1. After making copy of the chevron paper piece template trim ¼" away from the outside line. The outside line is the ¼" seam allowance for the chevron, please do not cut.
2. Flip the template so the right is side down on a light box, window or a light surface. Light can show through helping to see the lines better.



3. Using a glue stick place a dab of glue on the area labeled A1. Place an A2 piece on top of the area A1 Leaving ¼" over the area labeled A1 and A2. Pin to hold in place.



Flip the unit over and stitch directly on the line between A1 and A2. Flip back over and press A2 back over seam.

4. Flip over again and fold the paper piece over the previously stitched line. Using a ¼" seam trim off and excess. You can also use an Add A Quarter ruler for this process.



5. Repeat this process for the remaining fabric until each chevron is complete.



Use the same chevron fabric for sections A2, A3, A4, a second chevron fabric for A8, A9, A10, a third chevron fabric for A14, A15, A16, and your chosen background fabric for all the other sections.



6. Flip the final unit over and trim directly the outside line then carefully remove the papers.



BOOKMARK ASSEMBLY

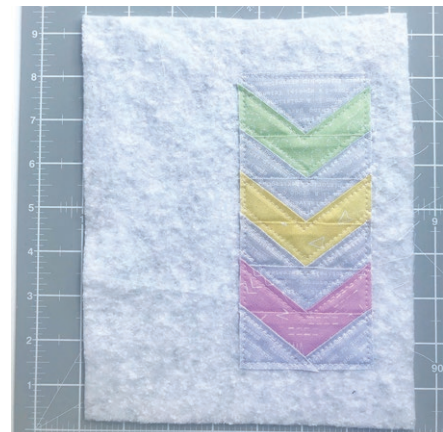
1. Fold and press one short end of the Pen holder pocket fabric $\frac{1}{2}$ " to the back. Topstitch $\frac{1}{8}$ " from the folded edge.



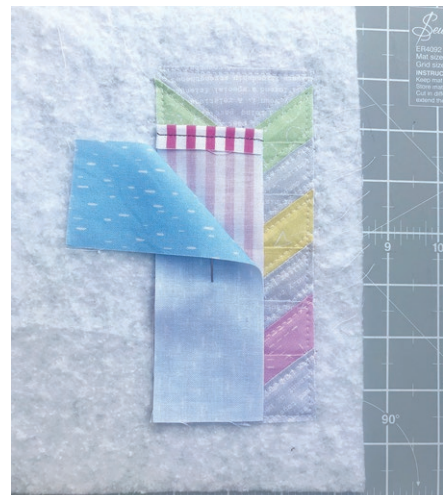
Aligning the bottom edges, layer the wrong side of the topstitched Pen holder pocket fabric on the right side of the Pen holder background. Pin together to hold in place.



2. Next, lay the chevron unit on top of the $6\frac{1}{2}$ "x 4" batting piece aligning the right raw edge with the right edge of the batting. You may find it helpful to adhere the chevron unit to the batting with spray baste. Quilt as desired then stitch all the way round the edge of the chevron unit to 'seal' the edges.



Lay the pocket unit right sides together on the left long edge of the chevron/batting unit.



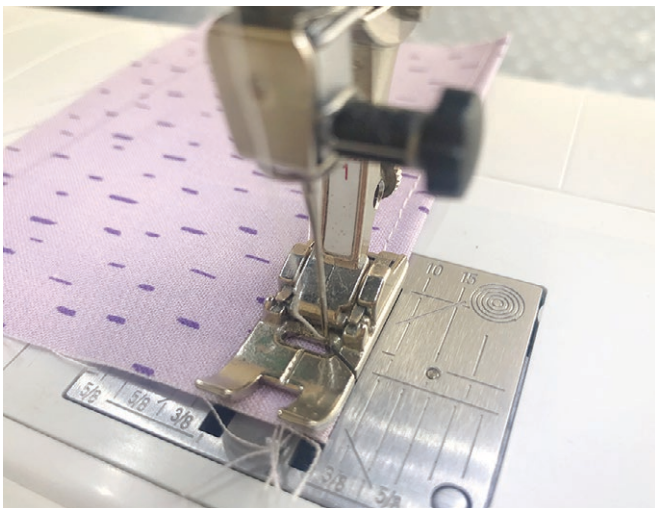
Stitch down long edge with $\frac{1}{4}$ " seam. Press the pocket unit away from the chevron unit. Topstitch $\frac{1}{8}$ " away from the seam of the chevron/ pocket unit.



- Trim the unit to $4\frac{1}{2}$ " x $6\frac{1}{2}$ " and remove any excess batting around the outside.



- Fold and press one of the 4 " x $4\frac{1}{2}$ " backing pieces under $\frac{1}{4}$ " on the long end. Topstitch $\frac{1}{8}$ " from the folded edge.



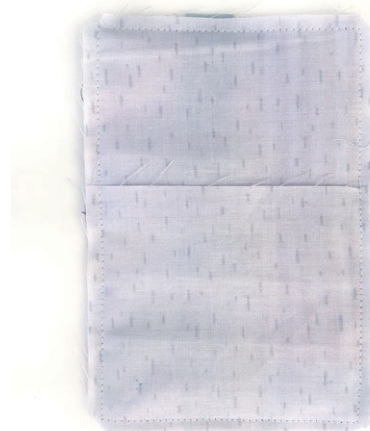
- Center and pin the raw edges of the fold over elastic to the front of the chevron unit with raw edge aligned.



- Layer one backing piece on top of the chevron unit right sides together with raw edges aligned, making sure the topstitched edge falls in the middle. Layer the second backing piece in the same manner on the opposite side to create a pocket backing.



- Stitch the unit with a $\frac{1}{4}$ " seam around whole unit.
- Clip the corners and turn the unit inside out using the back pocket. Press out all four corners and press the unit.



Tip: Use a wool mat and a wooden clapper to set the seams and make flat.

9. Topstitch $\frac{1}{8}$ " away from the outside edge making sure to keep the fold over elastic out of the way.



Viola! You are done!



ABOUT THE DESIGNER

XXXXxxxxxxxx

