

# OFFICIAL SURVEY RECORD

SOUTHEAST 1/4, SECTION 31, T.7N. R.4 EAST

## LEGAL DESCRIPTIONS:

SURVEY OF ALL OF THE SOUTHEAST QUARTER OF SECTION 31, T. 7 NORTH, RANGE 4 EAST OF THE 6TH P.M., SALINE COUNTY, NEBRASKA LYING EAST OF THE CENTERLINE OF TURKEY CREEK AND MORE PARTICULARLY DESCRIBED AS FOLLOWS:

BEGINNING AT THE SE CORNER OF THE SE.1/4 OF SAID SECTION 31; THENCE IN A WESTERLY DIRECTION, ALONG THE SOUTH LINE OF THE SE.1/4 OF SAID SECTION 31, ON AN ASSUMED BEARING OF N90°00'00"W FOR A DISTANCE OF 1607.00' TO THE CENTERLINE OF TURKEY CREEK; (NOTE: THE NEXT 21 COURSES DEFINE THE CENTERLINE OF TURKEY CREEK) THENCE N27°57'21"E FOR A DISTANCE OF 407.63'; THENCE N26°27'10"W FOR A DISTANCE OF 267.18'; THENCE N21°28'21"E FOR A DISTANCE OF 259.98'; THENCE N13°04'23"E FOR A DISTANCE OF 121.33'; THENCE N17°09'24"W FOR A DISTANCE OF 340.14'; THENCE N09°09'46"W FOR A DISTANCE OF 175.75'; THENCE N24°06'12"W FOR A DISTANCE OF 155.89'; THENCE N42°55'23"W FOR A DISTANCE OF 233.87'; THENCE N10°11'09"W FOR A DISTANCE OF 285.83'; THENCE N66°31'55"E FOR A DISTANCE OF 109.92'; THENCE N53°42'15"E FOR A DISTANCE OF 140.83'; THENCE N06°48'59"W FOR A DISTANCE OF 91.35'; THENCE N61°51'24"W FOR A DISTANCE OF 62.77'; THENCE S89°32'51"W FOR A DISTANCE OF 102.71'; THENCE N63°32'52"W FOR A DISTANCE OF 82.27'; THENCE N35°00'11"W FOR A DISTANCE OF 54.17'; THENCE N18°56'08"W FOR A DISTANCE OF 33.51'; THENCE N25°46'24"E FOR A DISTANCE OF 42.40'; THENCE N83°48'46"E FOR A DISTANCE OF 101.77'; THENCE N41°50'10"E FOR A DISTANCE OF 87.31'; THENCE N17°32'20"W FOR A DISTANCE OF 121.96' TO A POINT ON THE NORTH LINE OF THE SE.1/4 OF SAID SECTION 31; THENCE N89°56'50"E, ALONG THE NORTH LINE OF THE SE.1/4 OF SAID SECTION 31, FOR A DISTANCE OF 1753.34' TO THE NE. CORNER OF THE SE.1/4 OF SAID SECTION 31; THENCE S00°13'12"W, ALONG THE EAST LINE OF THE SE.1/4 OF SAID SECTION 31, FOR A DISTANCE OF 2644.28' TO THE POINT OF BEGINNING AND CONTAINING AN AREA OF 96.81 ACRES

I, KERRY W. SIMONDS, A REGISTERED LAND SURVEYOR IN THE STATE OF NEBRASKA, DO HEREBY CERTIFY THAT THIS SURVEY WAS MADE BY ME OR UNDER MY DIRECT SUPERVISION AND IS CORRECT TO THE BEAT OF MY KNOWLEDGE AND BELIEF.

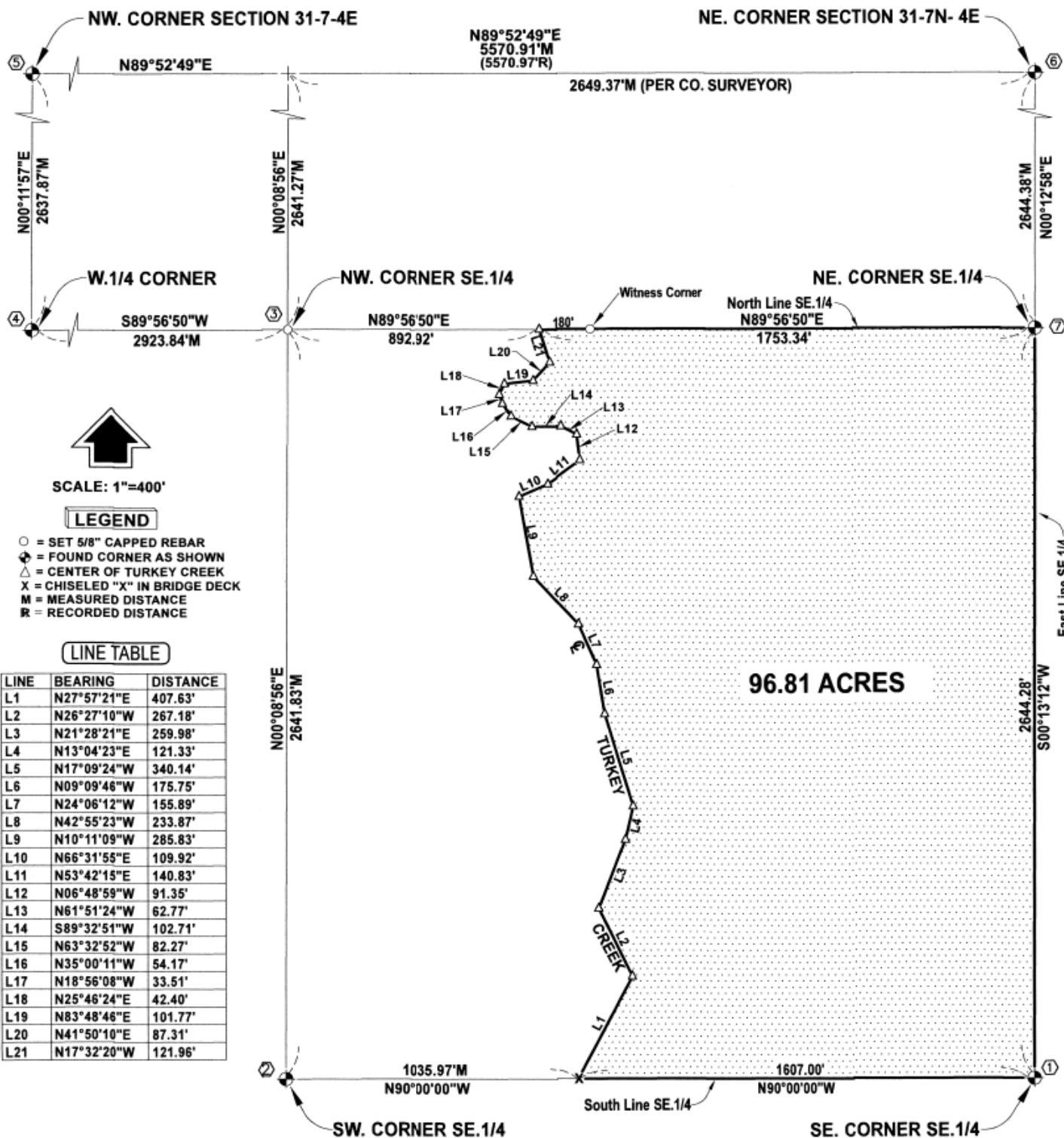
SIGNED THIS 1ST DAY OF NOVEMBER, 2021.

*Kerry W. Simonds*  
KERRY W. SIMONDS LS 333



## SECTION CORNER TIES:

- |   |  |
|---|--|
| ① SE. CORNER SE.1/4 SEC. 31-7-4E<br>Found 5/8" Rebar as Recorded<br>NE 22.15' to Drill Hole in Wing Wall<br>SE 33.62' to Drill Hole in Wing Wall<br>SW 91.88' to Drill Hole in Pivot Pad  | ② SW. CORNER SE.1/4 SEC. 31-7-4E<br>Found 5/8" Rebar as Recorded<br>NE 52.91' to 5/8" Rebar<br>SE 61.38' to 5/8" Rebar<br>North 33.00' to 5/8" Capped Rebar                              |
| ③ NW. CORNER SE.1/4 SEC. 31-7-4E<br>Set 5/8"x24" Capped Rebar<br>This Corner falls in Cultivated Field<br>(No Ties Available)   | ④ WEST 1/4 CORNER SE.1/4 SEC. 31-7-4E<br>Found 2" Alum. Cap as Recorded<br>SE 40.54' to 5/8" Rebar<br>NW 47.97' to 5/8" Rebar<br>SW 49.91' to 5/8" Rebar                                 |
| ⑤ NW. CORNER SECTION 31-7-4E<br>Found 5/8" Rebar as Recorded<br>E-SE 37.62' to Nail & Disk in CFP<br>NW 31.67' to Spike in Top Post<br>SW 45.96' to 5/8" Rebar                            | ⑥ NE. CORNER SECTION 31-7-4E<br>Found 2" Alum. Cap as Recorded<br>SE 44.81' to Nail & Disk in Power Pole<br>NW 42.46' to Spike in 24" Tree<br>SW 24.25' to Nail & Disk in Top W. End CMP |
| ⑦ NE. CORNER SE.1/4 SEC. 31-7-4E<br>Found 2" Alum. Cap as Recorded<br>East 35.46' to Spike in Power Pole<br>W-SW 29.40' to Spike in Top Brace Post<br>NE 57.82' to Mag Nail in Fence Post |  |



SCALE: 1"=400'

### LEGEND

- = SET 5/8" CAPPED REBAR
- ⊕ = FOUND CORNER AS SHOWN
- △ = CENTER OF TURKEY CREEK
- X = CHISELED "X" IN BRIDGE DECK
- M = MEASURED DISTANCE
- R = RECORDED DISTANCE

### LINE TABLE

LINE	BEARING	DISTANCE
L1	N27°57'21"E	407.63'
L2	N26°27'10"W	267.18'
L3	N21°28'21"E	259.98'
L4	N13°04'23"E	121.33'
L5	N17°09'24"W	340.14'
L6	N09°09'46"W	175.75'
L7	N24°06'12"W	155.89'
L8	N42°55'23"W	233.87'
L9	N10°11'09"W	285.83'
L10	N66°31'55"E	109.92'
L11	N53°42'15"E	140.83'
L12	N06°48'59"W	91.35'
L13	N61°51'24"W	62.77'
L14	S89°32'51"W	102.71'
L15	N63°32'52"W	82.27'
L16	N35°00'11"W	54.17'
L17	N18°56'08"W	33.51'
L18	N25°46'24"E	42.40'
L19	N83°48'46"E	101.77'
L20	N41°50'10"E	87.31'
L21	N17°32'20"W	121.96'