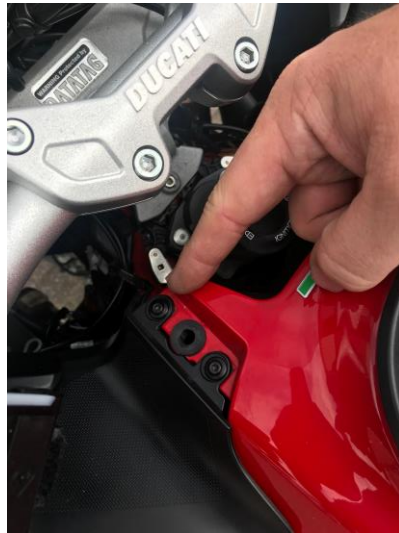


FITTING INSTRUCTIONS.



1. REMOVE MIDDLE
PANEL. A FIRM PULL
WILL RELEASE IT



2. REMOVE 2 SCREWS
FROM EACH SIDE



3. BOLTS REMOVED



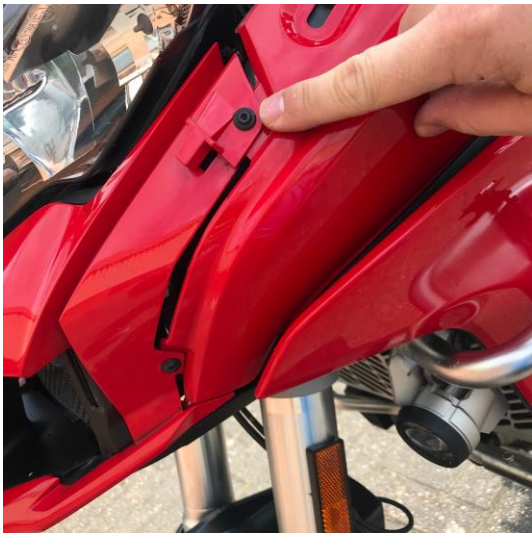
4. PUSH PANEL
FORWARD



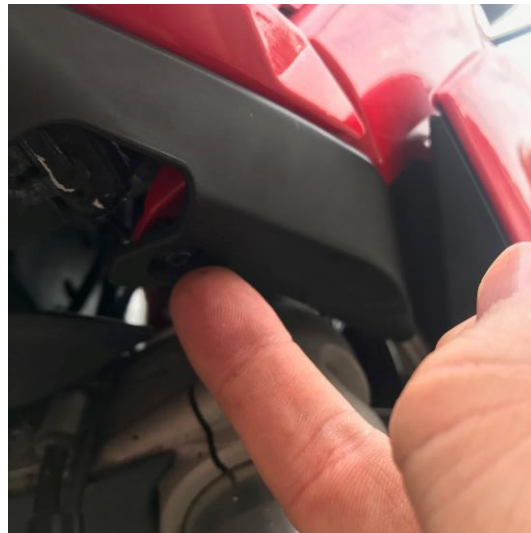
5. PANEL MOVED
FORWARD



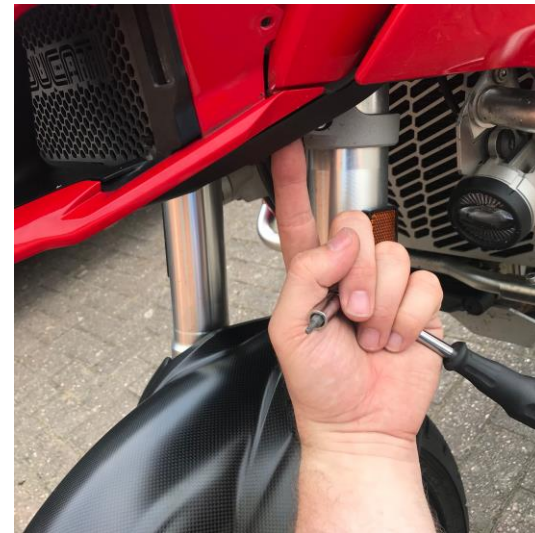
6. REMOVE SCREW
FROM BOTH SIDES



7. REMOVE SCREW
FROM BOTH SIDES



8. REMOVE SCREW
FROM UNDER NOSE. 3
SCREWS



9. REMOVE SCREW
FROM UNDER NOSE. 3
SCREWS



10. REMOVE SCREW
FROM UNDER NOSE. 3
SCREWS



11. FIRM FULL AND
NOSE WILL COME
AWAY. ONCE FREE
DISCONNECT CABLE
ATTACHET TO NOSE. MY
REQUIRE FLAT TOOL TO
NUDGE TANGS ON
CONNECTOR



12. GUARD WILL HANG
FROM TOP. FOAM WILL
PROTECT GUARD FROM
RUBBING ON
RADIATOR.

DEPENDING ON CONDITION OF THE RADIATOR IF COOLING FINS ARE FLATTENED OFF THEN SECURE
GUARD AS PICTURE '12'. IF RADIATOR IS IN NEW CONDITION THEN CABLE TIES CAN BE PASSED
THROUGH SIDE SLOTS OF GUARD AND THE GAP BETWEEN THE FINS AND SIDE PORTION OF RAD.
GENTLY TIGHTEN TO SECURE.