

**We welcome** The Rev. Jill Patterson Tolbert back to the pulpit this morning. Rev. Tolbert was born and raised in Dublin, Georgia, and has been active in PCUSA congregations her entire life as an ordained deacon, a ruling elder, and now a teaching elder. She is graduate of Mercer University and Columbia Theological Seminary. She has served in both campus and parish ministry roles, has written for the denominational adult study curriculum, *The Present Word*, and for At This Point, an online journal published by Columbia Theological Seminary. Jill is currently serving in a validated ministry role as a high school math teacher at North Caroline High School in Ridgely, MD.

In her spare time, Jill enjoys cooking, travel, and exploring nature. She and her husband Joel, pastor of Presbyterian Church of Chestertown, have three sons: Adam (27), Daniel (25), and Michael (23).

**Hearing devices may be found in the back of the sanctuary. Please ask an usher for assistance.**

**THE SESSION**

Moderator:  
Class of 2023  
Kristin Armstrong  
Reed Coats  
Scott Firmant  
Dot Kent

Class of 2024  
Sandra Borrer  
Patricia Dewey  
Patrick Lannon  
Sean Kennedy

Clerk of Session: Sandra Borrer  
Class of 2025  
John Danzeisen  
Ed Nass  
Michael Wright

**CHURCH NOMINATING COMMITTEE**

Chair: Reed Coats

Second Elder: Dave Robertson

Member-at-Large: Nancy Day

**STRUCTURE LEADERSHIP**

**MISSION AND MINISTRY**

Christian Education Team  
Adult Education Team  
Fellowship Committee  
Pastoral Care Committee  
Membership Dev. Team  
Community Outreach

Sandra Borrer, Betsy Coons  
Judy Thorpe, Tricia Dewey

Missions Committee  
Meals on Wheels  
Worship Committee  
Usher Coordinator  
Worship Assistant Coord.

Kristin Armstrong, Carol Young  
Judy Thorpe  
Georgia Coats, Dot Kent

Nancy Day

**FINANCE AND ADMINISTRATION**

Chair  
Vice-Chair  
Budget Team  
Investment Team

John Danzeisen  
Mike Haldeman  
Mike Haldeman  
Reed Coats, Paul Haldeman,  
Dave Baldt

Stewardship Team  
Counting Team  
Technology Team  
Personnel Committee

Linda Natali & Mike Haldeman  
Linda Natali  
Sean Kennedy  
Cindy Faulkner, Ed Nass

Cemetery & Property

Jason Casper & Larry Murphy

**OFFICERS OF THE CORPORATION**

President: Reed Coats Vice President: Ed Nass Secretary: Sandra Borrer Treasurer: John Danzeisen

**CHRISTIAN EDUCATION TEAM**

Christian Education  
Sunday School Teacher (K-5)  
LIFT Leaders

Becky & Sean Kennedy (until 5/31)

Adult Bible Class  
Adult Topical Study  
Adult Small Group  
Brown Bag Bible Study

Paul Wojtkowski, Marti Coats  
Sandra Borrer  
Tricia Dewey, Carol Young

**MINISTRY TEAM**

Interim Pastor  
Music Director  
Christian Education Program Manager  
Nursery Attendant  
Junior Choir Director  
Handbell Director  
Office Administrator  
Finance and Payroll Administrator  
Cemetery Manager/Property Coordinator  
Church Historian

Dr. Donna Beech  
Candace Smith  
Fabiola Castro  
Marti Coats  
Joan Wysham  
Becky Kennedy  
Linda Natali  
Jason Casper  
Joanna Kelly

Presbytery Delegates:

Sean Kennedy  
Sandra Borrer

*In Case of emergency, an AED Unit is located in the hallway on the ground floor near the nursery.*

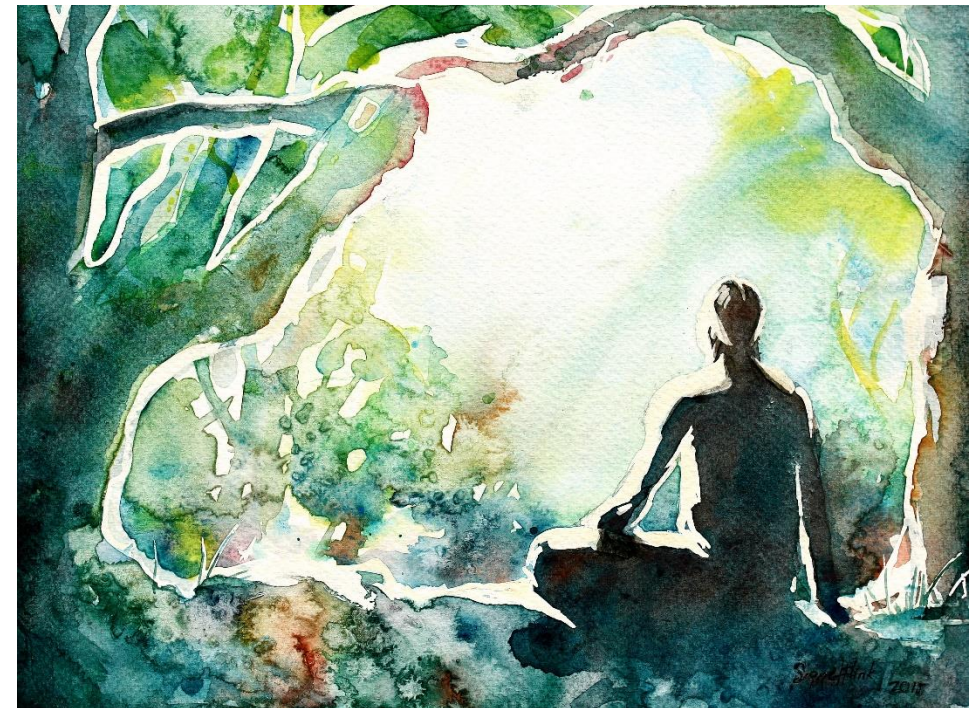


**Lower Brandywine Presbyterian Church**  
101 Old Kennett Road ~ Wilmington, Delaware 19807

302-658-2326 phone 302-658-1861 fax  
www.lowerbrandywine.org

Donna Beech, Music Director  
Candace Smith, Christian Ed Program Manager

**March 27, 2022**  
**Fourth Sunday in Lent**



*\*Please stand in body or in spirit*

**WE APPROACH GOD**

Welcome and Announcements

Prelude

Choral Introit *Bless the Lord, My Soul*

*J. Berthier*

\* Call to Worship (*Please stand and join responsively*) Adapted from Psalm 46

One: God is our refuge and strength, a very present help in trouble.

**All:** Therefore we will not fear, though the earth shakes and trembles.

One: Be still and know that God is indeed God.

**All: Exalted among the nations and in the earth.**

One: The Lord of hosts is with us.

**All: The God of Jacob is our refuge.**

\* Hymn No. 373 *O Day of Peace*

*Jerusalem*

Prayer of Confession (*The congregation uniting*) Written by Kimberly Bracken Long  
**God, our rock and refuge, there are plenty of things that we allow to erode our faith in you. When life gets stormy, we let our uncertainty cloud our trust in you. We think we know better and start relying on ourselves to be able to weather the rain. Forgive our lack of hope and the disbelief that drowns us. Allow us to hold on to you, our rock, and to build our lives on the foundation of your love. In the name of Jesus Christ, our stalwart and our shelter. Amen.**

Silent Prayer of Confession

Assurance of Pardon (*Please join responsively*)

One: Who is in a position to condemn?

**All: Only Christ. And Christ died for us. Christ rose for us, Christ reigns in power for us, and Christ prays for us. Anyone who is in Christ is a new creation. What has been washed away, and new life begins!**

One: Friends, believe the good news of the Gospel and know that in Jesus Christ, we are all forgiven!

Choral Response *Lord, Have Mercy*

*W. A. Mozart*

**WE HEAR GOD’S WORD**

Prayer for Illumination (*The congregation uniting*)

**Open our hearts and minds God, that the words we hear this day**

**might be the words you would have us to hear, in this place and for this time. Amen.**

Scripture Readings

Psalm 46

O.T. pg. 480

Colossians 1: 11-20

N.T. pg. 176

One: Holy Wisdom. **All: Holy Word**

Anthem

Blessed Is the One

*C. Courtney*

Parable Time

Candace Smith

Sermon

Be Still & Know

The Rev. Jill Patterson Tolbert

**WE RESPOND TO GOD**

\* Hymn No. 819 (v. 1, 2)

Be Still, My Soul

*Finlandia*

Prayers of the People and the Lord’s Prayer (*Forgive us our sins...*)

Ritual of Friendship

The Giving of Tithes and Offerings

Offertory

\* Doxology No. 606

Praise God, from

*Old Hundredth*

Whom All Blessings Flow

\* Prayer of Dedication (*The congregation uniting*)

**Eternal God, may our offerings extend the work of your church into the beautiful world which you have made. Amen.**

\* Hymn No. 321 (v. 1, 4, 5)

The Church’s One Foundation

*Aurelia*

\* Charge and Benediction

Choral Benediction

May the Grace of God

*H. Bright*

Postlude

† † † † † † † † † † † † † † † †

**Participants in Today’s Service:**

**The Rev. Jill Patterson Tolbert**, Guest Pastor

**Owen Coats**, Liturgist

**Donna Beech**, Pianist/Organist

**The flowers on the retable** are dedicated to the Glory of God.

Cover art: *Be Still, and Know that I Am God*, by Singeflinkart.



LENTEN SEASON AT LOWER BRANDYWINE

# 40 DAYS OF SPIRITUAL PREPARATION

# OBSERVING LENT

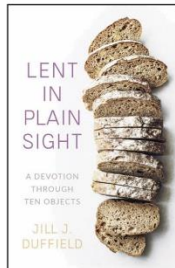
## FROM ASH WEDNESDAY TO HOLY THURSDAY

### LENT IN PLAIN SIGHT

LBPC Social Hall - 6:30pm

Thursdays: March 10, March 17,  
March 24, March 31, April 7

Starting March 10 join us to discuss  
Jill Duffield's devotional "Lent in Plain  
Sight" while enjoying a light dinner.



These welcoming,  
lightly moderated  
sessions are one  
of the ways you can  
observe the Lenten  
Season with LBPC.  
Books available in  
the church office.



### FOOD FOR THOUGHT

LBPC Social Hall - After the 10:00am Service

Sundays: March 6, March 13,  
March 20, March 27, April 3, April 10

During Lent, be sure to join us in  
the Social Hall after our Service of  
Worship for an extended time of  
fellowship. There you will find  
some fun and thought-provoking  
'Food for Thought' conversational  
prompts on the tables, as well as  
some crafts or hands-on activities  
for the children that further explore  
our "Lent in Plain Sight" theme.

A Series of Events Celebrating Lent at Lower Brandywine

## Lent In Plain Sight

### Sundays and Thursdays during Lent

All Are Invited and Welcome to Join Us



**Lower Brandywine Presbyterian Church**

101 Old Kennett Rd, Wilmington, DE 19807 (Route 52 at Old Kennett Road, across from Winterthur)  
[www.lowerbrandywine.org](http://www.lowerbrandywine.org)

LENTEN SEASON AT LOWER BRANDYWINE

# 40 DAYS OF SPIRITUAL PREPARATION

# OBSERVING LENT

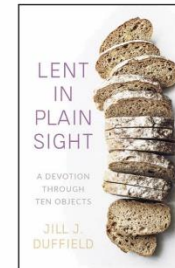
## FROM ASH WEDNESDAY TO HOLY THURSDAY

### LENT IN PLAIN SIGHT

LBPC Social Hall - 6:30pm

Thursdays: March 10, March 17,  
March 24, March 31, April 7

Starting March 10 join us to discuss  
Jill Duffield's devotional "Lent in Plain  
Sight" while enjoying a light dinner.



These welcoming,  
lightly moderated  
sessions are one  
of the ways you can  
observe the Lenten  
Season with LBPC.  
Books available in  
the church office.



### FOOD FOR THOUGHT

LBPC Social Hall - After the 10:00am Service

Sundays: March 6, March 13,  
March 20, March 27, April 3, April 10

During Lent, be sure to join us in  
the Social Hall after our Service of  
Worship for an extended time of  
fellowship. There you will find  
some fun and thought-provoking  
'Food for Thought' conversational  
prompts on the tables, as well as  
some crafts or hands-on activities  
for the children that further explore  
our "Lent in Plain Sight" theme.

A Series of Events Celebrating Lent at Lower Brandywine

## Lent In Plain Sight

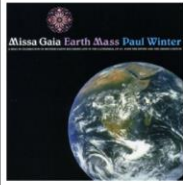
### Sundays and Thursdays during Lent

All Are Invited and Welcome to Join Us

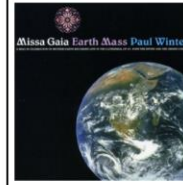


**Lower Brandywine Presbyterian Church**

101 Old Kennett Rd, Wilmington, DE 19807 (Route 52 at Old Kennett Road, across from Winterthur)  
[www.lowerbrandywine.org](http://www.lowerbrandywine.org)



The 15<sup>th</sup> annual Jonathan Beech Memorial Concert will take place on Saturday, March 26, at 2:00 PM in the auditorium of Kennett High School in Kennett Square. With the pandemic necessitating a “virtual” concert last year, it is exciting to be presenting a live concert again this year. The featured work this year is Paul Winter’s *Missa Gaia (Earth Mass)* for choir and a nine piece jazz ensemble. The Wilmington Handbell Ensemble under the direction of Kerry Dietz will also perform. This concert will benefit Children’s Hospital of Philadelphia Neuro-Oncology. Suggested donation is \$20 for adults and \$10 for students, but gifts of all amounts are appreciated. More information can be found on the website [jonathanbeechmemorialconcert.org](http://jonathanbeechmemorialconcert.org), where you can also make a donation on-line if you prefer.



The 15<sup>th</sup> annual Jonathan Beech Memorial Concert will take place on Saturday, March 26, at 2:00 PM in the auditorium of Kennett High School in Kennett Square. With the pandemic necessitating a “virtual” concert last year, it is exciting to be presenting a live concert again this year. The featured work this year is Paul Winter’s *Missa Gaia (Earth Mass)* for choir and a nine piece jazz ensemble. The Wilmington Handbell Ensemble under the direction of Kerry Dietz will also perform. This concert will benefit Children’s Hospital of Philadelphia Neuro-Oncology. Suggested donation is \$20 for adults and \$10 for students, but gifts of all amounts are appreciated. More information can be found on the website [jonathanbeechmemorialconcert.org](http://jonathanbeechmemorialconcert.org), where you can also make a donation on-line if you prefer.

EASTER WEEK AT LOWER BRANDYWINE

# HOLY WEEK SERVICES

## APRIL 10 THROUGH APRIL 17

**Palm Sunday - April 10**

10:00am – Traditional Worship Service with palm branches. [Sanctuary]  
Lesson and crafts for the children. [Classrooms]

**Maundy Thursday - April 14**

6:00pm – Our Youth Group, LIFT, will be baking bread, which will be provided for those attending the Maundy Thursday events. [Social Hall]  
7:00pm – Dinner, followed by readings and communion. [Social Hall]

**Good Friday - April 15**

7:00pm – Taizé Service of music and meditation. [Sanctuary]

**Easter Sunday - April 17**

8:30am – Join us for join an Easter Potluck Breakfast. [Social Hall]  
The Fellowship Committee is organizing a Potluck Provision Sign-Up.  
10:00am – Traditional Easter Service of Worship [Sanctuary]  
Afternoon – Easter egg hunt, table games, and crafts. [Inside/Outside]



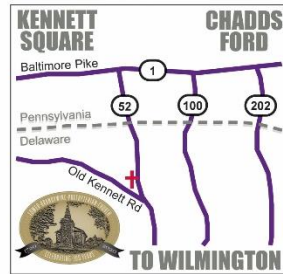
A BEACON IN THE BRANDYWINE VALLEY FOR OVER 300 YEARS

**WHERE**



Photo by Hank Davis

**HOW TO GET THERE**



**COMMEMORATION**



**Lower Brandywine Presbyterian Church**

101 Old Kennett Rd, Wilmington, DE 19807 (Route 52 at Old Kennett Road, across from Winterthur)  
[www.lowerbrandywine.org](http://www.lowerbrandywine.org)

EASTER WEEK AT LOWER BRANDYWINE

# HOLY WEEK SERVICES

## APRIL 10 THROUGH APRIL 17

**Palm Sunday - April 10**

10:00am – Traditional Worship Service with palm branches. [Sanctuary]  
Lesson and crafts for the children. [Classrooms]

**Maundy Thursday - April 14**

6:00pm – Our Youth Group, LIFT, will be baking bread, which will be provided for those attending the Maundy Thursday events. [Social Hall]  
7:00pm – Dinner, followed by readings and communion. [Social Hall]

**Good Friday - April 15**

7:00pm – Taizé Service of music and meditation. [Sanctuary]

**Easter Sunday - April 17**

8:30am – Join us for join an Easter Potluck Breakfast. [Social Hall]  
The Fellowship Committee is organizing a Potluck Provision Sign-Up.  
10:00am – Traditional Easter Service of Worship [Sanctuary]  
Afternoon – Easter egg hunt, table games, and crafts. [Inside/Outside]



A BEACON IN THE BRANDYWINE VALLEY FOR OVER 300 YEARS

**WHERE**

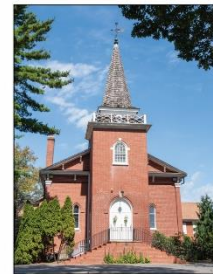
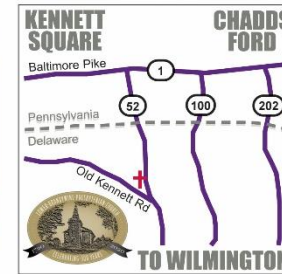
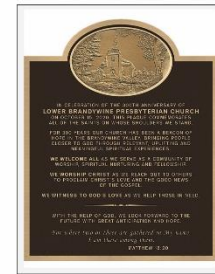


Photo by Hank Davis

**HOW TO GET THERE**



**COMMEMORATION**



**Lower Brandywine Presbyterian Church**

101 Old Kennett Rd, Wilmington, DE 19807 (Route 52 at Old Kennett Road, across from Winterthur)  
[www.lowerbrandywine.org](http://www.lowerbrandywine.org)