



Pundit



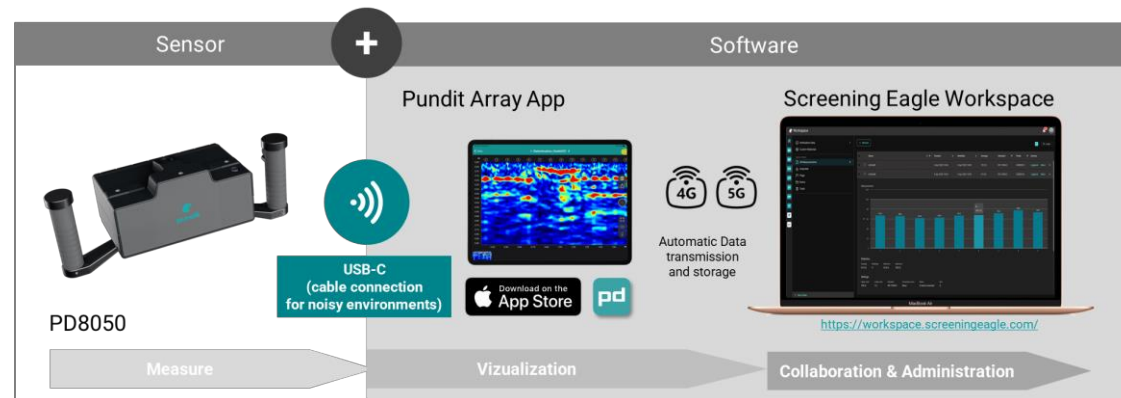
PD8050

---

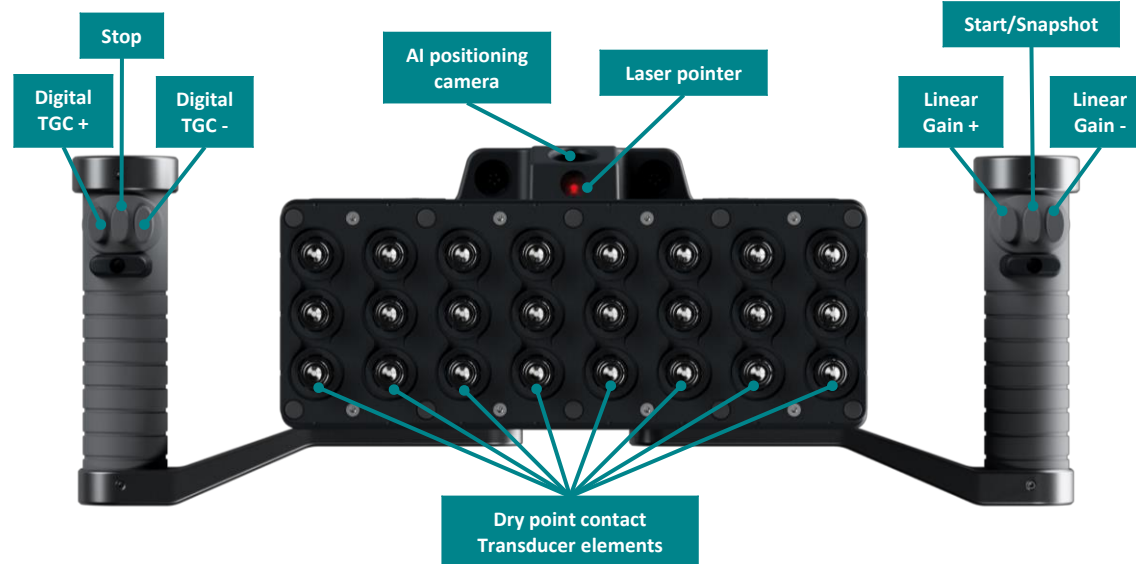
## Quick Reference

---

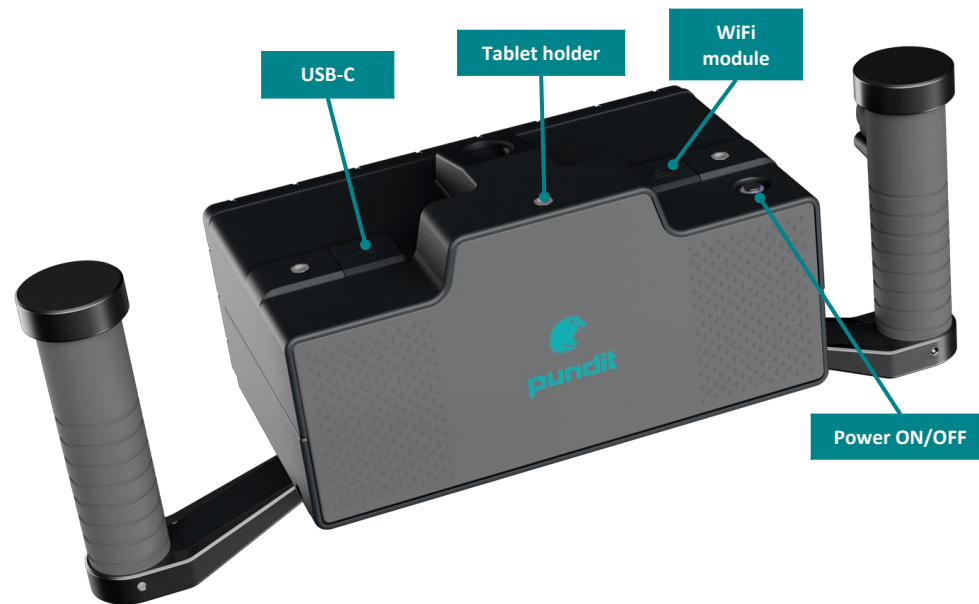
## PD8050 System



## Instrument Overview



## Instrument Overview



Modularity



Single handle



8 channel



16 channel

## Accessories



79330235

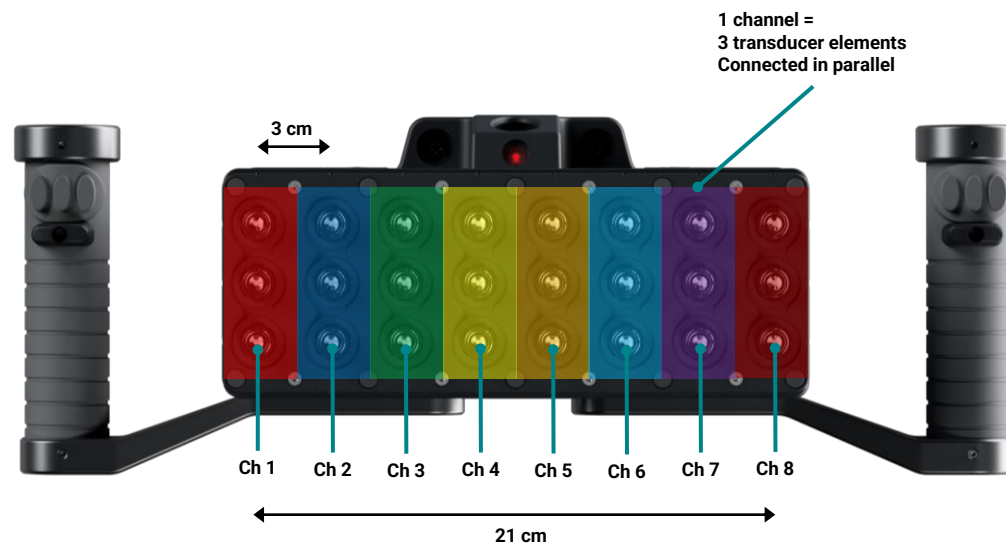
**UTH100 Universal tablet holder for Pundit PD**



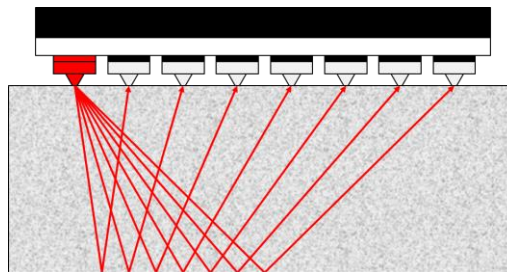
79330345

**UHA100 Universal tablet holder with chest harness**  
Can also be used as an iPad stand

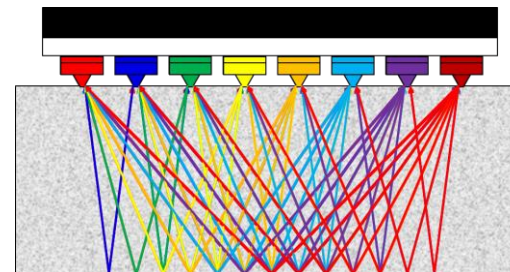
## Technology - 8 channels



## Technology - Operating principle



**One channel transmits**  
The signal is received on the other 7 channels

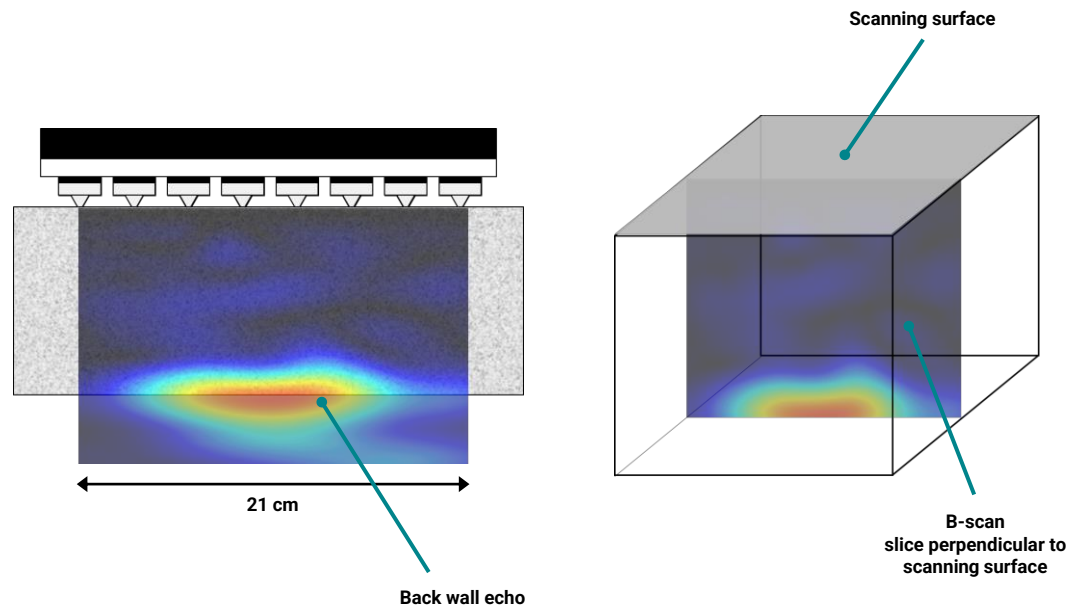


**Each channel transmits in turn**  
A complete cycle is completed in ms  
The individual signals are used to create a  
B-scan image in real time



## Technology - B-scan

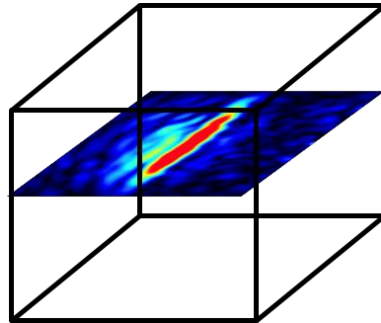
Real time imaging



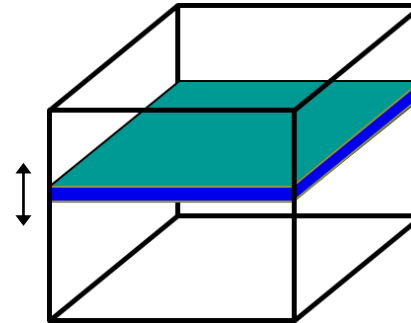
## Technology - C-scan or Time Slice



Real time imaging



A time slice or C-scan shows the amplitude of the signal at a chosen depth



We can adjust the thickness of the slice and move it to any depth

## Recommended Workflow



### Tips on structural assessment.

Structural assessment with the PD8050 is typically done for the following cases:-

1. Thickness measurement – e.g. tunnel lining thickness
2. Concrete quality assessment by means of ultrasonic pulse velocity measurements
3. Verification of the presence or absence of structural defects, in particular voids, delaminations and honeycombs.
4. Verification of the presence or absence of voids inside tendon ducts.

In all cases a good starting point is the recommended measurement settings

Case 1 – It is important to know the expected thickness of the tunnel and select the appropriate depth of field. This will usually be the intermediate range. Because of the large amount of reinforcement used in tunnels, it is typically not advisable to use the near field setting as this has a reduced transmission voltage.

Case 2 – In this case it is necessary to know the thickness of the element being tested and to set the appropriate depth of field.

Case 3 – For this investigation it is necessary to find out as much information as possible on the suspected default. Are there drawings of the structure available? How thick is the structure? What kind of defect is suspected? (e.g. a void caused by concrete not flowing freely due to dense reinforcement). Is the approximate depth of the suspected defect known? Have any destructive tests been carried out to confirm the presence of a defect? Once this is known, the starting point is to try and locate a position on the structure where there is a back wall echo clearly visible and then to compare this with the images taken at the suspected defect locations.

Case 4 – This technique involves locating the tendon duct with a GPR instrument and then carrying out a full 3D matrix scan along the duct to look for variations in amplitude which indicates the likely presence of voids. There are a number of guidelines available on this technique that the user is advised to consult for further information.

Other than case 4, the best way to proceed is to try and detect a clean back wall image at some point on the structure.

## Recommended Workflow



### Tips on obtaining a good back wall image.

- Perform a provisional investigation. Without saving any data, move the sensor around the surface to try to locate a back wall echo.

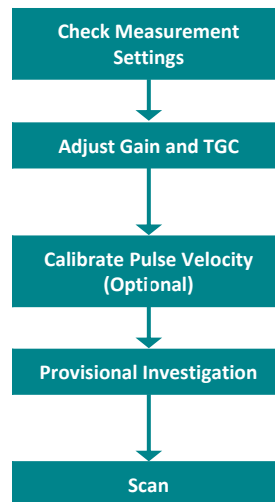
If no back wall is immediately visible, try the following:-

- Try rotating the probe diagonally to reduce the influence of reinforcement.
- Try increasing the linear gain and digital TGC if no back wall echo is immediately visible.  
(Note: in order to do this the auto gain function must be switched off.)
- If this fails, try increasing the analog gain and TGC.
- If this still does not work, then it may be necessary to use a lower frequency, either by setting the depth of field to far field, or by manually adjusting,

### Reasons why a back wall image may not be visible:

- Coating on the surface with de-bonding to the concrete. Typically results in a totally red reflection from the top of the scan.
- Near to surface defect. Typically results in a totally red reflection from near the top of the scan.
- The element is too thick. Typically, the scan will be completely blue if there are no objects present.
- There is too much reinforcement or poor concrete quality causes too much attenuation.
- There are voids or honeycombs in the path. Typically, the objects will be visible as significant red, orange, yellow echoes.
- There are delaminations not visible due to destructive interference which block the path to the back wall. This occurs when the delaminations or voids have very rough surfaces which scatter the reflections. The scan may appear totally blue in this case, even though there may be large defects visible. This has been known to occur in steel fibre reinforced concrete and verified by destructive testing.

## Recommended Workflow



## Recommend Measurement Settings



Initial settings recommended to give a reasonable image on concrete without the need to calibrate the pulse velocity on the test object.

Measuring Presets	
Measuring mode	Line scan
Depth of field	Intermediate field
A.I. Positioning	Off
X-spacing	21
Image Stabilizer	1
Units	Metric or Imperial depending on region

Advanced Measuring Presets	
Half Cycle	Off
Analog Gain	36 dB
Analog TGC	0 dB
Pulse Delay	8 ms

Variation
Full matrix 3D for 3D imaging
Grid scan for large area heat maps
Near field for objects < 30 cm thick
Far field for objects > 1m thick
ON (Requires AI measurement tape)

Variation
10 dB for objects thick objects (ca. 1m)

## Recommend Measurement Settings



Initial settings recommended to give a reasonable image on concrete without the need to calibrate the pulse velocity on the test object.

Image Processing	
Auto Gain	ON
Global Pulse Velocity	2600
Ascan	Signal and Envelope

Variation
If auto gain is off, then set Linear Gain and Digital TGC to default values (0, 0)

Advanced Image Processing	
Surface Wave Cancellation	OFF
Raw Data Offset (µs)	-30

Variation
Removes noise caused by surface waves
Only change this if it can be calibrated with 1 <sup>st</sup> and 2 <sup>nd</sup> back wall echoes

## Depth of Field – Custom Settings

If desired the depth of field settings can be individually adjusted



Settings	
<b>Tx Frequency (kHz)</b>	Low frequency – reduces resolution close to surface, increases penetration depth  High frequency – increased resolution close to surface, decreases penetration depth
<b>Tx Voltage (V)</b>	Adjust transmission signal strength (Note! – On adjusting the voltage there is a short delay until it reaches the new voltage level)
<b>Max Transmission Time (μs)</b>	Adjusts the maximum transmission range

Custom

Tx Frequency [kHz]

25

Tx Voltage [V]

150

>

Max Transmission Time (μs)

2'000



## Analog Gain and TGC

For most test objects it is recommended to leave the Analog Gain and TGC at the default values and to use the digital gain and TGC in Image Processing to obtain a good image.

TIP – double tap on the slider to reset to the defaults (36, 0)

However, particularly for deep objects it may be desirable to increase the analog gain and TGC. In total there is 80 dB of gain available.

NOTE! If analogue gain and TGC are adjusted, remember to reset to the default values on completion of the test.

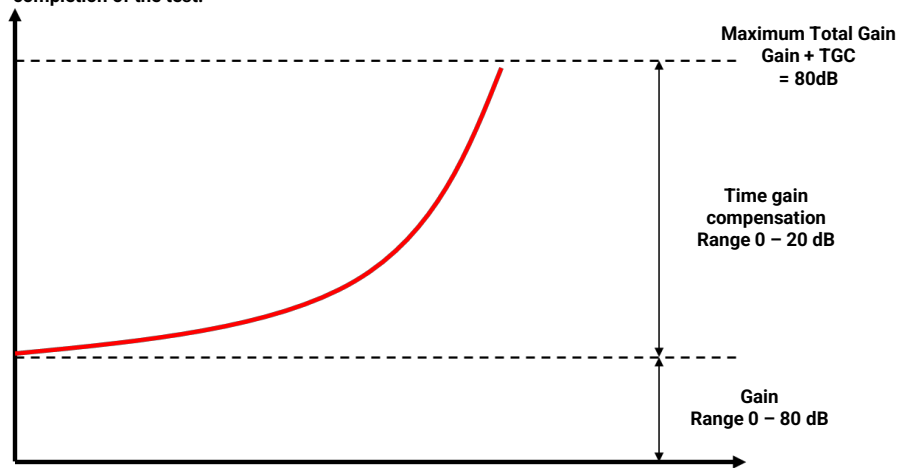


Analog Gain (dB)

36

Analog TGC (dB)

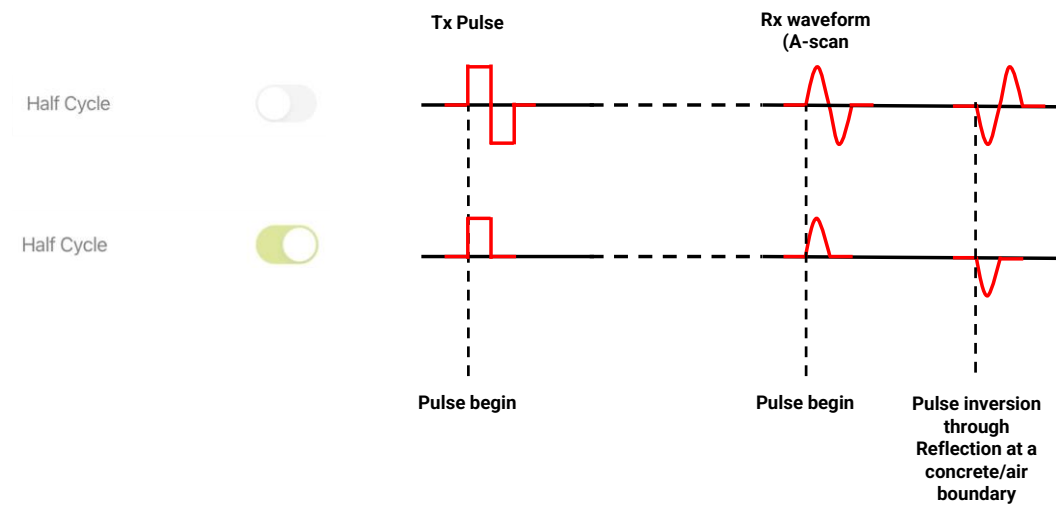
0



## Advanced Settings – Half Cycle



Can help to distinguish near surface objects that are close to each other.



## Advanced Settings – Image Stabilizer



Used to reduce flicker on the real time B-scan image

The image displayed on screen is a combination of the latest real-time image data combined with a percentage of the previous image data. The percentage is determined by the slider.

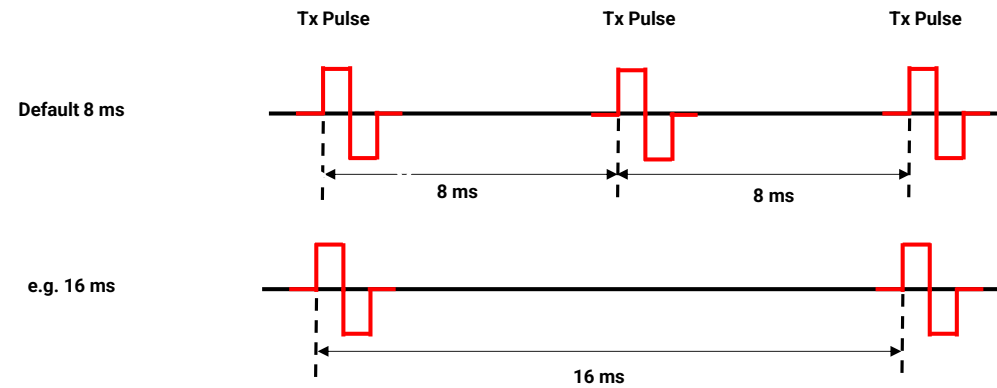
Slider set to 1 = no stabilization – Image presentation is immediate but it flickers

Slider set to 8 = maximum stabilization – Image takes longer to build up, but there is no flicker

## Advanced Settings – Pulse Delay



Introduces a delay between transmission pulses.  
Functionality used for research.

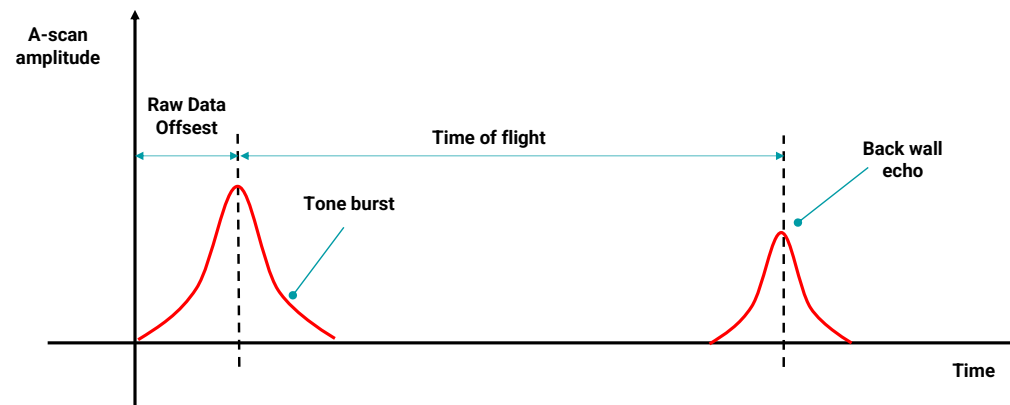


## Advanced Settings – Raw Data Offset



Used for accurate depth estimations

Raw Data Offset ( $\mu\text{s}$ )

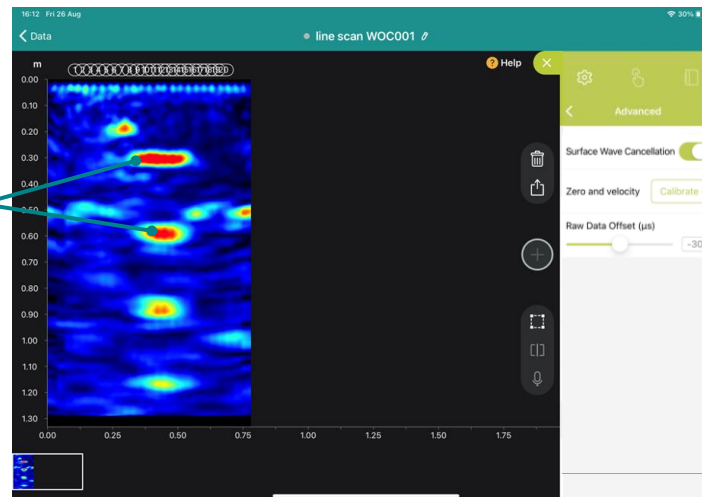


## Pulse Velocity Calibration – 1<sup>st</sup> and 2<sup>nd</sup> Back Wall Echo



This method provides the most accurate depth information. It requires two clear back wall echoes and must be carried out at a location of known depth

1<sup>st</sup> and 2<sup>nd</sup> back wall echoes are required for the calibration



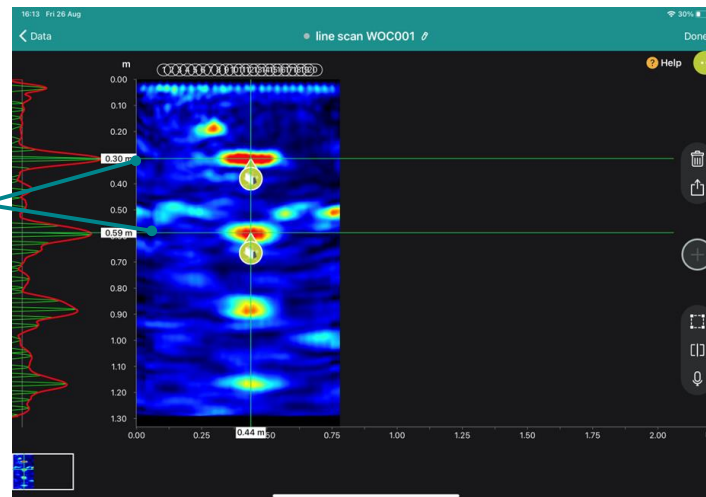
Calibrates both raw data offset and global pulse velocity

## Pulse Velocity Calibration – 1<sup>st</sup> and 2<sup>nd</sup> Back Wall Echo



Swipe in from the left with one finger to show the A-scan

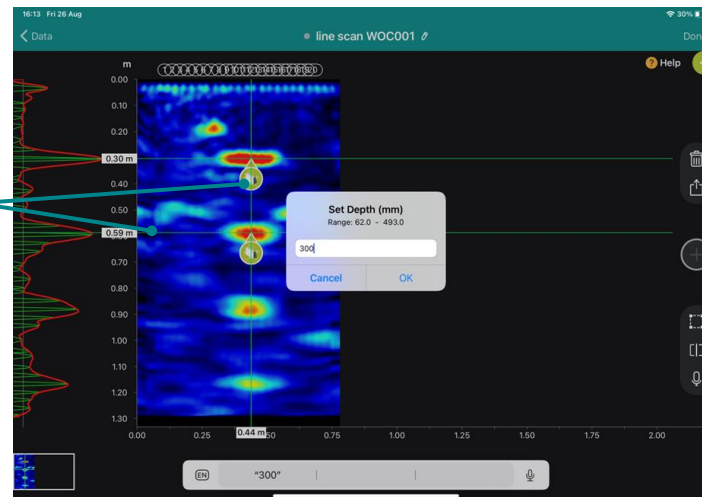
Align the cursors to the peaks of the 1<sup>st</sup> and 2<sup>nd</sup> back wall echoes



## Pulse Velocity Calibration – 1<sup>st</sup> and 2<sup>nd</sup> Back Wall Echo



Tap on the 1<sup>st</sup> back wall echo tag to enter the known depth of the test object



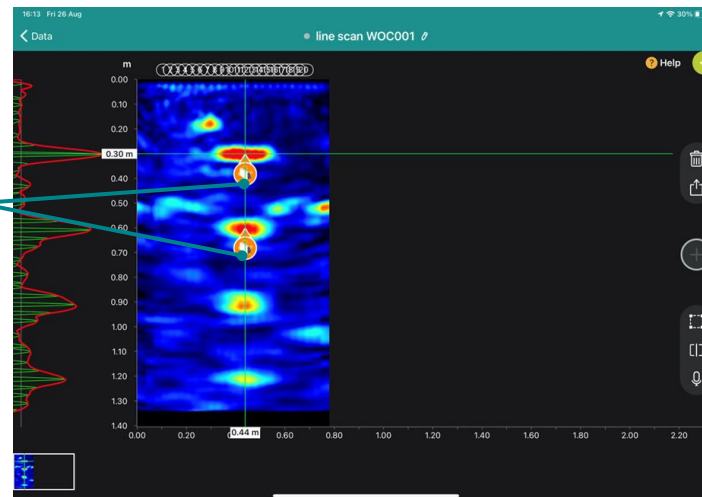
Tap on "Done" to complete the calibration



## Pulse Velocity Calibration – 1<sup>st</sup> and 2<sup>nd</sup> Back Wall Echo



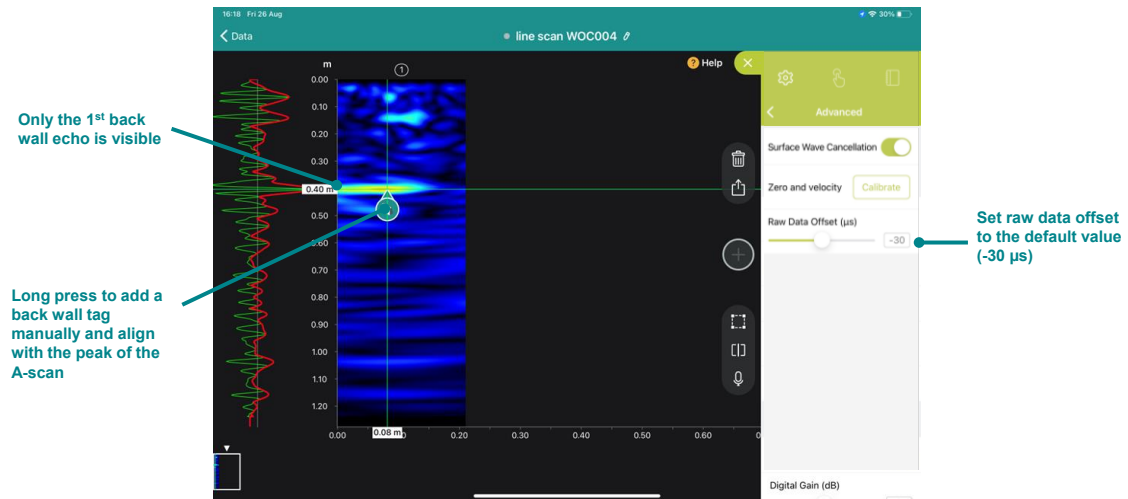
Orange colour indicates that the tag is being used to calibrate the pulse velocity



## Pulse Velocity Calibration – Only One Back Wall Echo



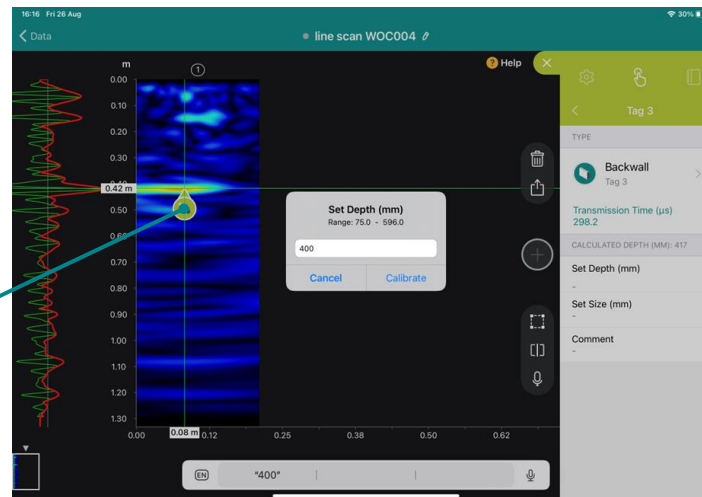
A 2<sup>nd</sup> back wall echo is not always available. If only one back wall echo is available, then this method is recommended.



## Pulse Velocity Calibration – Only One Back Wall Echo



Tap on the tag to open the information panel

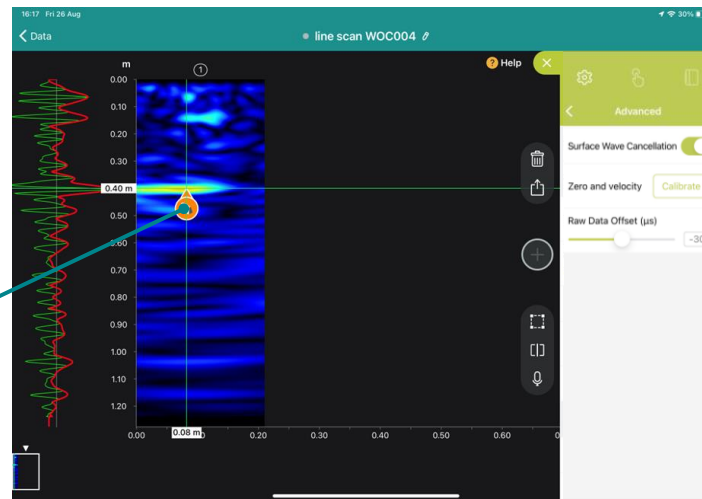


Tap on "Set depth" to enter the known depth, which calibrates the global pulse velocity

## Pulse Velocity Calibration – Only One Back Wall Echo



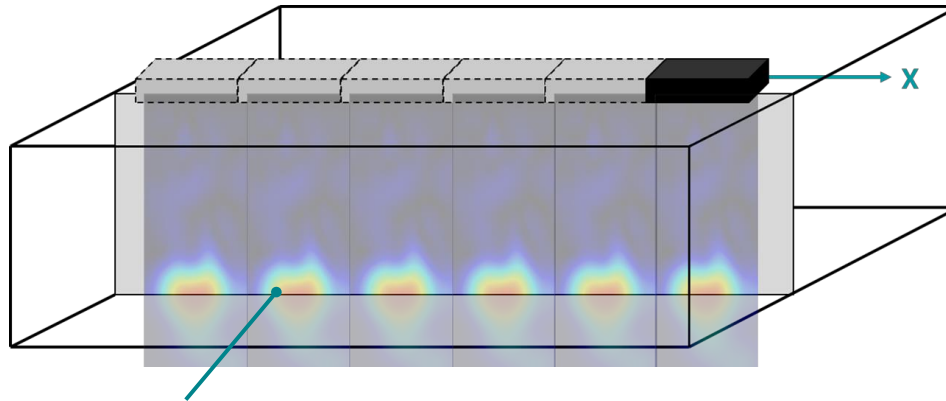
Orange colour indicates that the tag is being used to calibrate the pulse velocity



## Workflow - Line Scan – Data Collection



Scan parallel to the long axis of the sensor. Combine B-scans with or without an overlap to create a line scan.



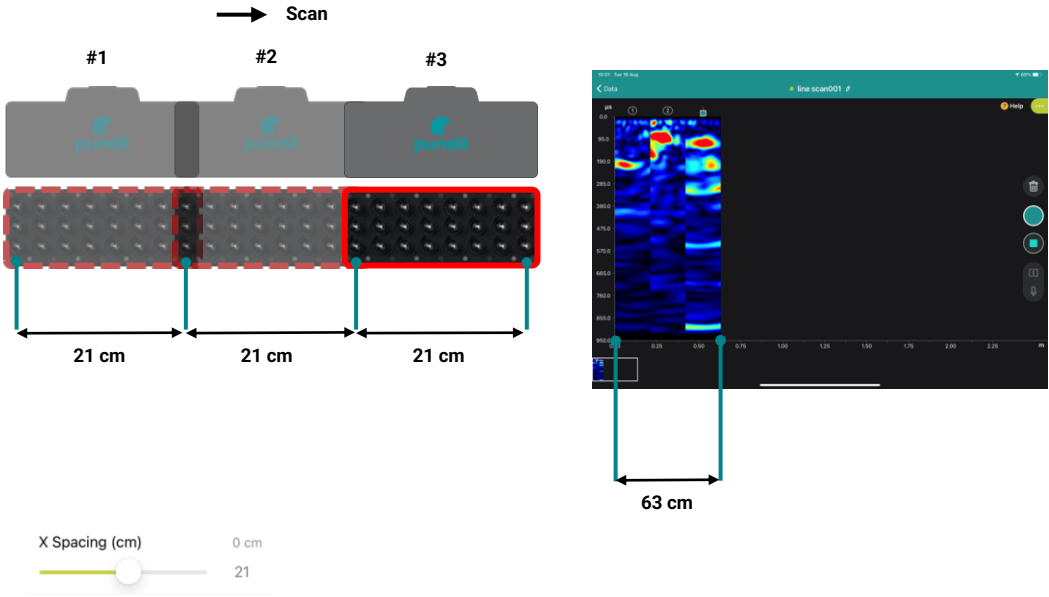
Analog gain and TGC can only be adjusted before saving the first B-scan  
After that the controls are blocked

Digital gain and TGC can be adjusted at any time and also on the completed scan

Workflow – Line Scan – Default Spacing



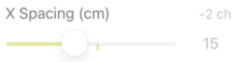
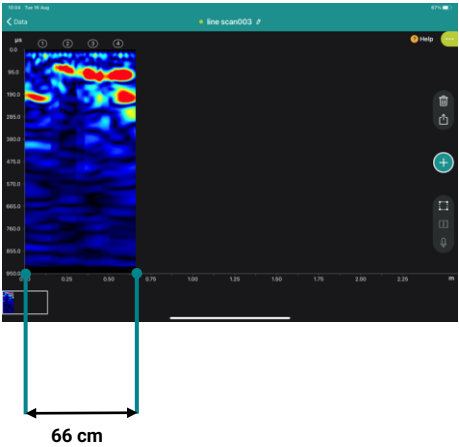
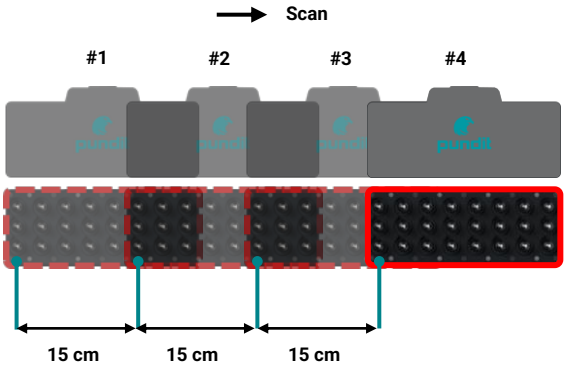
Unless AI positioning is being used, it is necessary to set the X spacing, i.e. how far you wish to move the sensor between snapshots.



Workflow – Line Scan – X Spacing Overlap



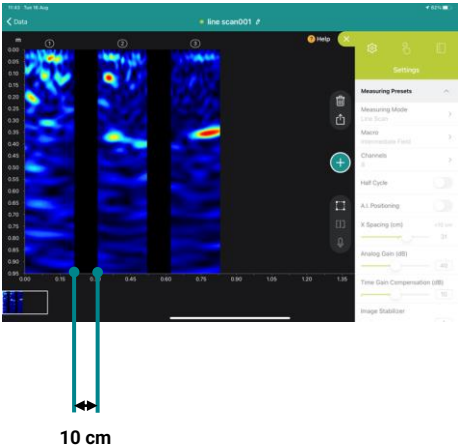
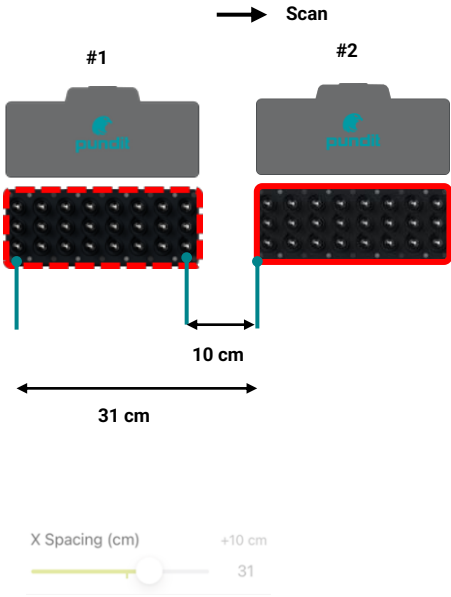
Smoother images can be achieved by overlapping B-scans. In this case it is necessary to set the number of channels you wish to overlap.



Workflow – Line Scan – X Spacing > 21 cm



For quicker scans over greater distances it is possible to leave a gap between B-scans. Particularly useful when scanning over large distances when looking for larger defects.

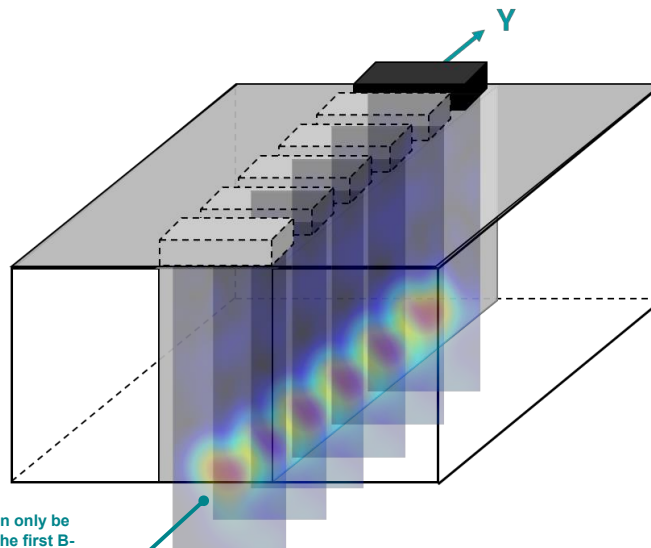




## Workflow – Full 3D Matrix – Data Collection



Scan parallel to the short axis of the sensor.



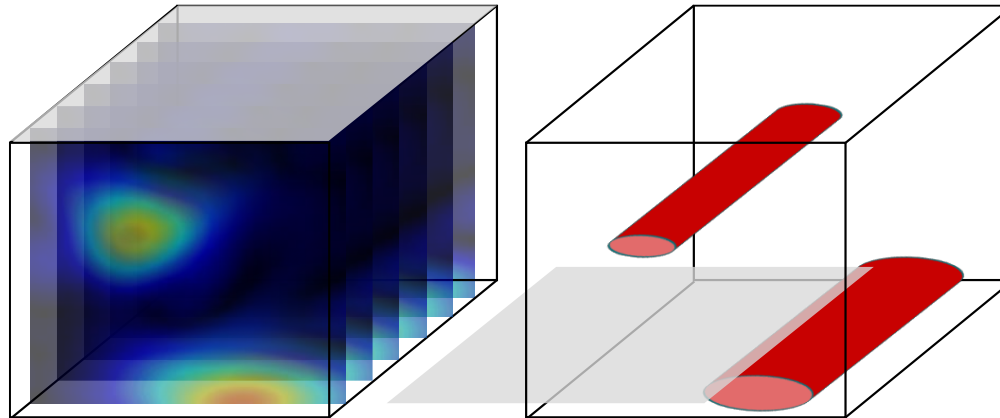
Analog gain and TGC can only be adjusted before saving the first B-scan  
After that the controls are blocked

Digital gain and TGC can be adjusted at any time and also on the completed scan

## Workflow – Full 3D Matrix – Image Creation



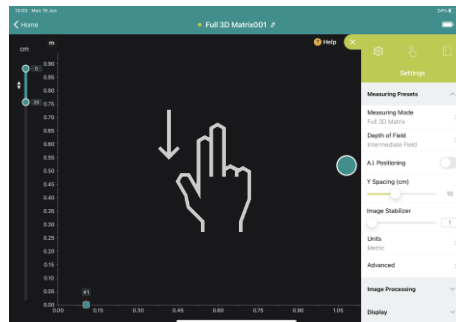
B-scans are interpolated to create 3D images up to 1.5m in length.



## Workflow – Full 3D Matrix – First Snapshot

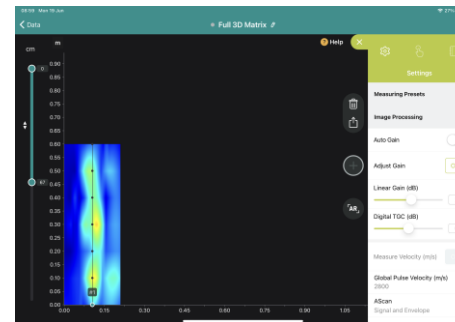


Gain and TGC can be adjusted before the first snapshot is taken. Switch to the B-scan view to adjust the transmission parameters as required before commencing with the scan.



Time Slice View

Swipe down with two fingers to view B-scan



B-scan View

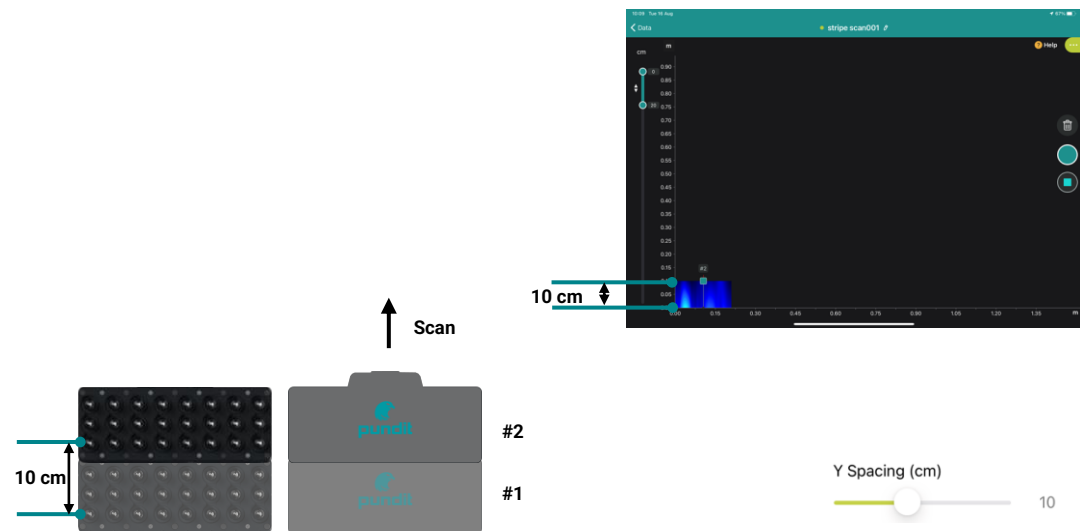
Adjust gain and TGC

Swipe down with two fingers to revert to time slice view

## Workflow – Full 3D Matrix– 2nd Snapshot



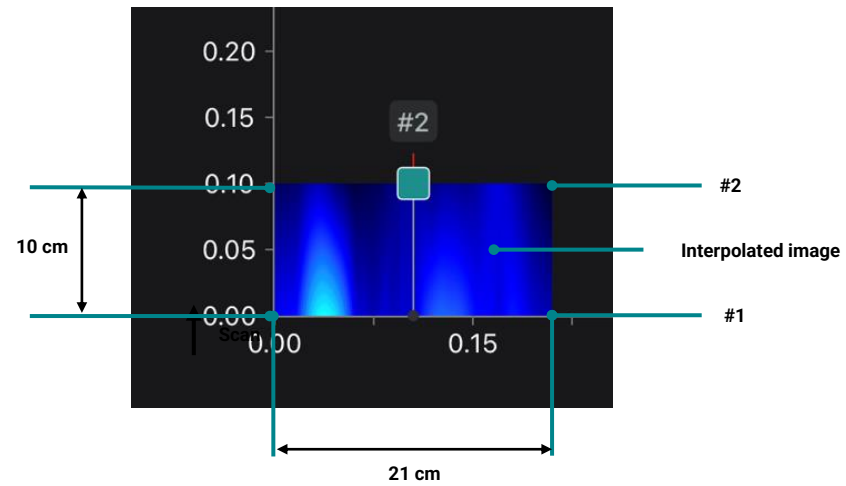
Unless AI positioning is being used, it is necessary to set the Y spacing, i.e. how far you wish to move the sensor between snapshots.



## Workflow – Time Slice View - Detail



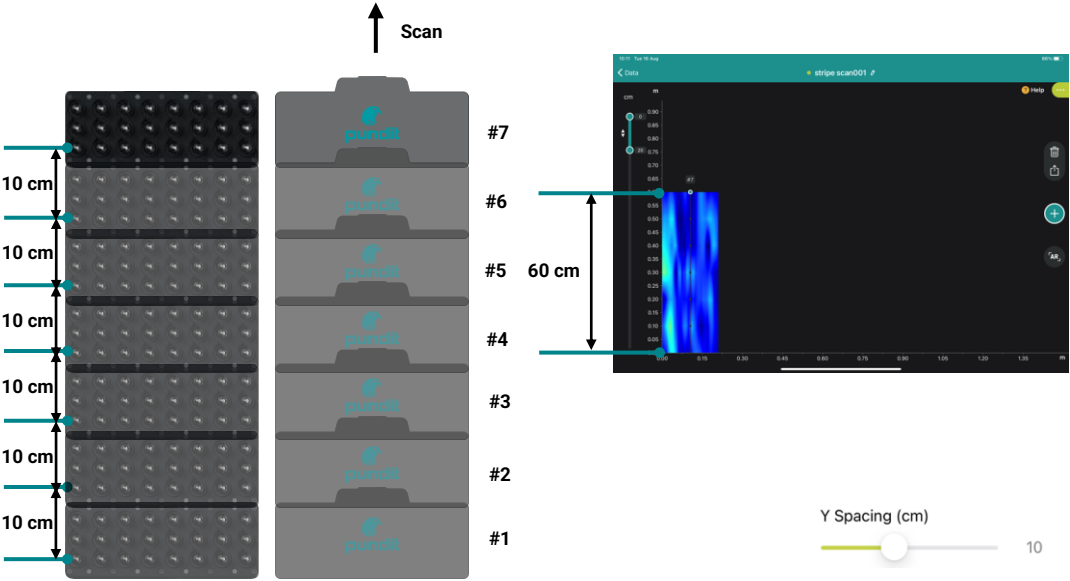
Unless AI positioning is being used, it is necessary to set the Y spacing, i.e. how far you wish to move the sensor between snapshots.



Workflow – Full 3D Matrix– 2nd Snapshot




The maximum length of a Full 3D Matrix scan is 1.5m.



Workflow – Full 3D Matrix – Review Mode



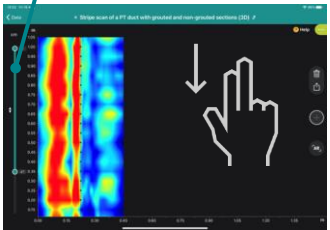
Tap to select B-scan



**B-scan View**

Swipe down with two fingers to view Time Slice

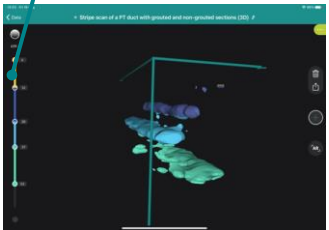
Slider sets slice thickness for both Time Slice View and 3D View



**Time Slice View**

Swipe down with two fingers to view 3D

Slider sets break points for colour layers



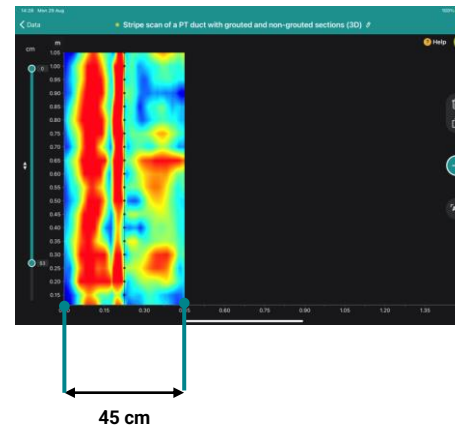
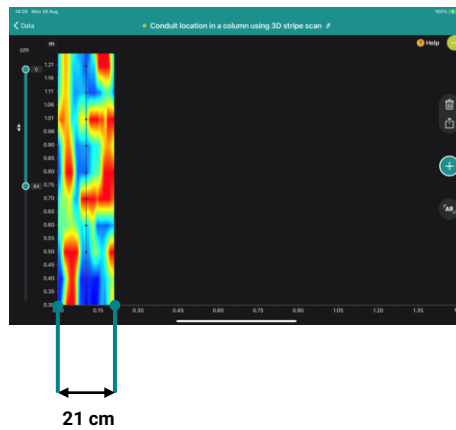
**3D View**

Swipe down with two fingers to view B-scan

## Workflow – Full 3D Matrix – 8 channel / 16 channel



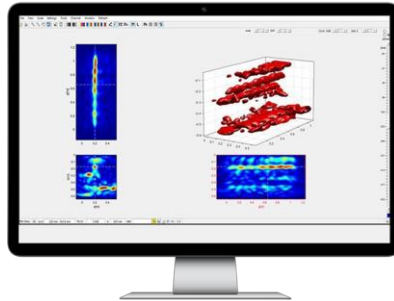
Multiple 3D Matrix scans can be combined to create larger volume scans using the optional Pundit Vision Software.





## Workflow – Post-processing and Analytics Software

Advanced visualization and analysis of ultrasonic pulse-echo data.



Pundit Vision

### Phase evaluation

Obtain more information about material composition based on phase evaluation

### Combine your data

By combining 3D Matrix scans or line scans you can create larger volume 3D images.

Combine orthogonal 3D scans for maximum information

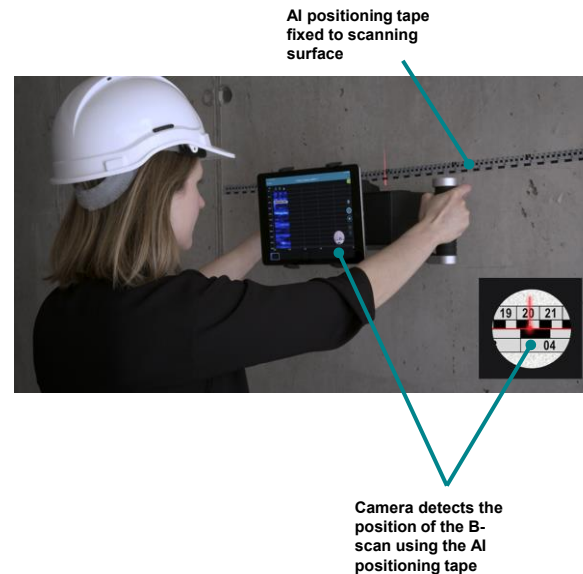
## Workflow – AI Positioning

Enables faster and more precise data acquisition.

- Can be used both with Line scan and Full 3D Matrix scan
- Up to 10 tapes can be connected in series for longer line scans up to 15 m.



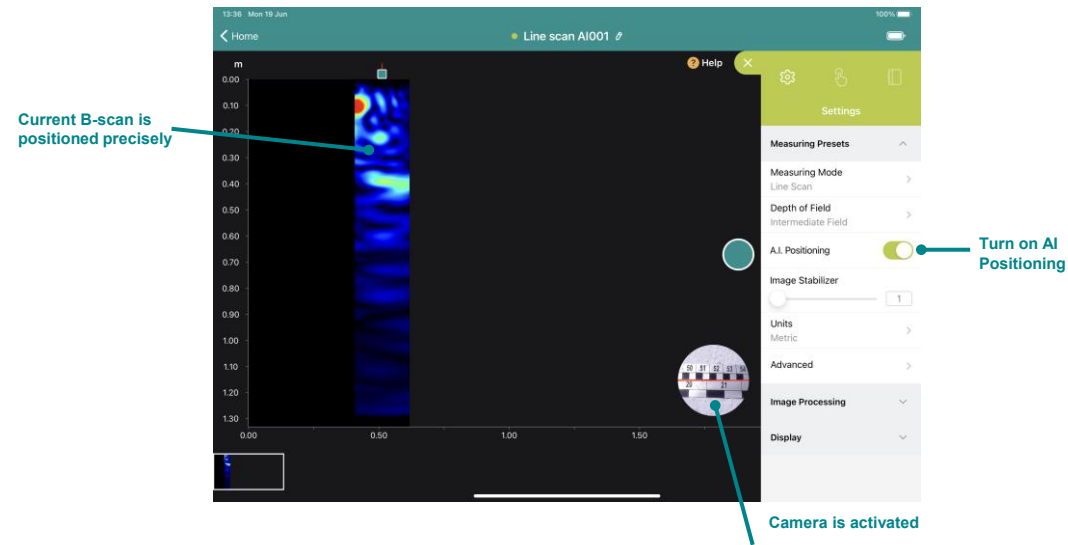
AI positioning tape accessory  
32730418S  
(Set of 10x 1.5 m tapes)



## Workflow – AI Positioning



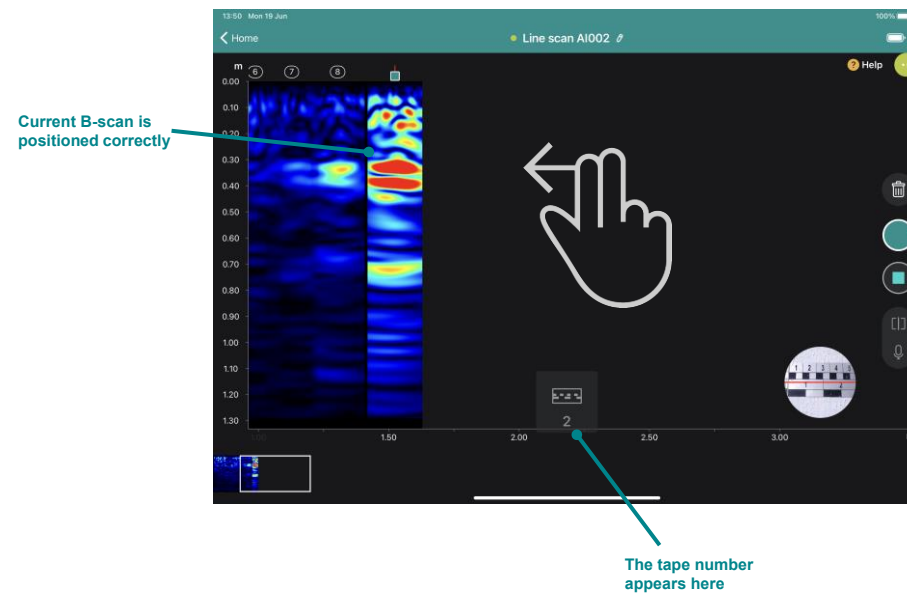
**Faster scans** – does not require constant spacing or careful placement of the sensor. As long as the tape is visible in the camera window, the B-scan will be placed in the correct position.



## Workflow – AI Positioning – Multiple Tapes



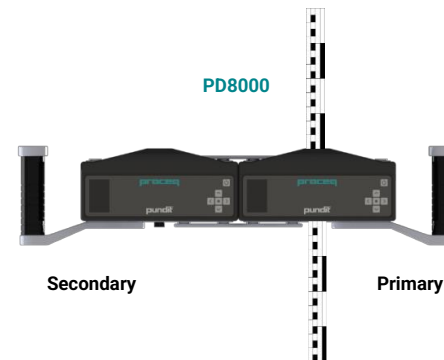
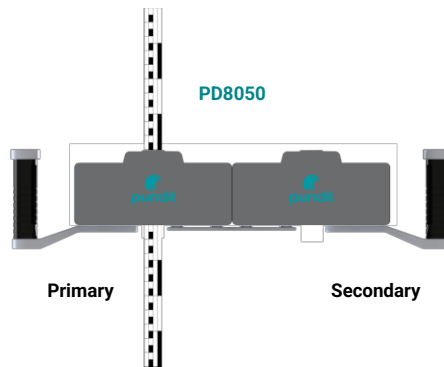
When working with multiple tapes it is necessary to inform the system which tape is being used.  
E.g. Swipe left with two fingers to move to the next tape



## Workflow – AI Positioning – 16 channel tape position



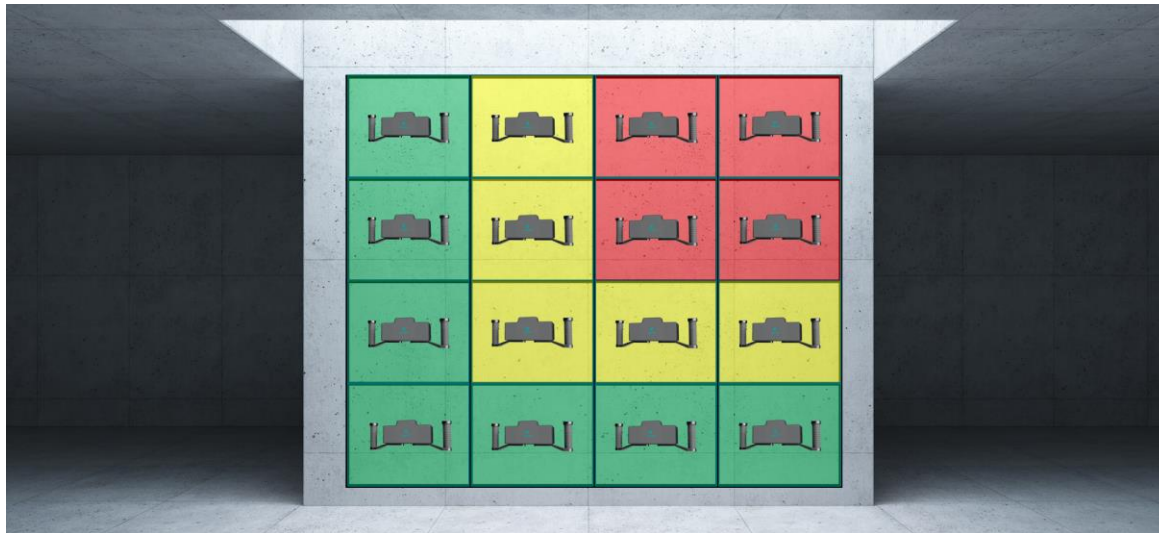
When using AI positioning for Full 3D Matrix scans with the 16 channel instrument, there is a difference between the PD8000 and PD8050 versions



## Workflow – Grid Scan– Data Collection



One measurement is made in each cell to create a colour-coded heat map of back wall depth or pulse velocity  
Useful for uniformity testing and for identifying weak or suspect areas



## Workflow – Grid Scan – Set-up



The grid that you set up here corresponds to a real grid defined on the structure

The screenshot shows the 'Grid Scan001' setup screen in the Pundit app. The interface includes a depth scale on the left (0.00 to 1.30 m), a grid of points in the center, and a settings menu on the right. Annotations with arrows point to specific features:

- Drag or long press to type in grid size (max 338 cells e.g. 18 x 18)**: Points to the grid area.
- Tap to set cell size 10 cm to 200 cm**: Points to the bottom left corner of the grid.
- Set starting co-ordinates for grid**: Points to the bottom left corner of the grid.
- Select Backwall Depth or Pulse Velocity**: Points to the 'Data Interest' option in the settings menu.
- Tap when ready**: Points to the bottom right corner of the grid.

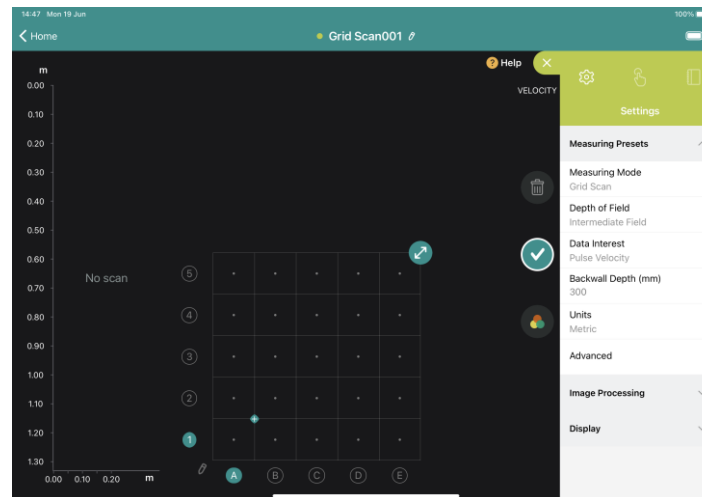
The settings menu on the right includes the following options:

- Measuring Presets
- Measuring Mode: Grid Scan
- Depth of Field: Intermediate Field
- Data Interest: Backwall Depth (selected), Global Pulse Velocity (m/s)
- Units: Metric
- Advanced
- Image Processing
- Display

## Workflow – Grid Scan – Additional Set-up Pulse Velocity



In order to calculate the pulse velocity, it is necessary to enter the known back wall depth.  
Note; for structures of varying depth it is possible to adjust individual cells later.

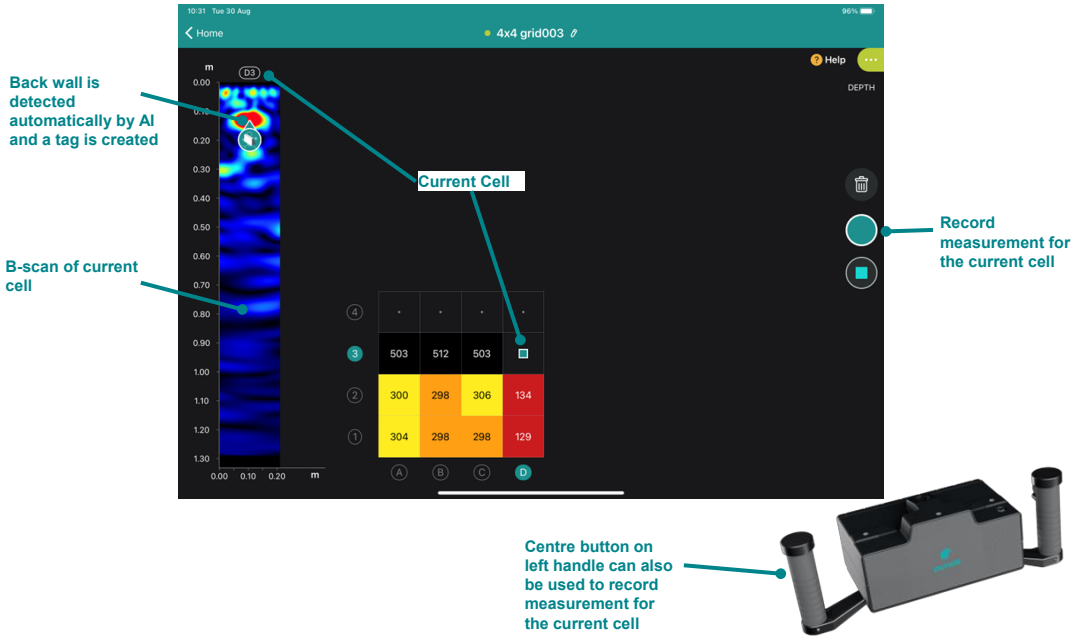




Workflow – Grid Scan – Measurement Screen



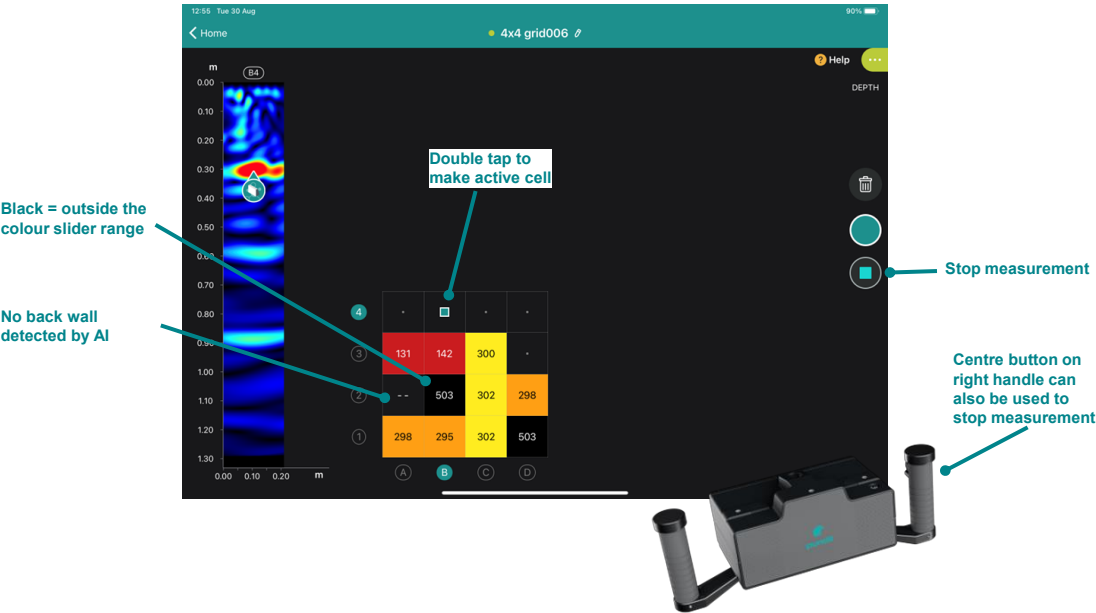
The grid scan relies on an AI function to automatically detect the back wall echo. If it is unable to detect the back wall, the user may set the tag manually.



Workflow – Grid Scan – Measurement Screen Actions



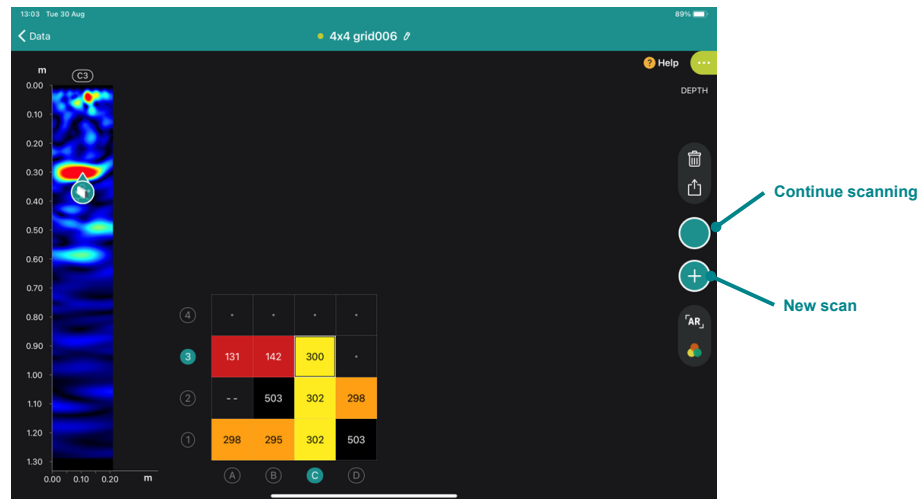
When a measurement is taken, the next cell automatically becomes the active cell unless the user wishes to change this manually.



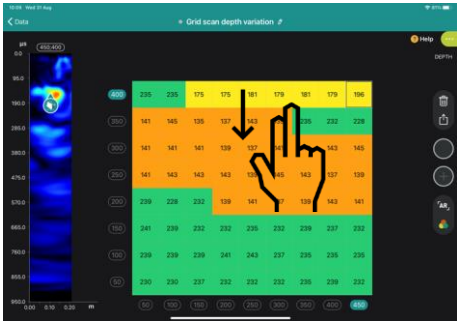
## Workflow – Grid Scan – Re-open a saved file



Grid scans can cover very large areas. It is possible to take a break from scanning, then re-open the file and continue where you left off.

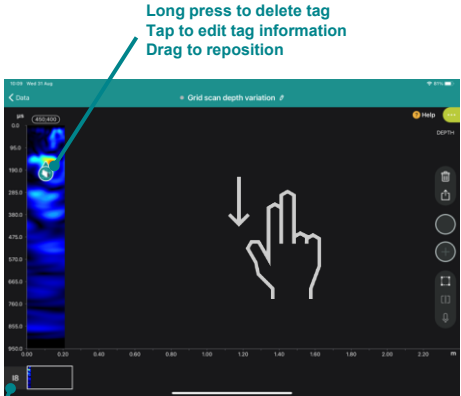


Workflow – Grid Scan – Review Modes



Grid Scan View

Swipe down with two fingers to view B-scan of active cell



B-scan View

Swipe down with two fingers to revert to Grid Scan View

Tap to select B-scan

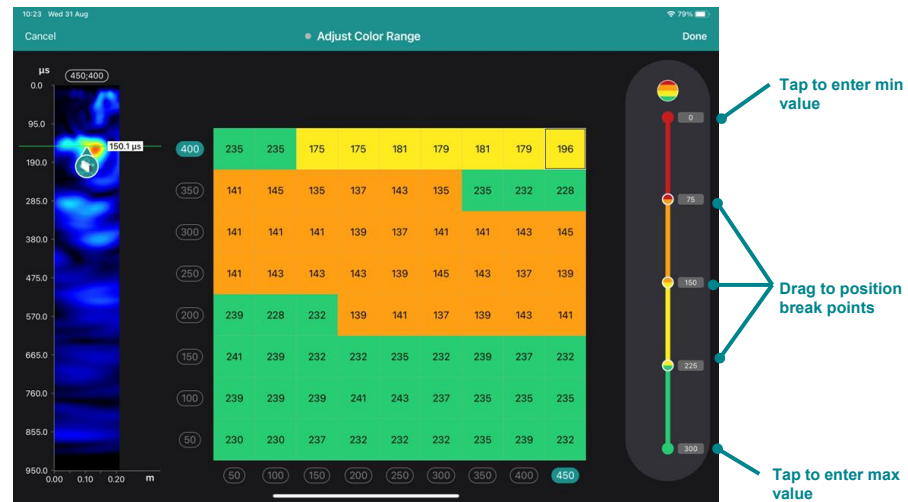
## Workflow – Grid Scan – Review Screen



## Workflow – Grid Scan – Adjust Colour Slider



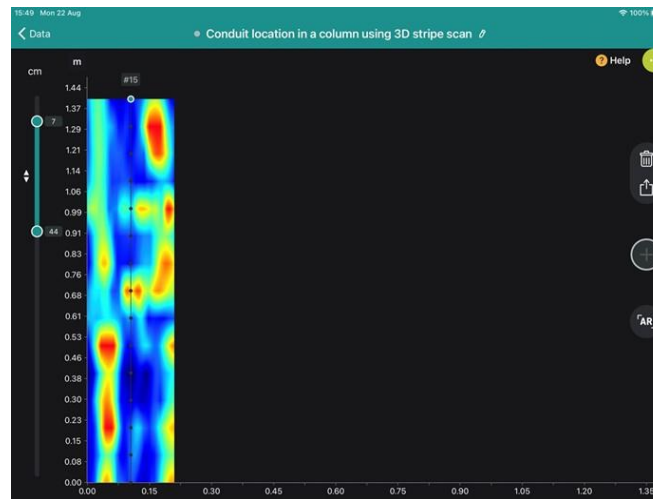
The colour slider allows you to quickly highlight weak spots and suspect areas.  
Useful for setting a minimum thickness or an acceptable pulse velocity.



## Workflow – Augmented Reality

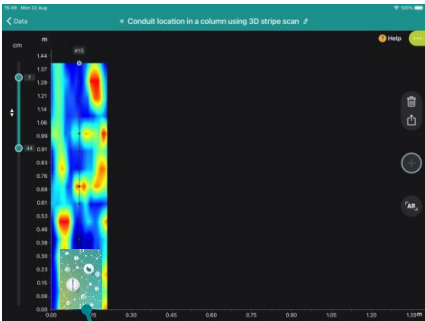


Augmented reality allows the scan to be projected onto the surface of the test object

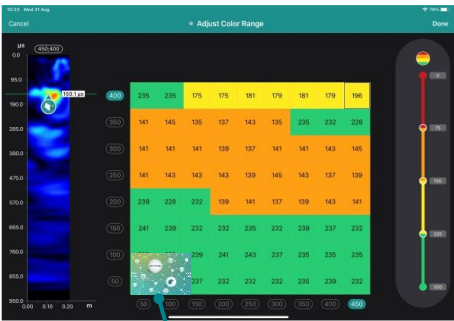


Activate AR to project the scan onto the surface of the test object

Workflow – Augmented Reality – Marker Position



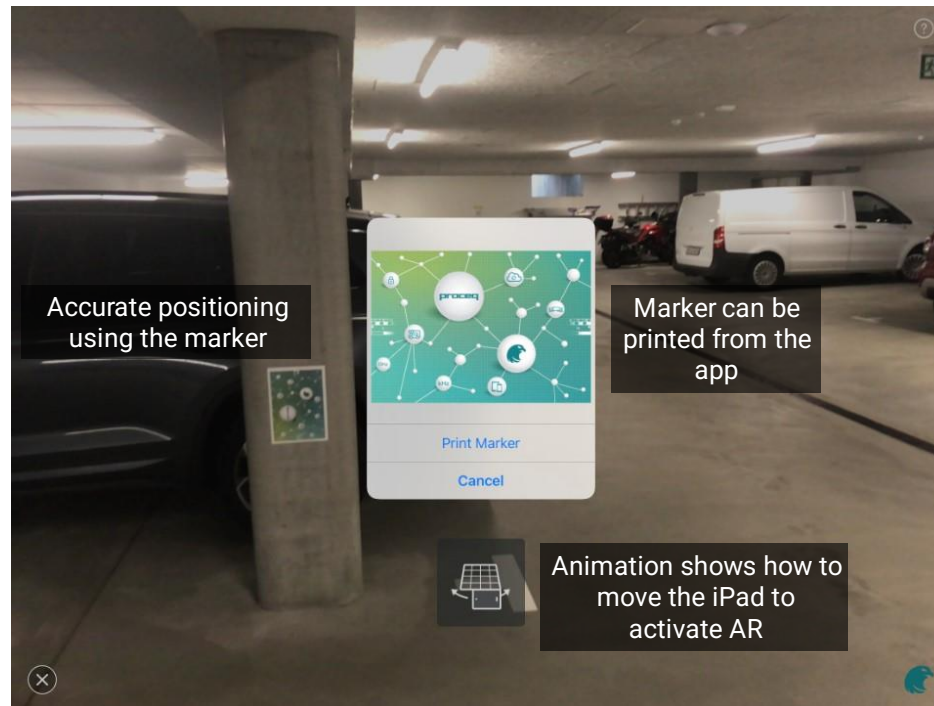
AR marker aligns with bottom center of a 3D scan



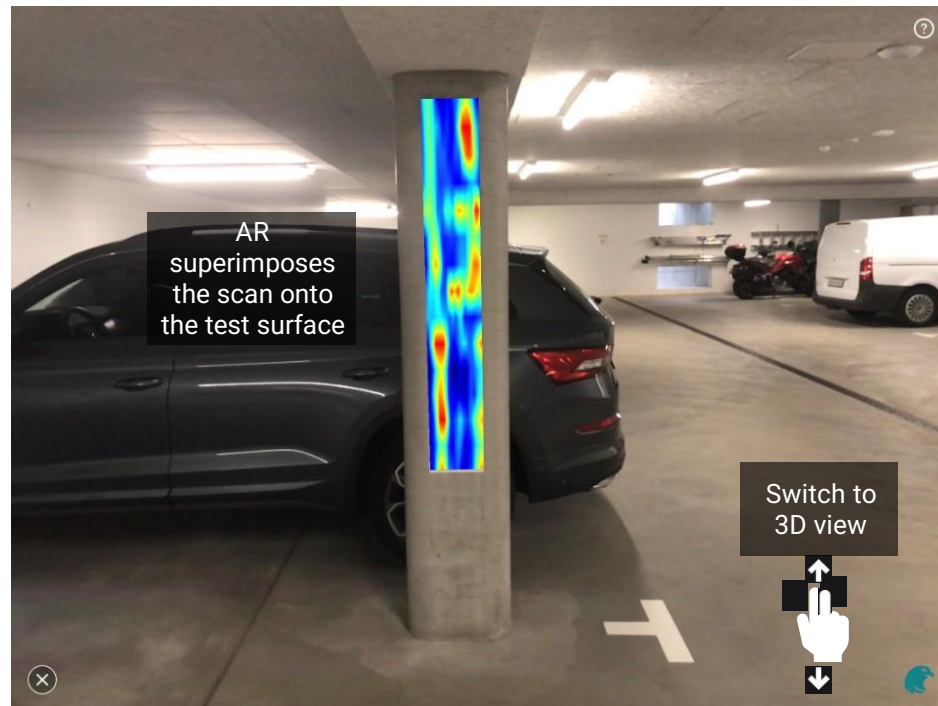
AR marker aligns with bottom left of a grid scan



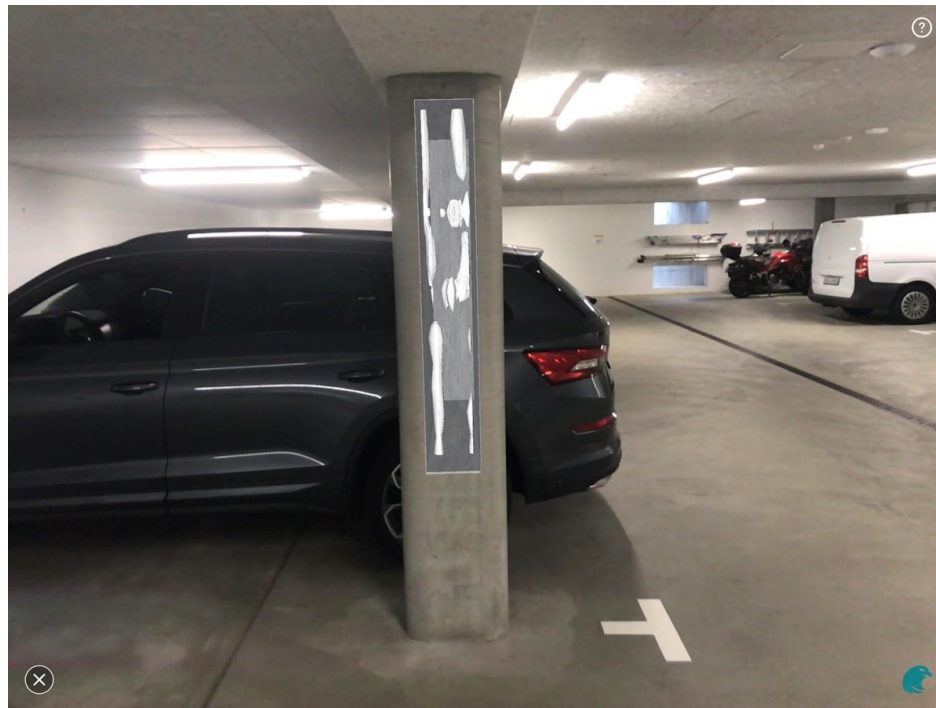
## Workflow – Augmented Reality



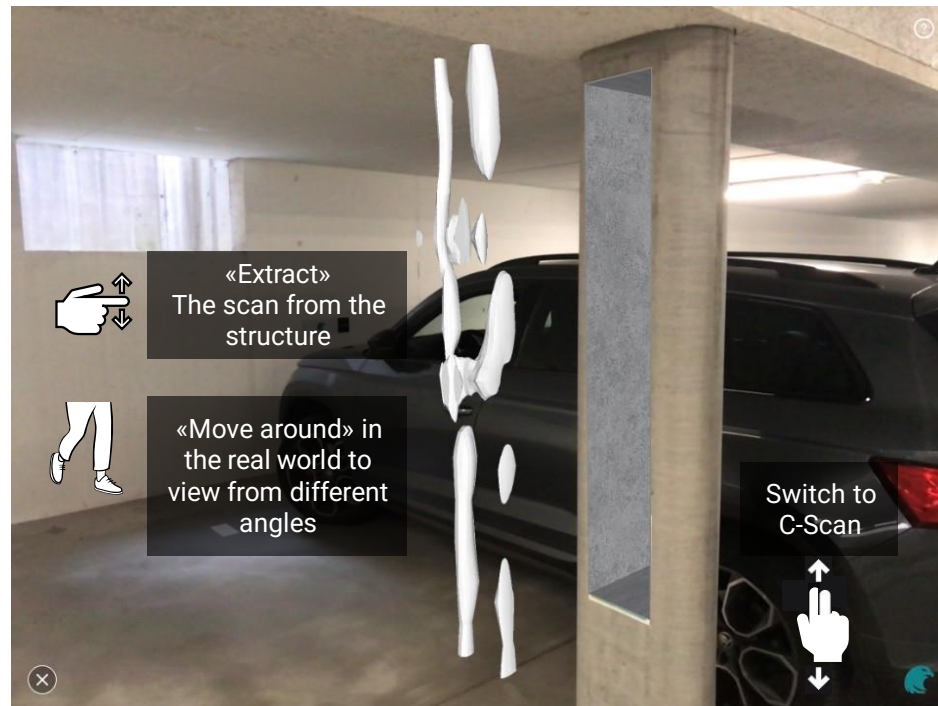
## Workflow – Augmented Reality



## Workflow – Augmented Reality



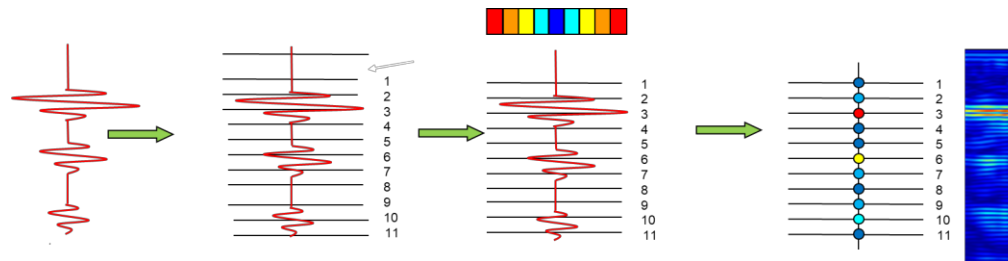
## Workflow – Augmented Reality



## Image Interpretation – Understanding Echoes – Colour Coding



The echoes are colour coded to make image interpretation simpler.  
Strong echoes occur when there is a boundary between two materials with differing acoustic impedances.  
The strongest echoes are from a concrete / air boundary.



Strongest echoes  
are yellow, orange  
and red.

## Image Interpretation – Reflections at Boundaries

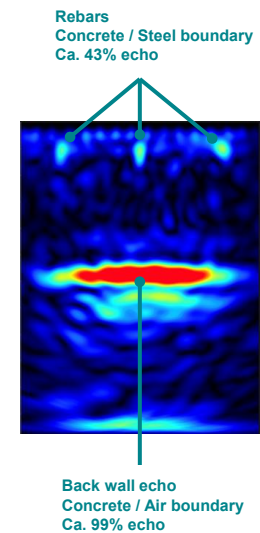


The main boundaries encountered in reinforced concrete are concrete / air and concrete / steel.  
The strongest echoes are from the concrete / air boundary which occur at the back wall and at defects such as voids, honeycombs and delaminations.

Interface	Z <sub>1</sub>	Z <sub>2</sub>	R
Concrete - Metal	9.6	46.5	43%
Concrete - Air	9.6	.000429	99%

$$R = \frac{(Z_2 - Z_1)^2}{(Z_2 + Z_1)^2}$$

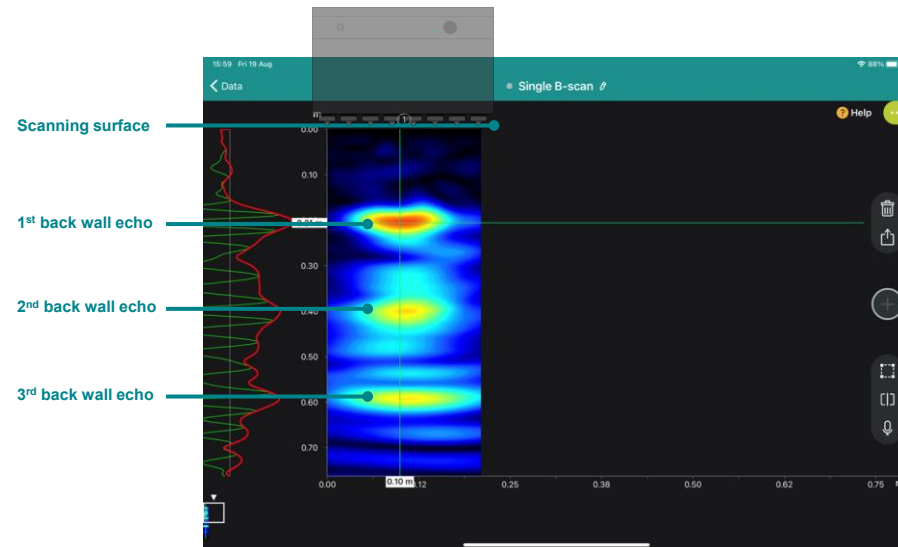
R = energy reflected  
Z1 = acoustic impedance concrete  
Z2 = acoustic impedance 2nd material



## Image Interpretation – Multiple Echoes



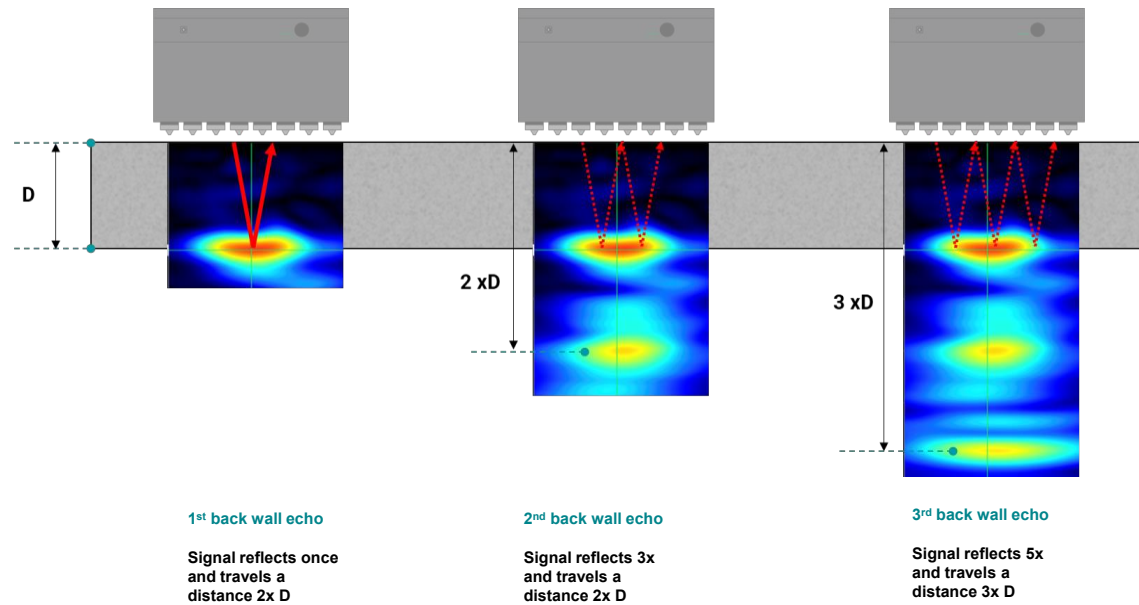
The ultrasonic wave bounces backwards and forwards within an element. So particularly for thinner elements, it is quite common to see multiple echoes of the back wall and other large objects such as large voids and delaminations.



## Image Interpretation – Multiple Echoes - Explanation



The image below shows the path travelled by the signal to create the 1<sup>st</sup>, 2<sup>nd</sup> and 3<sup>rd</sup> back wall echoes.

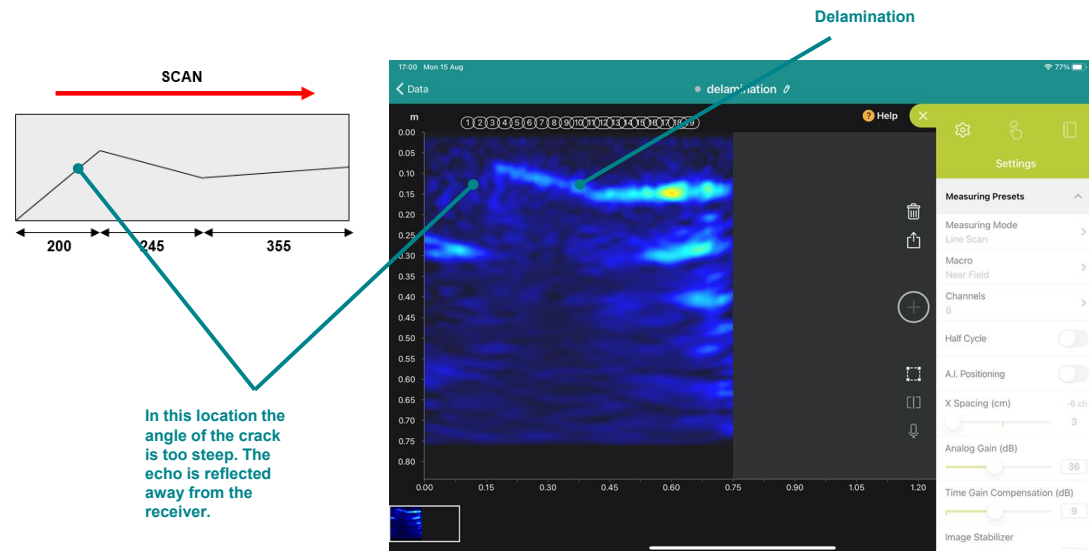




## Image Interpretation – Crack Detection



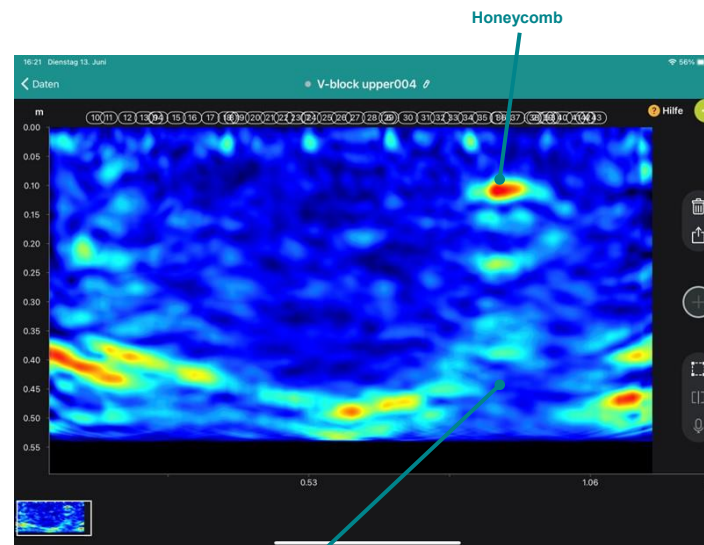
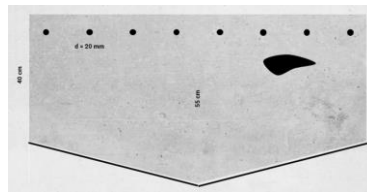
Cracks or delaminations that run more or less parallel to the scanning surface can be detected.  
Cracks that are vertical or at a steep angle cannot be detected.



## Image Interpretation – Shadowing



Larger objects create shadows on the back wall. Likewise, a shadow on the back wall most likely indicates the presence of an object, even if it cannot be seen directly.

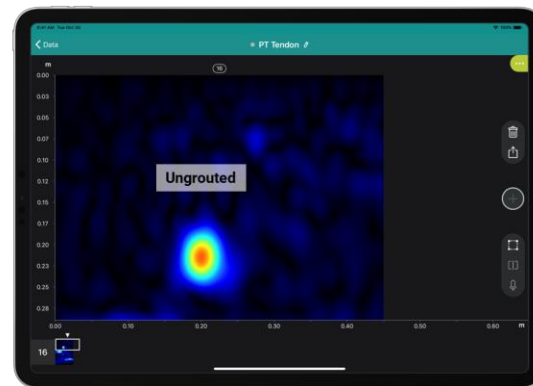
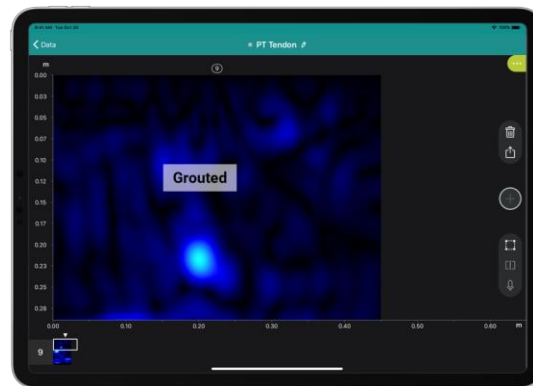


Shadow on the  
back wall

## Image Interpretation – Grouting Defects



Voids inside tendon ducts due to grouting defects, cause stronger echoes than those from fully grouted ducts. This principle has been successfully used to locate grouting defects. (Note! It is always advisable to confirm by drilling and performing a visual inspection.





For more information on the product use of the product, please refer  
to the PD8050 documentation

It is available for download on



<https://www.screeningeagle.com/en/products/pundit-pd8050>

For safety and liability information, please download at <https://www.screeningeagle.com/en/about-us/gtc-and-certificates>  
Subject to change. Copyright © 2022 by Proceq SA, Schwerzenbach. All rights reserved.

#### SIA-PACIFIC

Proceq Asia Pte Ltd.  
1 Fusionopolis Way  
Connexis South Tower #20-02  
Singapore 138632  
T +65 6382 3966

#### CHINA

Proceq Trading Shanghai Co., Limited  
Room 701, 7th Floor, Golden Block  
407-1 Yishan Road, Xuhui District  
200032 Shanghai | China  
T +86 21 6317 7479

#### EUROPE

Proceq AG  
Ringstrasse 2  
8603 Schwerzenbach  
Zurich | Switzerland  
T +41 43 355 38 00

#### UK

Screening Eagle UK Limited  
Bedford i-lab, Stannard Way  
Priory Business Park  
MK44 3RZ Bedford  
London | United Kingdom  
T +44 12 3483 4645

#### MIDDLE EAST AND AFRICA

Proceq Middle East and Africa  
Sharjah Airport International  
Free Zone | P.O.Box: 8365  
United Arab Emirates  
T +971 6 5578505

#### USA, CANADA & CENTRAL AMERICA

Screening Eagle USA Inc.  
14205 N Mopac Expressway Suite 533  
Austin, TX 78728 | United States

Screening Eagle USA Inc.  
117 Corporation Drive  
Aliquippa, PA 15001 | United States  
T +1 724 512 0330

#### SOUTH AMERICA

Proceq SAO Equipamentos  
de Medição Ltda.  
Rua Paes Leme 136  
Pinheiros, Sao Paulo  
SP 05424-010 | Brasil  
T +55 11 3083 3889



[www.ScreeningEagle.com](http://www.ScreeningEagle.com)