



ARCHITEXTURAL™

Surface. Designed.

ARCHITEXTURAL™

Introducing Architextural, suppliers of all architectural and building related films. Transforming décor both inside and out.

See

Replica finishes that are hard to distinguish from the real material.

Touch

Textures that enhance, uplift and transform interiors.

Feel

Create amazing spaces and high quality customer experiences at a fraction of the cost.

Architextural is part of William Smith group 1832, the leading trade supplier of vinyl films and trade sign manufacturing. Servicing the sign, graphics and interiors industries for over 100 years.

Surface. Designed.





3M DI-NOC EXTERIOR RANGE

EXTERIOR ARCHITECTURAL FINISHES

3M DI-NOC Exterior Architectural Finishes are durable, dimensionally stable, and weather resistant surface finishes designed to transform the exterior of buildings.

3M DI-NOC Exterior range can add life to tired building fronts, offering a great, cost effective alternative to traditional solutions. The self-adhesive finishes allow building's exterior to maintain a consistent finish and colour, despite UV exposure and other conditions. The product offers great value to both commercial and residential refurbishments, due to its minimum downtime as a result of the ease of application and no drying time, unlike paint, with the product offering a life expectancy of up to 10 years.



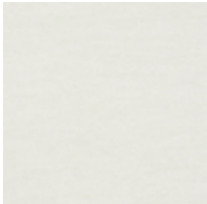
THE RANGE

3M DI-NOC Exterior is available in 24 standard colours, with these surface finishes ranging from the warmth of wood grain, sleek feel of metal, cool essence of natural stone and pure colours. As well as this range offering a wide variety of choice to the customer, the material is also in stock, and available to be ordered by the metre, for next day delivery.

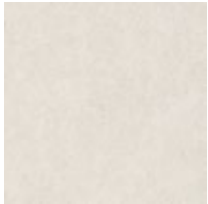
Key Benefits

- Fast, clean and easy redecoration
- 10 year durability
- Reduced downtime due to ease of installation
- Cost effective alternative

CERAMIC



AE-1632EX



AE-1634EX



AE-1635EX

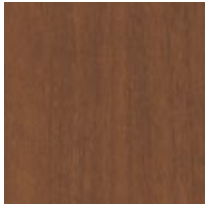
FINE WOOD



FW-1122EX



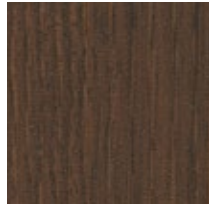
FW-1214EX



FW-233EX



FW-618EX

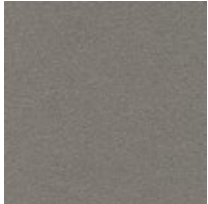


FW-625EX

METALLIC



FW-887EX



PA-038EX



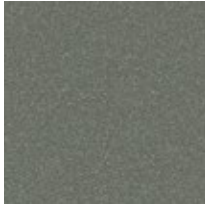
PA-039EX



PA-181EX



PA-1854EX



PA-187EX

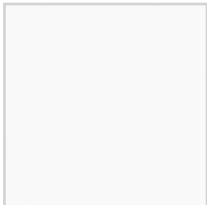


PA-389EX



PS-090EX

SINGLE COLOUR



PS-957EX

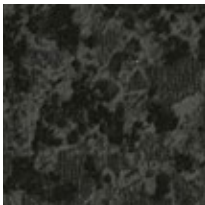


PS-959EX



PS-976EX

STONE

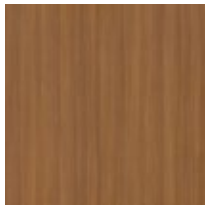


ST-442EX

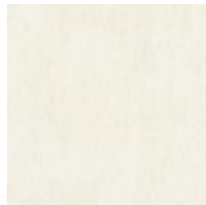


ST-736EX

WOOD GRAIN



WG-1140EX



WG-657EX



WG-960EX



BEFORE

“
LAST UP
TO 10 YEARS.
”



AFTER



ARCHITEXTURAL™

Surface. Designed.

01833 690305
info@architextural.co.uk
www.architextural.co.uk

 @_Architextural
 @WilliamSmith1832

William Smith Group 1832 Grove Works Queen Street Barnard Castle DL12 8JQ

PART OF **WILLIAM SMITH GROUP 1832**

