



**THE OHIO STATE UNIVERSITY**

---

Nanotech West Lab

**MAEBL**

MEETING FOR ADVANCED E-BEAM LITHOGRAPHY

April 3, 2019

Ohio Union Cartoon Room

The Ohio State University

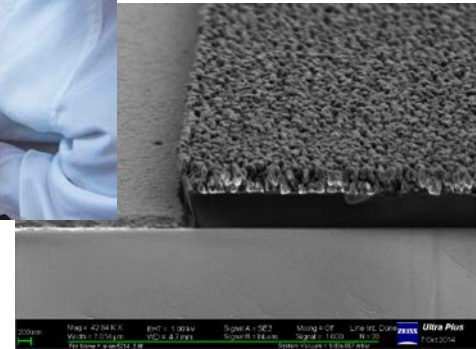
Columbus, Ohio



# Institute for Materials Research: (IMR) is the gateway to materials-allied research at The Ohio State University.

## Mission

- To nurture, grow and support excellence in materials research at Ohio State;
- assist the advancement of research team development;
- provide strategic planning, resources, infrastructure, and educational/outreach activities





## NTW is a “User” Facility Serving the OSU Materials Community and External Customers by providing:

- **>24,000 square feet (~13,000 lab space)**
  - Class 100 cleanroom for fabrication
  - Energy Storage and Biohybrid Lab
  - IR Characterization and Analysis Facility
  - MOCVD Epitaxy (IR to ultra-wide bandgap) Lab
  - Materials Innovation Lab (MIL)
- **9 professional engineering staff**





## What is MAEBL?

MAEBL is community of engineers, scientists & students from industry, academia, and government that use EBL to enable cutting edge research and development.

The goal of the meeting is to connect active novice to experienced EBL tool owners and users to **openly exchange practical and directly applicable EBL knowledge** in an open forum format.



Thank you!  
Angie Dockery  
Ciara Donovan  
Dr. John Carlin  
Dr. Steven A. Ringel



# THE OHIO STATE UNIVERSITY

INSTITUTE FOR MATERIALS RESEARCH



ALLRESIST



DisChem

CHEMISTRY FOR  
ADVANCED LITHOGRAPHY