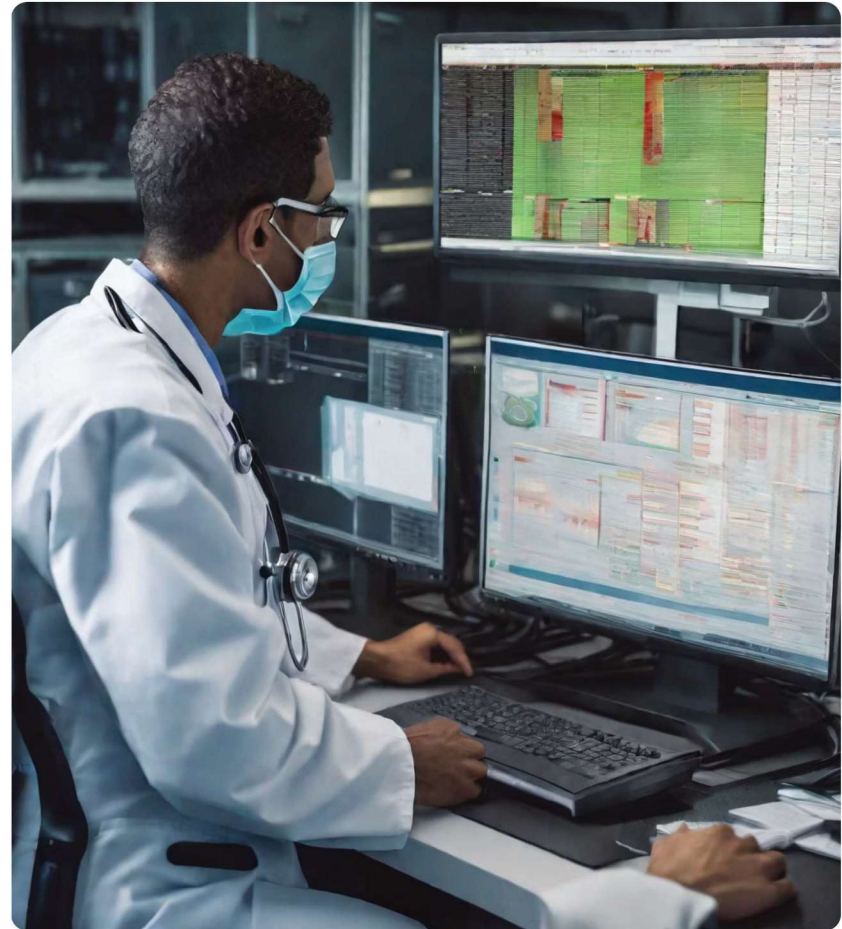




X-Med Software: Virtual Catalogue of Services



Cofinanciado por:



Introduction to X-Med Software

X-Med Software is a cutting-edge healthcare software that seamlessly integrates with other healthcare software to gather and organize information for big data analysis and usage in clinical trials and studies. Our software is designed to provide healthcare professionals with a comprehensive view of patient data, enabling them to make more informed decisions and improve patient outcomes.



Seamless Integration with Healthcare Softwares

Integration with Electronic Health Records (EHRs)

Our software integrates seamlessly with popular EHRs like Epic and Cerner to gather and organize patient data.

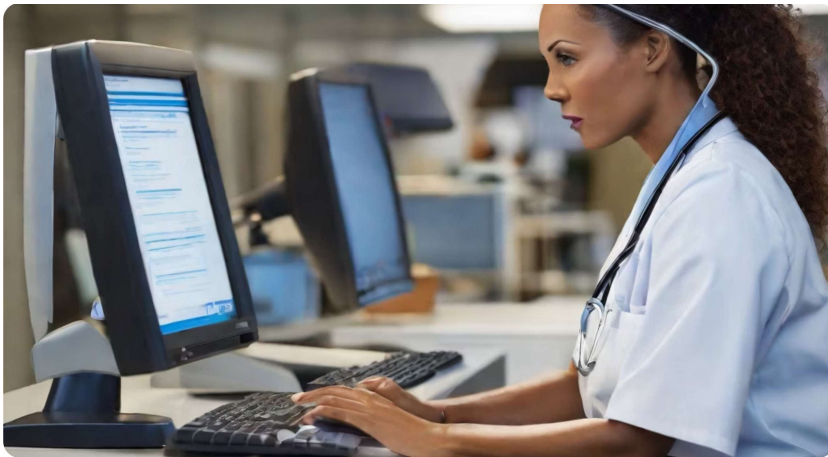
Integration with Clinical Trial Management Systems (CTMS)

X-Med Software can be easily integrated with CTMS like Medidata and Oracle to streamline the clinical trial process.

Integration with Laboratory Information Management Systems (LIMS)

Our software can also be integrated with LIMS like LabWare and Thermo Fisher to manage and analyze laboratory data.

Data Gathering and Organization



Seamless Integration

X-Med Software seamlessly integrates with other healthcare softwares, allowing for easy data transfer and organization. This ensures that all relevant data is gathered and organized in one place, making it easier for healthcare professionals to access and analyze.

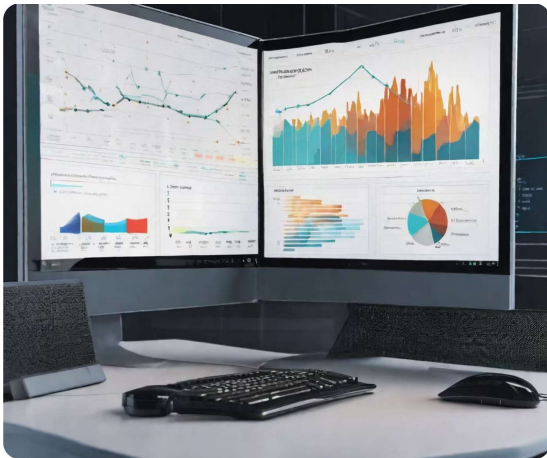
Automated Data Collection

X-Med Software automates the process of data collection, reducing the risk of human error and ensuring that all relevant data is captured. This allows healthcare professionals to focus on analyzing the data, rather than spending time manually collecting it.

Intuitive Data Organization

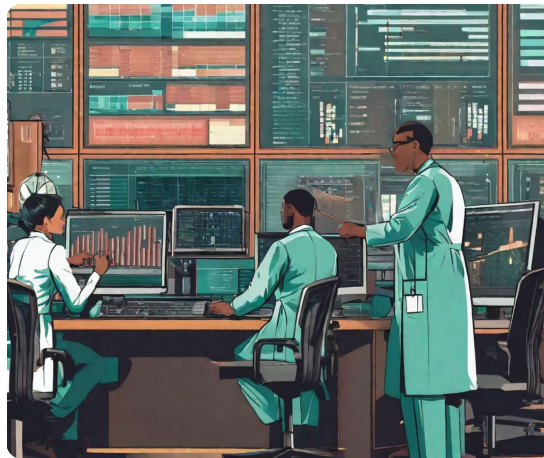
X-Med Software organizes the collected data in an intuitive manner, making it easy for healthcare professionals to access and analyze. The software allows for customizable data visualization, allowing users to easily identify trends and patterns in the data.

Big Data Analysis



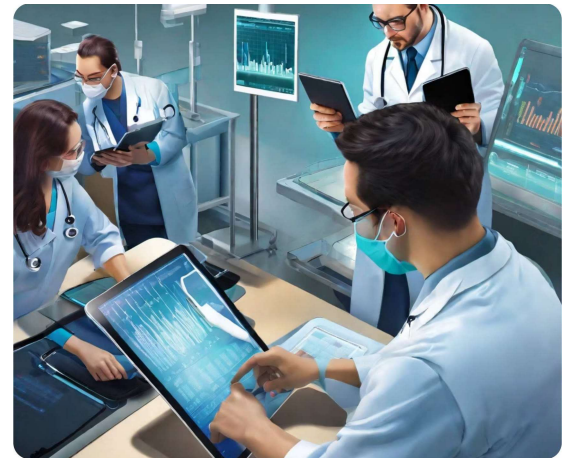
Data Visualization

X-Med Software provides easy-to-read visualizations of complex healthcare data, allowing for quick and informed decision making.



Customizable Dashboards

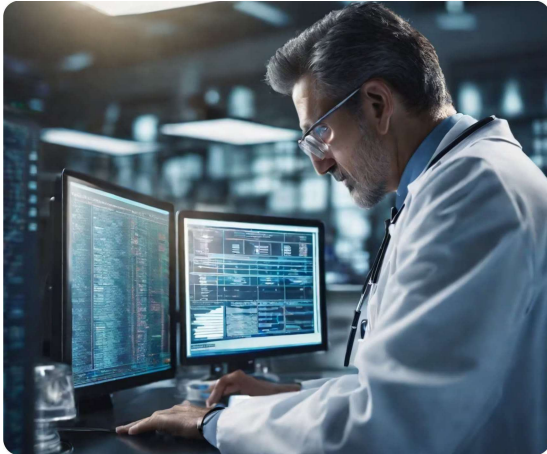
Our software allows for customizable dashboards that can be tailored to specific healthcare needs and preferences.



Real-Time Data Analysis

X-Med Software enables real-time data analysis, making it easy to stay up-to-date on the latest healthcare trends and developments.

Clinical Trial and Study Usage



Streamlined Data Collection

X-Med Software seamlessly integrates with other healthcare softwares to gather and organize data for clinical trials and studies.



Efficient Data Analysis

X-Med Software's big data analysis capabilities allow for efficient and accurate analysis of clinical trial and study data.



Improved Clinical Trials and Studies

With X-Med Software's seamless integration and efficient data analysis, clinical trials and studies can be conducted with improved accuracy and speed.

Introduction to X-MED Software

X-MED Software is a cutting-edge healthcare data management tool that has revolutionized the way healthcare providers manage patient data. With its intuitive interface and automated data collection features, X-MED Software has become an essential tool for modern healthcare organizations.

Development History

X-MED Software was developed by a team of experienced healthcare professionals who recognized the need for a more efficient and effective way to manage patient data. The software was first introduced in 2005 and has since undergone several updates and improvements to meet the evolving needs of healthcare providers.

Role in Modern Healthcare Data Management

X-MED Software plays a critical role in modern healthcare data management by providing automated data collection and intuitive data organization features. These features enable healthcare providers to quickly and easily access patient data, which can be used to improve patient outcomes and streamline operations.

X-MED Integration with Healthcare Systems

X-MED is designed to seamlessly integrate with existing healthcare systems, ensuring compatibility and ease of integration. Our platform can be easily integrated with a variety of healthcare systems and platforms, including:

Electronic Health Records (EHRs)

X-MED can integrate with popular EHRs such as Epic, Cerner, and Athenahealth, allowing for seamless data transfer and access to patient information.

Practice Management Systems (PMS)

X-MED can integrate with popular PMS such as Kareo, Meditech, and Allscripts, allowing for seamless scheduling and billing management.

Patient Portals

X-MED can integrate with popular patient portals such as MyChart and PatientPortal, allowing for seamless patient communication and access to medical records.

Telemedicine Platforms

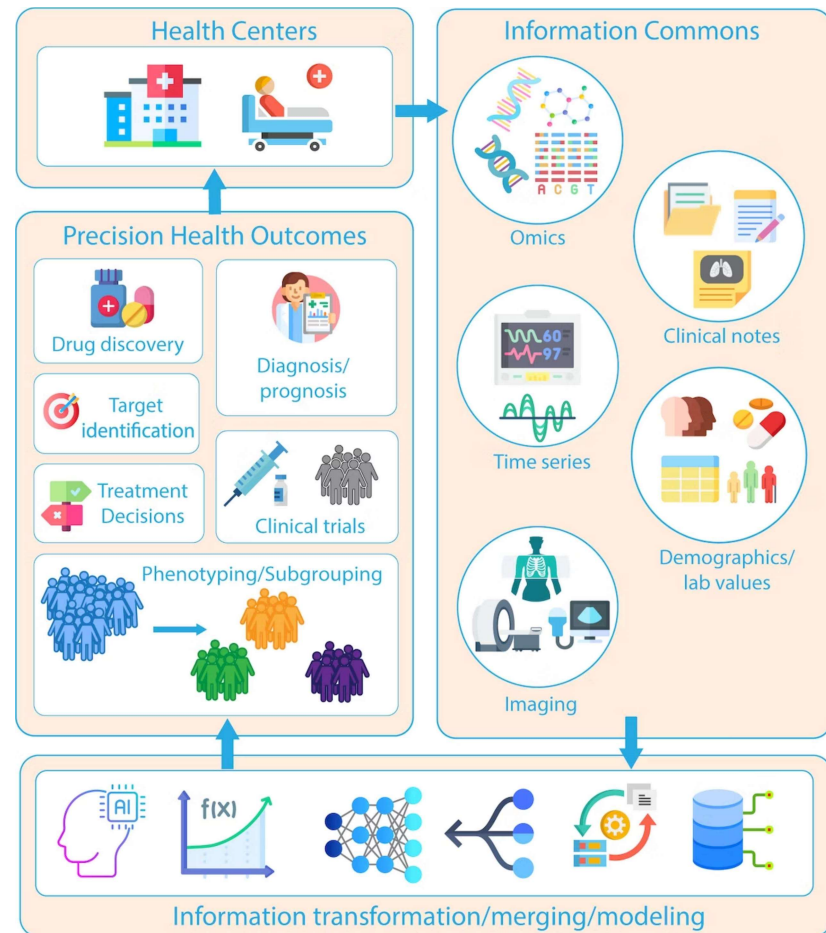
X-MED can integrate with popular telemedicine platforms such as Teladoc and Amwell, allowing for seamless remote patient care and consultations.

X-MED Health Data Transformation

X-MED is a cutting-edge technology that transforms scarce and heterogeneous health data into integrated, analysis-ready formats. This technology leverages advanced algorithms and machine learning techniques to extract valuable insights from raw health data, making it easier for healthcare professionals to make informed decisions.

The benefits of X-MED's health data transformation include:

- Improved data quality and accuracy
- Increased efficiency and productivity in healthcare operations
- Enhanced patient outcomes and care



Automated Data Processing in X-MED

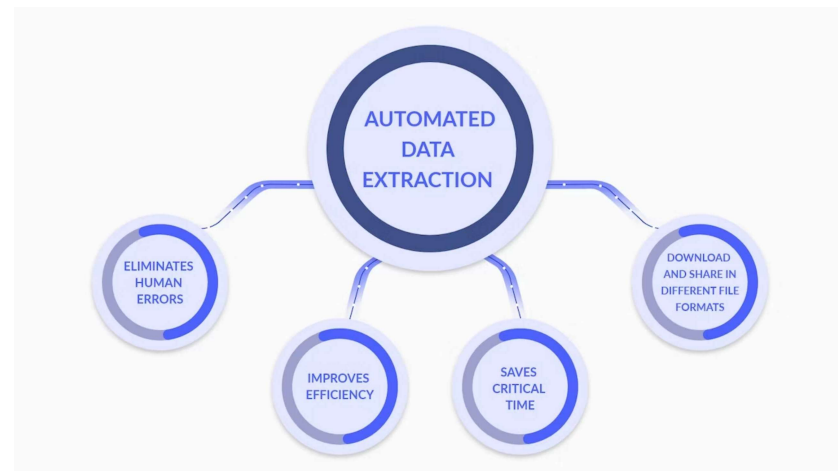
Technical Details

X-MED's automated data processing uses advanced algorithms and machine learning techniques to streamline the data processing process. The system is designed to handle large volumes of data quickly and accurately, with minimal human intervention.

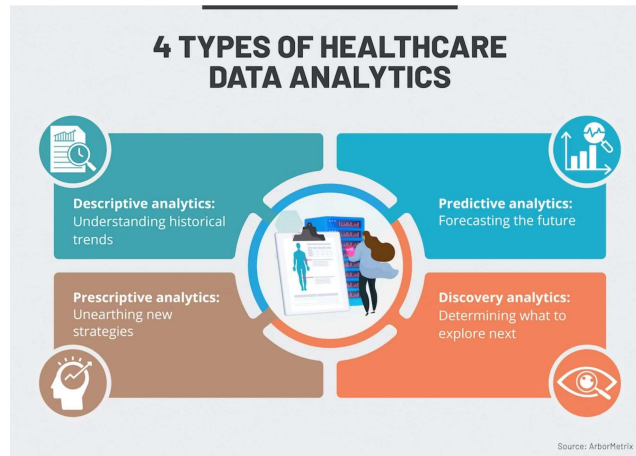
- The system can automatically extract relevant data from various sources, such as electronic health records and medical billing systems.
- The system can perform data cleaning and validation to ensure accuracy and completeness of the data.
- The system can generate reports and insights based on the processed data, providing valuable information for clinical decision-making.

Benefits

- **Time savings:** The automated data processing system can process large volumes of data quickly, reducing the time and effort required for manual data entry and processing.
- **Enhanced data quality:** The system can perform data cleaning and validation to ensure accuracy and completeness of the data, reducing errors and inconsistencies in the data.



X-MED Health Data Transformation



Improved Data Quality

X-MED's health data transformation allows for the integration of data from different patient management record systems, resulting in improved data quality and accuracy.

Increased Efficiency

By streamlining data from multiple sources, X-MED's health data transformation increases efficiency and reduces the time and resources required for data management.

Data Privacy at X-MED

At X-MED, we take data privacy very seriously. We have implemented several measures to ensure that patient data is protected while still maintaining its utility.



Anonymization and De-Identification

Anonymization and de-identification are two processes that can be used to protect patient data while still maintaining its utility. Anonymization involves removing personal identifying information from a dataset, such as names and addresses, while still maintaining the data's utility. De-identification involves removing all personal identifying information from a dataset, such as social security numbers and birth dates, to make it completely anonymous.

At X-MED, we use both anonymization and de-identification processes to protect patient data. For example, we may remove names and addresses from a dataset before sharing it with third-party vendors, while still maintaining the data's utility for analysis and research purposes. We also use de-identification to make patient data completely anonymous, such as when sharing data with regulatory agencies.

Compliance with Standards

X-MED complies with various interoperable de-identification, privacy, and curation standards, such as FHIR and OMOP. These standards ensure that healthcare data is secure, accurate, and easily accessible to authorized users.

Adherence to FAIR Data Principles

FAIR (Findable, Accessible, Interoperable, and Reusable) data principles are essential for effective healthcare data management. By adhering to these principles, X-MED ensures that its data is easily accessible, reusable, and interoperable with other systems and applications.

FAIR data principles also promote transparency and accountability in healthcare data management. By making data more accessible and transparent, healthcare organizations can improve patient outcomes and reduce costs by identifying areas for improvement and optimizing resource allocation.

Enhancing Clinical Trials with X-MED

X-MED is a cutting-edge data management platform designed to enhance the efficiency and effectiveness of clinical trials and studies. By leveraging advanced technologies and analytics, X-MED streamlines the data collection and analysis process, resulting in improved outcomes and faster time-to-market for new treatments and therapies.

Improved Outcomes in Clinical Trials

X-MED's data management capabilities have been shown to improve outcomes in clinical trials in several ways. For example, X-MED's real-time data collection and analysis allows for more accurate and timely monitoring of patient outcomes, enabling researchers to identify potential issues and make adjustments to the trial design as needed. Additionally, X-MED's advanced analytics tools enable researchers to identify patterns and trends in the data that may not be immediately apparent, leading to more informed decision-making and better trial outcomes.

X-MED Case Studies



Streamlined Data Collection and Analysis

"X-MED has been a game-changer for our clinical trials. The software seamlessly integrates with our existing healthcare software, allowing us to streamline data collection and analysis."

Real-World Successes

"We were able to reduce data collection time by 50% with X-MED. The software's user-friendly interface and intuitive design made it easy for our researchers to use."

"X-MED's real-time data analysis allowed us to identify trends and make informed decisions faster. This resulted in a more efficient and effective clinical trial."

Technical Specifications and Requirements

System Requirements

X-MED requires a minimum of 1GB RAM and 10GB of free disk space for optimal operation. It is recommended to have at least 2GB RAM and 20GB of free disk space for larger healthcare setups.

X-MED is compatible with Windows 10 and macOS 10.13 or later. It is recommended to use the latest version of the operating system for optimal performance.

X-MED requires a minimum of 10Mbps internet connection for optimal operation. It is recommended to have a minimum of 50Mbps internet connection for larger healthcare setups.

Integration with EHRs, CTMS, and LIMS

X-MED can be integrated with popular EHRs like Epic and Cerner, CTMS like Medidata and Oracle, and LIMS like LabWare and Thermo Fisher.

The integration process involves configuring X-MED to communicate with the EHR, CTMS, or LIMS system. This can be done through APIs or other integration methods.

The integration process may require additional hardware or software components, depending on the specific requirements of the EHR, CTMS, or LIMS system.

X-MED Integration Capabilities

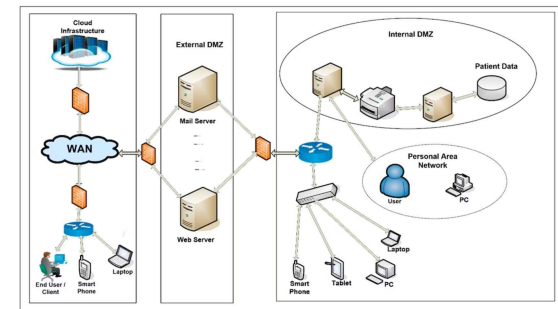
Compatibility with Other Healthcare Software Systems

X-MED is designed to be compatible with a wide range of healthcare software systems, including electronic health records (EHRs), practice management systems (PMS), and telemedicine platforms. Our team of experts has extensive experience in integrating X-MED with these systems, ensuring seamless communication and data sharing.

Successful Integrations

X-MED has successfully integrated with a variety of healthcare software systems, including:

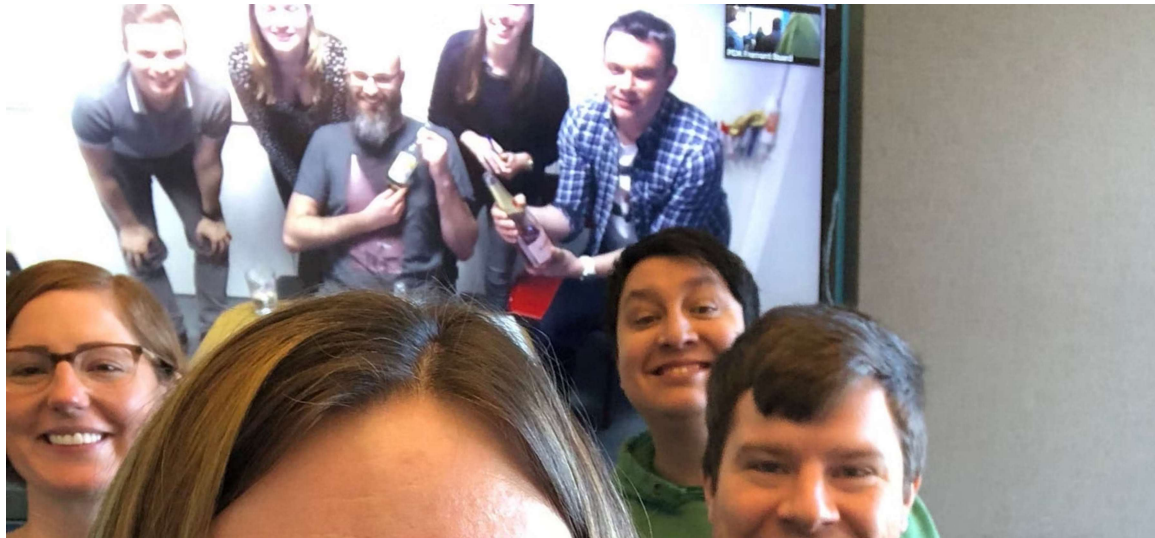
- Epic EHR
- Cerner EHR
- Allscripts EHR
- NextGen EHR
- Thom EHR
- Glintt EHR
-



Customer Support and Services

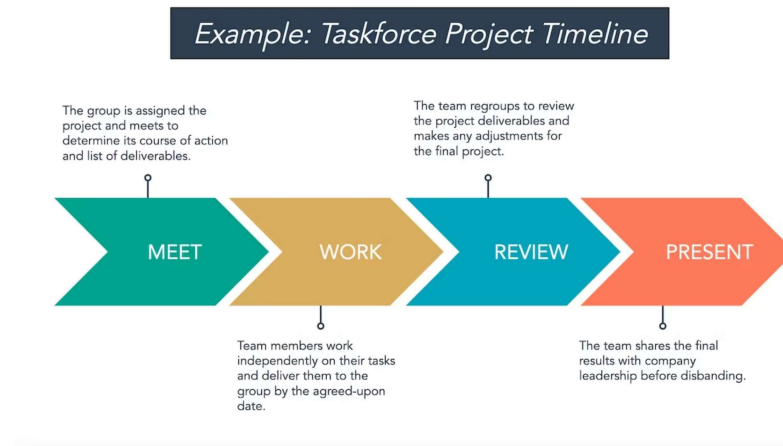
Effective Customer Support Case Studies

X-MED's comprehensive training sessions and customer support services have been instrumental in ensuring customer satisfaction and success.



X-MED Continuous Updates

X-MED is committed to providing our users with the latest software updates and feature enhancements to ensure the best possible experience. We regularly release new updates to our platform to improve functionality and address any issues that may arise.



Integration Capabilities

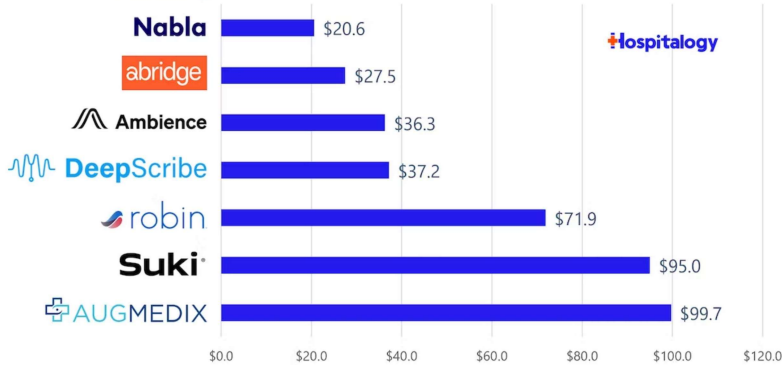
X-MED is designed to integrate with a variety of healthcare software systems, including EHRs, PMS, and telemedicine platforms. Our platform is built to be flexible and customizable, allowing for seamless integration with your existing systems.

Summary and Benefits of X-Med

X-Med is a powerful healthcare data management and analysis software that offers a range of benefits to healthcare providers and organizations. By leveraging advanced analytics and machine learning algorithms, X-Med transforms the way healthcare data is collected, analyzed, and used to improve patient outcomes and drive operational efficiency.

Recent Ambient Documentation Funding

(\$ in millions; total funding)



Key Advantages of X-Med

- Improved data accuracy and completeness through automated data collection and validation.
- Faster and more accurate analysis of healthcare data, enabling providers to make more informed decisions and improve patient outcomes.
- Increased operational efficiency through automated workflows and streamlined data management processes.

Contact Information



X-MED
HEALTH DATA

For sales and support inquiries, please contact us at:

- Email: info@xmed-healthcare.com
- Web: www.xmed-healthcare.com/

We would love to schedule a demo or consultation with you. Please contact us to schedule a time that works for you.



Cofinanciado por:

