





An active overthrust belt and associated foredeep in the Chott region of central Tunisia.

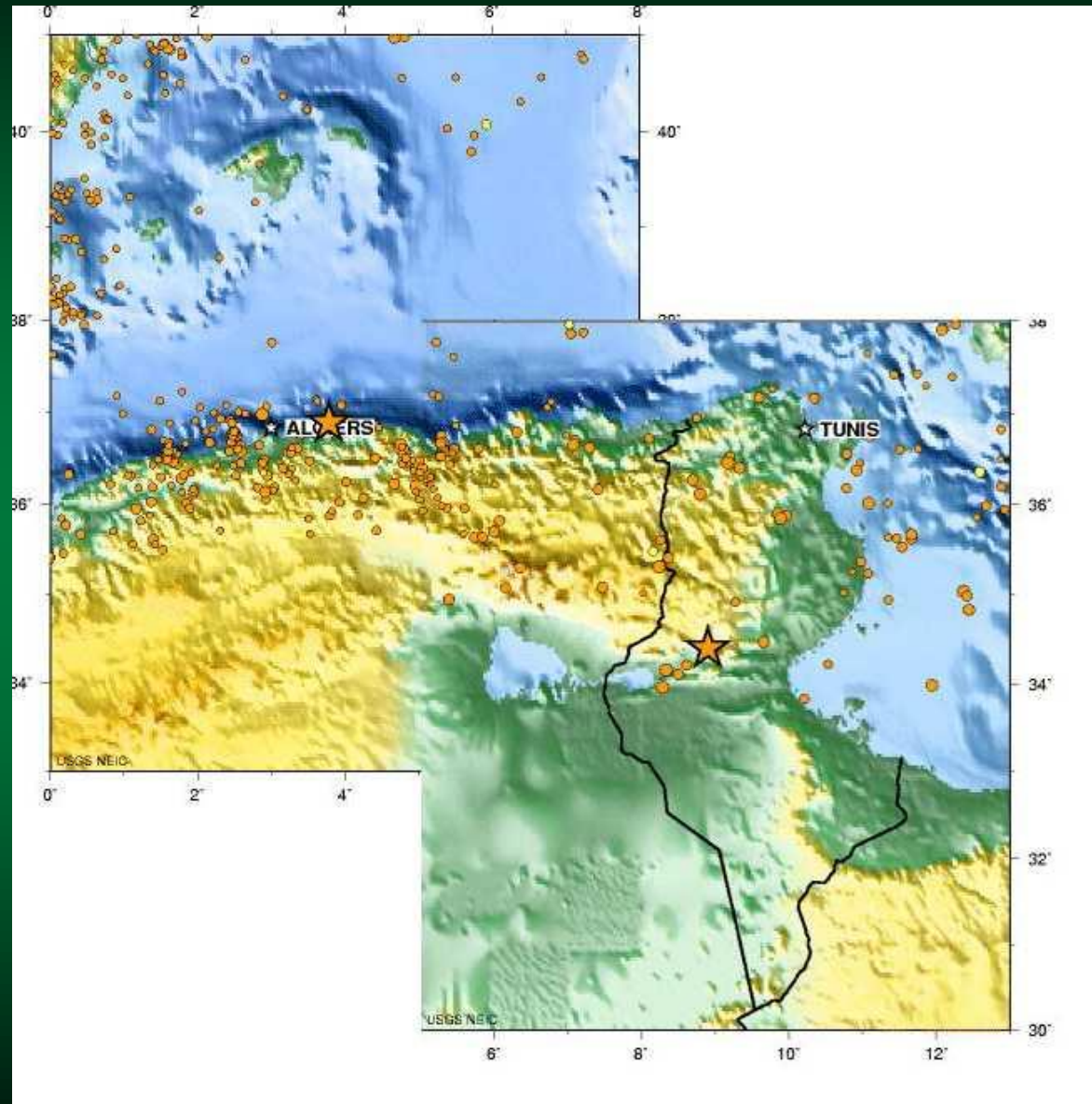
Dave Klepacki and James Batchelor, Eurogas Corporation, Calgary





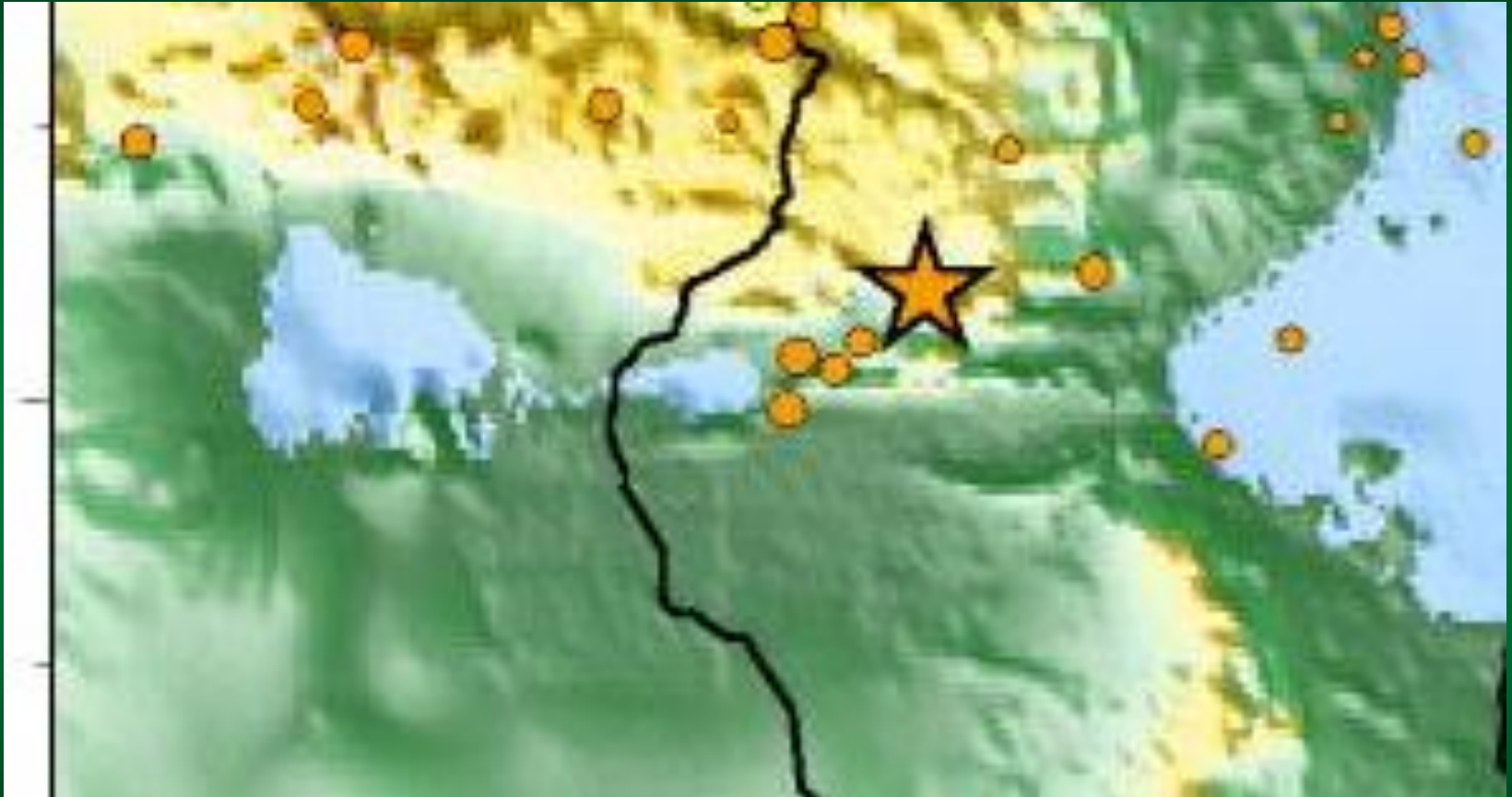
USGS Recent Seismicity

- Active faulting along southern Atlas Mtns.





March 4, 2003 Gafsa Event



10kms east of Gafsa, Magnitude 4.0, less than 33kms deep



Approaching the Mtn front from Kebili





Mountain Front east of Tozeur





Mountain front and incised fan East of Tozeur





Incised fold and fan





Incised Alluvial Fan



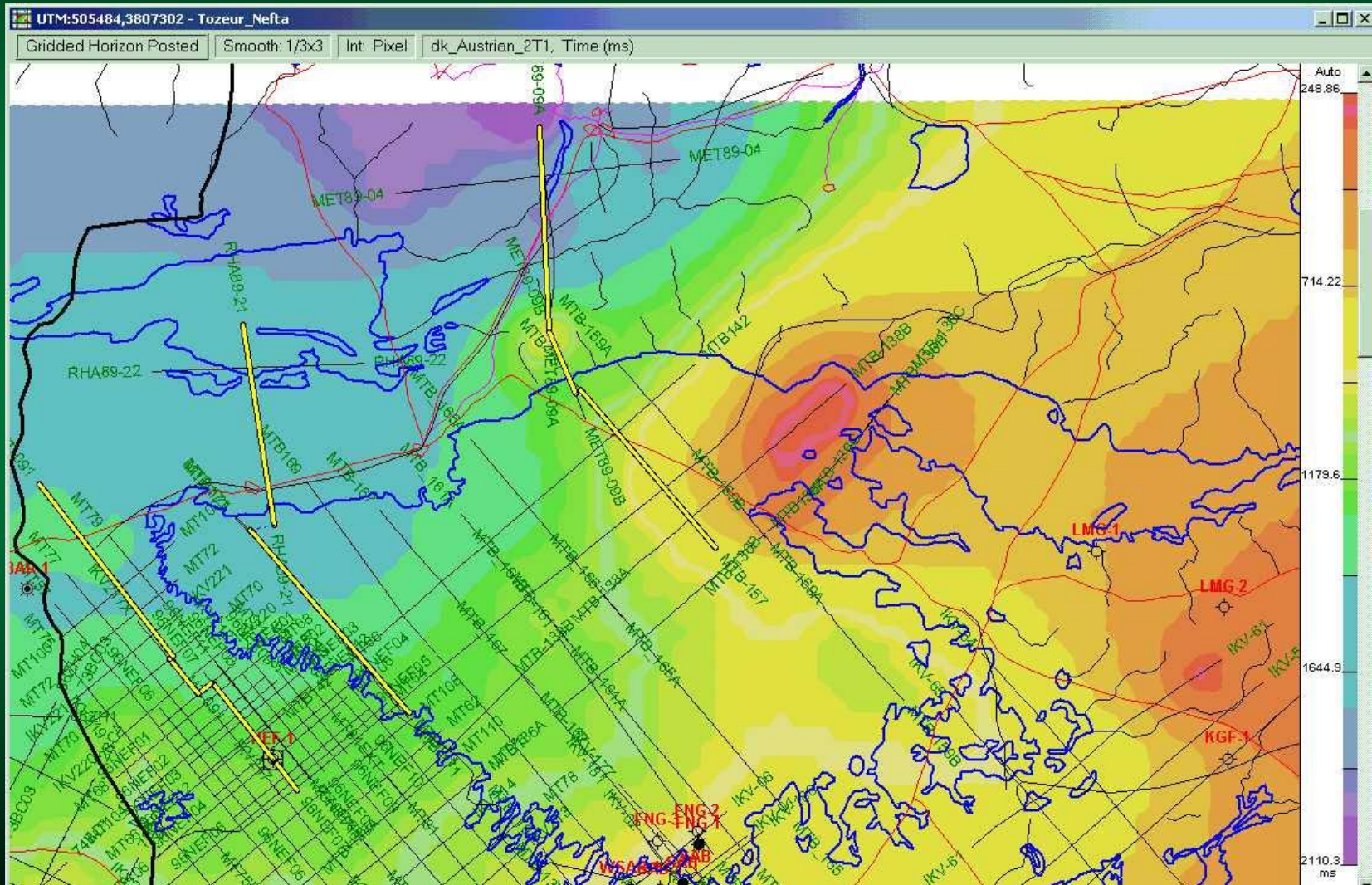


Incisement of Alluvial Fan



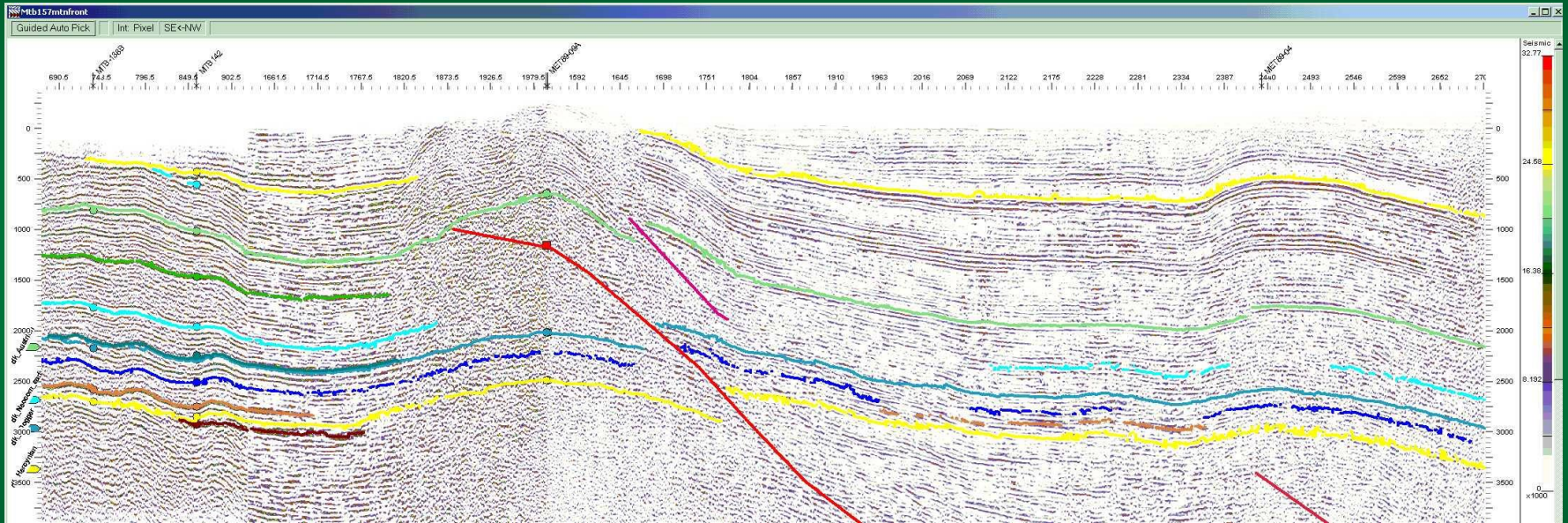


Location of Seismic Sections



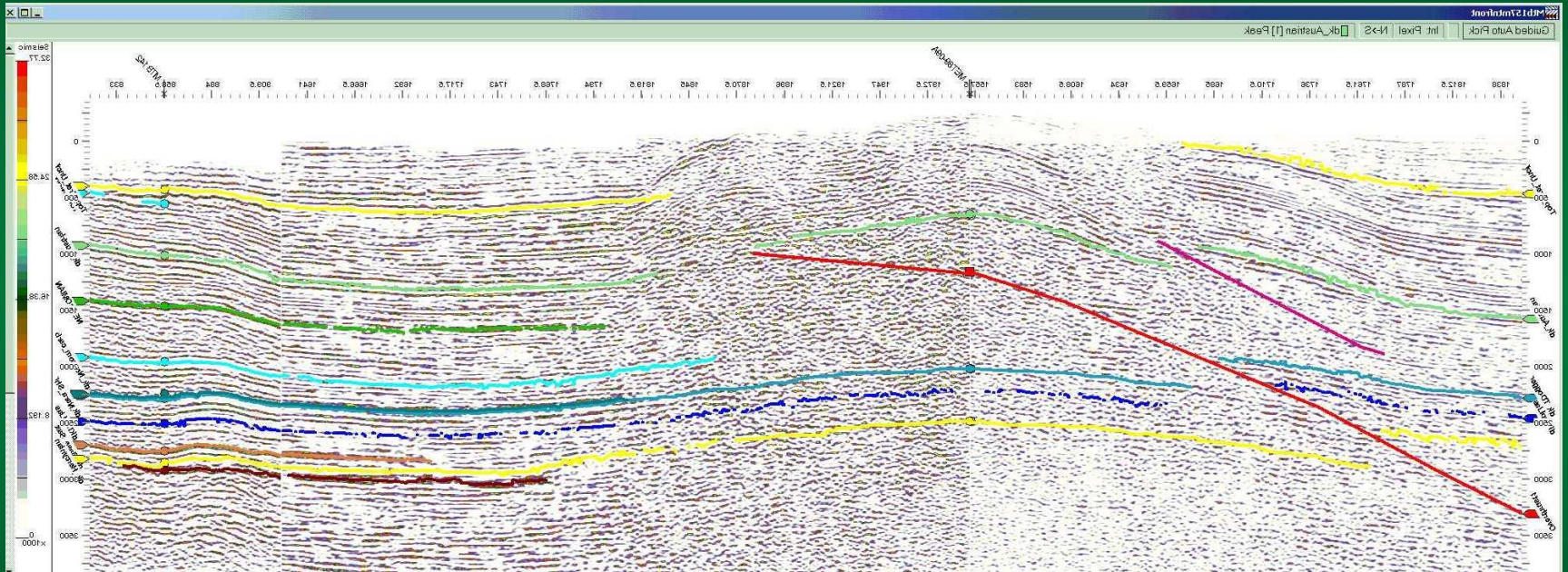


DeGauche Section



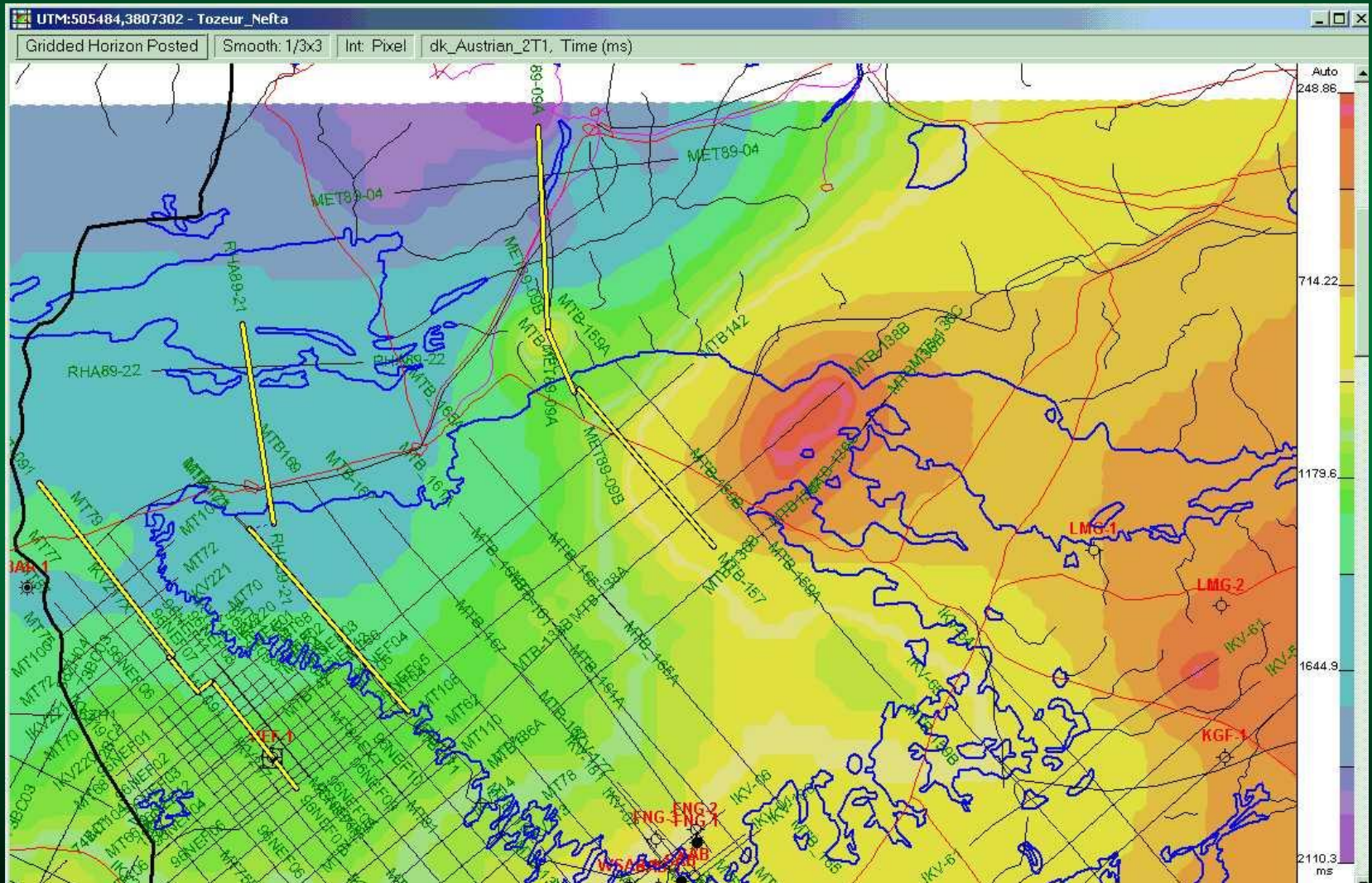


Degauche Section 1:1



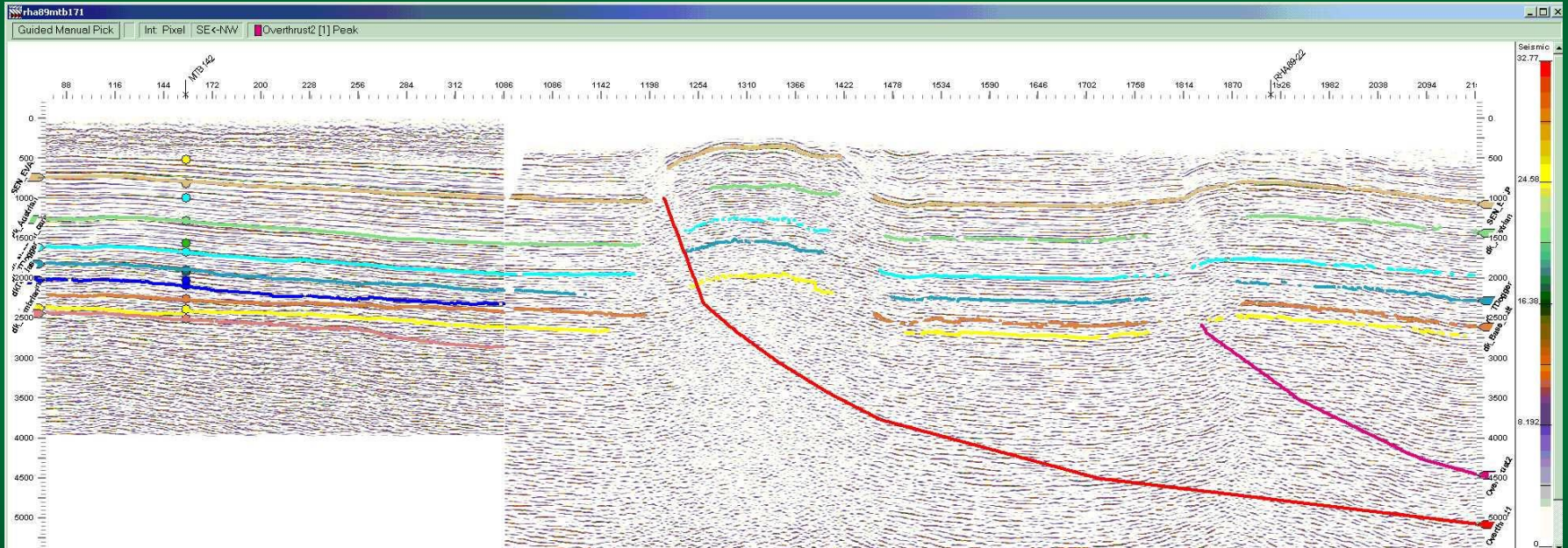


Location of Seismic Sections



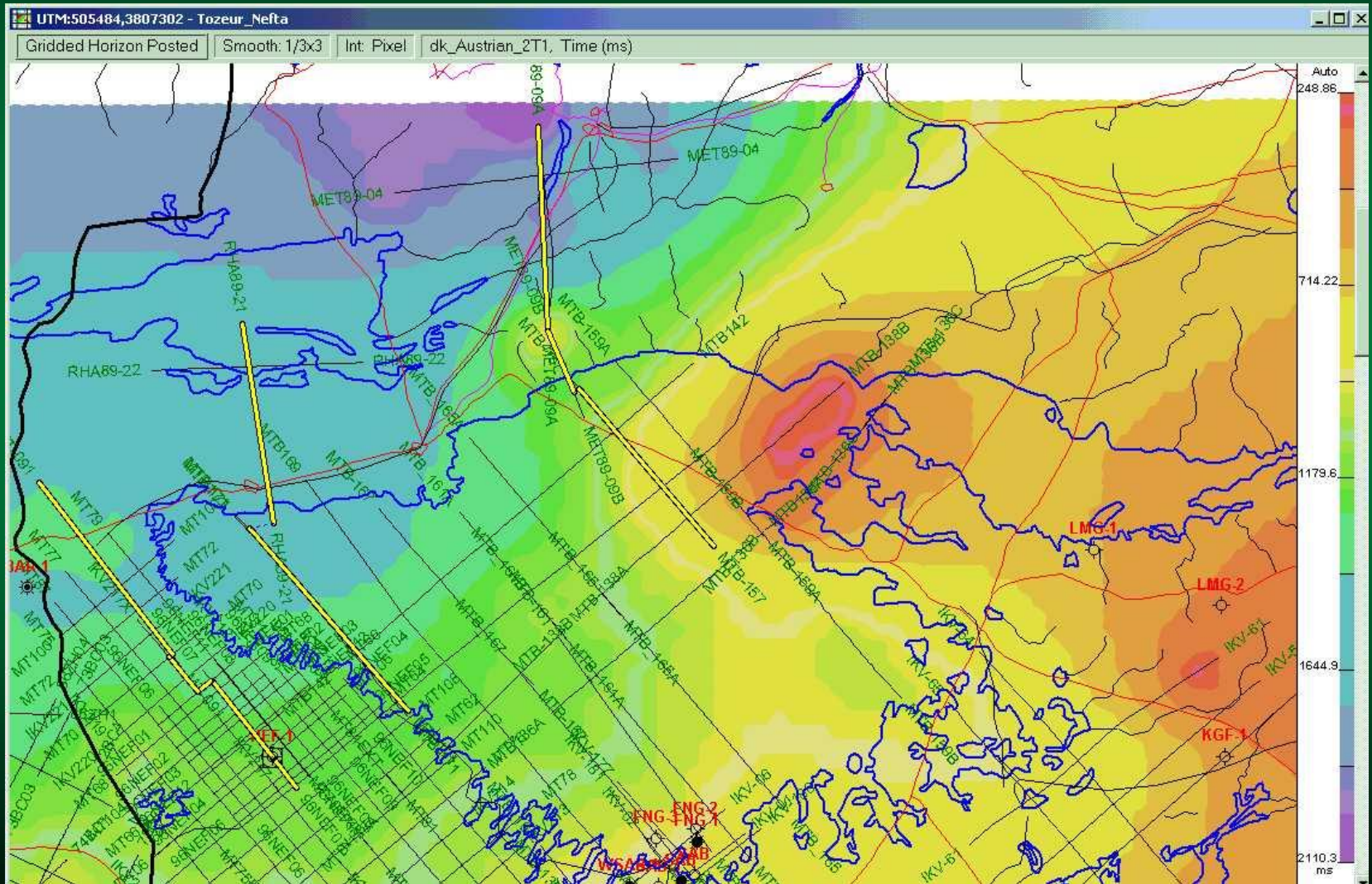


Nefta Seismic Section





Location of Seismic Sections



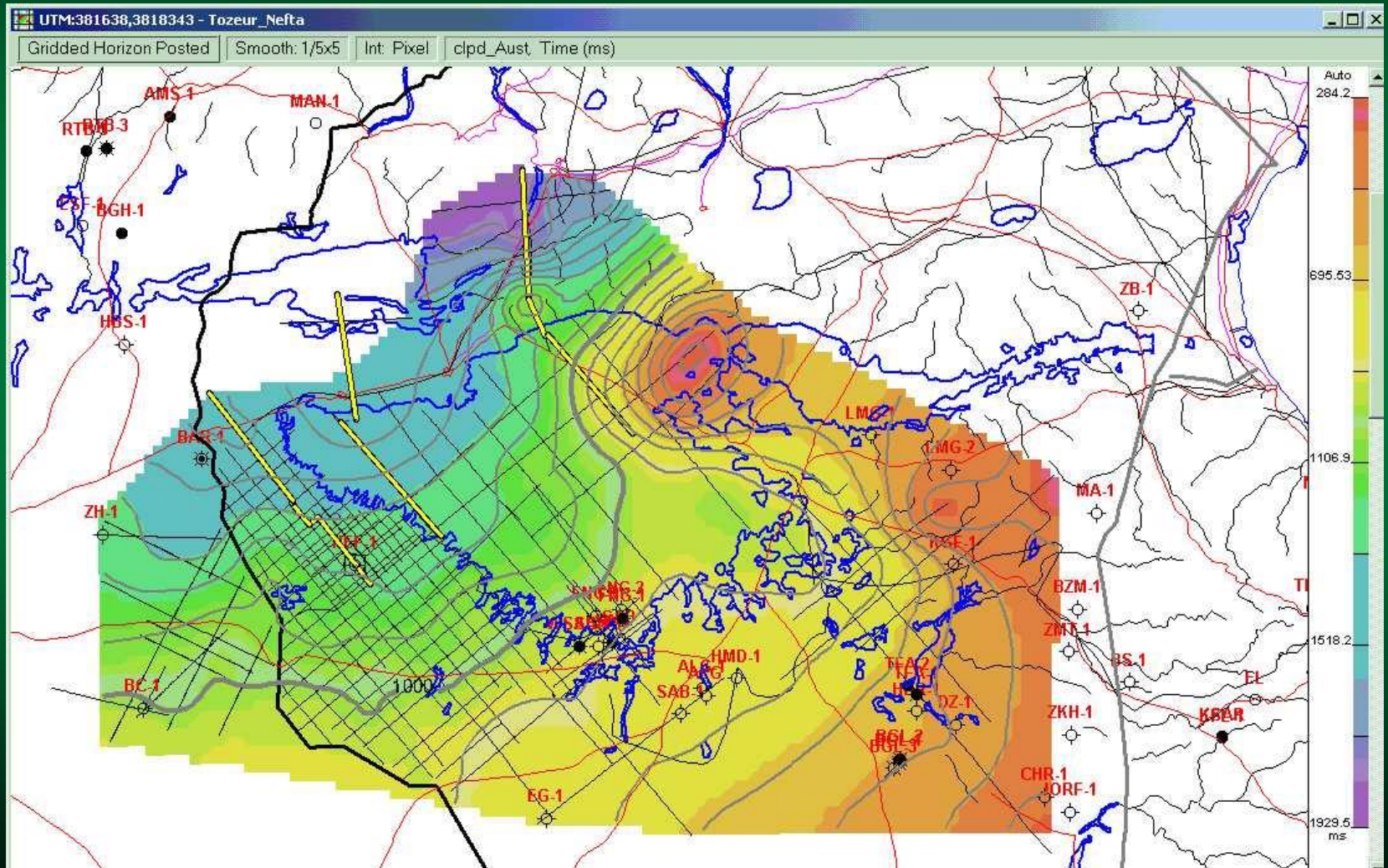


Mountain front near Chott El Gharsa



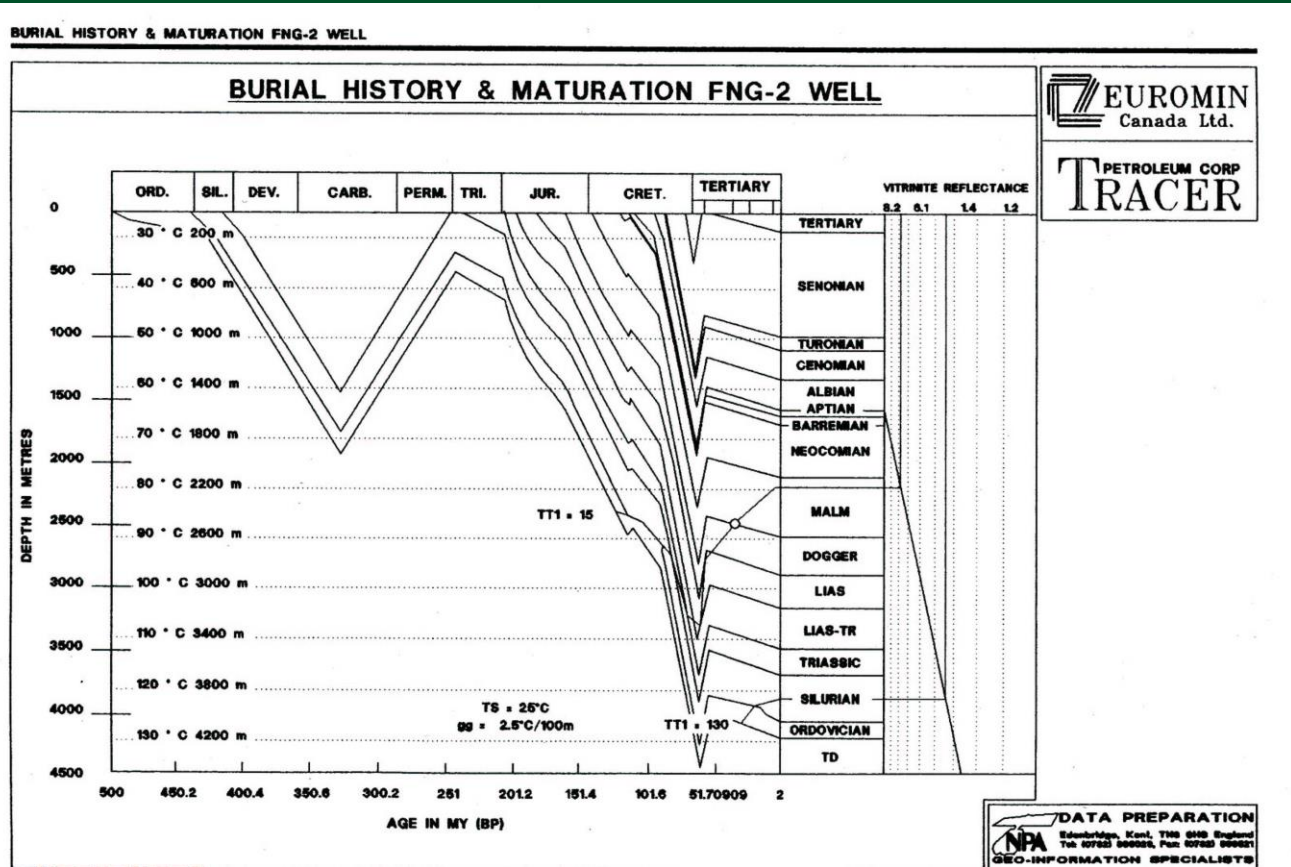


Austrian Unconformity Time Structure





Burial History of the Franig-2 Well





Franig-2 to Mountain Front foredeep fill

