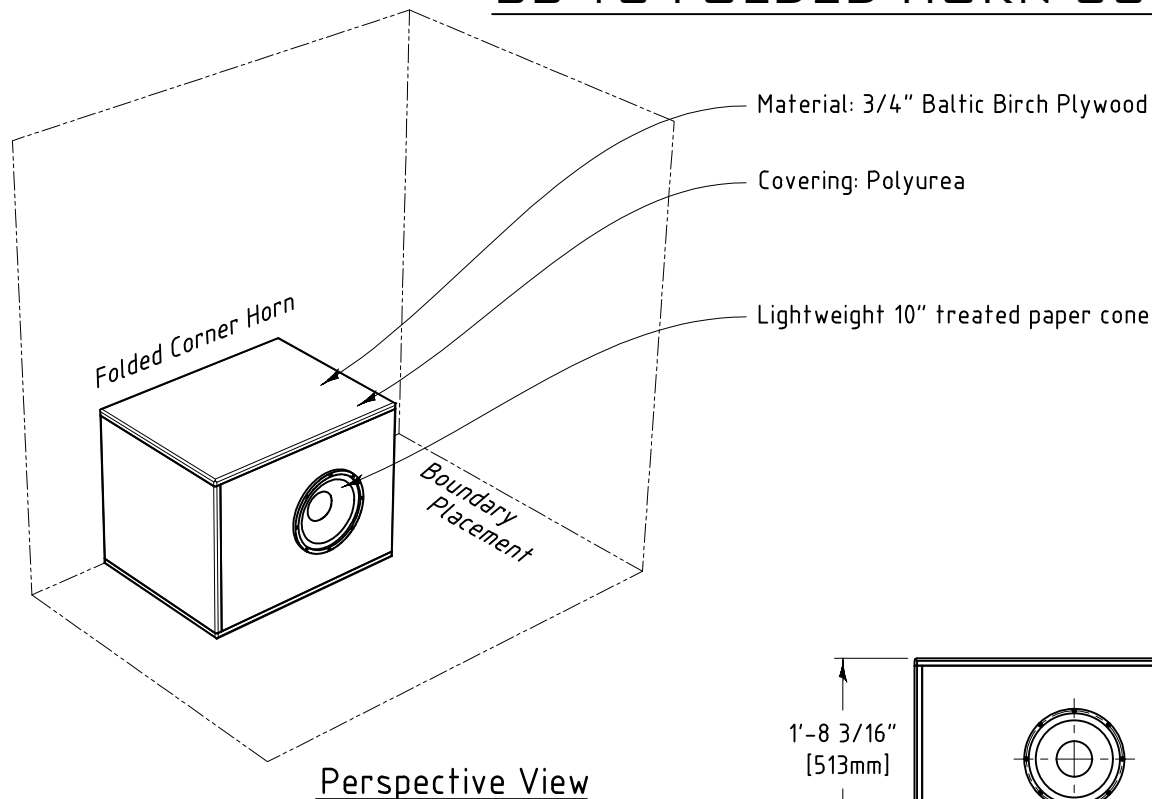


## BB-10 FOLDED HORN SUBWOOFER



Driver: Beta-10A 10" Driver 8 Ohm

The 10" speaker's 2" voice coil and 34 oz. magnet delivers the efficiency and power handling required to handle the demands of music.

### Key Features:

Kapton coil former

Polyamide-imide coated copper voice coil

Ferrite magnet

Pressed steel basket

In house treated paper cone for enhanced stiffness

Cloth accordion surround

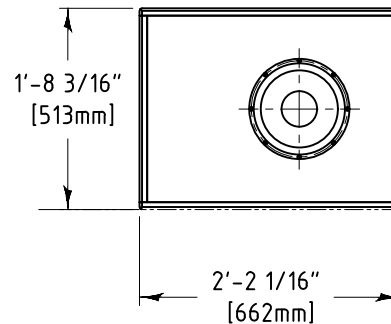
Folded Horn Bandwidth: 48 Hz-125 Hz

Efficiency: 106.5dB @ 1 Watt (Calculated)

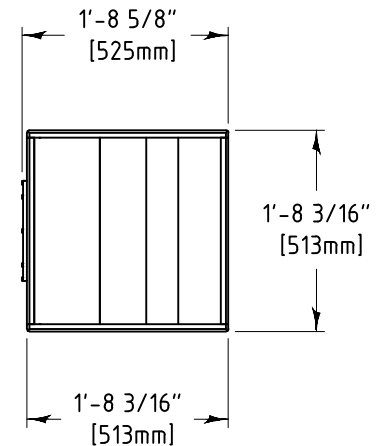
Power Handling: 500w Rms

Material: 3/4" Baltic Birch Plywood

Covering: Polyurea



SCALE: 1" = 1'



SCALE: 1" = 1'

[www.vanzylaudio.com](http://www.vanzylaudio.com)