



2025 EQUIPMENT SPECIFICATIONS CATALOG

The information you need to make every project successful.



AVAILABLE EQUIPMENT

- 32 Meter Five Section Z
- 33 Meter Z
- 38 Meter 5 Section Z
- 38 Meter R Fold
- 47 Meter RLZ Fold
- JMP 60 Line Pump
- JMP 90 Line Pump
- TB50 Telebelt x2
- TB110 Telebelt



32M

JXZZ 32-5.16 5 Section



32 Meter Five Section

With an unfolding height of 19 feet, the 33 Meter Five Section pump is a great option for all projects where there is a low overhead clearance, including power lines.

32M 5 SECTION SPECS

Outrigger Clearance

24' of clearance is ideal for a setup

Overall Length

37'

*Horizontal Reach

(from front bumper)

78'

Vertical Reach

103'

Unfolding Height

18'6"

Total Weight

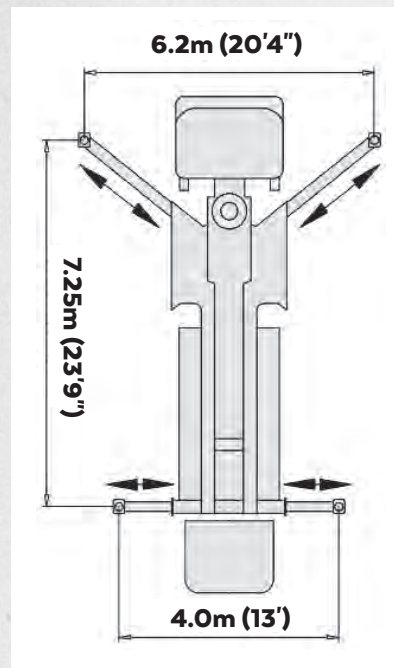
50,300 lbs

Maximum Yds. Per. Hr.

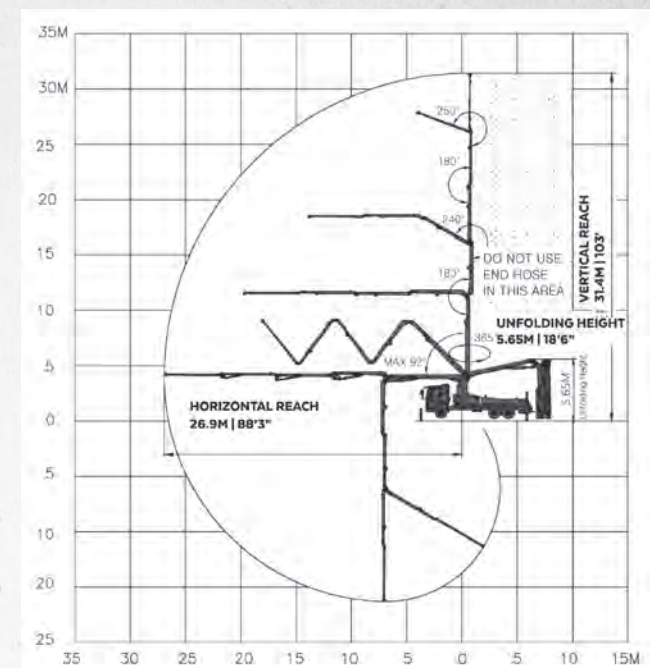
215 yds.

OUTRIGGER EXTENSION

(24' clearance is ideal)



BOOM PUMP REACH



33M



33M
JXZ 33-4.16

ALLIANCE
CONCRETE PUMPS

33 Meter Z Fold

The 33 Meter Z Fold pump features compact outriggers. This makes it an ideal choice for compact jobsites. The 24 ft unfolding height means it also works well for interior pours.

33M SPECS

Outrigger Clearance

24' of clearance is ideal for a setup

Overall Length

36'

*Horizontal Reach

(from front bumper)

87'

Vertical Reach

107'

Unfolding Height

24' 11"

Total Weight

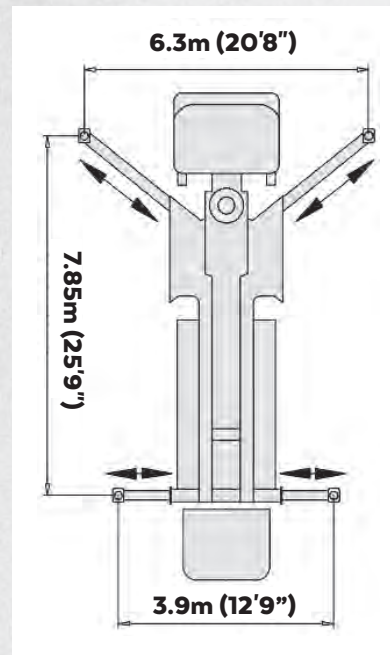
55,800 lbs

Maximum Yds. Per. Hr.

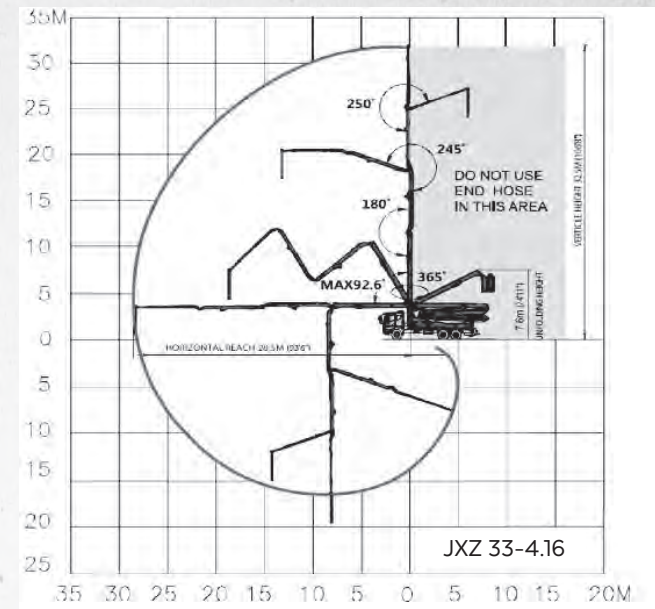
215 yds.

OUTRIGGER EXTENSION

(24' clearance is ideal)



BOOM PUMP REACH



38M
5 SECTION



38M

JXZZ 38-5.18 5 Section

ALLIANCE
CONCRETE PUMPS

38 Meter 5 Section Double Z

The 38 Meter 5 Section Double Z has a 24 ft unfolding height. This allows it to still complete interior pours while boasting a greater horizontal reach. The 18 cell pump kit allows the pump to handle larger pours with ease.

38M 5 SECTION SPECS

Outrigger Clearance

24' of clearance is ideal for a setup

Overall Length

39'

*Horizontal Reach

(from front bumper)

100'

Vertical Reach

110'

Unfolding Height

23' 11"

Total Weight

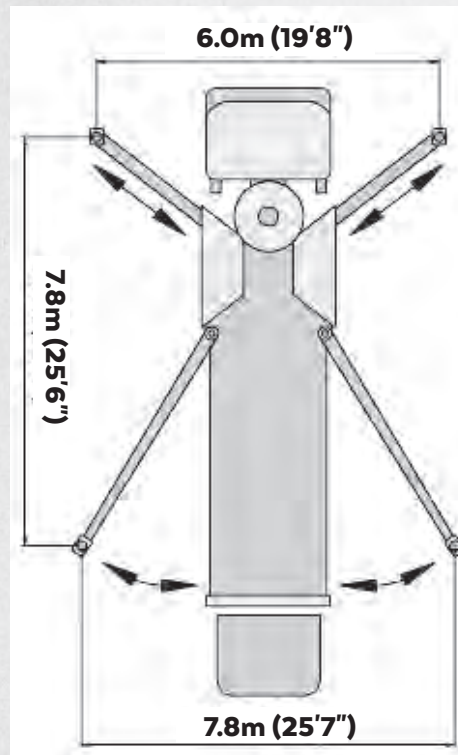
62,100 lbs

Maximum Yds. Per. Hr.

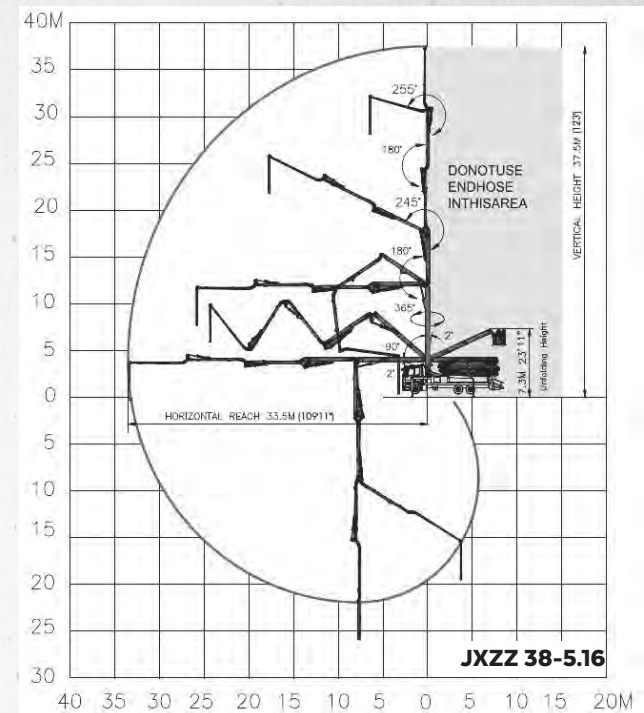
215 yds.

OUTRIGGER EXTENSION

(24' clearance is ideal)



BOOM PUMP REACH



38M
4 SECTION



38M
JXLR 38-4.16

ALLIANCE
CONCRETE PUMPS

38 Meter R Fold

The 38 Meter R Fold is the do-it-all pump truck. This pump performs equally on both commercial and residential projects.

38M R FOLD SPECS

Outrigger Clearance

24' of clearance is ideal for a setup

Overall Length

39'

*Horizontal Reach

(from front bumper)

104'

Vertical Reach

122'

Unfolding Height

28' 3"

Total Weight

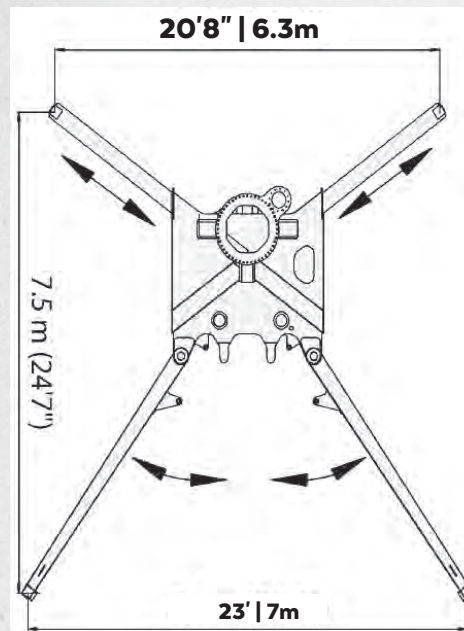
57,250 lbs

Maximum Yds. Per. Hr.

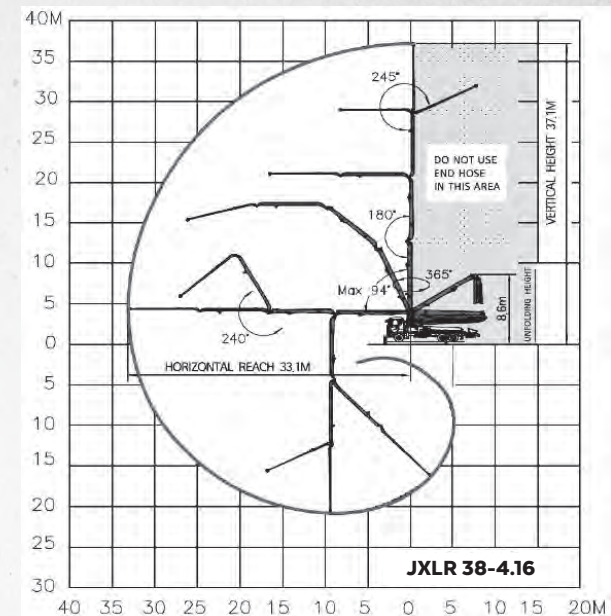
215 yds.

OUTRIGGER EXTENSION

(24' clearance is ideal)



BOOM PUMP REACH





47M
JXLRZ 47-5.16

ALLIANCE
CONCRETE PUMPS

47 Meter LRZ Fold

The 47 Meter LRZ Fold is the largest pump in the fleet. It thrives on large commercial projects. The 47 meter can complete large slabs, walls, and pours where vertical reach is needed with an impressive vertical reach of 152 ft.

47M SPECS

Outrigger Clearance

31' of clearance is ideal for a setup

Overall Length

43' 6"

*Horizontal Reach

(from front bumper)

127'

Vertical Reach

152'

Unfolding Height

42' 2"

Total Weight

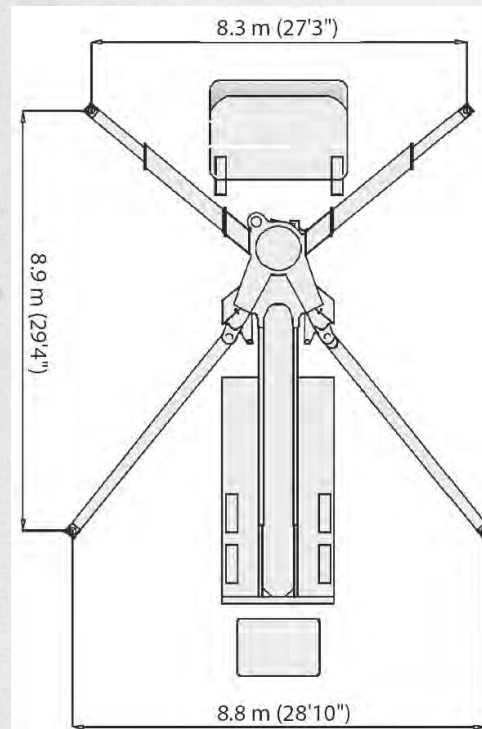
77,000 lbs

Maximum Yds. Per. Hr.

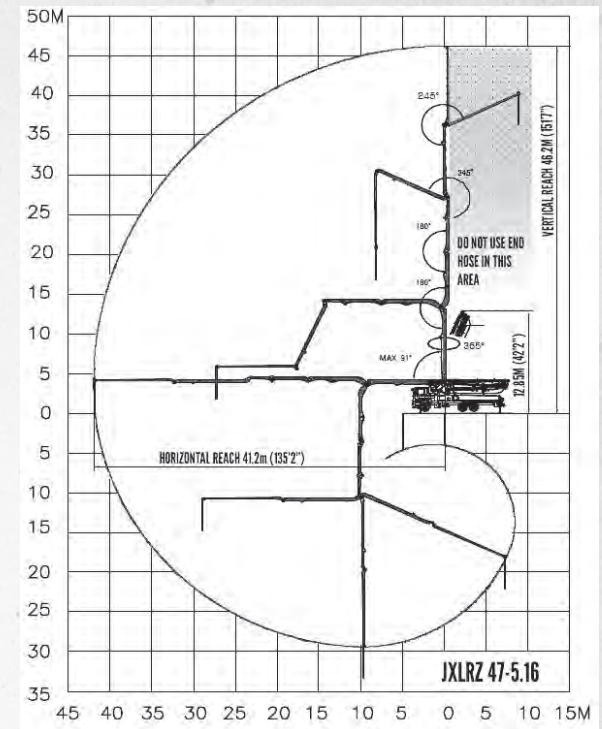
215 yds.

OUTRIGGER EXTENSION

(31' clearance is ideal)



BOOM PUMP REACH





JMP-60



Line Pump JMP 60

The line pump is best suited for projects with limited space. This includes residential and commercial projects with overhead obstructions and navigating around existing structures for stairwells, patios or walls.

JMP 60 LINE PUMP SPECS

Ideal Mix Designs & Hose Size

- 2"
- 2.5"
- 3"

Maximum Yds. Per. Hr.

83 yds

GENERAL

RADIO REMOTE	Wireless Transmitter System/w Tethered Backup Remote
VIBRATOR	Standard
WATER TANK	800 L (211 Gal)
WATER PUMP	Hydraulic Power 20 bar (290 psi)
TOOL BOX	Standard
WEIGHT	18,673 lbs /8,470 kg (Model As Shown)

PUMP

OUTPUT:	Rod Side	64 m³/h (83 yd³/h)
PRESSURE:	Rod Side	88 bar (1276 psi)
HARD CHROMED CONCRETE CYLINDER		180 mm x 1000 mm (7" x 39")
S-TUBE SIZE		180 mm x 127 mm (7" x 5")
OUTLET		127 mm (5" HD)
MAX. AGGREGATE SIZE		63 mm (2.5")
HYDRAULIC PUMP		Rexroth Hydromatic A11V0145
HYDRAULIC SYSTEM PRESSURE		350 bar (5076 psi)
SWITCHING SYSTEM		Hydraulic w/Manual Override
LUBE SYSTEM (HOPPER)		Lincoln Automatic Greaser
HOPPER CAPACITY		Easy Clean 450 L (119 Gal)



JMP-90



Line Pump JMP 90

The JMP 90 is the bigger brother of the popular JMP 60, ideal for projects small and large with the ability to use larger hose sizes than smaller Line Pumps.

JMP 90 LINE PUMP SPECS

Ideal Mix Designs & Hose Size

- 2"
- 2.5"
- 3"
- 4"

Maximum Yds. Per. Hr.
118 yds

GENERAL

RADIO REMOTE	Wireless Transmitter System / w Tethered Backup Remote
VIBRATOR	Standard
WATER TANK	750 L (198 G)
WATER PUMP	Hydraulic Power 20 bar (290 psi)
WEAR PARTS	Carbide
OUTRIGGER	Rear Hydraulic / Vertical Extension
TOOL BOX	Standard
WEIGHT	23,635 lbs /10,720 kg (Model As Shown)

PUMP

OUTPUT:	Rod Side	90 m ³ /h (118 yd ³ /h)
	Piston Side	60 m ³ /h (78 yd ³ /h)
PRESSURE:	Rod Side	71 bar (1030 psi)
	Piston Side	106 bar (1536 psi) †
STROKES PER MINUTE	Rod Side	32
	Piston Side	22
HARD CHROMED CONCRETE CYLINDER	200 mm x 1400 mm (8" x 55")	
S-TUBE SIZE	200 mm x 178 mm (8" x 7")	
OUTLET	152 mm (6" ZX)	
MAX. AGGREGATE SIZE	63 mm (2.5")	
HYDRAULIC PUMP	All Hydraulic Switching System A11V0145	
HYDRAULIC SYSTEM PRESSURE	350 bar (5076 PSI) †	
SWITCHING SYSTEM	Hydraulic w/Manual Override	
LUBE SYSTEM (HOPPER)	Lincoln Automatic Greaser	
HOPPER CAPACITY	Easy Clean 600 L (21.1 cubic feet)	

†Not to be used through boom pipe
Contact your sales rep for your chassis options.
Alliance Concrete Pumps Inc. reserves the right to make changes to all specifications



Telebelt® TB50
Telescopic Belt Conveyor



TB 50

The TB 50 is well suited to place a variety of materials for residential projects with a reach of 50 ft. Concrete and gravel can both be placed with the TB 50.

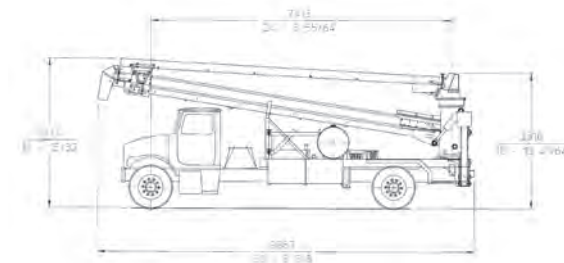
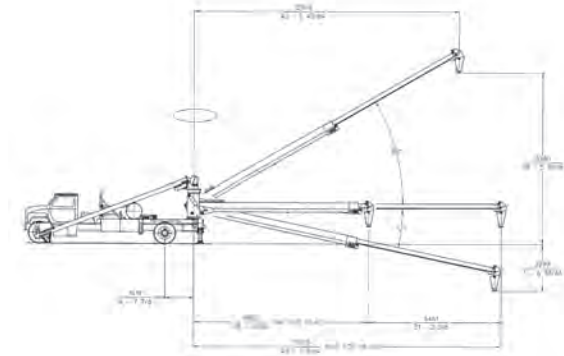
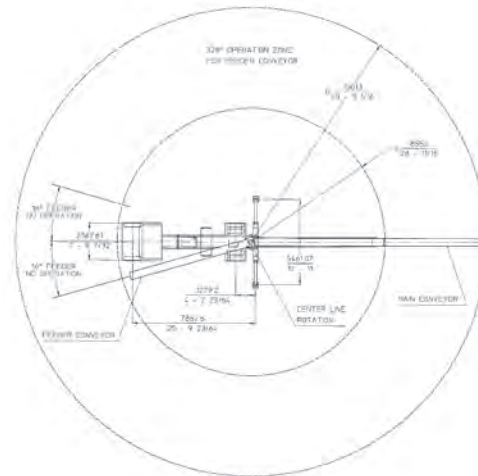


TB 50 Belt Conveyor Specifications

Conveyor horizontal reach –			Discharge height –		
Maximum at 0°	50'	(15.24m)	Maximum at 30°	27' 6"	(8.4m)
Maximum at 30°	42' 6"	(12.9m)	Maximum at -12°	-19' 7"	(-6.0m)
Conveyor belt width	16"	(406mm)	Rated capacity at 0°		
Feed conveyor length	27'	(8.2m)	Main & feed conveyors	80 yd ³ /hr	(61m ³ /hr)
Feed conveyor belt width	16"	(406mm)	Rated capacity up to 20°		
Trunk/end hose length	8'	(2.4m)	Main & feed conveyors	50 yd ³ /hr	(38m ³ /hr)
	12'	(3.6m)			

Maximum theoretical values listed above.

TB 50 BELT CONVEYOR SPECS



TB110



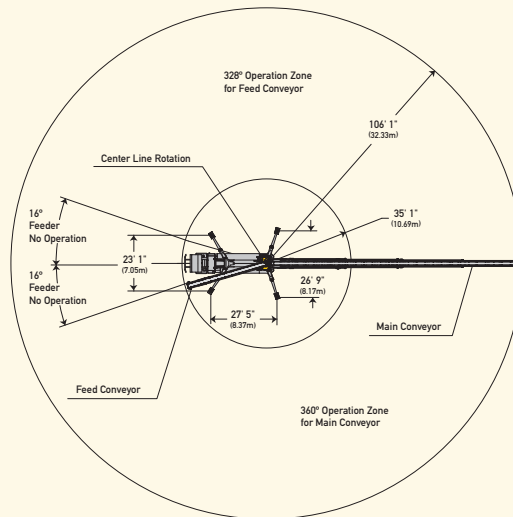
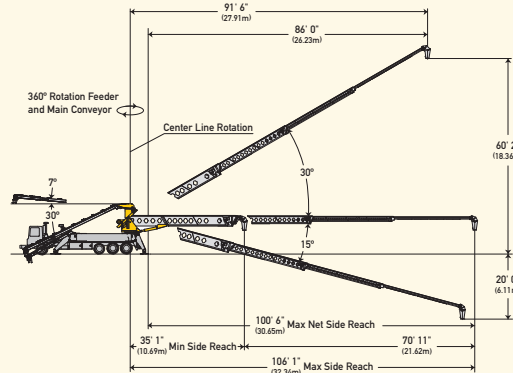
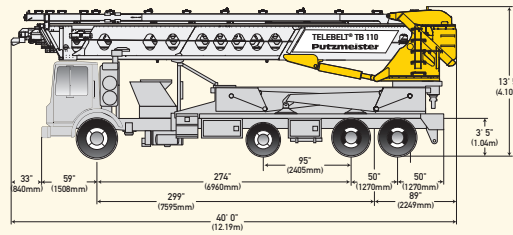
Telebelt® TB110
Telescopic Belt Conveyor



TB 110

With a horizontal reach of 106 feet, the TB 110 can handle larger projects such as bridge decks, while still fitting into tight spaces with a height as low as 16 feet.

TB 110 BELT CONVEYOR SPECS



Telebelt® TB 110 Specifications

Conveyors

Conveyor horizontal reach		
Maximum at 0°	106' 1"	(32.34m)
Maximum at 30°	91' 6"	(27.91m)
Conveyor belt width		
	18"	(457mm)
Feed conveyor length		
	38' 0"	(11.60m)
Feed conveyor belt width		
	18"	(457mm)
Trunk/end hose length		
	15' 0"	(4.57m)
Discharge height from grade		
Maximum at 30°	60' 2"	(18.36m)
Maximum at -15°	-20' 0"	(-6.11m)
Main & feed conveyors		
Observed capacity at 0°	5.00 yd ³ /min	(4.00m ³ /min)
Observed capacity at 20°	5.00 yd ³ /min	(4.00m ³ /min)

Outriggers

Net reach beyond outriggers —		
at 0°	100' 6"	(30.65m)
at 30°	86' 0"	(26.23m)
Outrigger spread L-R — front manual out, hydraulic extended down		
	23' 1"	(7.05m)
Outrigger spread L-R — rear manual out, hydraulic extended down		
	26' 9"	(8.17m)
Outrigger spread front to rear		
	27' 5"	(8.37m)

General Specifications

Water tank capacity	200 gal	(757 L)
Hydraulic oil tank capacity (with cooler)	150 gal	(568L)

Truck Specifications *•+

Weight	20,525 lbs	(9,310kg)
Engine horsepower	405 hp	(302kW)
Wheelbase	299"	(7,595mm)
Cab height	104"	(2,642mm)
Steering radius (outside)	45' 6"	(13.87m)
Steering angle	30°	
Fuel tank capacity	80 gal	(303L)
Transmission	Mack T310 10-Speed	

Transport Axle Weights *•+

Steering	19,008 lbs	(8,621kg)
Pusher	10,000 lbs	(4,535kg)
Tandem	33,754 lbs	(15,309kg)
Total	62,762 lbs	(28,465kg)

Maximum theoretical values listed.

* Truck dimensions will vary with different truck makes, models and specifications.

• Weights are approximate and include truck, fuel, and 100 gal (379L) of water.

+ All specifications apply to units mounted on Mack MRU 613.



Custom

Concrete Pumping

**3510 West Main Street
Belleville, Pennsylvania 17004, United States**

Office: 717-935-5557 | Dispatch: 717-437-1898

**For pricing or special requests call Dispatch or email info@ccpofpa.com
Billing, invoice, or payment questions? Call the Office.**

Visit us at **www.ccpofpa.com**