



930 Edgewood Road Wausau, WI 54403

(Change Service Requested)

APRIL 2020

Non-Profit Org.
U.S. Postage
Paid
Brokaw, WI 54417
Permit No. 1



GATHER in Blessings * **GROW** in Purpose * **GO** with Passion

APRIL 2020 . Volume 55 . Issue 4

INSIDE THIS ISSUE:

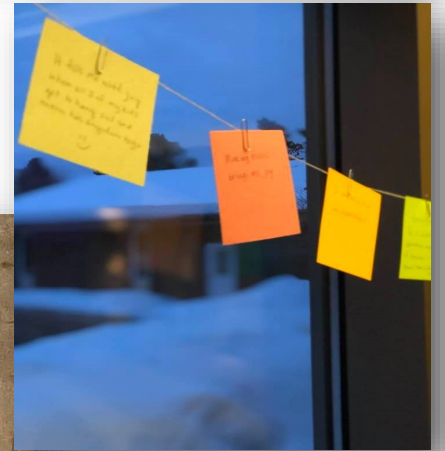
- PG 1: MAILING COVER/ INSIDE THIS ISSUE
- PG 2: ASH WEDNESDAY MEMORIES
- PG 3: PASTOR KEMP'S PAGE
- PG 4: CURRENT CONNECTIONS WITH WORSHIP
- PG 5: STEWARDSHIP / FINANCE / CHALLENGE
- PG 6: BIRTHDAYS & ANNIVERSARIES
- PG 7: CHURCH COUNCIL REPORT
- PG 8: PARISH NURSES / STAFF INFO
- PG 9: ENDOWMENT FUND GRANT APPLICATION
- PG 10: SIMPLY GIVING ACH AUTHORIZATION FORM

**We Miss You!
and we are
Looking forward
to
being together
Soon!**

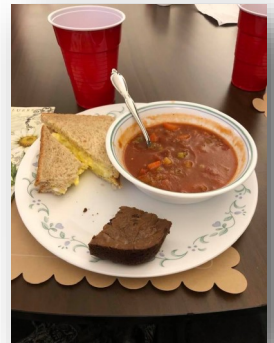
**Stay Safe.
Choose Joy!**



Ash Wednesday 2-26-20



Student assisted Service



Well, to say a lot has changed since I wrote last month's Newsletter item would be the understatement of the hour. I say that because right now, our world almost seems to change dramatically every 60 minutes or so. It has been a grueling couple of weeks as I sit to write on March 21, 2020. None of us would have ever predicted we would be where we currently find ourselves ... socially isolating, quarantined or sequestered, unable to get our own beverage from the machines at Kwik Trip, no haircuts or manicures, reduced to restaurant drive-thrus or take-out options. It is absolutely surreal ... with no end in sight. And that is truly unsettling.

Still, it's kind of humorous how omniscient ("all-knowing") one can appear to be when they aren't trying. Since January, we have been walking through the three core challenges I placed before our congregation via my Annual Report and newsletter item for January. I urged us toward a five-year discovery process around the following:

Building and cultivating awareness of God in our everyday lives.

Reconnecting to God's story ... and who we are as God's people.

Creating environments that help people make spiritual meaning out of their lives.

The "assignment" for this month would be to unpack the third challenge above. And as fate would have it, necessity has been the mother of invention the past few weeks and we have been drowning ourselves (baptismally speaking) in the creative process. So far new environments for spiritual growth have mostly sprung up in the online arena because that seems the area most immediately ripe for broader impact. Worship services are continuing to be delivered via that venue, hymns and spiritual songs are now bouncing around the virtual airways, and more ideas than I could ever list are being bantered about that we hope might help us to maintain (and even build) community with each other while we are trying to remain out of close proximity for the foreseeable future.

I miss you folks and your comings and goings. And I'm an introvert! Someone said recently that we introverts have been training for a time like this our whole lives. I cannot imagine what the extroverts among us are going through right now. I grieve with all of you over what we are experiencing. These are extremely tough times unlike most of us have ever seen.

But we're still here, and we will be here when this is all over too. Count on it!

Lutheran ecclesiology ("church talk") places such emphasis and centrality on the assembled community gathering around word and sacrament. I'm not saying that's a bad thing. I love that part of our identity. But it does leave your Pastor's head spinning during times like these. Our "church talk" is not exactly robust with advice about what you do in times of pandemic. But interestingly, Martin Luther did write about the subject 500 years ago in response to the Black Death Plague. *"Whether one may flee from a Deadly Plague,"* Luther writes, *"I shall ask God mercifully to protect us. Then I shall fumigate, help purify the air, administer medicine and take it. I shall avoid places and persons where my presence is not needed in order not to become contaminated and thus perchance inflict and pollute others and so cause their death as a result of my negligence. If God should wish to take me, he will surely find me and I have done what he has expected of me and so I am not responsible for either my own death or the death of others. If my neighbor needs me however I shall not avoid place or person but will go freely as stated above. See this is such a God-fearing faith because it is neither brash nor foolhardy and does not tempt God."*

There is wisdom to be found in these words for folks who in this moment are navigating mostly uncharted waters. It encourages me toward being malleable and pliable and nimble and responsive to the needs in the moment so that the creative process can work to its fullest, most Spirit-filled potential. I am so proud of my clergy colleagues and the work they are doing. It is truly awe-inspiring. The sharing that is happening amongst congregations near and far is beyond anything I could ever imagine. Additionally, I could not find any more praise to heap upon our great staff who are so dedicated to your well-being, and who are deeply concerned about nurturing your spirits. This is important work, and I assure you it is being given utmost consideration. Your patience and grace toward us is coveted. We are walking through times we have never walked through before ... but we are together. And together ALL of us will move forward until we reach the end of this difficult season. We are united in the goal of trying to hold together our community of faith to the best of our energies and abilities during an unprecedented time when we cannot physically be together. We may not be able to accommodate every wish, desire or idea, and we may not even be able to bring all of the ideas that we are currently working on to fruition, but we know there is meaning to be made out of all of this, and we are committed to doing so. And ultimately, what binds us together is this: God is still good.

Christ is still risen.

A new day will dawn.

And the Church will be stronger.

Peace ... Pastor Kemp



For the time being, worship services and all church related ministries are suspended. We are following recommendations of President, WI Governor, our ECSW Synod and the CDC.



Our priority is for you to know that your church is available to you and while that looks different, we are implementing plans to reach out by phone to keep in touch, receive and lift prayers, and provide many choices for keeping an active faith life.



We need your help. We ask you to step in where you can if someone is in need. Where you can't, please let us know in the office so we can deploy someone.



Calendars have been removed from the website and this newsletter for the time being so that we do not cause further confusion. We will share information when there is a change.



For the time being, You are welcome to call the church anytime. We will help in any way we can. We are working both from home and in the office, so leave a message and we'll respond at our earliest convenience. (see pg. 8 to reach staff)

Worship & Resources

Good Shepherd is online:

YOUTUBE: GSLC Wausau WI (Hit SUBSCRIBE and you will get notified when there are new videos)

FACEBOOK: <https://www.facebook.com/gslcwausau/>

GSLC WEBSITE: www.gswausau.org

ZOOM: Watch your email for the opportunity to join in online group chats

Other Resources:

<http://elca.org/PublicHealth> Guidance resources for congregations and members from the ELCA

LUTHERAN HOUR MINISTRIES/ Daily Devotions: lhm.org

DAILY DEVOTIONALS ARE HERE: Christ in Our Home & Portals of Prayer

We have a challenge!

To say we have a challenge is a vast understatement in these times of staying healthy but home, connected but distant, spiritual but distracted. People feel people scared, frightened, anxious and now separated and lonely.

Good Shepherd's mission is more critical than ever! We continue our mission of gathering in blessings, growing in purpose and going with passion, especially when we don't gather. It has been very encouraging to see them accessing our mission, through email, Facebook, phone calls and online. Good Shepherd makes a difference! Our first online service has already had over 500 views. Wow! Good Shepherd's mission continues with our support in these critical times.

A generous Good Shepherd family offers a challenge of up to \$5000 to help people continue to support our vital mission even when there is no offering plate to pass. The challenge comes in three parts, so we invite you to participate in a way that works for you.

Part 1. For every family that signs up for monthly automatic giving through the **Simply Giving Program** (automated weekly, bi-weekly, or monthly giving), a gift of \$150 will be released (up to \$1500). Contact the church office at 715-675-1997 or brian.gslcfinance@advanit.com for the necessary documents. A Simply Giving Authorization form is attached on page 10.

Part 2. For every family that donates on-line through our web site (**GIVE+**) a gift of \$200 will be released (up to \$2000). Simply go to www.gswausau.org and click on the donate button.

Part 3. You can still mail a check! For every family that turns in an offering envelope before Easter, an additional \$30 will be added (up to \$1500). Mail them to 930 Edgewood Rd, Wausau, WI 54403.

Our mission is critical, the time is near. Together we will keep worshiping, reaching out, ministering to each other, and **gathering, growing and going.**

T H A N K Y O U

To everyone who has already switched to online recurring giving options as well as mailing and dropping off your offering gifts. IT IS GREATLY APPRECIATED!

IF YOU ARE SHOPPING ON AMAZON, by choosing [www.smile. Amazon.com](http://www.smile.amazon.com), a percentage goes to the designation of your choice. Choose Good Shepherd!

Thinking Ahead: Softball & Dartball Greg Behrendt 715-842-9358

Is it not fair to say that most every young boy's first love is BASEBALL?

Reconnect with your childhood passion and find your own special GS community network by joining our own Good Shepherd Pointers softball team. Contact Greg Behrendt for now.

They play Sunday nights out at Sunnyvale Park. Families and crowds welcome!

Ps...There are lots of slots open so all players are being called in!

The Dartball Banquet is scheduled for June 1st at St. Marks in Wausau at 6 pm

since the season was cut short. Contact Greg with questions.

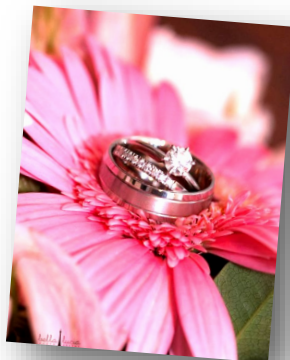
APRIL Birthdays

HAPPY BIRTHDAY

1	Michael Selby	17	Luke Gallagher		Sara Weimerskirch
3	Camden Majewski		Richard Leih	24	Ali Ramthun
	Kay Wiskofske		Marcie Maurer	25	Jan Bootz-Dittmar
5	Susan Jirgl		Eileen Neumann		Annette Lauby
	Evelyn Trapp	19	Alice Edwardson		John Sickels
	Ty Wichlidal	20	Bev Korpita	26	Keith Laszewski
6	Brandt Schreiber		Chris Petterson	27	Taylor Fremming
7	Cody Beyersdorff		Chase Reich		Clara Merkel
	Gary Jarntowski	21	Pam Daigle		Jennifer Samperisi
	Tara Krezine		Arizona Springer	28	Chad Majewski
8	Katelynn Hayes		Diane Worden		Karen Lakus
9	Kerri Stapleton		Dolores Zimmerman		Blake Waldinger
	Ross Reich	22	Brian Baumann	30	Dale Anderson
10	Brettan Curtis		Stella Boettcher		Kaitlynn Bargender
12	Thomas Cloutier		Susan Gering		Jarret Miles-Kroening
	Brenda Bargender	23	Tyler Beyersdorff		
16	Jenny Glovinski		Christian Boulanger		
	Stephanie Martell		Pastor Kemp Jones		
	Ross Reich		Helen Vance		

APRIL Anniversaries

1	Tom & Jane Cloutier
7	Tim & Tanya Woods
11	Richard & Arlene Henke
	Gerald & Joan Madden
	James & Kay Walters
15	Dave & Brenda Blaubach
22	Cristofer & Paula Trantow
28	John & Michelle Ellenbecker



Love is patient, love is kind. It does not envy, it does not boast, it is not proud. It is not rude, it is not self-seeking, it is not easily angered, it keeps no record of wrongs. Love does not delight in evil but rejoices with the truth. It always protects, always trusts, always hopes, always perseveres. 1 Corinthians 13:4-7

Good Shepherd Lutheran Church, Wausau WI
Church Council meeting minutes

February 11, 2020

Call to Order – 6:30 pm

- Present: Pastor Kemp, Dorie, Tim, Jenny, Heidi, M. J., Brad, Steve, Josh, Paul.
- Special welcome to incoming councilmembers: Steve Herring, Geri Luer & Josh Stumpner

Gathering Litany – Pastor Kemp

God's Word

- Devotional time – Pastor Kemp (From "Growing Together" Melander & Eppley; Matthew's take on 'Church' and community, our collective expectations, meaningfulness / fulfilling.) [March – Paul, April – Geri, May – M.J., June – Brad, July – Steve, August – Heidi, September – Josh, October – Jenny, November – Cory, December – Dorie]
- Sharing how you have seen God at work lately – ALL

Review

- Agenda review - M.J. / Brad APPROVED
- Minutes review – Tim / Heidi amended APPROVED
- Treasurer / Financial Report - (Cory is assuming the responsibilities of Treasurer from Tim. January contributions of \$22K were less than 1/12th of budgeted annual expenses but January is typically a low month [possibly because people advance their contribution into December for Christmas]. Expenses are trending close to budget. Deviation is mostly beginning of year wage calculation bookkeeping entries.) – Steve / Jenny APPROVED

Our Response to the Word (old business / open items)

- **Council Executive Positions:** 2019 – Appreciation was expressed for the 2019 executives, with special attention to the outstanding contributions of Dorie Johnson, 2020 - Anticipation
- **Nominations:** President – Timothy Logemann, Secretary – Paul Grewe
 - Candidates are considering ascendancy to Vice President, for special election soon
- **Elections:** Motion by Brad, second by Steve for unanimous consent to seat the two respective candidates. APPROVED
 - New President assumed meeting leadership
- **Kartika's Permanent Residency process:** Department of Homeland Security has confirmed receipt of continuing processing
- **Financial Secretary Position & responsibilities – forward planning:** Review; Bonnie's former responsibilities have been temporarily assumed by consultant Brian. Jenn Tryba of Personnel Committee is constructing a Job Description and beginning initial recruiting. Responsibilities and hours are expected to be fewer than previously.
- **Stewardship for All Seasons Update:** Having completed the initial step of establishing a pledge process, we now move toward Strategic Planning as a formalized process. Engagement of a dedicated S.P. consultant is being considered with special emphasis on identifying opportunities in our community which mesh with our strengths and mission.
- **Church Management Software / E-Giving software:** The need is acute, and individuals are researching platforms which best fit our in-process reorganization of Financial Secretary, with potential for serving other internal information handling needs.
- **Constitution:** Constitution Committee is finalizing changes into documents for presentation to the congregation. [Special thanks to Cari Logemann for legal expertise.] Special emphasis on future adaptability; for example, moving specific requirements from the body of the constitution into bylaws for more efficient updating.

New Business

- **Annual Meeting debrief**
 - **Time of year** – Considering move to more convenient and accessible month; perhaps Oct/Nov. Perhaps biannual
 - **Formality** – Considering loosening constitutional adherence to strict Robert's Rules of Order
- **"Equipping People In Congregations":** March 14 Shawano Tim and others will attend, Angie is coordinating
- **Lenten Meals:** Council will provide and serve March 4th; M.J. is coordinating

Action Items:

- ✓ Council members will assist and attend March 4 Lenten meal

Prayers of the Church / Lord's Prayer

Sending (motion to adjourn) Tim / Steve PASSED Adjournment 8:15 pm

Respectfully submitted,
Paul Grewe, GSLC Secretary

930 EDGEWOOD RD
WAUSAU, WI 54403
(715) 675.1997
info@gswausau.org
www.gswausau.org

Faith Based Activities with Kids

All ages can enjoy a "picture walk" to Calvary. Obtain or find reprints of religious art depicting the events leading to Easter. Some possibilities are Woodward's "The Triumphal Entry," El Greco's "Driving the Traders from the Temple," Prell's "Corruption of Judas," da Vinci's "The Last Supper," Clementz's "Christ in Gethsemane," and Ruben's "Christ on the Cross." Read or discuss the Bible story depicted. Or simply appreciate the beauty of the art and the feelings you get from viewing such exquisite works of art.

Design on black construction paper a silhouette depicting the city of Jerusalem or a hill with 3 crosses. Cut it out. On white construction paper wash over it with water color paint using horizontal strokes. This will become the sky of the silhouette and is most effective if deep reds and oranges are used (sunset) or very light blues and pinks (dawn). When the water colored sheet is dry, glue the black silhouette to the dry painted sheet.

We are called to share the burden of carrying the cross by helping those in need, showing love and doing kind deeds for others. Children and parents can write their acts of kindness to one another on cut out hand prints. After tracing their hand and cutting the hand attach the hand to a paper/poster board cross. Write on the cross "Share the burden of the cross."

Make butterflies to symbolize the new life we have in Christ at Easter. Take an old fashioned wooden clothespin that has no spring and tissue paper and scrunch up the tissue paper in the center of the clothespin. Fluff up the tissue paper and add pipe cleaner wire for antennas.

Discuss the story of the Last Supper and the symbols of Communion (wine, cup, bread, grapes, and wheat). Make some of the symbols out of paper and assemble them with yarn and drinking straws to make a mobile. Print the words Communion and forgiveness on white construction paper to hang from the mobile with the symbols. Symbols can be a cross, loaf of bread, wine chalice or grapes, or shaft of wheat. Paper punch holes in the symbols and tie to the yarn and straws. This can be made with 4 straws and 9 pieces of yarn of various lengths.

Reinforce the meaning of Easter by having a paper egg hunt. Cut egg shapes from colored paper and write messages on them such as "God loves you," "Jesus cares," "and "Jesus brings new life." Additional sayings could be "Jesus the good shepherd," "Jesus fisher of men" and "Jesus the light of the world." All the eggs of one color should have the same message, and there should be one egg of each color for each child. Tell the children to find one egg of each color. After hunting for the eggs gather together and discuss the messages on the eggs.

CORPORATE
WORSHIP
IS SUSPENDED
UNTIL
FURTHER NOTICE

We are offering online
worship services that are
Released:
(they remain available at
our youtube channel)

Sundays @ 8:00 am
Wednesday, April 1 @ 6:30 pm
go to GSLC Wausau WI
on Youtube, www.gswausau.org
Or Facebook

STAFF

Rev. Kemp Jones

Senior Pastor
pastork@gswausau.org
Office: 715.675.1997 ext: 306
C: 920.410.9210

Dr. Kartika Putri

Minister of Worship and Music
kartika@gswausau.org
Office: 715.675.1997 ext: 303
C: 319-230-0250

Angie Huckbody

Parish Administrator
angie@gswausau.org
Office: 715.675.1997 ext: 301
C: 715-574-6321

Brian Wiese

Interim Financial Secretary
Brian.gslcfinance@advanit.com
Office: 715.539.6700

Barb Denfeld

Mary Omernik

Parish Nurses
nurses@gswausau.org

Cory Toth LaPointe

Treasurer

ENDOWMENT FUND GRANT APPLICATIONS:

If you are part of a ministry or have a vision for Good Shepherd,
please take this advantage to utilize some funds.

The official deadline is March 31.

Due to recent events, we will extend the date until April 3rd. DON'T DELAY!!



ENDOWMENT FUND

Fund Objective:

The mission of this Fund is to provide a tool that allows people to give a gift or legacy as a means of extending the mission of Christ's church. The application of the funds received and disbursed will be consistent with the mission and purpose of the church in its Mission Statement. (Include additional sheets if more space is required.)

GRANT APPLICATION

NAME: _____

COMMITTEE / GROUP (if applicable): _____

DATE ESTABLISHED: _____

STREET ADDRESS: _____

MAILING ADDRESS (if different): _____

PHONE: _____ EMAIL: _____

CONTACT PERSON: _____

PURPOSE OF ORGANIZATION (include brief description of services provided):

PURPOSE FOR FUNDS REQUESTED:

TOTAL DOLLAR AMOUNT FOR PROJECT: \$ _____

TOTAL DOLLAR AMOUNT REQUESTED: \$ _____

HAS THE ENDOWMENT FUND SUPPORTED THIS ORGANIZATION IN THE PAST? Y / N

IF YES, HOW MUCH: \$ _____ DATE: _____

NOTES:

All requests will be acted upon following review by the Good Shepherd Endowment Fund Committee. Specific dates may be obtained by contacting the church office at 715-675-1997. All Requests must be submitted to the church office by March 31 to be considered that year.

GOOD SHEPHERD LUTHERAN CHURCH ENDOWMENT FUND COMMITTEE

930 EDGEWOOD RD * WAUSAU, WI * 54403 * 715-675-1997 * INFO@GSWAUSAU.ORG



