

CHAPTER 6

✓ THROTTLE ASSEMBLY & THROTTLE CABLES TO CARBURETOR ASSEMBLY

SECTION 1 THROTTLE ASSEMBLY

Throttle Assembly	6-1
Throttle Parts List	6-2
Figure TH-1	6-3
Figure TH-2	6-4
Figure TH-3	6-5
Figure TH-4	6-6

SECTION 2 THROTTLE CABLE TO CARBURETOR ASSEMBLY

Routing Throttle Cable To Carburetor	6-7
Attachment to the Carburetor	6-7
Figure TH-5	6-8
Figure TH-6	6-9

✓ CHAPTER 6

THROTTLE ASSEMBLY & THROTTLE CABLES TO CARBURETOR ASSEMBLY

Section 1

Throttle Assembly

Figures TH-1 - TH-4

NOTE: PART OF THE THROTTLE AND CARBURETOR ASSEMBLY WILL BE BEGUN NOW AND FINISHED LATER, DURING CHAPTER 17 / ENGINE MOUNT, ENGINE & EXHAUST ASSEMBLY.

1. Figure TH-1 (left side throttle handle assembly) Figure TH-2 (right side)
ATTACHING THROTTLE HANDLES TO THROTTLE CONNECTOR TUBE
 - a) Attach the throttle knobs (3) to the throttle handles (2) as shown. Begin with the left throttle handle (2). Place a washer (5) on bolt (4). Insert in top hole of the left side throttle handle. Add a throttle knob (3), note positioning, and secure with locknut (6). Repeat procedure for right side throttle handle assembly. Note position of the knobs in the figures, this position gives maximum room for larger pilots.
 - b) Attach the handles to the throttle connector tube (1). Using Figure TH-2 as a guide, lay out the throttle connector tube (1). On the right hand side end, slide on throttle spacer tube (7), making certain that the hole faces upward. Add throttle pivot block (9) and, finally, the right side handle.
 - c) On the left hand side, slide on the left throttle handle as viewed in Figure TH-1. Slide the second throttle pivot block (9) onto the handle.
 - d) Holes will be drilled later (step 3) into the connector tube to complete the attachment of the handles to the tube. The connector tube / handle assembly must first be temporarily attached to the cage to determine correct placement of parts / holes for drilling.
2. Figure TH-3 TEMPORARY ATTACHMENT OF CONNECTOR TUBE / HANDLE ASSEMBLY TO CAGE
 - a) Place washers (5) on the four bolts (8). Insert bolts through the holes on the two throttle pivot blocks(9). Screw the bolts into the pre-installed rivnuts on the cage rails. Be careful to avoid cross threading the rivnuts.
 - b) VERIFY THAT THE CONNECTOR TUBE (1) IS EVENLY INSERTED INTO THE THROTTLE PIVOTS BLOCKS (9) AND THAT THE HANDLES ARE SQUARED AND PARALLEL.
 - c) Because a drill will not fit down from the top, drill the bottom holes first. Locate the hole on the bottom of the right side handle base. Drill through that hole into the connector tube, using a 3/16" drill bit. Temporarily place bolt into hole after drilling, holding the handle in place so that it won't rotate. Repeat for left side handle.

✓ **Chapter 6** SECTION 1 THROTTLE ASSEMBLY

- d) Loosen the four bolts in the throttle pillow blocks, to remove the connector tube from the cage rail.
- e) Place the connector tube assembly on a level surface and drill the top holes.
- f) Remove the temporary "holding" bolts.
- g) Place washers (5) on two bolts (14) and insert down through the just drilled holes. Add a second washer (5) and secure with locknuts (6).
- h) Reinstall the assembly to the cage.

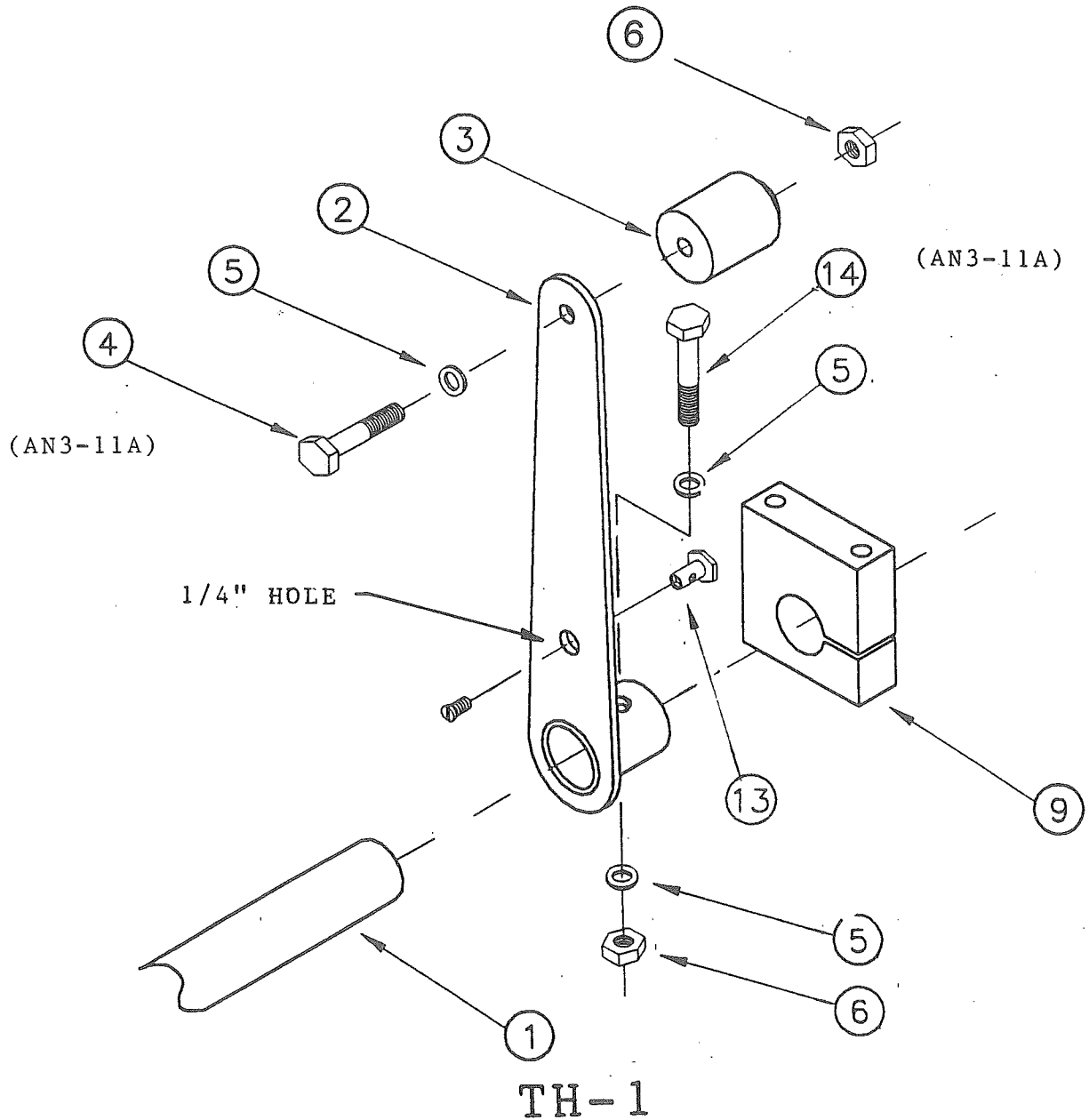
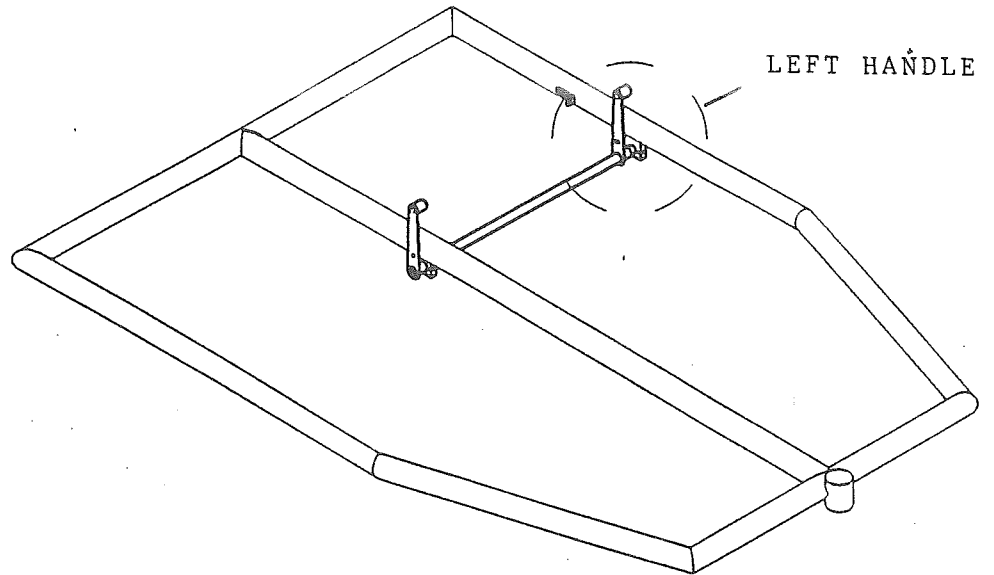
3. **Figure TH3** **INSTALLING THE THROTTLE HOUSING PLATE.**
 To Pre-Install the PS-226 throttle housing plate, drill a 3/16" hole 15" from the inside of the rear cage tube, 2" down from the top center line of the tube. See fig. TH-3 Chapter 6. Again note that the 15" dimension is measured from the inside of the rear cage rail.

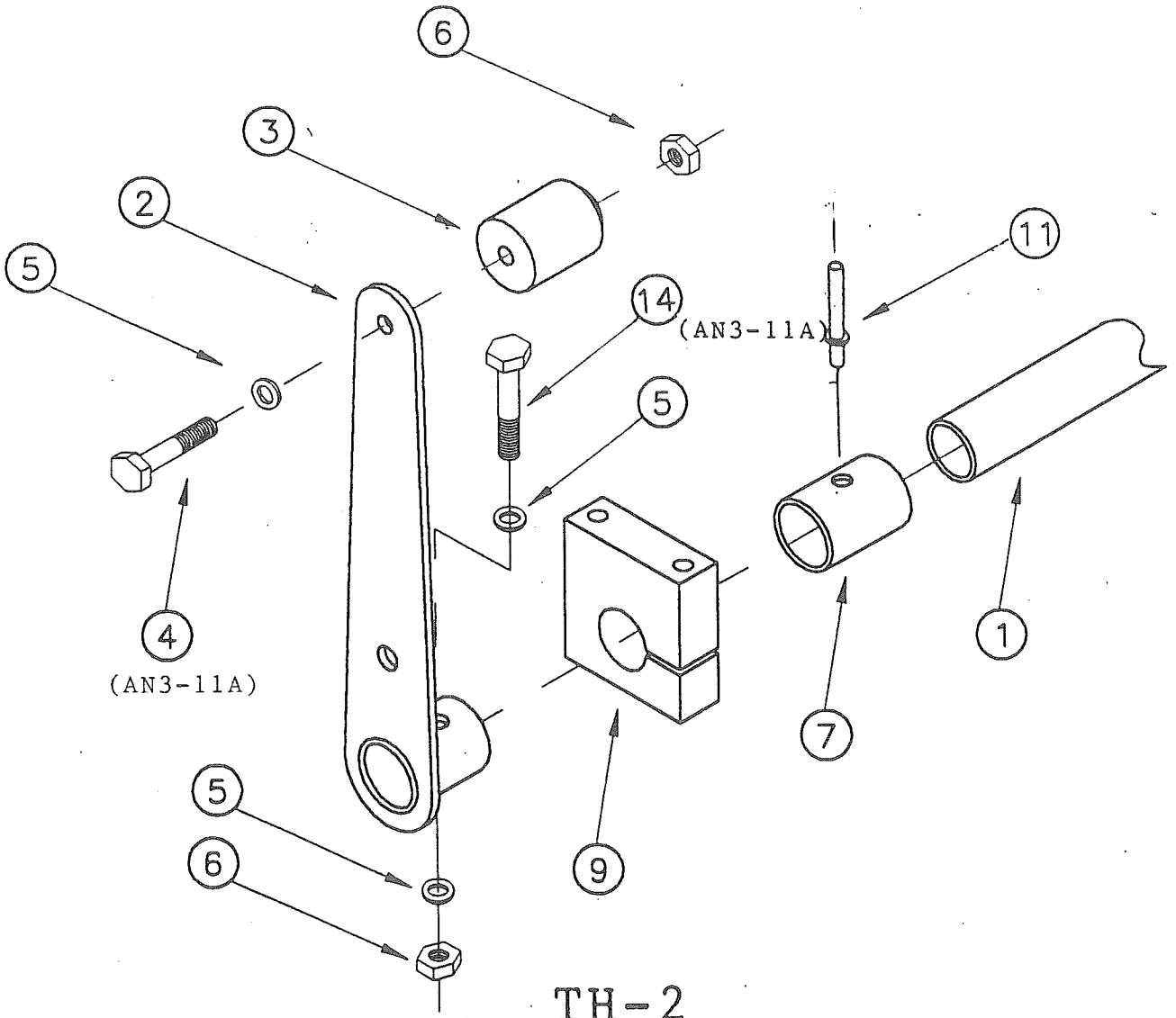
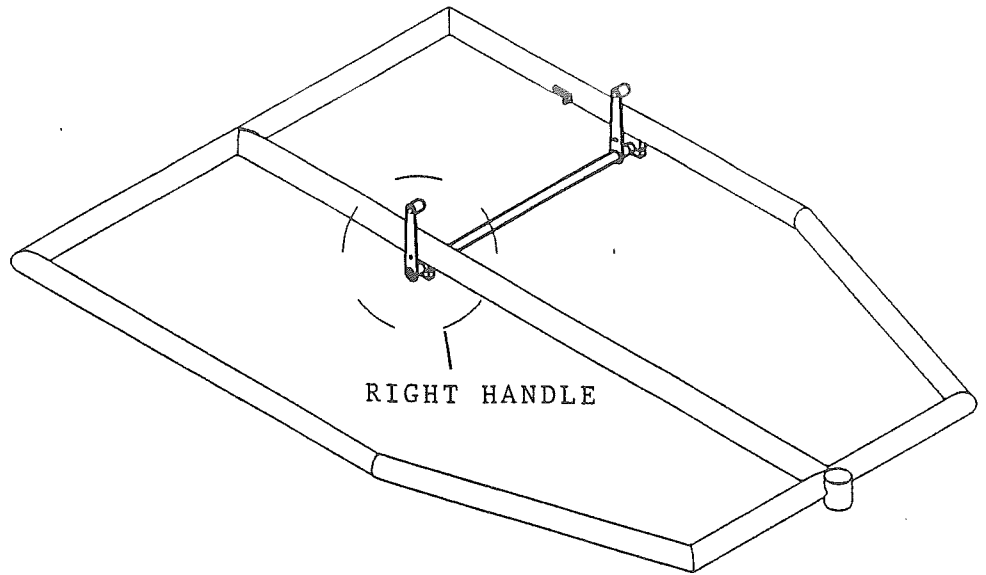
Figure TH-1 **INSERTING WIRE SWIVEL INTO THROTTLE ASSEMBLY**
 Insert the wire swivel (13) into the 1/4" hole from the back of the left hand side throttle assembly (2). This will be connected later.

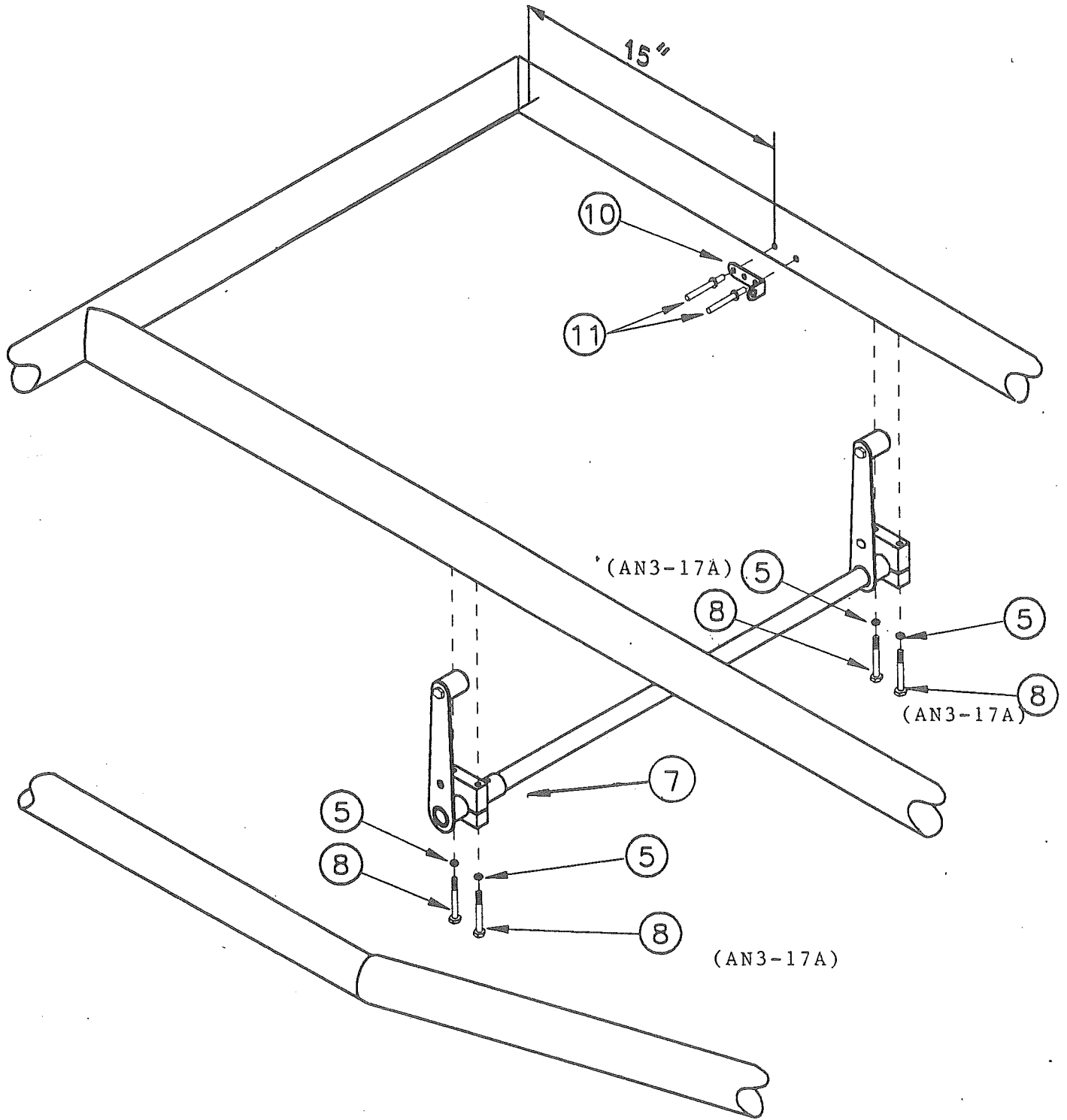
4. **Figure TH-4** **INSERTING CABLE ADJUSTER INTO THROTTLE HOUSING PLATE**
 Thread jam nut (15) down onto the cable adjuster (12) to approximately the middle of the cable adjuster. Insert the threaded end of the cable adjuster into the end hole of the throttle housing plate (10). Secure with the second jam nut (15).

Section 1
Throttle Parts List
Figures TH-1 - TH-4

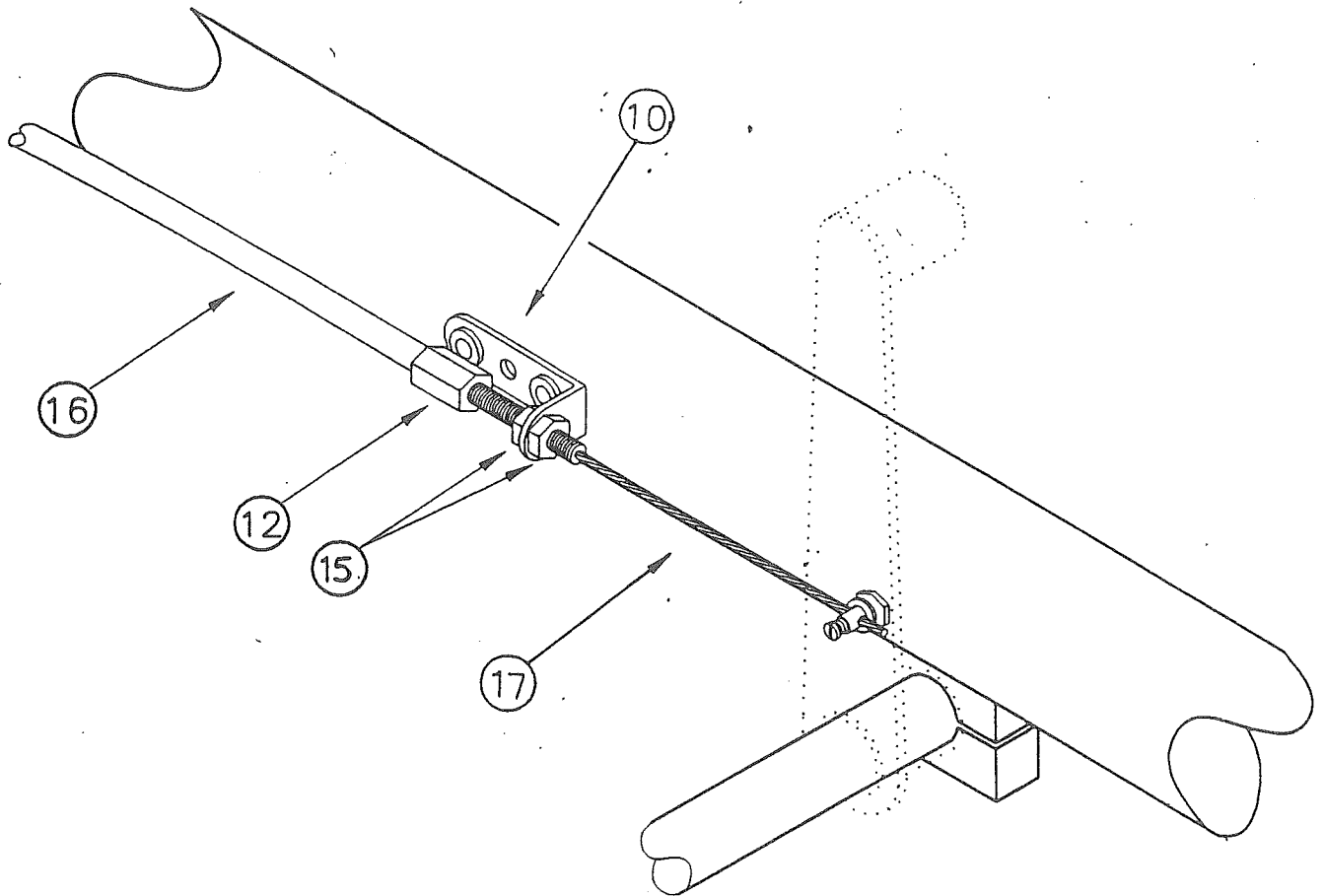
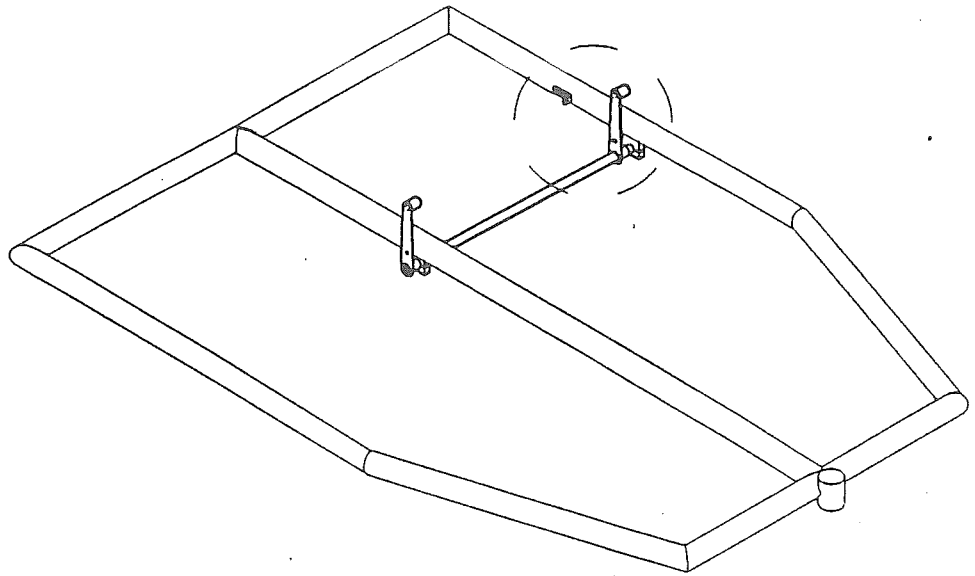
INDEX#	PART #	QTY	DESCRIPTION
1.	PS-259	1	THROTTLE CONNECTOR TUBE
2.	PS-260	2	THROTTLE HANDLES
3.	PS-50	2	THROTTLE KNOB
4.	AN3-11A	2	3/16" BOLT
5.	AN960-10L	10	3/16" WASHER
6.	AN365-1032	4	3/16" LOCKNUT
7.	PS-259-1	1	THROTTLE SPACER TUBE
8.	AN3-17A	4	3/16" BOLT
9.	PS-224	2	THROTTLE PIVOT BLOCK
10.	PS-226	1	THROTTLE HOUSING PLATE
11.	SS64	3	3/16" X 1/4" POP-RIVET
12.	BS-189	1	CABLE ADJUSTER
13.	CS-148	1	WIRE SWIVEL
14.	AN3-11A	2	3/16" BOLT
15.	AN316-4R	2	1/4" JAM NUT



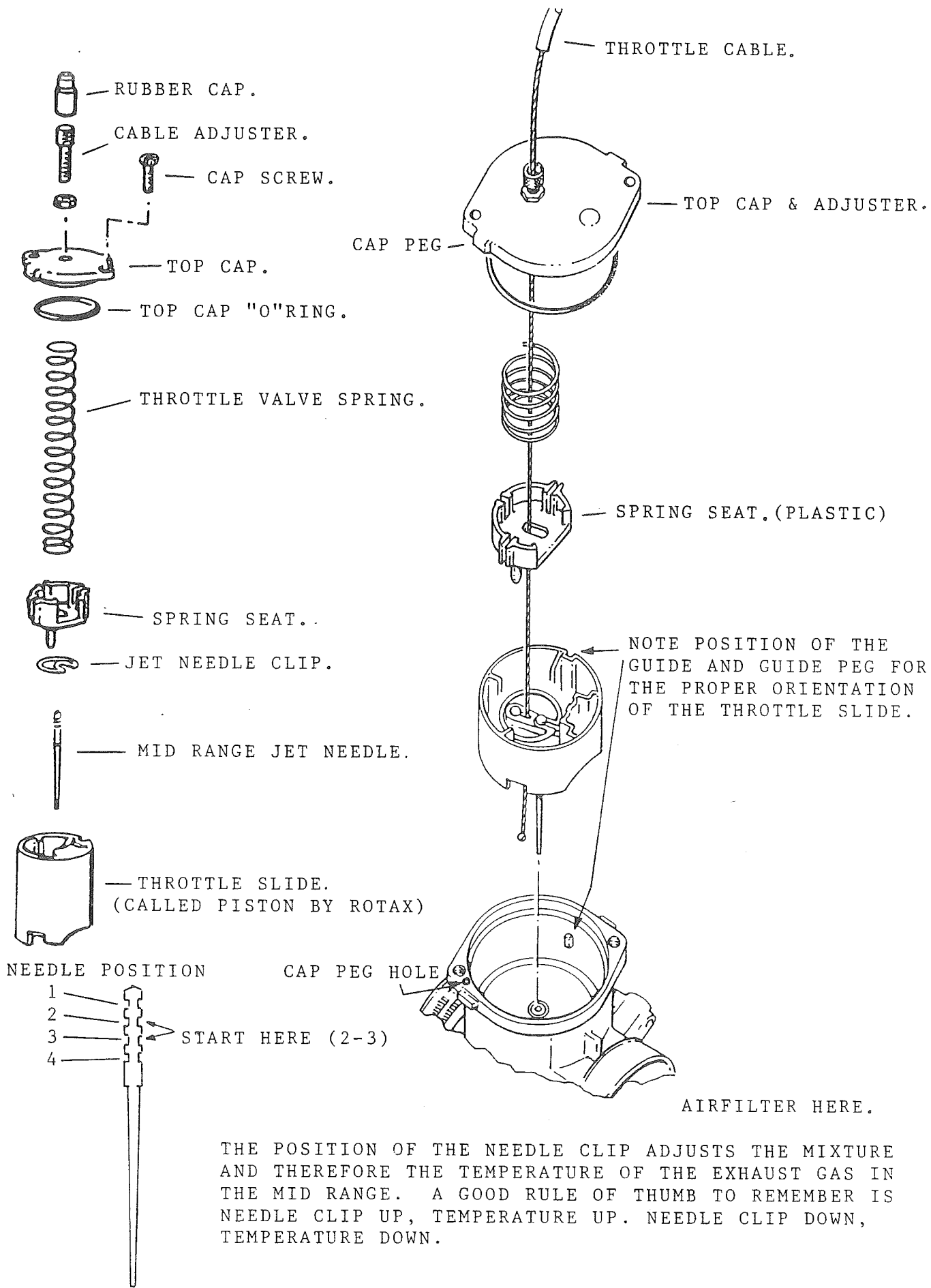


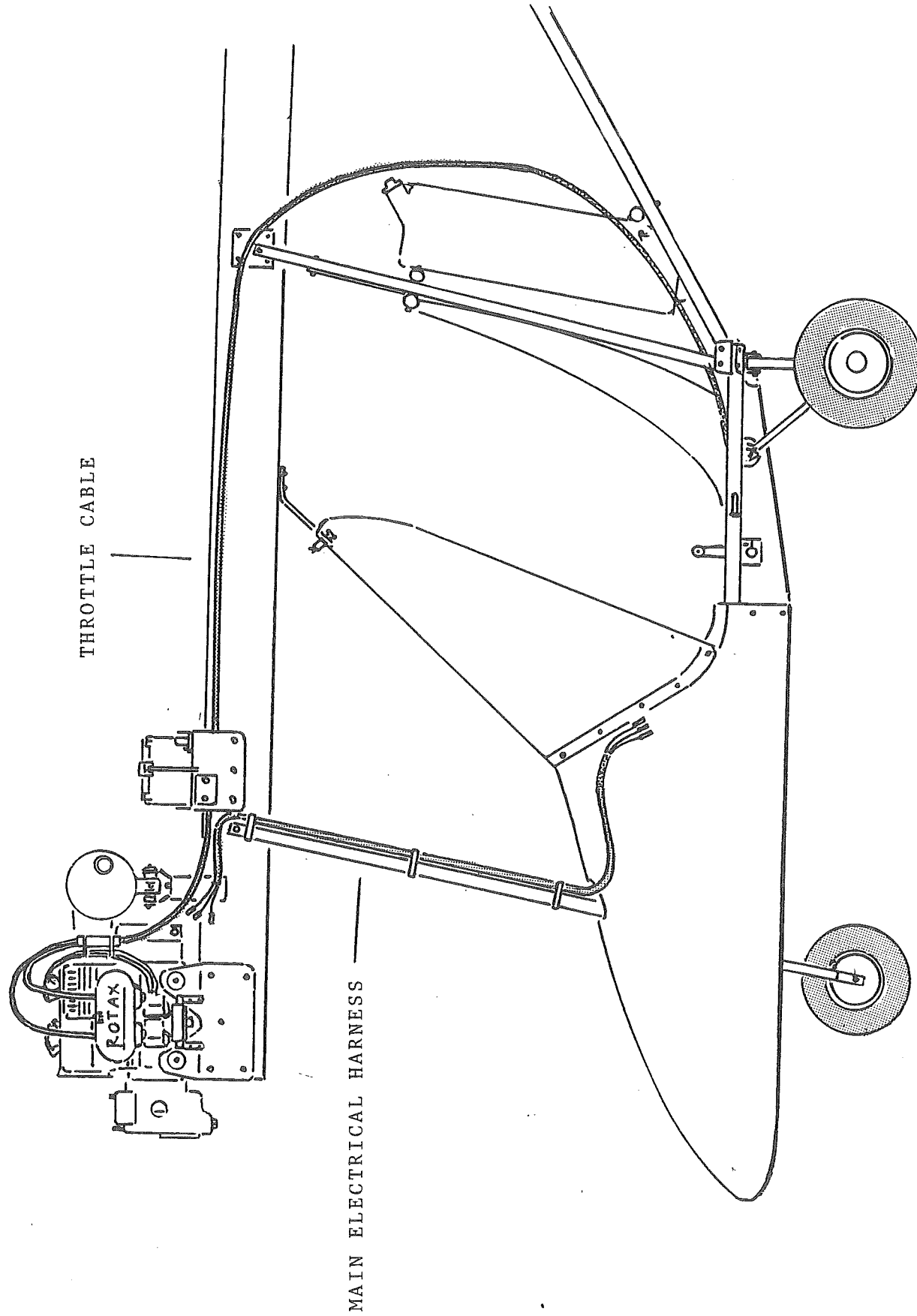


TH-3



TH-4





ROUTING OF THE THROTTLE CABLE.

