

Parker Stock Farm

2021 Production Sale

Farm Gate Timed Video Auction

<https://farmgatetimedauctions.ca/home>

Bidding starts at 9am June 11, 2021

Extended bidding starts at 7pm June 12, 2021



Glen and Kathy Parker

Registered Suffolk

Box 338 Three Hills, Alberta T0M 2A0

Glen cell 403-443-0401 Dr. Kathy cell 403-443-0064



parkerstockfarm@xplornet.com

Follow us on Facebook at Parker Stock Farm

www.parkerstockfarm.com

**Guest Consignor: DS Half Diamond Farm
Charollais**

Dan Sinclair and Dr. Ileana Wenger

Ph. 403-505-6491 dshalfdiamond@gmail.com

Follow us on Facebook at DS Half Diamond Farm





Timed Auctions Made Easy

During these challenging times Parker Stock Farm continues to “improvise, adapt and overcome”.

- Together with our sale partner, DS Half Diamond Farm, we will bring to you our 2021 sale offering starting at 9am June 11 by **Online timed Racehorse Style auction with extended bidding at close time. That means that the sale is not necessarily over at 7pm June 12th so long as bids continue to come in.**
- **Read on for more information on how to register and what “Racehorse style bidding” means.** We have chosen this format because it offers our customers significant advantages. Alberta Health Services **biosecurity restrictions** on large public gatherings have made having a live auction neither responsible or possible in 2021.
- There is no rush, you will have the opportunity to **bid on your selected lots for 34 hours.**
- Do chores, buy groceries, have a nap, but remember to check your bids to see if you are “out”.
- What is even better is that you will receive either a text message or email or both if you have been outbid.
- If you absolutely do not want to miss out on a particular lot, send in a **confidential proxy bid.** But be careful, you may get outbid! When the auction nears its end, remember to check your bid!
- Want to place a phone bid? Call either DLMS or our order buyer Merrill Dickie @ 403-559-8377
- See the attached “info sheet” on page 3 for more details.

Have questions? Please do not hesitate to call any of the contributors or DLMS

Parker Stock Farm

Glen cell 403-443-0401 Dr. Kathy cell 403-443-0064 parkerstockfarm@xplornet.com

DS Half Diamond Farm Dr. Ileana cell 403-505-6491 ileanawenger@gmail.com

DLMS Mark Shologan cell 780-699-5082 markshologan@gmail.com

Click to See | How to Use FarmGate Timed Auctions LINK PDF >>>>
(<https://cattlevids.ca/2020/pdf/FarmGatehowto.pdf>)

How to Participate in a FarmGate Timed Auction

After you are at the FarmGate Timed auction site click the LOGIN/REGISTRATION button.

First time FarmGate users:

- First time users will select the REGISTER button from this page. Fill out the registration form to signup for a free user account and it allows you to select a username and password for use on all Farm Gate Timed auctions. (please note due to some of the text notification features the FarmGate Time Auction Site requires a new account separate account from your DLMS Live sale site)
- After you create your FarmGate account you will receive a txt message with a pin code to verify your account.
- On your first log in to FarmGate Timed auctions we recommend you go to your profile and confirm your notifications are set to YES. This allows the site to send you text and/or email notifications when you are out bid and if there is activity on your favorite lots.

Returning FarmGate users:

- If you have used Farm Gate Timed auctions in the past simply enter your user name and password to continue. After you have logged in you are able to browse the timed auctions on DLMS FarmGate Timed Auctions.

How to Bid in a Timed Auction

Now that you are logged in and your account phone number / email is verified you are able to bid on an upcoming sale. Simply find the lot you are interested in bidding on. After you have found the lot there are 2 options for bidding on the lot.

- Place Next Bid – to place the next bid on the item, you see the amount in the first box, you simply click the "Place Bid" button and after you review the bid and agree to the terms and conditions your bid will be placed.
- Max Bid Amount – to place a max bid you put your max bid in the second box listed as "Max Bid" on the item, and then click the "Place Bid" button and after you review the bid and agree to the terms and conditions your bid will be placed as the next bid. With the Max Bid placed the computer will then keep you as the high bidder to the max amount you have placed. This can be a great feature if you are not able to give 100% attention to the sale close out and protect your interest so you do not miss out on any lots you want to purchase. The Max Bid amount is completely confidential from the seller during the sale process.
Example of How the Max Bid Works - If the lot has a \$2000 bid on it and you place a proxy bid of \$3500 into the system, the computer will bid \$2100 for you but if some one else bids \$2200, the computer will again bid for you, this time at \$2300. The system will look after your interest to a maximum of \$3500. If another bidder is on at \$3600, your proxy will no longer be effective and you will no longer have the winning bid on this lot without once again logging in and bidding again or moving your attention to a second lot of interest. Please note that in some cases a lot value can change very quickly if 2 max bids are placed on the same lot competing against each other.

***Timed Auction with extended bidding
begins at 9am June 11, 2021, extended bidding starts at 7pm June 12, 2021***
<https://farmgatetimedauctions.ca/home>

Watch List Feature

If you have items in multiple auctions or only a few from the same auction that you want to watch with out having to scroll through the entire list you can add the lots to your watchlist. On each lot you will see the "eye" button beside the bid button, by clicking this "watchlist" Icon that item is added to your personal watchlist for easy viewing of just your favorite lots in this sale or on the entire site.

Sale Ending / Closeout

Most FarmGate Timed Auction sales close racehorse style with extended bidding.

What is Racehorse Style Close?

Racehorse style sale close is when the entire sale stays open in extended bidding. This type of sale allows you as the bidder to change to a different lot within the same sale if the bidding has gone in to extended bidding.

How will Extended Bidding works?

When we get to the close out end time the clock for close extends with any bid placed with less than 5 min on the clock. This type of extended bidding turns the end time to more of a soft time. Extended bidding allows bidders to compete in lots like a real auction and give all bidders the same time to make a decision. Always follow the clock to see how much time remains in the sale you are interested in.

Bidding Close & Follow-up

After the clock has gone to "ENDED" and no bidding has occurred for 5 min the computer will declare the sale finished. Following the close typically within 24 hours of the sale close the sale consignor will contact all winning bidders to arrange payment, transfer of pedigrees and delivery/Pick up of your lot. Or as the winning bidding you can contact the sale consignor / sale manager to confirm payment instructions.

- Please make sure that your account info is up-to-date and correct if you are the winning bidder of a lot as this is how the billing is sent to Sale manager and/or Sale consignor.



Questions? Contact DLMS Farm Gate Timed Auctions
at 780-699-5082.

10707 108A Ave
Westlock, AB T7P1C5

***Timed Auction with extended bidding
begins at 9am June 11, 2021, extended bidding starts at 7pm June 12,2021***
<https://farmgatetimedauctions.ca/home>

Terms and Conditions

Health

Parker Stock Farm

- Vaccinations and Parasite Control: All of the sheep on offer have had their GlanVac 6 annual booster and spring deworming done . This follows their vaccination programming as a lamb and strategic parasite control strategy.
- All of the ewes and rams will have their Scrapie genotype available
- All of the sale ewes and rams will be confirmed OPP negative. The Parker flock is OPP negative, confirmed by 3 successive complete flock negative results (2015,2016, and 2017) and two randomized flock sampling (2018,2019).
- Our entire flock is Spider negative.

DS Half Diamond Farm

- Our flock is OPP test negative since 2005
- All consignments will be vaccinated twice with Glanvac 6
- Rams will have their Scrapie Genotype available
- We participate in the UCVM Parasite Study and sheep are dewormed based on fecal exams and clinical signs only.

Breeding Guarantee

- All of the rams will have successfully passed a Breeding Soundness Evaluation, for more information go to page 20-21.
- Should any animal fail to be a breeder, please notify the breeder as soon as possible to make a suitable settlement according to the CSBA Standard Recommended guidelines. Please refer to page 6 for details.

Registration Papers All sheep on offer are registered and all registration papers will be transferred to the buyer at the sellers expense. At the time of payment please advise us of how you would like your purchases transferred.

Liability All animals will be at the buyers risk as soon as sold. Sellers are not responsible for accidents or injury to animals after they are sold.

Insurance You are encouraged to insure your purchases, we will have the insurance forms and a veterinarian available to do the health exam. Insurance costs are the responsibility of the buyer.

Announcements Please refer to the online catalogue for up to date comments and information on all consignments

Timed Video Auction <https://farmgatetimedauctions.ca/home>

Proxy Bidding Please refer to page 3-4 for instructions on how to place a proxy bid (also referred to as max bid)

Phone Bids Merrell Dickie 403-559-8377 merrell.dickie@oldsnet.ca

Payment We will accept Visa, Mastercard , electronic fund transfer, cash or cheque. Credit card payments will be charged a transaction fee.

Delivery Successful buyers are responsible for animal pick up. Sellers will make every effort to assist in arranging shipment.

*Timed Video Auction
begins at 9am June 11, 2021 extended bidding starts at 7pm June 12,2021*

TERMS AND CONDITIONS

CSBA: Member Resources: Terms and Conditions for the Sale of Purebred Sheep

“All animals are guaranteed breeders if properly handled.

All **males** are guaranteed breeders. Should any ram fail to prove to be a breeder, any claim for adjustment must be made within 18 months of the date of sale. A satisfactory settlement shall be deemed to be replacement with another ram of equal value and health status or refund of purchase price.

The seller shall have the right, if so desired, to try a ram for as much as 75 days to determine whether he is a satisfactory breeder, before making final adjustment.

All **females** are guaranteed breeders. Should any female 12 months of age or older, not pregnant at the time of sale, fail to become pregnant during the current breeding season, the purchaser has the right to claim adjustment in writing to the seller within 12 months of the sale. Should any female younger than 12 months of age and not pregnant at the time of sale, fail to become pregnant during the current breeding season, the purchaser should notify the seller within 12 months from the date of sale, but wait to see if the ewe again fails to become pregnant by 24 months of age, before claiming adjustment in writing to the seller. Satisfactory settlement shall be deemed to be replacement with another ewe of equal value and health status or refund of purchase price.

The purchaser shall notify the seller as soon as any concern with an animal arises.

Exposed ewes of any age, even if marked prior to sale, are not guaranteed to be pregnant or produce living lambs.

Under no conditions will the seller be liable for more than the original purchase price of the animal.

The seller may direct the marketing of the animal and refund the difference between the purchase price and the market value as shown on the sales receipt.

No incidental expenses, such as feed, care, etc. will be charged by either party when making settlement.

All transportation charges are the responsibility of the buyer.

No settlement will be completed until the registration certificate is retired or endorsed and returned to the seller.

Any settlement of such guarantee is between the seller and buyer and is subject to the restrictions set out above. The Canadian Sheep Breeders' Association assumes no responsibility, expressed or implied, with respect to this guarantee or the restrictions set out above”.

Timed Video Auction
begins at 9am June 11, 2021, extended bidding starts at 7pm June 12, 2021
<https://farmgatetimedauctions.ca/home>



Welcome from Parker Stock Farm

Our goal at Parker Stock Farm is to produce ewes and rams that are **economically relevant** to Canadian sheep producers. Maternal ability, fertility, performance on feed and carcass quality are all traits that we deliberately select for. Genetic improvement does not happen overnight or by chance , **we manage what we can measure and GenOvis information makes this all possible.** Birth weight, 50 day weight, 100 day weight , are all taken into consideration during the selection process along with structural correctness and breed character. We are strong supporters of genetic selection and believe that it is the key to planned improvement in performance, whether it be the number of lambs born per ewe exposed, pounds of lamb weaned by each ewe at 50 days of age, average daily gain while on feed, or lamb weight at 100 days of age. Rams are selected for performance on feed, keeping in mind that ewe lambs may be retained for replacements, so their maternal influence matters, A LOT. Ewe lambs are selected first for maternal ability but need to also excel in the performance category. Balanced genetics is what we strive to produce, it is what we have to offer and it is what we keep for our replacements. GenOvis gives us the information that we need to make this kind of selection possible and successful. Thank you for considering what we have to offer to work with your breeding program.

All the best , *Glen and Kathy*



Timed Video Auction
begins at 9am June 11, 2021, extended bidding starts at 7pm June 12, 2021
<https://farmgatetimedauctions.ca/home>



Herd Sires

Mastine Tango 63F 754288 Purple tag sire group	RRAARR Twin	A grandson of Essie Ulysses who has very high EPD's in Britain. A very British style ram with lots of bone under him. We look to 63F to maintain the thickness and solid rear quarter that we look for in our sheep.
Parker KAP 1# 34E 741779 White tag sire group	RRAARR Twin	34E is an AI son of Owenhome 1E, one of the predominant Suffolk sires that shows in the pedigrees of many of the top end breeding ewes and rams in the breed. We picked the best son of 1E to add to the maternal strength of our flock.
Parker Samson 11D 729752 CARC 99 Red tag sire group	QRAARR Triplet	Son of the British ram , "Essie Samson". Daughters have beautiful udders. His offspring consistently show extra volume and muscle. These are the last 11D progeny to be offered.
Stonehill 3E 732141 Pink tag sire group	RRAARR Twin	Reserve Champion Suffolk ram at the 2017 Classic. He has a tremendous leg and bone along with a very square rump structure. Strong maternal qualities.

Each herd sire is selected to contribute particular traits to our flock. Our goal is to balance frame with capacity, and femininity with performance. Parker Stock Farm has participated on the GenOvis program since 2006, 15 years of deliberate genetic selection for disease resistance, carcass traits, maternal ability and lamb vigor are all presented to you in our sale offering.

Performance does not happen by accident, selection based on genetics is a deliberate process.

Timed Video Auction
begins at 9am June 11, 2021, extended bidding starts at 7pm June 12,2021
<https://farmgatetimedauctions.ca/home>



Measuring Parker performance against the National Flock over the last 15 years:

- Average live lambing percentage:
+28% MORE live lambs born per ewe per year
- Average weight of lamb raised to 50 days of age per ewe:
+ 45% HEAVIER.
That is an extra 47 pounds of lamb for every 100 pounds of lamb raised to weaning!
- Average 100 day weight of lambs:
+22 % HEAVIER.
- Average ADG of lambs from 50-100 Days of Age:
+25% MORE gain per day

Over the last 15 years the Parker flock has **CONSISTENTLY** produced **MORE** lambs at birth ,that are **HEAVIER** at weaning and **GAIN FASTER** than the national average, getting them to market faster and more efficiently.

Consistent, documented exceptional production from both the maternal and paternal sides.

Everybody does their part, very well!



Welcome From DS Half Diamond Farm

We have been raising sheep at DS Half Diamond Farm for over 25 years. This sale is bitter-sweet for us as this will be our last year in the purebred sheep industry. We have sold all of our purebred breeding ewes.. These yearling Charollais rams represent the last sheep from an amazing part of our farming lives. We truly appreciate, and sincerely thank all of our customers that have been our inspiration to breed high quality animals. Thankyou.

And a big thankyou goes to Megan and Kelly Kroes of KBar Ranches in Harris, Saskatchewan for buying our remaining purebred ewes of both Charollais and Romanov breed in 2020. We are confident that they will continue to provide high quality, healthy genetics.

What started as a way to mow the lawn, quickly turned into a purebred sheep operation raising Romanovs as a maternal breed and Charollais as a terminal sire breed. Mistakes we made early in the venture led us to becoming concerned about health status and performance data. Our flock has tested negative for OPP (Maedi-Visna) for over 15 years, and we have been members of Genovis since 2006. The majority of our new genetics have been introduced by AI. All mature animals that have died from an unknown cause, or were euthanized on the farm, have been tested for Scrapie since 2005 (119 animals) all with negative results.

We strive to produce healthy, correct, productive sheep that make our buyers a profit. Our Charollais are selected primarily on carcass traits and growth rates, and we utilize carcass ultrasound data to provide accurate genetic analysis. All ewes must be conformationally correct, good mothers, milk hard, and conceive within 2 cycles when exposed to the rams. Ewe lambs must be fertile and are expected to lamb at 12-14 months of age.

Rams presented for sale are selected on Genovis data, conformation and have passed a semen evaluation. They are also vaccinated with GlanVac 6 and have been Scrapie Genotyped.

It is an honour to be invited to participate in Glen and Kathy's sale as guest consignors and to provide you with the opportunity to purchase our rams. If you have any questions regarding any of the consignments do not hesitate to contact us.

Dr. Ileana cell 403-505- 6491 dshalfdiamond@gmail.com





Charollais Reference Herd Sires



Half Diamond 2736E.

This ram's lineage goes back to Crogham Centurion, one of the most consistent and long lasting performers in the Charollais breed. 2736E's dam goes back to Dalby Kracked It, a UK sire ram that has put length, muscle and growth into our flock. The majority of our ewes carry Kracked It genetics.



Lowerye Prancer.

We imported semen from Lowerye Prancer from the UK in 2016 for the purpose of adding width of gigot to our flock. He did not disappoint, as he has added great thickness to our sheep. Many of his daughters are proving to be top ewes in our flock.

***Timed Video Auction
begins at 9am June 11, 2021, extended bidding begins at 7pm
June 12, 2021***



Charollais Reference Herd Sires



Peleus is the most recent UK ram we have imported semen from. We selected him for high rates of gain. His offspring have given us some outstanding average daily gains and we are excited to see what his daughters will produce! Picture of Peleus in his working clothes in the UK.

Wedderburn Peleus.



Beefy Boy was a ram imported from the UK many years ago, that we went back to at AI for genetic diversity. His offspring are long, well balanced, correct, and carry high Genovis indices for carcass as well as maternal traits.

Northall ZYV2061

***Timed Video Auction
begins at 9am June 11, 2021, extended bidding begins at 7pm
June 12, 2021***



Scrapie Flock Certification

Why worry about scrapie ? Because you WILL care if there is ever a traceback and CFIA is deciding the fate of your sheep. Using a QR or RR genotyped ram will instill a level of scrapie resistance in your flock. Parker Stock Farm has been enrolled in the Scrapie Flock Certification Program since 2013 and has achieved CERTIFIED status. This means that you can purchase breeding stock from us and be confident that they are scrapie free. All sale animals are genotyped for your information

Participation in the Scrapie Flock Certification program is just one part of the biosecurity program in place at Parker Stock Farm.

For information on the Scrapie Flock Certification Program , go to <https://scrapiecanada.ca/sfcp/>

GenOvis



The performance based selection is all the result of recording data, and lots of it! A quick review of the maternal and carcass composite percentile calculations on pages 10-11 will give you an idea of how complete the indices are in identifying animals with balanced genetic capacity. Investing in animals with performance based selection makes gambling on the genetics of your next purchase less of a “shot in the dark”

If you want to use selection based genetics to improve your flock then GenOvis is for you! Gamble if you must but be aware that as a buyer you have the option.

In the catalogue all of the adjusted weights and EPD's are reported in pounds.

Replacement ewes are selected on their maternal traits, structural soundness, breed character and GenOvis information. Rams are selected for breed character, structural soundness, GenOvis carcass traits, and reproductive capacity.

A brief description of the performance traits mentioned in the catalogue is below:

- **50 day adjusted weight:** The 50 day weights are adjusted for age and sex of the lamb, age of dam, type of birth, and rearing (single, twin, etc). All actual weights of lambs are adjusted to a standard age of 50 days and are also adjusted to the equivalent of a ram lamb raised as a single from a mature ewe, four or five years of age. This adjustment means that adjusted weights on all lambs in the management group can be compared directly within the management group.
- **100 day adjusted weight:** The lambs weight is adjusted the same way that the 50 day weight is but for 100 days of age.
- **Average daily gain:** This is the real gain from 50-100 days of age for rams, female ADG is adjusted by a small factor to compare with the ADG of the males.
- **Expected Progeny Difference (EPD) for 50 day weight direct:** The 50 day weight direct value is a measure of the lambs ability to grow from 0-50 days of age on its own genetic merit. The EPD value is an estimation of the lambs ability to pass on improved gain to its progeny.
- **Expected Progeny Difference (EPD) for 100 day weight direct:** The 100 day weight direct value is a measure of the lambs ability to grow from 50-100 days of age and the total weight at 100 days. The EPD value is a measure of the lambs ability to pass on improved gain to its progeny.
- **CARC Index:** This index has been developed to be the most complete index for the selection of terminal sire rams. Consideration is given to lamb survival, 50 day weight, loin eye depth, birth weight, gain, and fat cover in the calculation of the CARC value. The index is expressed as a percentile which means that if a ram has a CARC value of 98, then he is in the top 2% of the breed for that index or trait.

Timed Video Auction
begins at 9am June 11, 2021, extended bidding starts at 7pm June 12, 2021
<https://farmgatetimedauctions.ca/home>

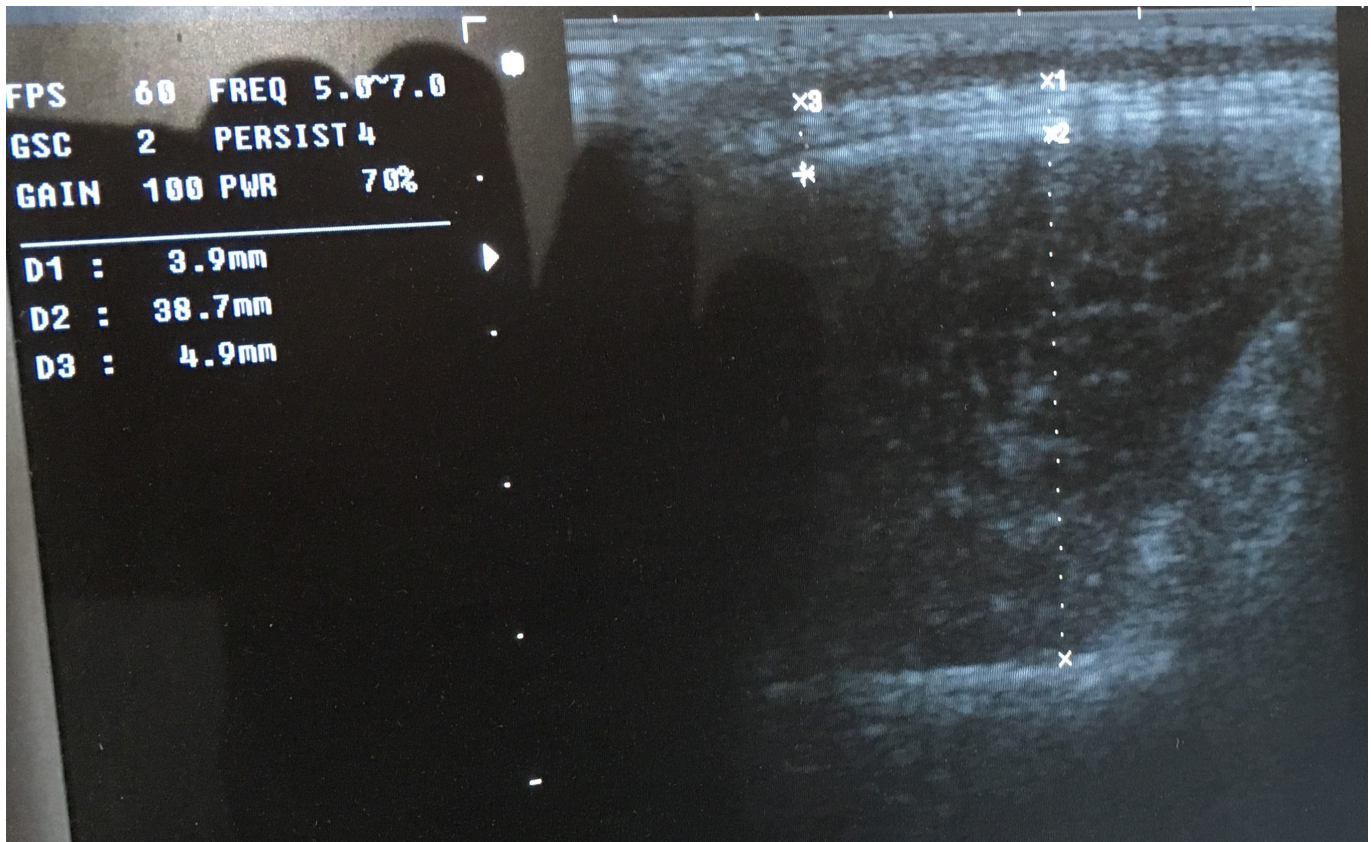
GenOvis

Gain Index: Used to improve a lambs growth rate

MAT-U Index: Reported for the terminal breed ewes on offer, this index is used to select for maternal as well as carcass traits. This is an index that you can trust but do not underestimate the importance of management in maternal performance.

For more detailed information on the GenOvis program go to;

<https://genovis.ca/wp-content/uploads/2019/12/Strategies-for-Genetic-Progress-A-Practical-Guide.pdf>



GenOvis

Understanding the importance of the Percentile rank

THE PERCENTILE... AN ESSENTIAL PART OF SELECTION

The percentile ranks the animal within its population according to its EPD values. At a glance, you will know if the animal is improver or not for the breed.

<50%: below the average / 50%: breed average /
>50%: improver

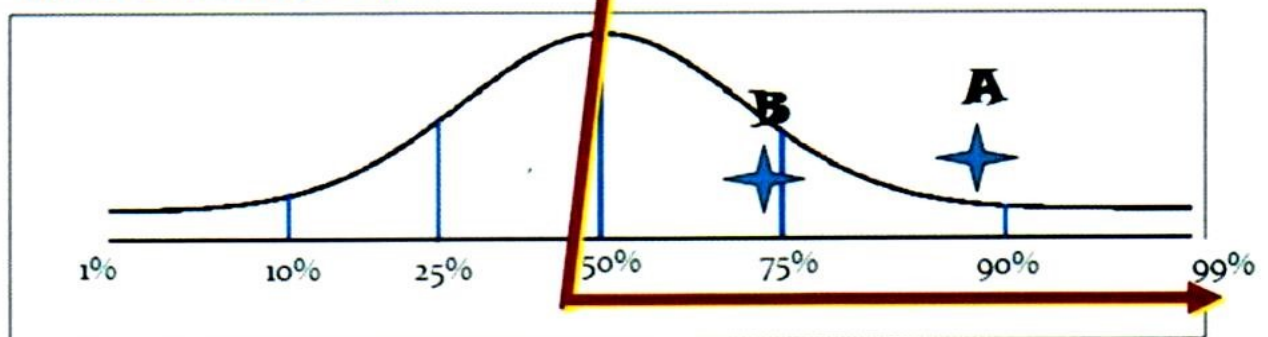
Percentile

Percentile allows classifying the animal according to its position within the breed (1 to 99%)

Ram A : EPD 50 days = 87%

Ram B : EPD 50 days = 70%

A and B =
2 good rams > 50%

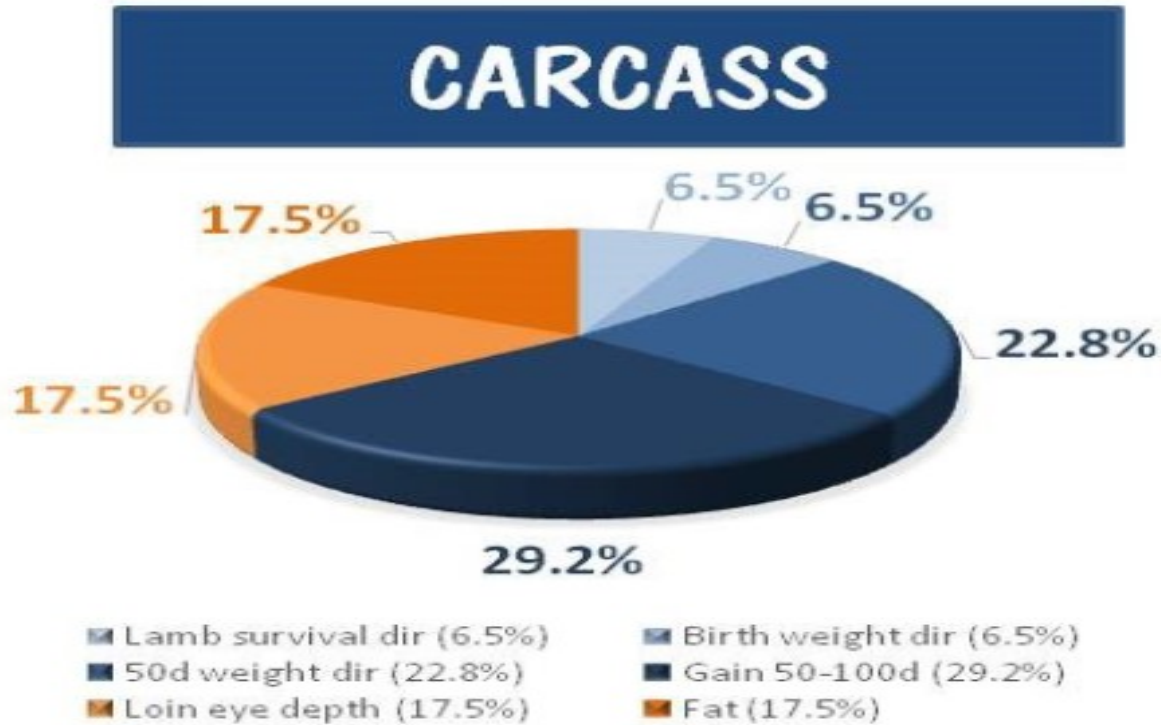


- ✓ Purebred flock looks for the best "top" EPD!
- ✓ Commercial flock, to produce market lambs,
a ram above the 50th percentile is considered to be improver for his breed.

From "Strategies for Genetic Progress: A Practical Guide
Written by: GenOvis

GenOvis CARC Index and Percentile

To improve lambs' growth rate and carcass quality



The **CARCASS Index (CARC)** has been developed as a tool to be used in the selection of rams whose progeny will have improved growth and carcass qualities. It is **THE MOST COMPLETE** index for the purchase of terminal rams to produce market lambs. The chart above outlines what factors are included in the CARC index.

The farther *backward* you can look.....

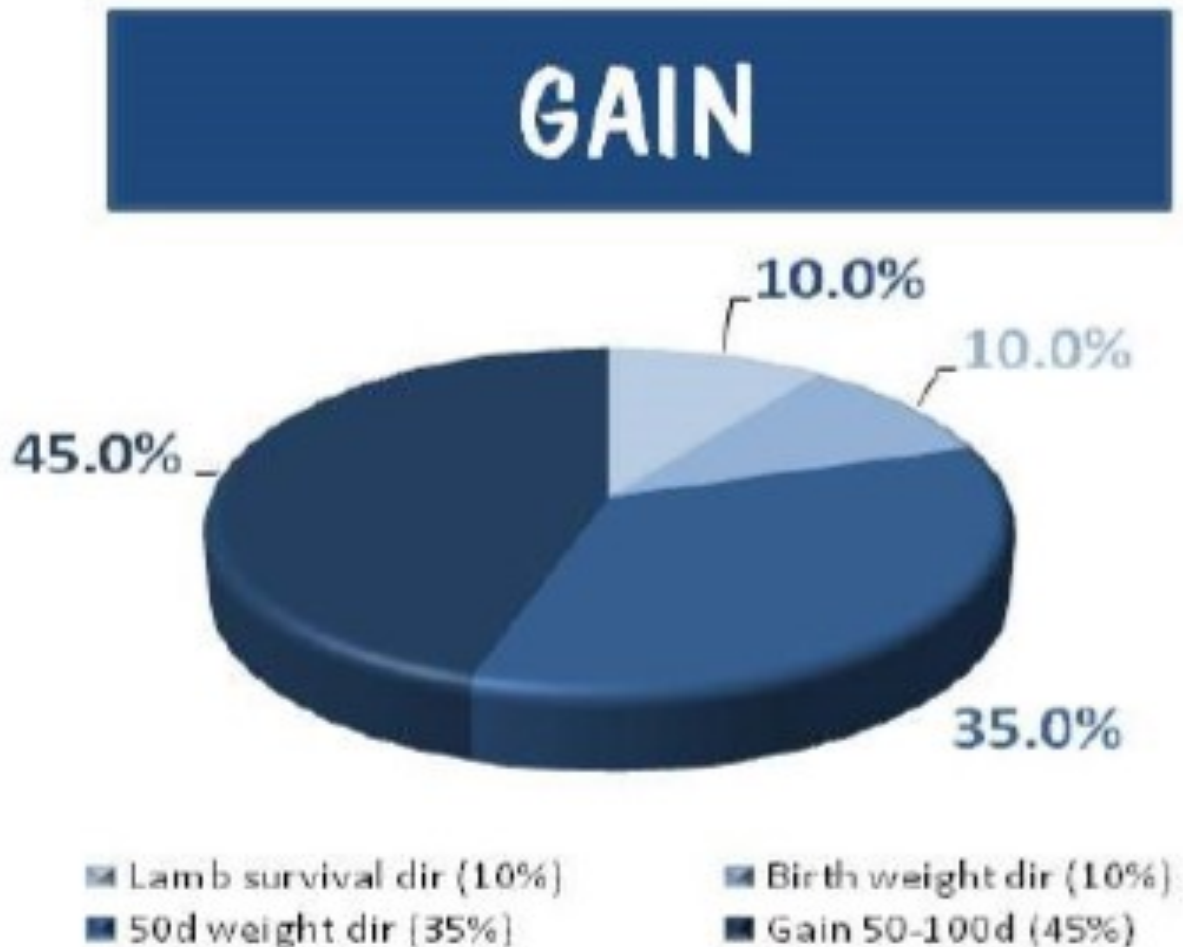
The farther *forward* you can see!

Winston Churchill

Genetic selection makes planning possible

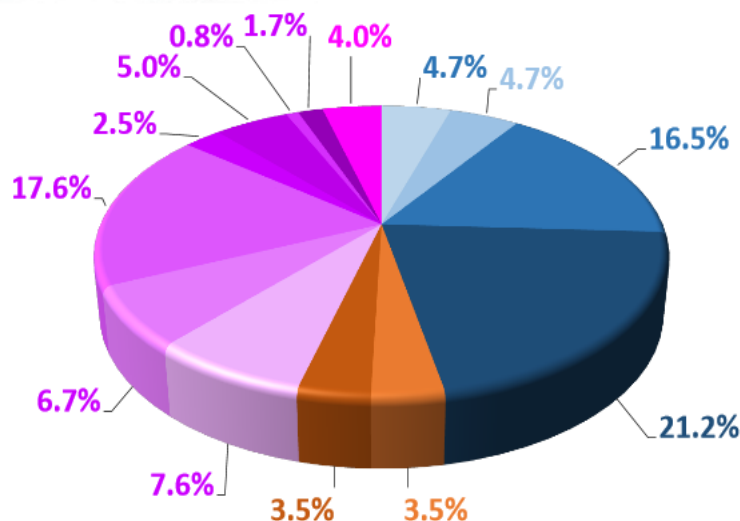
GenOvis Gain Index and Percentile

To improve lambs' growth rate.



The GAIN index has been developed to estimate growth potential without the use of carcass ultrasound information.

The EPDs that makeup of each index: MATERNAL ULTRASOUND (MAT-U)



Genetic Gain Expected

50d weight dir (kg)	1.40
Gain (kg)	2.18
Loin eye depth (mm)	0.86
Fat (mm)	0.16
50d weight mat (kg)	0.97
Age 1 st lambing (days)	1.00
# Born later (#/litter)	0.01
Tot. weight weaned later (kg/litter)	1.16

Subindexes

47 % growth

7 % carcass

42 % reproduction

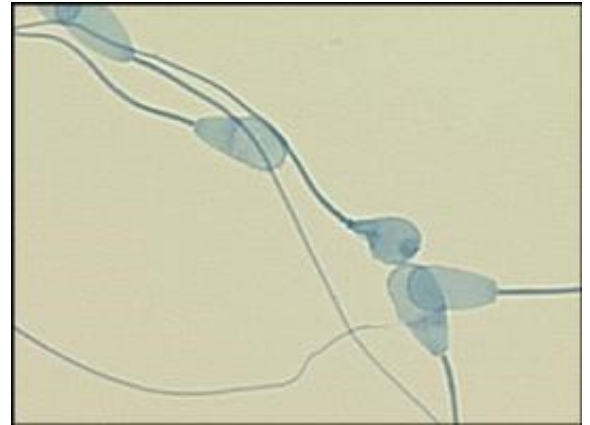
4 % lambing interval

For Suffolk ewes with ultrasound carcass data, use the MAT-U index to select for ewes to increase maternal and carcass traits.

What is an EPD?

Expected Progeny Differences (EPDs) are genetic predictions that producers can use when making selection decisions. A buyer is always advised to use more than just the EPDs regardless of accuracy when making purchase decisions. EPDs come from performance data. We submit data to CEPOQ who administers the GenOvis database. The differences between animals raised in the same environment is analyzed and the portion of that difference that is due to genetics (heritability) is determined. The genetic differences are then compared using the pedigree information contained in the Canadian Livestock Records (CLRC). The result is a value that can be directly compared between animals and across environments, this is the **power of an EPD in genetic improvement**.

Breeding Soundness Examinations of Rams



For optimal flock productivity, producers should select rams that have the ability to settle a large percentage of exposed females early in the breeding season and sire lambs with the genetic potential for rapid, efficient growth. Performing a breeding soundness evaluation helps to identify rams that are either capable or not capable of settling ewes. Up to 10-15 percent of rams are of unsatisfactory breeding quality.

The breeding soundness evaluation will include a physical evaluation, assessment of the reproductive organs, and semen collection and evaluation of the sperm. Recent disease exposure of the ram may temporarily render him infertile for up to 60 days. Any ram over 6 months of age is eligible for a breeding soundness evaluation.

Structural soundness is critical to performance in the breeding pasture. Teeth, feet and legs, ability to maintain body condition, and eye conformation may all affect the rams ability to locate ewes in heat.

Scrotal circumference is strongly related to the semen production capacity of the ram. Rams with larger scrotal circumference produce more semen of greater viability. Female progeny from rams with larger scrotal circumference reach puberty earlier than females from males with smaller scrotal circumference. Also, it has been well documented that daughters from rams with larger scrotal circumference will have a higher occurrence of multiple births and ovulate for more years than females from rams with smaller scrotal circumference. Scrotal circumference can vary by season and with body condition. Scrotal circumference may increase by up to 4 cm between the off season and the fall breeding season in breeds that are strongly driven by photoperiod.

Rams are classified as either excellent, satisfactory or questionable. Rams classified as questionable should be rechecked in 4-8 weeks.

By using rams that are of satisfactory fertility, producers can expect a shorter lambing season, and fewer open ewes that will result in a higher lambing percentage of ewes that are exposed.

Reference: Purdue University AS-599-W

Ram Breeding Soundness Evaluation Report

Owner _____
 Address _____
 PID _____
 Telephone _____

Identification: Name _____
☐ Ear Tag _____ CSIP _____
☐ Tattoo _____
 Breed _____
 Birth Date _____ Age ☐ 8-14 mo.
☐ 14-16 mo.
☐ >16 mo.

I. Sex Drive and Mating Ability

The onus is on the producer to evaluate this critical aspect of ram fertility. Evaluation of libido, the rams sex drive and breeding behavior, is beyond the scope of this evaluation procedure

II. Physical Soundness Items that are checked off are normal unless otherwise indicated:

Eyes Teeth Feet Legs Penis Prepuce Scrotum Scrotal Shape Testicles Epididymides

Body Condition ☐ Very Thin ☐ Thin ☐ Average ☐ Fat ☐ Very Fat

Scrotal Circumference _____ cm ☐ Excellent ☐ Satisfactory ☐ Questionable
 Ram lambs (<14 mo of age) >33cm > 30 cm <30 cm
 Ram lambs (14-16 mo of age) >34cm > 31 cm <31 cm
 Mature rams (>16 mo of age) >35cm >33 cm <33 cm

III. Semen Quality

Collection method: ☐ electro-ejaculation ☐ Other

Penile protrusion ☐ Yes ☐ No

Gross Motility ☐ Excellent >50% ☐ Satisfactory >30% ☐ Questionable <30%

Morphology Classification of defects	%	Within Acceptable limits	Not Within Acceptable limits
Head			
Midpiece			
Principal Piece			
Detached normal heads			
Detached abnormal heads			
Proximal droplets			
Acrosome			
White blood cells			
Normal			

Excellent > 90% normal, no white blood cells

Satisfactory > 70% normal no white blood cells

Questionable < 70% normal, may have white blood cells

Classification: The results of this examination shall in no way be used as a legal document certifying or condemning the fertility of the ram presented for evaluation. Rather, it is an evaluation guide to utilize the knowledge we currently have to discourage the use of potentially inefficient rams. On this date, to the best of my knowledge, the results of this examination indicate that the potential breeding capacity of this ram is

Satisfactory Unsatisfactory Decision Deferred Cull

Recommended date for re-evaluation if classified as either unsatisfactory or decision deferred _____

- Re-evaluate 30 days before breeding season is to start this year
- Re-evaluate each year before breeding season is to start

Comment _____

Veterinarian performing evaluation

Date evaluation performed _____
 Signature of veterinarian

Evaluation form used for Parker Stock Farm and
 DS Half Diamond Rams

Maedi-Visna (aka Ovine Progressive Pneumonia)

Maedi-Visna (MV) also known as Ovine Progressive Pneumonia (OPP), is one of the major production limiting diseases facing the Canadian sheep industry. Because of the long incubation period of the virus, lambs infected early in life remain in the flock until clinical signs develop, most commonly after 4 years of age . OPP is the “silent thief”. The only way to manage the risk is to source replacement breeding stock from OPP negative flocks. **Being OPP negative means that you deliberately are testing your flock for the disease.** The only way to be sure is to test. Parker Stock Farm and DS Half Diamond Farm have invested and are confident that they are OPP negative.

You can buy with confidence that your purchase is OPP negative and we have the lab work to prove it!

BUY WITH CONFIDENCE!



- **GenOvis performance testing**
 - Without GenOvis, a weight is just a number
 - Performance within a breed needs to be understood and selected for
- **Breeding Soundness evaluations on rams**
 - Leading the industry by offering rams that have a satisfactory semen test.
 - Selecting for rams that will produce reproductively high performing daughters
- **Being a “high health flock” means more than just being a closed flock**
 - Health status is backed up by lab testing
 - Documented vaccination and parasite control strategies
 - High flock performance does not happen without high flock health

***Timed Video Auction
begins at 9am June 11, 2021,
Extended bidding starts at 7pm June 12, 2021
<https://farmgatetimedauctions.ca/home>***