

# LIVE2LEAD

Ft. Lauderdale 2026

*Leading Change*



## SPONSORSHIP PACKAGE

[www.live2leadfl.com](http://www.live2leadfl.com)

The Alan B. Levan | NSU Broward Center of Innovation  
3100 Ray Ferrero Jr. Blvd,  
Fort Lauderdale, FL 33314

**OCT 28, 2026**

Presented by

Transformation  
Through  
Conversations



Official LIVE2LEAD License Holder

**LIVE2LEAD**  
Ft. Lauderdale

Platinum

# SPONSORSHIP LEVEL

## ALAN B. LEVAN NSU BROWARD CENTER OF INNOVATION



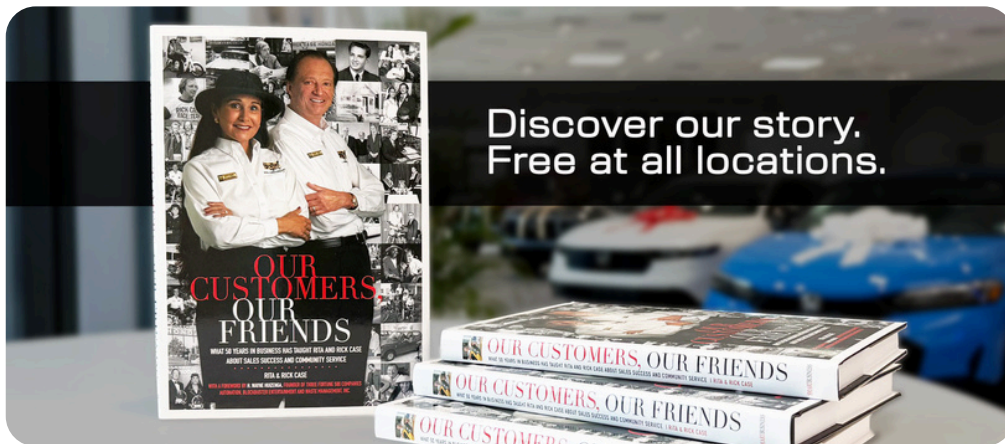
# Food and Youth Programming

## SPONSORSHIP PARTNERS



Bronze

# SPONSORSHIP LEVEL



# Friends of LIVE2LEAD

# RJFF



Growing Entrepreneurs

**LIVE2LEAD**  
Ft. Lauderdale

Core

# SPONSORSHIP LEVELS

## GOLD



- 12 Tickets included
- VIP section
- Recognition from the Stage
- Logo on all materials
- Book for each participant
- Half day customized leadership development experience for up to 20 people
- 1/2-page ad in program booklet

**(2 available)**

**\$7000**

## SILVER



- 8 Tickets included
- VIP section
- Recognition from the Stage
- Logo on all materials
- Book for each participant
- Two-hour customized leadership development experience for up to 10 people
- 1/4-page ad in program booklet

**(4 available)**

**\$5000**

## BRONZE



- 4 Tickets included
- VIP section
- Recognition from the Stage
- Logo on all materials
- Book for each participant
- Two-hour virtual leadership development experience for up to 10 people

**(Unlimited)**

**\$2500**

# Panel

## SPONSORSHIP PACKAGE



- 8 Tickets included
- VIP section
- Organization/company representative to make remarks from the stage (with the option to moderate the interaction)
- Book for each participant
- Two hour customized leadership development experience for up to 10 people,
- 1/2 page ad in program booklet.

**(1 available)**

**\$6000**



### Panel Subject:

#### **Change Is Personal First**

Insights on how a leader must grow and change personally in order to achieve larger organizational change.

# Supporting

## SPONSORSHIP LEVELS

### TABLE SPONSOR



- 8 Ticket included
- Host your Clients and Leaders
- Recognition from the Stage
- Logo displayed at table & in materials

**(4 Available)**

**\$3000**

### VENDOR TABLE



- Promote your business at LIVE2LEAD Fort Lauderdale
- Recognition from the Stage
- Logo on all materials

**(4 Available)**

**\$2000**

Register at [www.live2leadfl.com](http://www.live2leadfl.com)

# Supporting

## SPONSORSHIP LEVELS

### FRIEND OF LIVE2LEAD



- 1 Ticket included
- VIP Section
- Recognition from the Stage
- Logo on all materials
- Book for each participant

**(9 Available)**

**\$500**

### SPONSOR A STUDENT



- Sponsor a High School student to attend the Youth Career Track at LIVE2LEAD Fort Lauderdale
  - Programming
  - Leadership Growth Box materials
  - Recognition and Logo on all materials
- (68 Available)**

**\$99**

Register at [www.live2leadfl.com](http://www.live2leadfl.com)

## WE GROW YOUR LEADERS THEY GROW YOUR *Business!*

Don't just train your team.

**Transform your leadership culture.**

Transformation Through Conversations is the catalyst for results-driven leadership development. We partner with organizations worldwide to expand capacity, ignite engagement, and build a high-performing leadership pipeline—tailored to your unique challenges and goals.

📍 Based in Pompano Beach, FL

[www.transformationthroughconversations.com](http://www.transformationthroughconversations.com)



by **ANA  
SASMIRESAN**

## Service Highlights



### The Mission

Our mission is to raise the caliber of leadership and cultivate intentional stewardship—driving extraordinary results through people-first transformation.



### The Approach

With deep expertise in leadership development, our team partners with you to create tailored programs that align with your business objectives and close critical performance gaps.



### The Services

Leadership development, strategic succession planning, custom program design, executive and leadership coaching, immersive retreats, and transformative summits.



### The Impact

Strong leadership isn't optional—it's the engine of performance. Our programs expand leadership capacity, sharpen strategic vision, build high-performance teams, and drive sustainable growth.



## Why Hire Us?

When direction is unclear, communication falters, change stalls, and leadership potential goes untapped—***your business pays the price.*** Don't wait for alignment to happen. Create it.

- ✓ Build Trust & Buy-In
- ✓ Grow Effective Leaders
- ✓ Align Values & Vision
- ✓ Drive Culture Change

Request a consultation

*Today!*



[ana@anasasmiresan.com](mailto:ana@anasasmiresan.com)