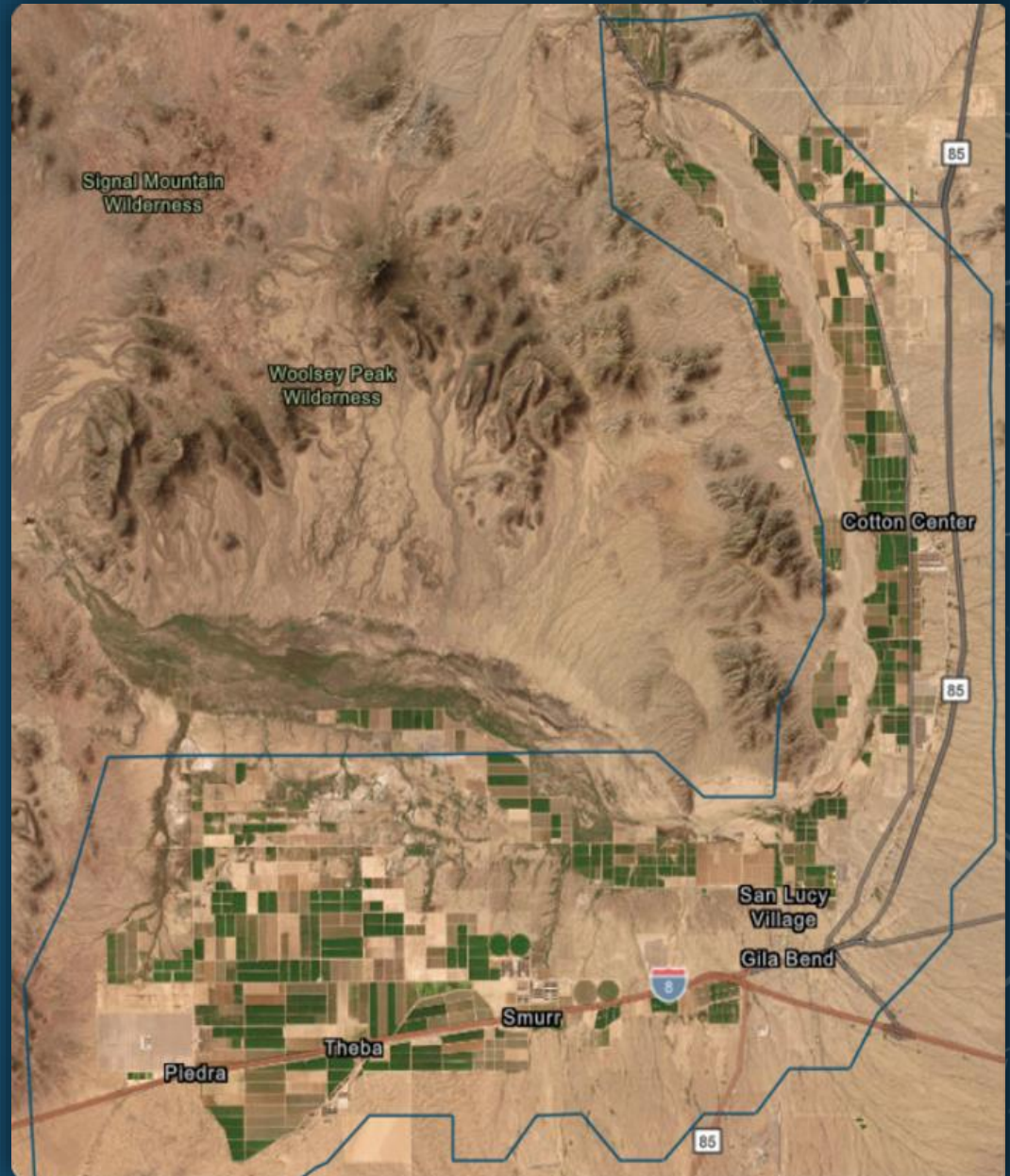


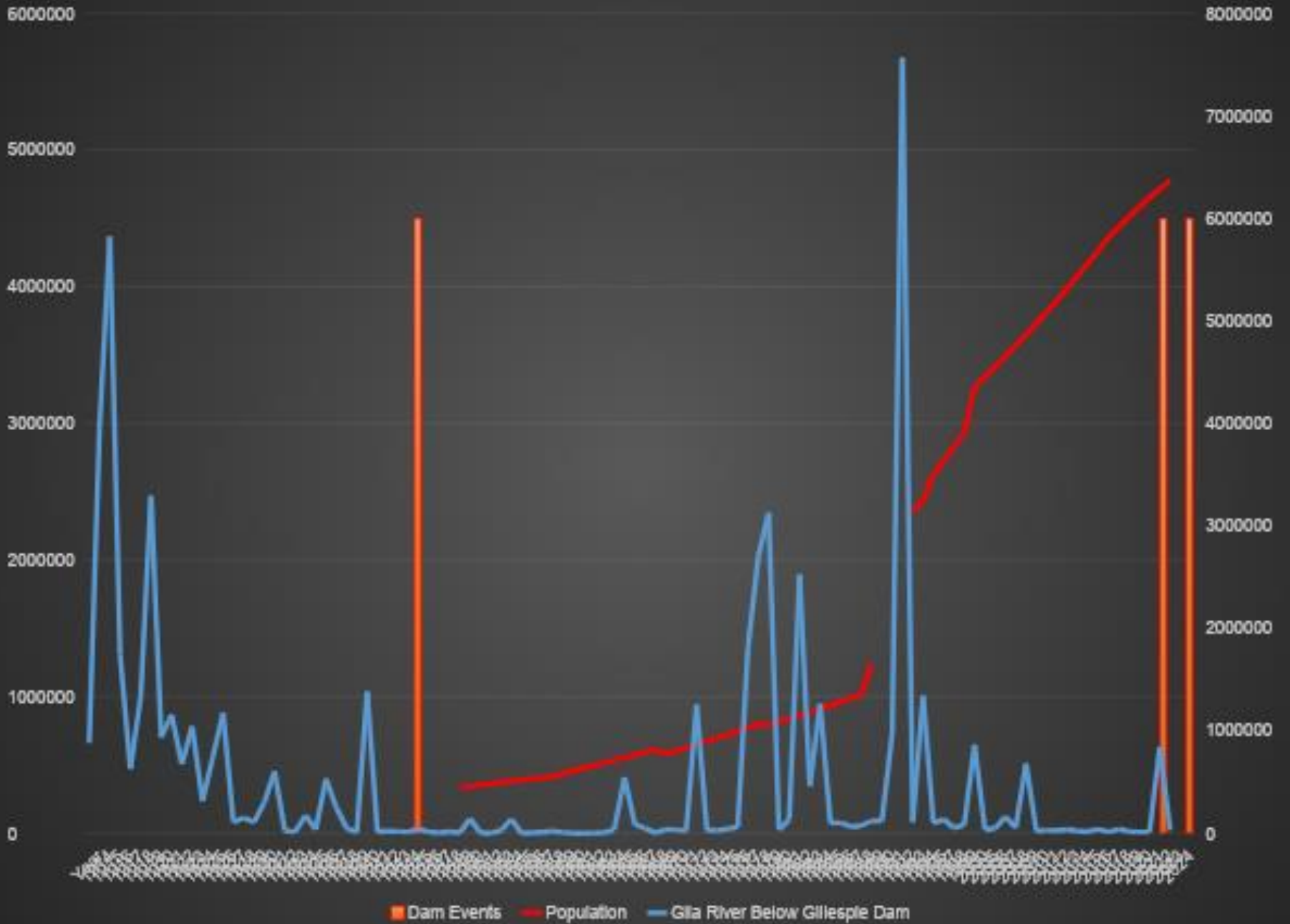
Gila Bend Basin

Facing Water Challenges:
The Cooperative Path of Paloma Irrigation District

Water Issues in Gila Bend

- Prolonged drought
- Less tailwater, less effluent, less flood releases, Less recharge
- Gila Bend is downstream
- Larger dams and cities with more demand upstream
- Reuse of 'waste' water







Water Issues in Gila Bend

- Gila Bend has seen very little growth or even reduced usage
- Yet a declining water table
- Public's flawed negative perception of Storm Water
- Natural aquifer recharge by running water
- Gila Bend Basin has a huge capacity to recharge

10000000

1000000

100000

10000

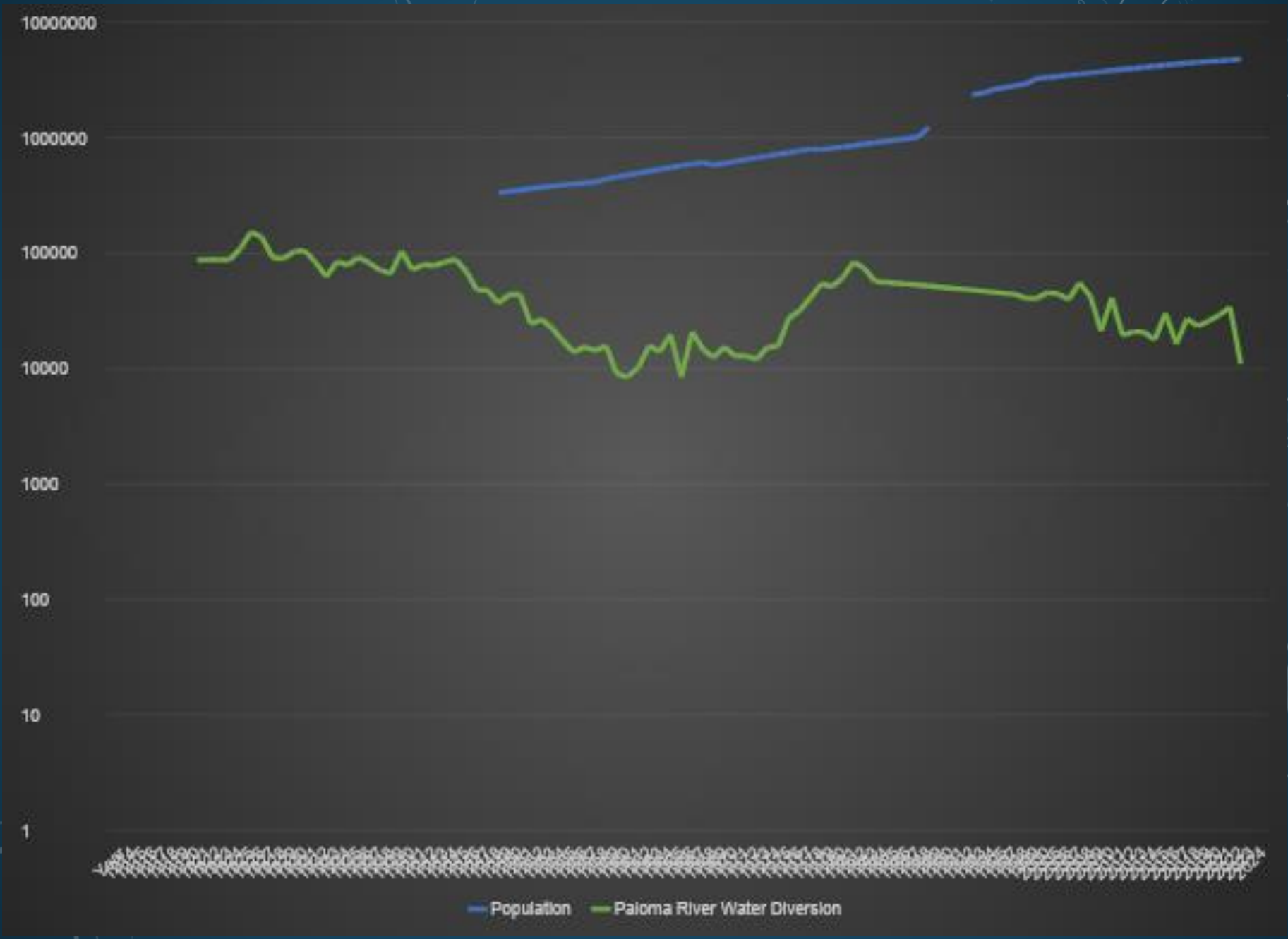
1000

100

10

1

Population Paloma River Water Diversion



6000000

5000000

4000000

3000000

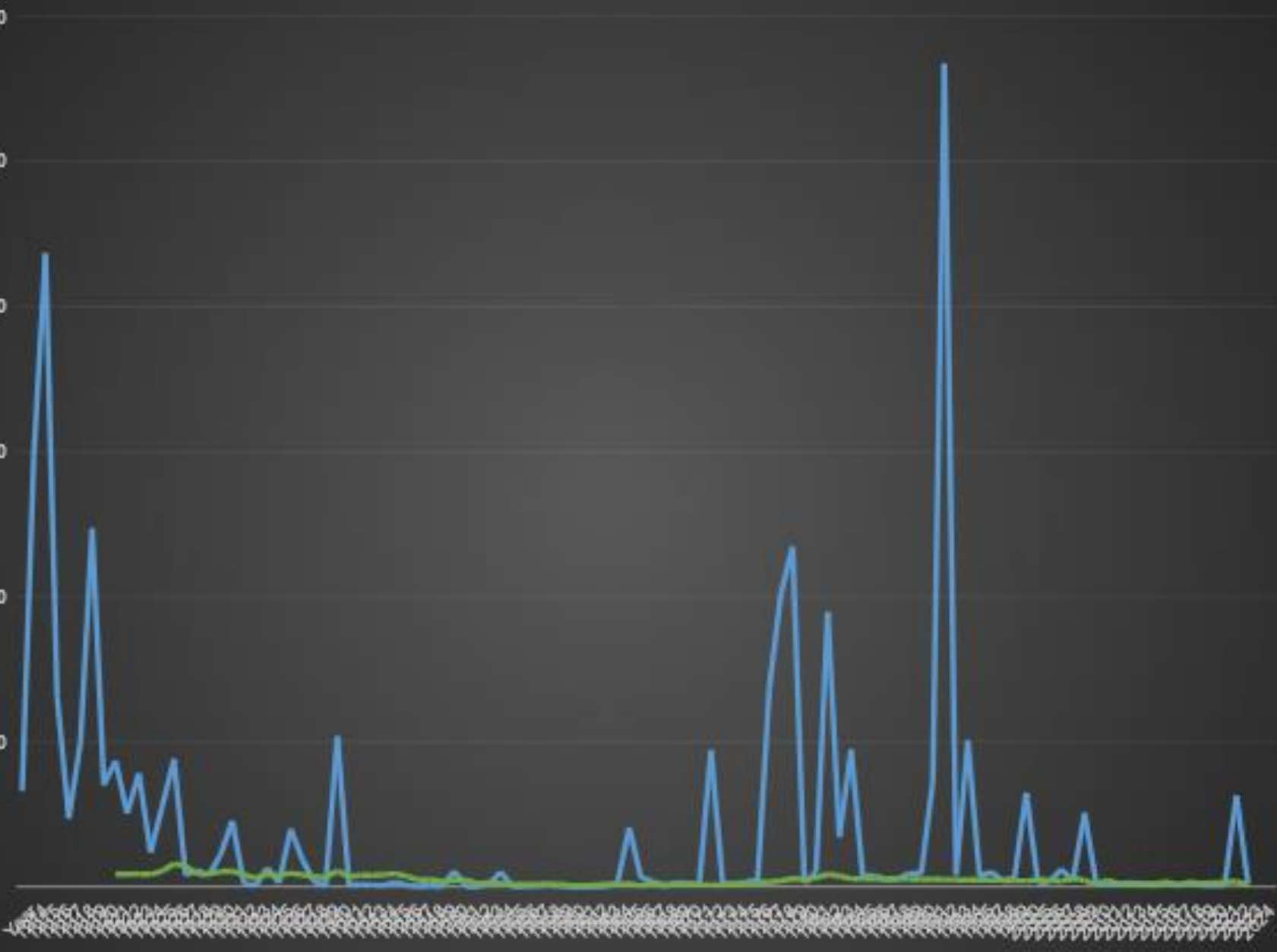
2000000

1000000

0

1/1/1961 1/1/1962 1/1/1963 1/1/1964 1/1/1965 1/1/1966 1/1/1967 1/1/1968 1/1/1969 1/1/1970 1/1/1971 1/1/1972 1/1/1973 1/1/1974 1/1/1975 1/1/1976 1/1/1977 1/1/1978 1/1/1979 1/1/1980 1/1/1981 1/1/1982 1/1/1983 1/1/1984 1/1/1985 1/1/1986 1/1/1987 1/1/1988 1/1/1989 1/1/1990 1/1/1991 1/1/1992 1/1/1993 1/1/1994 1/1/1995 1/1/1996 1/1/1997 1/1/1998 1/1/1999 1/1/2000 1/1/2001 1/1/2002 1/1/2003 1/1/2004 1/1/2005 1/1/2006 1/1/2007 1/1/2008 1/1/2009 1/1/2010 1/1/2011 1/1/2012 1/1/2013 1/1/2014 1/1/2015 1/1/2016 1/1/2017 1/1/2018 1/1/2019 1/1/2020 1/1/2021 1/1/2022 1/1/2023 1/1/2024 1/1/2025

— Gila River Below Gillespie Dam — Paloma River Water Diversion



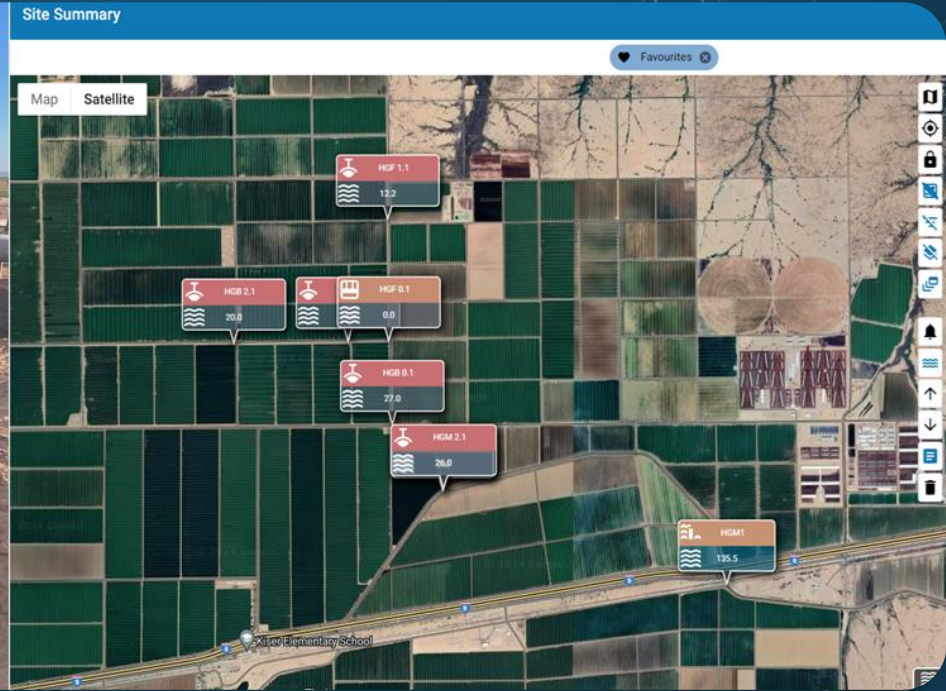
Ongoing Work and Legislation

Actively working with legislators for groundwater management regulations

SB1221



Efficiency and Modernization



Efficiency and Modernization

6:04

PIDD 2018-3
203254

Pump ON

Pump OFF

Pump Status ON

Switch Monitors

- Starter Fault Alarm OFF
- Low Oil Alarm OFF

Sensor

- Current - Current 16.89 mA
- Current - Scaled Input 322.2 Amp

No Commands

Overview Device More

6:04

Overview

List Map All Devices

Search

PIDD 81-1

Pump Start	Pump OFF
Pump Status	Starter Fault Alarm
Low Oil Alarm	

Today - 5:36 PM | Crop Link Pro

PIDD 2

Pump ON	Pump OFF
Pump Status	Starter Fault Alarm
Low Oil Alarm	

Today - 5:58 PM | Crop Link Pro

PIDD 2018-3

Pump ON	Pump OFF
Pump Status	Starter Fault Alarm
Low Oil Alarm	16.89 mA

322.2 Amp

Today - 5:50 PM | Crop Link Pro

PIDD 4

Pump ON	Pump OFF
Pump Status	Starter Fault Alarm
Low Oil Alarm	

Today - 5:43 PM | Crop Link Pro

Overview Device More

Efficiency and Modernization

Drip Doser & Drip Master



Efficiency and Modernization



Efficiency and Modernization



Gila Bend Basin

- Long severe drought and groundwater challenges
- Water conservation and regulatory collaboration
- Recharge problem due to increased upstream dams
- Challenges as a Small District and Large Upstream needs

