

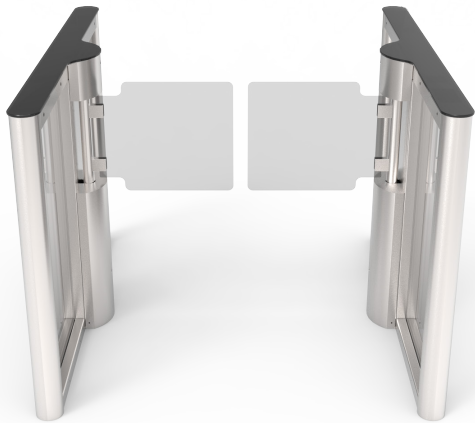
**Expert Advice. Great Value. Contact Us Today!**

**Call:** 203-647-9147 **Email:** sales@haywardts.com

**Website:** www.haywardts.com

**EZ Lane SG Low Swing Glass  
Enhanced Barrier Security**

**Mid-Range Optical • Low Swing Glass Barrier • Bi-Directional  
Tailgate Detection • Crawl Detection • Full Alerts • Simple Programming**



**EZ Lane SG Low Swing Glass**  
(30" Standard or 36" ADA opening)

**Applications:**

Optical turnstiles consist of two pedestals that utilize photo electric beams which create a sensing field to monitor the passage of objects. Depending upon the level of security clearance required, they can be used with/without staff and are part of an integrated access control system. Optical turnstiles with barriers are typically used in higher security environments, and are available in a wide variety of styles.

Glass barrier options are available with differing sizes and styles - ranging from standard to maximum security barriers. Lane widths can vary to accommodate ADA compliance.

The EZ Lane SG is our premium model in the swing glass series and offers cabinets with square or rounded ends. The glass is available in a variety of heights - depending upon your security needs. The glass swing is bi-directional permitting immediate passage from both directions. They are designed to prevent tailgating and can be configured for ADA compliance.

**Simple Set Up**

Each SG Optical lane is equipped with an internal display and a multi-function selector knob that allows for easy configuration of Optical Turnstile functions and operating modes.



*Internal Display and Function Control Knob*

**Narrow Profile Cabinets with Architectural  
Choices to Match any Decor**

Cabinet styles available in either square or round ends to enhance the aesthetic appeal of any location. Swinging glass panels and fixed side panels can be configured with your choice of clear or color tinted glazing. Choose optional logo etching for the ultimate in personalization.



*SG-2 Square End Cabinet*



*SG-3 Round End Cabinet*

**About Hayward Turnstiles:**

Hayward Turnstiles has over 50 years of expertise in quality manufacturing of precision aircraft parts and reliable turnstiles.

Our factory, in Milford, CT, is AS9100 Certified to aerospace standards, resulting in superior turnstiles. Engineered to industrial grade specifications, they are durable and built tough for long lasting performance. Proudly made in the USA, we distribute worldwide with installations across the globe.

Get in touch with us for expert advice, design assistance, project review, free quotes, and for help with your access control needs.

**Applications:**

The EZ Lane SG Swing Glass is our premium model in the swing glass series and offers an enhanced level of security. The glass is available in a variety of heights depending upon your security needs.

**STANDARD FEATURES**

Quick and smooth motorized swing glass for bi-directional operation and fast passage.

**Optical Detection:**

LED's linked to 32-bit CPU.

**Throughput/Capacity:**

Up to 50 passages per minute for fast user throughput

**Card Stacking:**

- Lane remains open while authorizing multiple credentials
- Increases throughput during busy periods
- Allows simultaneous transactions

**Alerts (Visible LED & Audible):**

- Access Allowed: Green arrow and confirmation tone
- Access Declined: Red X and rejection tones (3 types)

**Tailgate Detection:**

- Assures that only one person enters for each authorized credential
- Prevents "Piggybacking" by unauthorized persons

**Crawl Under Detection:**

Optical LED's detect all movement 8" above the floor

**Reader Integration:**

- Easily integrates to access control and fire safety systems through dry contact
- Reader mounts internally in cabinet under lane status LED
- Factory installation available - End user supplied reader

**Power Failure/Emergency Mode:**

- Barrier easily pushes open at power failure/emergency
- Barrier auto-resets when power is restored

**Power Supply:**

24 VDC - Maximum power consumption 90-180 W

**Cabinet Style:**

Stainless steel w/square or round ends and tempered glass top

**Glass Color Choices (swinging panels and sidewalls)**

Choice of Glass Colors in clear, dark gray, blue or bronze tint

**Quality Control:**

Every unit is inspected, tested, and certified before shipment.

**OPTIONS**

**Lane Mounting Platform** (for above floor wiring):

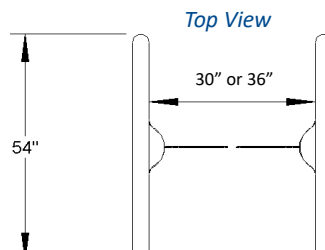
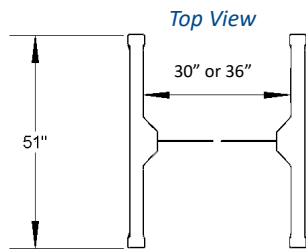
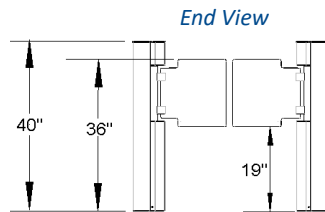
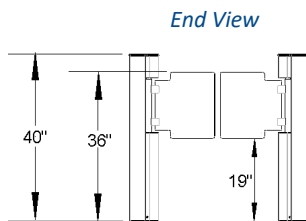
- Cabinet is mounted on pedestal base to conceal wiring
- Walk over conduit for quick installation (no-drilling)

**Glass Panel Etching Options**

Personalization of Glass Panels by etching (e.g. Company Logo)

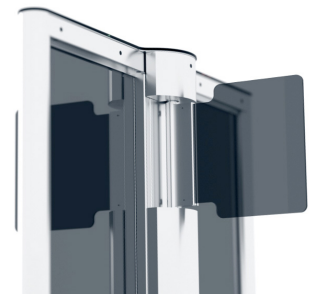
**Remote Lane Controller**

- Remotely control and change your Optical Turnstile parameters
- Perform diagnostic checks, analyze alarms, display patron counts



*SG-2 Low Glass Optical Turnstile  
Standard Dimensions (single lane)*

*SG-3 Low Glass Optical Turnstile  
Standard Dimensions (single lane)*



**Expert Advice. Great Value. Contact Us Today!**

**Call:** 203-647-9147 **Email:** sales@haywardts.com

**Website:** www.haywardts.com

**EZ Lane GT Low Glass  
Retractable Glass Panels  
Maximum Barrier Security**

**Mid-Range Optical • Enhanced Security • Retracting Glass Barrier • Bi-Directional  
Tailgate Detection • Crawl Detection • Full Alerts • Simple Programming**



**EZ Lane GT Low Glass (22", 34" or 38" ADA opening)**

**Applications:**

Optical turnstiles consist of two pedestals that utilize photo electric beams which create a sensing field to monitor the passage of objects. Depending upon the level of security clearance required, they can be used with/without staff and are part of an integrated access control system. Optical turnstiles with barriers are typically used in higher security environments, and are available in a wide variety of styles.

Glass barrier options are available with differing sizes and styles - ranging from standard to maximum security barriers. Lane widths can vary to accommodate ADA compliance.

The EZ Lane GT Low Glass is our premium retractable glass model and offers maximum security. Glass panels meet at the center when closed. The advanced design fully retracts the glass into the cabinet for a concealed look. Retractable glass models require wider cabinets to accommodate their complex design and opening style. They are designed to prevent tailgating and can be configured for ADA compliance.

**Simple Set Up**

Each GT Optical lane is equipped with an internal LCD touch screen interface that allows for easy configuration of Optical Turnstile functions and operating modes.



**Internal LCD Touch Screen Display**

**Lane Widths for Narrow, Wide and ADA Passage**

Passage widths accommodate 22" and 34" clear passage as well as 38" clear ADA passage. Cabinets are built wider to house the larger glass needed for wide passage. Custom glass etching and assorted glass colors also available.



**GT-1 Narrow Passage**

**GT-2 Wide Passage**

*(Also available in GT-3 ADA Passage)*

**About Hayward Turnstiles:**

Hayward Turnstiles has over 50 years of expertise in quality manufacturing of precision aircraft parts and reliable turnstiles.

Our factory, in Milford, CT, is AS9100 Certified to aerospace standards, resulting in superior turnstiles. Engineered to industrial grade specifications, they are durable and built tough for long lasting performance. Proudly made in the USA, we distribute worldwide with installations across the globe.

**Applications:**

The EZ Lane GT Low Glass is our premium retractable glass model and offers maximum security. Glass panels meet at the center when closed. The advanced design fully retracts the glass into the cabinet for a concealed look. Retractable glass model require wide cabinets to accommodate their complex design and opening style.

**STANDARD FEATURES**

Quick and smooth motorized swing glass for bi-directional operation and fast passage.

**Optical Detection:**

LED's linked to 32-bit CPU

**Throughput/Capacity:**

Up to 50 passages per minute for fast user throughput

**Card Stacking:**

- Lane remains open while authorizing multiple credentials
- Increases throughput during busy periods
- Allows up to 50 simultaneous transactions

**Alerts (Visible LED & Audible):**

- Access Allowed: Green arrow and confirmation tone
- Access Declined: Red X and rejection tones (3 types)

**Lane Status LED's (2):**

Located at each end on pedestal fronts

**Tailgate Detection:**

- Assures that only one person enters for each authorized credential
- Prevents "Piggybacking" by unauthorized persons

**Crawl Under Detection:**

Optical LED's detect all movement 6" above the floor

**Reader Integration:**

- Easily integrates to access control and fire safety systems through dry contact
- Reader mounts internally in cabinet under lane status LED
- Factory installation available - End user supplied reader

**Power Failure/Emergency Mode:**

- Includes battery back-up for temporary operation
- Barrier easily pushes open manually
- Barrier auto-resets when power is restored

**Power Requirement:**

24 VDC - Maximum power consumption 90-180 W

**Cabinet Style:**

- Stainless steel with stainless steel top
- Choice of Glass Panel Color (clear, dark gray, blue or bronze)

**Quality Control:**

Every unit is inspected, tested, and certified before shipment.

**OPTIONS**

**Climb Over Prevention:**

The addition of a stationary high glass panel inside and above the turnstile cabinet prevents crawl over of the cabinet

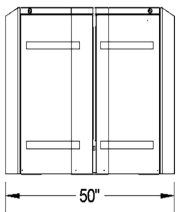
**Glass Panel Options**

Personalization of Glass Panels by etching (e.g. Company Logo)

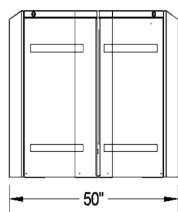
**Remote Lane Controller**

- Remotely control and change your Optical Turnstile parameters
- Perform diagnostic checks, analyze alarms, display patron counts and much more from an external color LCD touch screen

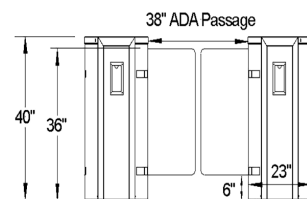
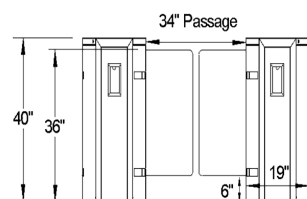
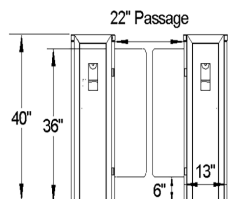
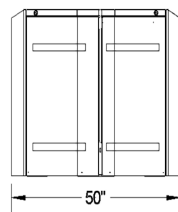
*GT-1 Narrow  
Passage*



*GT-2 Wide  
Passage*



*GT-3 ADA  
Passage*







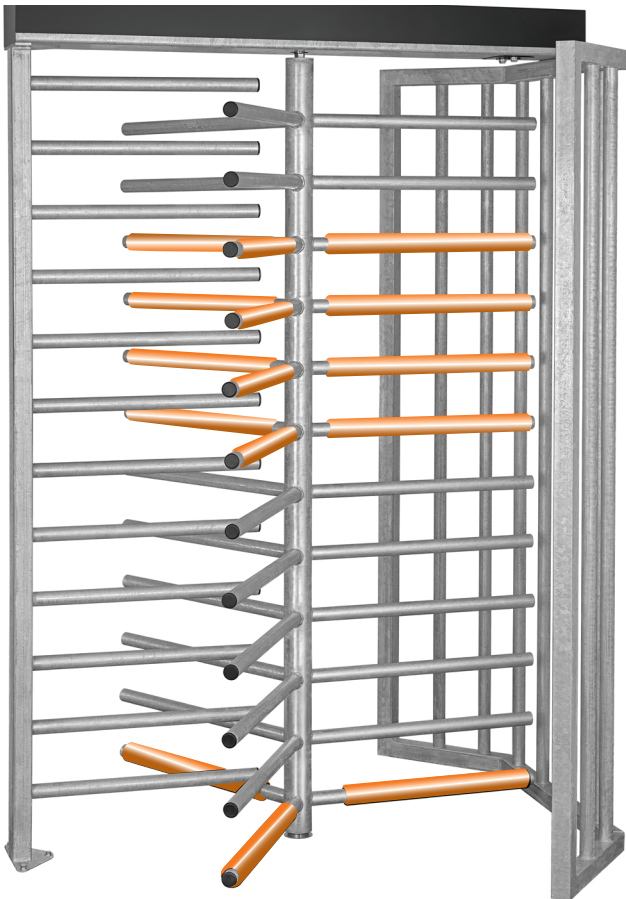
**Expert Advice. Great Value. Contact Us Today!**

**Call:** 203-647-9147 **Email:** sales@haywardts.com

**Website:** www.haywardts.com

**SecureTurn HT431  
Standard Passage**

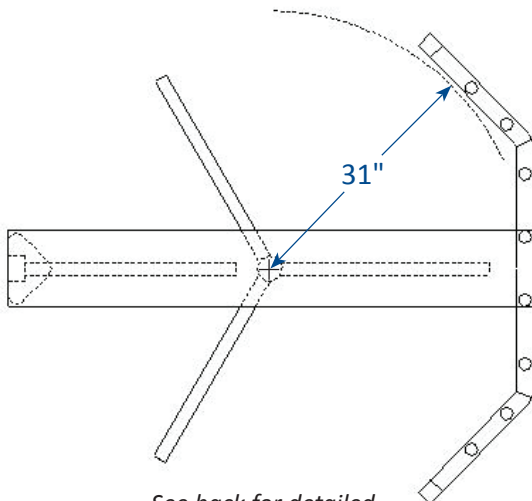
**Full height for maximum security.  
Heavy-duty construction lasts a lifetime.**



**SecureTurn HT431 Standard Passage**

Shown with optional Safety Sleeve Bulk Pack (15 sleeves).

Color choice of Safety Orange or Steel Gray.



See back for detailed dimensions and specifications.

**Applications:**

The SecureTurn HT431 standard passage full height turnstiles are designed and engineered to meet all your security and access control requirements. Wherever control of pedestrian traffic is necessary, these full height turnstiles will perform flawlessly. Used as either stand alone units or as part of a fully integrated security control package, these quality turnstiles will fit your needs and your budget.

**Materials and finishes available in:**

- Hot Dip Galvanized Steel
- Powder Coat over Steel
- 304 Stainless Steel

**Padded Safety Sleeves helps prevent accidents and enhance turnstile usability (optional):**

Avoids injuries – Reduces bruising – Stops heel slams  
Softens impacts – Easy-grab cushion grip  
Cool to the touch in heat – Insulates bars in cold

**Other single passage models in this series:**

- SecureTurn HT439 Wide Passage 39"
- SecureTurn HT448 Extra Wide Passage 48"

**Double passage models in this series:**

SecureTurn HT430T tandem size for standard passage consists of (2) SecureTurn HT431 in a space saving layout.

**About Hayward Turnstiles:**

Hayward Turnstiles has over 50 years of expertise in quality manufacturing of precision aircraft parts and reliable turnstiles.

Our factory, in Milford, CT, is AS9100 Certified to aerospace standards resulting in superior turnstiles. Engineered to industrial grade specifications, they are durable and built tough for long lasting performance. Proudly made in the USA, we distribute worldwide with installations across the globe.

Get in touch with us for expert advice, design assistance, project review, free quotes and for help with your security needs.

**\*SAFETY SLEEVE SAVINGS BONUS**

Your choice of with any full height turnstile order:

- Heel Pack (3 sleeves) - \$149.95 (**Save \$149.95**)...now **FREE\*** or
  - Bulk Pack (15 sleeves) - \$749.95 (**Save 33%**)...now **\$499.95\*** or
  - Total Pack (36 sleeves) - \$1,799.95 (**Save 33%**)...now **\$1,199.95\***
- Additional sleeves \$49.95 each...Call 203-647-9154 for details.

## HT431 Specifications

### Applications:

The SecureTurn HT431 standard passage full height turnstiles are designed and engineered to meet all your security and access control requirements. Wherever control of pedestrian traffic is necessary, these full height turnstiles will perform flawlessly. Used as either stand alone units or as part of a fully integrated security control package, these quality turnstiles will fit your needs and your budget.

### Product Features:

Materials and finishes in your choice of:

- Hot dipped galvanized steel
- Powder Coat over steel
- 304 Stainless Steel

### Design & Construction:

- Designed for secure operations with aesthetics in mind
- Choice of right or left handed direction
- Fully welded exterior components
- Heavy-duty lifetime construction

### Turnstile Operation:

- Self centering mechanism with hydraulic shock suppression
- Permanently lubricated bearings
- Clockwise, counter clockwise, or bidirectional passage

### Options:

- Electronic locking module featuring heavy-duty 24 VDC solenoids and card reader interface
- Fail-Safe (*free passage on power failure*)
- Fail-Lock (*locked passage on power failure*)
- Interfaces with card readers, biometrics, wireless remotes, push button, metal detectors, etc...
- Card reader mounting plates
- Electronic six digit resettable counter with LCD display and ten-year lithium battery
- Manual key override (*both directions*)
- Red/Green indicator lights
- Safety Sleeves (*Safety Orange or Steel Gray*)
- Additional options available upon request

### Electrical Specifications:

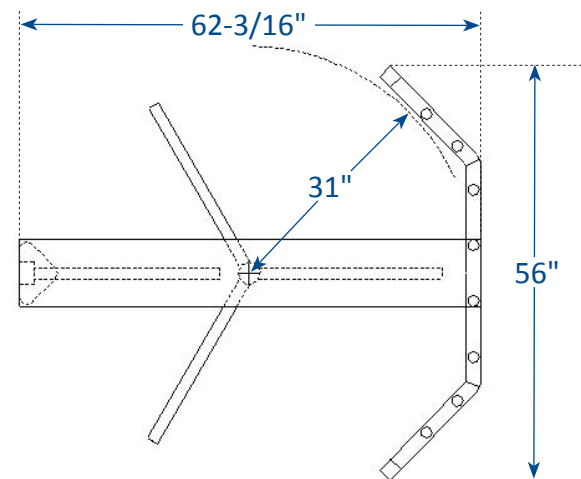
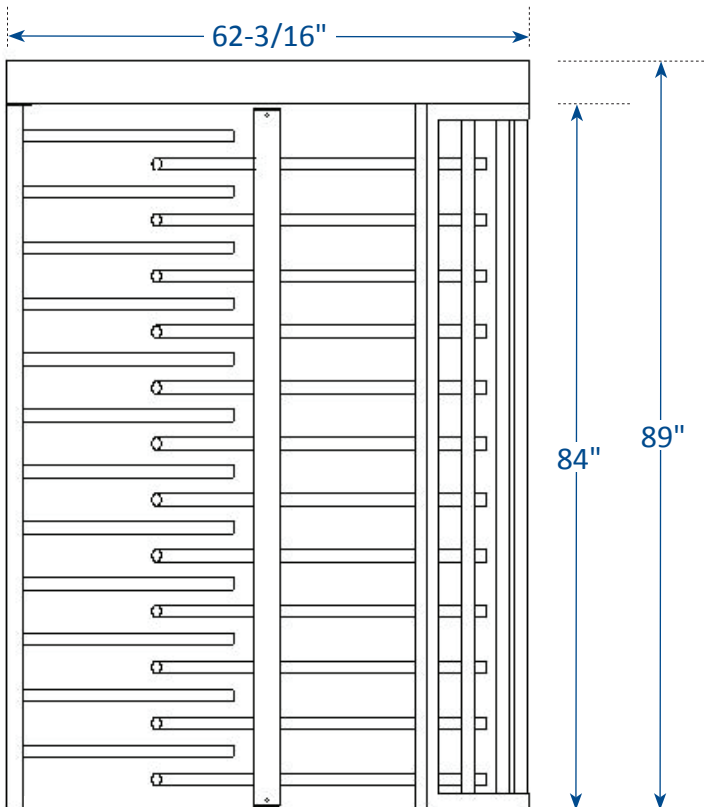
Power supply input 100-240VAC (.7 amp) 50/60hz output 24VDC (1.1 amp) All components UL recognized

### Warranty:

Units are warranted against defects in materials and workmanship for a period of one year from date of delivery. See warranty information for specific details.



## HT431 Dimensions



**Expert Advice. Great Value. Contact Us Today!**

Call: 203-647-9147 Email: sales@haywardts.com

Website: www.haywardts.com

**HAYWARD TURNSTILES, INC.**  
160 Wampus Lane, Milford CT 06460

**Expert Advice. Great Value. Contact Us Today!**

**Call:** 203-647-9147 **Email:** sales@haywardts.com  
**Website:** www.haywardts.com

## SwingGate HTSG

- Full Height For Maximum Security
- Industrial Grade Specifications
- Lifetime Performance

- Push Bar for Quick Exit
- Ships Preassembled
- Quick Installation Into Fence Lines



**HTSG**

Shown in Galvanized Steel

### **Applications:**

The HTSG High Security gates are manufactured to commercial grade specifications and designed to perform in the harshest environments. They are a popular choice for high-security areas and industrial applications such as chemical plants, power stations, and refineries.

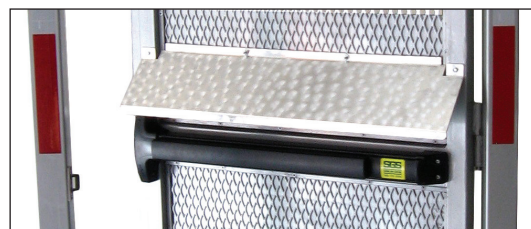
Built from heavy gauge, military-grade steel, the HTSG door assembly is fully welded and features stainless steel hinges for a lifetime of reliable performance. The frame is tamper-resistant, with rigid expanded metal grating top and bottom. The unit also includes a push bar for quick exit and emergency egress. Shipped pre-assembled, it installs quickly and integrate easily into existing fence lines.

### **About Hayward Turnstiles:**

Hayward Turnstiles has over 50 years of expertise in quality manufacturing of precision aircraft parts and reliable turnstiles.

Our factory, in Milford, CT, is AS9100 Certified to aerospace standards, resulting in superior turnstiles. Engineered to industrial grade specifications, they are durable and built tough for long lasting performance. Proudly made in the USA, we distribute worldwide with installations across the globe.

Get in touch with us for expert advice, design assistance, project review, free quotes, and for help with your access control needs.



**Push Bar** – Push-bar shield for tamper resistance and weather protection.

## HTSG Specifications

### Applications:

The HTSG High Security gates are manufactured to commercial grade specifications and designed to perform in the harshest environments. They are a popular choice for high-security areas and industrial applications such as chemical plants, power stations, and refineries.

### Materials And Finishes Available In:

- Hot Dipped Galvanized Steel
- Powder Coated Over Steel
- Glow-in-the-Dark (*indoor use only for power failure*)
- Stainless Steel

### Design & Construction:

- 3" x 3" heavy weight 11 gauge steel
- Industrial grade expanded metal grating
- Stainless steel hi-performance hinges
- Built for harsh and extreme environments
- Heavy-duty, durable, and long-lasting construction

### Standard Features:

- Choice of right or left-handed swing.
- Exit push-bar with keyed entry.
- Aluminum push-bar shield for tamper resistance and weather protection.
- Barb arm extensions for extra height
- Subterranean cross members for below grade mounting, or diamond plate steel for above ground installation

### Options:

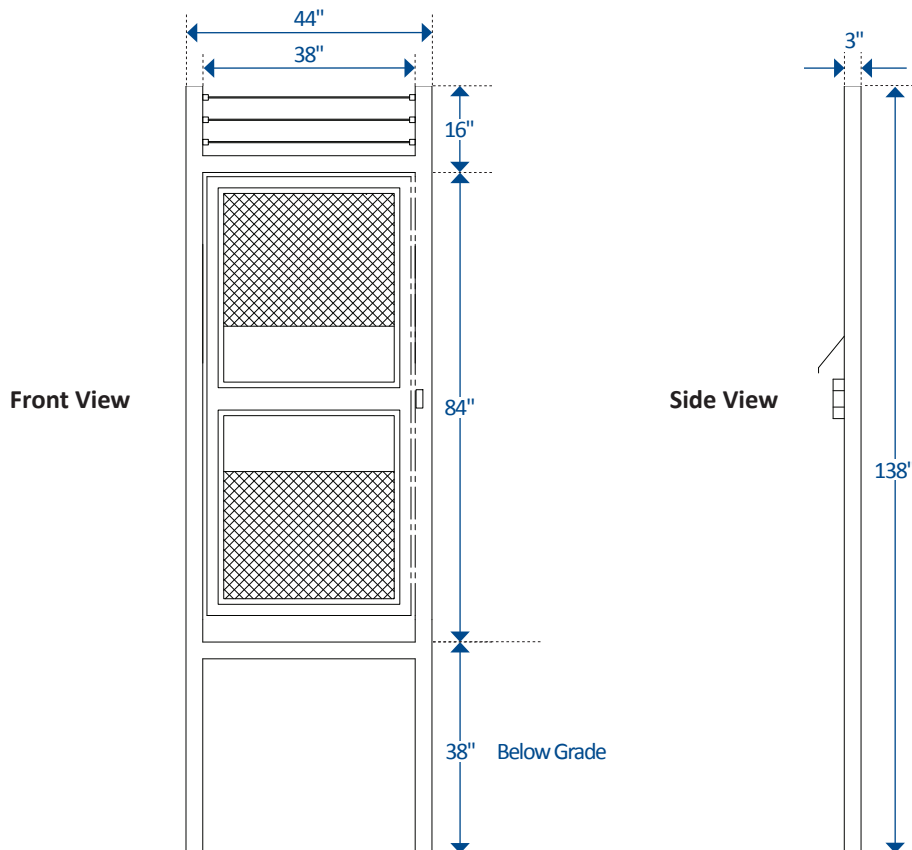
- Self-closing hydraulic gate
- Vertical pickets behind metal grating
- Push-bar with electric or mechanical keypad, or reader interface

### Warranty:

Units are warranted against defects in materials and workmanship for one year.



## HTSG Dimensions





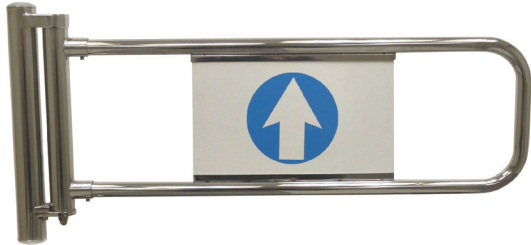
**Expert Advice. Great Value. Contact Us Today!**

**Call:** 203-647-9147 **Email:** sales@haywardts.com

**Website:** www.haywardts.com

## Swing Gate SG300 Chrome or Stainless

**Mid-Range Value • Rounded corners • One or two way swing • ADA & custom sized**



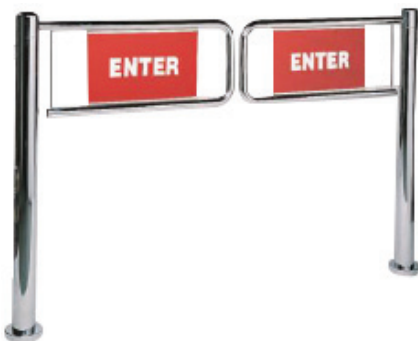
### SwingGate SG300 wall mount

(36" ADA and custom sized widths from 20"-40")



### SwingGate SG300 single

(36" ADA and custom sized widths from 20"-60")\*



### SwingGate SG300 double

(ADA and custom sized widths from 40"-72")\*

#### Applications:

Handicap gates provide authorized access for easy entry and/or exit. They restrict traffic, provide handicap accessibility, and are frequently used as an access point for hand trucks, carts, and deliveries. Popular applications also include retail stores, schools, libraries, cafeterias, and health club facilities where inexpensive reliable security is required. Our SwingGates are designed to be paired with our matching turnstile models and can be configured to offer different levels of functionality based upon your needs and budget.

The SG300 is our mid-range priced, rounded corner, self-closing gate and available in a variety of configurations. Both the chrome and stainless steel frames are strong, durable and built tough for long lasting reliable performance. Available mounting styles include: single width wall mount, single width floor post, or double width floor post (French-door style).

The wall mount can be used with or without a matching stop post. The single width includes a floor post, matching stop post, strike plate and matching floor flanges. The double width includes two floor posts hinged on the outside corners (no stop post) and matching floor flanges.

All SG300 models include a self-closing heavy-duty hinge, a full size 36" clear ADA opening for handicap access, and either a one way 90 degree swing, or two-way 180 degree swing. The price includes your choice of custom size widths (30" to 40" single, or 60" to 72" double), and signage (6 options).

*Available options include; an electric magnetic strike lock (integrates with access control systems), push-button activation (momentary or timer), wall mounting, custom sized widths (from 20"-60"), and signage.*

#### About Hayward Turnstiles:

Hayward Turnstiles has over 50 years of expertise in quality manufacturing of precision aircraft parts and reliable turnstiles.

Our factory, in Milford, CT, is AS9100 Certified to aerospace standards resulting in superior turnstiles. Engineered to industrial grade specifications, they are durable and built tough for long lasting performance. We distribute worldwide and have installations across the globe.

\*Post & Rail option available. Custom sized to fit any opening.

**Applications:**

The SG300 is our mid-range priced, rounded corner, self-closing gate and available in a variety of configurations. Both the chrome and stainless steel frames are strong, durable and built tough for long lasting reliable performance. Popular applications also include retail stores, schools, libraries, cafeterias, and health club facilities where inexpensive reliable security is required.

**Design & Construction:**

- Stainless steel or chrome tubing with rounded corners (2-1/4" or 2-3/4" floor post diameter & 1-1/4" gate arm diameter)
- Decorative low profile matching flange cover
- Interior or Exterior Use (Stainless only)

**Model Style:**

- Wall Mount – single width (with or without stop post)
- Floor Mount – single width (with or without stop post)
- Floor Mount – double width (French door style – no stop posts needed)

**Specifications:**

- 36" ADA clear opening single width (standard sized)
- 72" clear opening double width (standard sized)
- One-way 90 degree swing or two-way 180 degree swing
- Self closing heavy-duty hinge with adjustable closer
- Signage (6 options)

*Custom sizes at no extra cost:*

- 30"- 40" sizes for single widths
- 60"-72" for double widths (French door style)

**Options:**

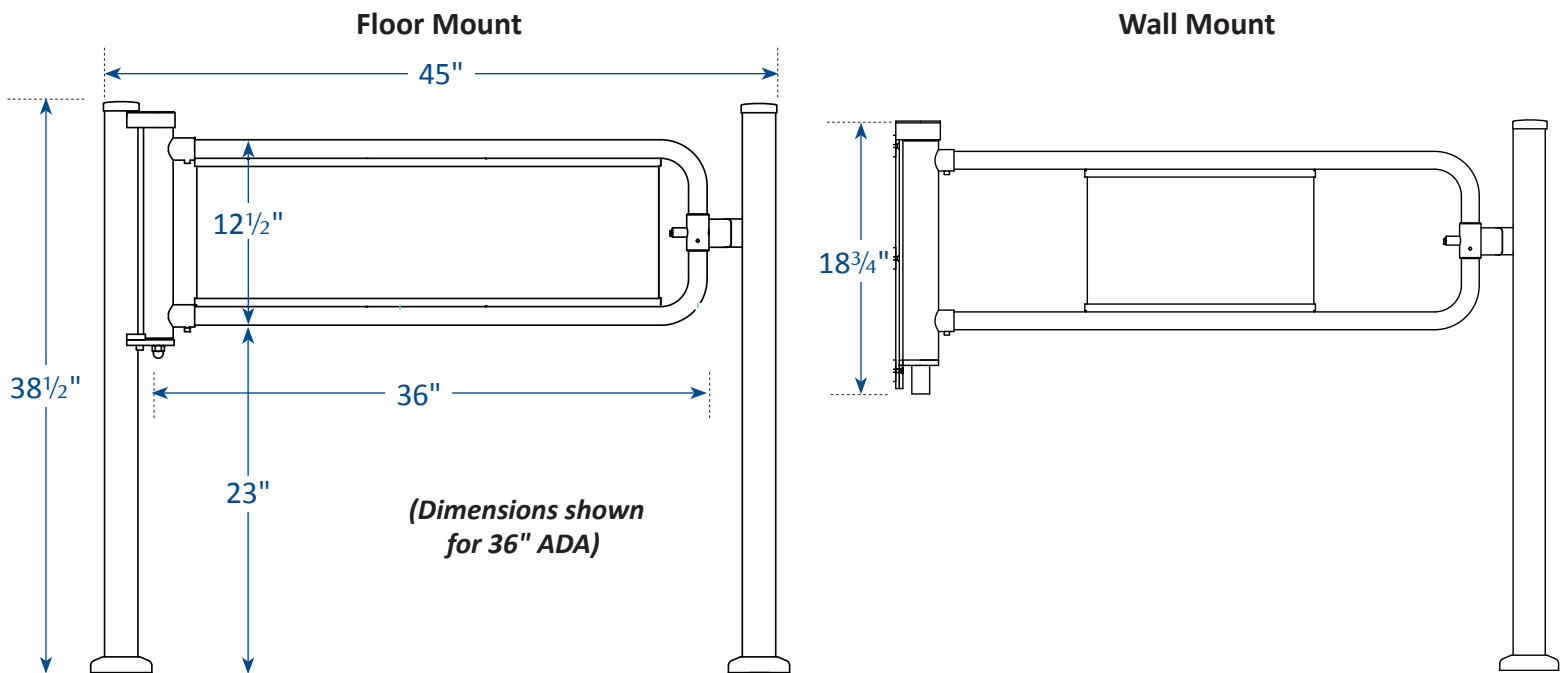
- Electronic locking module featuring heavy-duty 24 VDC solenoids fail-safe (free passage on power failure)
- Interfaces with card readers, pc attendance, wireless remotes and push button activation (momentary or timer)
- Custom sized matching post & rail to fill open space

**Electrical Specifications:**

Power supply input 100-240VAC (.7 amp) 50/60hz output 24VDC (1.1 amp) All components UL recognized

**Warranty:**

Units are warranted against defects in materials and workmanship for a period of one year from date of delivery. See warranty information for specific details.





**Expert Advice. Great Value. Contact Us Today!**  
Call: 203-647-9147 Email: sales@haywardts.com  
Website: www.haywardts.com

**FastTurn LC100  
Black or Stainless**

**Entry-Level Value • Simple classic design • Strong and durable • Lasts a lifetime**



**FastTurn LC100  
(Black finish)  
with Padded  
Safety Sleeves**



**FastTurn LC100  
(Stainless)**  
Shown without sleeves

**Padded Safety Sleeves for turnstiles help prevent accidents and enhance usability.**

- Avoids injuries
- Reduces bruising
- Softens impact
- Cushioned padding
- Easy to push
- Low profile discreet look

See back for detailed dimensions and specifications.

**Applications:**

The FastTurn LC100 is the perfect waist high turnstile for a variety of applications ranging from athletic facilities, cafeterias, and schools, to amusement parks, stadiums and office buildings.

The simple classic, rugged and durable design has been built to withstand the abuse of a mass transit system while maintaining an affordable budget price.

Wherever control of pedestrian traffic is necessary, these waist high turnstiles will perform flawlessly. Used as either stand alone units or as part of a fully integrated security control package, these turnstiles offer great quality and value.

**Materials and finishes available in:**

- Black powder coat over steel
- 304 Stainless Steel

**Other single passage models in this series:**

- FastTurn LC100P Portable Stainless (Entry-Level Value)
- FastTurn MR100 Stainless (Mid-Level Value)
- FastTurn MR200 Stainless (Premium Value)
- FastTurn MR200 Plus Stainless (Premium Value)

**About Hayward Turnstiles:**

Hayward Turnstiles has over 50 years of expertise in quality manufacturing of precision aircraft parts and reliable turnstiles.

Our factory, in Milford, CT, is AS9100 Certified to aerospace standards resulting in superior turnstiles. Engineered to industrial grade specifications, they are durable and built tough for long lasting performance. Proudly made in the USA, we distribute worldwide with installations across the globe.

Get in touch with us for expert advice, design assistance, project review, free quotes and for help with your security needs.

**\*FREE Safety Sleeve 3 Pack with any Waist High Turnstile order.**  
Was \$149.95 (Save \$149.95)...now FREE!  
Call 203-647-9154 for details.

## FastTurn LC100 Specifications

### Applications:

The FastTurn LC100 is the perfect waist high turnstile for a variety of applications ranging from athletic facilities, cafeterias, and schools, to amusement parks, stadiums and office buildings.

The simple classic, rugged and durable design has been built to withstand the abuse of a mass transit system while maintaining an affordable budget price.

### Product Features:

Materials and finishes in your choice of:

- Black powder coat over steel (LC100-BPC)
- 304 Stainless Steel (LC100-SS)

### Design & Construction:

- Simple classic and functional design for secure operations
- Heavy duty steel locking bars, cam, and roller assemblies
- Stainless steel arms and lid
- Strong and durable to last a lifetime of use

### Turnstile Operation:

- Single direction or bi-directional passage
- Self-centering control head with hydraulic shock suspension

### Options:

- Electronic locking module featuring heavy-duty 24 VDC solenoids and card reader interface
- Fail-Safe (*free passage on power failure*)
- Fail-Lock (*locked passage on power failure*)
- Interfaces with card readers, pc attendance systems, push button, wireless remotes and metal detectors.
- Card reader mounting plates
- Electronic six digit resettable counter with LCD display and ten-year lithium battery
- Manual key override (*both directions*)
- Red/Green status indicator lights
- Additional options available upon request

### Electrical Specifications:

Power supply input 100-240VAC (.7 amp) 50/60hz output 24VDC (1.1 amp) All components UL recognized

### Warranty:

Units are warranted against defects in materials and workmanship for a period of one year from date of delivery. See warranty information for specific details.



## FastTurn LC100 Dimensions

