



Pineview Run

THE PRIVATE MOTORING SANCTUARY

2250 Case Hill Road, LaFayette, NY • (315) 960-2566

A World-Class Motoring Destination



The Clubhouse Lodge

Our 5,000 sq. ft. timber-frame sanctuary features a member-exclusive lounge, towers of fieldstone, and cathedral ceilings. It is the premier space for post-session analysis, networking, and rustic automotive culture.



Technical Road Course

Carved into 120 acres of high-altitude forest, our 2.25-mile circuit features 16 technical corners and 360 feet of elevation change. We reward precision over sheer terminal velocity.

CORE SERVICES & PACKAGES

APEX RUSH EXPERIENCE

Push your vehicle to its absolute limit in 600-second precision sprints. These high-intensity sessions are designed for experienced drivers to master technical cornering in a controlled, high-stakes environment without public road restrictions.

ROOKIE ROADMAP

A multi-stage curriculum taking novices from basic car control to advanced racing line analysis. Includes personalized professional coaching, skid pad drills, and classroom theory to ensure a safe and rapid progression to technical mastery.

THE CHALLENGE CUP

Our signature wheel-to-wheel series featuring classes determined by tire width (C1-C3). It provides a level playing field where driver skill is the primary differentiator. Season-long points tracking culminates in an annual awards banquet.

TRACKSIDE STORAGE

Secure your asset in our premium climate-controlled garage suites. Starting at \$389/mo, these units offer immediate track access, 24/7 security monitoring, and space for tools. Optional mezzanine levels are available for private lounge builds.

Local Lodging Directory

SORTED BY PROXIMITY TO THE GATE

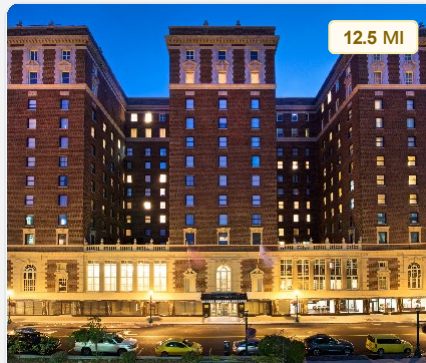


12.2 MI

THE PARKVIEW HOTEL

Syracuse, NY • Head south on I-81 S to exit 14 (Tully), then north on Route 11 to Case Hill Road.

theparkviewhotel.com



12.5 MI

MARRIOTT DOWNTOWN

Syracuse, NY • Direct city access to I-81 S for a straight run through the technical valley to LaFayette.

marriott.com



14.0 MI

THE RANDOLPH HOTEL

Nedrow, NY • Direct access via Route 11 S (Salina St) through Nedrow and into the rolling LaFayette hills.

wyndham.com

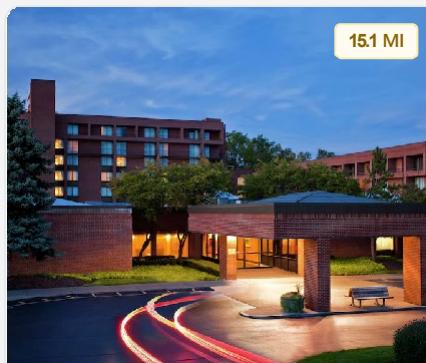


14.8 MI

BRAE LOCH INN

Cazenovia, NY • Scenic westward drive via US-20 W (the historic Cherry Valley Turnpike) to the track gates.

braelochinn.com



15.1 MI

DOUBLETREE HILTON

East Syracuse • Fast transit via I-481 S to I-81 S, exiting in the heart of the technical valley floor.

hilton.com



16.0 MI

HOMEWOOD SUITES

Liverpool, NY • I-81 S transit through city center, providing a fast arterial route to the high-altitude circuit.

hilton.com



16.5 MI

EMBASSY SUITES

Syracuse, NY • Located at Destiny USA; immediate I-81 S on-ramp for a seamless 20-minute drive south.

hilton.com



18.0 MI

MIRBEAU INN & SPA

Skaneateles, NY • Premium scenic route via NY-174 S or US-20 E through stunning Finger Lakes topography.

mirbeau.com



18.1 MI

FLX LODGING

Skaneateles, NY • Direct eastward traverse on US-20 E, crossing the Skaneateles and Otisco watersheds.

flxlodging.com

Dining & Treats

SORTED BY DISTANCE FROM GATE

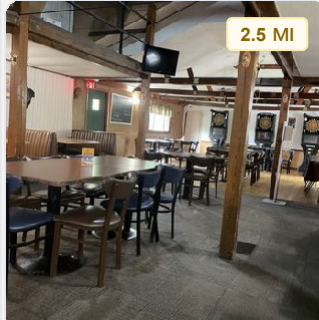


2.4 MI

BRICKYARD BBQ

Slow-smoked brisket, ribs, and local craft drafts in a rustic sports bar atmosphere.

thebrickyard.com

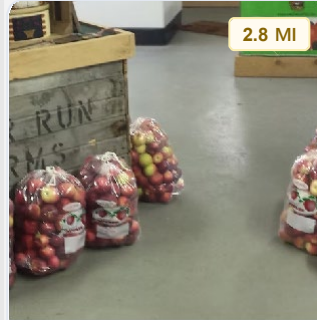


2.5 MI

LAFAYETTE INN

Classic American comfort food served within a historic local landmark setting.

lafayetteinn.com

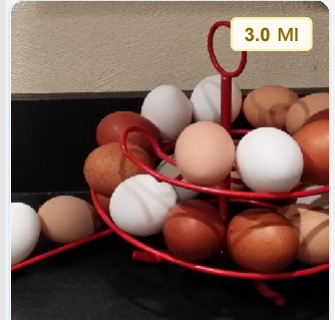


2.8 MI

DEER RUN FARMS

Fresh orchard apples, local seasonal produce, and famous hot cider donuts.

deerrun.com



3.0 MI

MALLORY MARKET

Gourmet deli sandwiches, artisanal cheeses, and essential local pantry staples.

mallory.com



4.1 MI

1911 TASTING

Hard ciders, spirits, and elevated pub fare with panoramic orchard views.

1911est.com



4.8 MI

SWEET BASIL

High-quality Italian classics and wood-fired specialties in an intimate venue.

sweetbasil.com

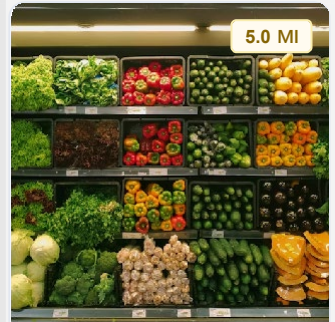


4.8 MI

BLOOMIN' CUP

Specialty espresso, fresh-baked pastries, and light breakfast/lunch options.

tully.us

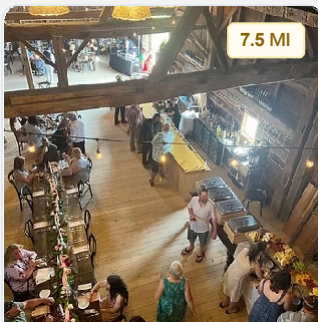


5.0 MI

TULLY MARKET

Full grocery services with a premium deli counter and prepared grab-and-go meals.

tullymarket.com

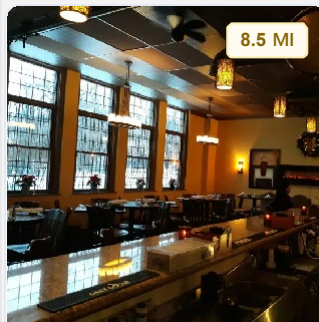


7.5 MI

NAVARINO

Homemade farm pies, local honey, and a seasonal "U-pick" orchard experience.

navarino.com

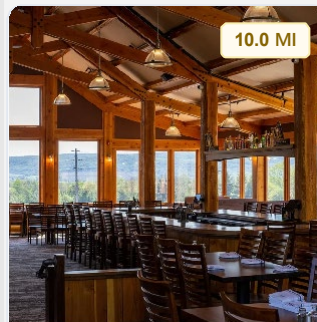


8.5 MI

SCHOOL & VINE

Refined seasonal American cuisine focused on locally-sourced, fresh ingredients.

schoolandvine.com

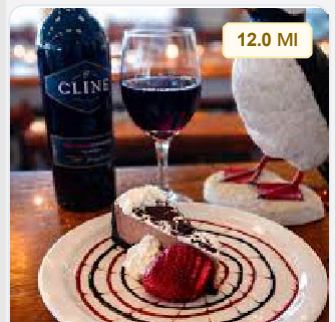


10.0 MI

HEUGA'S ALPINE

Slope-side après-ski vibes featuring gourmet burgers and local draft beers.

skicny.com



12.0 MI

THE PUFFINBIRD

Creative refreshments, specialty ice cream treats, and a classic summer pitstop.

skicny.com

Regional History

1. NAMED FOR A HERO

The town was established in 1825 to commemorate General Marquis de LaFayette's grand "Farewell Tour" of the United States, honoring his vital support during the American Revolution.

2. THE CARDIFF GIANT

In 1869, a 10-foot "petrified giant" was unearthed on William Newell's farm nearby. This world-famous archaeological hoax attracted thousands and became a hallmark of American pranksterism.

3. BIRTHPLACE OF PEACE

LaFayette borders the Onondaga Nation, the "Keepers of the Fire" for the Haudenosaunee Confederacy, representing the world's oldest living participatory democracy.

4. THE GRAND CROSSING

The local hamlet marks the historic intersection of US-11 and US-20. The latter is the longest road in the United States, stretching 3,365 miles from Oregon to Massachusetts.

5. ERIE CANAL VISIONARY

Local pioneer Joshua Forman was the first legislator to formally propose the Erie Canal in 1808, which established New York City as the world's commercial hub.

6. INDUSTRIAL RAILROAD

The Syracuse & Binghamton Railroad (1851) established the Tully Valley as an essential logistics artery, transporting regional products to the industrializing North.

Regional Excursions



TINKER FALLS

Magnificent 50-foot hanging waterfall with a unique trail allowing visitors to walk directly behind the curtain of water.



GREEN LAKES

Rare meromictic lakes formed by glaciers. Striking emerald-green waters that support unique ancient plant life.



SKANEATELES LAKE

Pristine blue waters and a luxury village atmosphere featuring boutique shops, boat tours, and fine lakeside dining.



SONG MOUNTAIN

Premier regional ski resort with 24 trails. Off-season topography serves as an ideal training ground for performance sport.



CLARK RESERVATION

Geologic landmark featuring a cliff-rimmed plunge basin lake and rare prehistoric plant species from the last ice age.



LABRADOR HOLLOW

Protected wetlands with a 2,000ft boardwalk and a world-famous hang-gliding launch point at the summit of Jones Hill.



HIGHLAND FOREST

"Adirondacks of Central NY" featuring 20+ miles of trails and panoramic views from the county's highest point.



PRATTS FALLS

Dramatic 137-foot glacial waterfall over limestone cliffs, originally the site of the county's very first mill (1796).



BEAVER LAKE

Premier birdwatching destination with over 200 species and extensive boardwalks through pristine cedar swamps.

Pineview Run

AUTO & COUNTRY CLUB • (315) 960-2566



© 2026 PINEVIEW RUN • BUSINESS DEVELOPMENT