

**Special Tribute to Ezekiel Vaughn
Past Chair, Board of Directors
Plano Child Care Learning Academy**



**CITIZENZ
FOR CHILDREN**
REACHING BACK • GIVING BACK



**TWIN CREEKS GOLF COURSE
501 Twin Creeks Rd. • Allen, Texas 75013
September 2, 2022, 8:00 a.m.**

THANK YOU TELECOM for being a PLATINUM SPONSOR



CONGRATULATIONS

**Plano Child Care
Learning Academy**

**52nd
Anniversary**



Energy Efficient Lamps



LED Lamps



Flashlights and more

**Save Time and Money
Visit TES85.COM**



TELECOM ELECTRIC SUPPLY COMPANY

Established 1985

1304 Capital Avenue
Plano, Texas 75074

Phone: (972) 422-0012 - Fax: (972) 422-0467

www.tes85.com

info@tes85.com

TELECOM ELECTRIC SUPPLY COMPANY

THANK YOU TOYOTA FOR BEING A PLATINUM SPONSOR

*A TIME TO REFLECT ON
THE PLACES WE'VE BEEN.
AND WHERE WE'RE GOING.*



We salute those who lead by example—who empower their teams and uplift their communities. As we remember the past to create a prosperous future, Toyota is proud to sponsor the Plano Child Care Learning Academy 52nd Anniversary celebration.

Through your accomplishments and contributions, you've helped define the path for others to follow.



TOYOTA

Come Experience Shiloh



SHILOH MISSIONARY BAPTIST CHURCH
PASTOR ISIAH JOSHUA, JR.



Sunday Morning Worship
11:00 a.m. in the Sanctuary

SHILOH
MISSIONARY BAPTIST CHURCH
Where Community Becomes Family

920 E. 14th Street | Plano, TX 75074
972-423-6695 | www.smbcplano.org

PASTOR
Isiah Joshua, Jr.
FIRST LADY
Linda Joshua

<https://www.facebook.com/SMBcPlano> | Shiloh Baptist Church of Plano YouTube

Program

Theme 2022:

“Citizenz for Children: Reaching Back and Giving Back”

Master of CeremoniesCraig Martin

Welcome/Opening Remarks Craig Martin
Vice Chair, PCCLA Board
of Directors

LUNCH

Tribute to Ezekiel Vaughn Shirley Young Shell
Chair, PCCLA Board of Directors

PCCLA Expressions Diana Dues
Executive Director, PCCLA

Remarks Al Smith, Supporter/Advocate
“Why Celebrate Plano Child Care Learning Academy”

Golf Tournament Awards Ceremony Craig Martin

Recognition of Sponsors Shirley Young Shell

SILENT AUCTION CLOSING

RAFFLES

Closing Remarks Craig Martin/Shirley Young Shell

About Plano Child Care Learning Academy

The Plano Child Care Learning Academy (PCCLA), a 501(c)(3) non-profit organization has been providing affordable child care for children since 1970.



This year we celebrate 52 years of service. PCCLA, formerly known as the Plano Day Care Center, is located in the Historic Douglass School Building at 1111 Avenue H, Suite 100 in Plano, Texas. Plano Child Care Learning Academy has dedicated itself to helping working parents meet the educational, physical and emotional needs of their children.

Plano Day Care Center was started by concerned “fathers” in the Douglass Community and citizens/businesses in Plano. The charge to start up a child care program for low income families in the area was led by John F. Hightower, Charles Rice, Steve Goodman, Travis Berry and Byron Schaff. Their goal was to provide affordable child care for mothers who needed to work outside the home to help support their family. Additionally, school administrators were reporting that school age children were not coming to school because they were staying home to care for younger brothers and sisters.

The original center was to be housed in two rooms in the Douglass School for two to six year olds. Patrons were charged \$.75 to \$1.50 per day and opened with \$3000 of donation pledges in the bank account. Some of the early donors of money, equipment and supplies were Capital Wire and Cable, Dougherty Pharmacy, NC Jeffrey’s Real Estate and the Plano B&PW Club.

After the charter of the Plano Day Care Center, the Dallas United Way subsidized the center along with State and Federal Government Food Programs. In 2010, the United Way changed their mission and stopped funding the Day Care Center. This loss of funding was devastating for the center in that by this time our fees were based on a sliding scale related to household income and number of family members. Despite the loss of funding, it was critical that the center continue to serve the Douglass community’s working families and single parents. The center had become the “home away from home” that provided a safe environment for children to grow and develop regardless of what their family could or could not pay. For financial sustainability, in 2011 the center changed to a set tuition fee, but that tuition fee continues to be the lowest rates in the area.

THANK YOU from PCCLA



many, many, many, many, many

thanks

**Citizenz for Children:
Reaching Back
and
Giving Back**

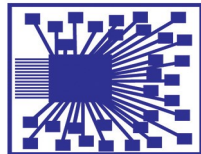
SPONSORS



TOYOTA



TES85



Telecom Electric Supply Company

Title Sponsor—\$25,000

About Plano Child Care Learning Academy

(cont'd)

Originally the center staff was composed of community volunteers. The first paid center director was Mrs. Wilma Stimpson. She served as director for a number of years until illness forced her to retire. Shortly after her departure, Mr. Pete Hopcus became the administrator with Mrs. Mattie Dansby as a teacher; subsequently, Mattie became the new center director. Mrs. Dansby served as the director for 37 years. The current Executive Director is Ms. Diana Dues.

Through the years, the “Home Away from Home” has evolved into a premier program that prepares children to successfully transition to public school. The program provides experiences in language, math, science, art, creativity, life skills/etiquette and motor development activities. To accurately reflect the quality of child development and education provided, the name was changed in 2018 to the Plano Child Care Learning Academy (PCCLA).

Currently the center is licensed for 73 children infant to ten years (after school care). The infant center was added in September 2015. Transportation from school to the center is available. The Academy operates Monday through Friday, 6:30 a.m. until 6:30 p. m. Two nutritious meals are provided daily (breakfast and lunch) and a mid-afternoon snack. Naps, resting periods, and outdoor play are incorporated in the day.

The income of most families using the Academy, qualify for child care assistance programs through Dallas County, Child Care Group Program (CCA) and Collin County Program, Child Care Management Service (CCMS) supplement to defray costs of care. However, the CCAP process can take months leaving families without care. To assist these families, PCCLA works with the parents to defray cost through donations and fundraisers to allow families to enroll their children and go to work while awaiting approval.

Staff members are highly qualified through training and work experience. Through their guidance the children’s natural curiosity and self-confidence are nurtured. Each child is encouraged to flex their mind, body and spirit. Our children move on to kindergarten well prepared and socially mature. We proudly graduate students annually in our preschool classes.

Currently, a 11-member Board of Directors provides oversight of the operation of the center. Arthur Young served as the Board Chair from 1986 to 2018. Ezekiel Vaughn was elected Chairman in 2018 and served until his death in 2022. Board members now serving include Chair Shirley Young-Shell, 1st Vice Chair Craig Martin, 2nd Vice Chair Arthur Young, Treasurer Fred Moses, Secretary Pamela Hart, Helen Young, Janice Martin, Carolyn Hamilton Evans, Harold Cole, David Stephens, and Maxine Carroll.

In Memory of Our Founder

John F. Hightower



Our founder, Mr. John Freeman Hightower, was born in August 1, 1913 in Paris, Arkansas. He attended public schools in Oklahoma, graduating from Moton High School in Taft, Oklahoma. Before entering high school, all eight grade students had to take a prerequisite state exam in the state of Oklahoma. John Hightower was recognized for having the highest score in his county (Muskogee).

He attended college at Huston-Tillotson College in Austin, Texas. He graduated Cum Laude with degrees in biology and mathematics. He later earned his Master's degree in Administration from Texas Southern University. He completed further study toward a doctorate at the University of North Texas at Denton and the University of California at Sacramento, California.

He arrived in Plano in 1957 and education in the community has never been the same. He worked as a science teacher, basketball coach and later principal of the Frederick Douglass School in the 1960s. In 1970, Mr. Hightower founded the Plano Child Care Learning Academy, a 501(c)(3) nonprofit organization, formerly known as the Plano Day Care Center with other concerned "civic leaders" of the Plano community.

Mr. Hightower died June 1, 2005. The seeds he planted continue to bloom today. His involvement in educational, community, and civic affairs remains an inspiration to the students and families in Plano.

As we honor Mr. Hightower, we should take note of his involvement to transform and unify individual communities. He worked as an advocate for all children and supported education as a means to make Plano a better place to live. In his honor, he and his wife, Myrtle Nash Hightower have an elementary school named after them, Hightower Elementary School.

SPONSORS



SHILOH

MISSIONARY BAPTIST CHURCH

Where Community Becomes Family

920 E. 14th St * Plano, Texas 75074



Neighborhood

CREDIT UNION

OUTREACH SPONSORS

IT'S NICE TO BE
IMPORTANT.
BUT IT'S MORE
IMPORTANT TO BE
NICE.

**Chavonnia
Martin**

*Even if you just
change one life,
you've changed the
world forever.*

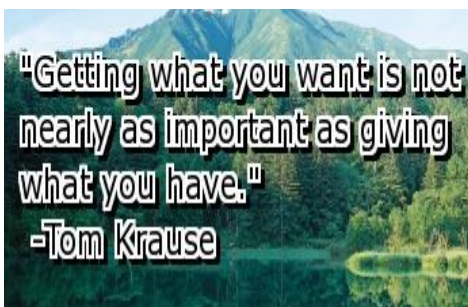
**Rev. Raymond Shaw
Pastor
Avenue Progressive
Baptist Church**



What is important is family, friends,
giving back to your community and
finding meaning in life.

Adrian Grenier

**Paul &
Sheila
Gendron**



"Getting what you want is not
nearly as important as giving
what you have."
-Tom Krause

Janice Martin



**PROCLAMATION
In Loving Memory Of
Ezekiel V. Vaughn**



*Ezekiel Vaughn
Chairman*

Whereas, the Plano Child Care Learning Academy has suffered a great loss in the home going of Ezekiel Vaughn, servant of God, faithful community leader and member of the Board of Directors for the Plano Child Care Learning Academy for 14 years, joyfully giving his time and talents unselfishly.

Whereas, Ezekiel was known to drop his plans for the day when called to help, where he served as a proficient story time reader, known to join in with a karaoke session with preschoolers, get on his knees to play house with toddlers and hold and calm a fussy baby.

Whereas, Ezekiel Vaughn served the last 5 years as Chairman of the Board of Directors, he led with excellence, always affirmed the value of each member. He led the organization forward to better serve the children, parents and families serviced by the Plano Child Care Learning Academy, to ensure that children and families have the comprehensive early childhood educational foundation they need to succeed in school and in life.

Therefore, be it resolved that

- Though our hearts are deeply saddened, the Plano Child Care Learning Academy Board of Directors will dedicate ourselves to continuing his legacy and work to keep the Academy viable in the Douglass community.
- We take comfort in the realization that memories of our time together, his joy and enthusiasm will often return in all its beauty and give us smiles in our sorrow



A light has gone out in our lives; Zeke was the joy and life of our board meetings and all that we were able to accomplish under his leadership.

*The Board of Directors, Plano Child Care Learning Academy
Shirley Young Shell, Craig Martin, Arthur Young, Fred Moses,
Pamela Hart, Maxine Carroll, Harold Cole, Carolyn Hamilton Evans,
Janice Martin, David Stephens, Helen Young*



NEED A BANK REFRESH

Neighborhood Credit Union offers free checking accounts, competitive loan rates, and great mortgage products.*

Open your new account or apply for your loan today!



myncu.com

Insured by NCUA

NMLS# 403562



*To join Neighborhood Credit Union, you must meet the membership requirements, including purchase and maintenance of the minimum required share(s) ("membership share") of \$25 as set forth in the Credit Union's bylaws. You authorize us to check your account, credit and employment history, and obtain reports from third parties, including credit reporting agencies, to verify your eligibility for the accounts and services you request. Free checking products are Kasasa Cash and Kasasa Cash Back and mean that neither account assesses a monthly service fee. Other fees may apply. For loan products, credit application is required. Must be 18 years of age or older and a Neighborhood CU member. Rates, terms and conditions are subject to change and may vary based on credit worthiness. Interest begins accruing the day the loan is funded. Restrictions may apply.

Data or text messaging rates may apply for QR code scan. Check your mobile plan for details.

OUTREACH SPONSORS

AT THE END OF THE DAY IT'S NOT ABOUT WHAT YOU HAVE OR EVEN WHAT YOU'VE ACCOMPLISHED... IT'S ABOUT WHO YOU'VE LIFTED UP, WHO YOU'VE MADE BETTER. IT'S ABOUT WHAT YOU'VE GIVEN BACK.

DENZEL WASHINGTON

**Craig
Martin**

When we give generously, we are thinking of others instead of ourselves, and the result is joy.

Tom Peterson

**Carolyn
Hamilton Evans**

When you've worked hard, and done well, and walked through that doorway of opportunity...you do not slam it shut behind you...you reach back, and you give other folks the same chances that helped you succeed.

— *Michelle Obama* —

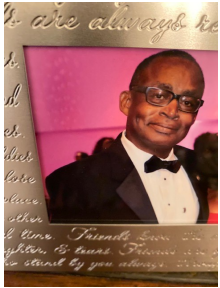
**Paul &
Sheila
Gendron**

"Somewhere along the way, we must learn that *there is nothing greater than to do something for others.*"

Martin Luther King Jr

David Stephens

OUTREACH SPONSORS



Mrs. Priscilla Davis
In Loving Memory of
LTC (Ret) Donald Davis

**WE MAKE A
 LIVING BY
 WHAT WE
 GET, WE
 MAKE A LIFE
 BY WHAT WE
 GIVE.**
CHURCHILL

**Eddie & Shirley
 Shell**

*Remember that the
 happiest people are not
 those getting more, but
 those giving more.*

**Arthur & Helen
 Young**

Do all the good you can,
 By all the means you can,
 In all the ways you can,
 In all the places you can,
 At all the times you can,
 To all the people you can,
 As long as you ever can.

John Wesley (1703-1791)

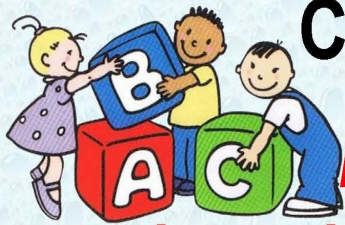
Pamela Hart

Alpha Phi Alpha Fraternity, Inc.
XI TAU LAMBDA CHAPTER
 NORTH DALLAS COUNTY

Congratulations
 TO THE
PLANO CHILD CARE LEARNING CENTER
 AND BEST WISHES FOR A
SUCCESSFUL ANNUAL FUNDRAISER!

BRO. ADRIAN ESCALANTE - CHAPTER PRESIDENT

BRO. ANTOINE FOSTER - VICE PRESIDENT	BRO. ANDREW FOREST - MEMBERSHIP
BRO. DR. MANCIL CARROLL - RECORDING SECRETARY	BRO. DR. K.C. MMEJE - DIR. EDUCATION
BRO. MARK CARTHLEDGE - CORRESPONDING SECRETARY	BRO. FREDERICK NICKENS - HISTORIAN
BRO. JOHNATHAN ROBINSON - TREASURER	BRO. BARCLAY HAYES - PARLIAMENTARIAN
BRO. CHARLES HEARNS - FINANCIAL SECRETARY	BRO. TIM FOSTER - SERGEANT-AT-ARMS
BRO. JERRY MAYNARD - CHAPLAIN	BRO. SHANE GILMORE - ASSOC. EDITOR OF THE SPHINX



Congratulations

to the

Plano Child Care Learning Academy

on your

“Celebration of 52 years of Service”

From Pastor Clarence Ford Jr. and the members of Hill Chapel C.M.E. Church of Plano, Texas.

May God continue to bless you.

Prayer! Praise! Purpose!



SPONSORS

OUTREACH SPONSOR

GOOD
FAITH
COMMUNITY
BAPTIST CHURCH

HERBERT L. WALTERS, SR., TH.D.
PASTOR

TO MOVE FORWARD, YOU HAVE TO GIVE BACK.

OPRAH WINFREY

SUPPORTERS

**Brian
and
Phyllis Wright**

**United
Mechanical
Consultants, Inc.
Robert Scott**

**Marcellus
Davis**

**Carmella
Bridges**

**Delores
Johnson
Davis**

**Michael
Carter**

**Phyllis
Armstrong**

**Gary
Cook**

Golf Hole Sponsors

- Hole #1 Telecom Electric Supply
- Hole #2 Toyota
- Hole #3 Kappa Alpha Psi Guide Right Foundation
- Hole #4 Zeta Phi Beta
- Hole #5 Alpha Kappa Alpha
- Hole #6 Ms. Diana Dues
- Hole #7 Hills Chapel CME Church
- Hole #8 Shiloh Missionary Baptist Church - Plano
- Hole #9 Classic Rehabilitation
- Hole #10 Plano Early Lions
- Hole #11 Cooksey Marcin, PLLC
- Hole #12 Acuity Blue Productions
- Hole #13 Neighborhood Credit Union
- Hole #14 The Pallet Company
- Hole #15 Mr. & Mrs. Eddie Shell
- Hole #16 TW Oilfield Services
- Hole #17 Preferred Primary Care
- Hole #18 Texas Decorated Apparel

Brother II Brother Ministry



SHILOH

MISSIONARY BAPTIST CHURCH

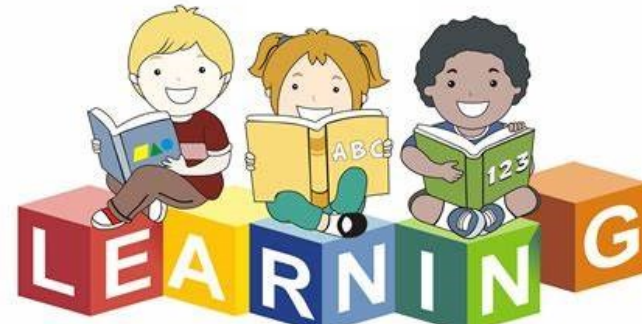
Where Community Becomes Family

920 E. 14th St. | Plano, Texas 75074

***Congratulates
Plano Child Care Learning Academy***



The



**— Place —
Of Excellence**

Thanks for Serving Our Community!



You are invited to attend

OUR 41ST ANNIVERSARY GALA

SAVE THE DATE

10.29.22 • 6PM

COLLIN COUNTY COLLEGE
SPRING CREEK CAMPUS

FOR MORE INFORMATION CONTACT US
AT INFO@PLANOCF.COM

SPONSORS - DONORS

Mickel & Natalie Sawyer
Richland Real Estate
Mildred & Ricky Smith
Wanda Rhodes
Brenda Mays
Dewey & Dedra Minor
Douglass Community Seniors
Lela & Joel Brissett
Don & Angela Sims
Marzell Howard
Linda Smith
James Young
Sarah McMillion
Diana Dues
Caroline Howard
Ana Blake
South Carolina State University National Alumni Association DFW Chapter
Mignon Moore

SPONSORS - DONORS

Timothy & Frances Emily

Sherrie Young-Johnson

Brenda Page

Rudy & Doris Williams

Breanna Moss

Margie Young

Robert & Royla Gossett

Diane Elmore

Erwin McKinney

Gerald Young

Angel McCullough

Steven Dues

Henry Dues III

“Giving back involves a certain amount of giving up.”

Colin Powell

Theresa Burkhalter

Fred Draper

Lott's Electrical Supply



At AzulCourt Properties, LLC, our team is highly motivated, knowledgeable, ethical and resourceful. Qualified to handle any real estate transaction, our dedicated staff is committed to helping people with their real estate needs and making successful deals happen. Our team of professionals have the integrity to follow up on our promises, and the expertise to navigate any transaction to ensure you're fully informed for making the best decision possible.

Courtney Lloyd
Manager

Bernard Lloyd
Realtor

A Real Estate Solutions Company

www.AzulCourtProperties.com

Congratulations

Carolyn Evans

and

The Plano Child Care Learning Academy

Citizenz for Children:
Reaching Back and Giving Back

Tracy Hamilton & Jacqueline Hatchett

amazonsmile You shop. Amazon gives.

- Support Plano Child Care Learning Academy by starting your shopping at **smile.amazon.com**.
- AmazonSmile is the same Amazon you know. Same products, same prices, same service.
- Choose the Plano Day Care Center as your charity. Amazon will send a percentage of your purchases directly to them.

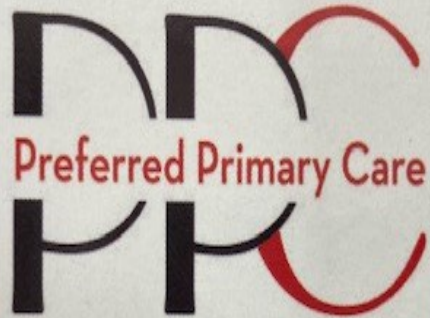
Spread the word to your family and friends!

Join us for an 18-hour giving extravaganza to benefit our local non-profit and make a difference for our children at Plano Child Care Learning Academy, formerly known as Plano Day Care Center.

Make your donation on September 22

If you're interested in contributing – and we hope you are – it's really simple. All it takes is 4 steps: Wake up, access your computer, go to NorthTexasGivingDay.org and search for The Plano Day Care Center, and then donate! Donations can start at \$25, and the limits are endless.

— 9.22.22 —
COMMUNITIES
FOUNDATION of TEXAS
— NTX —
GIVING
DAY presented by
amazon



"WHERE WE TREAT YOUR FAMILY LIKE OURS"

1999 FOREST RIDGE DR
BEDFORD TX, 76021

T-682-738-3158
F-682-738-3111

Dr Munawar Haider MD
Dr Elmer Smith MD
Danielle Davis NP
Leslie Kipp NP
Kayleigh King NP



ANA M. BLAKE, CPA
CERTIFIED PUBLIC ACCOUNTANTS
801 E. Campbell Rd
Suite 280
Richardson, Texas 75081
(972) 371-2421
FAX (972) 371-2422
Email: anamblake@att.net
www.anamblakecpa.com

52

***Years of Excellence
Early Childhood Education***

Congratulations to Plano Child Care Learning Academy



IT'S ALL ABOUT THE FISH

Fantastic Grilled, Boiled, and Fried Seafood in a Casual Oyster Bar Setting



Plano Location:
**700 East 15th Street
Plano, TX 75074**
Ph: 469-229-0838
Fax: 469-229-0848

Richardson Location:
**1840 N. Plano Rd
Richardson, TX 75081**
Ph: 972-238-7106
Fax: 972-238-7113

You Gave Me Wings and Made Me Fly!



Laura M. Smith ~ Sunset: January 26, 2018

Shirley Young-Shell

**Congratulations Plano Child Care Learning Academy on
52 years of service to the Douglass Community**

Congratulations PCCLA



Ye Ole Butcher Shop

Meat Market & Burger Joint Smokin Good since 1974

811 E. 15th St.
Plano, TX 75074
[972-423-1848](tel:972-423-1848)
Closed Mondays
Tuesday-Wednesday
9 a.m. to 3 p.m.*
Thursday-Friday
9 a.m. to 6 p.m.*
Saturday
9 a.m. to 5 p.m.*
Closed Sundays
*Grill is off 30 minutes
before close

Jeff Sparks has been catering to your desires to serve and prepare only the finest cuts of meat for you and family for nearly four decades. We welcome you to our family of friends and look forward to serving your needs for the finest cuts of meat on the market.

Call in your order we'll have it ready to go.

Tues/12 Pt Buck Burgers

Wed/Elk Burgers

Thurs/Wild Hog Burgers

Friday/Ribeyes & Fries

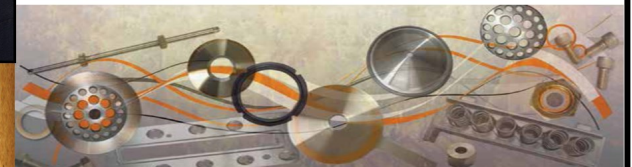
*Voted Best Burger in
Plano*

TW
OIL FIELD SERVICES



WINFRED TUBBS
OWNER

DISTRIBUTOR OF
ORIFICE VALVE REPLACEMENT PARTS
UNIVERSAL ORIFICE PLATES
PADDLE ORIFICE PLATES
FLOW CONDITIONERS
SEAL RINGS



CONGRATULATIONS

Plano Child Care Learning Academy



ALL THINGS BY GRACE
REAL ESTATE GROUP
Grace Singleteary
469-877-5918

kw CENTRAL 75
KELLERWILLIAMS. REALTY

When your lifestyle changes because the kids moved out or you need more space... call Grace

Buying, Selling, Investing, Renting

(Apartments, Houses, Condos, Townhouses, Commercial Leases)

Dedicated to Enhancing Your Lifestyle!!!

**CONGRATULATIONS PCCLA
ON 52 YEARS OF
EDUCATIONAL EXCELLENCE!**



**THE HONORABLE ANGELA TUCKER
199TH DISTRICT COURT
COLLIN COUNTY, TEXAS**

IN LOVING MEMORY OF
HARRY & DONNA OSTROM



*Time Passes,
Memories Stay
Loved And
Remembered
Everyday*



**Scott & Tekla Mann
CONGRATULATES
Plano Child Care Learning Academy
on 52 years of Service!**

GOT PAIN?

WANT A CHANGE?

GOT A SOLUTION!

OXZGEN

Powered by CBD

THC FREE

Contact me for free sample

Catherine Harvey

214.218.6021

For more information go to:

kuolcat.info or

oxzgen.com/L156589





Saluting Plano Child Care Learning Academy for 52 Years of Service



NABVETS: Veterans helping all Veterans, their families and communities across America

Dallas / Ft. Worth Chapter # 0106

Ch. Cmdr. Van Gilmore | nvgilmore@yahoo.com
2580 W. Camp Wisdom | Suite 100, Box 112
Grand Prairie, TX. 75052 | (214) 500-2648

DFW Focus

- ◆ Developing affordable permanent housing for all low-income Veterans and non-veterans, partnering with Tiny Housing project
- ◆ Providing support for youth development in the community, working with various local high schools Junior Reserve Officer Training Corps youth
- ◆ Working in unity with the community and other non-profit agencies to end homelessness, empower low-income and minority Veterans and working with disadvantaged youth

Members Wanted

The benefits of being a NABVETS member are many. In addition to the camaraderie from fellowship with other Veterans and knowing that there are other Veterans who share your passion for giving back to the community and helping other Veterans, NABVETS offers members a broad range of benefits. Join us in helping fellow veterans.



Heavenly Gate
Funeral Services



Tim Jefferson
Funeral Director



It's not your standard funeral home...
It's the new standard in funeral homes.

Affordable Funerals & Creations • Pre-Arranged Insurance for all Ages
Headstones & Monuments • Floral Arrangements for all occasions

702 Gatewood Road □ Garland, Texas 75043
Office: 972-240-2121 Fax: 972-240-2121
www.heavenlygatefuneralservices.com

Our experienced and compassionate staff of funeral directors and family service specialist assist every family to create a meaningful "Life Celebration" that is dignified.

Every life is unique. Every funeral should be too. Our funeral directors will work closely with you to ensure your loved one's service exceed your expectations.

Tim Jefferson

The Tassel was Worth the Hassle!

WAY TO GO, PCCLA!



Graduation Memories at PCCLA

Zeke loved the children!

