

# Seasonal Coffee



## PEPPERMINT MOCHA

Our house blend iced coffee, mixed with peppermint syrup and a dark chocolate sauce. Served with whipped cream and a candy cane topping

*M (16OZ) \$4.95*

*L (24OZ) \$5.45*

## CEREAL MILK ICED COFFEE

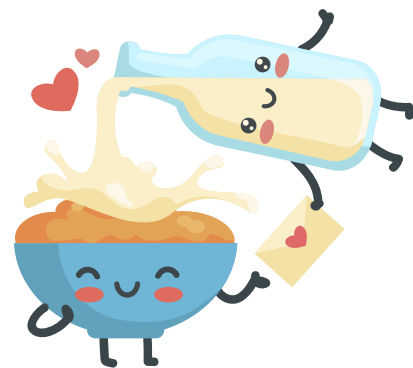
Our house blend iced coffee, poured over ice and mixed with cereal milk.

This week's cereal milk is:

Cinnamon Toast Crunch

*M (16OZ) \$3.95*

*L (24OZ) \$4.45*



## SUGAR COOKIE ICED COFFEE

An almond and buttery shortbread blend iced coffee, served over ice with vanilla almond milk

*M (16OZ) \$4.95*

*L (24OZ) \$5.45*

