



BREAKFAST

EGG SANDWICHES

*Egg sandwiches come on fresh Cassone hard rolls.
Substitutions are available at an additional price*

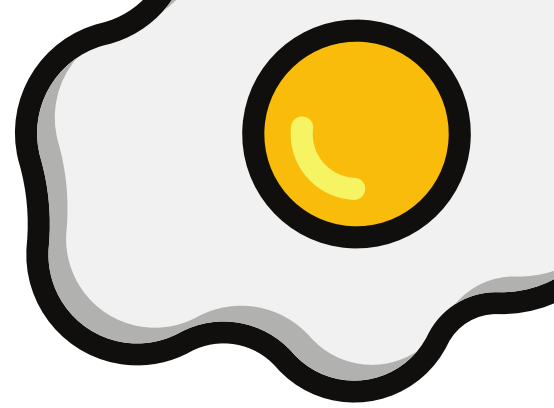
\$4.05	EGG
\$4.25	EGG & CHEESE
\$4.89	BACON, HAM, OR SAUSAGE, EGG & CHEESE
\$9.90	*ON A GRINDER
\$7.85	*IN A WRAP
\$5.20	STEAK, EGG & CHEESE
\$6.30	OMELET ON A ROLL
\$8.00	OMELET IN A WRAP

SANDWICH ADD-ONS

\$1.30	EXTRA EGG	\$1.30	EXTRA EGG	\$0.90	FRIED PEPPERS AND ONIONS
\$1.40	EXTRA MEAT	\$0.45	EXTRA MEAT	\$0.45	LETTUCE AND/OR TOMATO
\$0.85	EXTRA CHEESE	\$1.50	EXTRA CHEESE	\$1.50	ADD AVOCADO
\$1.30	ADD HOMEFRIES				

PLATTERS

\$7.75	2 EGGS SERVED ANY STYLE served with home fries, meat & toast
\$8.00	CHEESE OMELET served with home fries & toast
\$8.45	SINGLE (1) ITEM OMELET served with home fries & toast
\$9.20	GREEK, VEGGIE, WESTERN OR MEXICAN OMELET served with home fries & toast
\$7.20	FRENCH TOAST Three (3) slices, served with butter & syrup
\$6.05	SHORT STACK FRENCH TOAST Two (2) slices, served with butter & syrup



OMELET CHOICES

WESTERN: HAM, GREEN PEPPERS, ONIONS

MEXICAN MILD: TOMATOES, GREEN PEPPERS, ONIONS, PEPPER JACK CHEESE

MEXICAN HOT: TOMATOES, GREEN PEPPERS, ONIONS, JALAPENOS, CHEDDAR CHEESE

GREEK: TOMATOES, ONIONS, SPINACH, FETA

VEGGIE: PEPPERS, ONIONS, TOMATOES, BROCCOLI, SPINACH, MUSHROOMS

OR CREATE YOUR OWN

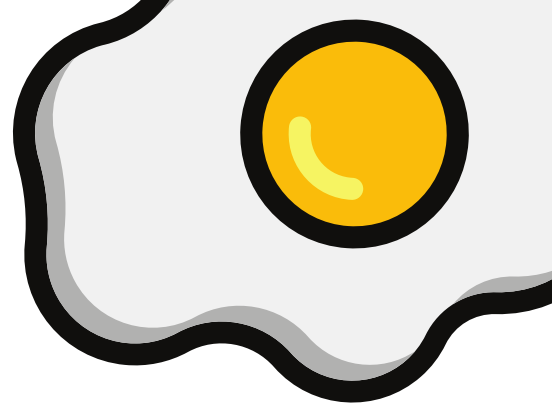
Call in your order at 203.371.0303
visit us at www.countrycowdeli.com



BREAKFAST

SIDES & BAKERY ITEMS

- \$1.65 TOAST
- \$4.15 SIDE OF HOME FRIES
- \$3.25 SIDE OF BACON OR SAUSAGE
- \$2.50 BAGEL, PLAIN
- \$3.45 BAGEL WITH CREAM CHEESE
- \$2.50 ENGLISH MUFFIN
- \$1.69 ASSORTED DAILY DONUTS
- \$2.50 ASSORTED DAILY DANISHES
- \$2.85 ASSORTED DAILY MUFFINS



COFFEE & TEA - HOT

House roast, available in regular, decaf, hazelnut, and French vanilla

Our teas include: Black, Decaf, Green, English Breakfast, English Tea Time, and Chamomile

- \$1.65 SMALL
- \$1.90 MEDIUM
- \$2.15 LARGE
- \$2.40 EXTRA LARGE

COFFEE - ICED

Our house roast, brewed extra strong and poured over ice.

Add a flavor for \$.50 - Available Flavors include: Hazelnut, French Vanilla, Caramel, and assorted seasonal offerings

Switch to non-Dairy milk for \$.50 - Oat Milk or Almond Milk

- \$3.00 MEDIUM (16OZ)
- \$3.50 LARGE (24OZ)

COFFEE - COLD BREW

A mocha java blend of beans, steeped for 24 hours in cold filtered water. The result is smooth and sweet.

Add a flavor for \$.50 - Available Flavors include: Hazelnut, French Vanilla, Caramel, and assorted seasonal offerings

Switch to non-Dairy milk for \$.50 - Oat Milk or Almond Milk

- \$3.50 MEDIUM (16OZ)
- \$4.00 LARGE (24OZ)

Remember to check online for updated seasonal coffee specials!

prices do not include tax and are subject to change without notice.

Food Safety Information: Thoroughly cooking meats, poultry, shellfish or eggs reduces the risk of foodborne illness