



# BREAKFAST

## EGG SANDWICHES

*Egg sandwiches come on fresh Cassone hard rolls.*

*Substitutions are available at an additional price*

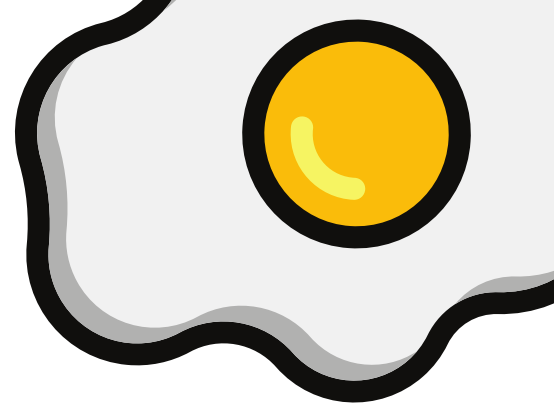
\$4.30	EGG*
\$4.50	EGG & CHEESE*
\$5.12	BACON, HAM, OR SAUSAGE, EGG & CHEESE*
\$10.40	*ON A GRINDER
\$8.35	*IN A WRAP
\$5.45	STEAK, EGG & CHEESE*
\$6.55	OMELET ON A ROLL*
\$8.50	OMELET IN A WRAP*

## SANDWICH ADD-ONS

\$1.30	EXTRA EGG*	\$1.90	FRIED PEPPERS AND ONIONS
\$1.40	EXTRA MEAT	\$1.45	LETTUCE AND/OR TOMATO
\$.85	EXTRA CHEESE	\$1.50	ADD AVOCADO
\$1.30	ADD HOMEFRIES		

## PLATTERS

\$8.25	2 EGGS SERVED ANY STYLE* served with home fries, meat & toast
\$8.50	CHEESE OMELET* served with home fries & toast
\$8.95	SINGLE (1) ITEM OMELET* served with home fries & toast
\$9.70	GREEK, VEGGIE, WESTERN OR MEXICAN OMELET* served with home fries & toast
\$7.60	FRENCH TOAST Three (3) slices, served with butter & syrup
\$6.45	SHORT STACK FRENCH TOAST Two (2) slices, served with butter & syrup



## OMELET CHOICES

WESTERN: HAM, GREEN PEPPERS, ONIONS

MEXICAN MILD: TOMATOES, GREEN PEPPERS, ONIONS, PEPPER JACK CHEESE

MEXICAN HOT: TOMATOES, GREEN PEPPERS, ONIONS, JALAPENOS, CHEDDAR CHEESE

GREEK: TOMATOES, ONIONS, SPINACH, FETA

VEGGIE: PEPPERS, ONIONS, TOMATOES, BROCCOLI, SPINACH, MUSHROOMS

\*OR CREATE YOUR OWN\*

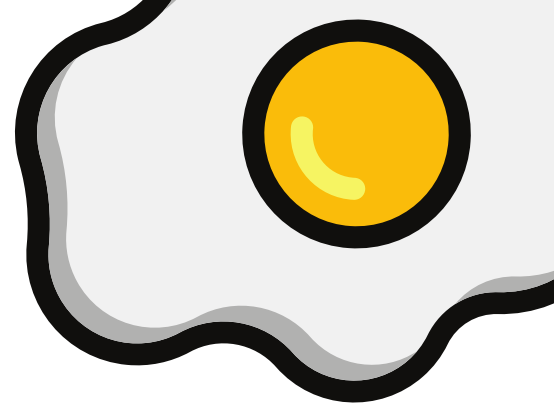
\*THESE ITEMS ARE COOKED TO ORDER. CONSUMING RAW OR UNDERCOOKED MEATS, POULTRY, SEAFOOD, SHELLFISH, OR EGGS MAY INCREASE YOUR RISK OF FOODBORNE ILLNESS, ESPECIALLY IF YOU HAVE CERTAIN MEDICAL CONDITIONS. BEFORE PLACING YOUR ORDER, PLEASE INFORM YOUR SERVER IF A PERSON IN YOUR PARTY HAS A FOOD ALLERGY



# BREAKFAST

## **SIDES & BAKERY ITEMS**

- \$1.65 TOAST
- \$4.15 SIDE OF HOME FRIES
- \$3.25 SIDE OF BACON OR SAUSAGE
- \$2.50 BAGEL, PLAIN
- \$3.45 BAGEL WITH CREAM CHEESE
- \$2.50 ENGLISH MUFFIN
- \$1.69 ASSORTED DAILY DONUTS
- \$2.50 ASSORTED DAILY DANISHES
- \$2.85 ASSORTED DAILY MUFFINS



## **COFFEE & TEA - HOT**

*House roast, available in regular, decaf, hazelnut, and French vanilla*

*Our teas include: Black, Decaf, Green, English Breakfast, English Tea Time, and Chamomile*

- \$1.65 SMALL
- \$1.90 MEDIUM
- \$2.15 LARGE
- \$2.40 EXTRA LARGE

## **COFFEE - ICED**

*Our house roast, brewed extra strong and poured over ice.*

*Add a flavor for \$.50 - Available Flavors include: Hazelnut, French Vanilla, Caramel, and assorted seasonal offerings*

*Switch to non-Dairy milk for \$.70 - Oat Milk or Almond Milk*

- \$3.00 MEDIUM (16OZ)
- \$3.50 LARGE (24OZ)

## **COFFEE - COLD BREW**

*A mocha java blend of beans, steeped for 24 hours in cold filtered water. The result is smooth and sweet.*

*Add a flavor for \$.50 - Available Flavors include: Hazelnut, French Vanilla, Caramel, and assorted seasonal offerings*

*Switch to non-Dairy milk for \$.70 - Oat Milk or Almond Milk*

- \$3.50 MEDIUM (16OZ)
- \$4.25 LARGE (24OZ)

*Remember to check online for updated seasonal coffee specials!*

\*THESE ITEMS ARE COOKED TO ORDER. CONSUMING RAW OR UNDERCOOKED MEATS, POULTRY, SEAFOOD, SHELLFISH, OR EGGS MAY INCREASE YOUR RISK OF FOODBORNE ILLNESS, ESPECIALLY IF YOU HAVE CERTAIN MEDICAL CONDITIONS. BEFORE PLACING YOUR ORDER, PLEASE INFORM YOUR SERVER IF A PERSON IN YOUR PARTY HAS A FOOD ALLERGY