

FIELD RECONNAISSANCE REPORT – MAY 30, 2023



SAND FLOWER SUBDIVISION

SEMI-ANNUAL FIELD INSPECTION



Massoud Rezakhani, CFM – Principal; and Robert Davies, PE CFM, PH, PMP – Sr. Consultant– MRC LLC
29830 N 78th Way, Scottsdale, Arizona 85266
Principal email: mrezakhani@mrcllc.net;
Office: 480-513-7263 | Principal - Direct: 602-317-4303 | Fax: 480-656-2304
Visit us at <http://www.mrcllc.net>

TABLE OF CONTENTS



MEMORANDUM – FIELD RECONNAISSANCE SUMMARY	1
SECTION I – MAP EXHIBITS	2
SECTION II – FIELD RECONNAISSANCE PHOTOGRAPHYS	6



Date: May 30, 2023

Location: Scottsdale, AZ

Attendees: Massoud Rezakhani and Devyn Ingwell with MRC LLC

The purpose of this field trip was to identify and document flooded areas and damage from storms occurring in the project area earlier this month. Prior to the actual field trip, an investigation of data readily available for the project area was conducted. Key areas observed in detail during the field reconnaissance ("recon") included the groundwater recharge facility, the fallow vineyard perimeter, and the Devil's Canyon alluvial fan apex.

Key findings include:

- Minimal presence of erosion/sediment movement along Stagecoach wash within the Sand Flower subdivision.
- The past storms during 2022-2023 did not get high enough to move a significant debris load throughout the watershed area we viewed.
- The riprap embankment along the stagecoach wash, as shown in **fig 3**, looks intact with no concerns at this time.
- The improved wash banks along the Stagecoach downstream face of Windmill Rd looks good and is of no concern. A short distance downstream of that location, a portion of the bank had a small bank failure, as shown in **fig 6**. It is not a concern but will keep an eye on it for the next inspection.
- The riprap (Gabion Basket) short wall along the property located approximately 100 ft from N 81st Street at 34894 N 81st St, as seen in **fig 26** and **fig 27**, was in a good condition; no loose rocks observed and it looked intact.
- As seen in **fig 28-33**: The rip rap along the embankment behind the properties 34894 N 81st St and 34858 N 81st St remain intact.
- We examined all the basins on foot and by vehicle, finding all to be in good condition with no appreciable erosion. The presence of overgrown vegetations and brush was noted in some basins with no concern to report. As observed, the outlets and inlets to the basins appear to remain free of debris and other materials that could cause blockage.

The following is a description of the route traveled through the course of our field visit:

At 11:45 am, Massoud and MRC staff entered the Stagecoach Wash off N. Windmill Rd, just south of E Arroyo Hondo Rd beginning the field reconnaissance. The conditions were as follows: clear skies, calm wind, and a temperature of approximately 94 Fahrenheit. The team traveled a total of 1,584 feet southwest following the basin, noting some overgrowth along the banks of the stagecoach wash. At around 1,540 feet the team traveled northwest off the basin, turning around, then following the same footsteps back. Further down southwest was explored where the team entered the same basin at N 81st St, initially entering on the northern side of the overpass, continuing approximately 300ft northwest, turning around and exploring the southern side. About 250 ft southeast of N. 81st street, the team moved about 50 feet east, to turn around and continue along the Stagecoach Wash. The team continued 800 ft along the Stagecoach Wash to turning around and following the same steps back, which ended the field reconnaissance for the wash.

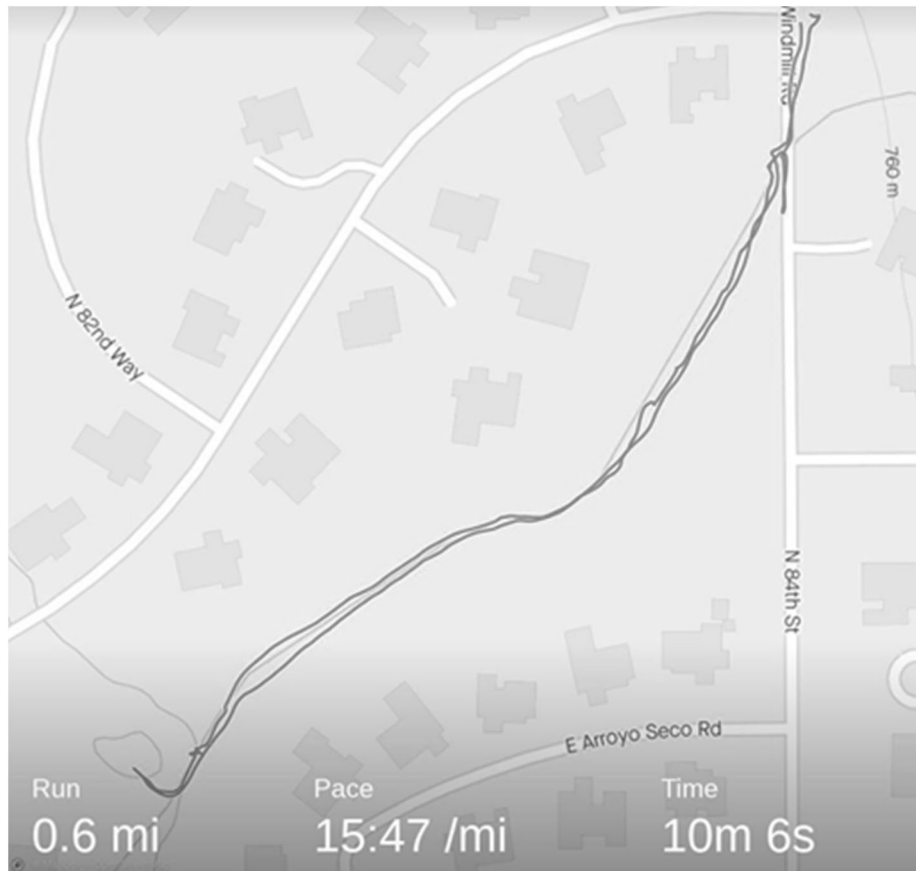
Please reference the post maintenance report for specific evaluations.

SECTION I

MAP EXHIBITS

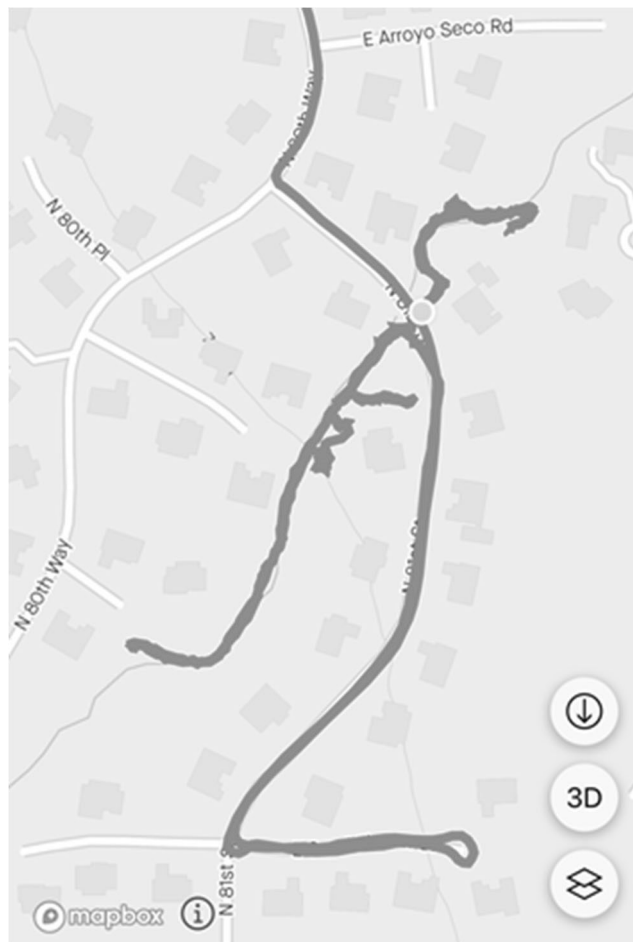
ROUTE TRACK TRAVELED
(MAPS 1 AND 2)

MAP 1 FIRST SEGMENT OF RECONNAISSANCE STARTING AT OFF N. WINDMILL RD, JUST SOUTH OF E ARROYO HONDO RD MOVING SOUTHWEST, TRAVELING APPROXIMATELY 1584FT.



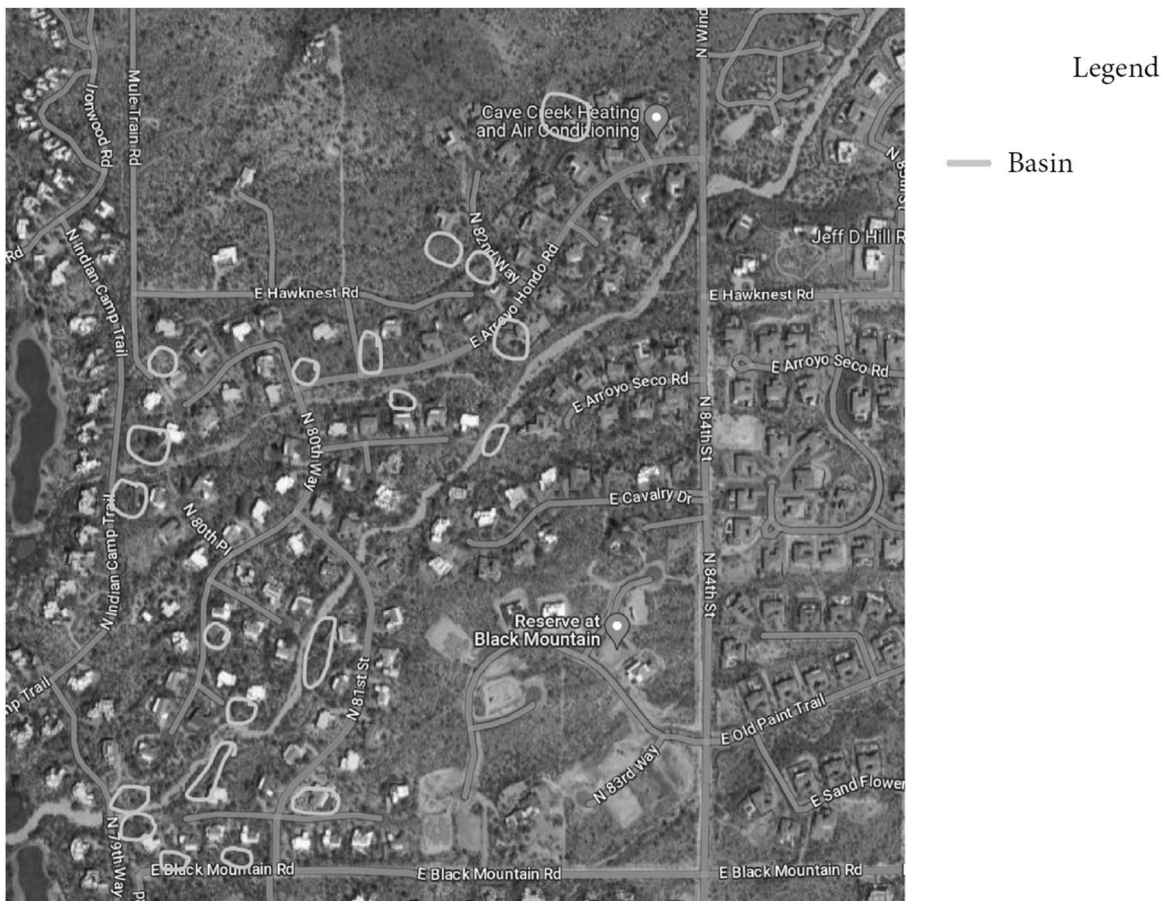
ROUTE TRACK TRAVELED (MAPS 1 AND 2)

MAP 2: SECOND SEGMENT OF RECONNAISSANCE ENTERED THE SAME BASIN AT N 81ST ST, INITIALLY ENTERING ON THE NORTHERN SIDE OF THE OVERPASS, CONTINUING APPROXIMATELY 300FT NORTHWEST, TURNING AROUND AND EXPLORING THE SOUTHERN SIDE VENTURING APPROXIMATELY 800 FEET UNTIL TURNING AROUND



NEARBY ROADS AND BASINS ALONG STAGECOACH WASH

MAP 3: MAP OF BASINS WITHIN THE SAND FLOWER SUBDIVISION



SECTION II

FIELD RECONNAISSANCE PHOTOGRAPHS



N Windmill Rd, In Between E Arroyo Hondo Road and E Hawknest Road



Figure 1: Looking East from N Windmill Rd, just south of E Arroyo Hondo Rd



Figure 2: Looking at the North side of the Stagecoach Wash. Facing East from N Windmill Rd

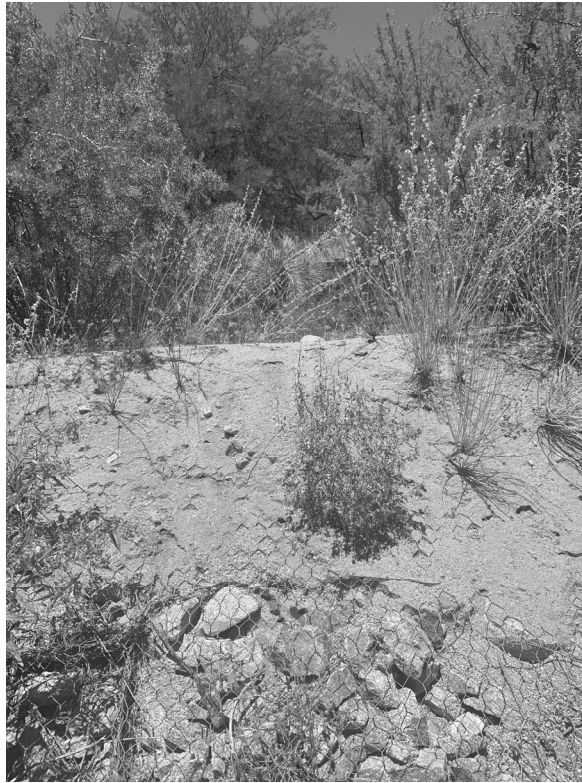


Figure 3: Facing north, intact structure observed.



Figure 4: Facing northeast, towards N Windmill Rd. Entrance to the Stagecoach Wash



Figure 5: Panoramic Facing North with N Windmill Rd on the right side of the photo



Figure 6: Facing south about 25 feet east of N Windmill Rd



Figure 7: Facing North about 25 ft east of N. Windmill Rd



Figure 8: Facing east, about 75ft from N Windmill Rd



Figure 9: Facing north about 75 ft from N Windmill Rd

N 81ST WAY AND E ARROYO HONDO RD



Figure 10: Facing West, just west of 81st



Figure 11: Facing West, just west of 81st.



Figure 12: Facing West, just west of 81st St.



Figure 13: Facing West, just West of 81st St.



Figure 14: Facing West, 20 ft East of 81st street on the southern edge of the Stagecoach Wash



Figure 15: Facing Southwest, 25 ft from 81st St. Waterways are clear of debris and brush.



Figure 16: Facing Northeast, 25 ft from N 81st St.



Figure 17: Facing Northeast, 50 ft from N 81st St.