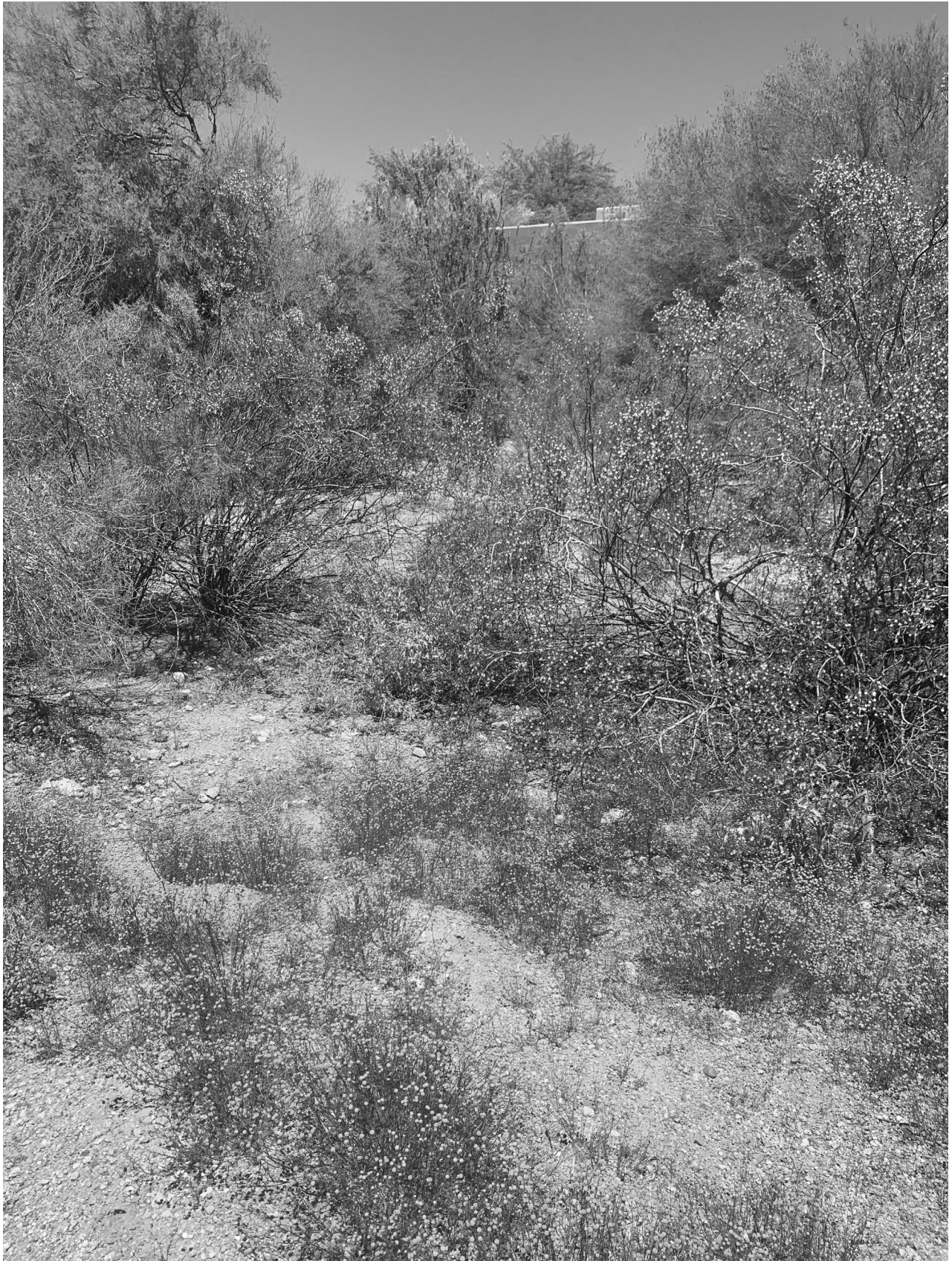




*Figure 18: Facing Northeast, 50 ft from N 81st St.*



*Figure 19: On Basin, 50 ft from 81st street, north side of the Stagecoach Wash*



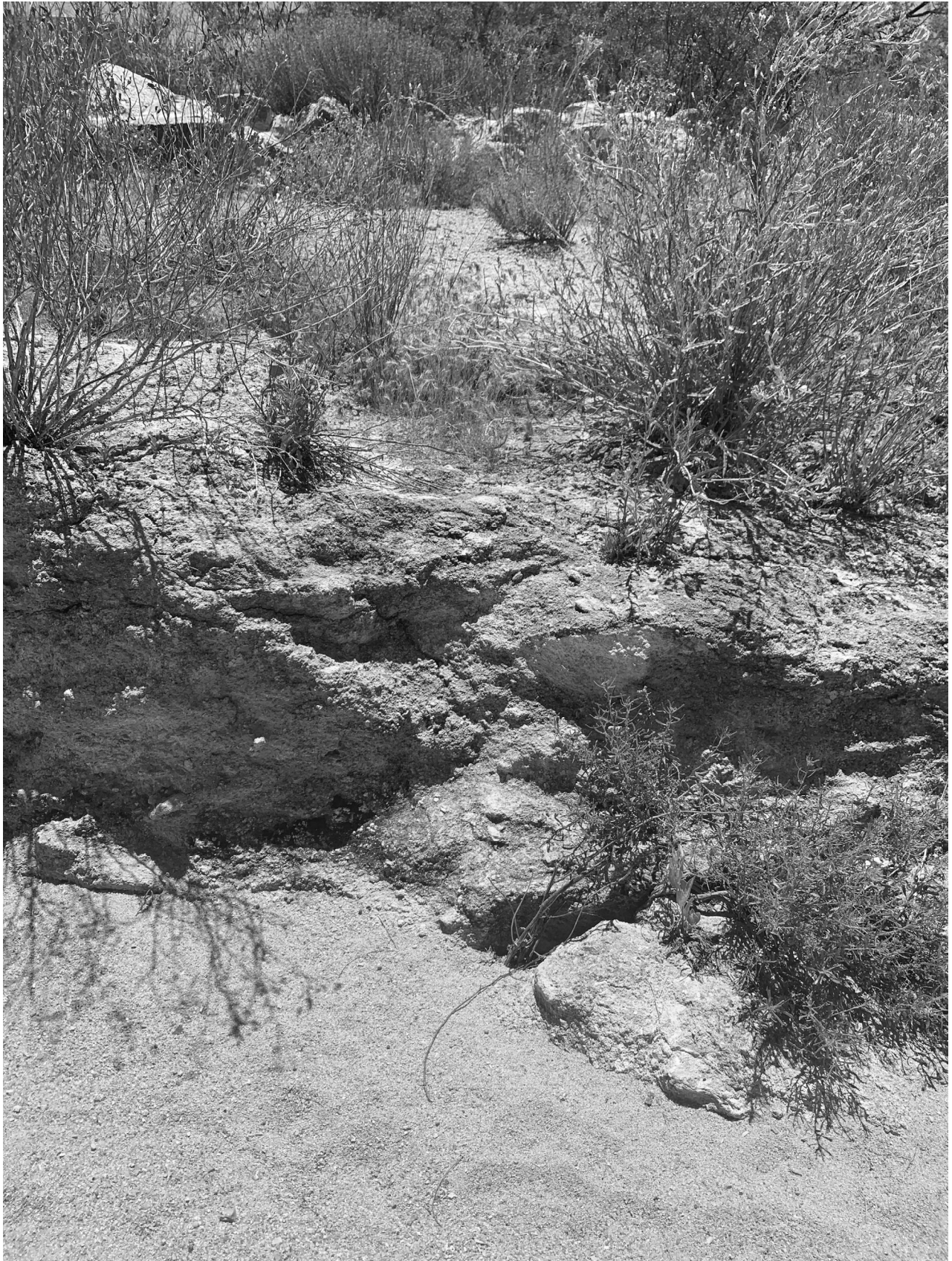
*Figure 20: Basin, 50ft from 81st St. North side of the Stagecoach Wash, facing north*





*Figure 21: Basin, 50ft from 81st St. North side of the Stagecoach Wash, facing north.*





*Figure 22: 75 ft Northeast of 81st St, facing Southeast.*



*Figure 23: 100 Ft Northeast of 81st street entrance*





*Figure 24: Just West of N. 81st ST facing northeast. Water ways appear to be clear of debris.*





*Figure 25: 25 ft Southwest of N.81st street facing Northeast.*



*Figure 26: Facing Northeast about 100 ft from N 81st St.*

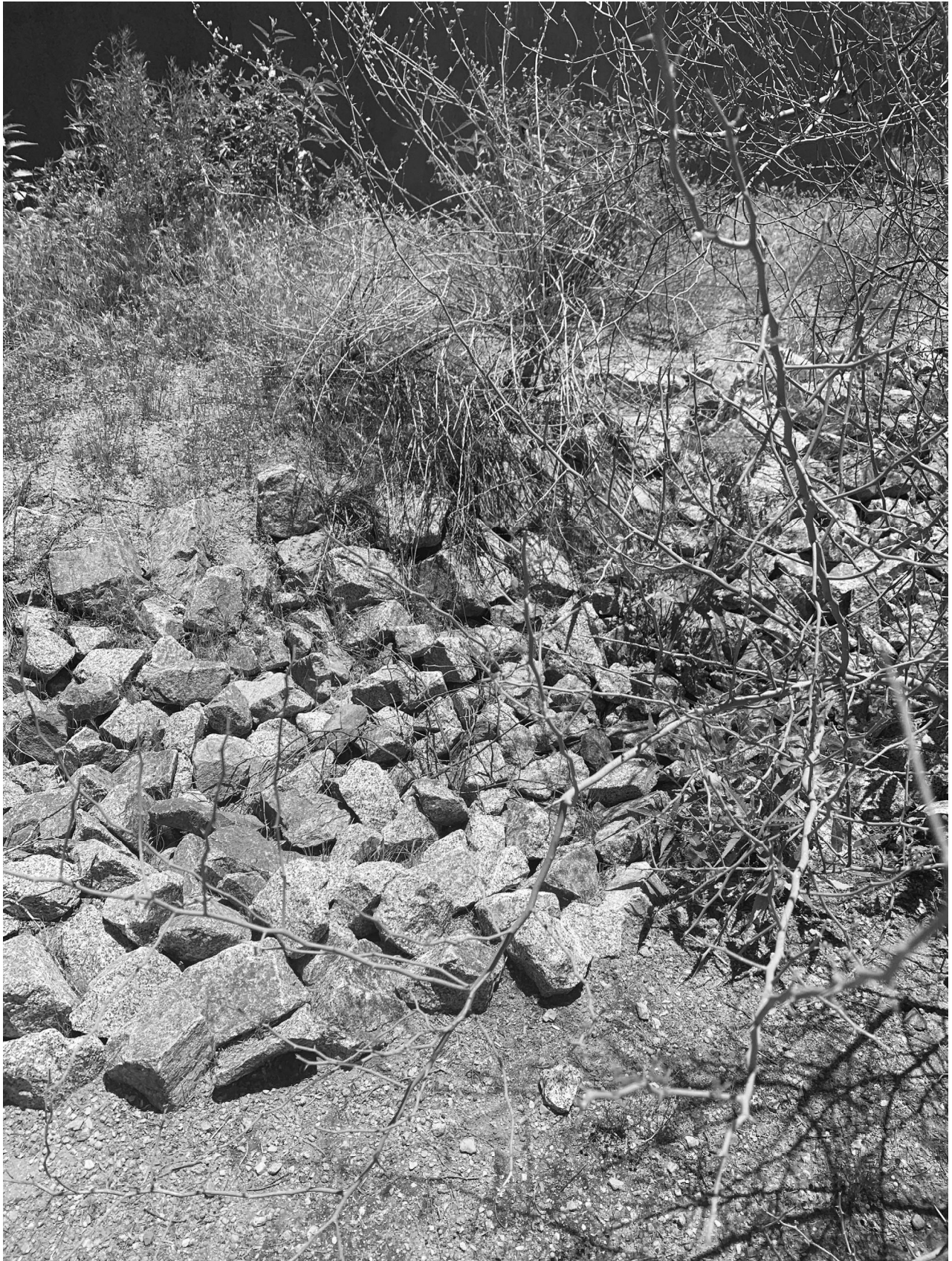


*Figure 27: Facing East about 100 ft from N 81st street; The riprap remains intact and not damaged.*

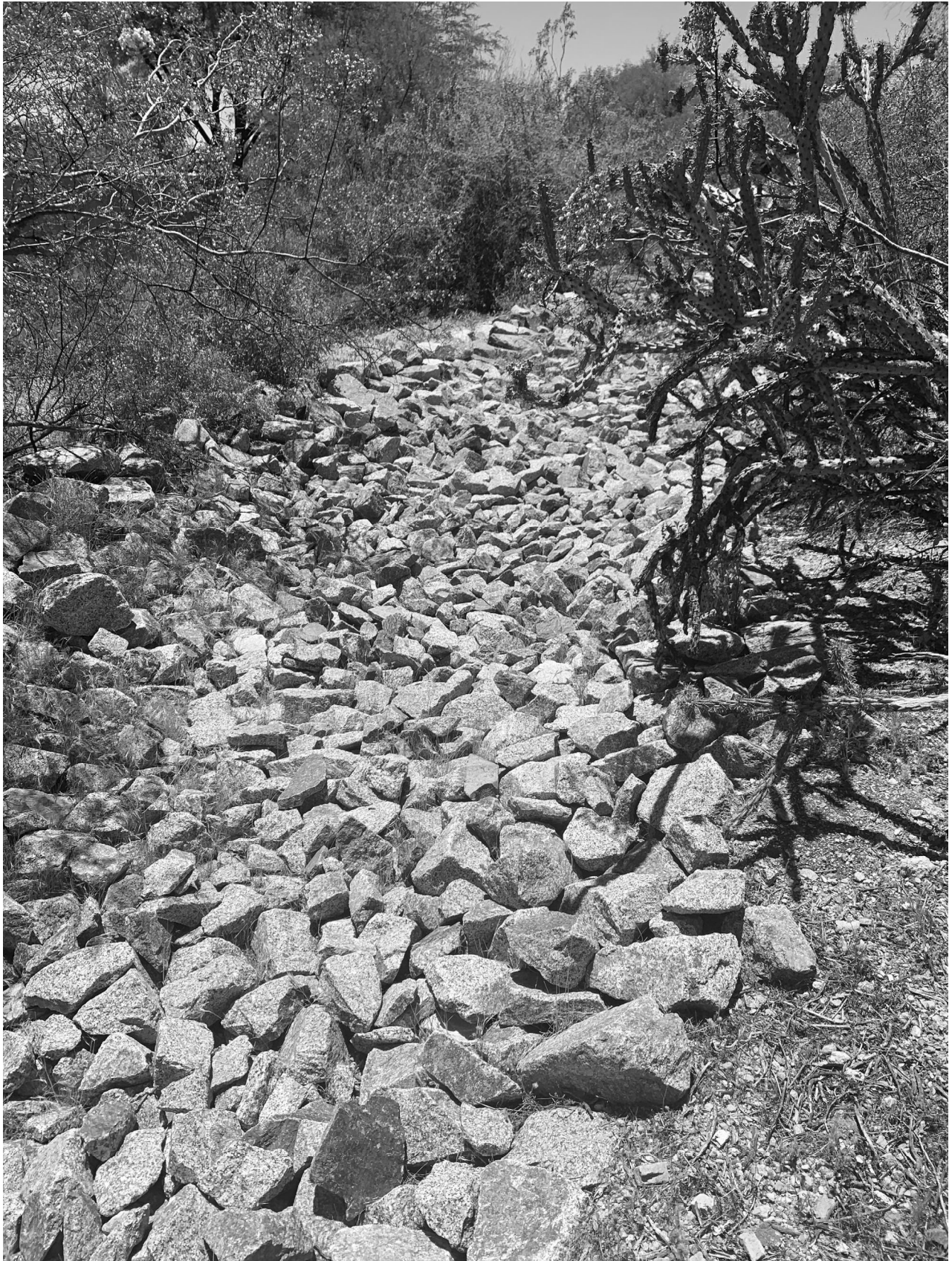


*Figure 28: 125 ft from N 81st street, Facing East*



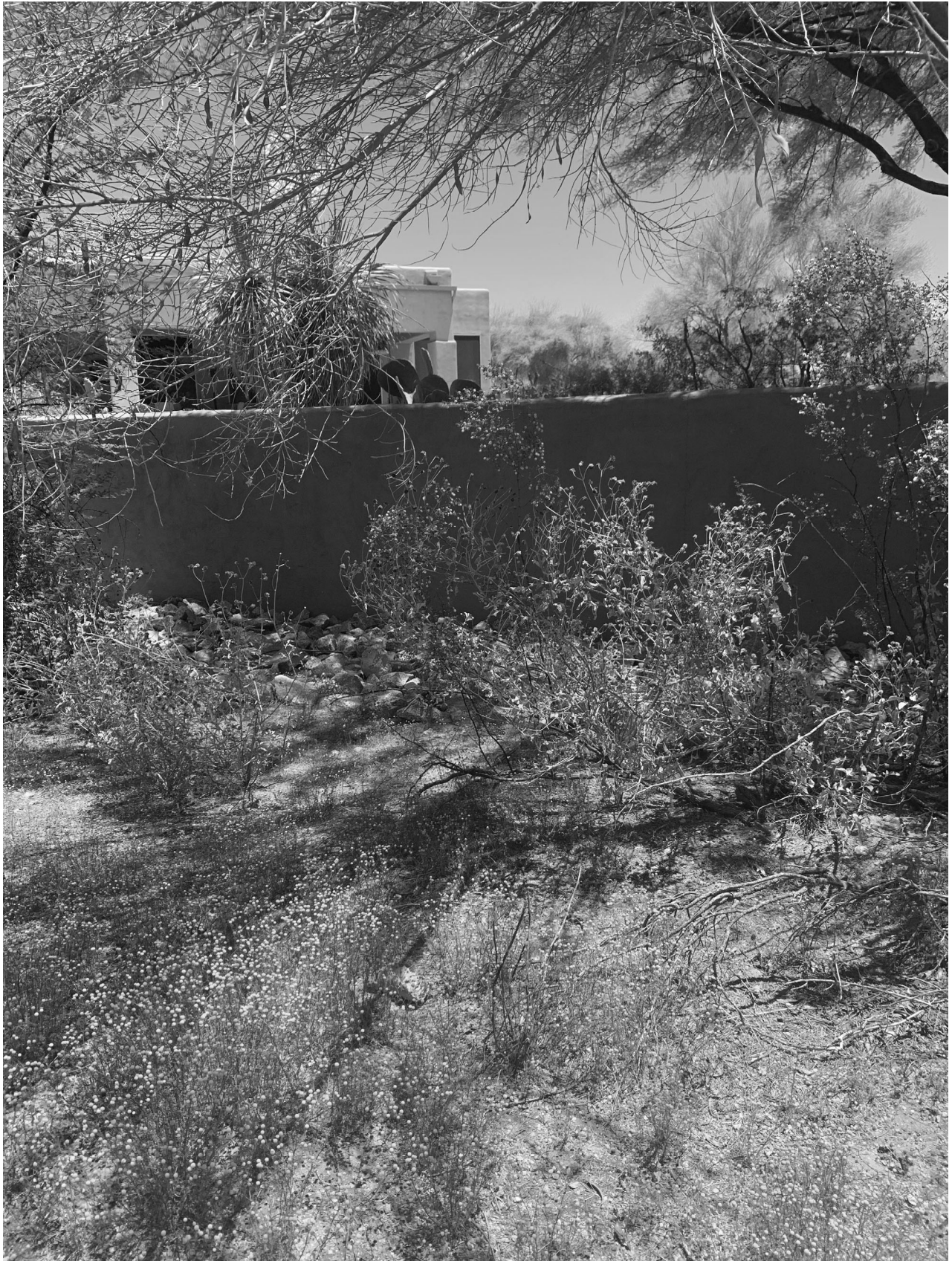


*Figure 29: 125 ft from N 81st street, Facing East*



*Figure 30: 125 ft from N 81st street, Facing South*





*Figure 31: 125 ft from N 81st street, Facing East*





*Figure 32: 200 ft from N 81st street, Facing East*



*Figure 33: 200 ft from N 81st street, Facing East*



*Figure 34: 250 ft from N 81st Entrance facing southwest.*





*Figure 35: 300 ft Southwest from N 81st ST, facing Southwest*