

2026 – Kathleen “Kathy” Dodd

Kathleen “Kathy” Dodd is a nationally recognized leader in home health care and one of the industry’s most accomplished executives. She founded The Corridor Group (TCG) in 1989 and, over more than two decades, grew it into a multi-million-dollar enterprise that shaped best practices in consulting, executive search, eLearning, and health care management. Following the sale of TCG to Health Edge Investment Partners in 2013, Dodd became Chairman Emeritus and Principal of The Corridor Group Holdings, LLC.



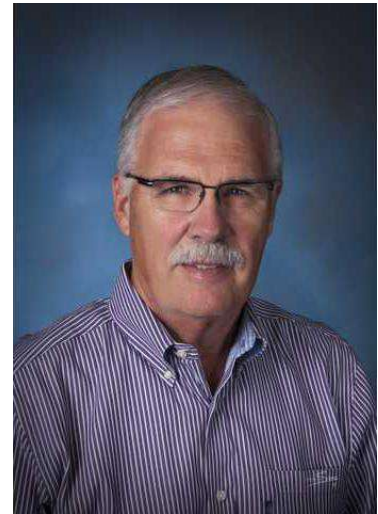
Throughout her career, Dodd has navigated the home care industry through regulatory challenges and economic shifts while maintaining a focus on “doing the right things right.” Her work extended internationally through Corridor International, which revolutionized home care delivery in Turkey and advised health organizations in the UAE. She has held leadership roles on numerous national boards, including the National Association for Home Care and Hospice, the Community Health Accreditation Program, and Park University’s Board of Trustees. A dedicated philanthropist, she founded Katy’s Place, a nonprofit supporting women and families affected by HIV, later merging it with the Truman Medical Center Charitable Foundation to enhance care. Dodd continues to mentor emerging leaders and provide strategic guidance to health and business organizations worldwide.

2026 - Lee Borck

Lee Borck is a Kansas agricultural leader whose vision and innovation helped modernize the cattle feeding and beef marketing industries. A lifelong Kansan, Borck earned his Bachelor of Science in Agricultural Economics from Kansas State University, where he later served as Chairman of the Board of Trustees for the K-State Foundation and led both its Executive and Investment Committees. His career reflects a deep commitment to advancing Kansas agriculture, rural enterprise, and education.

As Chairman of Innovative Livestock Services, Inc. and the Beef Marketing Group Cooperative, Borck pioneered new approaches to aligning cattle producers with retail markets, improving efficiency and product consistency from feedyard to consumer. A founding shareholder and Chairman of American State Bank in Great Bend, he also brought business acumen to the financial sector, supporting the economic vitality of rural Kansas communities. His leadership extended nationally as President of Cattle-Fax and the Kansas Livestock Association, and as a member of the Cattlemen's Beef Board and the National Cattlemen's Beef Board.

Honored as a Kansas State University Alumni Fellow and named to *Ingram's* "50 Kansans You Should Know," Borck was also inducted into the Cattle Feeders Hall of Fame in recognition of his decades of service and innovation in animal agriculture. Though now retired, his impact on Kansas agribusiness, education, and community leadership continues to resonate across the state and industry.



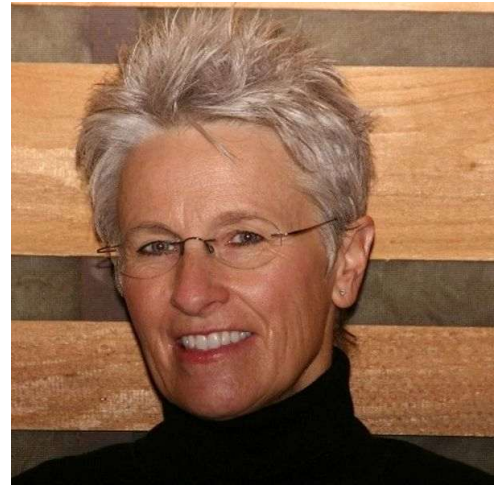
2025 - Marci Penner

Marci Penner has been one of Kansas's most influential champions of rural entrepreneurship, community vitality, and heritage preservation. As co-founder and executive director of the Kansas Sampler Foundation, Penner has spent decades strengthening small-town economies by promoting local businesses, inspiring grassroots leadership, and helping rural communities tell their stories in ways that attract visitors, investment, and pride.

Penner's work began with the vision developed alongside her parents on their Inman-area farm, where the Kansas Sampler evolved from a small local event into a statewide movement focused on sustaining rural life. Under her leadership, the Foundation built programs that have become cornerstones of rural Kansas; most notably the Kansas Explorers Club, the We Kan! awards, and extensive community fieldwork designed to help towns identify their assets and leverage them for long-term economic health.

A gifted communicator and researcher, Penner has co-authored multiple editions of *The Kansas Guidebook for Explorers*, an indispensable resource for travelers and Kansans alike. Her efforts have helped drive tourism dollars into rural businesses, from family-owned cafes to Main Street retailers, while raising statewide awareness of the cultural and economic value of rural communities.

Known for her collaborative approach and tireless advocacy, Marci Penner has left a lasting, measurable impact on the Kansas economy. Her work has empowered hundreds of towns, strengthened local entrepreneurship, and helped ensure that rural Kansas remains vibrant, visible, and vital for future generations.



2024 - Yolanda and Gene Camarena

Gene Camarena, whose company La Raza Pizza, Inc., is currently one of the 150 largest Hispanic-owned businesses in the nation, grew up on the predominantly Hispanic and African American north side of Salina, Kansas, in the late 1950s and 1960s. His grandmother migrated to the area from Mexico at the turn of the century, worked as a housekeeper and a cook, and saved her earnings to buy small neighborhood houses, giving one to each of her eleven children as they married and started families of their own. She sent each of her children to college, with the stipulation good grades must be maintained to remain in school. Gene's mother grew up in an orphanage, finished a sixth-grade education, and as an adult started one of Salina's first community centers, which included a library, a food bank, and a clothing closet. Gene's father held undergraduate and graduate degrees. Growing up in this culture, Gene was instilled with the values of holding family as priority and of obtaining an education.



After graduating high school, Gene entered the University of Kansas to pursue pre-medical studies; however, during his second semester in a challenging chemistry class he realized the sciences were not his interest or strength. He graduated from KU in 1979 with a degree in accounting and finance and began an auditing job in Wichita, Kansas. While in Wichita, he met and then dated his future wife, Yolanda, a graduate of Wichita State University. As Gene analyzed business profit/loss statements in his accounting job, a yearning grew to start his own business. To be near Yolanda, who held a position as Associate Director of graduate programs at Harvard's John F. Kennedy School of Government, and to fill a knowledge gap, he applied and was accepted into the competitive Harvard School of Business, completing a master's program.

The couple, now both with their graduate's degrees, left Cambridge, Massachusetts, and returned to Wichita. Gene took a job with Don and Frank Carney's Pizza Hut Corporation as manager of acquisitions, repurchasing franchises and other businesses. In 1991, Gene left his managerial position and became a franchise owner, purchasing eight poorly performing Pizza Hut restaurants in the panhandle of Texas. Following core principles of keeping a thorough budget for all expenses, maintaining a conservative debt to revenue ratio, treating employees like family, and promoting from within, Camarena expanded his business to twenty Pizza Hut restaurants in three years. In 1995, Camarena entered the hotel industry, opening a Marriott Fairfield Inn in Las Cruces, New Mexico. Camarena's diversified portfolio includes restaurants in three states, multiple Marriott franchises, real estate and banking holdings, along with a recent capital investment in a semi-truck parts supply company.

The couple generously support with their time and money the Wichita community, where Gene jokes he is known as Yolanda's husband. Awarded an honorary doctorate in 2015 by Newman University, Yolanda currently serves on the Board of the Kansas Hispanic Education and Development

Foundation, as Chair of the Schools and Scholarship Committee of Harvard College, and on Board of the Wichita Community Foundation. He works with at-risk middle school students, teaching them life and business principles and funding college scholarships. Gene regularly shares his business acumen with students at Wichita State University's Center for Entrepreneurship, advising them to "stay in your lane," do the business you know, and find a partner who complements your strengths and weaknesses. Gene currently serves on the Wichita board of Big Brothers Big Sisters. In 2020, the Camarena's gifted Wichita State University one million dollars to in part provide students of color educational scholarships.

Yolanda and Gene support with donations the Adelante Annual Scholarship fund at Butler Community College. In 2013, they were inducted into the Fran Jabara Entrepreneurship Hall of Fame and in 2019 were recognized by the Wichita Business Journal with the Outstanding Philanthropist Award for their exceptional civic responsibility and generous financial support in the community. The couple was named as the 2021 Wichita Business Hall of Fame laureates.

2023 - Carl Ice

Carl recently concluded a highly successful 42-year career with BNSF Railway, the largest freight railroad network in North America with more than \$20 billion in annual revenues and 35,000 employees. He was promoted through roles of increasing responsibility from his initial hire as an Intern to Executive Vice President of Operations and then to Chief Operating Officer following the \$44 billion sale of the company to Berkshire Hathaway in 2010. He eventually rose to lead all aspects of the organization as Chief Executive Officer in 2014 and was invited by BNSF to continue to serve on the Board of Directors after his retirement from executive duties in 2020.



Throughout his tenure at BNSF, Carl delivered consistent financial outperformance. He increased annual revenues by 64 percent from \$13.6 billion in 2009 to a peak of \$22.3 billion in 2019 while doubling the net margin. He improved return on invested capital (ROIC) from 9.1 percent to 15.2 percent during the same time period.

He also created a culture of resiliency and ensured the company's ability to adapt to changing market conditions. Under his leadership, BNSF was able to experience growth despite a contraction in the freight railway transportation market from 2014 to 2020 and to successfully offset a significant decrease in revenues derived from the transportation of coal by expanding the consumer products and agricultural freight businesses.

At BNSF, Carl recognized the importance of employee engagement and development at all levels of the organization. He championed a new leadership model and implemented the annual leadership development program for all managers, rolled out comprehensive training initiatives for the broader employee base, and achieved an unusually high employee retention rate with an average employee tenure of 13 years.

In addition to his many professional achievements at BNSF, Carl has made numerous contributions to the broader community. He serves as the Co-Chair of the Innovation Committee of the Salvation Army National Advisory Board and as the Chair of the Kansas State University Foundation. He was named "Outstanding Philanthropist" by the Dallas Chapter of the Association of Fund Raising Professionals in 2020, was recognized by the naming of the Carl R. Ice College of Engineering at Kansas State University in 2018, cited as "Distinguished Citizen" by the Longhorn Council/Boy Scouts of America in 2017, and lauded as "Railroader of the Year" by Railway Age Magazine in 2016.

Carl holds a Bachelor of Science in Industrial Engineering from Kansas State University from where he graduated summa cum laude. He also holds an Associate of Arts from Coffeyville Community College.

In June 2021, Carl was appointed to the Kansas Board of Regents by Governor Laura Kelly.

2022 - Joseph J. Bisogno

Joseph J. Bisogno is the founder of Goodcents Deli Fresh Subs. From a young age, Joseph was an entrepreneur, having owned his own ice cream truck at age 18 and having purchased a gas station and used car lot at age 22. After spending more than a decade with the McDonald's Corporation, he started Mr. Goodcents in 1989, opening his first restaurant in Lenexa. That franchised company today has more than 70 locations across the United States. Joe is also the owner of Custom Foods, a leading bread manufacturer, and has founded the Mr. Goodcents Foundation for Senior Citizen Independence, funding programs which provide curb-to-curb and face-to-face transportation services. Mr. Bisogno is also a supporter of Habitat for Humanity, The Children's Miracle Network, and the Leukemia Society of America.



2021 - Cliff Illig

“Figure it out.” “Slog away at it.” “What would Neal do?” Cliff Illig’s philosophies on processing complexity and getting things done are foundational in his many entrepreneurial ventures, most notably co-founding and leading the global healthcare information technology company, the Cerner Corporation, headquartered in the Kansas City metro area. As a teenager in the 1960s, Illig worked for his father’s company, loading punch cards, the forerunner of digital processing, into the business’s computers. At the same time, his school district began developing a computer programming curriculum, and at his Prairie Village, KS, high school, Illig took one of the first computer classes offered.



After graduating from the University of Kansas with a degree in accounting and business administration, Illig hired on with the accounting and consulting firm, Arthur Andersen & Co. In 1979, according to Cerner history, Illig and two co-workers, Neal Patterson and Paul Gorup, met at a local park and developed and wrote a business plan for a healthcare software company which would become Cerner Corporation. The trio left Andersen & Co. that year, landed their first client in 1980, an Oklahoma hospital, and took their fledgling company public in 1986. Cerner software technology automates clinical information and digitizes medical records to support and to readily connect healthcare providers with patient information. Before retiring in 2019, Illig served as Cerner’s Chief Operating Officer and as interim Chief Executive Officer after his partner Neal Patterson died in 2017. In 2020, Cerner’s revenue was over \$5 billion, and its employee associates numbered over 26,000.

Illig continues to own and manage, with his family, an array of business interests including real estate ventures and the Major League Soccer team, Sporting KC. He is founder and principal owner of FanThreeSixty, which helps organizations translate their fan data into creating new fan experiences and revenue growth. He serves on the board of Kansas City’s Stowers Institute for Medical Research. The Illig Family Enterprise Company supports and philanthropically funds “endeavors surrounding animal welfare, the well-being of children, building strong girls, and countering sexual assault.”

In 2019, Illig was inducted, along with Cerner co-founders Neal Patterson and Paul Gorup, into the Entrepreneur Hall of Fame and was named the Henry W. Bloch International Entrepreneur of the Year by the University of Missouri-Kansas City’s Regnier Institute for Entrepreneurship and Innovation.

Vigorously supporting a regional system which cultivates entrepreneurs; influencing local universities to develop relevant curriculums in advanced computing, cyber security, and artificial intelligence; and engaging the regional agricultural industry and community are part of Illig’s current focus.

2020 - Cecil L. O'Brate

Cecil L. O'Brate was born in Enid, Oklahoma, in November 1928. As a child growing up during the Great Depression, O'Brate experienced and recognized poverty, determining to change his fortunes and the fortunes of others. To provide for his family, he worked many jobs from ages 10 to 16, including newspaper delivery boy, grocery store stocker, and gas station attendant. Prior to his senior year of high school, O'Brate moved with his grandparents to Syracuse, Kansas, to custom farm 3,000 acres. By a year's end, O'Brate saved earnings for college and made two important discoveries: a passion for farming and a love for his future wife, Frances Cole.



In 1946, O'Brate returned to his native state to begin engineering studies at Oklahoma State University, working jobs to pay his tuition and other bills. Soon, an offer and plea for help from his Kansas grandfather, who leased an additional 3,000 acres, enticed him to leave OSU and return to farming. O'Brate's permanent move back to Kansas in 1948 began his legacy in business building. Putting his earnings back into land purchases beginning in 1953, O'Brate's current farm and grassland holdings number over 35,000 acres.

In 1965, with Garden City, Kansas, as his home and business center, O'Brate purchased the Palmer Manufacturing and Tank Company, which produces fiberglass and steel tanks for the oil and gas industry. Palmer Manufacturing, having grown from two to over two hundred employees with over \$70 million dollars in annual sales, was sold to Worthington Industries in 2013, but repurchased by O'Brate in 2018 with a pledge to invest \$16 million back into the plant for facility upgrades and to grow jobs.

During the late 1960s through the early 1980s, O'Brate purchased regional banks and opened farm equipment dealerships. While making sales to the oil industry through Palmer Manufacturing, he recognized money making opportunities in oil and gas drilling and production and heavily invested assets in the industry just months before the 1985 oil market crash. O'Brate persevered through the steep drop in oil prices, over seventy percent, and today owns several successful independent oil and gas companies, the two largest being Palmer Oil, Inc., and American Warrior, Inc., with 3,000 producing wells in 35 Kansas counties.

At age 91, O'Brate's resume currently lists part to full ownership in a 3D seismic oil and gas survey company, a sorghum-based food production company, ethanol production companies, a Garden City industrial park, and residential and commercial real estate development companies. Throughout his prosperous career, not forgetting his years in poverty, O'Brate has donated millions of dollars to nonprofit charitable and other organizations, including Big Brothers Big Sisters, the Boy and Girl Scouts, Youthville, Garden City USD 457, and Garden City Community College. In 2013, Carl and Frances O'Brate established the O'Brate Foundation, which provides emergency funds and college scholarships for students living below the poverty level and who are moving out of the foster care system.

O'Brate recently gifted his alma mater, Oklahoma State University, \$35 million toward construction of the school's new baseball stadium. The sports facility, which is scheduled to open in 2020, has been named O'Brate Stadium. OSU conferred an honorary doctorate on its former student and benefactor in May 2018.

2019 - H. Lee Scott, Jr.

H. Lee Scott, Jr. (“Lee”) was born in 1949 and raised in Baxter Springs, a town proudly proclaimed as the “First Cowtown in Kansas.” The son of a gas station owner, Lee graduated from Baxter Springs High School in 1967 and continued his education at Pittsburg State University in southeast Kansas. It was during this time in Pittsburg that Lee would meet his future wife, Linda Aldridge, a native of Kansas City. While attending Pittsburg State, Lee, Linda, and their infant son lived in the Lone Star Trailer Court, with Lee working at the McNally’s manufacturing plant and on campus in order to make ends meet. It is this same, Kansas-born work ethic, drive, and dedication to core values that would serve Lee Scott so well later in his career.



After graduating from Pittsburg State in 1971 with a B.S. in Business, Lee gained employment in nearby Springdale, Arkansas with Yellow Freight, one of the most rapidly expanding freight companies in the country at that time. As a salesperson and manager with Yellow Freight, Lee had his first encounter with Wal-Mart and David Glass, who would later become CEO of Wal-Mart and Chief Executive Officer of the Kansas City Royals. Lee was sent by Yellow Freight to collect an unpaid \$7,000 invoice and was subsequently offered a job by Glass. Staying true to his Kansas-born values of honesty and integrity, Lee responded to Glass by saying, “I may not be the smartest man who ever came into your office, but I’m not quitting a job with the fastest growing freight company in the nation to take a job with a company that can’t pay a \$7,000 bill.” Fortunately, Mr. Glass was persistent and repeated the offer two years later. This time, Lee accepted, beginning an illustrious 25-year career with Wal-Mart.

After joining Wal-Mart as the Assistant Director of Transportation, Lee began to work his way up the corporate ladder, assuming the positions of Director of Transportation, Vice President of Transportation, Vice President of Distribution, and Senior Vice President of Logistics. In 1993, Lee was promoted to Executive Vice President of Logistics and became a member of Wal-Mart’s Executive Committee. Later, in 1999, he became an office board member of the retail giant. These accomplishments and honors were undoubtedly due to the same work ethic and Midwestern values that Lee observed at his father’s gas station in Baxter Springs and the same drive that provided for his family while residing at the Lone Star Trailer Courts in Pittsburg.

Lee Scott’s contributions to corporate development and improvement did not go unnoticed by Wal-Mart’s board. In January of 2003, he was named President and CEO of Wal-Mart Stores, the largest company, by sales, in the history of the world. Perhaps even more impressively, Lee was just the third person chosen to lead the company, following only founder Sam Walton and David Glass, the same man who years earlier could not pay Wal-Mart’s \$7,000 bill but offered Lee a job. As CEO, Lee made many contributions to corporate operations, human development, and environmental sustainability. During Lee’s time as CEO, company-wide sales increased faster than inventory levels, a testament to his professional expertise and management skills. Although Wal-Mart experienced solid growth and profits throughout Lee’s tenure as CEO, his contributions to renewable energy

usage, minimum wage growth, and environmental sustainability are what truly set him apart as a CEO, leader, and Kansan. Evidence of this dedication to long-term sustainability is no more apparent than in his 2006 plan to invest \$500 million dollars annually in technology to reduce greenhouse gas emissions at existing stores around the world by 20%. This same plan, endorsed by former Vice President Al Gore and countless other business leaders, shows Lee's focus on how the world's largest retailer could make the world a better place.

Following his formal retirement in 2009, Lee Scott continued to use his success in business by giving back to the area that was so instrumental in laying the foundation for his illustrious career. After Pittsburg State University received a \$5 million donation from the Walton Foundation in honor of Lee's dedication and service to Wal-Mart, the Scott family gave more than \$2 million to create an endowment for the H. Lee Scott speaker series at Pitt State. This series of special events, entitled "An Examination of American Life," is designed to bring highly prominent leaders across the public sphere to Kansas and to enhance the experiences of students at Pittsburg State and across Southeast Kansas. Standing on the stage of the Linda and Lee Scott Performance Hall in the fall of 2015, Lee personally introduced the inaugural speaker, former U.S. President Bill Clinton. This marked the first time that a former president had spoken at his alma mater.

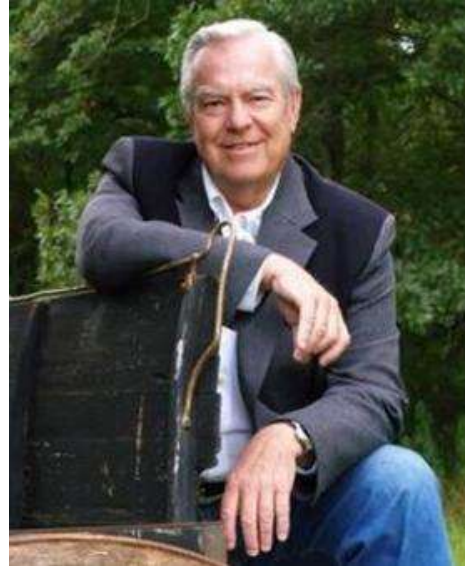
In 2018, Scott received the Horatio Alger Award bestowed upon "admired leaders who have succeeded despite facing adversities, and who have remained committed to higher education and charitable efforts in their local communities".

Lee Scott's significant contributions, first through his corporate successes, and later, through his philanthropic generosity, have greatly benefited the people of Kansas and clearly show that he is an exemplary product of the Sunflower State.

2018 - Bill Kurtis

Bill Kurtis was born William Horton Kurelich on September 21, 1940, in Pensacola, Florida. Kurtis' father was in the military which involved extensive travel for his family. Upon his father's retirement, the family settled in Independence, Kansas. He graduated from the University of Kansas in 1962 with a Bachelor of Science degree in Journalism. He went on to complete his Juris Doctorate at Washburn University in 1966. Kurtis served as an enlisted man in the United States Marine Corps Reserve and was commissioned a Lieutenant in the United States Navy Reserve.

Before transferring to the University of Kansas to study journalism, Kurtis attended Independence Community College in Independence, KS. Kurtis has not forgotten his roots, now owning a radio station in Independence and consistently marketing Independence through radio broadcasts.



While in law school, Kurtis worked as a television reporter in Topeka, KS, and lived through a defining moment involving an F5 tornado. Kurtis chose to give up his promising law career to work in broadcasting at CBS in Chicago. Kurtis quickly earned the respect of viewers and colleagues with his distinct, articulate way of speaking and his penetrating news pieces. Kurtis went on to spend several years working as a producer and anchor with Arts and Entertainment (A & E) Network.

Kurtis is best known for his work as a TV journalist and host of several network series including American Justice, Investigative Reports, and Cold Case Files. Kurtis expanded his horizons, working in films such as Anchorman: The Legend of Ron Burgundy and appearing in AT&T's "Sidecar" Netbooks commercials.

Today, Kurtis spends time around Sedan, KS – a rural town that Kurtis has helped grow and rejuvenate over the past several years. He has purchased and renovated old buildings in an attempt to attract tourism, turning aging buildings into donut shops, gift shops, and convenience stores. He also owns a 10,000-acre organic cattle ranch near Sedan called the Red Buffalo Ranch. Kurtis devotes much of his resources and time to improving rural towns in Kansas.

In addition to guest appearances on TV and radio, Kurtis now spends much of his time working with Tallgrass Beef Company, a company he founded in 2005 focused on the health and environmental benefits of organic, grass-fed beef. He is also the owner of Prairie Grass Café in Northbrook, Illinois. He has authored three books: On Assignment (1984), The Death Penalty on Trial: Crisis in American Justice (2004), and Prairie Table Cookbook (2008). He also lent his deep and distinguished voice to the 2004 news comedy The Legend of Ron Burgundy starring Will Farrell. Kurtis' commitment to conservation has led to serving on the board of directors for several organizations including The Nature Conservancy and the National Park Foundation.

2017 - Tom Devlin

Tom Devlin is recognized as one of the creators of the rent-to-own industry. He is the co-founder of Rent-A-Center, and the founder of Flint Hills National Golf Club, ranked the 49th best golf course in the country. He sold Rent-A-Center to Thorn EMI in 1987 for \$584 million. He also runs Devlin Enterprises, a private investment company that has several real estate investments including Flint Hills National Residences. Tom has been an active hunter and fisherman for most of his life. He is a member of Flint Oak from the early days and was recognized by Ray Walton as one of the founding members.



Tom is one of the founders of The Center for Entrepreneurship at Wichita State University, and Devlin Hall was “the first building in the world dedicated to entrepreneurship”. He is also involved in many other philanthropic opportunities around the country including Youth Entrepreneurs.

Devlin authored an autobiography in 2003 entitled *Playing Through* that focuses mostly on his experiences with Rent-A-Center, but includes more of his personal experiences outside the business.

Tom and his wife, Myra, still live in the Wichita area.

2016 - David Murfin

David L. Murfin is a long-time Kansas business leader and the chairman and CEO of Murfin, Inc., one of the state's most enduring family-owned enterprises. Based in Wichita, Murfin leads a diversified business group rooted in energy, industrial equipment, real estate, and financial services. The company traces its origins to 1926 with the founding of Murfin Drilling Company, a family-owned oil and gas exploration and drilling business that remains a central part of Murfin, Inc.'s operations.

Under Murfin's leadership, the company has expanded beyond its drilling heritage to include significant interests in Murphy Tractor and Equipment Company, one of the largest John Deere construction equipment dealers in North America, as well as commercial real estate holdings, local banking, and industrial service businesses.

A graduate of the University of Kansas with degrees in mechanical engineering and business, Murfin has also served on the Kansas Board of Regents and on advisory boards for the University of Kansas School of Business and Endowment. He is active in civic and economic development efforts in Wichita and across Kansas.



2015 - Gary Burrell & Min Kao

Gary Burrell, born 1937 in Stilwell, Kansas, is an American businessman, co-founder and chairman emeritus of Garmin, makers of popular Global Positioning System devices.

Gary Burrell co-founded Garmin Corporation with Dr. Min Kao in October 1989 with a handful of engineers and an idea for a product. Together with Dr. Kao, Burrell has led Garmin from a startup company to an international electronics powerhouse in several markets. This involved navigation devices for aviation and boating using the Global Positioning System. Their original office was two folding chairs and a card table. Some U.S. servicemen used Garmin GPS during the first Gulf War, even though Garmin never had a military contract. Later on, the technology was expanded for the U.S. market, providing directions across all United States roads and highways.



For his efforts, he has been recognized by Inc. Magazine, The Kansas City Business Journal and Ernst & Young as the “Emerging Entrepreneur of the Year” for Missouri and Kansas.

An industry veteran, Burrell brings more than 40 years of leadership at engineering-based companies to the helm of Garmin Ltd. Prior to his work with Garmin, Burrell served in various roles, including director of engineering and vice president of engineering at marine and aviation electronics companies, such as Lowrance Electronics, King Radio Corporation and AlliedSignal.

He is widely regarded as one of the leading innovators of integrated avionics, having designed and developed the first successful NAV/COMM for the general aviation market. Burrell earned his bachelor's in electrical engineering at Wichita State University and his master's from Rensselaer Polytechnic Institute.

Burrell, who stepped down as co-CEO in 2002, is chairman emeritus and the second largest shareholder, with a 14% stake in Garmin.

In 2007, Burrell ranked #114 on the Forbes 400 list of America's richest people. As of September 2013, his net worth was \$1.4 B. In 2014, his net worth was \$1.76 B.

He is married with three children and lives in Spring Hill, Kansas.

2014 - David Dillon

David Dillon is a Hutchinson native, born on March 30, 1951. He attended Hutchinson public schools and graduated from Hutchinson High School in 1969. He attended the University of Kansas where he received a bachelor's degree in business. He then went on to earn a law degree from Southern Methodist University in Dallas, Texas. After graduating from SMU, David returned to Kansas to work for the Dillon Company, a grocery store chain that his grandfather had founded, which had been acquired by Kroger Corporation in 1983.



In 1986, Dillon became president of the Dillon Company. From there he moved up, being named to the Kroger Board of Directors as President of Kroger Corporation in 1995. He became the Chief Operating Officer in 1996, was elected as Kroger's Chief Executive Officer in 2003, and was named Chairman of the Board in 2004.

Dillon is past chair of both Leadership Hutchinson and Leadership Kansas. He is a member of the Board of Directors of the Convergys Corporation, a company working to foster better employee-management relationships. He is the current Chairman of the Board of Trustees for the community group The Urban League of Greater Cincinnati. He is also on the Board of Trustees for the University of Kansas Endowment Association, the board of health-care provider Bethesda, Inc., and the board of Catalyst, an organization for the promotion of women in leadership.

Dillon was named the Leadership Kansas Alumnus of the Year in 1994, and in 1999, he received the Distinguished Alumni Award from the Kansas University School of Business. In 2003, he was the winner of the Cordell Williams Volunteer Leadership Award granted by the Urban League of Greater Cincinnati in recognition of his commitment to community enhancement. In 2008, he was honored by the University of Southern California, Marshall campus as Food Industry Executive of the Year. The Kansas Society of Washington, D.C. named Dillon 2008 Kansas of the Year for Dillon's "leadership in corporate citizenship...throughout his career, benefiting not just Kansas communities but neighborhoods across the country where Kroger's family of stores touch lives every day."

In 2007, Kroger Corporation led by Dillon partnered with customers, local media, the Red Cross and the Salvation Army to raise money to support the town of Greensburg, Kansas, after a tornado devastated the community in the spring. The Dillon's subsidiary of Kroger boosted efforts to draw people back to Greensburg when it announced that it would rebuild the Dillon's grocery store that had been destroyed. Not only would the store bring a normal supply of food and other goods back to the area, but it would also create jobs for those who had returned home.

2013 - Jack DeBoer

Jack DeBoer's career started in Kalamazoo, Michigan, when he began selling real estate during the summers while in high school. After graduating from Michigan State University with a degree in business in 1952 and following two years as a military police officer during the Korean War, he teamed up with his father to build homes in southern Michigan. By 1966, he was building apartments. By 1973, his company had built more than 16,000 apartments in 30 cities across 25 states. National Real Estate Investor magazine recognized DeBoer as the second-largest multi-family developer in the United States." But it is the concept of the "extended-stay hotel" and the creation of three iconic hotel brands that is DeBoer's biggest contribution to the hospitality industry.



With the founding of Residence Inn, followed by Summerfield Suites and Candlewood Suites, DeBoer is recognized as the pioneer of the extended-stay and all-suite hotel concepts. He designed and built the first Residence Inn, and all-suite hotel, in downtown Wichita, Kansas in 1975 and built or franchised 103 more properties before selling The Residence Inn Company to Marriott Corporation in 1987. In 1988, he co-founded Summerfield Hotel Corporation, a second-generation upscale all-suite hotel chain, which was sold to Hyatt. In 1995, he founded the Candlewood Hotel Company. After developing 130 hotels, Candlewood was purchased by InterContinental Hotels Group in December 2003. In June 2002, DeBoer used his extended-stay hotel model to create Value Place, a short-term apartment concept that continues to expand with more than 180 locations.

He also developed the Grand Champions Club, a world-class tennis facility and health club in Aspen, Colorado, where Maroon Creek Golf Course and residential lots were later added. In 1989, DeBoer and Bruce Huelat purchased Hix Corporation in Pittsburg, Kansas. Hix, whose products are sold worldwide, is the premier manufacturer of printing equipment, electric and gas dryers, and machines for the food industry. Today, DeBoer serves as Hix's chairman of the board. He also serves as chairman of Consolidated Holdings, Inc., which founded in 1989.

In addition to his many business ventures, DeBoer's belief in a life of significance led to his involvement with numerous business and civic organizations throughout his career. He is a past president of the Wichita Area Chamber, one of the founders of the Center for Entrepreneurship at Wichita State University, a trustee of Chatham Lodging Trust, and former chairman of the Board of Trustees of Youth for Understanding, the world's leading student exchange organization. DeBoer is also a former board member of the Wesley Medical Endowment Foundation and the Greater Wichita Community Foundation.

His contributions outside of his business interests have been recognized with numerous awards, including the Wichita Area Chamber's highest honor - The Uncommon Citizen Award - in 1992; induction into the Wichita Business Hall of Fame in 1997; UCLA's hotel industry Lifetime Achievement Award in January 2001; and Michigan State University's Distinguished Alumni Award in October 2001. In 2005, he received an honorary Doctorate of Humane Letters from Sterling College (Kansas). Within industry, he has been honored with the Lodging Conference coveted Above and Beyond Award and the Hunter Conference Award for Excellence and Inspiration. In 2012, DeBoer was inducted into the Hospitality Industry Hall of Honor at the University of Houston and was selected by the American Hotel and Lodging Association for the Lodging Inspiration Award. Most recently, he was recipient of the Contemporary Honor Award from the Kansas Business Hall of Fame.

Jack DeBoer also loves to fly. He is an active pilot and has flown the corporate aircraft as Captain. He currently holds the 3-kilometer world speed record for jet aircraft under 18,000 pounds. In 1988, DeBoer and his wife, Marilyn, completed a four-month-long trip around the world in his Gulfstream II. Their trip itinerary followed the history of man for the past 7,000 years, and they studied the needs of the world throughout their travels. From this experience, the DeBoers are now deeply involved in World Vision projects in Burma.

The DeBoers have two grown children and three grandchildren. Most recently, he authored a book titled Risk Only Money, all the proceeds of which benefit World Vision-Burma.

2012 - Greg Brenneman

Greg Brenneman is a small-town boy with a strong Kansas work ethic. A native of Hesston, Kansas, Greg graduated from Hesston High School in 1980. He received a Bachelor of Administration of Business in Accounting and Finance from Washburn University where he graduated summa cum laude. He also holds an MBA with distinction from Harvard. It is not his academic achievements that have brought him fame, however. He has gained a well-deserved reputation in the corporate world as a man who can turn troubled corporations around.



After graduating from Harvard in 1988, Brenneman joined Bain & Co. Inc., and helped resuscitate real estate powerhouses TrizecHahn and Trammel Crow. He made partner in four years, at the age of 31, and in 1993 landed a consulting position with Continental Airlines. His success with that assignment impressed Gordon Bethune, a former Boeing executive who was trying to rescue the then-troubled airline. Bethune convinced Brenneman to join Continental as CEO in 1995, and by 2001 the airline boasted a long list of accomplishments and awards and was ranked 18th on Fortune's list of the "Best Companies to Work For." In addition, during the period of Brenneman's tenure as CEO, Continental's stock price rose from \$6.25 per share to \$120 per share (pre-split).

In 2001, after six years at Continental, Brenneman returned to Turn Works Inc., a company he had helped found in 1994. Turn Works is a Houston-based private equity firm that focuses on corporate turnarounds. Turn Works principles undertake long-term assignments in companies with the goal of dramatically improving financial performance, delivering best-in-class products and services, and creating an environment where employees like coming to work.

In 2004, at the age of 42, Brenneman accepted the position of Chairman and CEO of Burger King Corp. Burger King's profits and market share had slipped dramatically in the year's preceding 2004 and the board of the privately held corporation felt that Brenneman might be able to turn things around. Within one year of Brenneman taking over as Chairman, Burger King enjoyed positive comparative sales, a 40 percent reduction in the cost of building a new restaurant, delivery of outstanding new products, award-winning advertising, dramatically improved service in the restaurants and a complete rebuilding of relationships with franchisees.

When asked the secret of his success, Brenneman acknowledges his educational background but often credits his upbringing in Kansas the true secret to his success. He believes Kansas instilled within him a strong work ethic. He has been quoted as saying, "I got more out of the farm than Harvard Business School."

Brenneman was appointed Chairman of CCMP Capital (Airmark, AMC Theaters, Quiznos, Francesca's, etc.) and a member of CCMP's Investment Committee in August 2008. He served as

executive chairman of the board of Quiznos, a national quick-service restaurant chain, from August 2008 to July 2010 and as president and chief executive officer of Quiznos from January 2007 to August 2008. He has been the chairman and chief executive officer of Turn Works, Inc., a private equity firm since November 1994. Brenneman also serves on the board of directors of Home Depot, Inc. and Automatic Data Processing.

Mr. Brenneman has been published in the Harvard Business Review and profiled numerous times in publications such as the Wall Street Journal, USA Today, Fortune magazine and Chief Executive magazine. A partial list of his many awards and recognition includes:

"Father of the Year," Houston Community Partners, August 2001

"Ten outstanding Young Persons of the World," Jr. Chamber of Commerce, November, 1998

"Ten Outstanding Young Americans," Jr. Chamber of Commerce, January, 1998

"Five Outstanding Young Texans," Jr. Chamber of Commerce, 1997

"Honorary Degree-Doctor of Commerce," Washburn University, May, 1999

"Kansas of the Year," Topeka Capital-Journal, January, 1999 and 2005

"Distinguished Service Award," Leadership Houston Awards, May, 1999

"Executive-in-Residence for 1998," Washburn University, October, 1998

Boston Marathon, April, 1999

New York Marathon, November, 1999

He continues to support his alma mater (Washburn) and continues to add to the endowment of the Greg and Ronda Brenneman Professorship in Business Strategy.

2011 - Alan Mulally

Alan Mulally was born August 4, 1945, in Oakland, California. He graduated from the University of Kansas in 1969, with a Bachelor of Science and Master of Science degree in aeronautical and astronautical engineering. He is an alumnus of the Kappa Sigma Fraternity and was its 2007 Man of the Year. Mulally also received a master's degree in management as a Sloan Fellow from the MIT Sloan School of Management in 1982.



Mulally was hired by Boeing immediately out of college in 1969 as an engineer and advanced through the company in a series of engineering and program management positions, making contributions to the 727, 737, 747, 757 and 767. He led the cockpit design team on the 757/767 project. Its revolutionary design featured the first all-digital flight deck in a commercial aircraft, the first two-man crew for long-range aircraft and a common type rating for pilots on two different aircraft. He worked on the 777 program first as director of engineering and from September 1992, as vice president and general manager.

He was later named Vice President of Engineering for the commercial airplane group. He is known and recognized for elevating Phil Condit's "Working Together" philosophy through and beyond the charge of all airplane development activities, flight test operations, certification, and government technical liaison. In 1997, Boeing made Mulally the President of the Information, Space & Defense Systems and Senior Vice President. He held this position until 1998, when he was made president of Boeing Commercial Airplanes (Chief Executive Officer duties were added in 2001). Mulally was largely credited with BCA's resurgence against Airbus in the mid-2000s. For Mulally's performance at Boeing, Aviation Week & Space Technology named him as a person of the year for 2006.

Mulally was named the President and CEO of Ford Motor Company on September 5, 2006, succeeding William Clay Ford, Jr. He took over "The Way Forward" restructuring plan at Ford to turn around its losses and declining market share. Mulally's cost-cutting initiatives, which included cutting dividends, led to the company's first profitable quarter in two years.

In 2006, Mulally led the effort for Ford to borrow \$23.6 billion by mortgaging all of Ford's assets. Mulally said that he intended to use the money to finance a major overhaul and provide "a cushion to protect for a recession or other unexpected event." At the time, the loan was interpreted as a sign of desperation, but is now widely credited with stabilizing Ford's financial position. Due to his achievements at Ford, he was included in 2009 Time 100 list. The entry, written by Steve Ballmer, says, "[Mulally] understands the fundamentals of business success as well as any business leader I know."

Mulally previously served as co-chair of the Washington Competitiveness Council and sat on the advisory boards of NASA, the University of Washington, the University of Kansas, Massachusetts Institute of Technology, and the U.S. Air Force Scientific Advisory Board. He is a member of the United States National Academy of Engineering and a fellow of England's Royal Academy of Engineering. Mulally also served as a past president of the American Institute of Aeronautics and Astronautics (AIAA) and is a former president of its Foundation. Additionally, Mulally served as a past chairman of the Board of Governors of the Aerospace Industries Association.

Mulally has played on the semi-pro circuit for tennis and also enjoys golfing. In his spare time, he has taken to flying small planes. He is married to Jane "Nikki" Connell, and their family consists of three sons and two daughters.

2010 - Roy Applequist

Roy Applequist was born in Salina, Kansas, on June 3, 1946. Some might say that his path was set from the beginning. The son of Quintin Applequist, the creator of Roberts Industries, Inc., Applequist grew up working for his father's equipment manufacturing company where he gained first-hand knowledge of the business. Applequist graduated from Salina High School in 1964, and completed his education at North Park University in Chicago where he earned a B.A. in Economics in 1968. He returned home to Salina and, in addition to serving as a member of the U.S. Army Reserves, worked as manager of the foundry division of Roberts Industries, Inc. until the company was sold in 1975.



On April 1, 1976, Applequist began his own company - Great Plains Manufacturing, Inc. His initial plan was simple; he personally met 100 farmers and listened as they told him about their unmet needs. Applequist took that information and, starting with just one tool, produced a 30-foot folding grain drill with a large grain box that could be transported when full - exactly what the farmers had asked for. Once the prototype was completed, he quickly recruited farm equipment dealers to sell and service his product. The success of his product and company grew together as 25 drills were sold the first year and 100 the next, with sales doubling a year after that. It was not long until the company expanded its product range and gained a reputation for providing high-quality implements that met customer needs.

As the company has grown, Applequist's commitment to truly listening to customers has not diminished. He has taught his employees to do so as well, which has been a major factor contributing to the company's growth into one of the nation's leading privately held manufacturers of its kind. Great Plains Manufacturing, Inc. currently does business in all 50 states and has expanded into more than two dozen foreign countries. In recognition of their amazing success outside of the United States, the company was named 2006 Kansas Governor's Exporter of the Year.

That is not the only quality that sets Roy Applequist apart. As his company has expanded, he has had infinite options when deciding where to locate new plants and offices. Instead of spreading far and wide, Applequist chose to grow his company in Salina and the surrounding area. Great Plains Manufacturing, Inc. and its subsidiaries have provided countless jobs and positive economic growth to small Kansas towns such as Assaria, Abilene, Kipp, Enterprise, Lucas, Tipton, and Ellsworth. Currently employing over 1,000 people, it is undeniable that Great Plains, under the leadership of Applequist, has made an immense impact on east-central Kansas.

In addition to the activities of Great Plains, Applequist has also been personally involved in several organizations. He has actively participated in Salina's First Covenant Church and has been a member of The National Board of Evangelical Covenant Church of America. He has also served the community as a board member for such organizations as Kansas Wesleyan University, Bank IV, the Salina Regional Health Center, and his alma mater - North Park University. In recognition of his business success and his personal positive contributions to the community, Applequist was inducted into the Salina Business Hall of Fame in 2006.

2009 - Jack Goldstein

As captain of his Lincoln, Neb. High school debate team, Jack Goldstein thought he was only coming to Manhattan for the summer of 1933. His father needed his help in a new business venture—buying cattle hides and pelts in small towns and selling them in Kansas City.

Instead, Goldstein stayed in Manhattan to help his father, graduating from Manhattan High School the following spring. Although he had intended to enroll at Kansas State University and eventually become a lawyer, his father's business, Kansas Hide and Wool Company, still needed him.



A stint as a B-24 navigator during World War II took Goldstein away from the business temporarily, but he resumed his position in Manhattan after the war ended. Following the death of his father, Goldstein took charge of the company which later turned to buying steel in bulk from mills, storing it in warehouses, and then reselling it in smaller quantities.

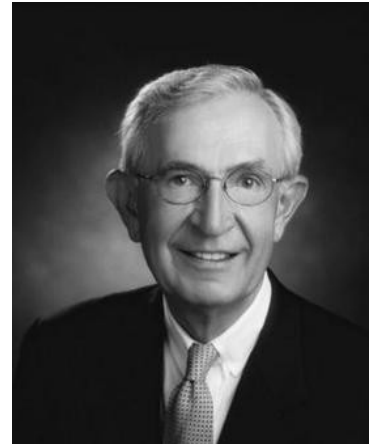
Steel and Pipe Supply Company was born from that idea, and operated for many years from a warehouse on Third Street in Manhattan. The company's corporate office remains in Manhattan, while warehouses are now located in Houston, Tulsa, St. Louis, Omaha and Kansas City.

Goldstein's list of service and contributions to Manhattan is an extensive one. He has served as a Manhattan city commissioner and president of the Manhattan Chamber of Commerce. A dedicated supporter of Kansas State University, Goldstein received a Distinguished Service Award from the KSU College of Business Administration. His support for the military has been marked by numerous awards and a term as president of the Association of the United States Army for nearby Fort Riley.

A steady supporter of the arts, Goldstein has been a benefactor to Manhattan's public library and serves on the board of the Beach Museum of Art at KSU. Goldstein and his first wife, Jean, began to collect art in their early years. He continued that activity with his second wife, Joann, whom he married 26 years ago after Jean's death.

2008 - Howard R. Fricke

Howard R. Fricke led Security Benefit, one of the most highly regarded companies in the financial services and retirement planning industry, as Chairman of the Board. Effective Jan. 1, 2006, he stepped down as Chairman, although he continued to serve on the board through the expiration of his term in June 2007. Fricke first joined Security Benefit in 1988 as CEO and in that time his innovative leadership helped the company's assets under management grow from \$2 billion to more than \$15 billion. Under his leadership, both Fortune magazine and Working Mother magazine selected Security Benefit as one of the 100 Best Companies to Work For in America.



Fricke also headed the state's lead economic development organization as Secretary of the Kansas Department of Commerce through December, 2006. Fricke oversaw the state's efforts in creating jobs through business recruitment and expansion, agriculture marketing, workforce development, community development, international trade, and travel and tourism.

Prior to joining Security Benefit, Fricke served as Chairman of the Board and Chief Executive Officer of the Anchor National Companies in Phoenix, Arizona. He also has previous state service, including serving as Secretary of the Kansas Department of Administration. While leading the central service resource for Kansas government functions, Fricke's ability to manage and thrive through challenging times stood out as the department strove to refocus its attention to quality customer service and the efficient delivery of services. Fricke also led the Infrastructure Team within Governor Kathleen Sebelius - Kansas Budget Efficiency Savings Team (BEST), and served as the Cabinet Secretary of Business and Economic Development for the state of Illinois in the early 1970s.

Fricke is a graduate of Illinois Wesleyan University and the Harvard University Graduate School of Business, Advanced Management Program. He is also a registered principal of the National Association of Securities Dealers (NASD).

A leader in the community, Fricke set the pace for Security Benefit's nationally recognized volunteer program. He served as a director for the Menninger Foundation and Stormont-Vail HealthCare and is Chairman of the Board for Collective Brands, Inc. (formerly Payless ShoeSource). He is past Chairman of both the United Way of Greater Topeka and the Greater Topeka Chamber of Commerce.

Fricke has also been active in financial services organizations. He is a past chairman of Life Office Management Association (LOMA) and served on the board of directors of the American Council of Life Insurance (ACLI), the preeminent trade associations of the life insurance and financial services industry. He is a past director of the Kansas Insurance Education Foundation, which in 1998 inducted Fricke into the Foundation's Hall of Fame.

2007 - F.D. 'Fran' Jabara

A certified public accountant, Fran Jabara earned his undergraduate degree from Oklahoma State University where he developed his own photography business and helped establish a chapter of the Alpha Tau Omega Fraternity. He completed his graduate studies at Northwestern University after serving three years in the U.S. Army during World War II. Mr. Jabara joined the faculty at Wichita State University in 1949 and served the University for 40 years until he resigned in 1989. He was appointed Distinguished Professor in 1971, and served as Dean of the College of Business Administration for seven years.



Compelled by his advocacy of the American Enterprise System and his firm belief in the important role of the entrepreneur to the perpetuation and growth of our system, he founded one of the first Centers for Entrepreneurship at Wichita State University in 1977. This program became internationally recognized and is well known as one of the finest and most comprehensive programs of its kind in the nation. He co-founded the Association of Collegiate Entrepreneurs (ACE), the largest national organization for collegiate students interested in entrepreneurship with members in all fifty states and twenty foreign countries.

Devoted to fostering a more conducive environment for entrepreneurs, Mr. Jabara continues to be actively involved in assisting and facilitating entrepreneurial development. He has been invited to foreign countries to discuss joint venturing and entrepreneurship. Mr. Jabara has been instrumental in assisting other universities in creating academic programs in entrepreneurship including Cornell University, University of Calgary, University of Notre Dame, Arizona State University, St. Thomas University, Marquette University and Monterey Institute of Technology, Mexico.

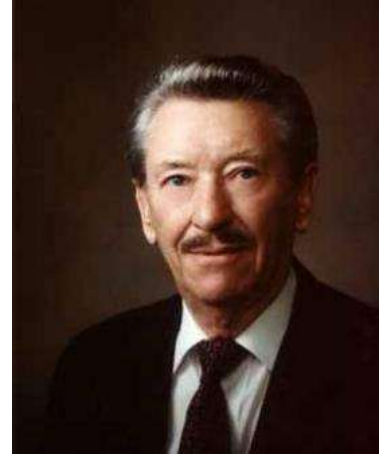
Mr. Jabara is the founder of a merchant banking and investment company, Jabara Ventures Group, as well as the Jabara Family Foundation. He is also a member of the board of directors of numerous corporations. In 1985, Jabara co-founded Leisure Hotels Group with Richard Smith and Steve Olson. In 1994, Jabara was the director of Union National Bank.

A recognized national leader in entrepreneurship, he was awarded the prestigious Leavey Award for Excellence in Private Enterprise Education and the George Washington Honor Medal by the Freedoms Foundation. In 1991, he was the recipient of the Ernst Young, Merrill Lynch, Inc. Magazine Award for Entrepreneur of the Year. Jabara was the chairman of the Kansas delegation to the 1986 White House Conference on Small Business. In 1991, he was the founder of the Project H.O.P.E. + E, a program designed to communicate ingredients of success through entrepreneurship to minority fifth graders.

In 1996, Wichita State University dedicated Jabara Hall, and that same year Mr. Jabara was inducted into the Hall of Fame at Oklahoma State University. Jabara still supports Higher Education at OSU through scholarships in accounting and professional entrepreneurship. In 1996, Jabara was also granted emeritus status by the Kansas Board of Regents. He was a 1997 Laureate for the Wichita Business Hall of Fame. The year 1999 was a busy one for Jabara. Both his wife and he received the Cardinal Newman Medal from Newman University.

2006 - Lyle Yost

Lyle Edgar Yost has referred to himself as a product of Hesston, Kansas. However, to no small extent, modern day Hesston has been shaped by Lyle Yost. Born in March, 1913, on a farm about a mile and a half northwest of Hesston, Yost led a normal childhood. He attended grade school and high school in Hesston and was prepared to enter Hesston Junior College in 1931. However, financial difficulties associated with the Great Depression delayed his entry until 1934. Yost attended the college for one year and while there met his future wife, Erma Martin, of Minot, North Dakota.



Following his first year at Hesston Junior College, Lyle transferred to Goshen College in Indiana where he received an economics degree in 1937. Upon the untimely death of his father in 1942, Lyle assumed the operation of the family farm outside Hesston. Because of the mobilization efforts associated with WWII, there was no new farm machinery available to local farmers. As a result, farmers who had equipment were encouraged to engage in custom work to help their neighbors. Since Yost possessed a nearly new Minneapolis-Moline combine, he began custom combining in 1943.

During his time as a custom combiner, Yost became disenchanted with the capabilities of his equipment. In 1947, he and Hesston machine shop owner Adin Frank developed the Hesston Unloading Auger which could be attached to various combines and which allowed grain to be offloaded while on the move. The auger proved so popular that by October, Yost, Frank and a third partner formed the Hesston Machine and Manufacturing Company to produce the augers.

In 1956, the company was renamed Hesston Manufacturing and over the next decade Hesston developed more than 70 new attachments and parts to improve the work of combines. In 1955, Hesston entered the hay and forage market with the introduction of the first commercially available self-propelled swather. In the late 60's and 70's, Hesston changed the way hay was produced through the introduction of a number of new products including the first one-man haying system. Finally, in 1978, Hesston introduced the first "big baler." It was designed to produce one-ton rectangular bales. While Hesston did not invent the round baler, it dramatically improved upon the original design by adding such features as the "open throat" design which facilitated easy bale starting.

In 1980, Yost sold the company and it was eventually acquired by AGCO, a world-wide manufacturer of agriculture equipment. By the late 90's, Hesston held more than 800 national and foreign patents and was a major marketer of innovative products. Many of these products are still manufactured in Hesston, Kansas.

Hesston Manufacturing is not the only contribution Yost has made to Kansas. He has been very generous to his community, his state, and world society. That generosity has included gifts of money as well as gifts of time and effort. A short list of these contributions includes the Mennonite Economic Development Associates (MEDA) which has engaged in economic developments in South America and the Aspen Chapel in Aspen, Colorado, which is an interfaith organization that features Christian services and Jewish Shabbat Services weekly. His charitable work also includes membership in such organizations as the Arthritis Foundation of Wichita and the Fairmount Society, a charitable group dedicated to financial support for various causes including higher education.

2005 - Robert J. Eaton

Robert J. Eaton was born in Buena Vista, Colorado, and moved to Arkansas City, Kansas, as a boy. His first job was delivering papers for the Arkansas City Traveler earning 35 cents for delivering more than 100 newspapers a day. He traces his interest in automobiles to age 11 when he bought his first car, a 1933 Chevrolet. "I bought it for \$10 and spent another \$15 getting it to run. I got my driver's license at 14. By the end of high school, I had owned 10 cars and 12 motorcycles."



Eaton earned his bachelor of science degree in mechanical engineering from the University of Kansas in 1963 and joined General Motors Corporation. He held a number of engineering and executive positions before he became president of GM Europe in 1988. In 1992, he joined Chrysler as vice chairman and chief operating officer. In 1992, he was elected chairman and chief executive officer succeeding Lee Iacocca.

In 1994, Eaton received the Distinguished Service Citation from the university and the KU Alumni Association in recognition of his achievements. He was also invited to give the 1995 Vickers Lecture titled "Chrysler and Free Enterprise in the 21st Century".

In 1998, Robert Eaton, chairman of the world's No. 6 car company, Chrysler, and Juergen Schrempp, chairman of No. 15 Daimler-Benz, merged their two companies to form DaimlerChrysler Aktiengesellschaft, the world's fifth biggest automobile concern. The new company, valued at \$40 billion, was expected to generate \$130 billion in sales and employ more than 400,000 people. As part of the merger agreements, Eaton was to serve as DaimlerChrysler's chairman for up to three years, during the transition, at which time he would be succeeded by Schrempp.

Eaton retired as Chairman of DaimlerChrysler AG on March 31, 2000. He had served as Chairman and CEO of Chrysler Corporation for seven years prior to the merger and presided over the most successful period in the company's history before forging the alliance with Daimler-Benz that resulted in the formation of DaimlerChrysler AG. "The merger is complete," Eaton told his management in a meeting announcing his retirement. "The structure and future leadership is in place. The two companies are one, my goal has been accomplished. This is the right time for me to go. The first full year of DaimlerChrysler has been a great one. Our sales revenues for 1999 are up about 12 percent. We sold 3.2 million Chrysler, Dodge, Plymouth, and Jeep products -- more than any other year in history. We sold more than a million Mercedes-Benz passenger cars and 550,000 commercial vehicles -- both also records."

Eaton has served as a board member of International Paper and Chevron Texaco. In addition, he is a past chairman of the National Academy of Engineering and has served as secretary-treasurer of the American Automobile Manufacturers Association. In addition, he is a trustee of the KU Endowment Association. Eaton pledged one of the ten largest single gifts ever received by the KU Endowment Association - \$5 million.

2004 - Don Landoll

Don Landoll has built a successful international metal exports business in rural Kansas. The Landoll Corporation manufactures a diverse product line including aircraft deicers, tillage equipment, trailers, and truck bodies. It also holds valuable patents, including one for a traveling axle trailer.

The company markets its products to 16 countries, most recently targeting the Caribbean and Middle East. Landoll and his company were awarded the 2001 Kansas Exporter of the Year Award. According to former Governor Bill Graves, the award is given to companies "that are committed to pursuing new business in the international marketplace."



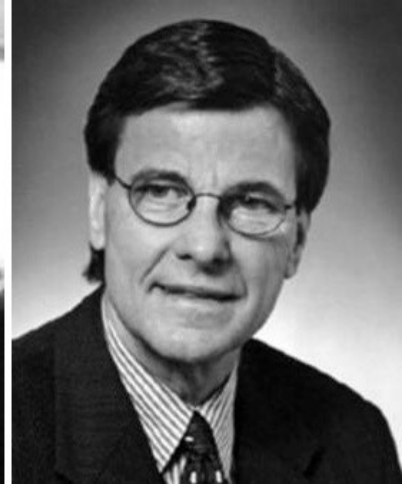
The company was founded in 1963 as Quick Service Welding by 20-year-old Don Landoll and a partner, who left Landoll with sole ownership in 1967. Since then, the company has grown to employ over 450 people with an annual payroll of more than \$5 million.

In addition to running a successful company, Mr. Landoll has taken a leadership role in local and statewide business and civic groups. He has been an active member of the Farm Equipment Manufacturers Association and served as its president from 1990 to 1991. He is a member of Kansas Cavalry, Marysville City Council, Rotary International, and the Board of the Catholic Foundation of Northeast Kansas.

In addition, he has served on the boards of many organizations designed to improve living conditions in Kansas such as the Community Memorial Healthcare Board, the Kansas Health Foundation Board, and the Huck Boyd Institute for Rural America.

2003 - Dan & Frank Carney

The founders of Pizza Hut, one of Americas most successful fast-food franchises, are more than simply entrepreneurs. They are devoted family men, philanthropists, and they are brothers. In addition, they have provided mentoring and financial support for over 100 other business entrepreneurs over the years. Finally, their successes did



not end when they sold their interest in Pizza Hut to PepsiCo. Both have gone on to successful "post-Pizza Hut" ventures.

The brothers were born and raised Wichita, Kansas, where they live today. In June of 1958, when Dan was 27 and Frank was 20, they borrowed about \$600 from their mother and opened "B & B's" a beer and pizza establishment designed to appeal to the local college community. Two years later they franchised the first Pizza Hut in Topeka. They changed the concept of the franchise to a quality family restaurant specializing in pizza and proceeded to expand the franchise. By 1977 when they sold the franchise to PepsiCo for an estimated \$310 million, Pizza Hut had become the world's largest pizza chain with annual sales exceeding the billion-dollar mark.

Although they are still on good terms, the brothers went their separate ways after selling Pizza Hut. Dan concentrated on managing investments while Frank invested in other restaurant ventures including Chi-Chi's, Western Sizzlin, and Papa John's Pizza. With respect to Papa John's Pizza, Frank switched roles - from franchiser to franchisee! He now operates stores in Kansas, Missouri and Texas as well as other locations in the US.

As mentioned earlier, the Carney brothers are more than just successful businessmen. They have been active in local civic activities. Dan has been active in the Sedgwick County Mental Retardation Board, the Wichita Community Foundation, the American Red Cross, and the Wichita State Endowment Association. Frank has served as president of the Wichita Chamber of Commerce and the International Franchise Association. He has been a Wichita Wings benefactor as well as a business class instructor at WSU.

As one family member recently put it "[t]hey are men of great character. They are dedicated and loving family men. They are honest, courageous, generous and humble." Another Kansan has observed "They are loyal Kansans. Successful people have unlimited choices of where to live and do business. Their choice for all of their lives has been Kansas."

Dan and his wife, Gayla, have 6 children and 10 grandchildren. Frank and his wife, Zenda, have a 8 children and 10 grandchildren (as of 1 Oct 2002).

2002 - Pack St. Clair

Known as the "Rolls Royce of boats," St. Clair's Cobalt Boats are enjoyed by marine enthusiasts around the world. They are built and distributed by St. Clair's Fiberglass Engineering, Inc., in Neodesha, Kansas.

Whether being named Kansas Small Businessman of the Year in 1973, appointed to the White House Conference on Small Business by Bob Dole in 1980, or being named the Governor's Exporter of the Year in 1999, St. Clair has made an impact of business and the boating industry far beyond Neodesha and far beyond Kansas.

Cobalt Boats command premium prices because they have developed a niche in the high-end market, based on high quality, a reputation as the best in the industry, and the company's solid relationships with dealers, St. Clair said. Success in quality and attention to detail comes from a very loyal long term associate base. Cobalt is unique in the boating industry because they manufacture most of the parts in house.

The combination of a strong dealer network and the quality focus of the Cobalt associates led the way for Cobalt to receive the top rating by J.D. Power and Associates for customer satisfaction.

A 1959 graduate of Independence High School, St. Clair graduated from the University of Kansas in 1963 with a degree in Education. He founded Cobalt Marine, Inc, in Chanute, Kansas, in 1968. The company became Fiberglass Engineering, Inc., and located in Neodesha, Kansas, where it has been since that time.

St. Clair is a past Chairman of the American Boatbuilders Association, the National Marine Manufacturers Association, the National Association of Boat Manufacturers, and the Mid-America Manufacturing Technology Center. He has served on the Board of Directors of First National Bank of Neodesha, the Kansas Association of Commerce and Industry, and the Kansas Marine Dealers. He currently (August 2001) serves on the Boards of Kansas Foodbank, Kansas Hospice, Westar Industries, Inc, Westlawn Institute, and the Kansas Cavalry.

St. Clair and his wife, Jill, have two grown children, Paxson and Whitney, and six grandchildren. They reside in Neodesha and their children and grandchildren live in nearby Independence.



2001 - Richard 'Dick' K. Davidson

A native of Allen, Kansas, Richard K. "Dick" Davidson started his railroad career as an 18-year-old brakeman/conductor with the Missouri Pacific in 1960. He was appointed assistant trainmaster at Shreveport, Louisiana, in 1966. He held various positions in the Operating Department at Fort Worth, Texas, Kansas City, and North Little Rock, Arkansas, before being named assistant to the vice president-operations in St. Louis, Missouri, in 1975 and vice president-operations in 1976.

Davidson joined the Union Pacific Corporation when it merged with the Missouri Pacific and the Western Pacific Railroads in 1982. He was promoted to vice president-operations of Union Pacific Corporation in 1986 and executive vice president in 1989. Davidson was appointed president and chief executive officer on August 7, 1991. He has been chairman, president, and chief executive officer since January 1, 1997.

Davidson is a director of Creighton University in Omaha and is on the board of trustees of the Boy Scouts of America. He serves on the U.S. Strategic Command Consultation Committee and is a member of the advisory roundtable for Nebraska Governor Mike Johanns. Davidson is on the board of directors of the Association of American Railroads, the industry's trade association in Washington, D.C. He also is a member of the Business Roundtable and is on the executive committee of the Center for Energy and Economic Development. In July 2000, he was elected to the Board of Directors of the Malcolm Baldrige National Quality Award Foundation.

Davidson received a Bachelor of Arts degree from Washburn University in 1965 and has completed the program for management development at Harvard University. He received an honorary degree in commerce from Washburn in 1994. He has been a Washburn Endowment Association Trustee since 1996 and has served as the Development Committee chair. Davidson and his wife, Trish, are the parents of three children.



2000 - Philip Anschutz

Philip Anschutz was born in Russell, Kansas, in 1939. His father was deeply involved in the rough-and-tumble 1950s oil market in Kansas and Wyoming which gave young Philip a zest for business early on. As a fourth grader he is said to have mounted his Kool-Aid roadside stand on two pairs of roller skates and rolled it up to the nearby college campus. The family moved often, including Hays and Wichita where he graduated from high school.

Mr. Anschutz graduated from the University of Kansas in 1961, where he earned a finance degree, with honors, and enrolled at the University of Virginia law school. But, when his father fell ill, and the family's finances took a turn for the worse, he returned home to help run the family business. He was quoted as saying the next five years were the hardest of his life, and "As a wildcatter, 95% of everything you do is failure: Most holes are dry!" But it turned out that Philip Anschutz had and has a remarkable ability to see hidden values where others don't and to act quickly on that knowledge while others are hesitant and miss out on the opportunity. He attributes it to watching his father and then developing his own sense of strategy and timing.



His first big strike in 1967 tells a lot about the man. On first discovery of the oil, he immediately bought up surrounding oil leases, buying them on credit. The next day, a spark ignited the entire field, threatening to bankrupt him. He called in the famed firefighter, "Red" Adair, who was reluctant to cap the blazing well without assurance of compensation. Anschutz contacted Universal Studios, who were filming a story on Adair at the time, and sold them rights to film his fire, for \$100,000, enough to assure payment to Adair and continued operations. In 1982, Anschutz sold a chunk of his find to Mobil for \$500 million. This allowed him to diversify his investments into real estate, agricultural interests and otherwise.

Philip Anschutz and his wife, Nancy, have made their family home in Denver, Colorado, where they have raised three children to adulthood. They have a relatively modest home and attend an Evangelical Presbyterian church regularly. Philip has run in over 15 marathons, and they work hard leading a "normal" life with old friends and close business associates.

In 1984, he bought the small Denver & Rio Grande Western Railroad. In 1988, he took control of the Southern Pacific Railroad. In a short time, development of a fiber-optics network along the railroad right-of-way begun. In 1996, the Southern Pacific was sold to the Union Pacific Railroad for \$5.4 billion. Philip Anschutz retained a 5.4% stake in the combined company. In addition, he retained the telecom company and the fiber-optics network it was based on along the railroad right-of-way. 1997, this company, now called Qwest Communications, was made public. As a public company, Anschutz still owns 84%. His original \$55 million investment was then valued at \$4.9 billion, earning him the designation recently, by Fortune magazine, as the "billionaire next door," estimating his worth well over \$10 billion, in the fall of 1999.

Another interest in recent years has been the area of sports and real estate. The Anschutz Corporation has ownership interests in the Major Soccer League and teams in Chicago and Denver, as well as the Los Angeles Kings and the Los Angeles Lakers. They are opening a new area in Los Angeles with related real-estate developments surrounding the area. Further, Anschutz has agricultural interests in Colorado, Wyoming and Texas more than 335,000 acres.

The Anschutz Foundation, a charitable organization, has, in recent years, begun to make substantial contributions to several worthy causes of interest to the family.

1999 - Ross Beach

Ross Beach, business leader and philanthropist, is a life-long Kansan. His basic career in oil and gas production, he is President of Kansas Natural Gas, Inc., and is also actively engaged in banking and ranching. He was formerly active also in the radio, television, and cable industry. He is a registered professional engineer.

Beach was born February 22, 1918, in Abilene, Kansas, to Roy and Mary (Lankow) Beach. When 17 days old, his mother died, and he was raised by his uncle and aunt, Ross (for whom he had been named at birth) and Mattie (Lowe) Beach. An older brother, Roy, no deceased, remained with his widowed father. They moved in 1924 from their first home in Solomon, Kansas, where



Mr. Beach had installed the first power plant, to Hays after United Utilities of Abilene purchased the Solomon plant and asked Mr. Beach to become manager of their company in Hays. Young Ross attended Hays public schools and Kansas State University, from which he graduated in 1940.

June 1, 1941, Ross married Marianna Kistler of Manhattan and was formerly of Lincoln, Kansas. They are the parents of three daughters, Mary (Mrs. Gary) McDowell of Port Townsend, Washington, Terry (Mrs. R.A.) Edwards of Hutchinson, and Jane (Mrs. Steve) Hipp of Wichita. They have eight grandchildren.

Ross served in naval aviation during World War II. He continued to utilize flying in his business and flew for nearly 50 years, logging more than a million miles in the air and receiving numerous citations for his record of flight safety.

Beach is past president of the Kansas State Chamber of Commerce and past chairman of the Kansas Fish and Game Commission. He was a member of the board of directors of the First National Bank of Kansas City, Dillon Stores, Inc., Woods Petroleum, Inc., American Home Life Insurance Co, and the National Business Aircraft Assn. He is past chairman of the Kansas 4-H Foundation, the Kansas State Fair, and the Kansas Business Hall of Fame. He has served on the advisory boards to the business schools of the University of Kansas, Kansas State University and Fort Hays State University. He holds a Distinguished Service Citation from the University of Kansas, the President's Award from Kansas State University, and a Distinguished Service Citation (with his wife) from Fort Hays State University.

Beach is an avid hunter and traveler, having hunted in India, Kenya, Mozambique, British Columbia, and Kodiak Island, as well as in the United States.

He is a member of the First Presbyterian Church, the Masons and Shrine, and of Quiet Birdmen. He is a senior active member of Rotary and a Paul Harris Fellow. His fraternity is Beta Theta Pi.

1998 - William H. Graves

William Graves was born in Saline County, Kansas, May 23, 1914, on a farm near Mentor. One of ten children, he has lived in Saline County all his life, except for the three-and-a-half years he spent serving in World War II.

In 1935, Graves and his father started Graves Truck Line after the loss of the family farm crops, the result of the Depression and a succession of flooding. The remaining source of income was the family truck, which the elder Graves and his sons used to haul crops and cattle to market for area farmers.

In 1939 his father passed away and Graves took over the truck line. By 1946 he was elected President of Kansas Motor Carriers Association, and in 1948 he formed a corporation and included his three brothers in the family business. Graves was president of the line from 1948 until 1976 and served as chairman from 1976 until his retirement in 1981.

Nicknamed "Mr. Transportation" by his peers in the trucking business, Graves guided his company as it grew into one of the largest regional motor carriers in the nation. At the time of its sale in 1978, it was a multi-million-dollar business.

Graves has remained extremely busy through the years, holding positions of service in many major trucking associations. He also has served his community tirelessly, with much time and leadership donated to the Boy Scouts, Kansas Wesleyan University, the Salina YMCA, and other state and local organizations. Graves retains his reputation for honesty, common sense, and sound leadership.



1997 - Charles G. Koch

Born in Wichita, Kansas, on November 1, 1935, Charles Koch received his B.S. degree in General Engineering in 1957, M.S. degree in Chemical Engineering in 1959 - all from M.I.T.

Koch was employed as an engineer for Arthur D. Little, Inc. from 1959- 61 and then he became Vice President of Koch Engineering Company, Inc., of Wichita and remained in that position from 1961-63. He was president of that company from 1963-71, as well as president of Koch Industries, Inc. from 1966-74. He has been Chairman and Chief Executive Officer of Koch Industries, Inc., since 1967.



Koch is director of the First National Bank in Wichita. Outside of his work in business, he also serves as a director of Wichita Collegiate School, the Institute for Humane Studies, the Cato Institute, Citizens for a Sound Economy, and the Wesley Medical Endowment Foundation, and is a member of the Mont Pelerin Society and the National Petroleum Council.

Koch is known to the community as a devoted family man who spends much of his time outside the office with his wife, Elizabeth, his son, Chase, and his daughter, Elizabeth. Although in his twenty years with Koch Industries, Inc., Koch has turned his father's company into a business empire, the ambitious side of the man's character pushes him to aspire to even higher goals by expanding the business and continuing to grow in the business community as much as possible in the coming years.

1996 - Harry Darby

Harry Darby Jr. was an industrialist who was a major producer during World War II and political leader who was among those who convinced Dwight D. Eisenhower to run for presidency in 1952.

Darby was born on 23 January 1895 in the Strawberry Hill section of Kansas City, Kansas, the son of Harry and Isabelle Smith Darby. His father had accompanied Darby's grandfather, Henry C. Darby, to the city on the Kaw River in 1869 from Washington. The year that Harry Darby, Jr., was born, his father established the Missouri Boiler Works Company on West Fifth Street in Kansas City, Missouri. He later relocated to Third Street and Minnesota Avenue in Kansas City, Kansas.



In 1911 at the age of sixteen, Darby began his career at the company and worked as a helper, mechanic, boilermaker, and structural ironworker before he became shop superintendent in 1917. After graduation from local public schools, he attended the University of Illinois where he received a bachelor's degree in mechanical engineering in 1917. He was elected president of the student body during his undergraduate career.

When the United States declared war on Germany on 2 April 1917, Darby took his examinations early so he could graduate in time to enlist in the United States Army. He served as a second lieutenant and later a captain in a field artillery battery. His unit fought in engagements from Chateau Thierry to the Soissons-Rheims line during the second battle of the Marne. He later served as a major in the United States Army Reserves and a lieutenant colonel in the Kansas National Guard. In 1917 Darby married Edith Marie Cubbison, his childhood sweetheart. The couple raised four daughters, Joan, Harriet, Edith, and Marjorie. Mrs. Darby became a lifelong companion in his civic and charitable efforts. She died in 1986.

After the war Darby returned to work at the boiler company. Following his father's death in 1923 he obtained a bank loan to buy the firm to found Darby Steel Company. The company grew steadily until the Great Depression when he had to lay off half of his work force. By 1938 he was able to purchase the bankrupt Kaw Steel Construction Company and form Darby Corporation that grew to be one of the largest steel plate manufacturing firms in the country. During World War II the corporation built war materials, including bombs and amphibious landing craft. At one stage during the war, these were launched on the Kaw River at the rate of one per day. The company eventually floated 1,400 landing craft downriver to New Orleans for shipment overseas. The Darby Corporation became a major wartime producer of locomotives and 1,000-pound (450 kg) bombs. The Darby-built troop landing craft known as LCTs and LCMs were used in the invasions of Italy, occupied France, and the Pacific Islands.

Darby spent some time away from his business in the 1930's when he served as director of Kansas State Highway Department from 1933 to 1937 under his friend, Governor Alfred M. Landon, the Republican presidential candidate in 1936. Darby was a major contributor to the Republican party for many years at the local, state, and national levels. He was elected a delegate to six Republican national conventions from 1940 to 1960 and was a chairman of the Kansas delegation in 1948, 1952, and 1956. He served as the party's national committeeman from 1940 to 1964 and was a member of the executive committee for twenty years. He promoted the presidential campaigns of Landon in 1936, Wendell L. Willkie in 1940, and Thomas E. Dewey in 1944 and 1948. Darby's friendship with fellow Kansan Dwight D. Eisenhower had the most lasting political and historical impact. The two met during World War I and later continued their friendship.

Darby served for eleven months as a United States Senator from Kansas in 1949-1950, filling the unexpired term of Clyde Reed who died in office. Darby did not seek election to the post. Instead, he turned his energies to persuading Eisenhower to seek the presidency. Darby won a reputation as a peacemaker among feuding Republicans.

Darby played a major role in the America Royal Livestock and Horse Show, serving as vice president for fifteen years, president for twelve years, and chairman of the board of governors for five years. He played a key role in obtaining legislation to establish the national charter of the Future Farmers of America. Darby actively ran a 1,500-acre farm in Wyandotte County, Kansas. He considered farming the basis of the Kansas City area economy and was avid in his support of agriculture. Darby was given many awards and held several honorary degrees. He was an Episcopalian and was listed in Who's Who in America as well as many other biographical dictionaries.

Darby's admiration for Eisenhower continued to the end of his life. Darby was credited with raising the money to build the Eisenhower Library in Abilene, Kansas, and in 1985, at the age of ninety, Darby took a personal interest in the design of a statue of the former President that he contributed to the Eisenhower Center in Abilene.

Darby died on 19 January 1987 at Bethany Medical Center in Kansas City, Kansas, less than a mile from where he was born. He was acknowledged to be a pre-eminent force in Kansas political and civic life and as an unassuming and gifted friend of national figures. He made a lasting impact on his community through his unaffected kinship with people in all walks of life.

1995 - Paul H. Hensen

A native Nebraskan, Hensen spent the greater part of his business career working for numerous Kansas concerns. After earning bachelor's and master's degrees in electrical engineering from the University of Nebraska, he began his career in telecommunications with the Lincoln Telephone and Telegraph Company.

He joined United Telecom in 1959 as vice president and promoted to director in 1960, president in 1964, and chairman and chief executive officer in 1985. He served as chairman of United Telecom for more than 25 years and retired in April 1990. Henson was elected chairman of the board of Kansas City Southern Industries in 1990.

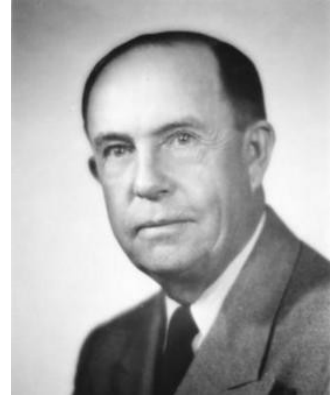
Hensen is a member of the President's National Security Telecommunications Advisory Committee and chaired that committee in 1989-90. He serves as director on the boards of several companies, including Armco, Inc., Duke Power Company, Hallmark Cards, Inc., United Telecommunications, Inc., and Ameribanc.

His civic and service activities include trusteeships on the Tax Foundation, the University of Nebraska Foundation, Midwest Research Institute, the University of Kansas City, and the Business-Higher Education Forum. He also is a director on the boards of the Kansas City Symphony and the Kansas City Minority Suppliers Development Council.



1994 - Oscar S. Stauffer

It was in his hometown of Hope, Kansas, that Stauffer decided to print his own newspaper. The founder and honorary board chairperson of Stauffer Communications began his career as a reporter for the Emporia Gazette. Pay was low, but experience gained under the tutelage of William Allen White, which proved invaluable in later years. When White fired Stauffer, telling him to go to college, Stauffer enrolled at the University of Kansas supporting himself by working part time for the Kansas City Star. After his second year at KU, the Kansas City Star employed him as a reporter and later as assistant city editor.



Soon after, Stauffer used his savings to buy a weekly newspaper at Peabody and consolidate them into the Peabody Gazette-Herald. His first venture into daily newspaper publication was with the acquisition of the Arkansas Daily Traveler in 1924. Stauffer Publications became a success in 1930, with the consolidation of six separately owned newspapers. He moved to Topeka, in 1940, with the purchase of the Topeka State Journal. His newspaper holdings rose slowly, until 1957, when his company purchased Capper Publications, which brought the Daily Capitol, WIBW, and Capper's Weekly into the group. In 1977, they changed the firm's name to Stauffer Communications.

A Republican, Stauffer was a national chair of the Landon Committee, which helped to cause the Alf Landon's nomination for U.S. President.

He long had an interest in education and provided many scholarships to worthy and needy students in Hope, Emporia, and Topeka. His philanthropic gifts included \$1 million to the Kansas University School of Journalism. A \$100,000 endowment of the Oscar S. Stauffer Chair in Journalism at KU, in memory of William Allen White, and a \$250,000 permanently endowed fund at Washburn to create the Oscar Stauffer International Lecture Series.

Among his civic activities, Stauffer was the first chair of the Kansas Industrial Development Commission, which later became the Kansas Board of Regents, several terms as chair. He served on a committee that sparked the reorganization of the Associated Press and subsequently served as Ap Vice President. In 1950, he was president of the Inland Daily Press Association, a publisher's organization covering 21 states.

His services as trustee included the Menninger Foundation, Washburn University Endowment Association. In 1960, Stauffer received the William Allen White medallion for Journalism.

At the time of his death in 1982, he was an honorary board chair of Stauffer Communications, a publicly held company that owns and operated 20 newspapers, two TV stations, nine radio stations and several affiliated operations in 11 states.

1993 - Henry A. Bubb

Under the leadership of Henry Agnew Bubb, Capitol Federal Savings and Loan Association grew from 12 employees to one of the largest financial institutions in Kansas. Bubb started with Capitol Federal as a clerk in 1926 and was elected President and Chairman of the Board in 1941, where he continued until 1969.

Bubb, born in Williamsport, Pennsylvania, in 1907, moved to Topeka, Kansas, at an early age. He attended Topeka public schools and the University of Kansas and later received an honorary doctor's degree in business from Washburn University.



Bubb has served as Chairman of the Board of the Mortgage Guaranty Insurance Corp., and member, Vice-Chairman and Chairman of the Federal Home Loan Bank of Topeka. He served on numerous advisory committees to the U.S. Senate, including the Banking and Currency Committee, and the U.S. Department of Treasury advisory committee on the savings and loan industry.

Bubb was active in many charitable organizations, such as the Topeka Chamber of Commerce, American Red Cross, and Kansas Research Foundation. He also served on the Kansas State Board of Regents from 1961 to 1977.

1992 - Donald J. Hall

Hall is board chairman of the company founded by his father, Joyce C. Hall. Hall has spent his entire life in the family business. As a 17-year-old high school graduate, he worked as a Hallmark salesman. While at Dartmouth College in Hanover, N.H., he worked a nearby sales territory. In 1950, upon graduation from Dartmouth, he served with the Army in Japan.

He returned to Hallmark in 1953 and, in 1954 became assistant to the president. In 1958, Hall became administrative vice president and in March 1966 he was named president and chief executive officer. In June 1963 he moved to Chairman of the Board.

Hall serves on the board of directors of Dayton Hudson Corp. and United telecommunications Inc. In September 1990, he was selected by President Bush to chair the President's Committee on Arts and Humanities. He is one of three trustees of the Nelson-Adkins Museum of Art in Kansas City, a member of the Kansas City Symphony Board of Directors and is a trustee of the Missouri Repertory Theatre.

Hall lives in Mission Hills with his wife, Adele. They have two sons, a daughter, and five grandchildren.



1991 - Ray E. Dillon

Ray E. "Ace" Dillon, Jr. has been Board Chairman of one of the largest retail grocery chains in the country, an operation that started in Hutchinson, Kansas as a single grocery store. Dillon's has expanded into 600 outlets and 25,000 employees in a dozen states.

Dillon was president of Dillon Companies, Inc. for 18 years. During that period, the store expanded outside of the state of Kansas to such states as Louisiana, California, Iowa, Arizona, Arkansas, Wyoming, Utah and Oklahoma.

At 18 years old, Dillon spent a semester at the University of Kansas before going off to fly fighter planes in Europe. Returning to Kansas, he spent one more year in college. Dillon moved into the chairman's seat in 1980, succeeding his father.

Before being acquired by Kroger's, Dillon's became a 12-state regional food chain with retail outlets including Dillon's stores, Fry's Food Stores, King Soopers, City Markets, and Sav-More stores.



1990 - Fred Bramlage

A Junction City native, he developed enterprises that have been characterized as innovative and attentive to the interest of his customers, employees, and the public. His business interests included petroleum, banking, tires, real estate development, beverage bottling and distribution, and politics.

The most visible measure of Bramlage's success has been his generosity to charitable organizations such as the Boy Scouts, Junction City Library, Geary County Historical Museum, Kansas State University, his church, and housing for the elderly. KSU recently honored him by naming its new basketball coliseum after him.



After a tour in the Navy and working in private industry, Bramlage became active in state politics, at one time heading the campaign of President Dwight D. Eisenhower. He served as national Vice Commander of the American Legion. Many attribute the location of the Eisenhower Museum in Kansas to his efforts to fund and bring it here.

Bramlage attended Rockhurst College and Kansas State University and currently resides and pursues business interests in Junction City.

1989 - Olive Ann (Mellor) Beech

Olive Mellor Beech, past president of Beech Aircraft Corporation (now part of Raytheon Company), once admitted that when she first began work in aviation as an office manager she "didn't know the empennage of an airplane from the wing." Continual taunts from the staff on her lack of knowledge forced the young woman to learn the name and function of every part of the planes manufactured at Travel Air.

In 1930, Mellor married Walter Beech, the founder of Travel Air. Two years later, dissatisfied with working only remotely with aircraft construction in New York, the two relocated to Wichita to establish Beech Aircraft Company. The business grew quickly, and by 1938, the company dominated the market of private owner and commercial planes; Beech Aircraft sales exceeded \$1 million.

Because of her husband's illness, Mrs. Beech carried much of the responsibility for the company's operations during World War II. After his death in 1950, Mrs. Beech became president and director of the Beech Aircraft Corporation.

She also served on numerous business, civic, and cultural committees and organizations. As early as 1943, Beech received national recognition as a successful businesswoman - the "New York Times" named her as one of the 12 most distinguished women in America. In 1951, she was selected as "Woman of the Year" by the Women's National Aeronautical Association, and in 1952 she received the Lady Drummond Hay Trophy as the woman who had done them most for aviation during the year.

