

A close-up portrait of a woman with dark hair, looking slightly upwards and to the right. She is wearing large, triangular, multi-layered earrings in shades of blue, yellow, and white. The background is filled with dark, out-of-focus foliage and a prominent peacock feather with a vibrant blue and green eye. The overall mood is artistic and elegant.

MIM TÉ BY MINA TAFAZOLI

2025 CATALOGUE

WWW.MIMTEDESIGN.COM



About Us

Mim Té by Mina Tafazoli is a collection of contemporary handcrafted mirror jewelry inspired by the magic of reflection and light.

Influenced by Persian heritage, every item is a piece of wearable art that embodies a woman's sparkle from the inside out.

Our mirror jewelry pieces are all handcrafted by the designer herself. Our jewelry creations are made of up-cycled and repurposed plexiglass while our necklaces and handmade earrings are lightweight, comfortable and easy to wear.



Mirror Work Collection

Inspired by the art of mirrors, this collection includes delicate jewellery formed by finely cut up-cycled plexiglass pieces assembled together in simple, elegant geometric forms. Following the original old Persian technique of Āina-kāri, this collection of handmade wearable art highlights the female elegance and natural beauty through simplicity and 'recomposition'.



Mosaic Earrings

2 x 2 cm

\$60



Star Earrings

3.5 x 3.5 cm

\$60





Palm Earrings
3 x 4 cm
\$70





Lotus Earrings
4 x 3 cm
\$60





Almas Earrings

4.5 x 5 cm

\$90



Floral Earrings
4 x 2 cm
\$90

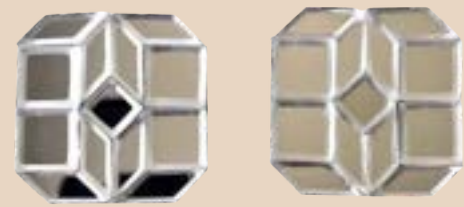




Shah Cheragh Earrings

3 x 3 cm

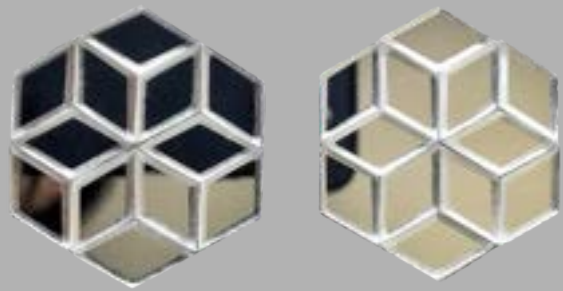
\$100



Hexagon Earrings

4 x 3 cm

\$100





Shamseh Earrings
4.8 x 4.8 cm
\$80





45 Cross Necklace
Pendant Dimension: 4 x 4 cm
Necklace Length: 50 cm
\$90



45 Necklace
Pendant Dimension: 4 x 4 cm
Necklace Length: 50 cm
\$90





90 Cross Necklace

Pendant Dimension: 4 x 4 cm

Necklace Length: 46 cm

\$105



90 Necklace

Pendant Dimension: 4 x 4 cm

Necklace Length: 46 cm

\$105



Shah Cheragh Necklace
Pendant Dimension: 3 x 3 cm
Necklace Length: 44 cm
\$70



Palm Necklace

Pendant Dimension: 8 x 3.5 cm

Necklace Length: 47 cm

\$70





Sky Collection

Escape the ordinary, reach for the sky; this is the idea behind Mim Té's Sky Collection. Stimulated by the sky and its beauty, Mina Tafazoli picked the sun and the stars and made a wearable collection inspired by nature's grace.

Sky Collection pieces are crafted by hand and made of up-cycled plexiglass. They are light, easy to wear while their unique shades and reflections let the inner light of every woman shine.

Bold Star Earrings
6.5 x 6.5 cm
\$80

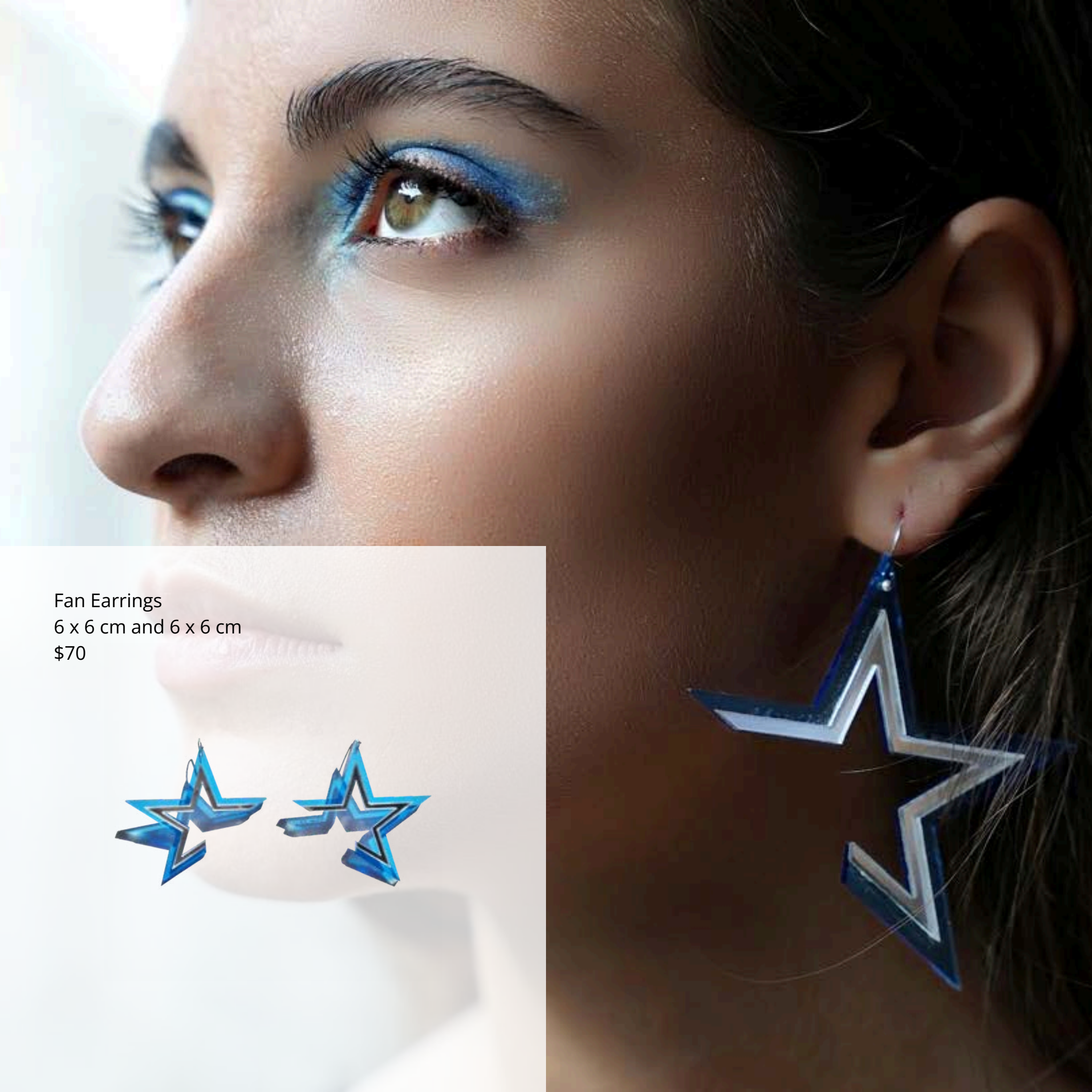


Bold Star S L Earrings
6.5 x 6.5 cm and 3.5 x 3.5
\$70



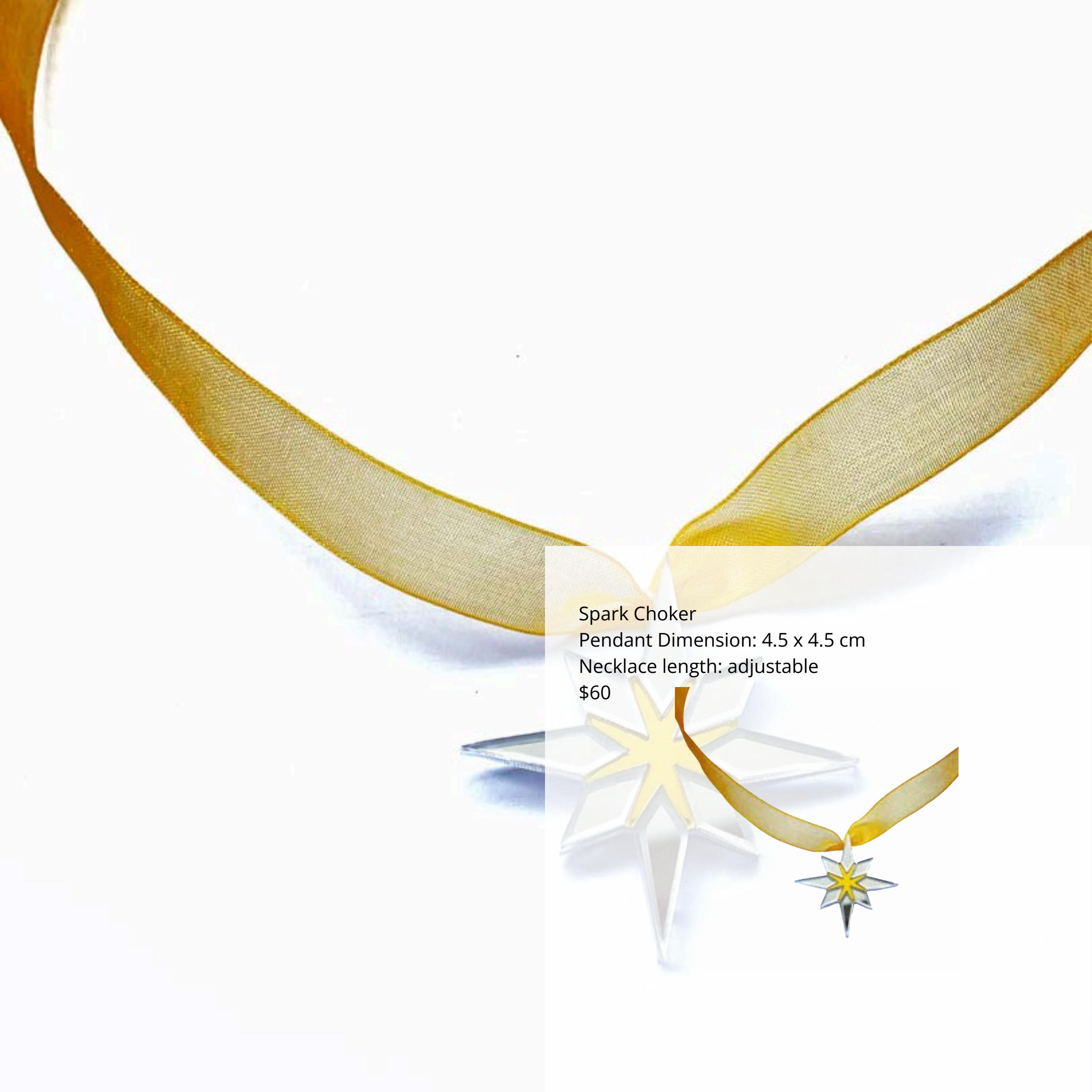
Bold Star S Earrings
3.5 x 3.5 cm
\$45





Fan Earrings
6 x 6 cm and 6 x 6 cm
\$70





Spark Choker

Pendant Dimension: 4.5 x 4.5 cm

Necklace length: adjustable

\$60

Lover's Eye Collection

Inspired by a true love story and the Georgian Era, this collection is a modern interpretation of 'Lover's eye' jewellery. Crafted by hand and made of upcycled plexiglass. Every single necklace or pendant aims to portray a nostalgic romanticism together with the mystery of passion and love. This collection symbolizes the beauty that lies in lovers' eyes.



Inspired by a true love story and the traditional Eye Miniatures of the Georgian Era, 'Lover's Eye' Collection is an ode to romance.

It is said that during the Georgian Era, King George IV began an affair with Maria Fitzherbert and had his eye painted on a locket for her. Maria Fitzherbert, on the other hand, had her eyes painted for him.

Britain's most elegant aristocrats used to wear the Eye Miniature portraits depicting their other half. Thanks to the fact that the portraits were only depicting their eye, the person's identity could be kept secret.

This collection is a reinvention of the traditional form of Lover's Eye Jewellery. Crafted by hand and made of up-cycled plexiglass, every single necklace represents a fresh look at the mysterious world of love and romance.



Heart Pendant L

Pendant Dimension: 5.5 x 5 cm

\$140



Heart Necklace S

Pendant Dimension: 4.5 x 4 cm

\$160



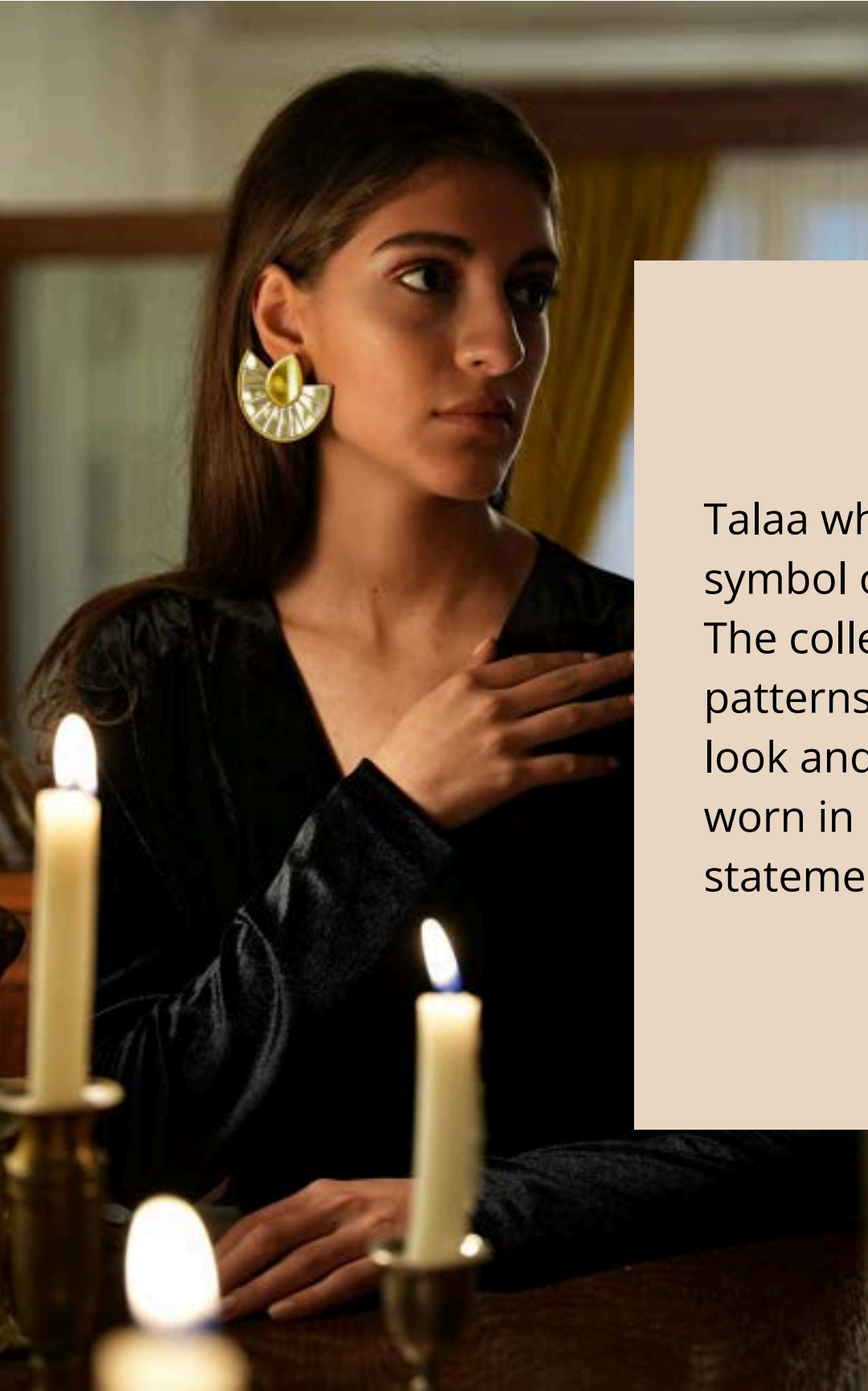
Frame Necklace

Pendant Dimension: 6 x 7 cm

\$180



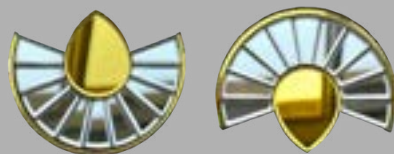
Talaa Collection

A woman with long dark hair is shown in a dimly lit room, looking thoughtfully to the side. She is wearing a large, ornate gold earring with a fan-like design. Her hand is resting on her chest. In the foreground, several lit candles in brass holders provide a warm, ambient glow. The background is softly blurred, showing hints of a window with yellow curtains.

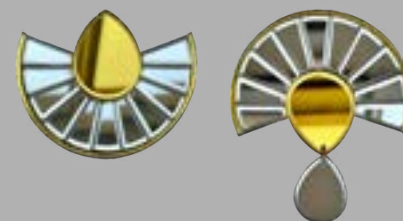
Talaa which means gold in Farsi, is a symbol of love, wisdom and magic. The collection uses geometrical patterns to create a cool luxurious look and feel. The pieces can be worn in pairs or as a single statement piece.



Fan Earrings
6 x 4.5 cm and 6 x 4.5 cm
\$120



Tear Earrings
6 x 4.5 cm and 6 x 7 cm
\$140



Square L + S Earrings
5.5 x 5.5 cm and 3 x 3 cm
\$75



Fan + Tear Earrings
6 x 4.5 cm and 2 x 3 cm
\$80



Square L + L Earrings
5.5 x 5.5 cm
\$85



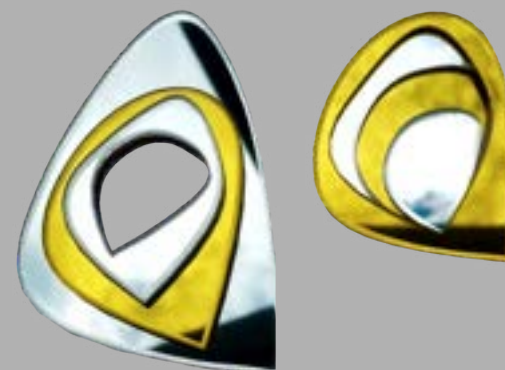


Kites Earrings
7 x 13 cm and 7 x 11.5 cm
\$140





Topo Earrings
7 x 10 cm and 6 x 6.5 cm
\$145





Pear Earrings
6.5 x 10.5 cm
\$130



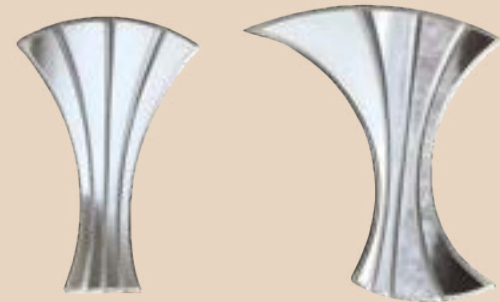


Architectural Collection

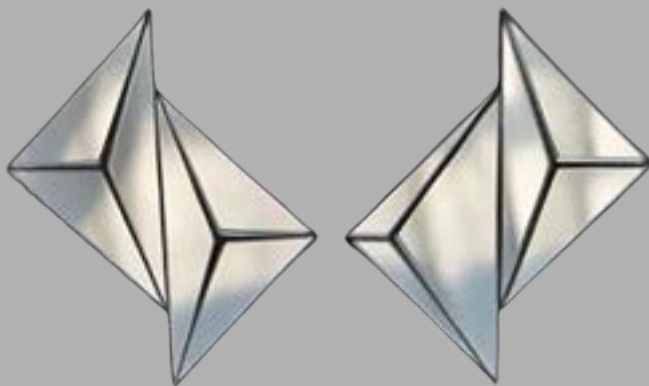
Whether you seek a bold statement piece or a delicate everyday accessory, our jewelry inspired by architecture promises to elevate your style with a touch of architectural brilliance. our contemporary pieces embrace the minimalist elegance of modern architecture, embodying clean lines, geometric shapes, and unexpected angles.



Waves Earrings
4.5 x 7 cm and 6.5 x 7.5 cm
\$90



Shift Earrings
6 x 8 cm
\$85

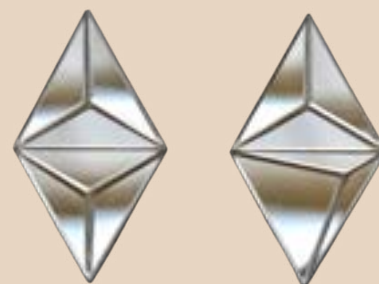




Triangle Earrings

4 x 6.5 cm

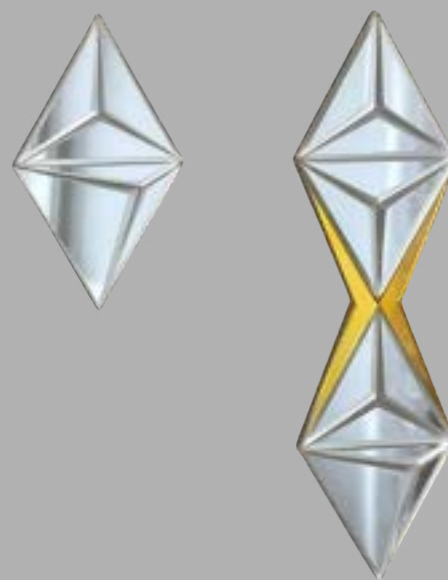
\$80



Triangle Double Earrings

4 x 13.7 cm and 4 x 6.5 cm

\$105





Limited Edition Collection

Our "Limited Edition Collection" is designed to make a bold statement. Crystal chandelier pieces are vintage and have been used to add a unique look to the pieces. Some designs are one-of-a-kind whereas, the others are available in limited quantities. Indulge in the magic of "Crystal Reflections" and discover jewelry that reflects not only your style but also your spirit.



Shell Yellow Earrings

4.7x 9 cm

\$150



Shell Purple Earrings

4.7x 9 cm

\$150





Shell Gold Earrings

4.7x 9 cm

\$150



Mermaid Blue Earrings
4.7 x 7.5 cm
\$150



Mermaid Purple Earrings
4.7 x 7.5 cm
\$150



Mermaid Gold Earrings
4.7 x 7.5 cm
\$150



Lily Lapis Lazuli Earrings
4 x 8 cm
\$175



Lily Fluorite Earrings
4 x 8 cm
\$175



Lily Crystal Red Earrings
4 x 8 cm
\$160



Lily Amazonite Earrings
4 x 8 cm
\$175



Lily Crystal Blue Earrings
4 x 8 cm
\$160



Lily Fluorite Earrings
4 x 8 cm
\$175



A close-up portrait of a woman with dark hair, looking slightly to the side. She is wearing a large, geometric, neon green and yellow earring. The background is a dark, textured green.

Neon Collection

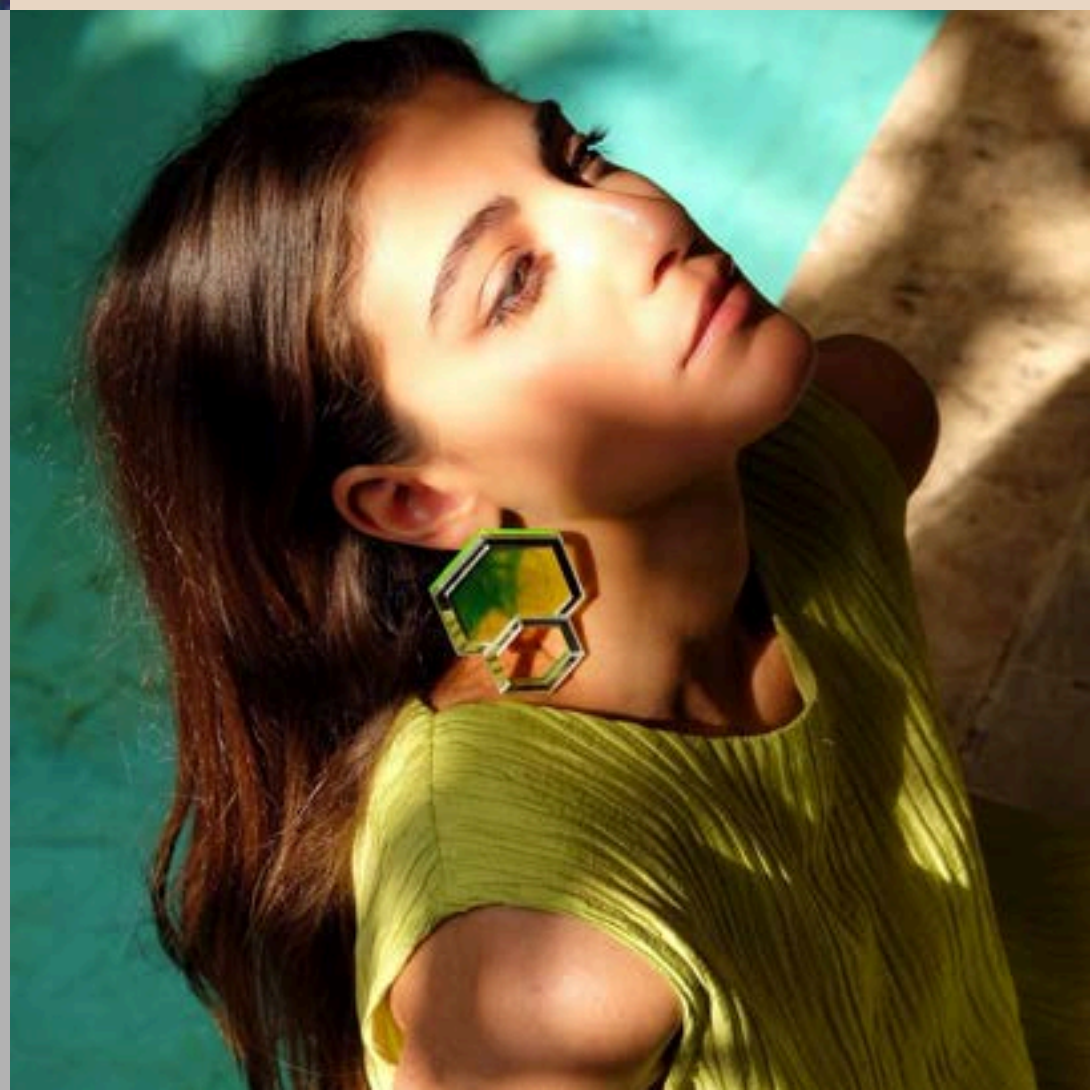
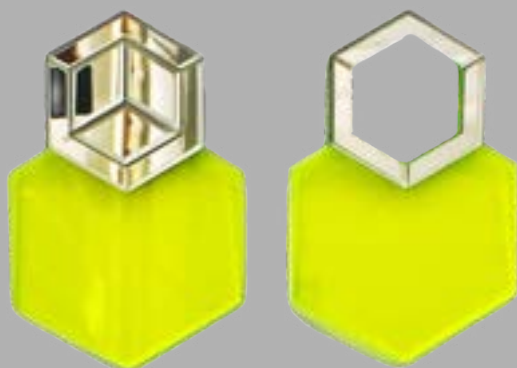
The "Neon Collection" combines reflective brilliance with bold, vibrant colors. These innovative and sophisticated designs use intricate geometric shapes to create dynamic, eye-catching pieces that are both visually stunning and lightweight. Perfect for any occasion, the Neon Collection offers versatile, modern jewelry that celebrates contemporary design and vibrant color.



Neo1 Earrings
11 x 4.5 cm
\$135



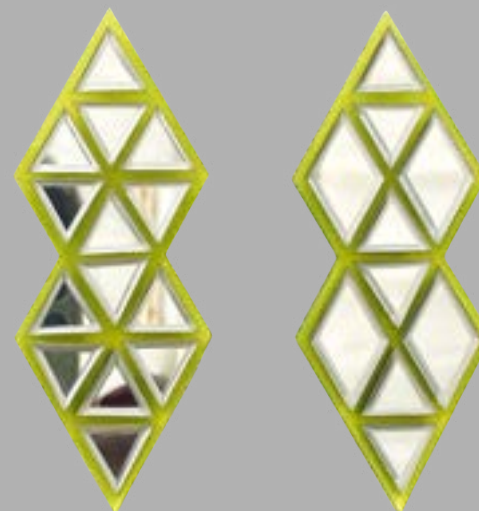
Hexa2 Earrings
8 x 5 cm
\$115




Diamond Asymmetric Earrings
10 x 4 cm and 7 x 4 cm
\$140



Diamond Earrings
10 x 4 cm
\$180



Brooch

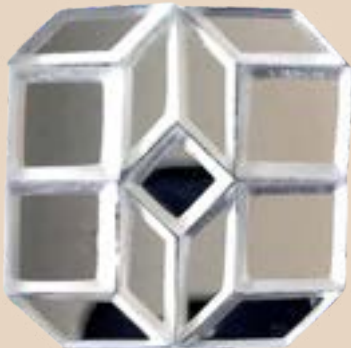


Mim Té's brooches and bracelets showcase intricate craftsmanship and timeless design, featuring pieces from various Mim Té collections. Each creation reflects a fusion of Art Deco geometry and delicate ornamentation, transforming jewelry into wearable art.

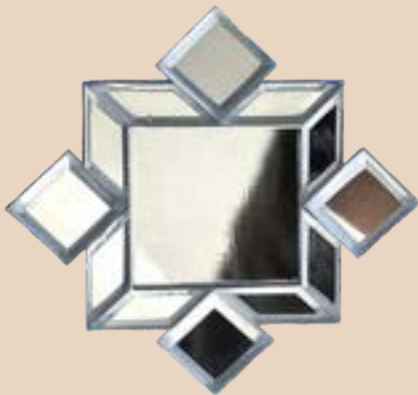
Fan Brooch
6 x 4.5 cm
\$70



Shah Cheragh Brooch
3 x 3 cm
\$50

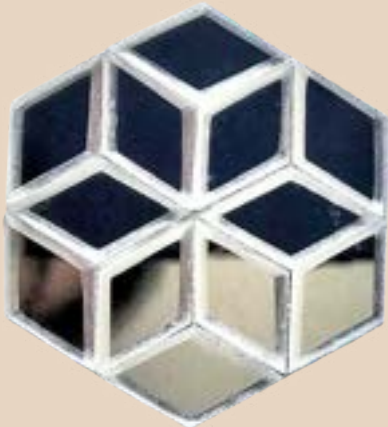


Shamseh Brooch
4.8 x 4.8 cm
\$40



Brooch

Mermaid Gold Earrings
4.7 x 7.5 cm
\$150



Tear Brooch
6 x 7 cm
\$75



Floral Brooch
4 x 2 cm
\$45



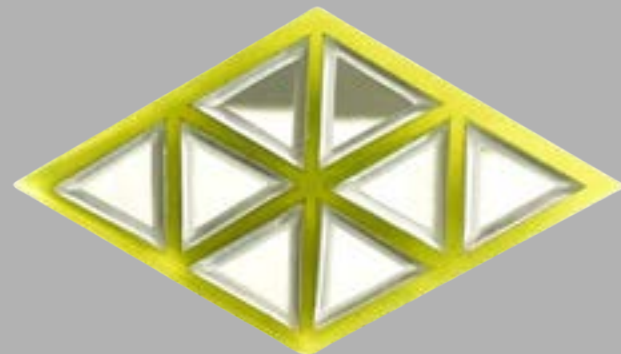
Triangle Brooch
4 x 6.5 cm
\$40



Lily Brooch
4 x 8 cm
\$80



Diamond S Brooch
7 x 4 cm
\$75



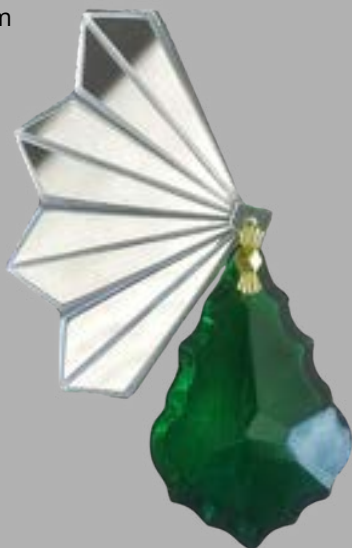
Waves Brooch
4.5 x 7 cm
\$45



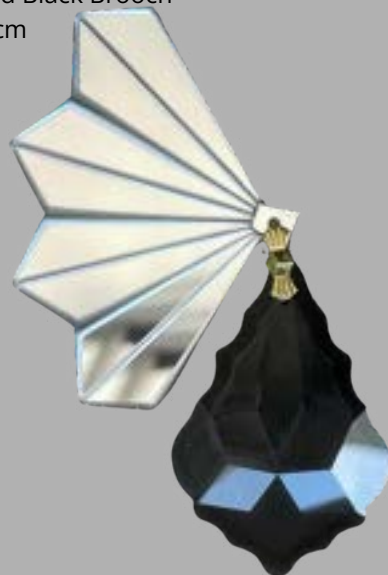
Bold Star Brooch
6.5 x 6.5 cm
\$40



Mermaid Green Brooch
4.7 x 9 cm
\$75




Mermaid Black Brooch
4.7 x 9 cm
\$75



Mermaid Blue Brooch
4.7 x 9 cm
\$75



Brooch

A close-up portrait of a woman with long, dark, wavy hair. She is looking slightly off-camera with a soft expression. She is wearing large, ornate earrings that have a fan-like, geometric top and a teardrop-shaped crystal bottom. Her hands are visible, with one hand near her face and the other near her chest, both adorned with manicured nails. In the foreground, there are delicate baby's breath flowers. The background is softly blurred, showing what appears to be a window with light coming through. A semi-transparent dark band across the middle of the image contains white text.

www.mimtedesign.com
contact@mimtedesign.com

WWW.MIMTEDESIGN.COM