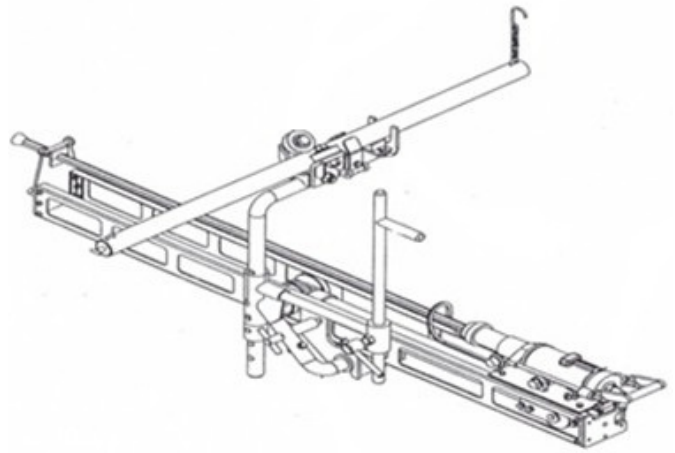
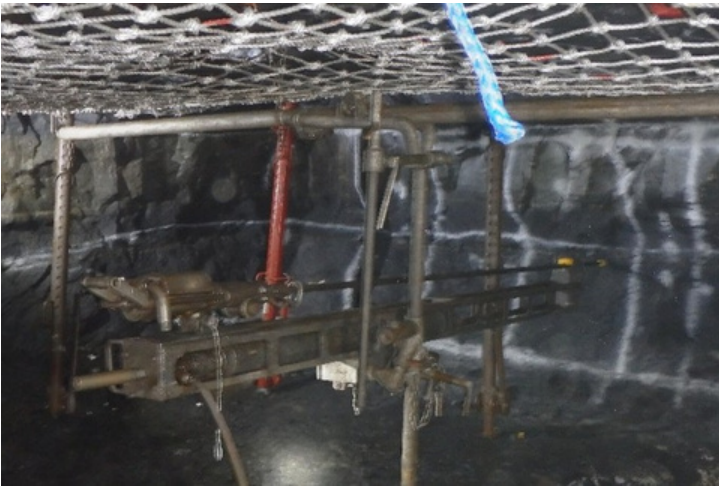




Yena Lo Drill Jig



www.snatchmining.com



078 559 3210



sales@snatchmining.co.za



Benefits

- Creates a safer and more stable working area
- Smooth hanging and side wall, proper face advance, and fragmentation control through direction and burden control
- Monorail system is suspended from roof bolts/eye bolts, ensuring the Jig cannot operate without support (no shortcuts on support)
- Lower than rigs, reducing equipment height requirements
- Less impact from equipment breakdowns compared to rigs
- Easy installation and assembly, reducing physical strain on operators
- Improves operator energy levels and enhances psychological awareness
- Remote drilling (10m from the face) increases safety in unstable areas, including bad hanging walls, dome slips, faults, dykes, methane pockets, fissures, and difficult holing examination zones
- Increases efficiency, enabling more panels to be drilled with the same workforce – fewer employees required at the face
- Inline thrust technology allows faster drilling per hole, effortless extraction, and earlier task completion
- Capable of replacing trackless/semi-trackless rigs, improving face advance per blast
- Highly cost-effective and compatible with any hand drilling machine
- Current workforce will be trained and qualified as Jig operators during the contract period

Specifications

- Underground mining relies on safe, efficient operations. Modern mining demands reliable, effortless rock-breaking methods. Pneumatic drill jigs improve drilling accuracy, ensuring better rock breakage and lasting benefits.
- Assembled width: 0.4m,
- Assembled length: 2.6m (Development), 1.6m (Stoping)
- Assembled height: 0.6m – 3.5m
- Mass:
 - 35kg (Boom)
 - 25kg (Cradle)
 - 7kg (Mono rail)
- Length Mono rail: 3m/6m
- Minimum Operating width required: 0.75m
- Installation distance of eye bolt: Site specific
- Handling and moving method: On face by hand
- Stacking: Stack in safe place away from moving rock and material.
- Operates with all pneumatic machines.
- Jumper size: Site specific.
- Jumper length: Depending on desired length of hole (2.6m).
- Drilling times:
 - 1.5m (2 minutes)
 - 2.6m (3.20 minutes)
- Hard rock extracting time: 15 seconds from extracting to collar of next shot hole.
- Air pressure required for operating: 3 – 7 bar

