



## SJ46/51 AJ ARTICULATING BOOMS

### STANDARD FEATURES

- Axle based 4WD system
- Operator controlled locking rear differential and limited slip front differential
- Oscillating axle
- Drivable at full height
- 360° continuous turret rotation
- 45% Gradeability
- 48 HP Deutz diesel engine
- Swing out engine tray
- Swing up cowlings
- Modular platform railing system
- Wiring for outlet on platform
- Direction sensing drive and steer controls
- Proportional controls
- Relay based control system
- Colour coded and numbered wiring
- Hourmeter
- Overload sensing system
- Operator horn
- Flashing light
- All motion alarm
- Dual-entry sliding mid rails
- Lanyard attachment points
- Tie down/lifting lugs
- Wet disc SAHR brakes (rear axle)
- Grip lug foam-filled tyres

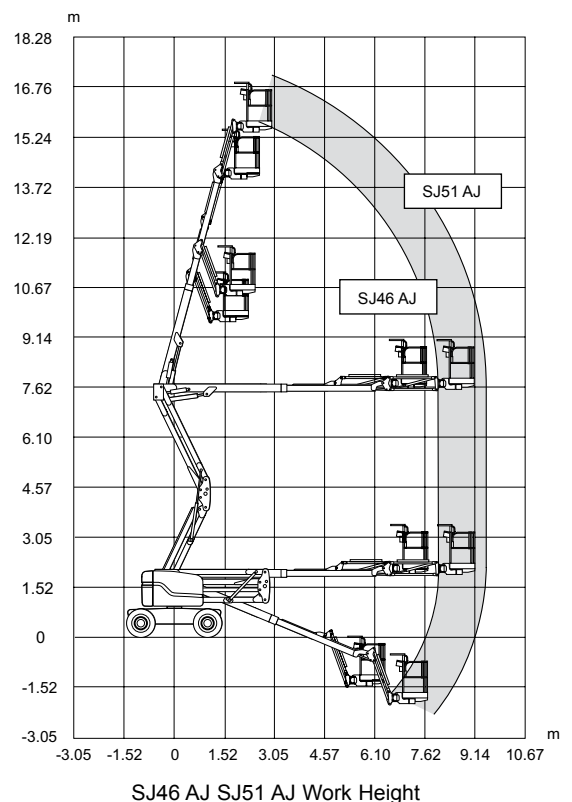
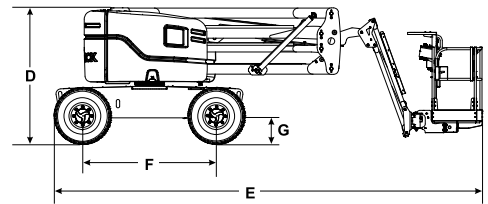
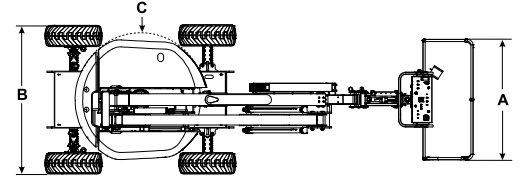
### ACCESSORIES AND OPTIONS

- 0.76 x 1.52 m Platform
- Airline to platform
- Diesel scrubber
- Hydraulic oil cooler
- Side entry gate
- Auxiliary top rail (0.76 x 1.83 m platform only)
- Control box cover
- Secondary guarding (electrical or mechanical)
- Grip lug foam-filled non marking tyres

\* Capacities, and machine weights may differ when options are added

# SJ46/51 AJ ARTICULATING BOOMS

Dimensions	SJ46 AJ	SJ51 AJ
Work Height	16.10 m	17.55 m
Platform Height	14.10 m	15.55 m
Horizontal Reach	7.54 m	9.03 m
Up and Over Height	7.45 m	7.45 m
<b>A</b> Platform Size	1.83 x 0.76 m	1.83 x 0.76 m
<b>B</b> Stowed Width	2.29 m	2.29 m
<b>C</b> Tailswing	Zero	Zero
<b>D</b> Stowed Height	2.07 m	2.07 m
<b>E</b> Stowed Length	6.50 m	7.25 m
<b>F</b> Wheelbase	2.03 m	2.03 m
<b>G</b> Ground Clearance	0.40 m	0.40 m
Specifications	SJ46 AJ	SJ51 AJ
Rotation	360°	360°
Platform Rotation	170°	170°
Jib Length	1.42 m	1.42 m
Jib Range +/-	+70° / -75°	+70° / -75°
Weight*	6,400 kg	7,050 kg
Gradeability	45%	45%
Turning Radius (Inside)	2.48 m	2.48 m
Turning Radius (Outside)	5.15 m	5.15 m
Axle Oscillation	12.70 cm	12.70 cm
Drive Speed (High speed)	7.7 km/h	7.7 km/h
Capacity*	227 kg	227 kg
Local Floor Load ( With Rated Load)	827 kPa	917 kPa
Overall Floor Load (With Rated Load)	10.9 kPa	11.4 kPa
Maximum # of Persons	2	2
Tyre Type	Grip lug foam-filled	Grip lug foam-filled
Diesel Engine	48 HP	48 HP
Fuel Tank Capacity	64 L	64 L
Hydraulic Reservoir	91 L	91 L



**Skyjack Australia Pty Ltd**  
 4 Coates Place  
 Wetherill Park  
 New South Wales, 2164  
 Tel: +61 (0) 2878 63200  
 Fax: +61 (0) 2878 63222  
 Email: jcranmer@skyjack.com

[www.skyjack.com](http://www.skyjack.com)

This brochure is for illustrative purpose only and based on the latest information at the time of printing. Skyjack Inc. reserves the right to make changes at any time, without notice, to specifications, standard and optional equipment. Consult the Operating Maintenance and Parts Manuals for proper procedures. AS marked platforms are in conformance to Standard AS/NZS 1418.10:2011.