



SHADY ACRES

2215 Bevis Street

HOUSTON, TX 77008

2221 Bevis Street

HOUSTON, TX 77008

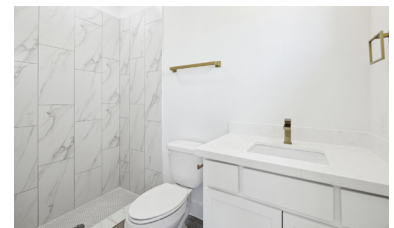
Ready for July Move-In! Where rustic charm meets mid-century modern sophistication in the heart of highly sought-after Shady Acres in the Heights. There's still time to make it your own with customized paint, mirror, and hardware selections! The chef's kitchen impresses with an oversized quartz island, light wood cabinetry, a 5-burner gas range, and a premium stainless steel appliance package.

Thoughtfully designed with exceptional attention to detail, this home features elevated architectural elements throughout—8-inch-wide French oak hardwood plank floors, designer lighting, natural wood beams, interior barn doors, black double-pane vinyl windows, and a 50-year board-and-batten exterior.

The spacious primary suite boasts 13-foot vaulted ceilings and a luxurious ensuite bath with double sinks, huge three-tier walk-in closet, a soaking tub, and a separate glass-enclosed shower.

Enjoy the outdoors with two balconies, a fenced backyard, and an oversized garage. Just a short walk to the Heights H-E-B and neighborhood favorites like Crisp, Cedar Creek, Rainbow Lodge, Cavatore, Tony's, and McIntyre's. You're also steps from Wright-Bemby Park, offering pickleball courts, tennis, a playground, and a covered pavilion.

No HOA and plenty of guest parking. This is location, lifestyle, and luxury—all in one.



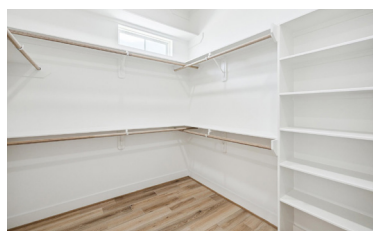
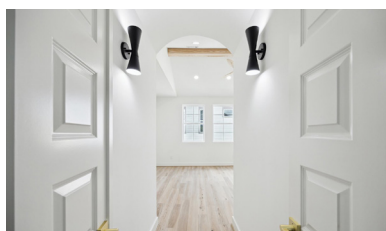
MICHELLE RAINWATER

(325) 668-4350 • RAINWATER@NEWLEAFRE.COM • IG: MRAINWATER.REALTOR • WWW.NEWLEAFRE.COM

For informational use only. All information contained herein should be independently verified.



2215 Bevis Square Feet: 2,101
2221 Bevis Square Feet: 2,066
Stories: 3
Lot Size: 1,969
Year Built: 2025
Living Room: 18 x 16, 2nd
Dining Room: 14 x 14, 2nd
Kitchen: 13 x 16, 2nd
2215 Bevis Primary Bed: 18 x 15, 3rd
2221 Bevis Primary Bed: 18 x 14, 3rd
Bedroom: 13 x 14, 1st
Bedroom: 13 x 11, 3rd
Floors: Carpet, Tile, Wood
Countertop: Quartz
Garage: 2 Car, Attached
Subdivision: Shady Acres
HOA: No



MICHELLE RAINWATER

(325) 668-4350 • RAINWATER@NEWLEAFRE.COM • IG: MRAINWATER.REALTOR • WWW.NEWLEAFRE.COM

For informational use only. All information contained herein should be independently verified.