

Marks of a great marble.



Cat Eyes: 1, 3, 4, 5 or 6 vanes that look like fan blades.



Patches: Solid base with a dab of color on one side.



Baseballs: Two ribbons running side-by-side.



Cut-line Marbles: The ribbons stop at the seams.



Corkscrews: The ribbon spirals from end to end.



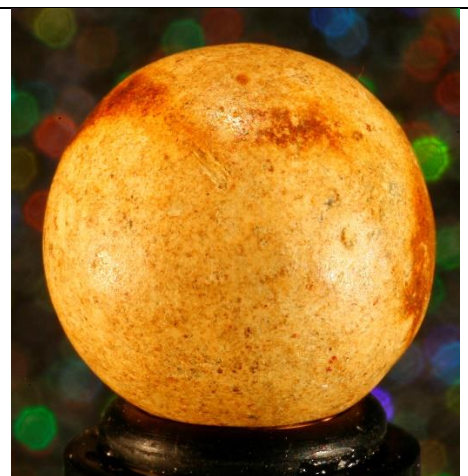
Cleary's: The base glass is transparent / see-thru.



Brushed Marbles: Under the colored glass on the surface, the base glass is clear.



Swirls: Lots of ribbons swirling on and sometimes in the marble.



Hand-made Clay Marbles: The surface is rough, compared to smooth glass marbles.